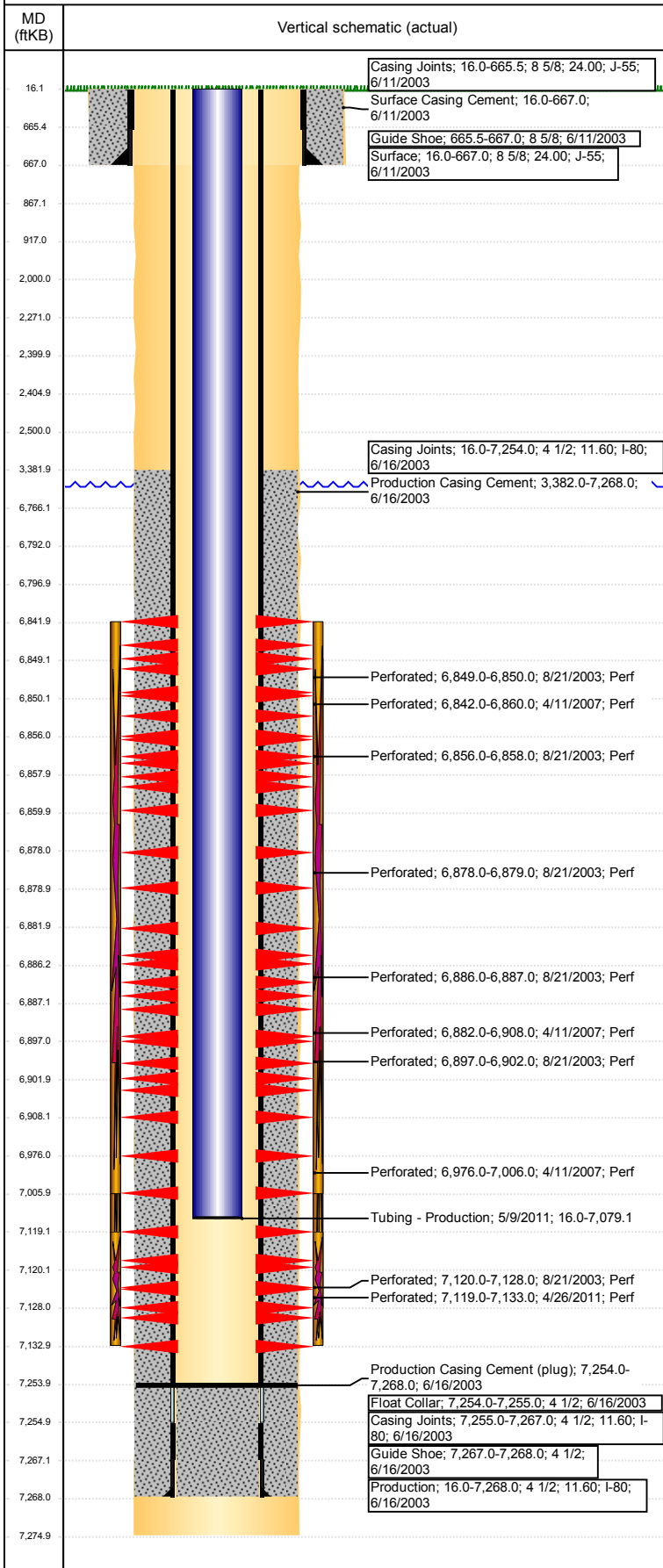


Well Name: FRICO 7-14

DEVIATED - ORIGINAL HOLE, 1/18/2018 3:10:59 PM

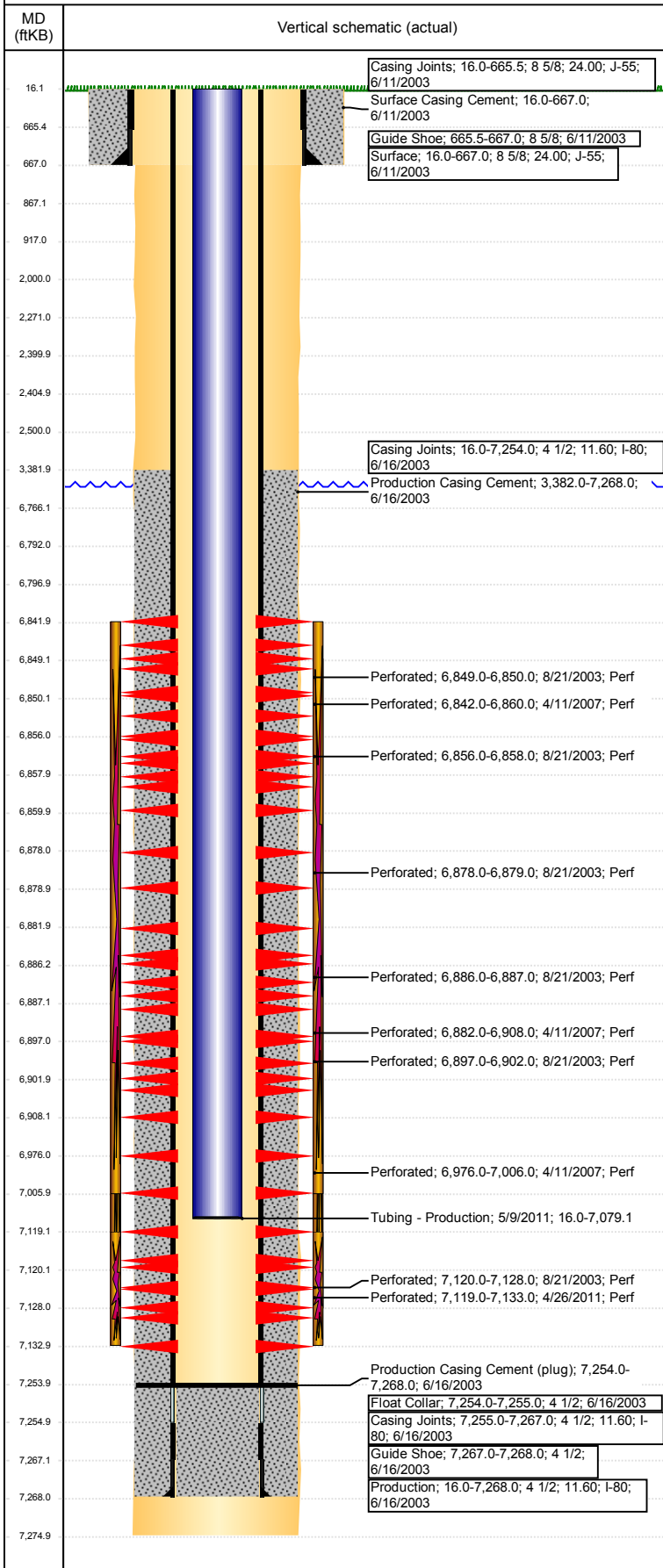


Well Header						
API 05-123-21518	Business Unit DJ BASIN		District 15		Well Config DEVIATED	
Original KB Elevation (ft) 4,827	KB - GL / MSL (ftKB) 16.00		Spud Date 6/10/2003		P & A Date	
Comment						
Directions To Well WCR 34 1/2 & WCR 47, S 6/10, W 12/10, S & W 2/10 INTO						
Congressional Location						
Quarter 3 SW	Quarter 4 NE	Section 14	Township 3	Twntshp N/S Dir N	Range 65	Range E/W Dir W
Bottom Hole Location						
North-South Distance (ft) 1,978.0		From N or S Line FNL		East-West Distance (ft) 1,864.0		From E or W Line FEL
Plug Back Total Depths						
Date	Depth (ftKB)	Method		Com		
6/4/2003	7,250.0	TAG		CLEAN OUT		
6/16/2003	7,254.0	CASING TALLY		TOP OF FLOAT COLLAR		
8/21/2003	7,221.0	CASED HOLE LOG		DEPTH LOGGER ON CBL		
4/25/2011	7,254.0	TAG		CLEAN OUT		
Wellbore Sections						
Section Des		Size (in)		Act Top, MD (ftKB)		Act Btm, MD (ftKB)
SURFACE		12 1/4		16		667
PRODUCTION		7 7/8		667		7,275
Zone Statuses						
Zone Name	Status Date	Status	Fluid Type	Job	Prod Method	
NIOBRARA	9/11/2003	PR		DRILLING/CO...		
NIOBRARA	4/16/2007	PR		RE-FRAC, 4/8/...		
NIOBRARA	5/13/2011	PR		RE-FRAC, 4/21 ...		
CODELL	9/11/2003	PR		DRILLING/CO...		
CODELL	4/10/2007	SI		RE-FRAC, 4/8/...		
CODELL	5/13/2011	PR		RE-FRAC, 4/21 ...		
Casing Strings						
Surface, 667.0ftKB						
Casing Description Surface	Run Date 6/11/2003	OD (in) 8 5/8	Wt/Len (l... 24.00	Grade J-55	Top, MD (ft... 16.0	MD (ftKB) 667.0
Production, 7,268.0ftKB						
Casing Description Production	Run Date 6/16/2003	OD (in) 4 1/2	Wt/Len (l... 11.60	Grade I-80	Top, MD (ft... 16.0	MD (ftKB) 7,268.0
Cement						
Description Surface Casing Cement				Top Depth (ftKB) 16.0		Bottom Depth (ftKB) 667.0
Description Production Casing Cement				Top Depth (ftKB) 3,382.0		Bottom Depth (ftKB) 7,268.0
Description P&A PLUG				Top Depth (ftKB) 6,766.0		Bottom Depth (ftKB) 6,792.0
Description CICR - TOP				Top Depth (ftKB) 2,271.0		Bottom Depth (ftKB) 2,400.0
Description CICR - BOTTOM				Top Depth (ftKB) 2,405.0		Bottom Depth (ftKB) 2,500.0
Description P&A PLUG				Top Depth (ftKB) 2,000.0		Bottom Depth (ftKB) 2,500.0
Description P&A PLUG				Top Depth (ftKB) 867.0		Bottom Depth (ftKB) 917.0
Description P&A PLUG				Top Depth (ftKB) 16.1		Bottom Depth (ftKB) 867.0
Tubing Strings						
Tubing Description BRIDGE PLUG		Run Date 4/10/2007	String... 4	ID (in)	Wt (lb/ft)	Grade
						Len (ft) 1.00
						Set De...
Tubing Components						
Item Des	OD (in)	Wt (lb/ft)	Grade	Jts	Len (ft)	Btm (ftKB)
Wellbore Equipment, CIBP With CMT Cap, in, ppf,	4			1	1.00	7,101.0
						Btm (TVD) (ftKB)
Tubing Description PRODUCTION TUBING		Run Date 4/30/2007	String... 2 3/8	ID (in) 2.00	Wt (lb/ft) 4.70	Grade J55
						Len (ft) 6,796.
						Set De... 13

Wellbore Schematic Input Report

Well Name: FRICO 7-14

DEVIATED - ORIGINAL HOLE, 1/18/2018 3:11:00 PM



Tubing Components							
Item Des	OD (in)	Wt (lb/ft)	Grade	Jts	Len (ft)	Btm (ftKB)	Btm (TVD) (ftKB)
2 3/8, 4.7, J-55, 8RD EUE	2 3/8	4.70	J55	223	6,794.53	6,810.5	
Wellbore Equipment, Seating Nipple, , ppf, ,	2 3/8			1	1.10	6,811.6	
Wellbore Equipment, Notched Collar, , ppf, ,	2 3/8			1	0.50	6,812.1	
Tubing Description	Run Date	String...	ID (in)	Wt (lb/ft)	Grade	Len (ft)	Set De...
Tubing - Production	5/9/2011	2 3/8	2.00	4.70	J-55	7,063.10	

Tubing Components							
Item Des	OD (in)	Wt (lb/ft)	Grade	Jts	Len (ft)	Btm (ftKB)	Btm (TVD) (ftKB)
EUE 8rd Tubing	2 3/8	4.70	J-55	231	7,061.60	7,077.6	
Seal Nipple	2 3/8			1	1.00	7,078.6	
Notched collar	2 3/8			1	0.50	7,079.1	

Other In Hole				
Run Date	Des	OD (in)	Top (ftKB)	Btm (ftKB)
1/15/2018	Cement Retainer	3.99	2,400.0	2,405.0
1/15/2018	Cast Iron Bridge Plug	3.99	6,792.0	6,797.0

Logs			
Date	Type	Top, MD (ftKB)	Btm, MD (ftKB)
6/16/2003	CEMENT EVALUATION	664.0	7,267.0
6/16/2003	COMPENSATED NEUTRON	4,000.0	7,257.0
6/16/2003	GAMMA RAY	4,000.0	7,257.0
6/16/2003	INDUCTION	664.0	7,267.0
8/21/2003	CEMENT BOND	3,081.0	7,218.0
9/26/2014	GYRO	16.0	7,000.0

Perforation Data					
Linked Zone	Bnch/St g	Sum of Entered Shot Total	Top (ftKB)	Btm (ftKB)	Date
CODELL, ORIGINAL HOLE		0	2,500.00	2,500.00	1/15/2018
		0	2,500.00	2,500.00	1/15/2018
NIOBRARA, ORIGINAL HOLE	A	18	6,842.00	6,860.00	4/11/2007
NIOBRARA, ORIGINAL HOLE	A	1	6,849.00	6,850.00	8/21/2003
NIOBRARA, ORIGINAL HOLE	A	4	6,856.00	6,858.00	8/21/2003
NIOBRARA, ORIGINAL HOLE	B	1	6,878.00	6,879.00	8/21/2003
NIOBRARA, ORIGINAL HOLE	B	26	6,882.00	6,908.00	4/11/2007
NIOBRARA, ORIGINAL HOLE	B	1	6,886.00	6,887.00	8/21/2003
NIOBRARA, ORIGINAL HOLE	B	10	6,897.00	6,902.00	8/21/2003
NIOBRARA, ORIGINAL HOLE	C	30	6,976.00	7,006.00	4/11/2007
CODELL, ORIGINAL HOLE		42	7,119.00	7,133.00	4/26/2011
CODELL, ORIGINAL HOLE		16	7,120.00	7,128.00	8/21/2003
Total (Sum)		149			

Stimulation Intervals		
Start Date	Primary Job Type	
8/29/2003	DRILLING/COMPLETION - ORIGINAL	
Technical Result	Tech Result Details	Tech Result Note
Comment		
LIMITED ENTRY FRAC		
Start Date	Primary Job Type	
4/12/2007	RE-FRAC	
Technical Result	Tech Result Details	Tech Result Note
Comment		
Start Date	Primary Job Type	
5/4/2011	RE-FRAC	
Technical Result	Tech Result Details	Tech Result Note
Comment		