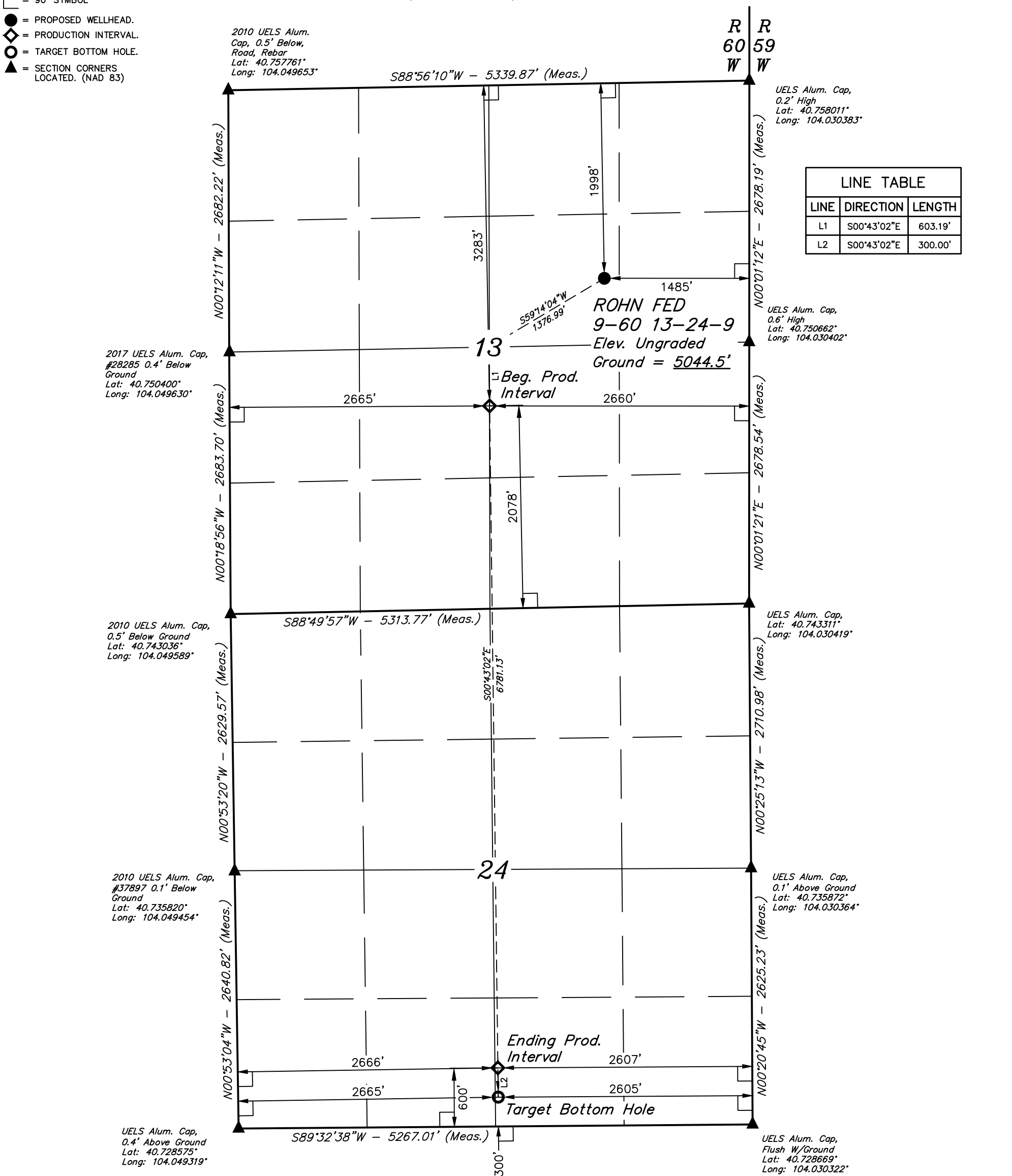


LEGEND:

- = 90° SYMBOL
- = PROPOSED WELLHEAD.
- = PRODUCTION INTERVAL.
- = TARGET BOTTOM HOLE.
- = SECTION CORNERS LOCATED. (NAD 83)

T9N, R60W, 6th P.M.



PDOP = 1.2

1000' 500' 0' 1000'

THIS IS TO CERTIFY THAT THE ABOVE AND WAS PREPARED FROM FIELD NOTES OF ACTUAL SURVEYS MADE BY ME OR UNDER MY SUPERVISION, AND THAT THE SAME ARE TRUE AND CORRECT TO THE BEST OF MY KNOWLEDGE AND BELIEF.

COLORADO REGISTERED LAND SURVEYOR  
JAMES FRESHWATER  
REGISTRATION NO. 28285  
STATE OF COLORADO

REV: 1 01-10-18 C.C.  
(NAME CHANGE & BPI CHANGE)

| SURFACE LOCATION<br>1998' FNL 1485' FEL  | BEG. PROD. INTERVAL<br>3283' FNL 2078' FSL 2665' FWL 2660' FEL  | ENDING PROD. INTERVAL<br>600' FSL 2666' FWL 2607' FEL   | TARGET BOTTOM HOLE<br>300' FSL 2665' FWL 2605' FEL   |
|--|---|---|--|
| NAD 83 (SURFACE LOCATION)<br>LATITUDE = 40°45'08.85" (40.752459)<br>LONGITUDE = 104°02'08.72" (104.035757) | NAD 83 (BEG. PROD. INTERVAL)<br>LATITUDE = 40°44'55.95" (40.748876)<br>LONGITUDE = 104°02'24.02" (104.040005) | NAD 83 (ENDING PROD. INTERVAL)<br>LATITUDE = 40°43'48.97" (40.730269)<br>LONGITUDE = 104°02'23.04" (104.039734) | NAD 83 (TARGET BOTTOM HOLE)<br>LATITUDE = 40°43'46.01" (40.729446)<br>LONGITUDE = 104°02'23.00" (104.039722) |
| NAD 27 (SURFACE LOCATION)<br>LATITUDE = 40°45'08.90" (40.752472)<br>LONGITUDE = 104°02'06.91" (104.035253) | NAD 27 (BEG. PROD. INTERVAL)<br>LATITUDE = 40°44'56.00" (40.748889)<br>LONGITUDE = 104°02'22.21" (104.039502) | NAD 27 (ENDING PROD. INTERVAL)<br>LATITUDE = 40°43'49.02" (40.730282)<br>LONGITUDE = 104°02'21.23" (104.039230) | NAD 27 (TARGET BOTTOM HOLE)<br>LATITUDE = 40°43'46.05" (40.729459)<br>LONGITUDE = 104°02'21.18" (104.039218) |
| STATE PLANE NAD 83 (CO. NORTH)<br>N: 1520315.39 E: 3405668.21  | STATE PLANE NAD 83 (CO. NORTH)<br>N: 1518990.62 E: 3404512.71   | STATE PLANE NAD 83 (CO. NORTH)<br>N: 1512213.73 E: 3404699.63   | STATE PLANE NAD 83 (CO. NORTH)<br>N: 1511913.92 E: 3404707.89  |
| STATE PLANE NAD 27 (CO. NORTH)<br>N: 520313.37 E: 2405818.51   | STATE PLANE NAD 27 (CO. NORTH)<br>N: 518988.63 E: 2404662.98  | STATE PLANE NAD 27 (CO. NORTH)<br>N: 512211.86 E: 2404850.00  | STATE PLANE NAD 27 (CO. NORTH)<br>N: 511912.05 E: 2404858.27   |

**BASIS OF BEARINGS**  
BASIS OF BEARINGS IS A G.P.S. OBSERVATION

**BASIS OF ELEVATION**  
SPOT ELEVATION LOCATED AT THE NORTHEAST CORNER OF SECTION 2, T9N, R61W, 6th P.M., TAKEN FROM THE GROVER SOUTH, QUADRANGLE, COLORADO, WELD COUNTY, 7.5 MINUTE QUAD (TOPOGRAPHICAL MAP) PUBLISHED BY THE UNITED STATES DEPARTMENT OF THE INTERIOR, GEOLOGICAL SURVEY. SAID ELEVATION IS MARKED AS BEING 5043 FEET.

**UELTS, LLC**  
Corporate Office \* 85 South 200 East  
Vernal, UT 84078 \* (435) 789-1017

**BISON OIL & GAS II**

**ROHN FED 9-60 13-24-9**  
**SW 1/4 NE 1/4, SECTION 13, T9N, R60W, 6th P.M.**  
**WELD COUNTY, COLORADO**

|             |                  |          |            |
|-------------|------------------|----------|------------|
| SURVEYED BY | JAMES FRESHWATER | 01-02-18 | SCALE      |
| DRAWN BY    | D.J.W.           | 01-04-18 | 1" = 1000' |

**WELL LOCATION PLAT**