

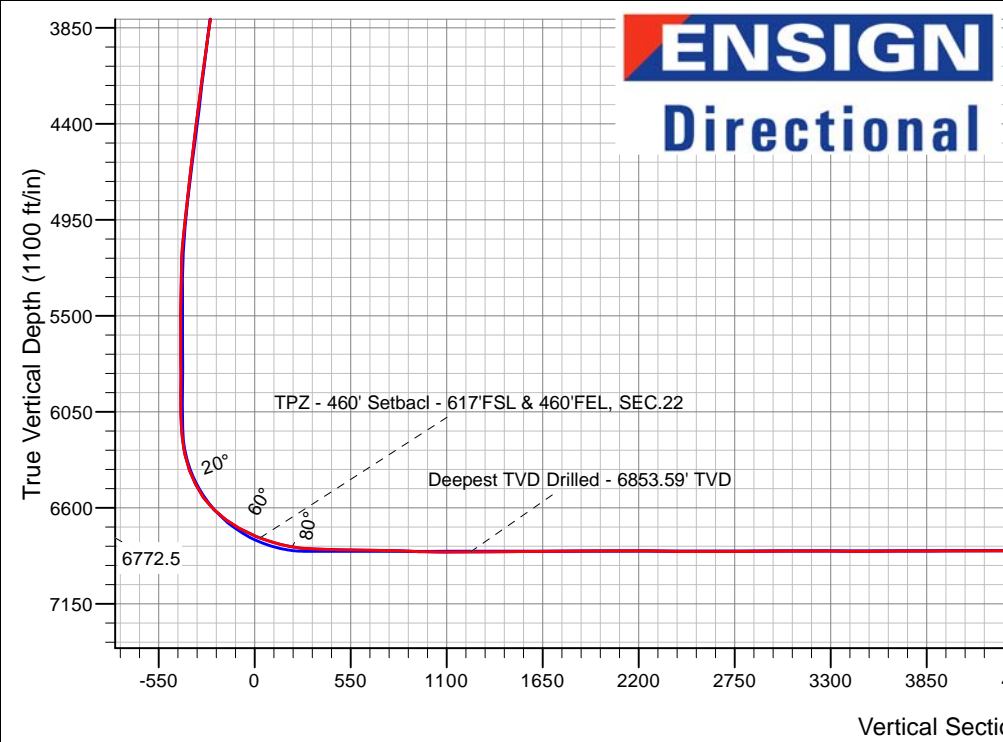
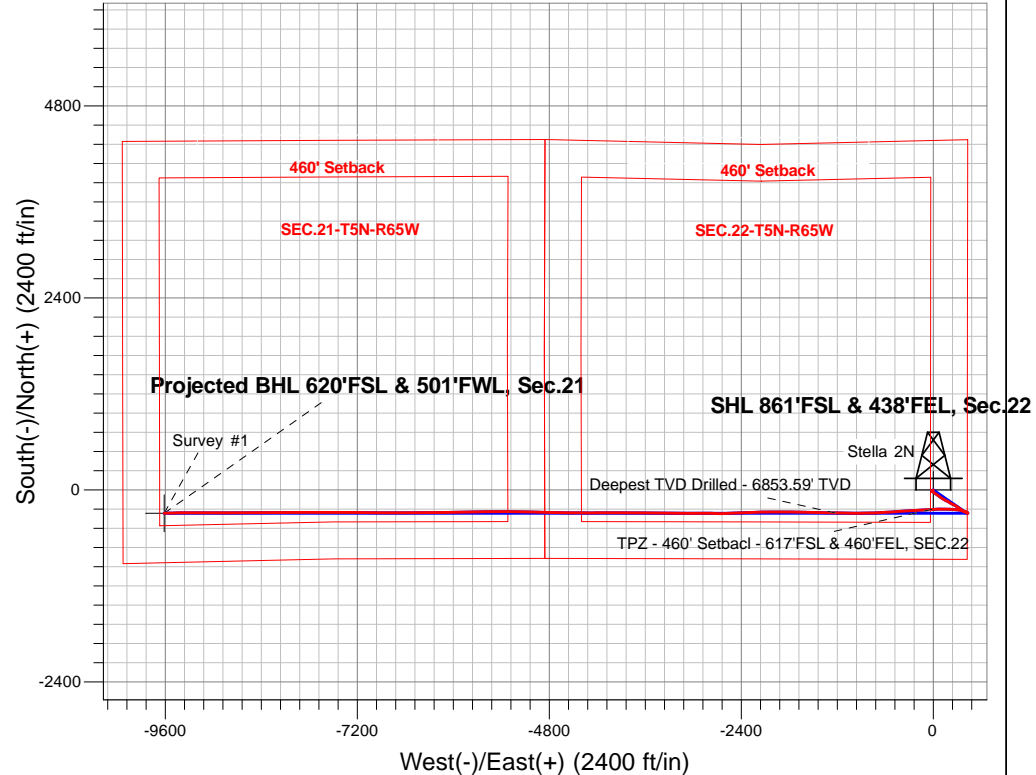
# PDC Energy Inc. DJ Basin

Well Name: **Stella 2N**

Surface Location: Stella 5N65W22Y Pad Sec.22-T5N-R65W  
 North American Datum 1983 , US State Plane 1983, Colorado Northern Zone  
 Ground Elevation: 4647.0  
 +N/-S+E/-W Northing Easting Latitude Longitude Slot  
 0.0 0.0 1382384.913239173.97 40.379870 -104.641480  
 RKB - 23' WELL @ 4670.0ft (RKB - 23')

## FINAL SURVEY

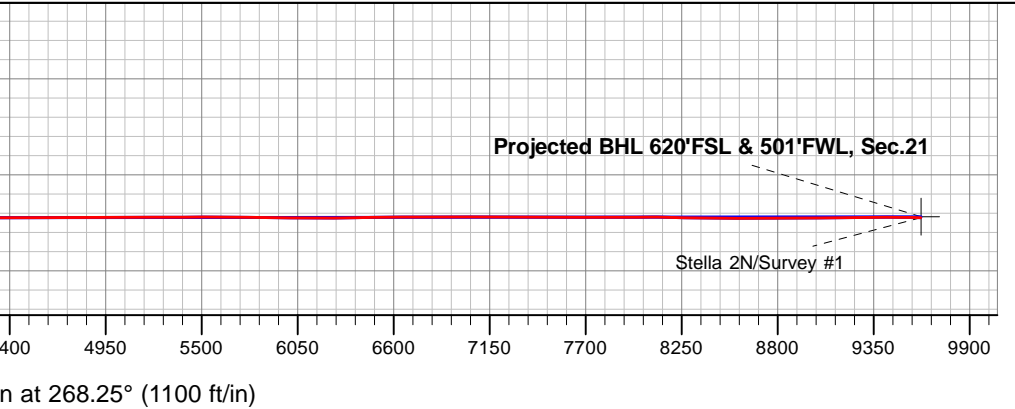
**Projected Bottom Hole Location**  
**16,616'MD 6845'TVD 293'S & 9615'W of SHL**  
**89.6 degree Incl @ 267.9 degree AZM**



Stella 5N65W22Y Pad Sec.22-T5N-R65W  
 Stella 2N  
 Wellbore #1  
 9:34, October 06 2017

ANNOTATIONS		
TVD	MD	Annotation
6772.5	7011.6	TPZ - 460' Setback - 617'FSL & 460'FEL, SEC.22
6853.6	8227.0	Deepest TVD Drilled - 6853.59' TVD

LEGEND	
	Stella 2N, Wellbore #1, Plan #3 (9-22-17) V0
	Wellbore #1
	Survey #1





## **PDC Energy Inc. DJ Basin**

**SEC.22-T5N-R65W**

**Stella 5N65W22Y Pad Sec.22-T5N-R65W**

**Stella 2N**

**Wellbore #1**

**Survey: Survey #1**

## **Standard Survey Report**

**06 October, 2017**



<b>Company:</b>	PDC Energy Inc. DJ Basin	<b>Local Co-ordinate Reference:</b>	Well Stella 2N
<b>Project:</b>	SEC.22-T5N-R65W	<b>TVD Reference:</b>	WELL @ 4670.0ft (RKB - 23')
<b>Site:</b>	Stella 5N65W22Y Pad Sec.22-T5N-R65W	<b>MD Reference:</b>	WELL @ 4670.0ft (RKB - 23')
<b>Well:</b>	Stella 2N	<b>North Reference:</b>	True
<b>Wellbore:</b>	Wellbore #1	<b>Survey Calculation Method:</b>	Minimum Curvature
<b>Design:</b>	Wellbore #1	<b>Database:</b>	US_EDM

<b>Project</b>	SEC.22-T5N-R65W, Weld County, Colorado		
<b>Map System:</b>	US State Plane 1983	<b>System Datum:</b>	Mean Sea Level
<b>Geo Datum:</b>	North American Datum 1983		Using Well Reference Point
<b>Map Zone:</b>	Colorado Northern Zone		Using geodetic scale factor

<b>Site</b>	Stella 5N65W22Y Pad Sec.22-T5N-R65W				
<b>Site Position:</b>		<b>Northing:</b>	1,382,395.77 usft	<b>Latitude:</b>	40.379900
<b>From:</b>	Lat/Long	<b>Easting:</b>	3,239,165.51 usft	<b>Longitude:</b>	-104.641510
<b>Position Uncertainty:</b>	0.0 ft	<b>Slot Radius:</b>	13-3/16 "	<b>Grid Convergence:</b>	0.55 °

<b>Well</b>	Stella 2N					
<b>Well Position</b>	<b>+N/-S</b>	0.0 ft	<b>Northing:</b>	1,382,384.91 usft	<b>Latitude:</b>	40.379870
	<b>+E/-W</b>	0.0 ft	<b>Easting:</b>	3,239,173.98 usft	<b>Longitude:</b>	-104.641480
<b>Position Uncertainty</b>		0.0 ft	<b>Wellhead Elevation:</b>	0.0 ft	<b>Ground Level:</b>	4,647.0 ft

<b>Wellbore</b>	Wellbore #1				
<b>Magnetics</b>	<b>Model Name</b>	<b>Sample Date</b>	<b>Declination (°)</b>	<b>Dip Angle (°)</b>	<b>Field Strength (nT)</b>
	IGRF2010	9/22/2017	7.95	66.83	52,474

<b>Design</b>	Wellbore #1				
<b>Audit Notes:</b>					
<b>Version:</b>	1.0	<b>Phase:</b>	ACTUAL	<b>Tie On Depth:</b>	0.0
<b>Vertical Section:</b>	<b>Depth From (TVD) (ft)</b>	<b>+N/-S (ft)</b>	<b>+E/-W (ft)</b>	<b>Direction (°)</b>	
	0.0	0.0	0.0	268.25	

<b>Survey Program</b>	<b>Date</b>	10/6/2017			
<b>From (ft)</b>	<b>To (ft)</b>	<b>Survey (Wellbore)</b>	<b>Tool Name</b>	<b>Description</b>	
147.0	16,616.0	Survey #1 (Wellbore #1)	MWD	MWD - Standard	

<b>Survey</b>										
<b>Measured Depth (ft)</b>	<b>Inclination (°)</b>	<b>Azimuth (°)</b>	<b>Vertical Depth (ft)</b>	<b>+N/-S (ft)</b>	<b>+E/-W (ft)</b>	<b>Vertical Section (ft)</b>	<b>Dogleg Rate (°/100usft)</b>	<b>Build Rate (°/100usft)</b>	<b>Turn Rate (°/100usft)</b>	
0.0	0.00	0.00	0.0	0.0	0.0	0.0	0.00	0.00	0.00	
1.0	0.01	230.70	1.0	0.0	0.0	0.0	0.61	0.61	0.00	
<b>SHL 861'FSL &amp; 438'FEL, Sec.22</b>										
147.0	0.90	230.70	147.0	-0.7	-0.9	0.9	0.61	0.61	0.00	
237.0	1.00	232.20	237.0	-1.7	-2.1	2.1	0.11	0.11	1.67	
327.0	1.10	237.90	327.0	-2.6	-3.4	3.5	0.16	0.11	6.33	
416.0	1.20	239.70	415.9	-3.5	-4.9	5.0	0.12	0.11	2.02	
506.0	1.30	240.50	505.9	-4.5	-6.6	6.8	0.11	0.11	0.89	
595.0	1.30	247.00	594.9	-5.4	-8.5	8.6	0.17	0.00	7.30	
685.0	0.70	219.90	684.9	-6.2	-9.7	9.9	0.83	-0.67	-30.11	
775.0	0.70	207.10	774.9	-7.1	-10.3	10.6	0.17	0.00	-14.22	

<b>Company:</b>	PDC Energy Inc. DJ Basin	<b>Local Co-ordinate Reference:</b>	Well Stella 2N
<b>Project:</b>	SEC.22-T5N-R65W	<b>TVD Reference:</b>	WELL @ 4670.0ft (RKB - 23')
<b>Site:</b>	Stella 5N65W22Y Pad Sec.22-T5N-R65W	<b>MD Reference:</b>	WELL @ 4670.0ft (RKB - 23')
<b>Well:</b>	Stella 2N	<b>North Reference:</b>	True
<b>Wellbore:</b>	Wellbore #1	<b>Survey Calculation Method:</b>	Minimum Curvature
<b>Design:</b>	Wellbore #1	<b>Database:</b>	US_EDM

Survey										
Measured Depth (ft)	Inclination (°)	Azimuth (°)	Vertical Depth (ft)	+N/-S (ft)	+E/-W (ft)	Vertical Section (ft)	Dogleg Rate (°/100usft)	Build Rate (°/100usft)	Turn Rate (°/100usft)	
864.0	0.70	210.60	863.9	-8.1	-10.9	11.1	0.05	0.00	3.93	
954.0	1.00	207.40	953.9	-9.2	-11.5	11.8	0.34	0.33	-3.56	
1,043.0	1.10	209.60	1,042.9	-10.7	-12.3	12.6	0.12	0.11	2.47	
1,133.0	1.20	212.40	1,132.8	-12.2	-13.2	13.6	0.13	0.11	3.11	
1,223.0	1.10	209.90	1,222.8	-13.8	-14.2	14.6	0.12	-0.11	-2.78	
1,312.0	1.00	213.80	1,311.8	-15.2	-15.0	15.5	0.14	-0.11	4.38	
1,402.0	1.10	212.00	1,401.8	-16.5	-15.9	16.4	0.12	0.11	-2.00	
1,492.0	1.10	145.10	1,491.8	-18.0	-15.9	16.4	1.35	0.00	-74.33	
1,582.0	2.50	116.20	1,581.7	-19.6	-13.6	14.2	1.81	1.56	-32.11	
1,615.0	2.70	116.10	1,614.7	-20.2	-12.3	12.9	0.61	0.61	-0.30	
1,670.0	2.60	109.60	1,669.6	-21.2	-9.9	10.6	0.58	-0.18	-11.82	
1,760.0	4.30	115.50	1,759.5	-23.3	-5.0	5.7	1.93	1.89	6.56	
1,849.0	6.50	126.30	1,848.1	-27.8	2.1	-1.3	2.71	2.47	12.13	
1,939.0	7.60	125.00	1,937.4	-34.2	11.1	-10.0	1.23	1.22	-1.44	
2,028.0	9.20	137.90	2,025.4	-42.9	20.7	-19.4	2.77	1.80	14.49	
2,118.0	10.60	127.50	2,114.1	-53.2	32.1	-30.4	2.52	1.56	-11.56	
2,209.0	10.30	125.20	2,203.6	-63.0	45.4	-43.4	0.56	-0.33	-2.53	
2,299.0	10.10	122.20	2,292.2	-71.9	58.6	-56.4	0.63	-0.22	-3.33	
2,389.0	9.60	119.00	2,380.8	-79.7	71.9	-69.4	0.82	-0.56	-3.56	
2,478.0	10.60	126.10	2,468.5	-88.1	85.0	-82.2	1.79	1.12	7.98	
2,568.0	9.90	125.40	2,557.0	-97.5	98.0	-94.9	0.79	-0.78	-0.78	
2,658.0	9.90	125.00	2,645.7	-106.4	110.6	-107.3	0.08	0.00	-0.44	
2,747.0	9.60	125.50	2,733.4	-115.1	122.9	-119.3	0.35	-0.34	0.56	
2,838.0	9.30	115.50	2,823.2	-122.7	135.7	-131.9	1.83	-0.33	-10.99	
2,927.0	8.80	115.40	2,911.1	-128.7	148.4	-144.4	0.56	-0.56	-0.11	
3,018.0	7.70	117.50	3,001.1	-134.5	160.1	-155.9	1.25	-1.21	2.31	
3,107.0	7.50	114.30	3,089.3	-139.6	170.6	-166.3	0.53	-0.22	-3.60	
3,197.0	8.40	118.50	3,178.5	-145.2	181.8	-177.3	1.19	1.00	4.67	
3,287.0	7.40	119.20	3,267.6	-151.2	192.6	-187.9	1.12	-1.11	0.78	
3,376.0	8.60	122.00	3,355.8	-157.5	203.3	-198.4	1.42	1.35	3.15	
3,466.0	8.20	120.40	3,444.8	-164.3	214.5	-209.4	0.51	-0.44	-1.78	
3,556.0	7.00	121.00	3,534.0	-170.4	224.7	-219.4	1.34	-1.33	0.67	
3,646.0	7.90	120.40	3,623.2	-176.3	234.8	-229.3	1.00	1.00	-0.67	
3,736.0	9.60	117.60	3,712.2	-182.9	246.8	-241.1	1.95	1.89	-3.11	
3,826.0	9.80	118.70	3,800.9	-190.1	260.1	-254.2	0.30	0.22	1.22	
3,915.0	9.60	119.20	3,888.6	-197.3	273.2	-267.1	0.24	-0.22	0.56	
4,005.0	9.30	120.80	3,977.4	-204.7	286.0	-279.7	0.44	-0.33	1.78	
4,094.0	8.60	119.40	4,065.3	-211.7	298.0	-291.4	0.82	-0.79	-1.57	
4,184.0	9.80	123.80	4,154.2	-219.2	310.2	-303.4	1.54	1.33	4.89	
4,274.0	9.20	123.30	4,242.9	-227.4	322.6	-315.5	0.67	-0.67	-0.56	
4,364.0	8.10	124.50	4,331.9	-235.0	333.9	-326.6	1.24	-1.22	1.33	
4,454.0	9.00	127.50	4,420.9	-242.9	344.7	-337.1	1.12	1.00	3.33	
4,544.0	8.50	126.80	4,509.9	-251.1	355.6	-347.8	0.57	-0.56	-0.78	

<b>Company:</b>	PDC Energy Inc. DJ Basin	<b>Local Co-ordinate Reference:</b>	Well Stella 2N
<b>Project:</b>	SEC.22-T5N-R65W	<b>TVD Reference:</b>	WELL @ 4670.0ft (RKB - 23')
<b>Site:</b>	Stella 5N65W22Y Pad Sec.22-T5N-R65W	<b>MD Reference:</b>	WELL @ 4670.0ft (RKB - 23')
<b>Well:</b>	Stella 2N	<b>North Reference:</b>	True
<b>Wellbore:</b>	Wellbore #1	<b>Survey Calculation Method:</b>	Minimum Curvature
<b>Design:</b>	Wellbore #1	<b>Database:</b>	US_EDM

Survey									
Measured Depth (ft)	Inclination (°)	Azimuth (°)	Vertical Depth (ft)	+N/-S (ft)	+E/-W (ft)	Vertical Section (ft)	Dogleg Rate (°/100usft)	Build Rate (°/100usft)	Turn Rate (°/100usft)
4,634.0	7.70	129.10	4,599.0	-258.9	365.6	-357.5	0.96	-0.89	2.56
4,724.0	8.60	121.70	4,688.1	-266.3	376.0	-367.7	1.53	1.00	-8.22
4,814.0	8.40	116.20	4,777.1	-272.7	387.6	-379.1	0.93	-0.22	-6.11
4,904.0	7.60	112.40	4,866.2	-277.9	399.0	-390.4	1.07	-0.89	-4.22
4,994.0	6.90	114.30	4,955.5	-282.4	409.4	-400.7	0.82	-0.78	2.11
5,084.0	6.20	120.10	5,044.9	-287.0	418.6	-409.6	1.07	-0.78	6.44
5,174.0	3.60	120.30	5,134.5	-290.9	425.2	-416.2	2.89	-2.89	0.22
5,264.0	1.30	107.80	5,224.5	-292.6	428.6	-419.5	2.61	-2.56	-13.89
5,354.0	1.40	100.60	5,314.4	-293.1	430.7	-421.6	0.22	0.11	-8.00
5,444.0	0.30	30.10	5,404.4	-293.1	431.9	-422.8	1.48	-1.22	-78.33
5,534.0	0.30	21.00	5,494.4	-292.7	432.1	-423.0	0.05	0.00	-10.11
5,624.0	0.80	6.00	5,584.4	-291.9	432.2	-423.2	0.57	0.56	-16.67
5,713.0	0.60	354.20	5,673.4	-290.8	432.3	-423.2	0.28	-0.22	-13.26
5,803.0	0.70	337.90	5,763.4	-289.8	432.0	-423.0	0.23	0.11	-18.11
5,893.0	0.80	9.90	5,853.4	-288.7	431.9	-422.9	0.47	0.11	35.56
5,983.0	0.70	333.30	5,943.4	-287.6	431.8	-422.8	0.53	-0.11	-40.67
6,072.0	0.80	331.40	6,032.4	-286.5	431.2	-422.3	0.12	0.11	-2.13
6,162.0	1.20	317.50	6,122.4	-285.3	430.3	-421.4	0.52	0.44	-15.44
6,251.0	8.40	295.40	6,211.0	-281.8	423.8	-415.0	8.20	8.09	-24.83
6,341.0	15.10	294.10	6,299.1	-274.2	407.1	-398.6	7.45	7.44	-1.44
6,431.0	20.00	287.10	6,384.9	-264.9	381.7	-373.4	5.92	5.44	-7.78
6,520.0	27.60	281.10	6,466.2	-256.4	346.9	-338.9	8.95	8.54	-6.74
6,610.0	36.70	277.80	6,542.4	-248.7	299.7	-291.9	10.29	10.11	-3.67
6,699.0	45.10	275.00	6,609.6	-242.4	241.8	-234.3	9.66	9.44	-3.15
6,790.0	53.70	271.30	6,668.8	-238.7	172.9	-165.5	9.94	9.45	-4.07
6,879.0	60.60	267.90	6,717.0	-239.3	98.2	-90.8	8.39	7.75	-3.82
6,969.0	67.10	267.80	6,756.7	-242.4	17.5	-10.1	7.22	7.22	-0.11
7,011.6	69.28	267.17	6,772.5	-244.1	-22.0	29.4	5.29	5.11	-1.47
<b>TPZ - 460' Setback - 617'FSL &amp; 460'FEL, SEC.22</b>									
7,059.0	71.70	266.50	6,788.3	-246.6	-66.6	74.1	5.29	5.11	-1.42
7,149.0	76.70	266.50	6,812.8	-251.8	-153.0	160.6	5.56	5.56	0.00
7,239.0	82.20	266.90	6,829.3	-256.9	-241.3	249.0	6.13	6.11	0.44
7,296.0	86.06	266.52	6,835.1	-260.2	-297.9	305.7	6.81	6.78	-0.67
<b>LPL 571'FSL &amp; 732'FEL, Sec.22</b>									
7,329.0	88.30	266.30	6,836.7	-262.3	-330.8	338.7	6.81	6.78	-0.66
7,419.0	88.90	265.80	6,838.9	-268.5	-420.6	428.6	0.87	0.67	-0.56
7,509.0	89.60	266.30	6,840.1	-274.7	-510.4	518.5	0.96	0.78	0.56
7,599.0	88.60	267.10	6,841.5	-279.8	-600.2	608.4	1.42	-1.11	0.89
7,688.0	88.40	267.10	6,843.9	-284.3	-689.1	697.4	0.22	-0.22	0.00
7,778.0	88.30	267.40	6,846.5	-288.6	-778.9	787.3	0.35	-0.11	0.33
7,868.0	88.00	268.50	6,849.4	-291.9	-868.8	877.3	1.27	-0.33	1.22
7,958.0	89.50	270.70	6,851.3	-292.5	-958.8	967.2	2.96	1.67	2.44
8,048.0	88.70	270.40	6,852.7	-291.6	-1,048.8	1,057.2	0.95	-0.89	-0.33
8,137.0	90.20	271.80	6,853.6	-289.9	-1,137.7	1,146.0	2.31	1.69	1.57

<b>Company:</b>	PDC Energy Inc. DJ Basin	<b>Local Co-ordinate Reference:</b>	Well Stella 2N
<b>Project:</b>	SEC.22-T5N-R65W	<b>TVD Reference:</b>	WELL @ 4670.0ft (RKB - 23')
<b>Site:</b>	Stella 5N65W22Y Pad Sec.22-T5N-R65W	<b>MD Reference:</b>	WELL @ 4670.0ft (RKB - 23')
<b>Well:</b>	Stella 2N	<b>North Reference:</b>	True
<b>Wellbore:</b>	Wellbore #1	<b>Survey Calculation Method:</b>	Minimum Curvature
<b>Design:</b>	Wellbore #1	<b>Database:</b>	US_EDM

Survey									
Measured Depth (ft)	Inclination (°)	Azimuth (°)	Vertical Depth (ft)	+N/-S (ft)	+E/-W (ft)	Vertical Section (ft)	Dogleg Rate (°/100usft)	Build Rate (°/100usft)	Turn Rate (°/100usft)
8,227.0	89.80	271.40	6,853.6	-287.4	-1,227.7	1,235.9	0.63	-0.44	-0.44
<b>Deepest TVD Drilled - 6853.59' TVD</b>									
8,316.0	91.30	271.30	6,852.7	-285.3	-1,316.7	1,324.7	1.69	1.69	-0.11
8,406.0	90.80	271.60	6,851.1	-283.0	-1,406.6	1,414.6	0.65	-0.56	0.33
8,496.0	90.60	270.90	6,850.0	-281.1	-1,496.6	1,504.5	0.81	-0.22	-0.78
8,586.0	90.30	270.70	6,849.3	-279.8	-1,586.6	1,594.4	0.40	-0.33	-0.22
8,676.0	89.40	270.70	6,849.5	-278.7	-1,676.6	1,684.3	1.00	-1.00	0.00
8,792.0	90.70	271.30	6,849.4	-276.7	-1,792.6	1,800.1	1.23	1.12	0.52
8,882.0	90.80	270.00	6,848.2	-275.7	-1,882.5	1,890.1	1.45	0.11	-1.44
8,971.0	91.10	269.70	6,846.8	-275.9	-1,971.5	1,979.0	0.48	0.34	-0.34
9,061.0	89.90	269.20	6,846.0	-276.8	-2,061.5	2,069.0	1.44	-1.33	-0.56
9,151.0	90.00	269.20	6,846.1	-278.0	-2,151.5	2,159.0	0.11	0.11	0.00
9,241.0	88.90	268.10	6,846.9	-280.1	-2,241.5	2,249.0	1.73	-1.22	-1.22
9,331.0	88.90	268.10	6,848.6	-283.1	-2,331.4	2,338.9	0.00	0.00	0.00
9,421.0	88.80	266.70	6,850.5	-287.2	-2,421.3	2,428.9	1.56	-0.11	-1.56
9,511.0	90.10	268.60	6,851.3	-290.9	-2,511.2	2,518.9	2.56	1.44	2.11
9,601.0	90.50	268.60	6,850.8	-293.1	-2,601.2	2,608.9	0.44	0.44	0.00
9,691.0	90.30	270.40	6,850.2	-293.9	-2,691.2	2,698.9	2.01	-0.22	2.00
9,781.0	90.90	270.00	6,849.3	-293.6	-2,781.2	2,788.8	0.80	0.67	-0.44
9,871.0	91.20	269.70	6,847.6	-293.8	-2,871.1	2,878.8	0.47	0.33	-0.33
9,961.0	89.70	270.90	6,846.9	-293.3	-2,961.1	2,968.7	2.13	-1.67	1.33
10,051.0	89.60	270.40	6,847.5	-292.3	-3,051.1	3,058.6	0.57	-0.11	-0.56
10,141.0	89.50	269.70	6,848.2	-292.2	-3,141.1	3,148.6	0.79	-0.11	-0.78
10,230.0	89.90	270.90	6,848.6	-291.8	-3,230.1	3,237.5	1.42	0.45	1.35
10,320.0	89.30	270.20	6,849.3	-290.9	-3,320.1	3,327.4	1.02	-0.67	-0.78
10,410.0	90.10	271.10	6,849.7	-289.9	-3,410.1	3,417.4	1.34	0.89	1.00
10,499.0	90.50	270.90	6,849.3	-288.3	-3,499.1	3,506.3	0.50	0.45	-0.22
10,590.0	90.50	270.60	6,848.5	-287.1	-3,590.1	3,597.2	0.33	0.00	-0.33
10,679.0	90.60	269.30	6,847.6	-287.2	-3,679.1	3,686.1	1.46	0.11	-1.46
10,769.0	90.00	270.60	6,847.2	-287.3	-3,769.1	3,776.1	1.59	-0.67	1.44
10,859.0	90.10	270.70	6,847.1	-286.3	-3,859.1	3,866.0	0.16	0.11	0.11
10,949.0	90.40	270.40	6,846.7	-285.4	-3,949.1	3,955.9	0.47	0.33	-0.33
11,039.0	90.90	270.00	6,845.7	-285.1	-4,039.1	4,045.9	0.71	0.56	-0.44
11,128.0	89.70	269.70	6,845.2	-285.3	-4,128.1	4,134.8	1.39	-1.35	-0.34
11,219.0	90.30	269.00	6,845.2	-286.4	-4,219.0	4,225.8	1.01	0.66	-0.77
11,309.0	89.70	270.20	6,845.2	-287.0	-4,309.0	4,315.8	1.49	-0.67	1.33
11,399.0	90.00	270.60	6,845.4	-286.4	-4,399.0	4,405.7	0.56	0.33	0.44
11,489.0	90.70	270.20	6,844.9	-285.7	-4,489.0	4,495.7	0.90	0.78	-0.44
11,578.0	89.50	272.00	6,844.7	-284.0	-4,578.0	4,584.5	2.43	-1.35	2.02
11,668.0	89.90	270.60	6,845.2	-282.0	-4,668.0	4,674.4	1.62	0.44	-1.56
11,757.0	90.40	269.90	6,845.0	-281.6	-4,757.0	4,763.4	0.97	0.56	-0.79
11,846.0	90.70	269.50	6,844.1	-282.1	-4,846.0	4,852.3	0.56	0.34	-0.45
11,936.0	89.60	271.30	6,843.9	-281.4	-4,936.0	4,942.3	2.34	-1.22	2.00

<b>Company:</b>	PDC Energy Inc. DJ Basin	<b>Local Co-ordinate Reference:</b>	Well Stella 2N
<b>Project:</b>	SEC.22-T5N-R65W	<b>TVD Reference:</b>	WELL @ 4670.0ft (RKB - 23')
<b>Site:</b>	Stella 5N65W22Y Pad Sec.22-T5N-R65W	<b>MD Reference:</b>	WELL @ 4670.0ft (RKB - 23')
<b>Well:</b>	Stella 2N	<b>North Reference:</b>	True
<b>Wellbore:</b>	Wellbore #1	<b>Survey Calculation Method:</b>	Minimum Curvature
<b>Design:</b>	Wellbore #1	<b>Database:</b>	US_EDM

Survey										
Measured Depth (ft)	Inclination (°)	Azimuth (°)	Vertical Depth (ft)	+N/-S (ft)	+E/-W (ft)	Vertical Section (ft)	Dogleg Rate (°/100usft)	Build Rate (°/100usft)	Turn Rate (°/100usft)	
12,026.0	90.00	271.80	6,844.2	-279.0	-5,025.9	5,032.1	0.71	0.44	0.56	
12,116.0	90.30	272.30	6,844.0	-275.8	-5,115.9	5,121.9	0.65	0.33	0.56	
12,206.0	90.90	272.50	6,843.0	-272.0	-5,205.8	5,211.7	0.70	0.67	0.22	
12,295.0	89.60	270.60	6,842.6	-269.6	-5,294.8	5,300.5	2.59	-1.46	-2.13	
12,385.0	89.80	269.80	6,843.1	-269.3	-5,384.8	5,390.5	0.92	0.22	-0.89	
12,475.0	90.30	269.70	6,843.0	-269.7	-5,474.8	5,480.4	0.57	0.56	-0.11	
12,565.0	90.70	268.80	6,842.2	-270.9	-5,564.7	5,570.4	1.09	0.44	-1.00	
12,655.0	89.00	268.80	6,842.5	-272.7	-5,654.7	5,660.4	1.89	-1.89	0.00	
12,744.0	89.40	268.50	6,843.7	-274.8	-5,743.7	5,749.4	0.56	0.45	-0.34	
12,834.0	89.70	267.90	6,844.4	-277.7	-5,833.6	5,839.4	0.75	0.33	-0.67	
12,924.0	88.70	269.70	6,845.7	-279.6	-5,923.6	5,929.4	2.29	-1.11	2.00	
13,014.0	89.20	269.30	6,847.3	-280.3	-6,013.6	6,019.3	0.71	0.56	-0.44	
13,103.0	89.90	269.30	6,848.0	-281.4	-6,102.6	6,108.3	0.79	0.79	0.00	
13,193.0	90.70	269.20	6,847.5	-282.6	-6,192.6	6,198.3	0.90	0.89	-0.11	
13,283.0	90.30	270.40	6,846.8	-282.9	-6,282.6	6,288.3	1.41	-0.44	1.33	
13,373.0	90.90	269.70	6,845.8	-282.8	-6,372.5	6,378.2	1.02	0.67	-0.78	
13,463.0	91.70	269.30	6,843.8	-283.6	-6,462.5	6,468.2	0.99	0.89	-0.44	
13,553.0	89.80	269.90	6,842.6	-284.3	-6,552.5	6,558.1	2.21	-2.11	0.67	
13,643.0	90.30	269.50	6,842.5	-284.7	-6,642.5	6,648.1	0.71	0.56	-0.44	
13,733.0	91.00	269.00	6,841.5	-285.9	-6,732.5	6,738.1	0.96	0.78	-0.56	
13,823.0	89.40	270.70	6,841.2	-286.1	-6,822.5	6,828.0	2.59	-1.78	1.89	
13,913.0	89.70	270.40	6,841.9	-285.3	-6,912.5	6,918.0	0.47	0.33	-0.33	
14,003.0	89.80	269.90	6,842.3	-285.0	-7,002.5	7,007.9	0.57	0.11	-0.56	
14,092.0	90.40	269.30	6,842.1	-285.7	-7,091.5	7,096.9	0.95	0.67	-0.67	
14,182.0	90.30	271.10	6,841.6	-285.3	-7,181.5	7,186.8	2.00	-0.11	2.00	
14,271.0	90.70	270.70	6,840.8	-283.9	-7,270.5	7,275.7	0.64	0.45	-0.45	
14,361.0	89.10	271.10	6,841.0	-282.5	-7,360.4	7,365.6	1.83	-1.78	0.44	
14,450.0	89.20	271.10	6,842.3	-280.8	-7,449.4	7,454.5	0.11	0.11	0.00	
14,540.0	89.10	270.70	6,843.6	-279.4	-7,539.4	7,544.4	0.46	-0.11	-0.44	
14,630.0	89.80	270.00	6,844.5	-278.9	-7,629.4	7,634.3	1.10	0.78	-0.78	
14,720.0	90.20	269.50	6,844.5	-279.3	-7,719.4	7,724.3	0.71	0.44	-0.56	
14,809.0	90.90	269.20	6,843.6	-280.3	-7,808.4	7,813.3	0.86	0.79	-0.34	
14,899.0	89.70	269.70	6,843.2	-281.1	-7,898.4	7,903.3	1.44	-1.33	0.56	
14,988.0	90.30	269.70	6,843.2	-281.6	-7,987.4	7,992.2	0.67	0.67	0.00	
15,078.0	90.80	269.20	6,842.3	-282.5	-8,077.4	8,082.2	0.79	0.56	-0.56	
15,168.0	88.50	270.20	6,842.8	-282.9	-8,167.3	8,172.2	2.79	-2.56	1.11	
15,257.0	88.50	269.70	6,845.2	-283.0	-8,256.3	8,261.1	0.56	0.00	-0.56	
15,347.0	88.80	269.20	6,847.3	-283.9	-8,346.3	8,351.1	0.65	0.33	-0.56	
15,436.0	89.10	270.00	6,848.9	-284.5	-8,435.3	8,440.0	0.96	0.34	0.90	
15,526.0	89.60	269.20	6,849.9	-285.1	-8,525.3	8,530.0	1.05	0.56	-0.89	
15,616.0	90.60	268.80	6,849.8	-286.7	-8,615.2	8,620.0	1.20	1.11	-0.44	
15,705.0	90.20	270.70	6,849.2	-287.1	-8,704.2	8,708.9	2.18	-0.45	2.13	
15,795.0	91.00	270.00	6,848.2	-286.5	-8,794.2	8,798.9	1.18	0.89	-0.78	

<b>Company:</b>	PDC Energy Inc. DJ Basin	<b>Local Co-ordinate Reference:</b>	Well Stella 2N
<b>Project:</b>	SEC.22-T5N-R65W	<b>TVD Reference:</b>	WELL @ 4670.0ft (RKB - 23')
<b>Site:</b>	Stella 5N65W22Y Pad Sec.22-T5N-R65W	<b>MD Reference:</b>	WELL @ 4670.0ft (RKB - 23')
<b>Well:</b>	Stella 2N	<b>North Reference:</b>	True
<b>Wellbore:</b>	Wellbore #1	<b>Survey Calculation Method:</b>	Minimum Curvature
<b>Design:</b>	Wellbore #1	<b>Database:</b>	US_EDM

Measured Depth (ft)	Inclination (°)	Azimuth (°)	Vertical Depth (ft)	+N/-S (ft)	+E/-W (ft)	Vertical Section (ft)	Dogleg Rate (°/100usft)	Build Rate (°/100usft)	Turn Rate (°/100usft)
15,885.0	89.80	271.50	6,847.6	-285.4	-8,884.2	8,888.8	2.13	-1.33	1.67
15,975.0	90.30	270.70	6,847.5	-283.6	-8,974.2	8,978.7	1.05	0.56	-0.89
16,065.0	91.30	270.20	6,846.3	-282.9	-9,064.2	9,068.6	1.24	1.11	-0.56
16,154.0	89.70	270.00	6,845.5	-282.8	-9,153.2	9,157.5	1.81	-1.80	-0.22
16,244.0	90.40	269.70	6,845.4	-283.0	-9,243.2	9,247.5	0.85	0.78	-0.33
16,334.0	91.10	269.30	6,844.2	-283.8	-9,333.2	9,337.5	0.90	0.78	-0.44
16,423.0	89.60	267.40	6,843.7	-286.3	-9,422.1	9,426.5	2.72	-1.69	-2.13
16,512.0	89.70	268.30	6,844.2	-289.7	-9,511.1	9,515.5	1.02	0.11	1.01
16,558.0	89.60	267.90	6,844.5	-291.2	-9,557.0	9,561.5	0.90	-0.22	-0.87
16,616.0	89.60	267.90	6,844.9	-293.3	-9,615.0	9,619.5	0.00	0.00	0.00

**BHL 620'FSL & 500'FWL, Sec.21**

Target Name	Dip Angle (°)	Dip Dir. (°)	TVD (ft)	+N/-S (ft)	+E/-W (ft)	Northing (usft)	Easting (usft)	Latitude	Longitude
SHL 861'FSL & 438'FEL - hit/miss target - Shape - Point	0.00	0.00	1.0	0.0	0.0	1,382,384.92	3,239,173.98	40.379870	-104.641480
BHL 620'FSL & 500'FWL - survey misses target center by 5.0ft at 16616.0ft MD (6844.9 TVD, -293.3 N, -9615.0 E) - Point	0.00	0.00	6,840.0	-293.0	-9,616.1	1,381,998.81	3,229,561.57	40.379061	-104.675995

Measured Depth (ft)	Vertical Depth (ft)	Local Coordinates +N/-S (ft)	+E/-W (ft)	Comment
7,011.6	6,772.5	-244.1	-22.0	TPZ - 460' Setback - 617'FSL & 460'FEL, SEC.22
8,227.0	6,853.6	-287.4	-1,227.7	Deepest TVD Drilled - 6853.59' TVD

Checked By: \_\_\_\_\_ Approved By: \_\_\_\_\_ Date: \_\_\_\_\_