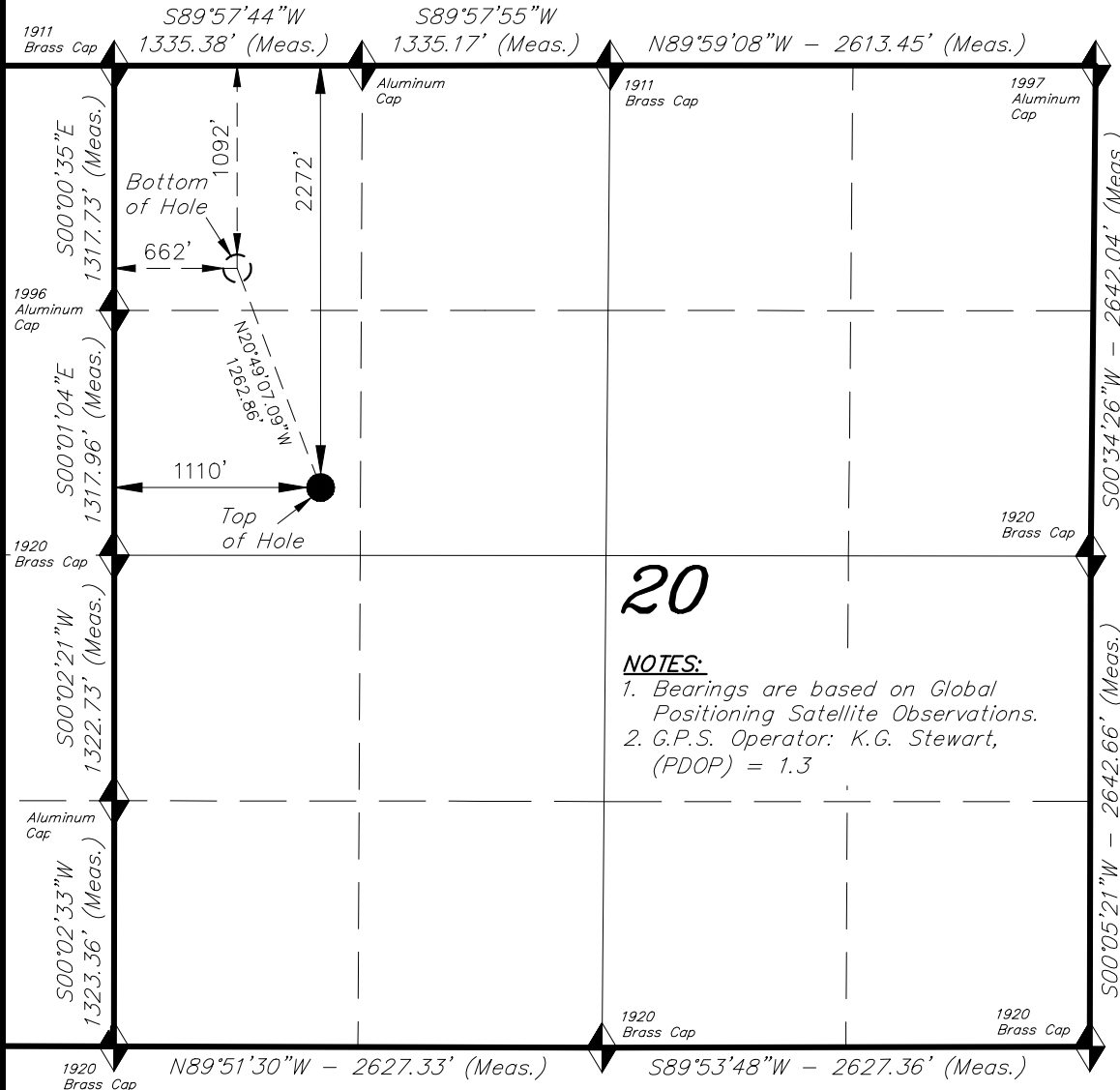


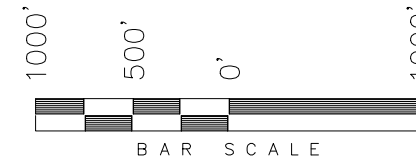
T7S, R94W, 6th P.M.

CAERUS OIL & GAS LLC



WELL LOCATION, RULISON FEDERAL 11D-20, LOCATED AS SHOWN IN THE SW 1/4 NW 1/4 OF SECTION 20, T7S, R94W, 6th P.M. GARFIELD COUNTY, COLORADO.

TARGET BOTTOM HOLE, RULISON FEDERAL 11D-20, LOCATED AS SHOWN IN THE NW 1/4 NW 1/4 OF SECTION 20, T7S, R94W, 6th P.M. GARFIELD COUNTY, COLORADO.



◆ = SECTION CORNERS LOCATED

**WELL LOCATION:
RULISON FEDERAL 11D-20**

ELEV. EXIST. GRADED GROUND = 7906'

THIS IS TO CERTIFY THAT THE ABOVE PLAT WAS PREPARED FROM FIELD NOTES OF REAL SURVEYS MADE BY ME OR UNDER MY SUPERVISION. THE LOCATION HAS BEEN STAKED ON THE GROUND AS SHOWN ON THE PLAT, AND THAT THE SAME ARE TRUE AND CORRECT TO THE BEST OF MY KNOWLEDGE AND BELIEF.

07-10-17
30125
REGISTERED LAND SURVEYOR
REGISTRATION NO. 30125
STATE OF COLORADO
TRI STATE LAND SURVEYING & CONSULTING

IMPROVEMENT NOTE:
See addendum to legal plat
(Sheet 2) for visible improvements
within 500' of the proposed location.

BASIS OF ELEV;
Elevations are based on
an N.G.S. OPUS Correction.
LOCATION: LAT. 40°46'03.41"
LONG. 103°46'26.97"(Tristate Aluminum
Cap) NAVD 88 Elev. 4750.22'

| NAD 83 (SURFACE LOCATION) | | NAD 83 (BOTTOM HOLE) | |
|--|------------------|--|------------------|
| LATITUDE = 39°25'31.74" (39.425483) | | LATITUDE = 39°25'43.40" (39.428722) | |
| LONGITUDE = 107°54'55.86" (107.915516) | | LONGITUDE = 107°55'01.58" (107.917105) | |
| UTM ZONE N12 FEET | | UTM ZONE N12 FEET | |
| N: = 14332437.686 | E: = 2511507.039 | N: = 14333602.174 | E: = 2511018.075 |
| NAD 27 (SURFACE LOCATION) | | NAD 27 (BOTTOM HOLE) | |
| LATITUDE = 39°25'31.81" (39.425504) | | LATITUDE = 39°25'43.48" (39.428743) | |
| LONGITUDE = 107°54'53.61" (107.914892) | | LONGITUDE = 107°54'59.33" (107.916480) | |
| UTM ZONE N12 FEET | | UTM ZONE N12 FEET | |
| N: = 14331766.531 | E: = 2511705.758 | N: = 14332931.000 | E: = 2511216.800 |

TRI STATE LAND SURVEYING & CONSULTING
180 NORTH VERNAL AVE. - VERNAL, UTAH 84078
(435) 781-2501

| | | |
|----------------------------|---------------------|-------------------|
| DATE SURVEYED: 07-15-15 | SURVEYED BY: K.G.S. | SHEET 1.35 |
| DATE DRAWN: 07-10-17 | DRAWN BY: F.T.M. | |
| REVISED: | SCALE: 1" = 1000' | |