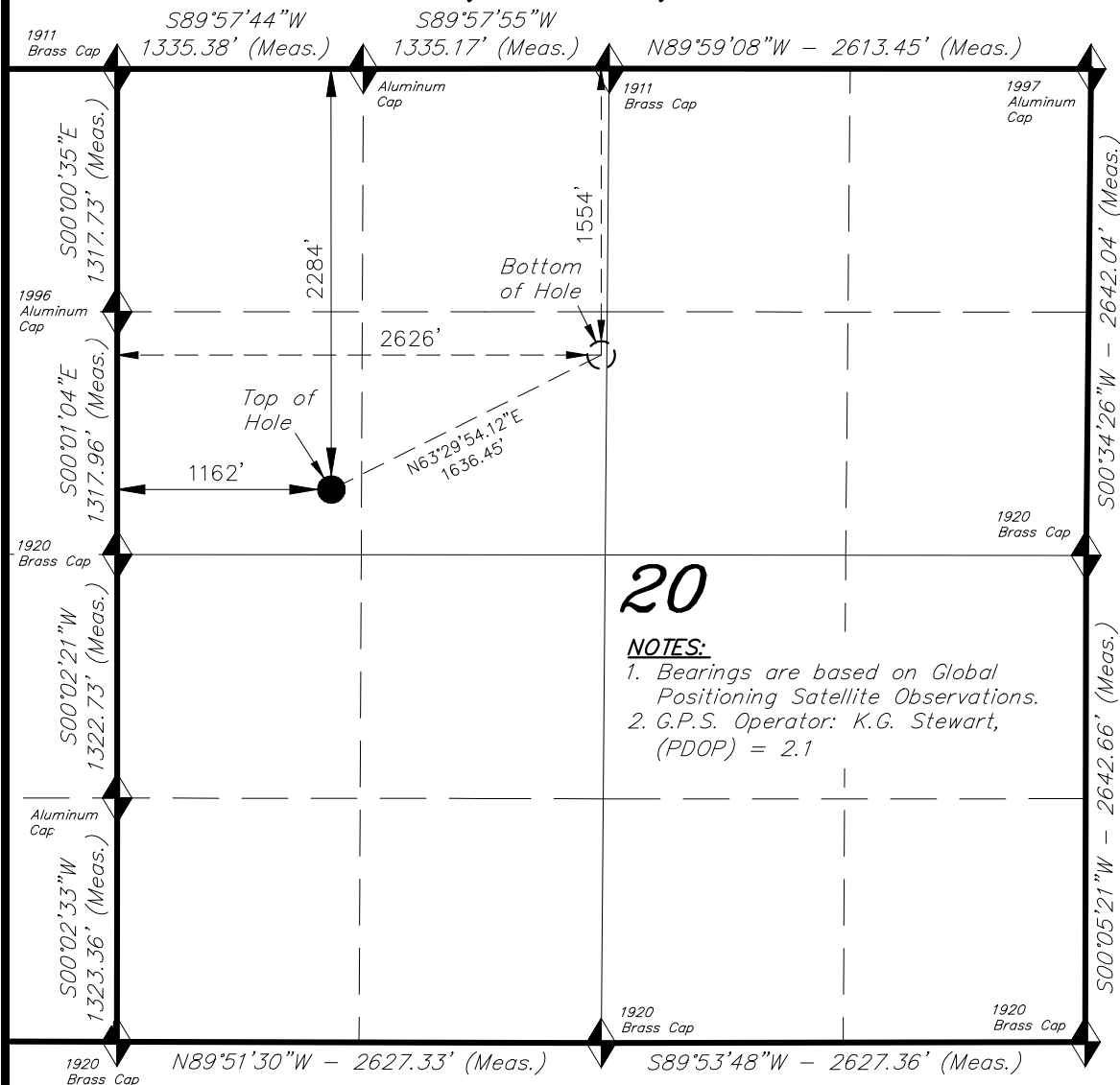


# T7S, R94W, 6th P.M.



20

## NOTES:

1. Bearings are based on Global Positioning Satellite Observations.
2. G.P.S. Operator: K.G. Stewart, (PDOP) = 2.1

## IMPROVEMENT NOTE:

See addendum to legal plat (Sheet 2) for visible improvements within 500' of the proposed location.

## BASIS OF ELEV;

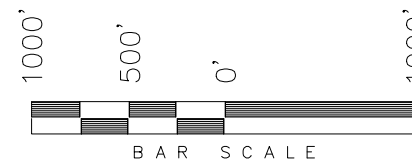
Elevations are based on an N.G.S. OPUS Correction.  
LOCATION: LAT. 40°46'03.41"  
LONG. 103°46'26.97"(Tristate Aluminum Cap) NAVD 88 Elev. 4750.22'

NAD 83 (SURFACE LOCATION)		NAD 83 (BOTTOM HOLE)	
LATITUDE = 39°25'31.63" (39.425452)		LATITUDE = 39°25'38.84" (39.427456)	
LONGITUDE = 107°54'55.21" (107.915335)		LONGITUDE = 107°54'36.55" (107.910153)	
UTM ZONE N12 FEET		UTM ZONE N12 FEET	
N: = 14332428.249	E: = 2511558.689	N: = 1433208.175	E: = 2512997.508
NAD 27 (SURFACE LOCATION)		NAD 27 (BOTTOM HOLE)	
LATITUDE = 39°25'31.70" (39.425473)		LATITUDE = 39°25'38.92" (39.427477)	
LONGITUDE = 107°54'52.96" (107.914710)		LONGITUDE = 107°54'34.30" (107.909528)	
UTM ZONE N12 FEET		UTM ZONE N12 FEET	
N: = 14331757.095	E: = 2511757.407	N: = 14332537.000	E: = 2513196.200

## CAERUS OIL & GAS LLC

WELL LOCATION, RULISON FEDERAL 22B-20, LOCATED AS SHOWN IN THE SW 1/4 NW 1/4 OF SECTION 20, T7S, R94W, 6th P.M. GARFIELD COUNTY, COLORADO.

TARGET BOTTOM HOLE, RULISON FEDERAL 22B-20, LOCATED AS SHOWN IN THE SE 1/4 NW 1/4 OF SECTION 20, T7S, R94W, 6th P.M. GARFIELD COUNTY, COLORADO.



◆ = SECTION CORNERS LOCATED

## WELL LOCATION: RULISON FEDERAL 22B-20

ELEV. EXIST. GRADED GROUND = 7906'

THIS IS TO CERTIFY THAT THE ABOVE PLAT WAS PREPARED FROM FIELD NOTES OF REAL SURVEYS MADE BY ME OR UNDER MY SUPERVISION. THE LOCATION HAS BEEN STAKED ON THE GROUND AS SHOWN ON THE PLAT, AND THAT THE SAME ARE TRUE AND CORRECT TO THE BEST OF MY KNOWLEDGE AND BELIEF. 07-10-17 # 30125

REGISTERED LAND SURVEYOR  
REGISTRATION NO. 30125  
STATE OF COLORADO

## TRI STATE LAND SURVEYING & CONSULTING

180 NORTH VERNAL AVE. - VERNAL, UTAH 84078  
(435) 781-2501

DATE SURVEYED: 07-15-15	SURVEYED BY: K.G.S.	SHEET  1.28
DATE DRAWN: 07-10-17	DRAWN BY: F.T.M.	
REVISED:	SCALE: 1" = 1000'	