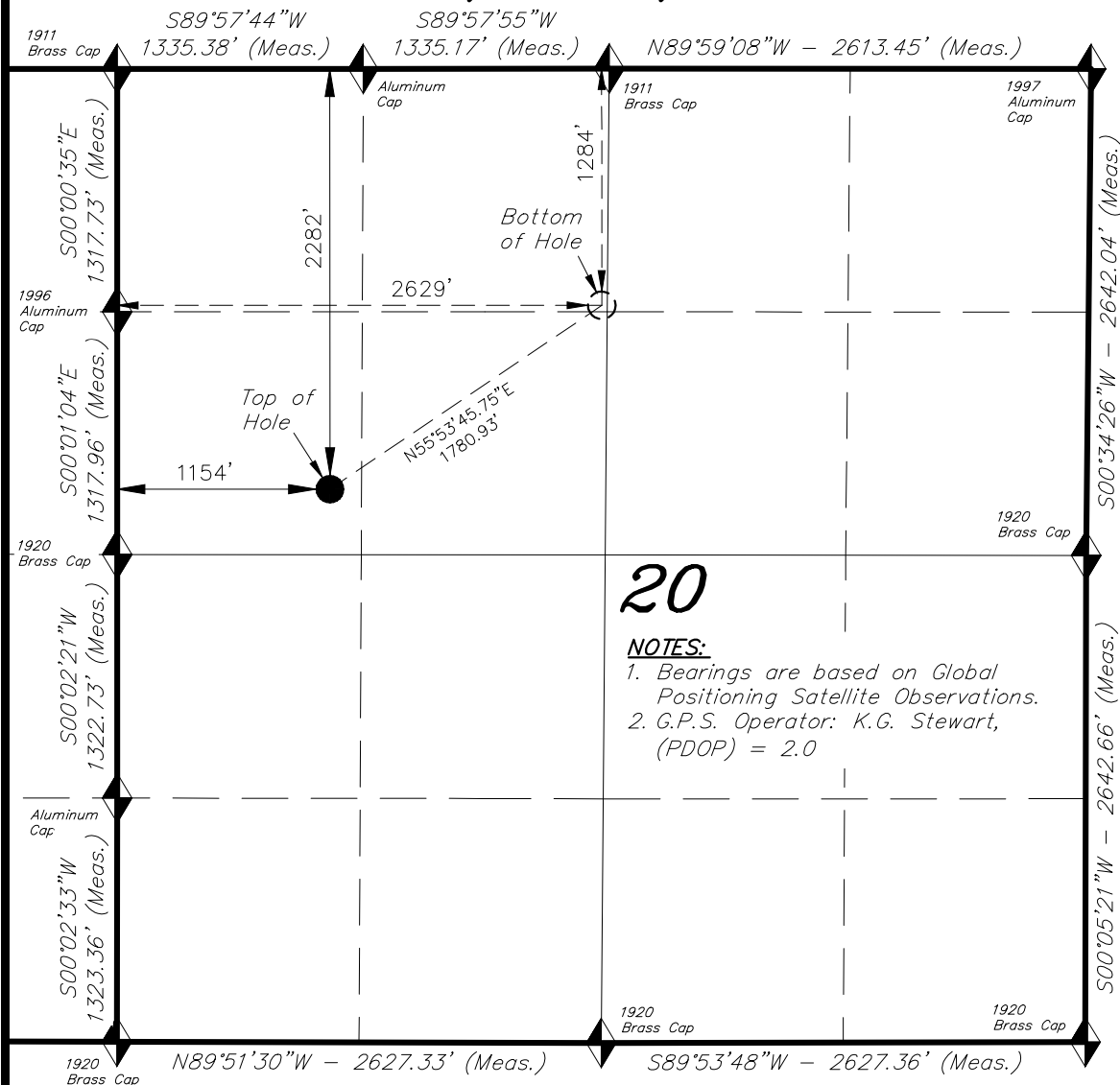


# T7S, R94W, 6th P.M.



20

## NOTES:

1. Bearings are based on Global Positioning Satellite Observations.
2. G.P.S. Operator: K.G. Stewart, (PDOP) = 2.0

IMPROVEMENT NOTE:  
See addendum to legal plat  
(Sheet 2) for visible improvements  
within 500' of the proposed location.

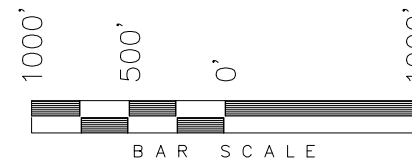
BASIS OF ELEV;  
Elevations are based on  
an N.G.S. OPUS Correction.  
LOCATION: LAT. 40°46'03.41"  
LONG. 103°46'26.97"(Tristate Aluminum  
Cap) NAVD 88 Elev. 4750.22'

NAD 83 (SURFACE LOCATION)		NAD 83 (BOTTOM HOLE)	
LATITUDE = 39°25'31.64" (39.425457)		LATITUDE = 39°25'41.51" (39.428197)	
LONGITUDE = 107°54'55.30" (107.915361)		LONGITUDE = 107°54'36.51" (107.910142)	
UTM ZONE N12 FEET		UTM ZONE N12 FEET	
N: = 14332429.597	E: = 2511551.310	N: = 14333478.080	E: = 2512991.108
NAD 27 (SURFACE LOCATION)		NAD 27 (BOTTOM HOLE)	
LATITUDE = 39°25'31.72" (39.425478)		LATITUDE = 39°25'41.58" (39.428218)	
LONGITUDE = 107°54'53.05" (107.914736)		LONGITUDE = 107°54'34.27" (107.909518)	
UTM ZONE N12 FEET		UTM ZONE N12 FEET	
N: = 14331758.443	E: = 2511750.028	N: = 14332806.900	E: = 2513189.800

## CAERUS OIL & GAS LLC

WELL LOCATION, RULISON FEDERAL 22A-20,  
LOCATED AS SHOWN IN THE SW 1/4  
NW 1/4 OF SECTION 20, T7S, R94W,  
6th P.M. GARFIELD COUNTY, COLORADO.

TARGET BOTTOM HOLE, RULISON FEDERAL  
22A-20, LOCATED AS SHOWN IN THE  
NE 1/4 NW 1/4 OF SECTION 20, T7S, R94W,  
6th P.M. GARFIELD COUNTY, COLORADO.



◆ = SECTION CORNERS LOCATED

## WELL LOCATION: RULISON FEDERAL 22A-20

ELEV. EXIST. GRADED GROUND = 7906'

THIS IS TO CERTIFY THAT THE ABOVE PLAT WAS  
PREPARED FROM FIELD NOTES OF REAL SURVEYS  
MADE BY ME OR UNDER MY SUPERVISION. THE  
LOCATION HAS BEEN STATIONED ON THE GROUND AS  
SHOWN ON THE PLAT, AND THAT THE SAME ARE  
TRUE AND CORRECT TO THE BEST OF MY  
KNOWLEDGE AND BELIEF. 07-10-17  
# 30125

REGISTERED LAND SURVEYOR  
REGISTRATION NO. 30125  
STATE OF COLORADO

## TRI STATE LAND SURVEYING & CONSULTING

180 NORTH VERNAL AVE. - VERNAL, UTAH 84078  
(435) 781-2501

DATE SURVEYED: 07-15-15	SURVEYED BY: K.G.S.	SHEET  1.29
DATE DRAWN: 07-10-17	DRAWN BY: F.T.M.	
REVISED:	SCALE: 1" = 1000'	