



RESERVOIR GROUP

Scale: 5" / 100'
Measured Depth Log

Well Name Kiyota 4N-35H-O367

Location Sec: 35 Twp: 3N 67W

State Colorado

County Weld

Country USA

Rig Number Ensign 153

API Number 05-123-45805

AFE # 16190690

Geographic Region Rockies

Field DJ Wattenberg

Spud Date 11/5/2017

Drilling Completed 11/15/2017

Surface Coordinates Sec: 35 T3N R67W

Lat: 40.1755708°
Long: -104.8529033°

Bottom Hole Coordinates Projected BHL
Sec: 35 T3N R67W

Ground Elevation 4,841'

K.B. Elevation 4,864'

Logged Interval 6,600' **To** 11,875'

Total Depth 11,875'

Formation Codell

Type of Drilling Fluid Oil Based Mud

Operator

Company Crestone Peak Resources

Address 370 17th Street #2170
Denver, CO 80202



CRESTONE PEAK

Geologist

Name John Ready

Company Crestone Peak Resources

Address 370 17th Street #2170
Denver, CO 80202



Zone Color Coding

Oil	Condensate	Gas
Note	Core	Pressure
Error	Water	Seal

Other

Services Provided 2-Man Logging, Geosteering

Loggers: Stephen Haroian, Tom Anderson

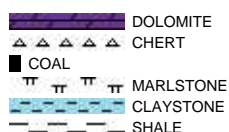
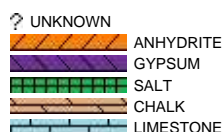
Equipment: ML-522

Address Reservoir Group
6510 Guhn Road
Houston, Texas 77040

Service Start Date: 11/14/2017

Service End Date: 11/16/2017

Rock Types

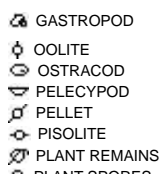


Accessories

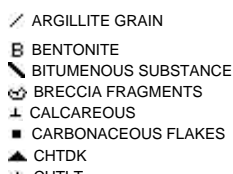
Fossils



F FOSSIL



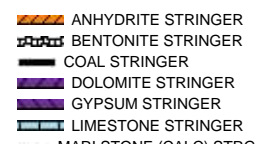
ARGILLACEOUS



GLAUCONITE



Stringer



CEPHALOPOD
CORAL
CRINOID
ECHINOID
FISH
FORAMINIFERA

PLANT SPORES
SCAPHOPOD
STROMATOPOROID

Minerals

ANHYDRITIC

CHITL
COAL - THIN BEDS
DOLOMITIC
FELDSPAR
FERRUGINOUS PELLET
FERRUGINOUS

PYRITE
SALT CAST
SANDY
SILICEOUS
SILTY
TUFFACEOUS

MARLSTONE (CALC) STRG
MARLSTONE (DOL) STRG
SANDSTONE STRINGER
SHALE STRINGER
SILTSTONE STRINGER

Oil Show

DEAD
EVEN
QUESTIONABLE
SPOTTED STAINING

Porosity

EARTHY
FENESTRAL
FRACTURE
INTERCRYSTALLINE
INTEROOLITIC
MOLDIC

ORGANIC
PINPOINT
VUGGY

Engineering

BIT
CASING
CONNECTION (LEFT)
CONNECTION (RIGHT)
CONNECTION GAS
CORE - LOST
CORE - RECOVERED
DST INTERVAL
FAULT

Other Symbols

FORMATION TOP
GAS SHOW
MN DEPTH
NORMAL FAULT
OIL SHOW
OVERTURNED STRATA
REVERSE FAULT
SIDEWALL CORE (LEFT)
SIDEWALL CORE (RIGHT)
SLIDE
SURVEY
TRIP GAS
WIRELINE TESTED - LEFT
WIRELINE TESTED - RT

Rounding

ANGULAR
ROUNDED
SUBANG
SUBRND

Textures

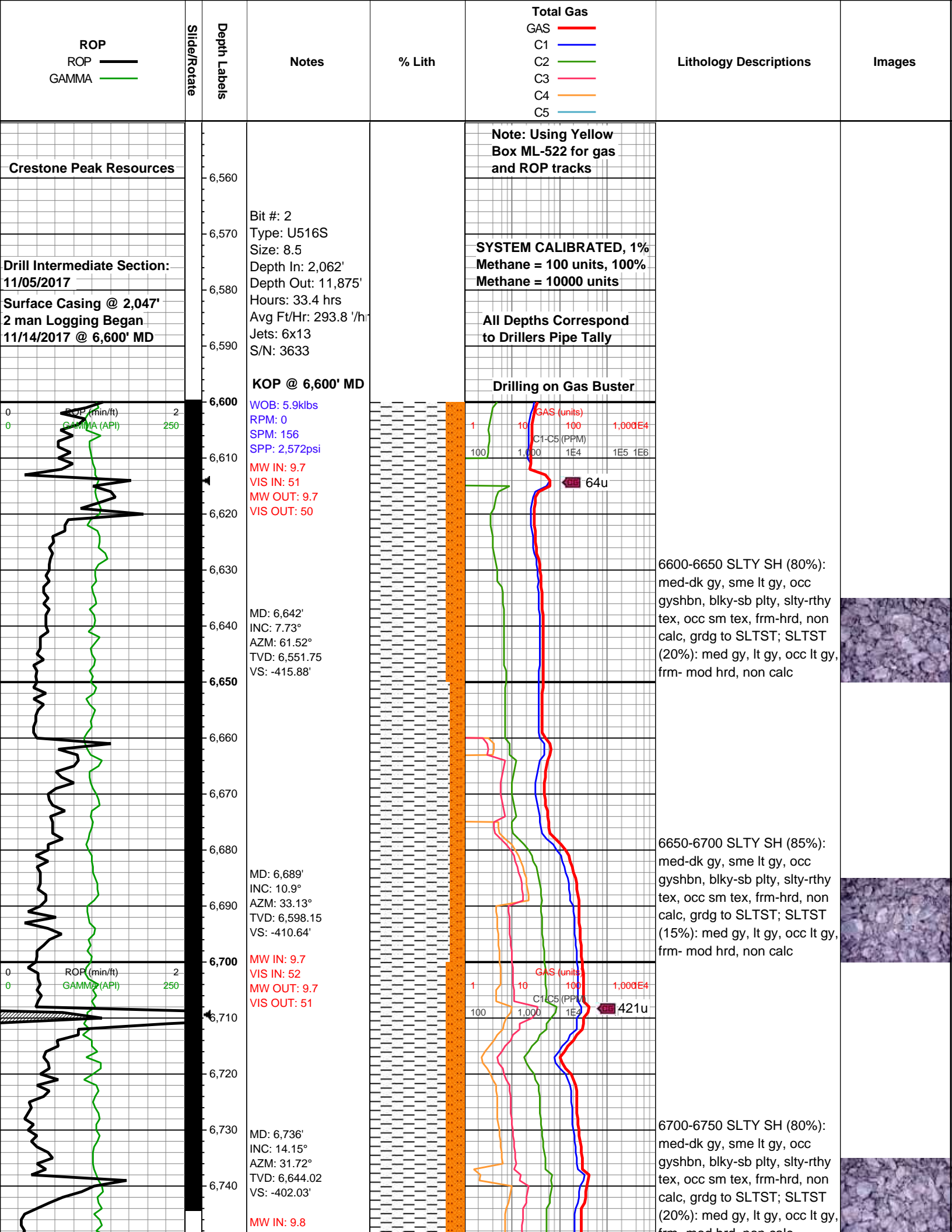
BOUNDSTONE
CHALKY
CRYPTOXLN
EARTHY
FINELYXLN
GRAINSTONE

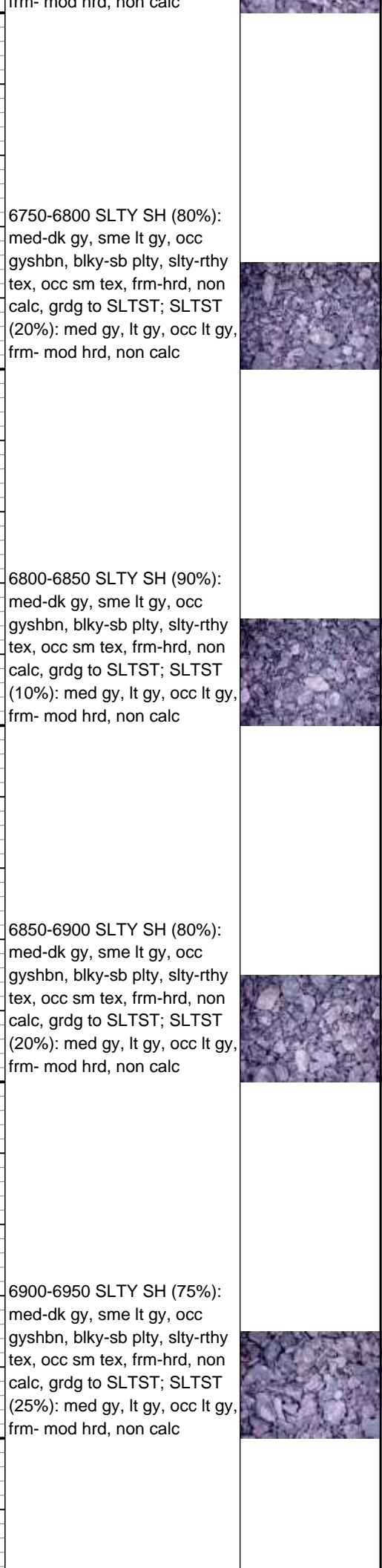
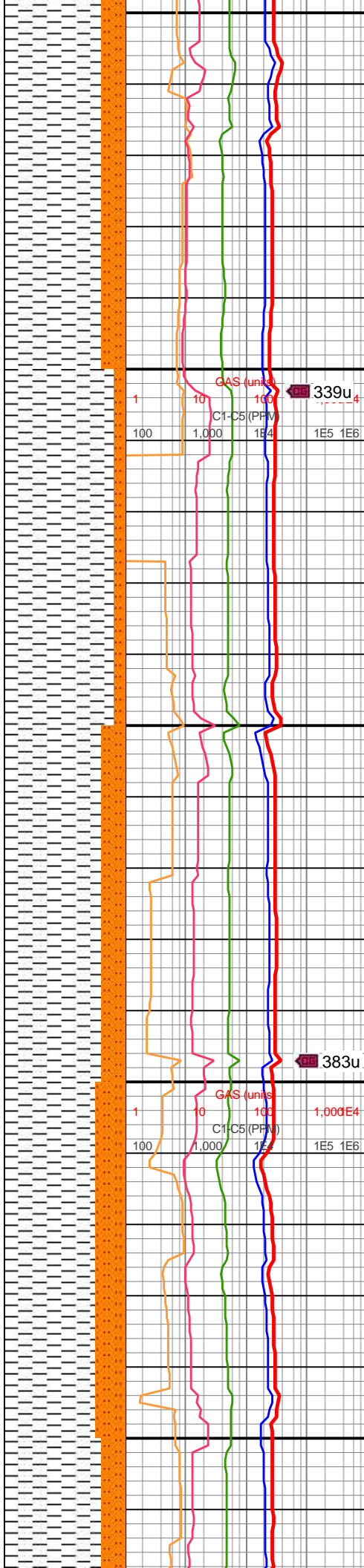
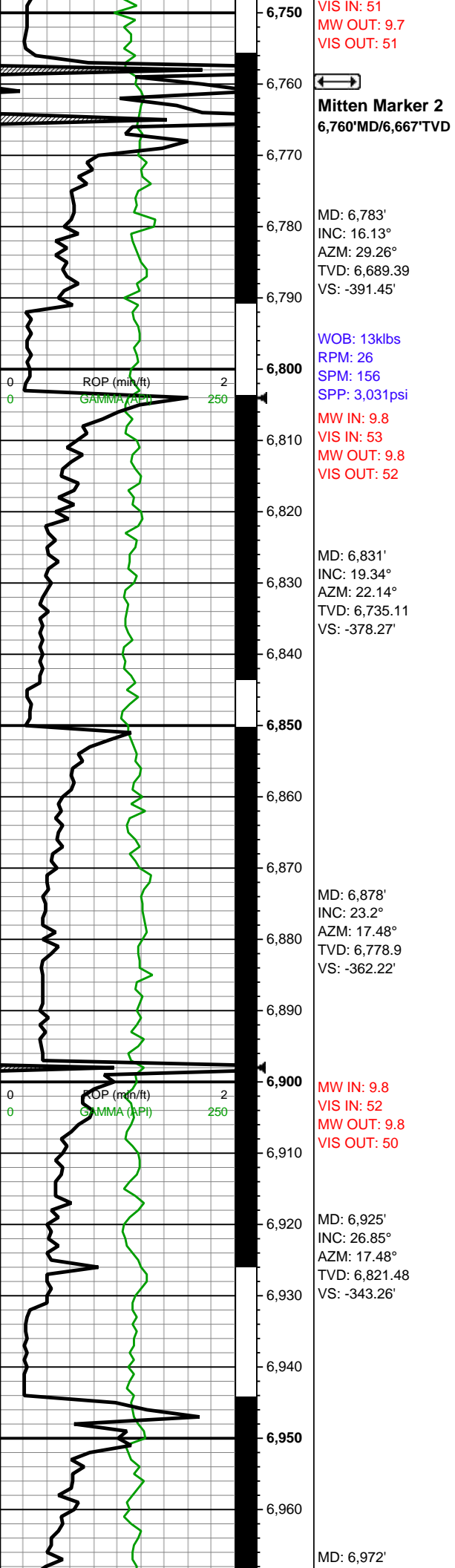
LITHOGRAPHIC

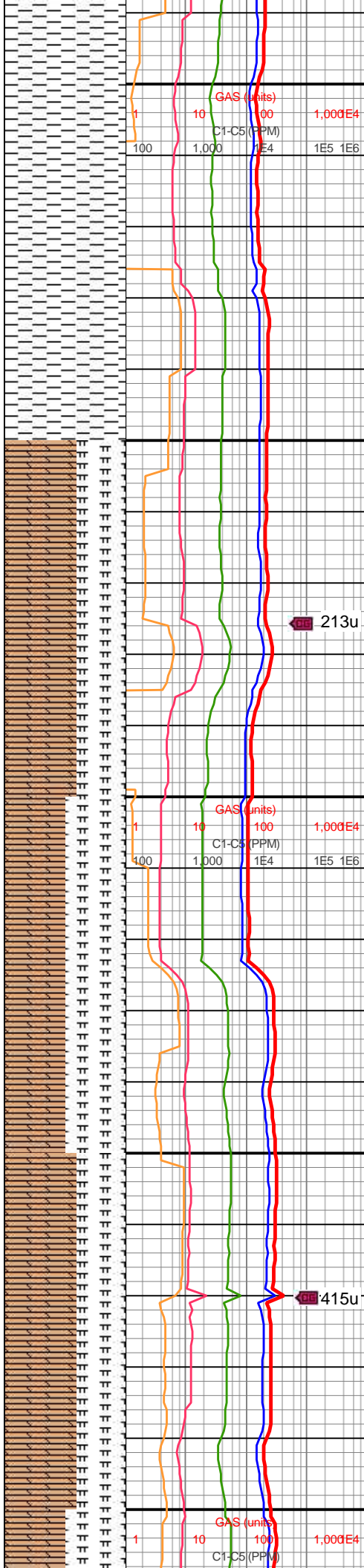
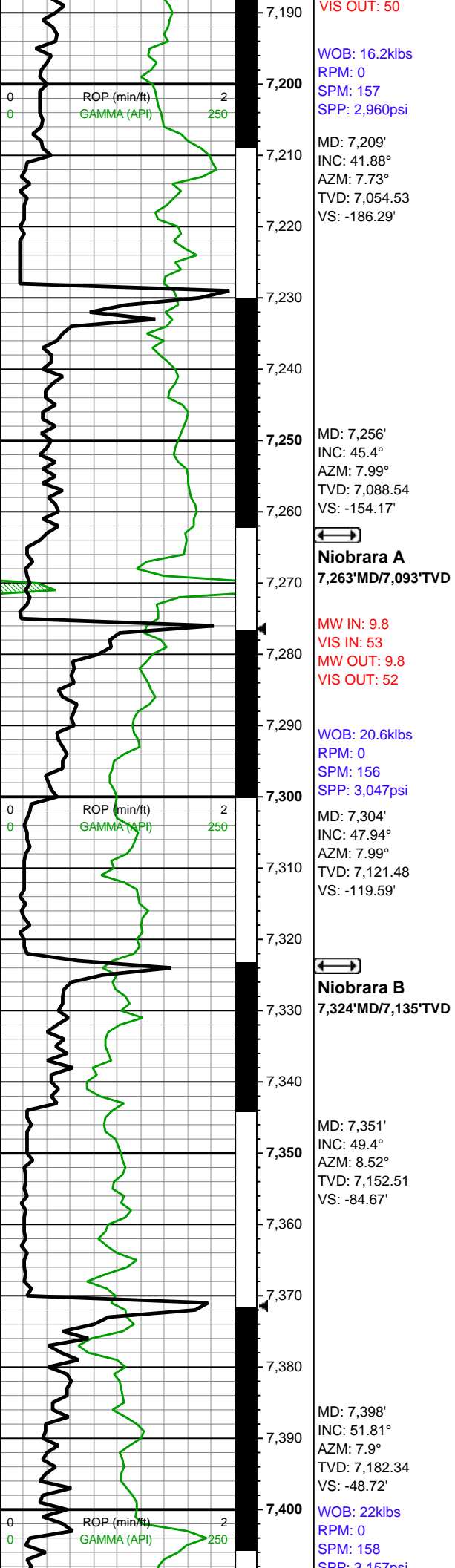
MICROXLN
MUDSTONE
PACKSTONE
WACKESTONE

Sorting

MODERATE
POOR
WELL







med-dk gy, sb blkly-plty, sme
splt, rthy tex, sm tex ip, occ
silty tex, frm-hrd, non-sl calc,
tr pp pyr

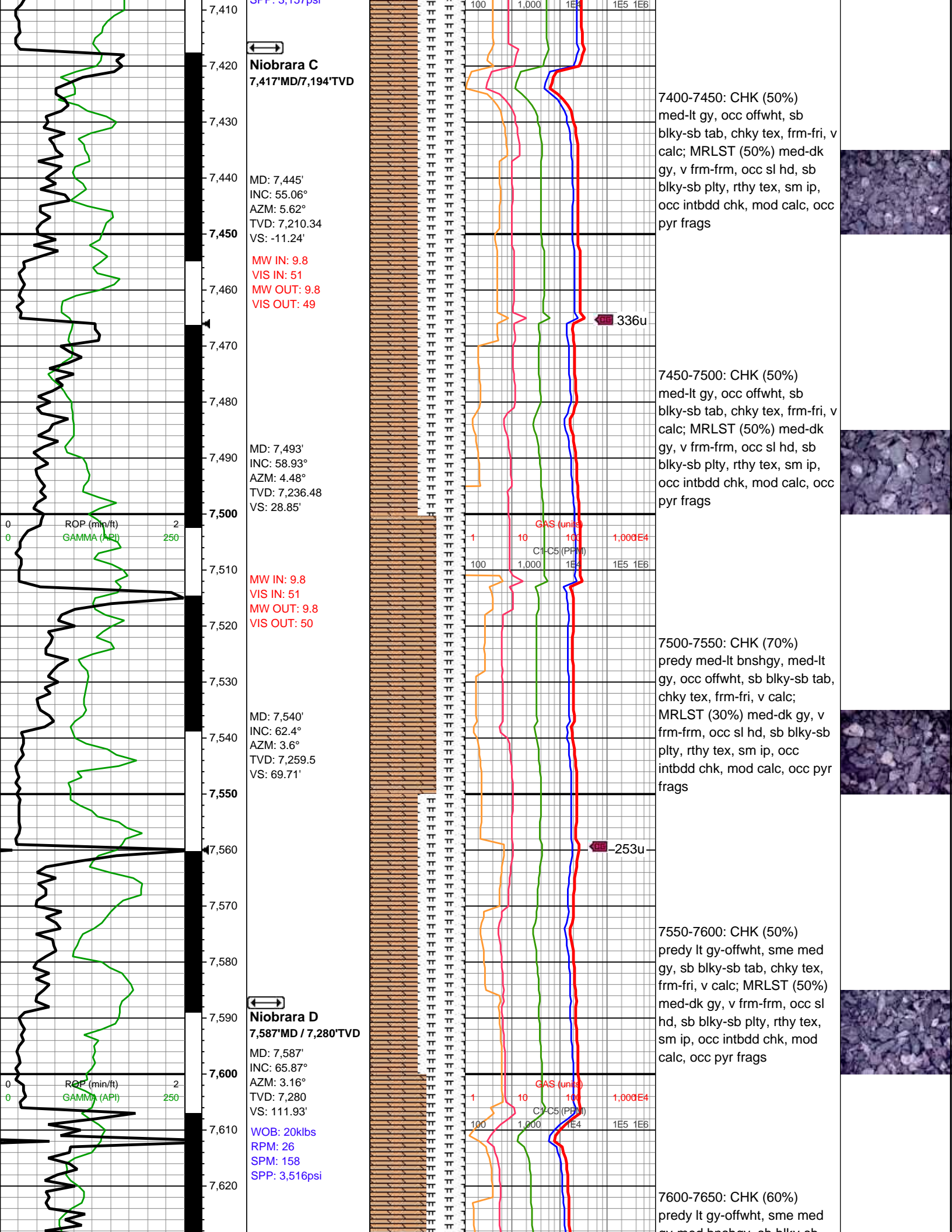
7200-7250 SH (100%):
med-dk gy, sb blkly-plty, sme
splt, rthy tex, sm tex ip, occ
silty tex, frm-hrd, sl calc, tr pp
pyr

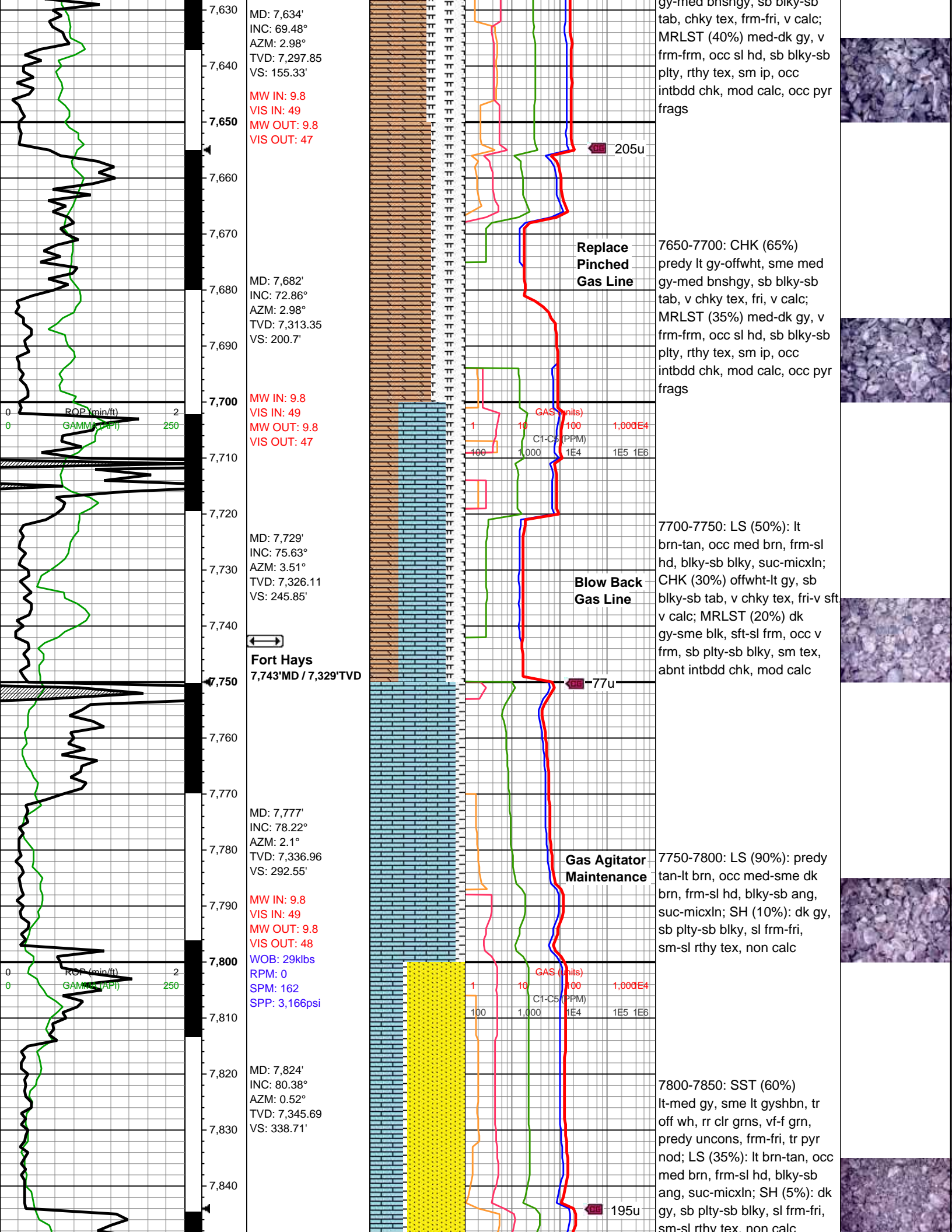
7250-7300: CHK (60%):
med-lt gy, sm dk gy, occ
gyshbn, tr offwht, sb blkly-sb
tab, chky tex, frm-fri, v calc;
MRLST (40%): med-dk gy, v
frm-hd, sb blkly-sb plty, rthy
tex, sm ip, mntr intbdd chk,
mod calc; tr pyr nod

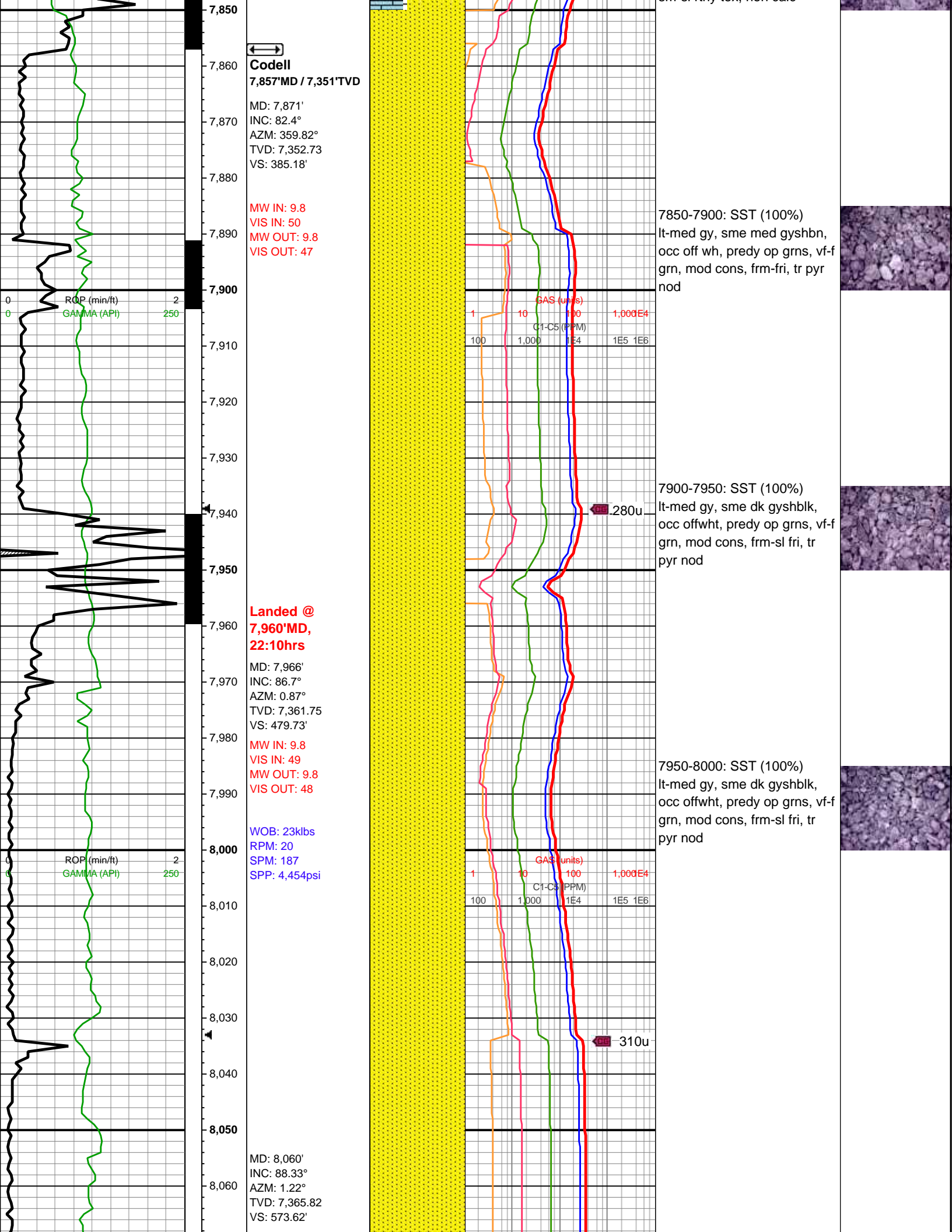
7300-7350: CHK (50%):
med-lt gy, sm dk gy, occ
gyshbn, tr offwht, sb blkly-sb
tab, chky tex, frm-fri, v calc;
MRLST (50%): med-dk gy, v
frm-hd, sb blkly-sb plty, rthy
tex, sm ip, mntr intbdd chk,
mod calc; tr pyr nod

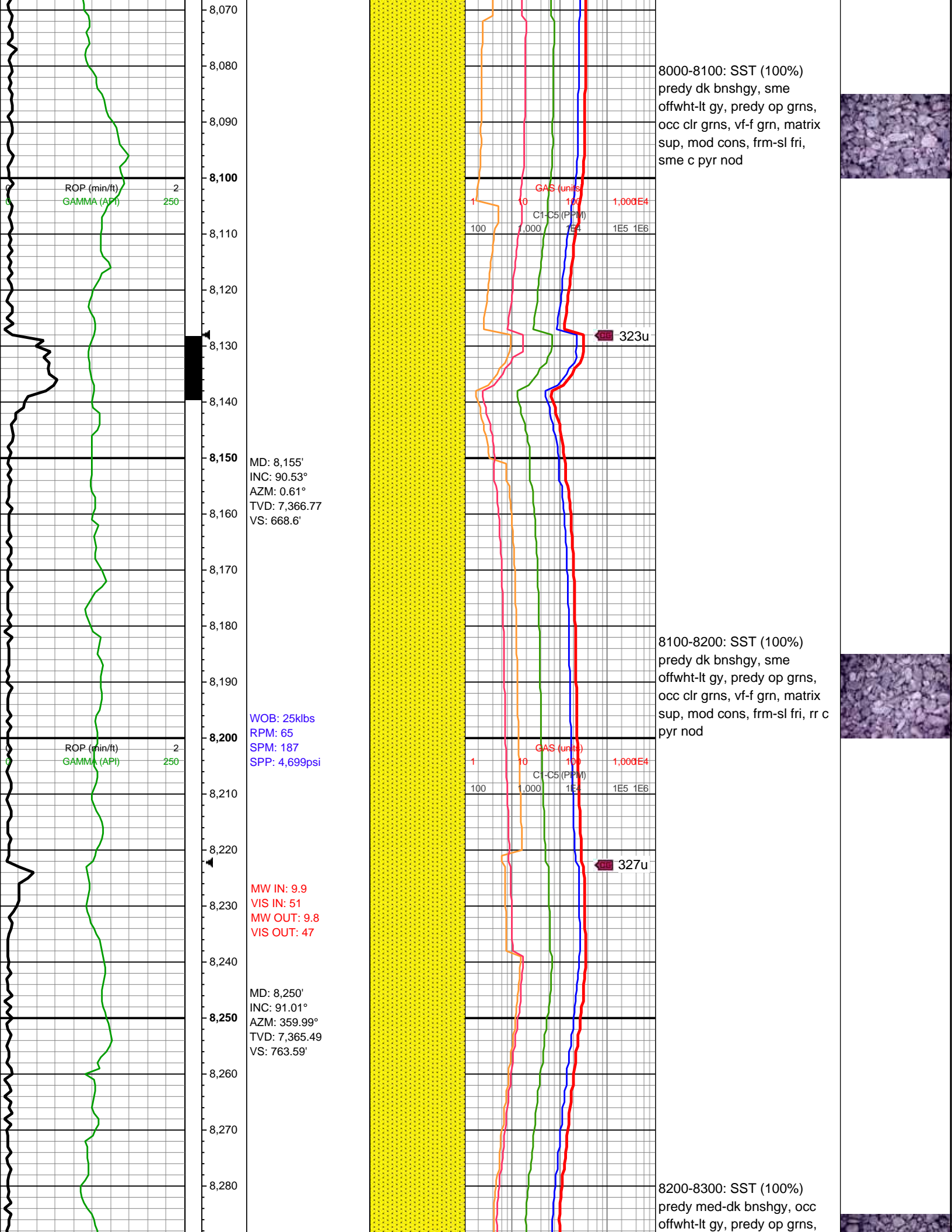
7350-7400: CHK (60%):
med-lt gy, sm dk gy, occ
gyshbn, tr offwht, sb blkly-sb
tab, chky tex, frm-fri, v calc;
MRLST (40%): med-dk gy, v
frm-hd, sb blkly-sb plty, rthy
tex, sm ip, mntr intbdd chk,
mod calc; tr pyr nod

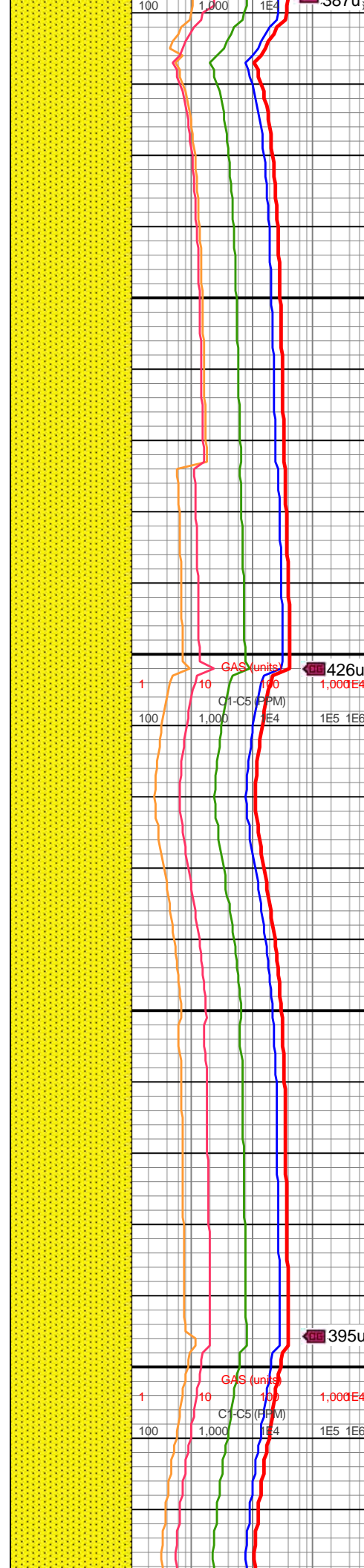
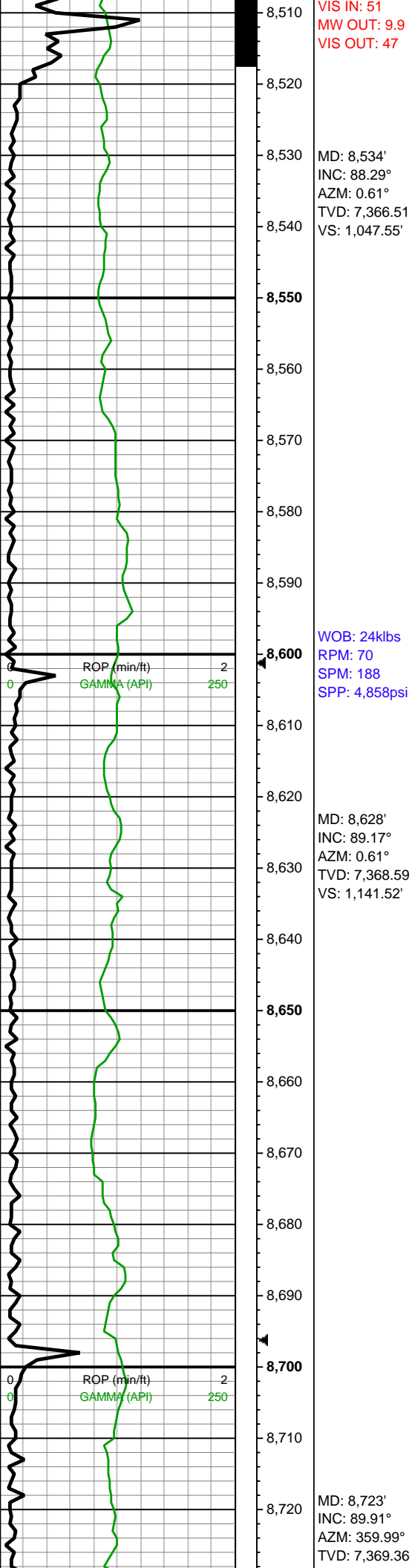








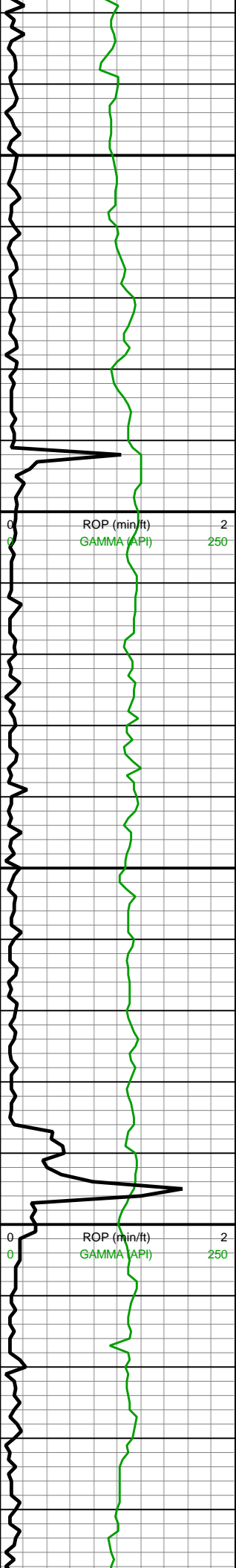




8500-8600: SST (100%)
predy med gy, offwht-lt gy,
predy op grns, vf-f grn, tt
matrix sup, mod-w cons,
frm-sl fri, occ v frm-sl hd

8600-8700: SST (100%)
predy med bnshgy, sme
offwht-lt gy, predy op grns, vf-f
grn, tt matrix sup, mod-w
cons, frm-sl fri, occ v frm-sl
hd





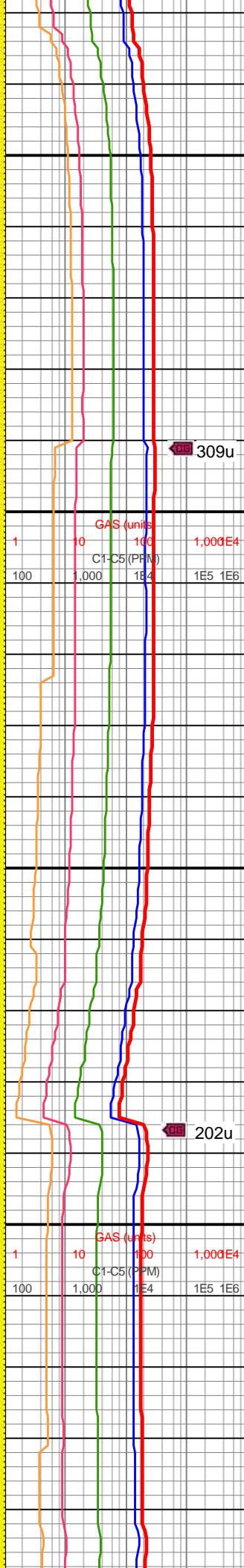
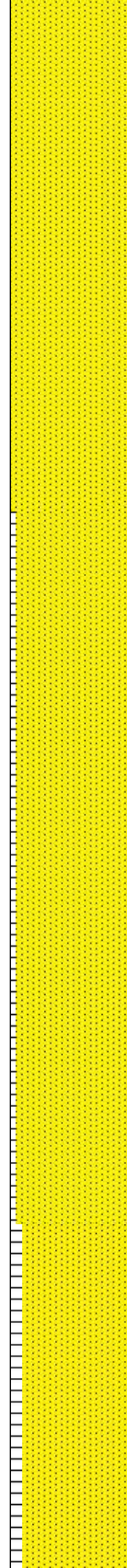
8,730
8,740
8,750
8,760
8,770
8,780
8,790
8,800
8,810
8,820
8,830
8,840
8,850
8,860
8,870
8,880
8,890
8,900
8,910
8,920
8,930
8,940

VS: 1,236.52'

WOB: 19klbs
RPM: 70
SPM: 188
SPP: 4,695psi
MW IN: 9.9
VIS IN: 50
MW OUT: 9.9
VIS OUT: 48

MD: 8,817'
INC: 90.31°
AZM: 0.78°
TVD: 7,369.18
VS: 1,330.52'

MD: 8,912'
INC: 90.22°
AZM: 358.5°
TVD: 7,368.74
VS: 1,425.51'

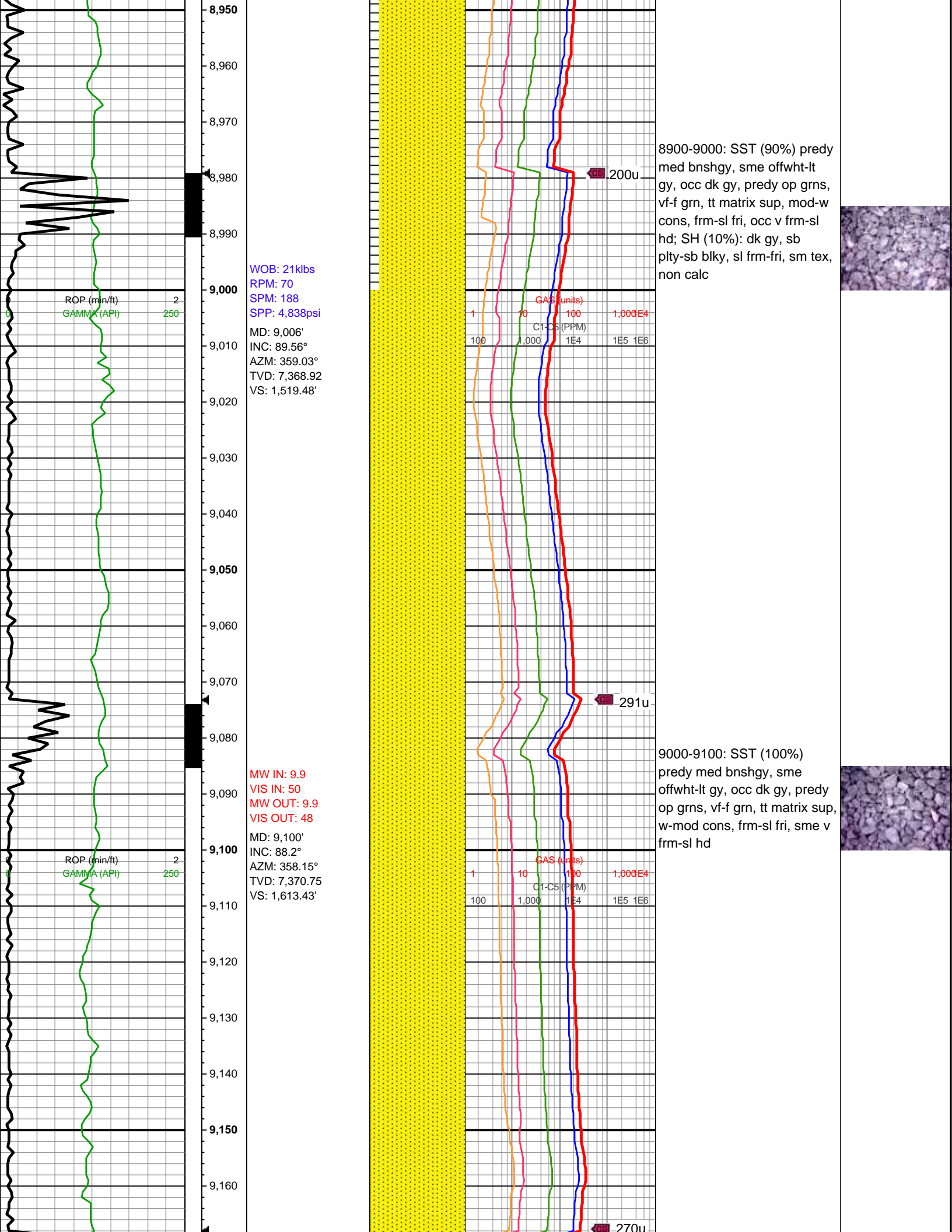


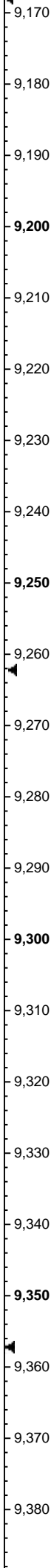
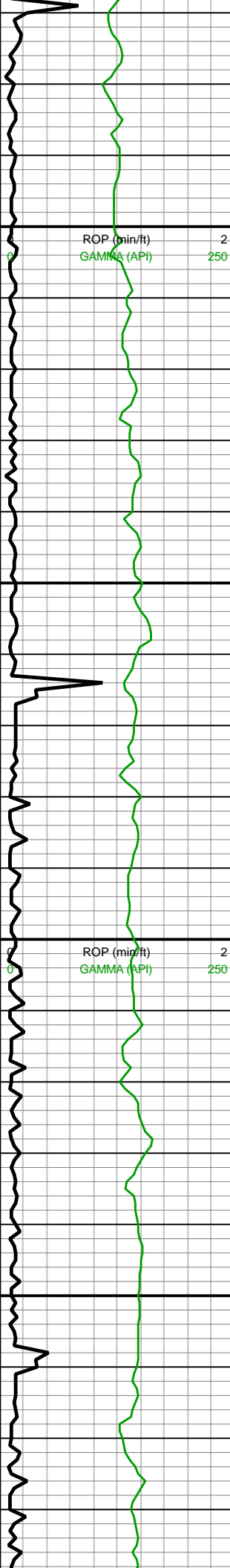
8700-8800: SST (100%)
predy med bnshgy, sme
offwht-lt gy, occ dk gy, predy
op grns, vf-f grn, tt matrix sup,
mod-w cons, frm-sl fri, occ v
frm-sl hd



8800-8900: SST (95%) predy
med bnshgy, sme offwht-lt
gy, occ dk gy, predy op grns,
vf-f grn, tt matrix sup, mod-w
cons, frm-sl fri, occ v frm-sl
hd; SH (5%): dk gy, sb plty-sb
blky, sl frm-fri, sm tex, non
calc





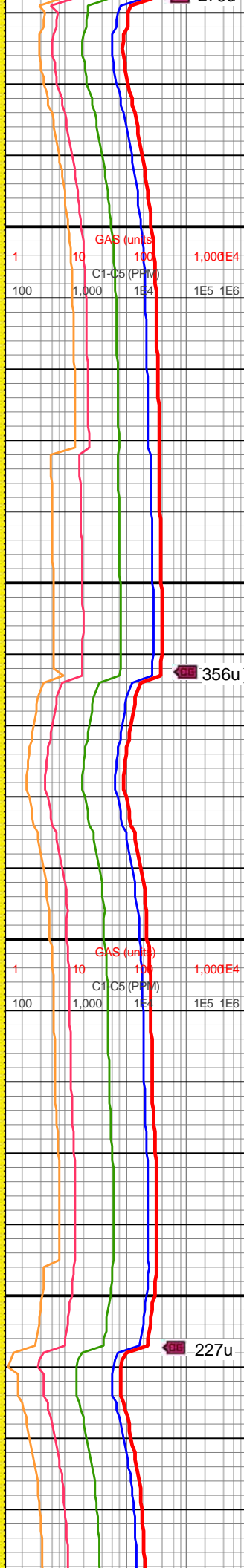
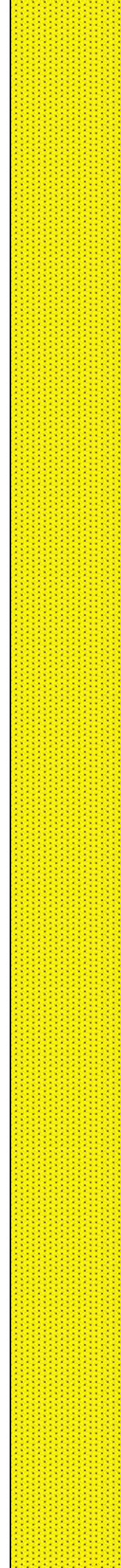


MD: 9,195'
INC: 88.64°
AZM: 358.5°
TVD: 7,373.37'
VS: 1,708.36'

WOB: 23klbs
RPM: 69
SPM: 187
SPP: 4,969psi

MD: 9,289'
INC: 89.17°
AZM: 359.29°
TVD: 7,375.17'
VS: 1,802.32'

MD: 9,384'
INC: 89.39°
AZM: 358.85°
TVD: 7,376.36'

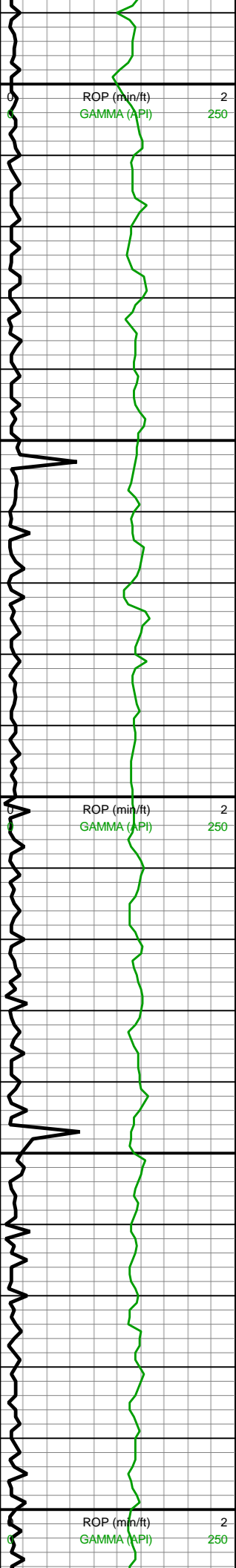


9100-9200: SST (100%)
predy med bnshgy, sme
offwht-lt gy, occ dk gy, predy
op grns, vf-f grn, tt matrix-occ
cl sup, w-mod cons, frm-sl
fri, sme v frm-sl hd

9200-9300: SST (100%)
predy med-lt gy, sme offwht,
occ dk gy, predy op grns, vf-f
grn, tt matrix-occ cl sup,
w-mod cons, frm-sl fri, sme v
frm-sl hd

9300-9400: SST (100%)
predy med-lt gy, sme offwht,
occ dk gy, predy op grns, vf-f



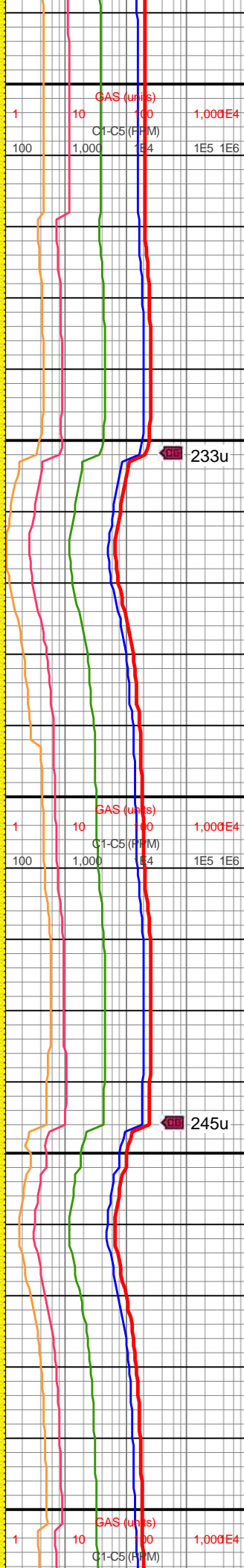
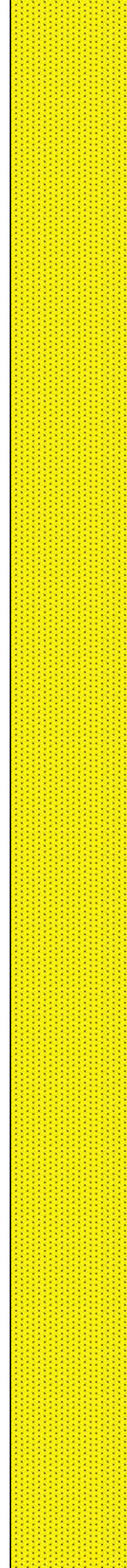


WOB: 23klbs
RPM: 70
SPM: 187
SPP: 5,002psi

MD: 9,478'
INC: 89.87°
AZM: 359.03°
TVD: 7,376.97
VS: 1,991.28'

MW IN: 9.9
VIS IN: 50
MW OUT: 9.9
VIS OUT: 48

WOB: 20.5klbs
RPM: 70
SPM: 188
SPP: 5,040psi

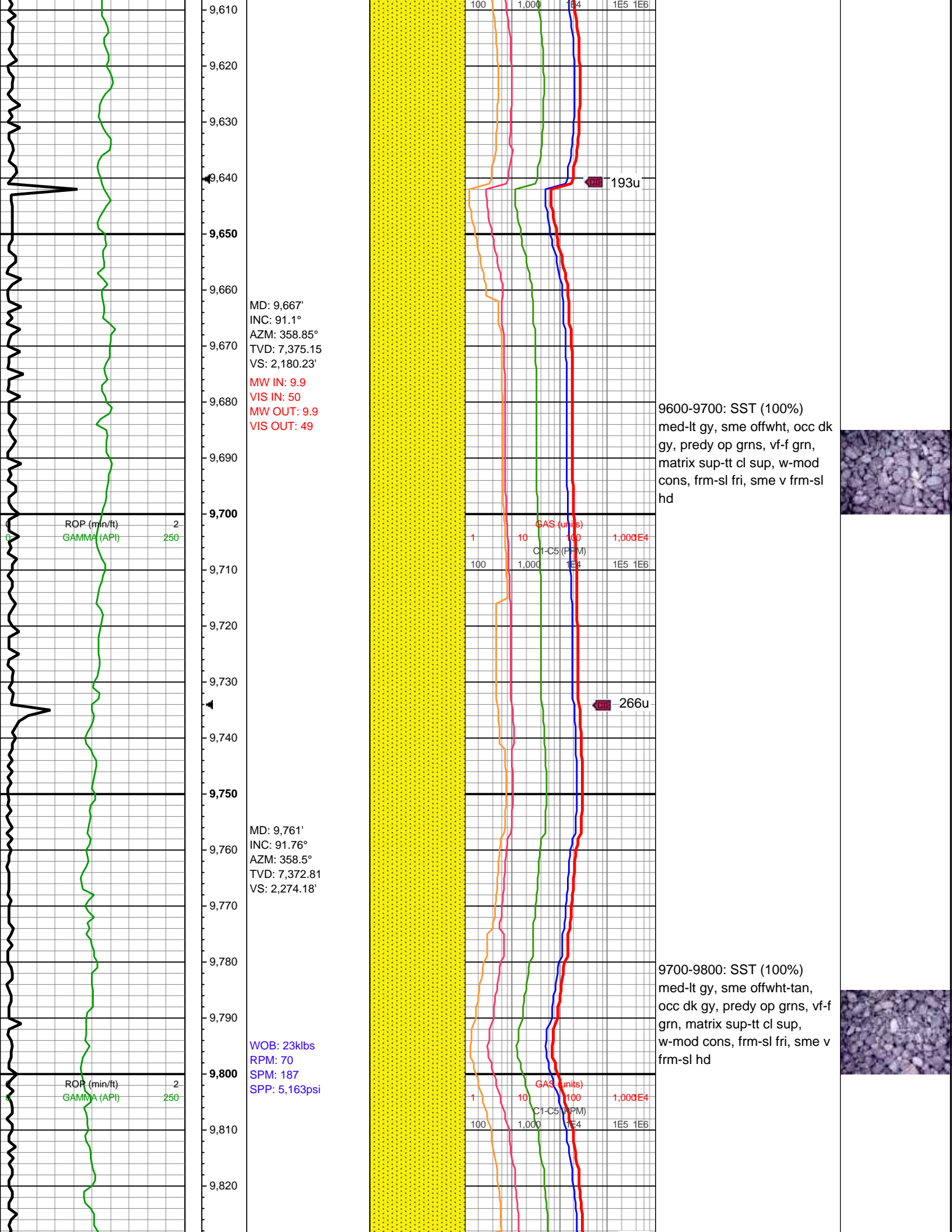


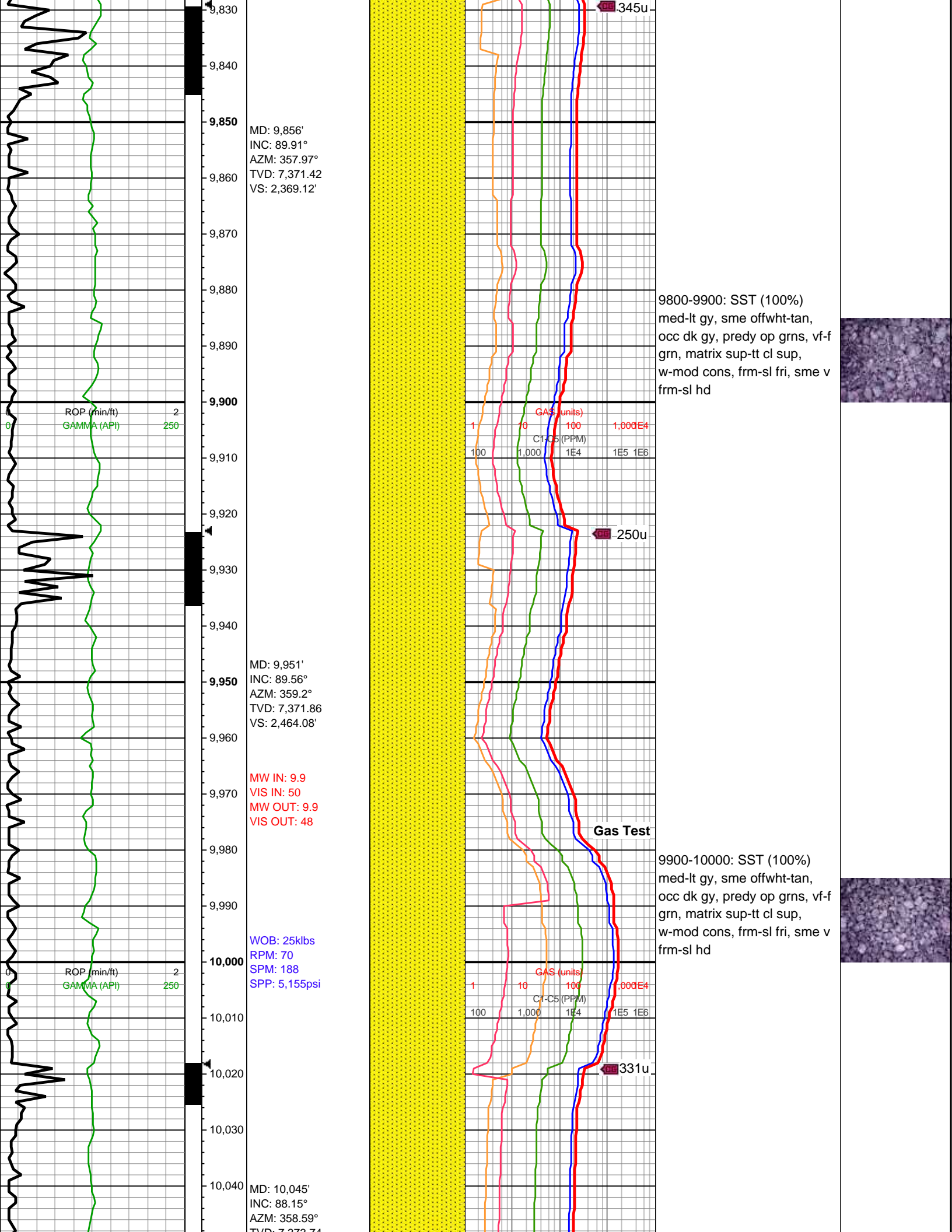
grn, tt cl-sme matrix sup,
w-mod cons, frm-sl fri, sme v
frm-sl hd

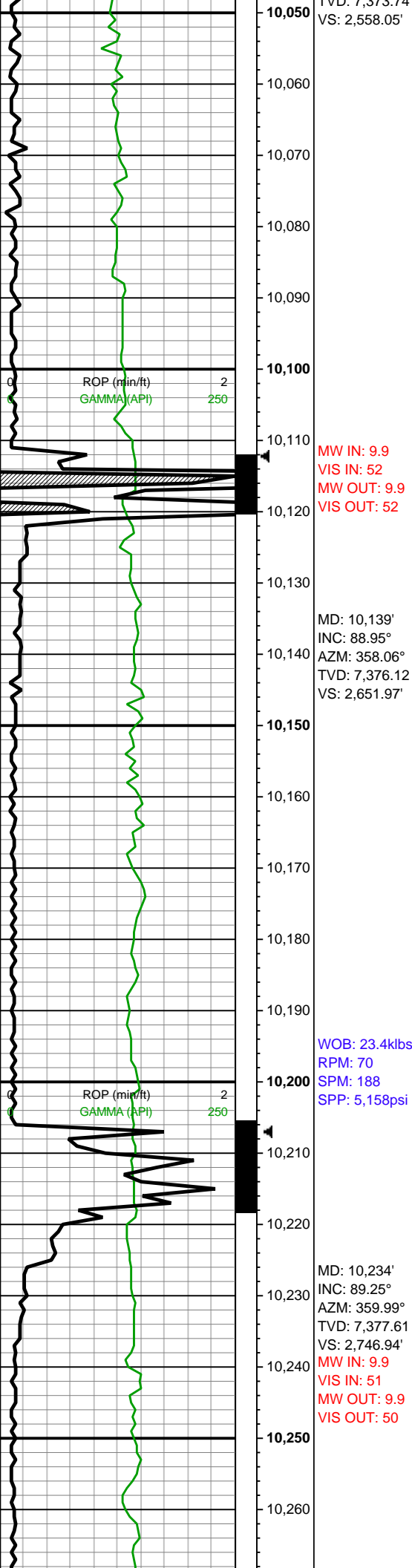
9400-9500: SST (100%)
predy med-lt gy, sme offwht,
occ dk gy, predy op grns, vf-f
grn, matrix sup-tt cl sup,
w-mod cons, frm-sl fri, sme v
frm-sl hd

9500-9600: SST (100%)
predy med-lt gy, sme offwht,
occ dk gy, predy op grns, vf-f
grn, matrix sup-tt cl sup,
w-mod cons, frm-sl fri, sme v
frm-sl hd





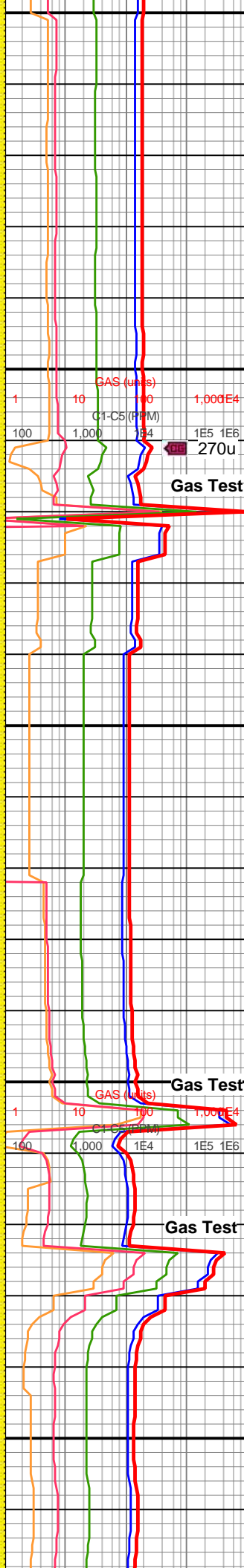
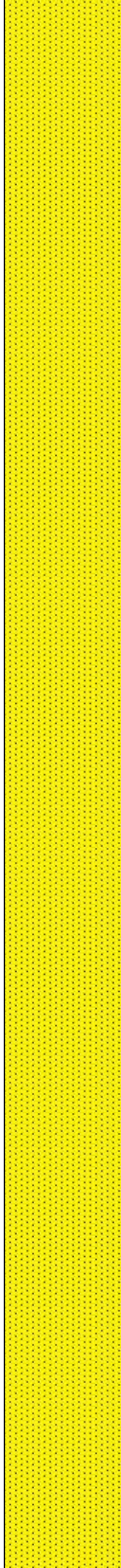




MW IN: 9.9
VIS IN: 52
MW OUT: 9.9
VIS OUT: 52

WOB: 23.4klbs
RPM: 70
SPM: 188
SPP: 5,158psi

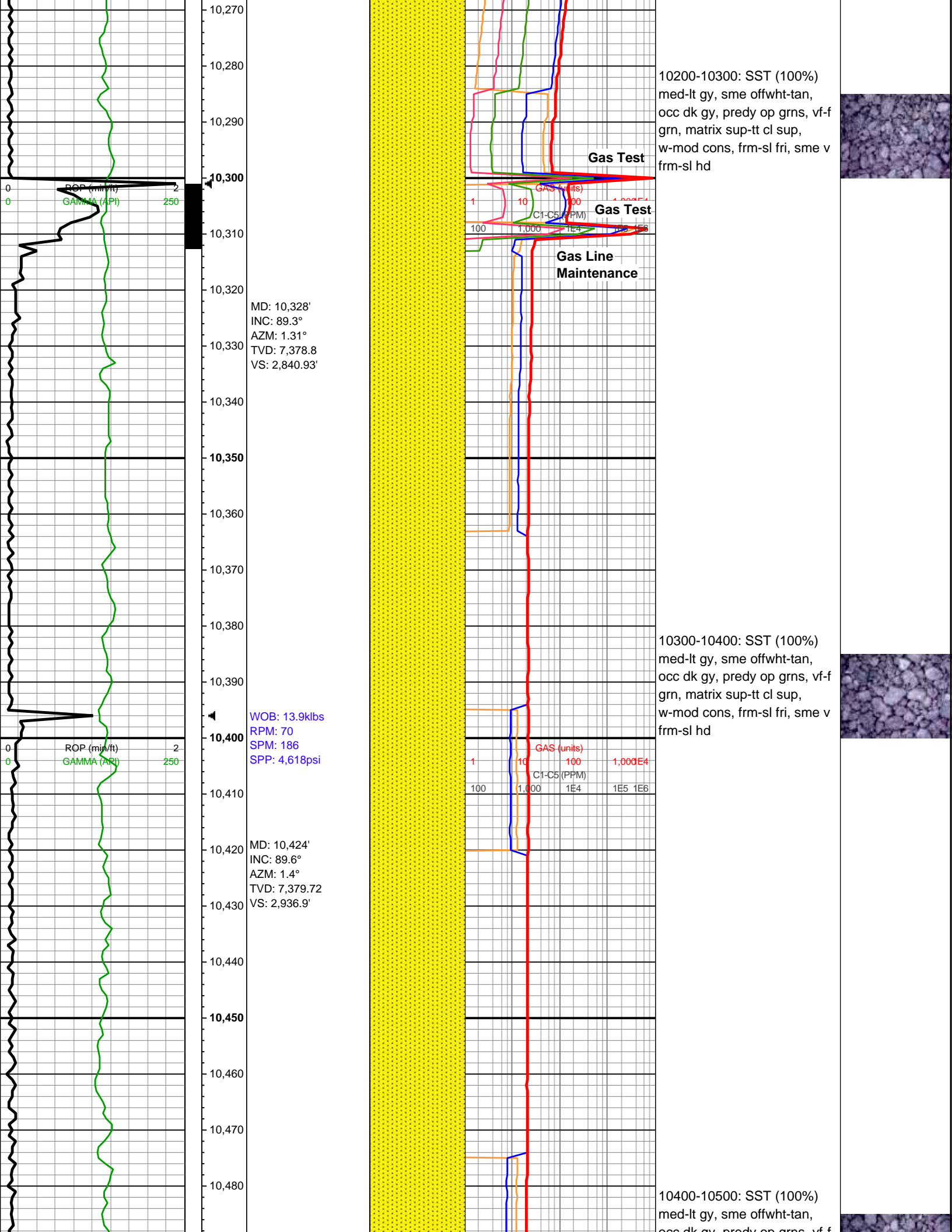
MW IN: 9.9
VIS IN: 51
MW OUT: 9.9
VIS OUT: 50

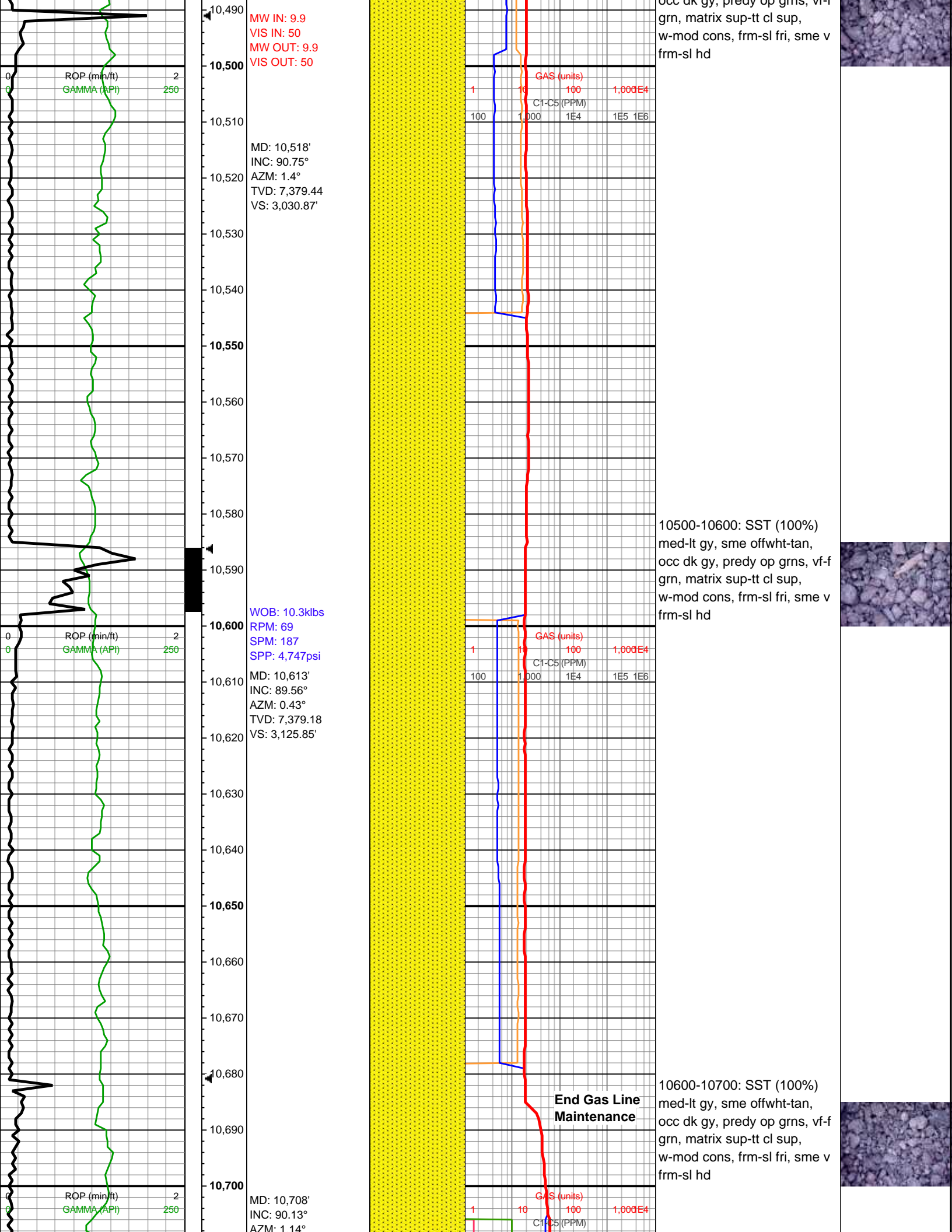


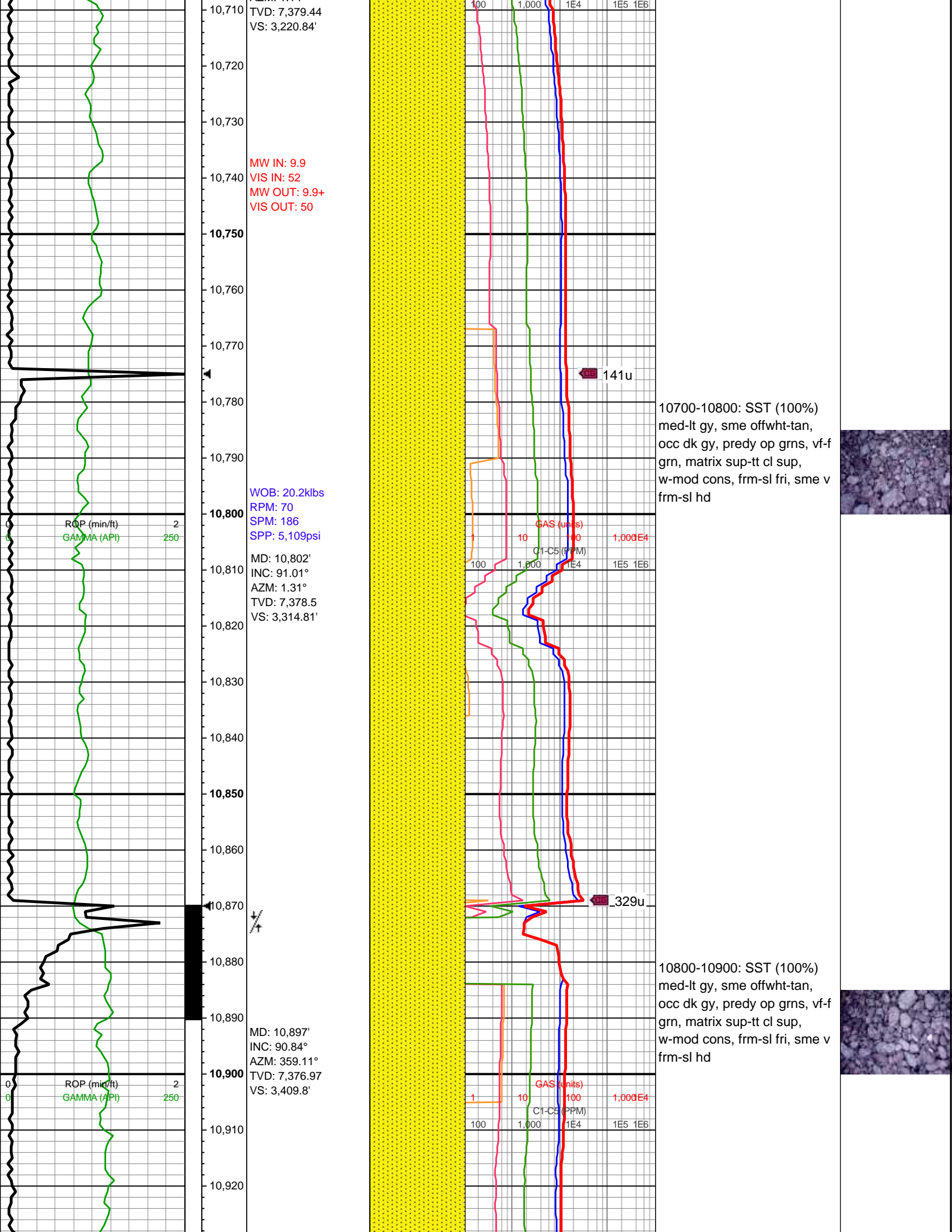
10000-10100: SST (100%)
med-lt gy, sme offwht-tan,
occ dk gy, predy op grns, vf-f
grn, matrix sup-tt cl sup,
w-mod cons, frm-sl fri, sme v
frm-sl hd

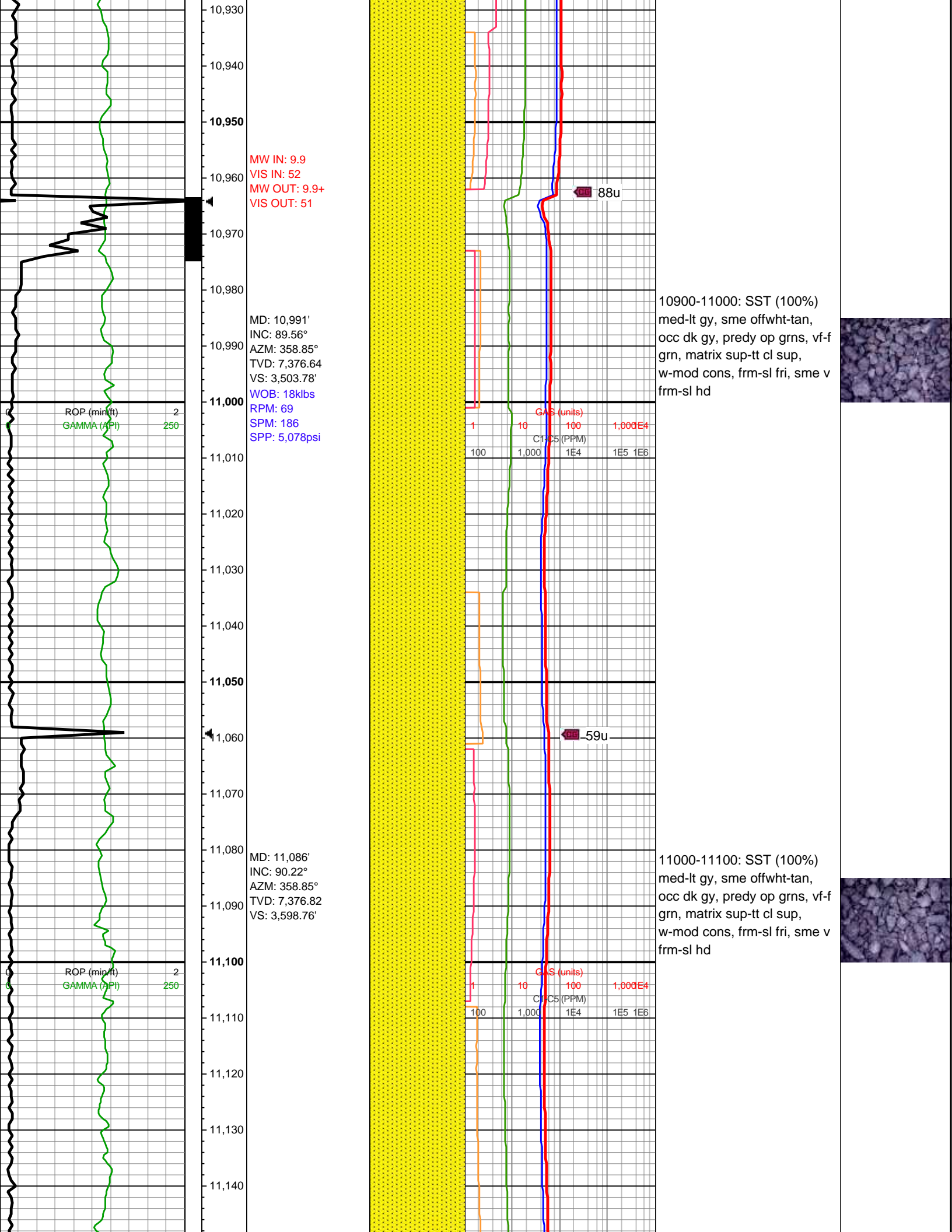
10100-10200: SST (100%)
med-lt gy, sme offwht-tan,
occ dk gy, predy op grns, vf-f
grn, matrix sup-tt cl sup,
w-mod cons, frm-sl fri, sme v
frm-sl hd

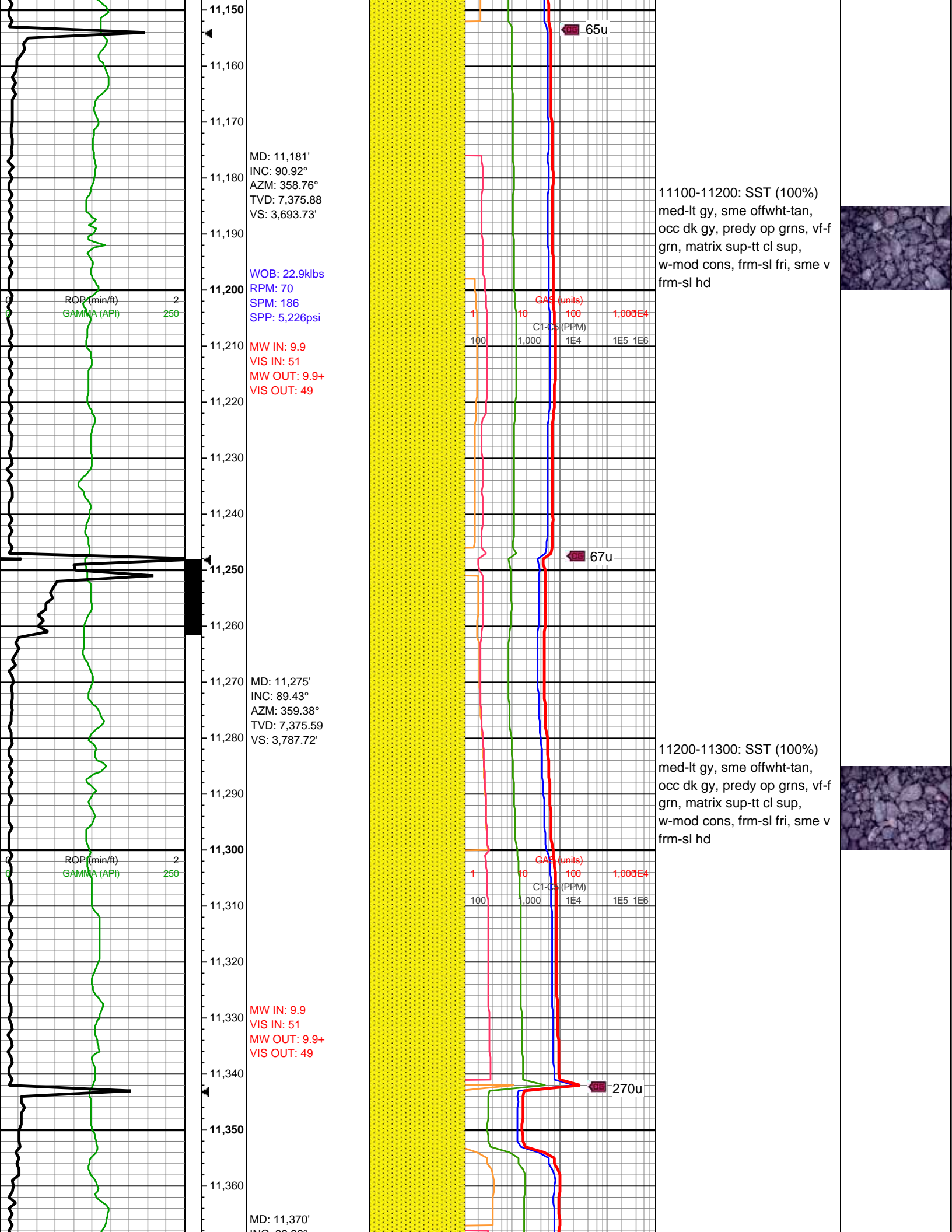


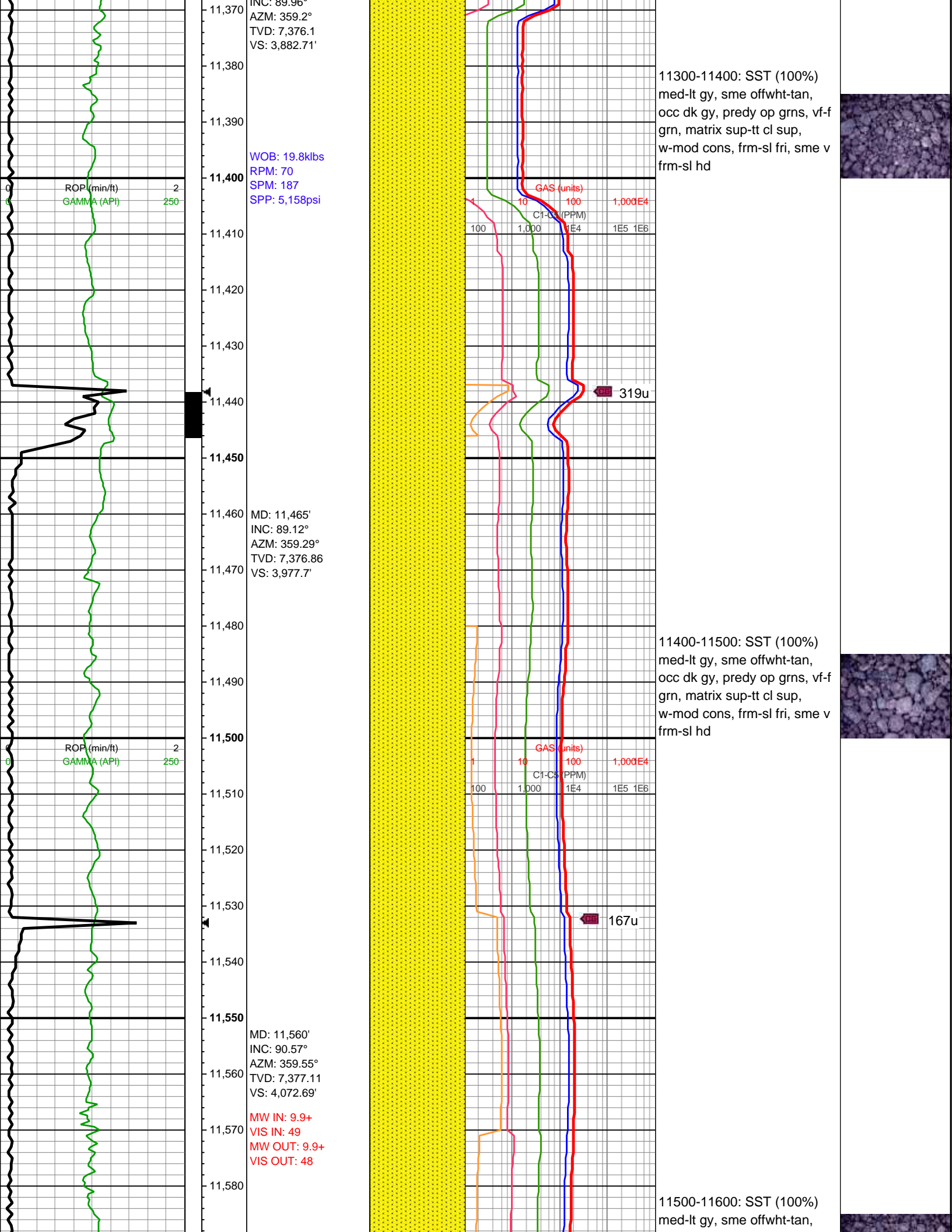


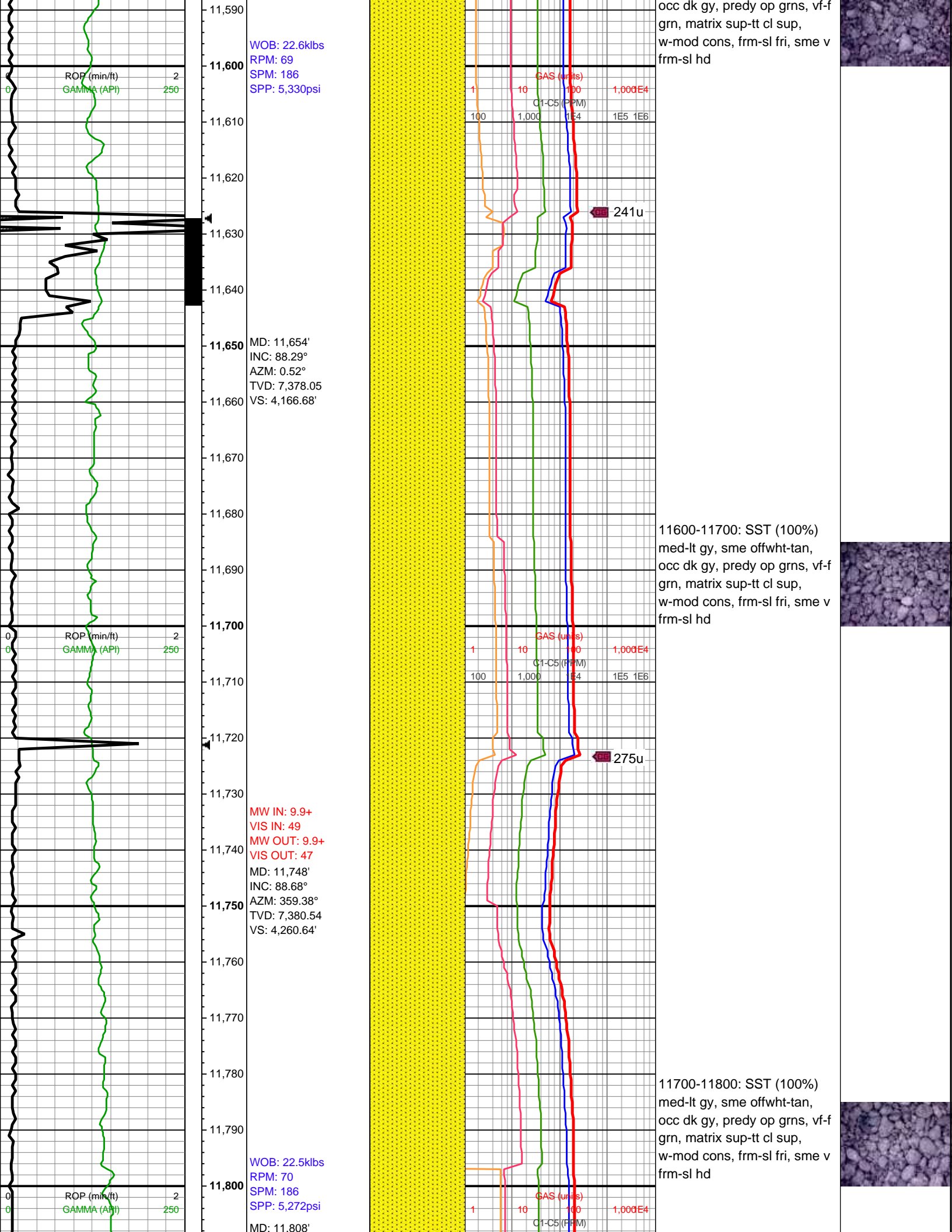


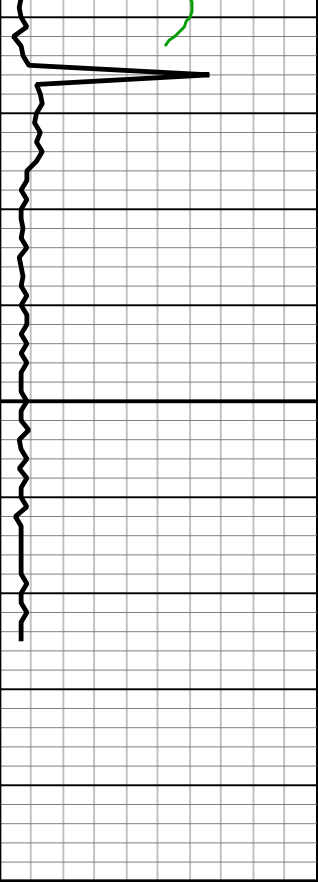












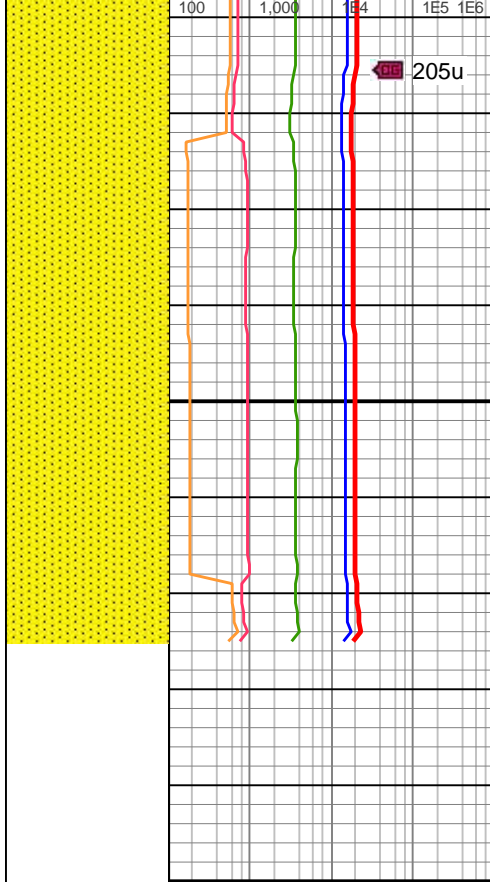
11,810
11,820
11,830
11,840
11,850
11,860
11,870
11,880
11,890
11,900

INC: 89.17°
AZM: 359.47°
TVD: 7,381.66
VS: 4,320.63'

MW IN: 9.9+
VIS IN: 49
MW OUT: 9.9+
VIS OUT: 47

(PTB)
MD: 11,875'
INC: 89.17°
AZM: 359.47°
TVD: 7,382.63
VS: 4,379.46'

**TD of 11,875' MD
Reached at 14:40
on 11/15/2017**



11800-11875: SST (100%)
med-lt gy, sme offwht-tan,
occ dk gy, predy op grns, vf-f
grn, matrix sup-tt cl sup,
w-mod cons, frm-sl fri, sme v
frm-sl hd

