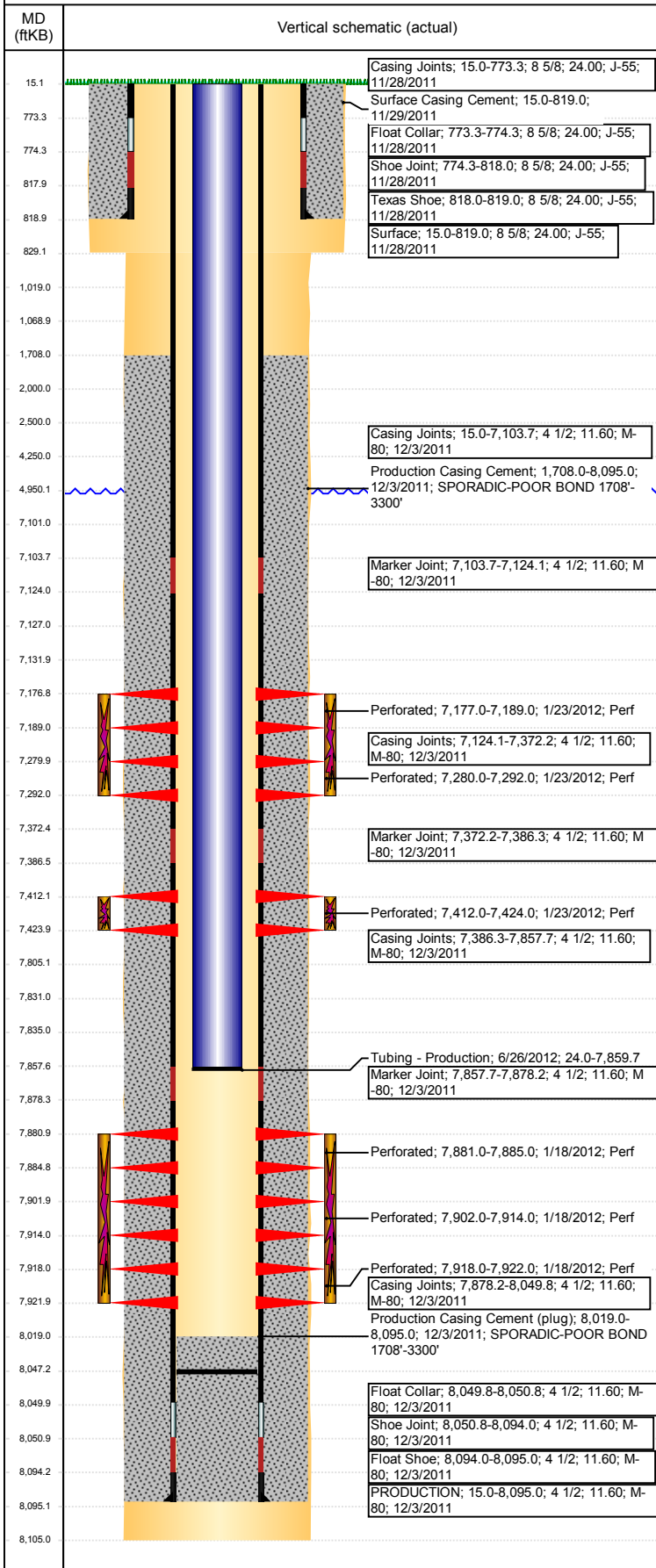


**Well Name: CORBIN D30-23D**

DEVIATED - ORIGINAL HOLE, 1/16/2018 2:00:39 PM



## Well Header

API 05-123-34270	Business Unit DJ BASIN	District 15	Well Config DEVIATED
Original KB Elevation (ft) 4,816	KB - GL / MSL (ftKB) 15.00	Spud Date 11/28/2011	P & A Date

## Comment

1/2 PUMP OFF BIT SUB/CONE BIT @ 8047.33' KB

## Directions To Well

WCR 22 & 49, NORTH 3 MILES, EAST 4/10THS MILE, NORTH INTO

## Congressional Location

Quarter 3 SE	Quarter 4 SW	Section 30	Township 3	Twnshp N/S Dir N	Range 64	Range E/W Dir W
-----------------	-----------------	---------------	---------------	---------------------	-------------	--------------------

## Bottom Hole Location

North-South Distance (ft) 1,050.0	From N or S Line FSL	East-West Distance (ft) 1,250.0	From E or W Line FEL
--------------------------------------	-------------------------	------------------------------------	-------------------------

## Plug Back Total Depths

Date	Depth (ftKB)	Method	Com
12/3/2011	8,049.0	CASING TALLY	FLOAT COLLAR
1/6/2012	8,019.0	CASED HOLE LOG	DEPTH LOGGER
6/26/2012	8,047.3	TBG TALLY	C/O W/N2 & P-S 10' IN 260JT

## Wellbore Sections

Section Des	Size (in)	Act Top, MD (ftKB)	Act Btm, MD (ftKB)
SURFACE	12 1/4	15	829
PRODUCTION	8 7/8	829	8,105

## Zone Statuses

Zone Name	Status Date	Status	Fluid Type	Job	Prod Method
NIOBRARA	4/20/2012	PR		COMPLETION...	
CODELL	4/20/2012	PR		COMPLETION...	
J SAND	4/20/2012	PR		COMPLETION...	

## Casing Strings

### Surface, 819.0ftKB

Casing Description	Run Date	OD (in)	Wt/Len (l...)	Grade	Top, MD (ft...)	MD (ftKB)
Surface	11/28/2011	8 5/8	24.00	J-55	15.0	819.0

### PRODUCTION, 8,095.0ftKB

Casing Description	Run Date	OD (in)	Wt/Len (l...)	Grade	Top, MD (ft...)	MD (ftKB)
PRODUCTION	12/3/2011	4 1/2	11.60	M-80	15.0	8,095.0

## Cement

Description	Top Depth (ftKB)	Bottom Depth (ftKB)
Surface Casing Cement	15.0	819.0
Production Casing Cement	1,708.0	8,095.0
Dump Bail	7,805.0	7,831.0
Dump Bail	7,101.0	7,127.0
Balance Plug	4,250.0	4,950.0
Balance Plug	2,000.0	2,500.0
Balance Plug	1,019.0	1,069.0
Balance Plug	819.0	1,019.0
Balance Plug	15.0	819.0

## Tubing Strings

Tubing Description	Run Date	String...	ID (in)	Wt (lb/ft)	Grade	Len (ft)	Set De...
Tubing - Production	6/26/2012	2 3/8	2.00	4.70	J-55	7,835.71	7,489.7

## Tubing Components

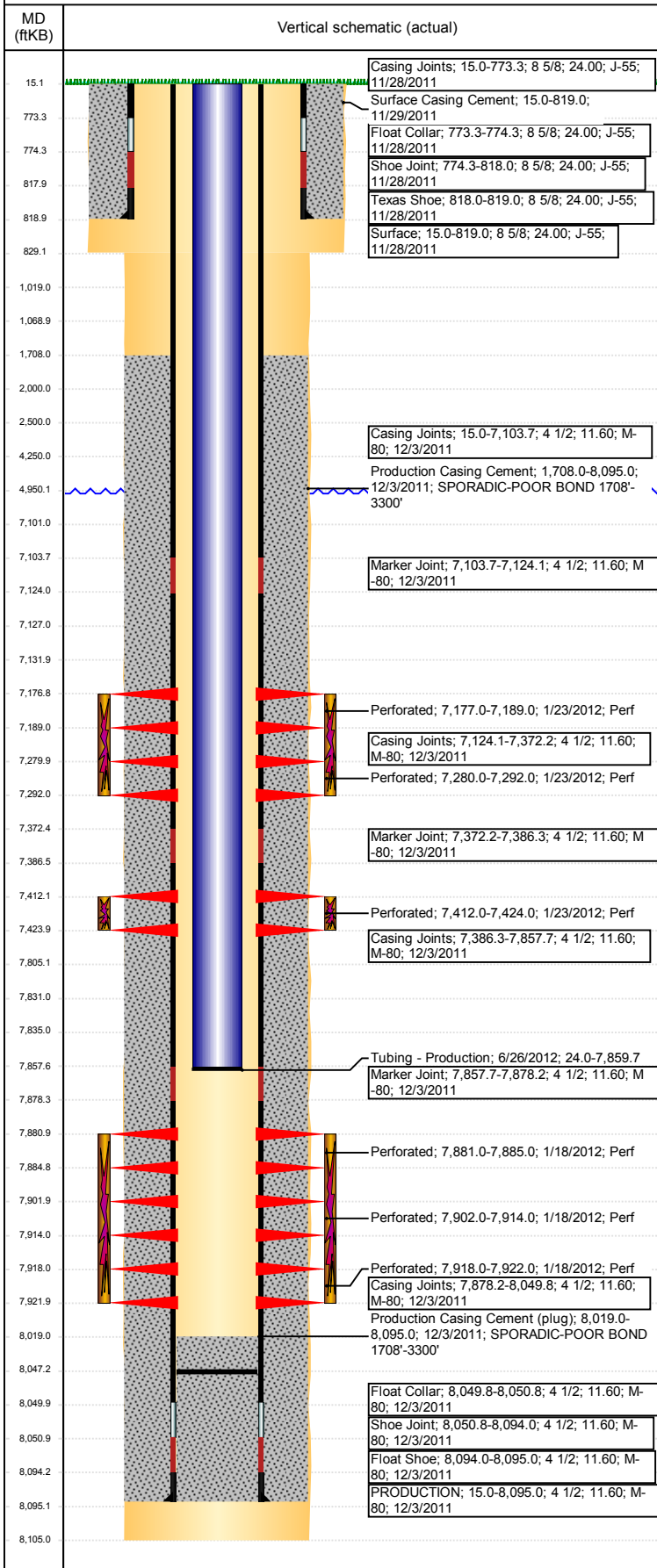
Item Des	OD (in)	Wt (lb/ft)	Grade	Jts	Len (ft)	Btm (ftKB)	Btm (TVD) (ftKB)
Tubing	2 3/8	4.70	J-55	253	7,833.81	7,857.8	
Pump Seating Nipple	2 3/8	1.10	N-80	1	1.10	7,858.9	7,488.9
1/2 PUMP OFF BIT SUB	2 3/8	1.10	N-80	1	0.80	7,859.7	7,489.7

## Other In Hole

Run Date	Des	OD (in)	Top (ftKB)	Btm (ftKB)
1/15/2018	Cast Iron Bridge Plug	4	7,831.0	7,835.0
1/15/2018	Cast Iron Bridge Plug	4	7,127.0	7,132.0

**Well Name: CORBIN D30-23D**

DEVIATED - ORIGINAL HOLE, 1/16/2018 2:00:39 PM



Logs			
Date	Type	Top, MD (ftKB)	Btm, MD (ftKB)
12/2/2011	Caliper/Comp. Density/Neutron/GR/SP/ML	819.0	8,106.0
12/2/2011	DIL/GR/SP/Caliper	819.0	8,106.0
1/6/2012	CBL/CCL/GR	1,170.0	8,019.0
2/22/2017	GYRO	12.0	7,800.0

Perforation Data					
Linked Zone	Brnch/St g	Sum of Entered Shot Total	Top (ftKB)	Btm (ftKB)	Date
NIOBRARA, ORIGINAL HOLE	B	1	7,177.00	7,189.00	1/23/2012
NIOBRARA, ORIGINAL HOLE	C	1	7,280.00	7,292.00	1/23/2012
CODELL, ORIGINAL HOLE		48	7,412.00	7,424.00	1/23/2012
J SAND, ORIGINAL HOLE		16	7,881.00	7,885.00	1/18/2012
J SAND, ORIGINAL HOLE		48	7,902.00	7,914.00	1/18/2012
J SAND, ORIGINAL HOLE		16	7,918.00	7,922.00	1/18/2012

**Total (Sum)** 130

## Stimulation Intervals

Start Date 1/23/2012	Primary Job Type COMPLETION - ORIGINAL
-------------------------	---

Technical Result Success	Tech Result Details According to Plan	Tech Result Note
-----------------------------	--	------------------

Comment (JSAND): BREAK 2610 @ 4.9BPM, ISIP - 1840, 5MIN - 1338, 10MIN - 1032, 15MIN - 794. REVERSE STEP - 25 PERFS OPEN, NWB-325, PERF FRIC-294. FINAL ISIP - 2805, 5 MIN - 2600. AVG VISC - 22, AVG PH - 10.16, AVG TEMP - 66.4. TREATMENT WENT WELL.

Start Date 1/23/2012	Primary Job Type COMPLETION - ORIGINAL
-------------------------	---

Technical Result Success	Tech Result Details According to Plan	Tech Result Note
-----------------------------	--	------------------

Comment (CODELL): BREAK @ 3328 @ 5BPM, ISIP - 3358, 5 MIN-2554. REVERSE STEP - 19 PERFS OPEN, NWB - 235 PSI, PERF FRIC - 128 PSI. INCREASED RATE BECAUSE OF INCREASING PRESSURE TREND DURING MIDDLE 4 PSA. PRESSURE TREND WENT FLAT BRIEFLY, ONCE IT BEGAN TO INCREASE AGAIN CUT SAND 3,500 LBS SHORT AND LEFT ACID OUT OF WELL. FINAL ISIP - 3837, 5 MIN - 3500. AVG VISC - 29, AVG TEMP - 66.9, AVG PH - 10.1. TREATMENT WENT WELL.

Start Date 1/23/2012	Primary Job Type COMPLETION - ORIGINAL
-------------------------	---

Technical Result Success	Tech Result Details According to Plan	Tech Result Note
-----------------------------	--	------------------

Comment (NIOBRARA C&B): BREAK @ 4513 @ 2.1BPM, ISIP-3618, SPOTTED ACID WAITED 45 MIN FOR BALL TO DROP. SAW BALL SEAT AND PROCEEDED TO GET BREAK ON FORMATION. FINAL ISIP - 3642, 5 MIN -3500. AVG VISC - 25, AVG PH - 10.13, AVG TEMP - 65.1. TREATMENT WENT WELL.