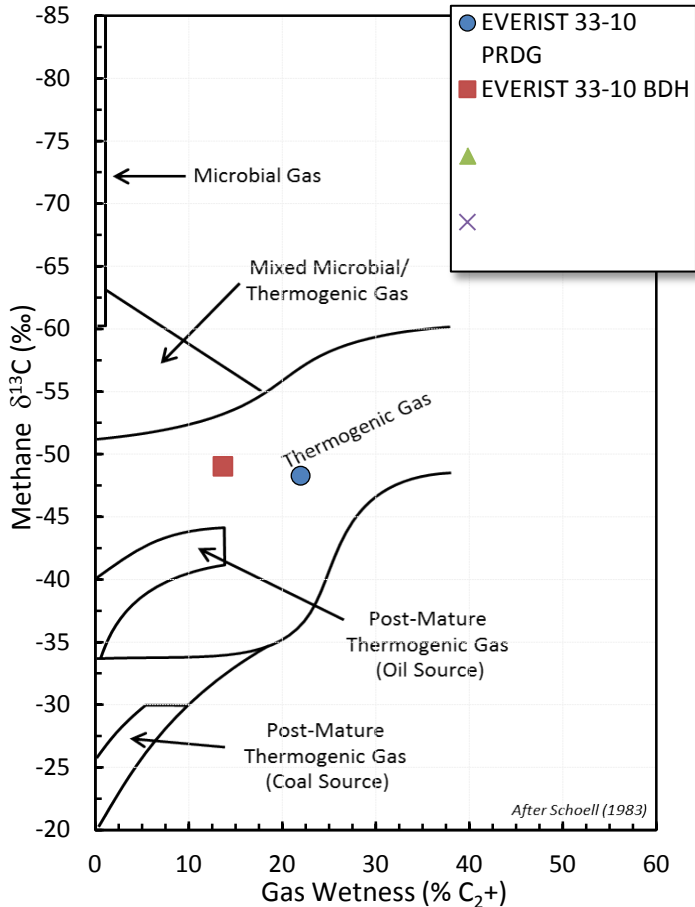
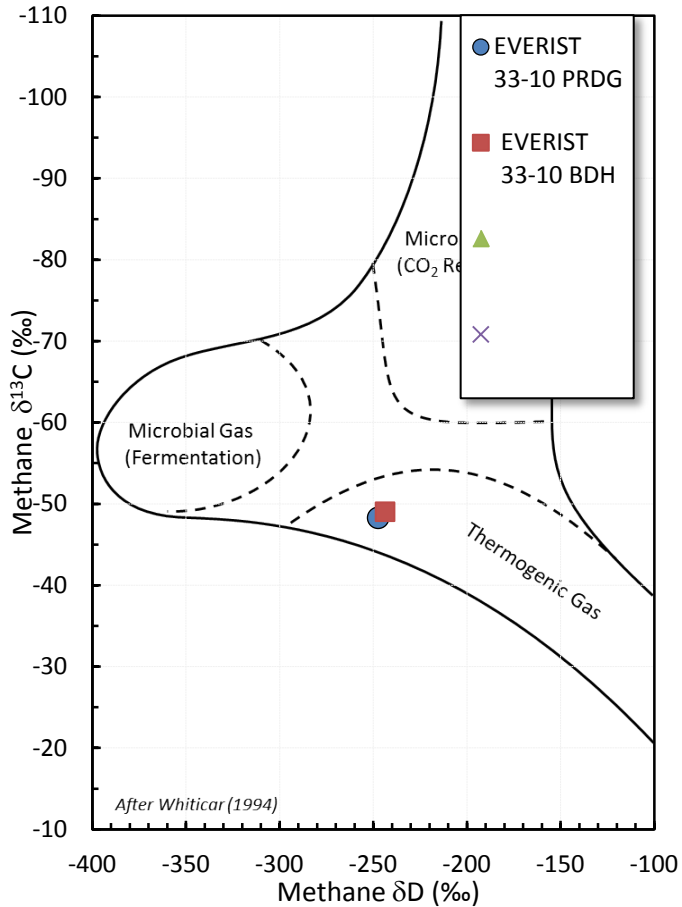


# Stable Isotope Interpretive Plots

## Methane vs Gas Wetness Genetic Classification



## Methane $\delta^{13}\text{C}$ vs $\delta\text{D}$ Genetic Classification Plot



## Methane $\delta^{13}\text{C}$ vs $\text{C}_1/(\text{C}_2+\text{C}_3)$ Genetic Classification Plot

