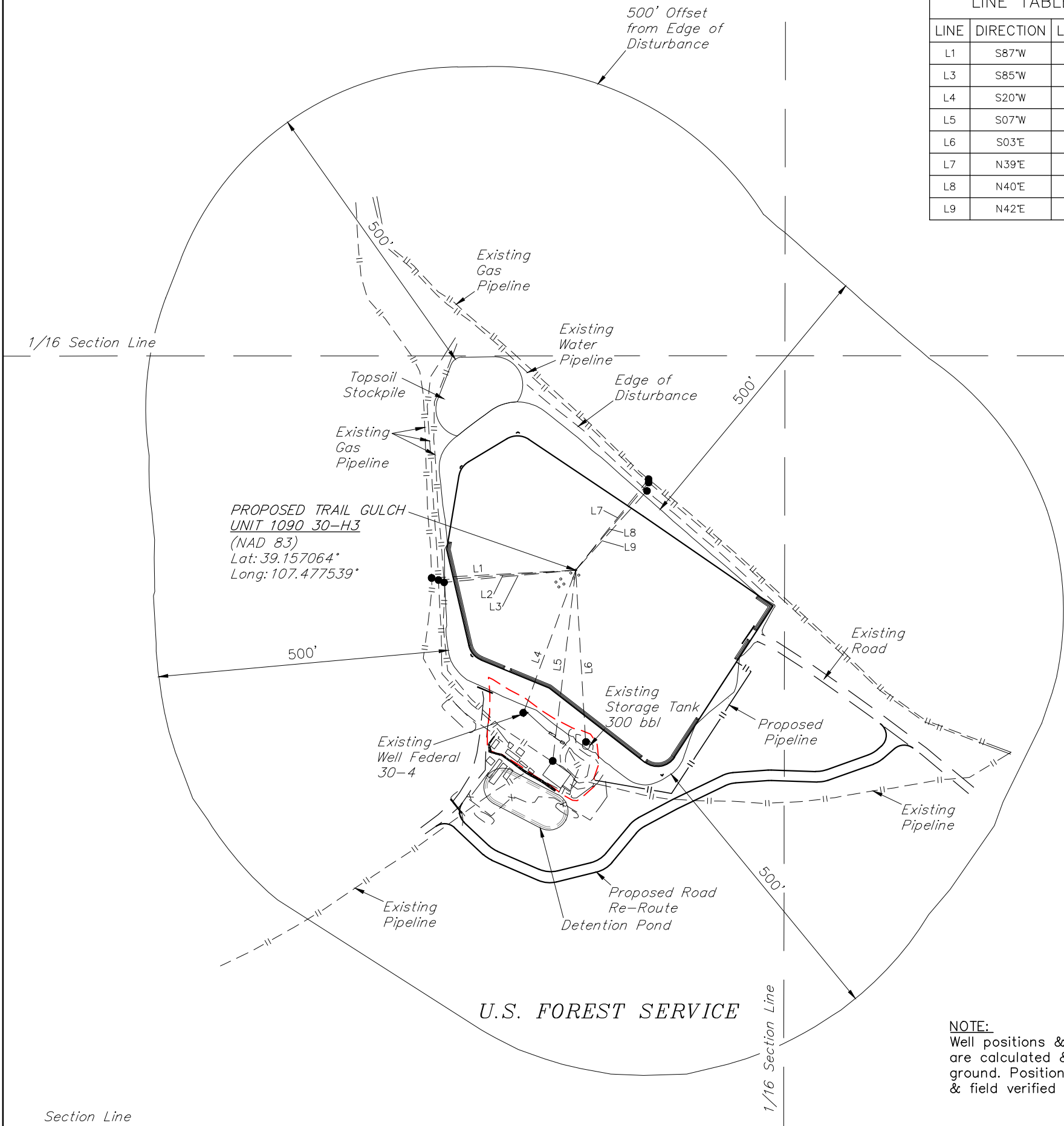
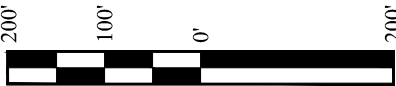


Sec. 30

LINE TABLE		
LINE	DIRECTION	LENGTH
L1	S87°W	249'
L3	S85°W	228'
L4	S20°W	262'
L5	S07°W	331'
L6	S03°E	296'
L7	N39°E	201'
L8	N40°E	197'
L9	N42°E	184'



NOTE:
Well positions & pad corners
are calculated & not set on
ground. Position to be staked
& field verified at a later date.



REV: 3 12-07-17 M.D. (PAD & SHL CHANGE)

PLANT COMMUNITY
<input type="checkbox"/> DISTURBED GRASSLAND
<input type="checkbox"/> NATIVE GRASSLAND
<input type="checkbox"/> SHRUB LAND
<input type="checkbox"/> PLAINS RIPARIAN
<input type="checkbox"/> MOUNTAIN RIPARIAN
<input type="checkbox"/> FOREST LAND
<input type="checkbox"/> WETLANDS AQUATIC
<input type="checkbox"/> ALPINE
<input type="checkbox"/> OTHER (Describe):

CURRENT LAND USE
CROP LAND: <input type="checkbox"/> IRRIGATED <input type="checkbox"/> DRY LAND <input type="checkbox"/> IMPROVED PASTURE <input type="checkbox"/> HAY MEADOW <input type="checkbox"/> CRP
NON-CROP LAND: <input type="checkbox"/> RANGELAND <input type="checkbox"/> TIMBER <input type="checkbox"/> RECREATIONAL <input type="checkbox"/> OTHER (Describe)
SUBDIVIDED: <input type="checkbox"/> INDUSTRIAL <input type="checkbox"/> COMMERCIAL <input type="checkbox"/> RESIDENTIAL

FUTURE LAND USE
CROP LAND: <input type="checkbox"/> IRRIGATED <input type="checkbox"/> DRY LAND <input type="checkbox"/> IMPROVED PASTURE <input type="checkbox"/> HAY MEADOW <input type="checkbox"/> CRP
NON-CROP LAND: <input type="checkbox"/> RANGELAND <input type="checkbox"/> TIMBER <input type="checkbox"/> RECREATIONAL <input type="checkbox"/> OTHER (Describe)
SUBDIVIDED: <input type="checkbox"/> INDUSTRIAL <input type="checkbox"/> COMMERCIAL <input type="checkbox"/> RESIDENTIAL

Gunnison Energy LLC

TRAIL GULCH UNIT 1090 30-H1 PAD
SW 1/4 SE 1/4, SECTION 30, T10S, R90W, 6th P.M.
GUNNISON COUNTY, COLORADO



UELS, LLC
Corporate Office * 85 South 200 East
Vernal, UT 84078 * (435) 789-1017

SURVEYED BY	MARTIN PIERCE	11-03-16	SCALE
DRAWN BY	C.D.L.	03-29-17	1" = 200'
LOCATION DRAWING		FIGURE #6	

Gunnison Energy LLC

TRAIL GULCH UNIT 1090 30-H1 PAD

SECTION 30, T10S, R90W, 6th P.M.

GUNNISON COUNTY, COLORADO

DATE: 03-29-17

REV: 2 12-07-17 M.D. (SHL MOVE)

DISTANCES FROM WELLHEAD

WELL NAME	BUILDING		BUILDING UNIT		HIGH OCCU. BUILDING		D.O.A.A.		PUBLIC ROAD		ABOVE GROUND UTILITY		RAILROAD		PROPERTY LINE	
	DIRECTION	LENGTH	DIRECTION	LENGTH	DIRECTION	LENGTH	DIRECTION	LENGTH	DIRECTION	LENGTH	DIRECTION	LENGTH	DIRECTION	LENGTH	DIRECTION	LENGTH
TRAIL GULCH UNIT 1090 30-H1	OVER 1 MILE		OVER 1 MILE		OVER 1 MILE		OVER 1 MILE		OVER 1 MILE		OVER 1 MILE		OVER 1 MILE		SOUTH	946'
TRAIL GULCH UNIT 1090 30-H2	OVER 1 MILE		OVER 1 MILE		OVER 1 MILE		OVER 1 MILE		OVER 1 MILE		OVER 1 MILE		OVER 1 MILE		SOUTH	957'
TRAIL GULCH UNIT 1090 30-H3	OVER 1 MILE		OVER 1 MILE		OVER 1 MILE		OVER 1 MILE		OVER 1 MILE		OVER 1 MILE		OVER 1 MILE		SOUTH	962'

DISTANCES FROM PRODUCTION AREA

PRODUCTION FEATURE	BUILDING		BUILDING UNIT		HIGH OCCU. BUILDING		D.O.A.A.		PUBLIC ROAD		ABOVE GROUND UTILITY		RAILROAD		PROPERTY LINE (SEPARATOR)	
	DIRECTION	LENGTH	DIRECTION	LENGTH	DIRECTION	LENGTH	DIRECTION	LENGTH	DIRECTION	LENGTH	DIRECTION	LENGTH	DIRECTION	LENGTH	DIRECTION	LENGTH
PRODUCTION AREA	OVER 1 MILE		OVER 1 MILE		OVER 1 MILE		OVER 1 MILE		OVER 1 MILE		OVER 1 MILE		OVER 1 MILE		SOUTH	971'