

FINISHED GRADE ELEVATION = 8109.3'

REV: 5 12-07-17 M.D. (PAD & SHL CHANGE)

- NOTES:**
- Flare Stack is to be located a min. of 100' from the wellhead.
 - Round corners at 35' radius or as needed.
 - Contours shown at 2' intervals.
 - Cut/Fill slopes 1 1/2:1 (Typ.).
 - Production Facility to be Removed and Relocated.

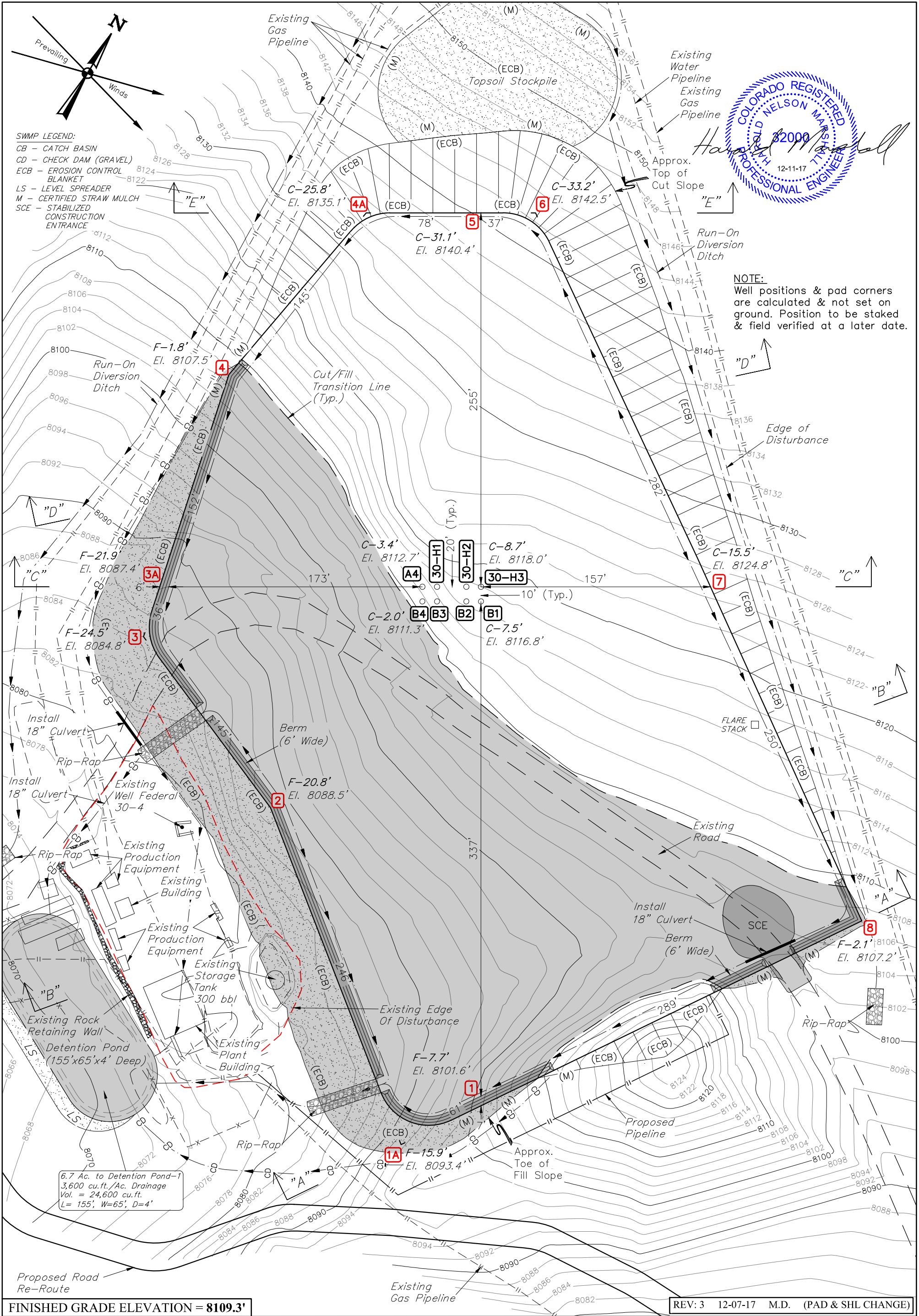


UELS, LLC
Corporate Office * 85 South 200 East
Vernal, UT 84078 * (435) 789-1017

Gunnison Energy LLC

TRAIL GULCH UNIT 1090 30-H1 PAD
SW 1/4 SE 1/4, SECTION 30, T10S, R90W, 6th P.M.
GUNNISON COUNTY, COLORADO

SURVEYED BY	MARTIN PIERCE	11-03-16	SCALE
DRAWN BY	C.D.L.	03-29-17	1" = 60'
CONSTRUCTION LAYOUT		FIGURE #1	



FINISHED GRADE ELEVATION = 8109.3'

REV: 3 12-07-17 M.D. (PAD & SHL CHANGE)

- NOTES:**
- Flare Stack is to be located a min. of 100' from the wellhead.
 - Round corners at 35' radius or as needed.
 - Contours shown at 2' intervals.
 - Cut/Fill slopes 1 1/2:1 (Typ.).
 - Production Facility to be Removed and Relocated.



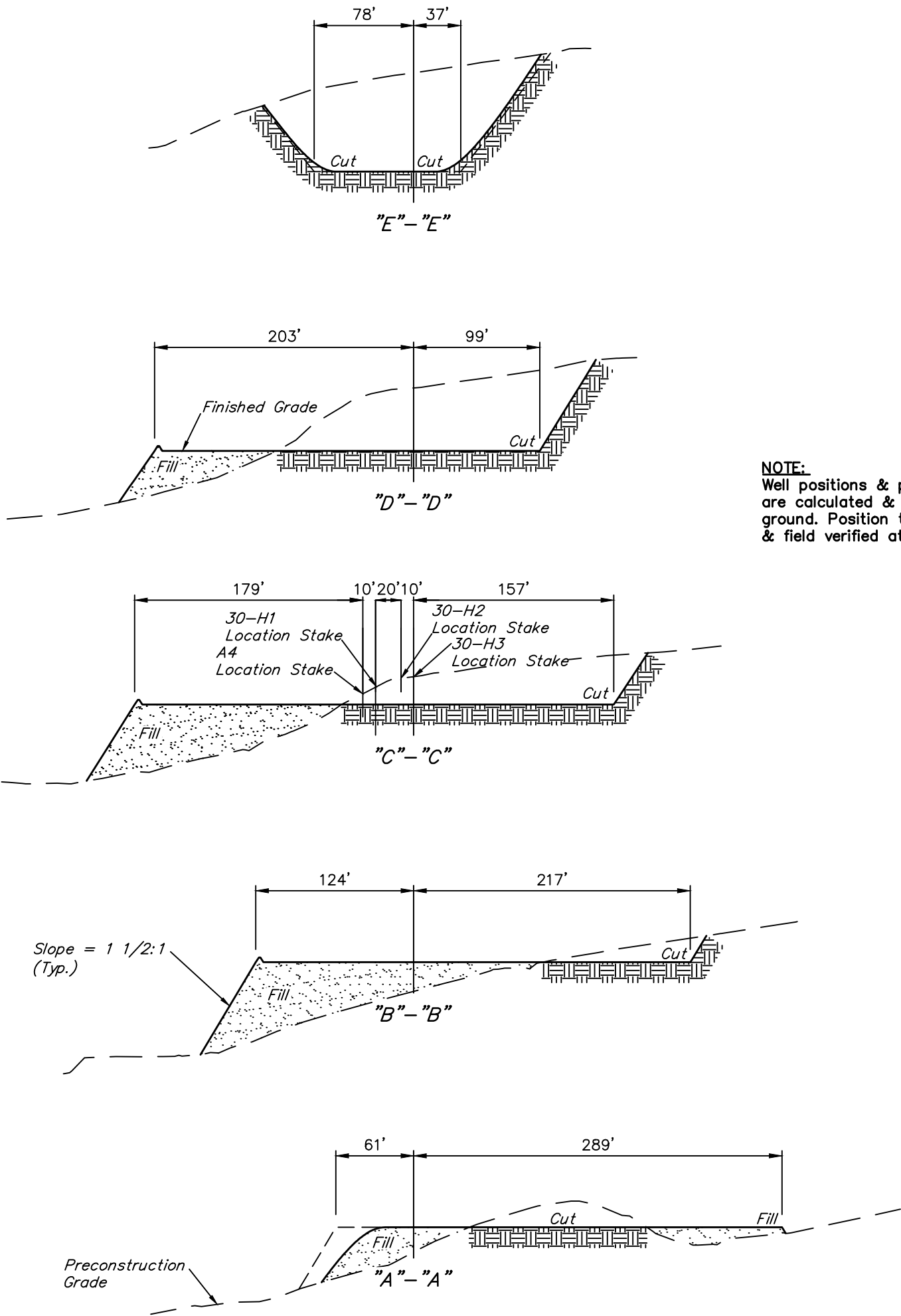
UELS, LLC
Corporate Office * 85 South 200 East
Vernal, UT 84078 * (435) 789-1017

Gunnison Energy LLC

TRAIL GULCH UNIT 1090 30-H1 PAD
SW 1/4 SE 1/4, SECTION 30, T10S, R90W, 6th P.M.
GUNNISON COUNTY, COLORADO

SURVEYED BY	MARTIN PIERCE	11-03-16	SCALE
DRAWN BY	C.D.L.	03-29-17	1" = 60'
CONSTRUCTION LAYOUT		FIGURE #2	

1" = 40'
X-Section
Scale
1" = 100'



NOTE:
Well positions & pad corners
are calculated & not set on
ground. Position to be staked
& field verified at a later date.

APPROXIMATE EARTHWORK QUANTITIES	
(6") TOPSOIL STRIPPING	4,360 Cu. Yds.
REMAINING LOCATION	51,700 Cu. Yds.
TOTAL CUT	56,060 Cu. Yds.
FILL	51,700 Cu. Yds.
EXCESS MATERIAL	4,360 Cu. Yds.
TOPSOIL	4,360 Cu. Yds.
EXCESS UNBALANCE (After Interim Rehabilitation)	0 Cu. Yds.

APPROXIMATE SURFACE DISTURBANCE AREAS		
	DISTANCE	ACRES
WELL SITE DISTURBANCE	NA	±5.655
30' WIDE ROAD RE-ROUTE R-O-W DISTURBANCE	±883'	±0.608
30' WIDE PIPELINE R-O-W DISTURBANCE	±414'	±0.285
TOTAL SURFACE USE AREA		±6.548

REV: 5 12-07-17 M.D. (PAD & SHL CHANGE)

- NOTES:**
- Fill quantity includes 5% for compaction.
 - Calculations based on 6" of topsoil stripping.
 - Cut/Fill slopes 1 1/2:1 (Typ.).

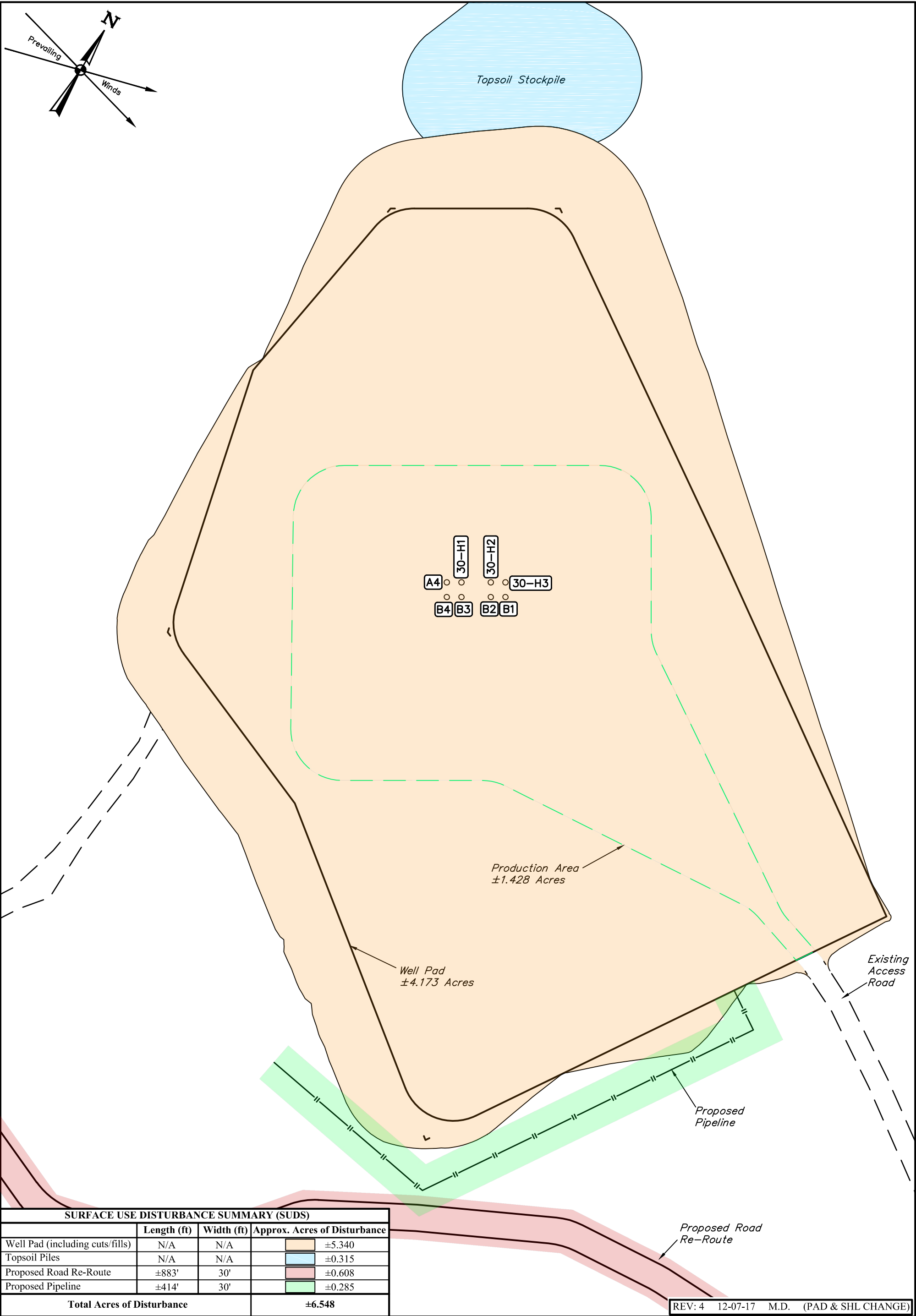
Gunnison Energy LLC

TRAIL GULCH UNIT 1090 30-H1 PAD
SW 1/4 SE 1/4, SECTION 30, T10S, R90W, 6th P.M.
GUNNISON COUNTY, COLORADO

SURVEYED BY	MARTIN PIERCE	11-03-16	SCALE
DRAWN BY	C.D.L.	03-29-17	AS SHOWN
CONSTRUCTION LAYOUT CROSS SECTIONS			FIGURE #3



UELS, LLC
Corporate Office * 85 South 200 East
Vernal, UT 84078 * (435) 789-1017



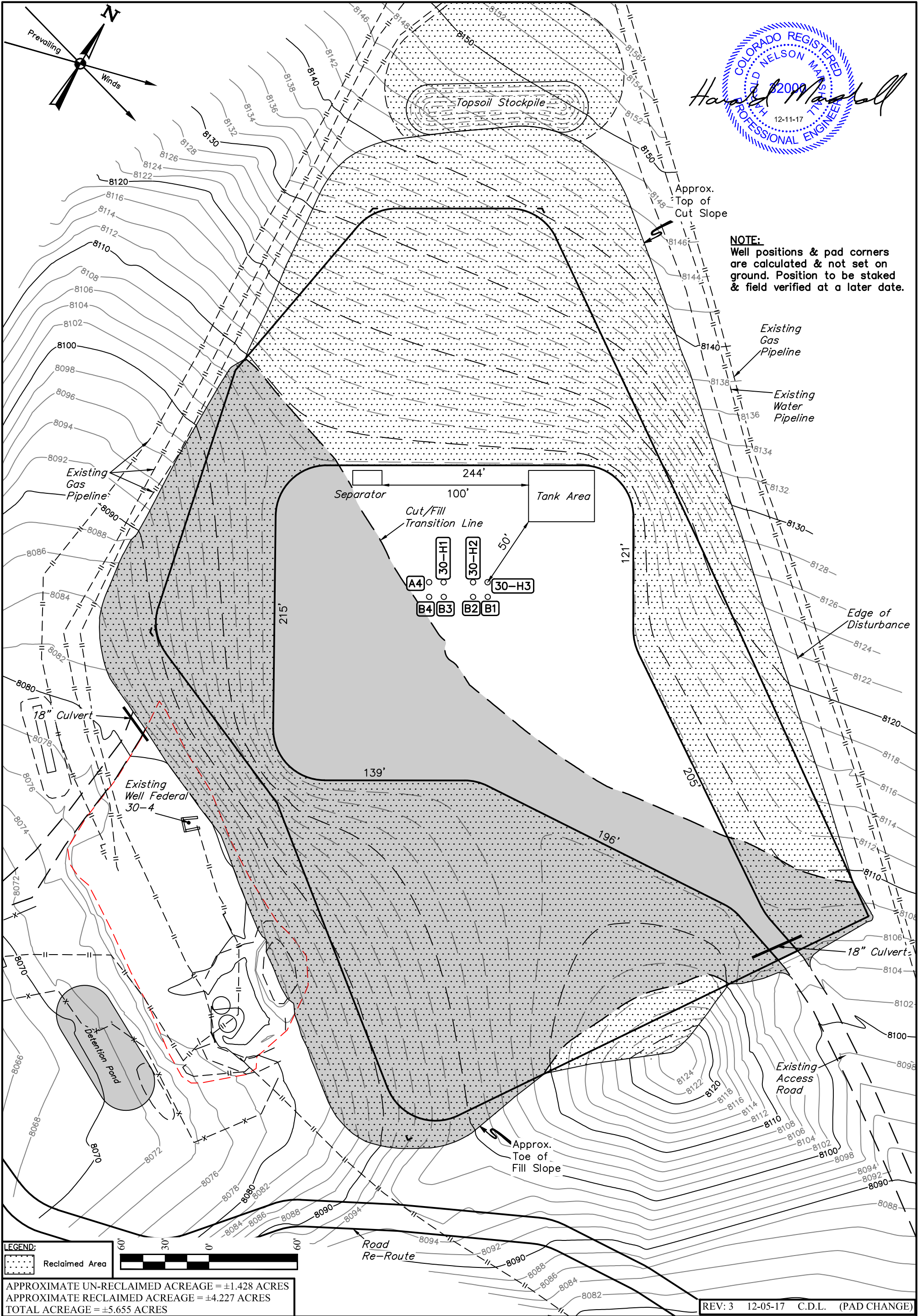
Gunnison Energy LLC

TRAIL GULCH UNIT 1090 30-H1 PAD
SW 1/4 SE 1/4, SECTION 30, T10S, R90W, 6th P.M.
GUNNISON COUNTY, COLORADO

SURVEYED BY	MARTIN PIERCE	11-03-16	SCALE
DRAWN BY	C.D.L.	03-29-17	1" = 60'
ACREAGES			EXHIBIT 1



UELS, LLC
Corporate Office * 85 South 200 East
Vernal, UT 84078 * (435) 789-1017



COLORADO REGISTERED
WILD NELSON
2009
12-11-17
PROFESSIONAL ENGINEER
H. Nelson

NOTE:
Well positions & pad corners
are calculated & not set on
ground. Position to be staked
& field verified at a later date.

Existing Gas Pipeline
Existing Water Pipeline

Edge of Disturbance

18" Culvert

Existing Access Road

Gunnison Energy LLC

TRAIL GULCH UNIT 1090 30-H1 PAD
SW 1/4 SE 1/4, SECTION 30, T10S, R90W, 6th P.M.
GUNNISON COUNTY, COLORADO

SURVEYED BY	MARTIN PIERCE	11-03-16	SCALE
DRAWN BY	C.D.L.	03-29-17	1" = 60'
INTERIM RECLAMATION PLAN			FIGURE #5



UELS, LLC
Corporate Office * 85 South 200 East
Vernal, UT 84078 * (435) 789-1017