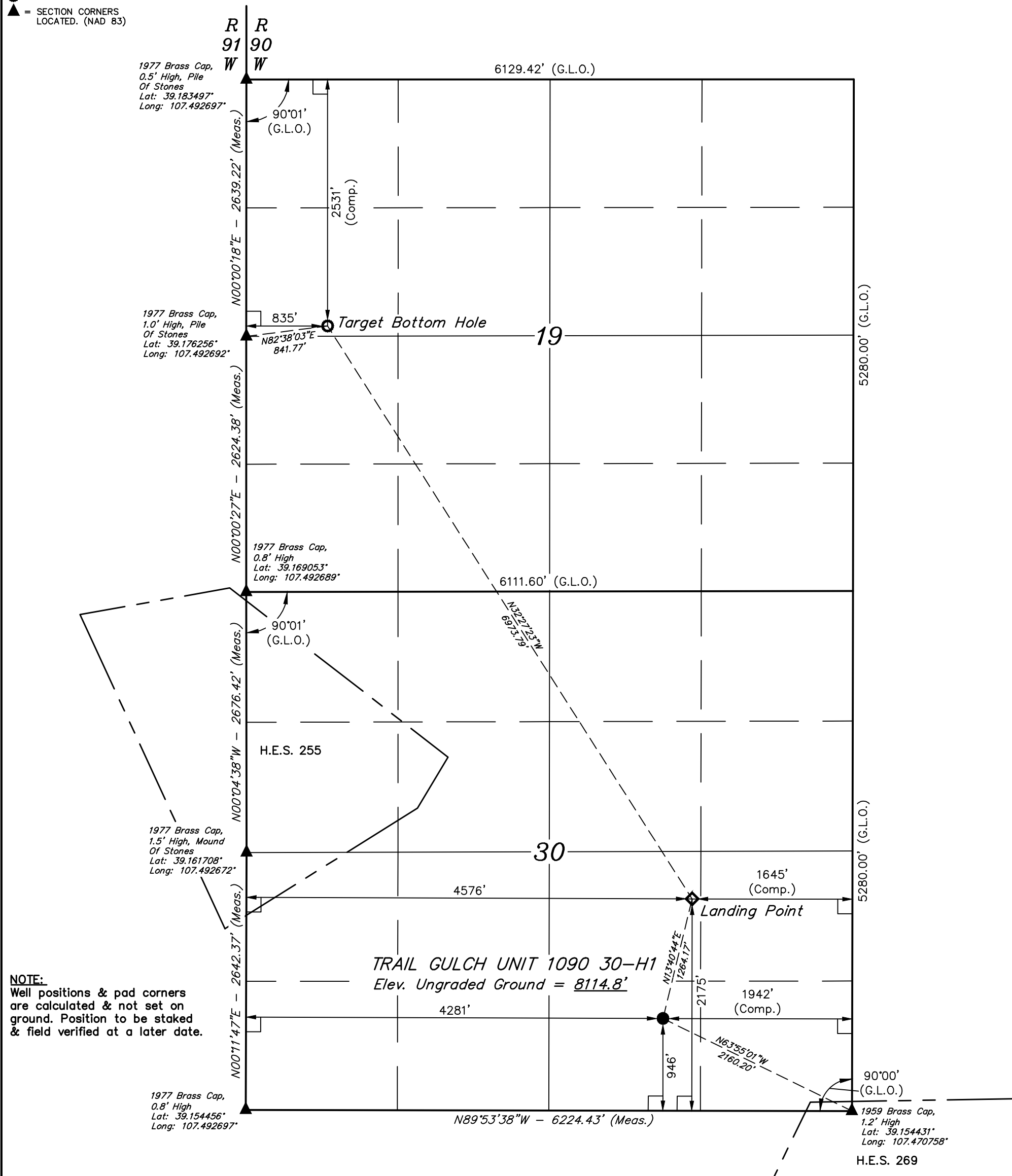


LEGEND:

- └─ = 90° SYMBOL
- = PROPOSED WELLHEAD
- ◇ = LANDING POINT
- = TARGET BOTTOM HOLE
- ▲ = SECTION CORNERS LOCATED. (NAD 83)

T10S, R90W, 6th P.M.



NOTE:
Well positions & pad corners are calculated & not set on ground. Position to be staked & field verified at a later date.



NAD 83 (SURFACE LOCATION)	NAD 83 (LANDING POINT)	NAD 83 (TARGET BOTTOM HOLE)
LATITUDE = 39°09'25.33" (39.157036)	LATITUDE = 39°09'37.46" (39.160406)	LATITUDE = 39°10'35.59" (39.176553)
LONGITUDE = 107°28'39.35" (107.477597)	LONGITUDE = 107°28'35.56" (107.476544)	LONGITUDE = 107°29'23.10" (107.489750)
NAD 27 (SURFACE LOCATION)	NAD 27 (LANDING POINT)	NAD 27 (TARGET BOTTOM HOLE)
LATITUDE = 39°09'25.39" (39.157053)	LATITUDE = 39°09'37.52" (39.160422)	LATITUDE = 39°10'35.65" (39.176569)
LONGITUDE = 107°28'37.16" (107.476989)	LONGITUDE = 107°28'33.37" (107.475936)	LONGITUDE = 107°29'20.90" (107.489139)
UTM NAD 27 (ZONE 13)	UTM NAD 27 (ZONE 13)	UTM NAD 27 (ZONE 13)
N: 14228708.67 E: 938216.79	N: 14229928.21 E: 938548.67	N: 14235910.28 E: 934966.89

CERTIFICATE
THIS IS TO CERTIFY THAT THE ABOVE PLAT WAS PREPARED FROM THE NOTES OF ACTUAL SURVEYS MADE BY ME OR UNDER MY SUPERVISION AND THAT THE LOCATION HAS BEEN STAKED ON THE GROUND AS SHOWN ON THE PLAT AND THAT THE SAME ARE TRUE AND CORRECT TO THE BEST OF MY KNOWLEDGE AND BELIEF.



REV: 4 12-07-17 M.D. (SHL MOVE)

BASIS OF BEARINGS
BASIS OF BEARINGS IS A G.P.S. OBSERVATION

BASIS OF ELEVATION

SPOT ELEVATION LOCATED IN THE NE 1/4 OF SECTION 9, T11S, R90W, 6th P.M. TAKEN FROM THE BULL MOUNTAIN, QUADRANGLE, COLORADO, GUNNISON COUNTY, 7.5 MINUTE QUAD (TOPOGRAPHIC MAP) PUBLISHED BY THE UNITED STATES DEPARTMENT OF THE INTERIOR, GEOLOGICAL SURVEY. SAID ELEVATION IS MARKED AS BEING 7487 FEET.



UELS, LLC
Corporate Office * 85 South 200 East
Vernal, UT 84078 * (435) 789-1017



Gunnison Energy LLC

TRAIL GULCH UNIT 1090 30-H1
SW 1/4 SE 1/4, SECTION 30, T10S, R90W, 6th P.M.
GUNNISON COUNTY, COLORADO

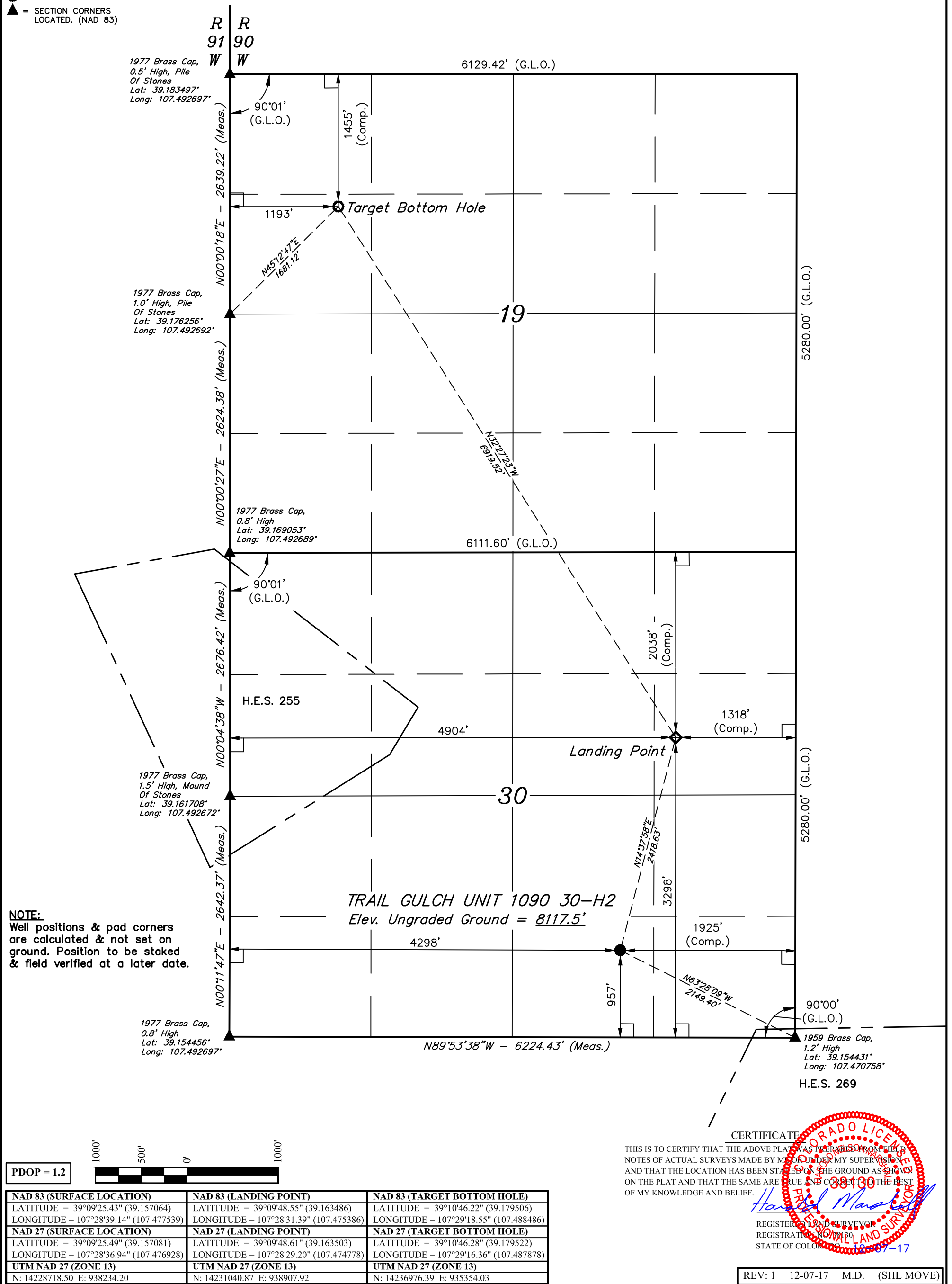
SURVEYED BY	MARTIN PIERCE	11-03-16	SCALE
DRAWN BY	C.D.L.	03-29-17	1" = 1000'

WELL LOCATION PLAT

LEGEND:

- └─┘ = 90° SYMBOL
- = PROPOSED WELLHEAD
- ◇ = LANDING POINT
- = TARGET BOTTOM HOLE
- ▲ = SECTION CORNERS LOCATED. (NAD 83)

T10S, R90W, 6th P.M.



NOTE:
Well positions & pad corners are calculated & not set on ground. Position to be staked & field verified at a later date.

TRAIL GULCH UNIT 1090 30-H2
Elev. Ungraded Ground = 8117.5'



PDOP = 1.2

NAD 83 (SURFACE LOCATION)	NAD 83 (LANDING POINT)	NAD 83 (TARGET BOTTOM HOLE)
LATITUDE = 39°09'25.43" (39.157064)	LATITUDE = 39°09'48.55" (39.163486)	LATITUDE = 39°10'46.22" (39.179506)
LONGITUDE = 107°28'39.14" (107.477539)	LONGITUDE = 107°28'31.39" (107.475386)	LONGITUDE = 107°29'18.55" (107.488486)
NAD 27 (SURFACE LOCATION)	NAD 27 (LANDING POINT)	NAD 27 (TARGET BOTTOM HOLE)
LATITUDE = 39°09'25.49" (39.157081)	LATITUDE = 39°09'48.61" (39.163503)	LATITUDE = 39°10'46.28" (39.179522)
LONGITUDE = 107°28'36.94" (107.476928)	LONGITUDE = 107°28'29.20" (107.474778)	LONGITUDE = 107°29'16.36" (107.487878)
UTM NAD 27 (ZONE 13)	UTM NAD 27 (ZONE 13)	UTM NAD 27 (ZONE 13)
N: 14228718.50 E: 938234.20	N: 14231040.87 E: 938907.92	N: 14236976.39 E: 935354.03

CERTIFICATE
THIS IS TO CERTIFY THAT THE ABOVE PLAT WAS PREPARED FROM THE NOTES OF ACTUAL SURVEYS MADE BY ME OR UNDER MY SUPERVISION AND THAT THE LOCATION HAS BEEN STAKED ON THE GROUND AS SHOWN ON THE PLAT AND THAT THE SAME ARE TRUE AND CORRECT TO THE BEST OF MY KNOWLEDGE AND BELIEF.

Handwritten Signature
REGISTERED LAND SURVEYOR
REGISTRATION NO. 10010
STATE OF COLORADO
12-07-17

REV: 1 12-07-17 M.D. (SHL MOVE)

BASIS OF BEARINGS
BASIS OF BEARINGS IS A G.P.S. OBSERVATION

BASIS OF ELEVATION

SPOT ELEVATION LOCATED IN THE NE 1/4 OF SECTION 9, T11S, R90W, 6th P.M. TAKEN FROM THE BULL MOUNTAIN, QUADRANGLE, COLORADO, GUNNISON COUNTY, 7.5 MINUTE QUAD (TOPOGRAPHIC MAP) PUBLISHED BY THE UNITED STATES DEPARTMENT OF THE INTERIOR, GEOLOGICAL SURVEY. SAID ELEVATION IS MARKED AS BEING 7487 FEET.



UELS, LLC
Corporate Office * 85 South 200 East
Vernal, UT 84078 * (435) 789-1017



Gunnison Energy LLC

TRAIL GULCH UNIT 1090 30-H2
SW 1/4 SE 1/4, SECTION 30, T10S, R90W, 6th P.M.
GUNNISON COUNTY, COLORADO

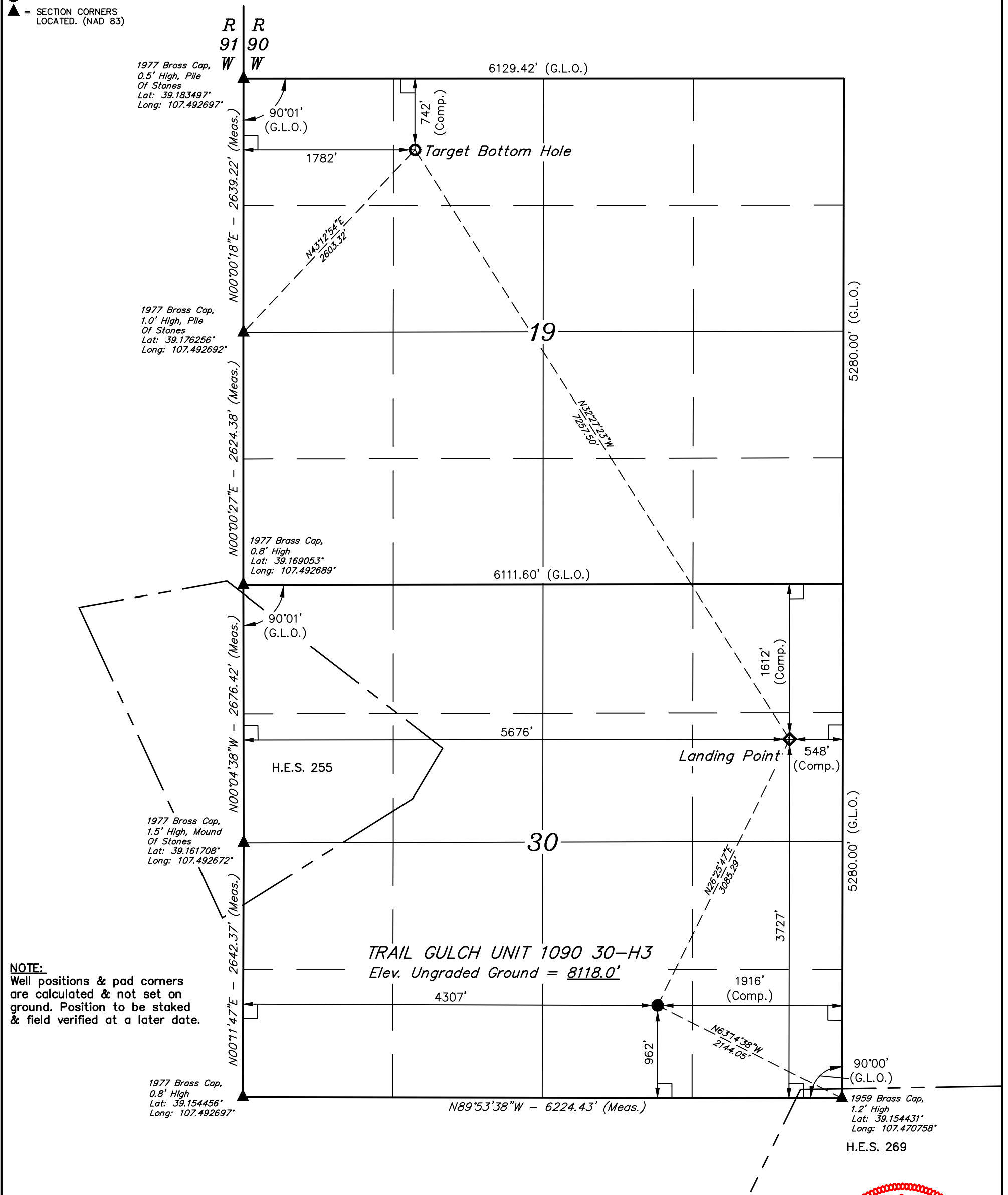
SURVEYED BY	BART HUNTING, F.R.	10-16-17	SCALE
DRAWN BY	M.D.	10-19-17	1" = 1000'

WELL LOCATION PLAT

LEGEND:

- └─┘ = 90° SYMBOL
- = PROPOSED WELLHEAD
- ◇ = LANDING POINT
- = TARGET BOTTOM HOLE
- ▲ = SECTION CORNERS LOCATED. (NAD 83)

T10S, R90W, 6th P.M.



NOTE:
Well positions & pad corners are calculated & not set on ground. Position to be staked & field verified at a later date.

TRAIL GULCH UNIT 1090 30-H3
Elev. Ungraded Ground = 8118.0'



NAD 83 (SURFACE LOCATION)	NAD 83 (LANDING POINT)	NAD 83 (TARGET BOTTOM HOLE)
LATITUDE = 39°09'25.48" (39.157078)	LATITUDE = 39°09'52.78" (39.164661)	LATITUDE = 39°10'53.27" (39.181464)
LONGITUDE = 107°28'39.03" (107.477508)	LONGITUDE = 107°28'21.61" (107.472669)	LONGITUDE = 107°29'11.08" (107.486411)
NAD 27 (SURFACE LOCATION)	NAD 27 (LANDING POINT)	NAD 27 (TARGET BOTTOM HOLE)
LATITUDE = 39°09'25.54" (39.157094)	LATITUDE = 39°09'52.84" (39.164678)	LATITUDE = 39°10'53.33" (39.181481)
LONGITUDE = 107°28'36.83" (107.476897)	LONGITUDE = 107°28'19.42" (107.472061)	LONGITUDE = 107°29'08.88" (107.485800)
UTM NAD 27 (ZONE 13)	UTM NAD 27 (ZONE 13)	UTM NAD 27 (ZONE 13)
N: 14228723.42 E: 938242.90	N: 14231447.61 E: 939689.84	N: 14237673.04 E: 935962.37

CERTIFICATE
THIS IS TO CERTIFY THAT THE ABOVE PLAT WAS PREPARED FROM FIELD NOTES OF ACTUAL SURVEYS MADE BY ME OR UNDER MY SUPERVISION AND THAT THE LOCATION HAS BEEN STAKED ON THE GROUND AS SHOWN ON THE PLAT AND THAT THE SAME ARE TRUE AND CORRECT TO THE BEST OF MY KNOWLEDGE AND BELIEF.

Handwritten Signature: Harold Marshall
REGISTERED PROFESSIONAL LAND SURVEYOR
REGISTRATION NO. 12345
STATE OF COLORADO 12-07-17

REV: 1 12-07-17 M.D. (SHL MOVE)

BASIS OF BEARINGS
BASIS OF BEARINGS IS A G.P.S. OBSERVATION
BASIS OF ELEVATION

SPOT ELEVATION LOCATED IN THE NE 1/4 OF SECTION 9, T11S, R90W, 6th P.M. TAKEN FROM THE BULL MOUNTAIN, QUADRANGLE, COLORADO, GUNNISON COUNTY, 7.5 MINUTE QUAD (TOPOGRAPHIC MAP) PUBLISHED BY THE UNITED STATES DEPARTMENT OF THE INTERIOR, GEOLOGICAL SURVEY. SAID ELEVATION IS MARKED AS BEING 7487 FEET.



UELS, LLC
Corporate Office * 85 South 200 East
Vernal, UT 84078 * (435) 789-1017



Gunnison Energy LLC

TRAIL GULCH UNIT 1090 30-H3
SW 1/4 SE 1/4, SECTION 30, T10S, R90W, 6th P.M.
GUNNISON COUNTY, COLORADO

SURVEYED BY	BART HUNTING, F.R.	10-16-17	SCALE
DRAWN BY	M.D.	10-19-17	1" = 1000'

WELL LOCATION PLAT