

PHOTO: VIEW FROM CORNER #5 TO LOCATION STAKES

CAMERA ANGLE: SOUTHEASTERLY



PHOTO: VIEW OF EXISTING ACCESS

CAMERA ANGLE: EASTERLY

REV: 2 10-18-17 Z.T. (SHL CHANGE)

Gunnison Energy LLC

**TRAIL GULCH UNIT 1090 30-H1 PAD
SW 1/4 SE 1/4, SECTION 30, T10S, R90W, 6th P.M.
GUNNISON COUNTY, COLORADO**



UELS, LLC
Corporate Office * 85 South 200 East
Vernal, UT 84078 * (435) 789-1017

TAKEN BY	M.P.	11-03-16	
DRAWN BY	T.L.	03-29-17	
LOCATION PHOTOS			PHOTO 1



PHOTO: VIEW OF LOCATION STAKES

CAMERA ANGLE: NORTHERLY

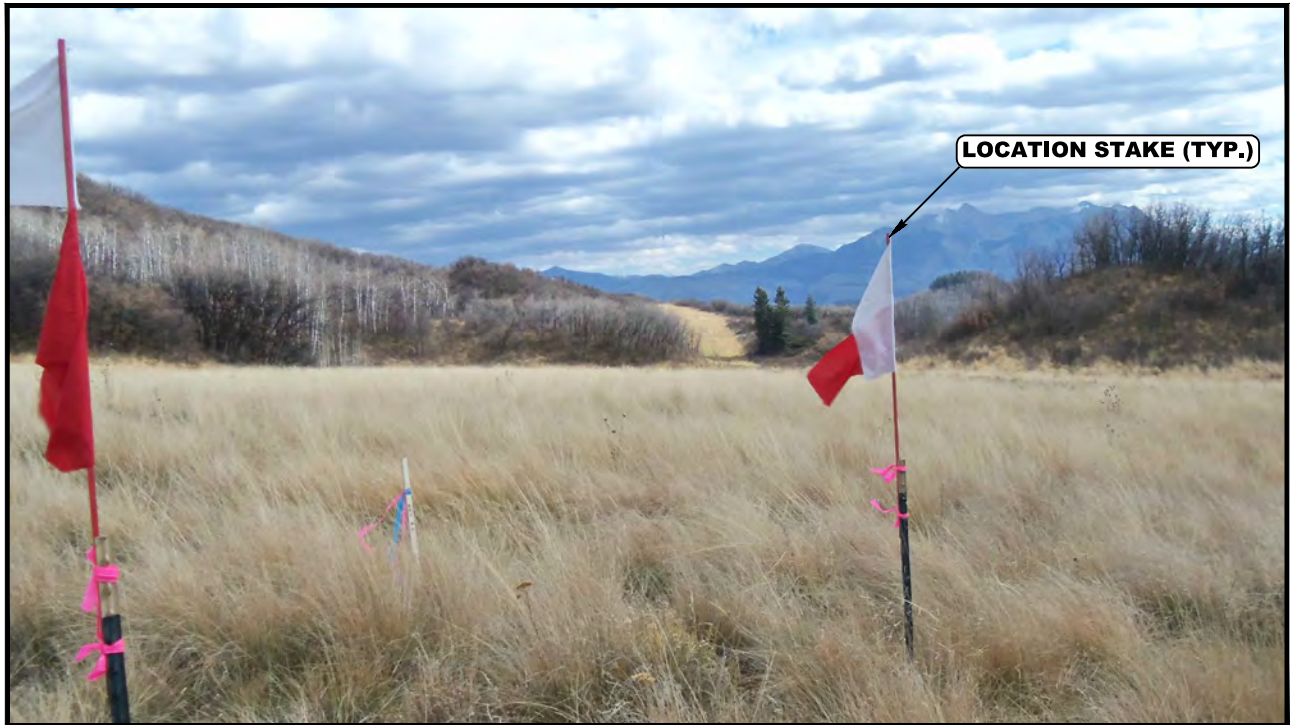


PHOTO: VIEW OF LOCATION STAKES

CAMERA ANGLE: EASTERLY

REV: 2 10-18-17 Z.T. (SHL CHANGE)

Gunnison Energy LLC

**TRAIL GULCH UNIT 1090 30-H1 PAD
SW 1/4 SE 1/4, SECTION 30, T10S, R90W, 6th P.M.
GUNNISON COUNTY, COLORADO**



UELS, LLC
Corporate Office * 85 South 200 East
Vernal, UT 84078 * (435) 789-1017

TAKEN BY	M.P.	11-03-16	
DRAWN BY	T.L.	03-29-17	
LOCATION PHOTOS			PHOTO 2



PHOTO: VIEW OF LOCATION STAKES

CAMERA ANGLE: SOUTHERLY



PHOTO: VIEW OF LOCATION STAKES

CAMERA ANGLE: WESTERLY

REV: 2 10-18-17 Z.T. (SHL CHANGE)

Gunnison Energy LLC

**TRAIL GULCH UNIT 1090 30-H1 PAD
SW 1/4 SE 1/4, SECTION 30, T10S, R90W, 6th P.M.
GUNNISON COUNTY, COLORADO**



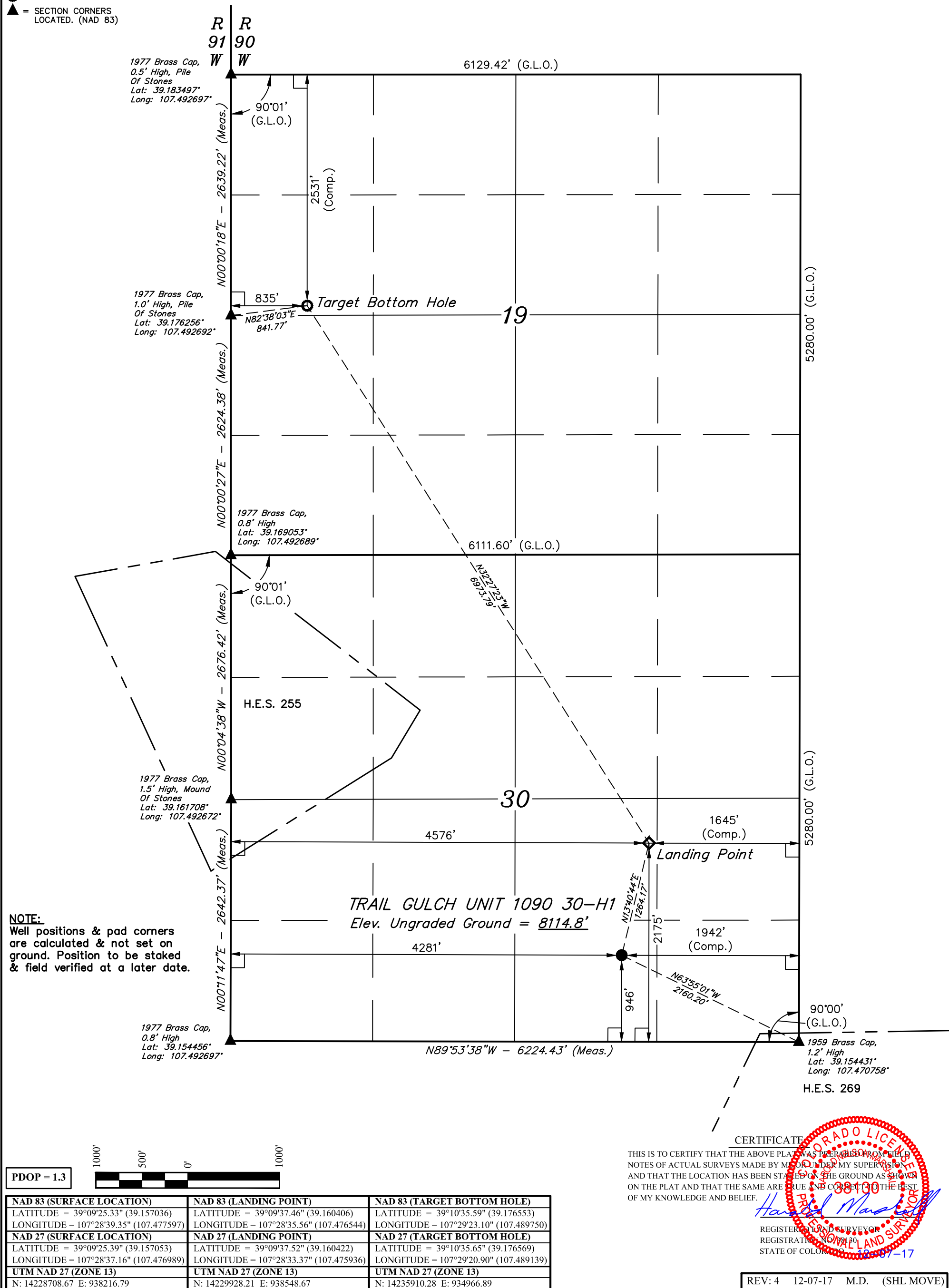
UELS, LLC
Corporate Office * 85 South 200 East
Vernal, UT 84078 * (435) 789-1017

TAKEN BY	M.P.	11-03-16	
DRAWN BY	T.L.	03-29-17	
LOCATION PHOTOS			PHOTO 3

LEGEND:

- └─ = 90° SYMBOL
- = PROPOSED WELLHEAD
- ◇ = LANDING POINT
- = TARGET BOTTOM HOLE
- ▲ = SECTION CORNERS LOCATED. (NAD 83)

T10S, R90W, 6th P.M.



NOTE:
Well positions & pad corners are calculated & not set on ground. Position to be staked & field verified at a later date.

PDOP = 1.3



NAD 83 (SURFACE LOCATION)	NAD 83 (LANDING POINT)	NAD 83 (TARGET BOTTOM HOLE)
LATITUDE = 39°09'25.33" (39.157036)	LATITUDE = 39°09'37.46" (39.160406)	LATITUDE = 39°10'35.59" (39.176553)
LONGITUDE = 107°28'39.35" (107.477597)	LONGITUDE = 107°28'35.56" (107.476544)	LONGITUDE = 107°29'23.10" (107.489750)
NAD 27 (SURFACE LOCATION)	NAD 27 (LANDING POINT)	NAD 27 (TARGET BOTTOM HOLE)
LATITUDE = 39°09'25.39" (39.157053)	LATITUDE = 39°09'37.52" (39.160422)	LATITUDE = 39°10'35.65" (39.176569)
LONGITUDE = 107°28'37.16" (107.476989)	LONGITUDE = 107°28'33.37" (107.475936)	LONGITUDE = 107°29'20.90" (107.489139)
UTM NAD 27 (ZONE 13)	UTM NAD 27 (ZONE 13)	UTM NAD 27 (ZONE 13)
N: 14228708.67 E: 938216.79	N: 14229928.21 E: 938548.67	N: 14235910.28 E: 934966.89

CERTIFICATE

THIS IS TO CERTIFY THAT THE ABOVE PLAT WAS PREPARED FROM THE NOTES OF ACTUAL SURVEYS MADE BY ME OR UNDER MY SUPERVISION AND THAT THE LOCATION HAS BEEN STAKED ON THE GROUND AS SHOWN ON THE PLAT AND THAT THE SAME ARE TRUE AND CORRECT TO THE BEST OF MY KNOWLEDGE AND BELIEF.

Handwritten Signature
REGISTERED LAND SURVEYOR
REGISTRATION NO. 10000
STATE OF COLORADO
12-29-17

REV: 4 12-07-17 M.D. (SHL MOVE)

BASIS OF BEARINGS

BASIS OF BEARINGS IS A G.P.S. OBSERVATION

BASIS OF ELEVATION

SPOT ELEVATION LOCATED IN THE NE 1/4 OF SECTION 9, T11S, R90W, 6th P.M. TAKEN FROM THE BULL MOUNTAIN, QUADRANGLE, COLORADO, GUNNISON COUNTY, 7.5 MINUTE QUAD (TOPOGRAPHIC MAP) PUBLISHED BY THE UNITED STATES DEPARTMENT OF THE INTERIOR, GEOLOGICAL SURVEY. SAID ELEVATION IS MARKED AS BEING 7487 FEET.

UELS, LLC

Corporate Office * 85 South 200 East
Vernal, UT 84078 * (435) 789-1017



Gunnison Energy LLC

TRAIL GULCH UNIT 1090 30-H1
SW 1/4 SE 1/4, SECTION 30, T10S, R90W, 6th P.M.
GUNNISON COUNTY, COLORADO

SURVEYED BY	MARTIN PIERCE	11-03-16	SCALE
DRAWN BY	C.D.L.	03-29-17	1" = 1000'

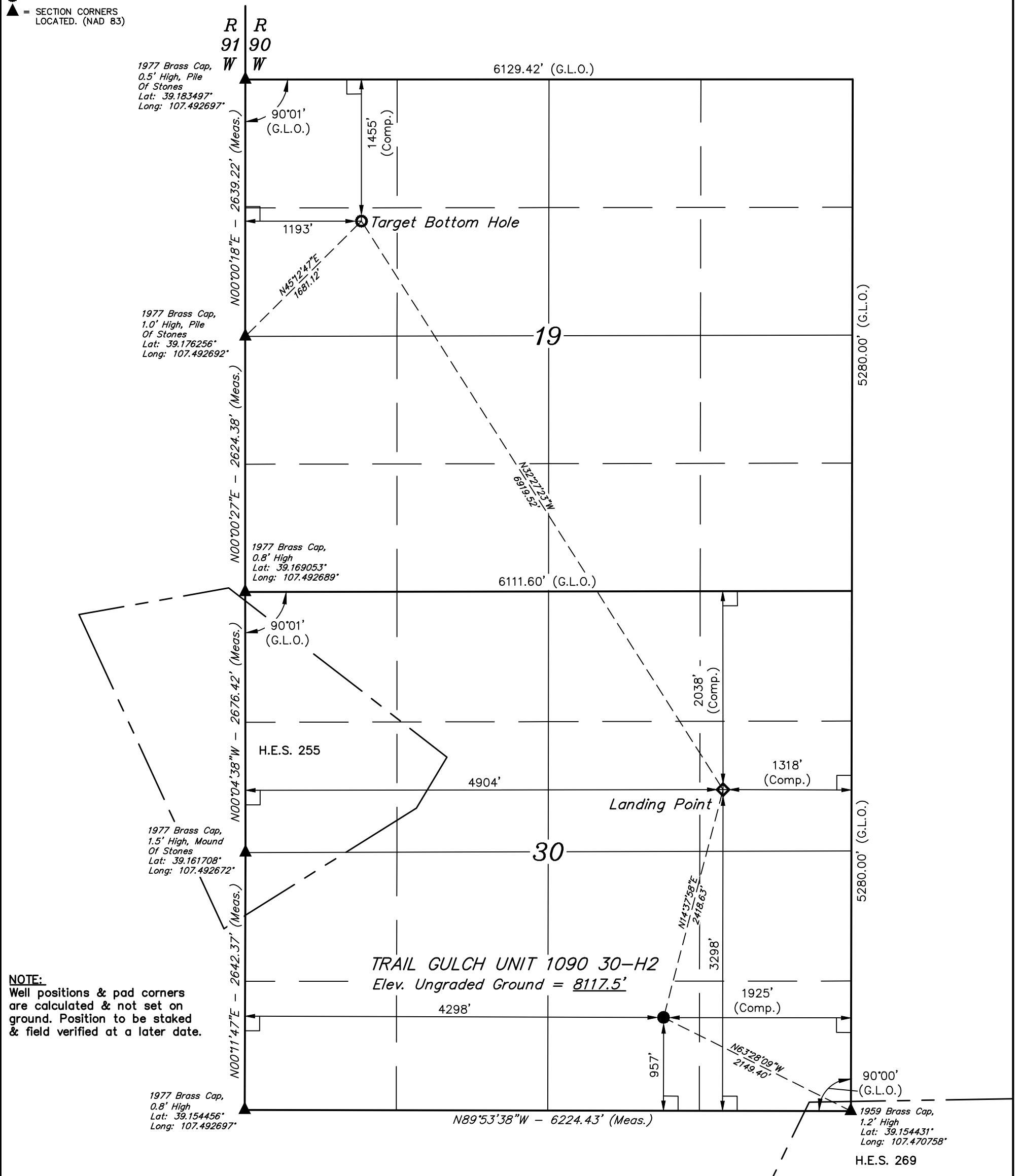
WELL LOCATION PLAT



LEGEND:

- └─┘ = 90° SYMBOL
- = PROPOSED WELLHEAD
- ◇ = LANDING POINT
- = TARGET BOTTOM HOLE
- ▲ = SECTION CORNERS LOCATED. (NAD 83)

T10S, R90W, 6th P.M.



NOTE:
Well positions & pad corners are calculated & not set on ground. Position to be staked & field verified at a later date.

TRAIL GULCH UNIT 1090 30-H2
Elev. Ungraded Ground = 8117.5'



NAD 83 (SURFACE LOCATION)	NAD 83 (LANDING POINT)	NAD 83 (TARGET BOTTOM HOLE)
LATITUDE = 39°09'25.43" (39.157064)	LATITUDE = 39°09'48.55" (39.163486)	LATITUDE = 39°10'46.22" (39.179506)
LONGITUDE = 107°28'39.14" (107.477539)	LONGITUDE = 107°28'31.39" (107.475386)	LONGITUDE = 107°29'18.55" (107.488486)
NAD 27 (SURFACE LOCATION)	NAD 27 (LANDING POINT)	NAD 27 (TARGET BOTTOM HOLE)
LATITUDE = 39°09'25.49" (39.157081)	LATITUDE = 39°09'48.61" (39.163503)	LATITUDE = 39°10'46.28" (39.179522)
LONGITUDE = 107°28'36.94" (107.476928)	LONGITUDE = 107°28'29.20" (107.474778)	LONGITUDE = 107°29'16.36" (107.487878)
UTM NAD 27 (ZONE 13)	UTM NAD 27 (ZONE 13)	UTM NAD 27 (ZONE 13)
N: 14228718.50 E: 938234.20	N: 14231040.87 E: 938907.92	N: 14236976.39 E: 935354.03

CERTIFICATE
THIS IS TO CERTIFY THAT THE ABOVE PLAT WAS PREPARED FROM THE NOTES OF ACTUAL SURVEYS MADE BY ME OR UNDER MY SUPERVISION AND THAT THE LOCATION HAS BEEN STAKED ON THE GROUND AS SHOWN ON THE PLAT AND THAT THE SAME ARE TRUE AND CORRECT TO THE BEST OF MY KNOWLEDGE AND BELIEF.

Handwritten Signature
REGISTERED LAND SURVEYOR
REGISTRATION NO. 10910
STATE OF COLORADO
12-07-17

REV: 1 12-07-17 M.D. (SHL MOVE)

BASIS OF BEARINGS
BASIS OF BEARINGS IS A G.P.S. OBSERVATION

BASIS OF ELEVATION
SPOT ELEVATION LOCATED IN THE NE 1/4 OF SECTION 9, T11S, R90W, 6th P.M. TAKEN FROM THE BULL MOUNTAIN, QUADRANGLE, COLORADO, GUNNISON COUNTY, 7.5 MINUTE QUAD (TOPOGRAPHIC MAP) PUBLISHED BY THE UNITED STATES DEPARTMENT OF THE INTERIOR, GEOLOGICAL SURVEY. SAID ELEVATION IS MARKED AS BEING 7487 FEET.



UELS, LLC
Corporate Office * 85 South 200 East
Vernal, UT 84078 * (435) 789-1017



Gunnison Energy LLC

TRAIL GULCH UNIT 1090 30-H2
SW 1/4 SE 1/4, SECTION 30, T10S, R90W, 6th P.M.
GUNNISON COUNTY, COLORADO

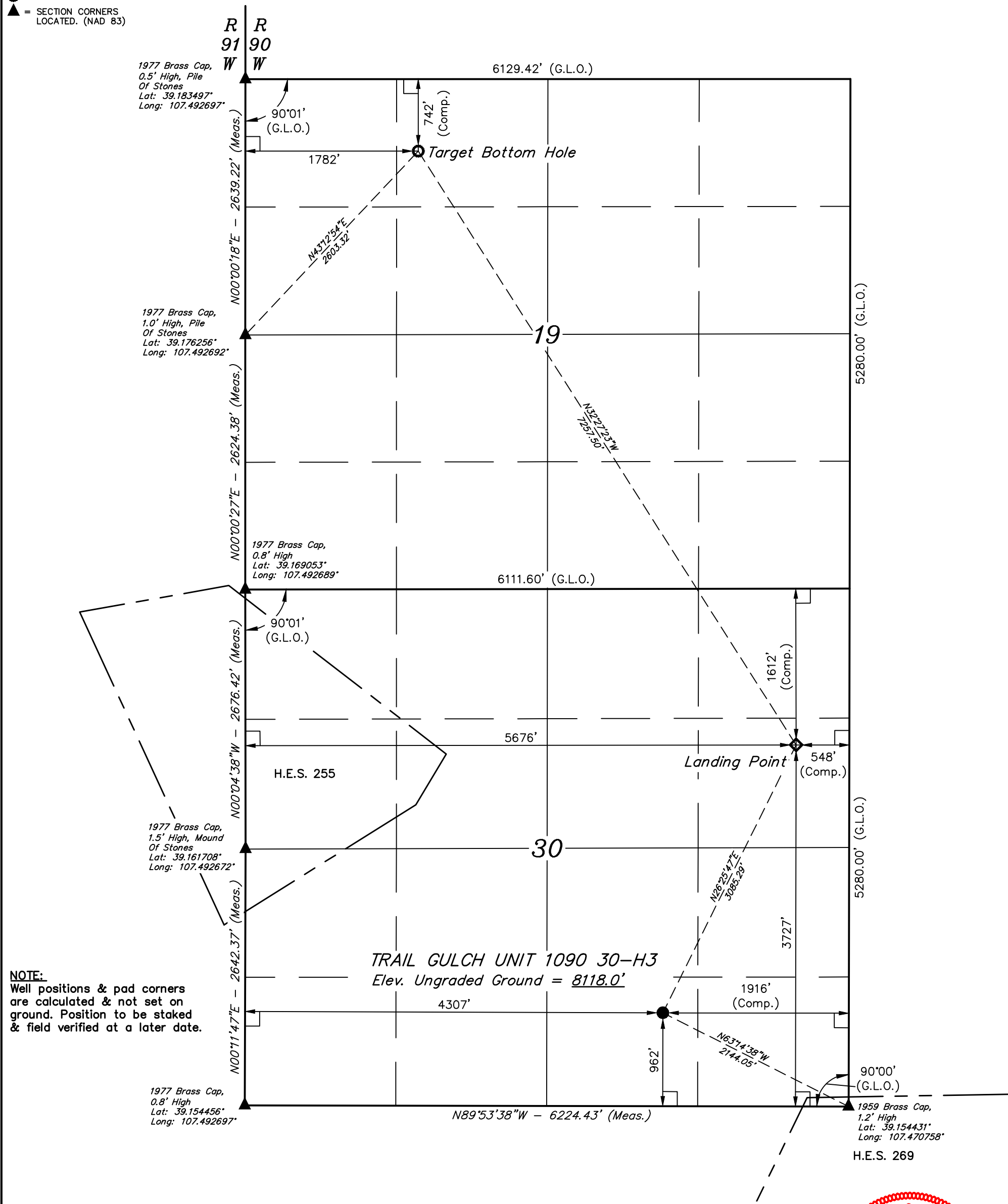
SURVEYED BY	BART HUNTING, F.R.	10-16-17	SCALE
DRAWN BY	M.D.	10-19-17	1" = 1000'

WELL LOCATION PLAT

LEGEND:

- └─┘ = 90° SYMBOL
- = PROPOSED WELLHEAD
- ◇ = LANDING POINT
- = TARGET BOTTOM HOLE
- ▲ = SECTION CORNERS LOCATED. (NAD 83)

T10S, R90W, 6th P.M.

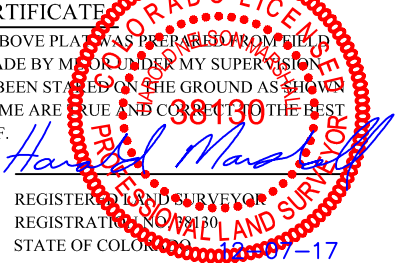


NOTE:
Well positions & pad corners are calculated & not set on ground. Position to be staked & field verified at a later date.



NAD 83 (SURFACE LOCATION)	NAD 83 (LANDING POINT)	NAD 83 (TARGET BOTTOM HOLE)
LATITUDE = 39°09'25.48" (39.157078)	LATITUDE = 39°09'52.78" (39.164661)	LATITUDE = 39°10'53.27" (39.181464)
LONGITUDE = 107°28'39.03" (107.477508)	LONGITUDE = 107°28'21.61" (107.472669)	LONGITUDE = 107°29'11.08" (107.486411)
NAD 27 (SURFACE LOCATION)	NAD 27 (LANDING POINT)	NAD 27 (TARGET BOTTOM HOLE)
LATITUDE = 39°09'25.54" (39.157094)	LATITUDE = 39°09'52.84" (39.164678)	LATITUDE = 39°10'53.33" (39.181481)
LONGITUDE = 107°28'36.83" (107.476897)	LONGITUDE = 107°28'19.42" (107.472061)	LONGITUDE = 107°29'08.88" (107.485800)
UTM NAD 27 (ZONE 13)	UTM NAD 27 (ZONE 13)	UTM NAD 27 (ZONE 13)
N: 14228723.42 E: 938242.90	N: 14231447.61 E: 939689.84	N: 14237673.04 E: 935962.37

CERTIFICATE
THIS IS TO CERTIFY THAT THE ABOVE PLAT WAS PREPARED FROM THE NOTES OF ACTUAL SURVEYS MADE BY ME OR UNDER MY SUPERVISION AND THAT THE LOCATION HAS BEEN STAKED ON THE GROUND AS SHOWN ON THE PLAT AND THAT THE SAME ARE TRUE AND CORRECT TO THE BEST OF MY KNOWLEDGE AND BELIEF.



REGISTERED LAND SURVEYOR
REGISTRATION NO. 88130
STATE OF COLORADO 12-07-17

REV: 1 12-07-17 M.D. (SHL MOVE)

BASIS OF BEARINGS
BASIS OF BEARINGS IS A G.P.S. OBSERVATION

BASIS OF ELEVATION
SPOT ELEVATION LOCATED IN THE NE 1/4 OF SECTION 9, T11S, R90W, 6th P.M. TAKEN FROM THE BULL MOUNTAIN, QUADRANGLE, COLORADO, GUNNISON COUNTY, 7.5 MINUTE QUAD (TOPOGRAPHIC MAP) PUBLISHED BY THE UNITED STATES DEPARTMENT OF THE INTERIOR, GEOLOGICAL SURVEY. SAID ELEVATION IS MARKED AS BEING 7487 FEET.

UELS, LLC
Corporate Office * 85 South 200 East
Vernal, UT 84078 * (435) 789-1017

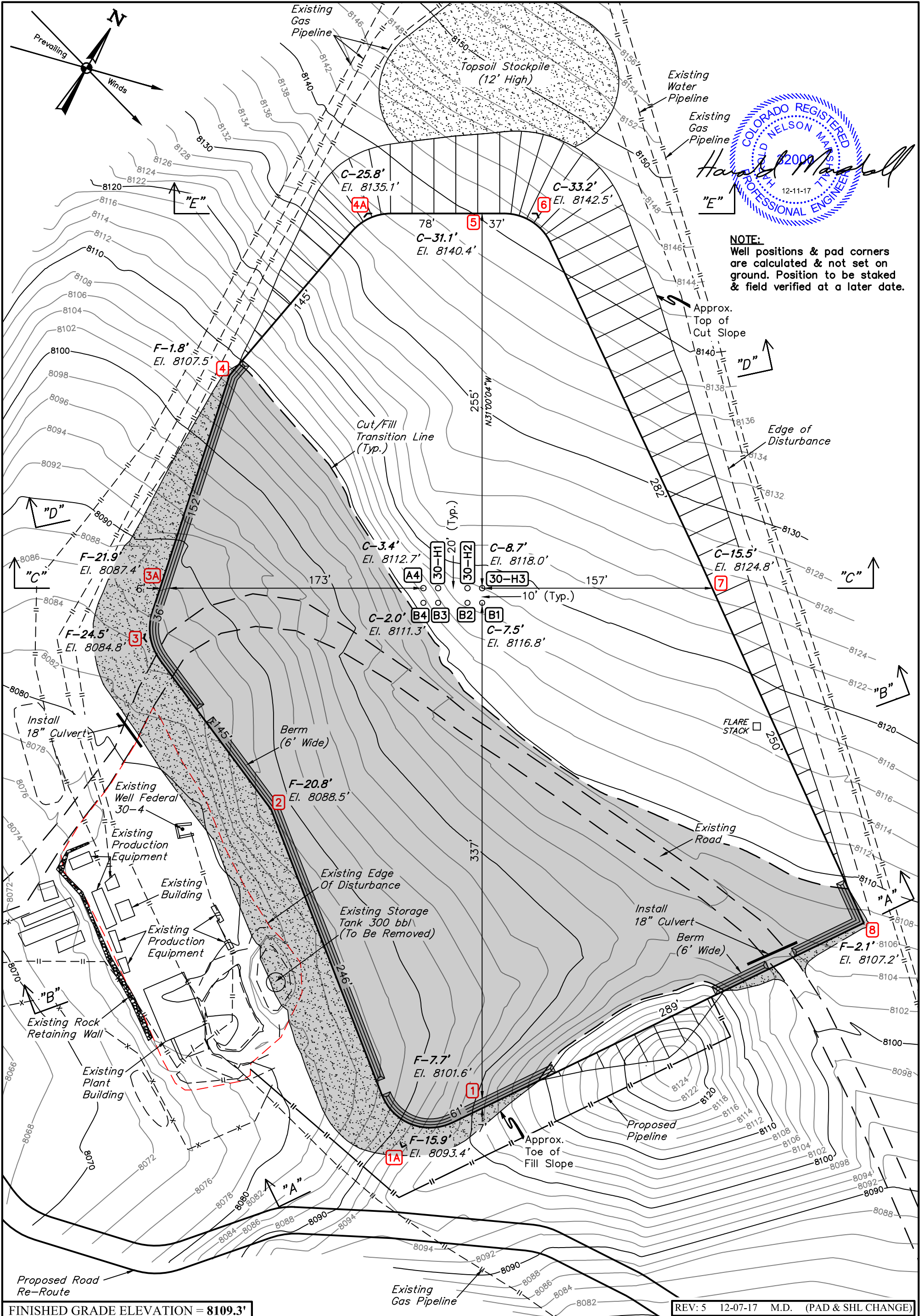


Gunnison Energy LLC

TRAIL GULCH UNIT 1090 30-H3
SW 1/4 SE 1/4, SECTION 30, T10S, R90W, 6th P.M.
GUNNISON COUNTY, COLORADO

SURVEYED BY	BART HUNTING, F.R.	10-16-17	SCALE
DRAWN BY	M.D.	10-19-17	1" = 1000'

WELL LOCATION PLAT



Harold Marshall

NOTE:
 Well positions & pad corners are calculated & not set on ground. Position to be staked & field verified at a later date.

FINISHED GRADE ELEVATION = 8109.3'

REV: 5 12-07-17 M.D. (PAD & SHL CHANGE)

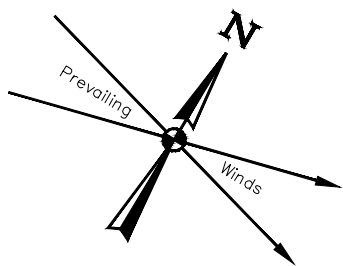
- NOTES:**
- Flare Stack is to be located a min. of 100' from the wellhead.
 - Round corners at 35' radius or as needed.
 - Contours shown at 2' intervals.
 - Cut/Fill slopes 1 1/2:1 (Typ.).
 - Production Facility to be Removed and Relocated.

Gunnison Energy LLC

TRAIL GULCH UNIT 1090 30-H1 PAD
 SW 1/4 SE 1/4, SECTION 30, T10S, R90W, 6th P.M.
 GUNNISON COUNTY, COLORADO

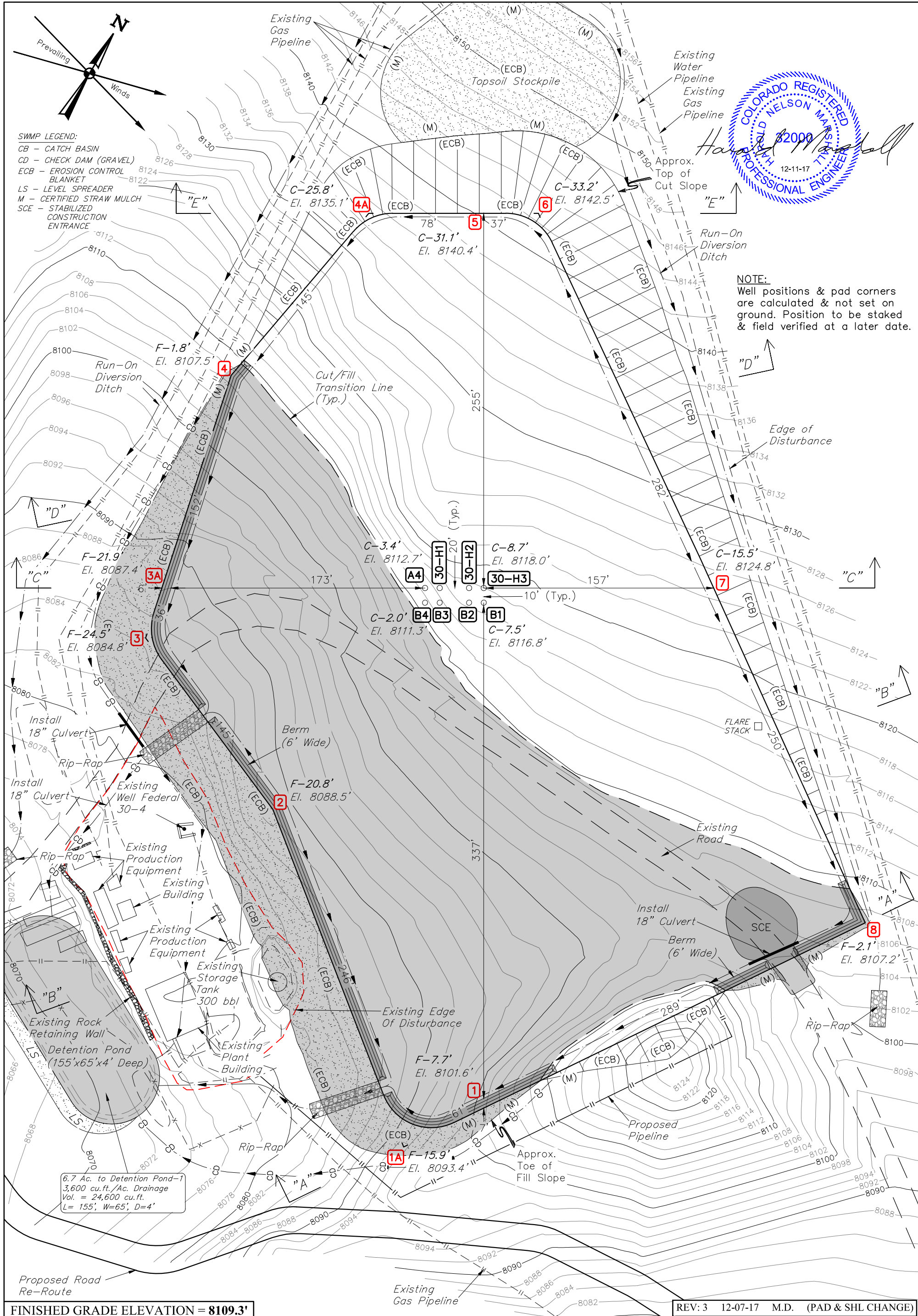
UELS, LLC
 Corporate Office * 85 South 200 East
 Vernal, UT 84078 * (435) 789-1017

SURVEYED BY	MARTIN PIERCE	11-03-16	SCALE
DRAWN BY	C.D.L.	03-29-17	1" = 60'
CONSTRUCTION LAYOUT			FIGURE #1



SWMP LEGEND:

- CB - CATCH BASIN
- CD - CHECK DAM (GRAVEL)
- ECB - EROSION CONTROL BLANKET
- LS - LEVEL SPREADER
- M - CERTIFIED STRAW MULCH
- SCE - STABILIZED CONSTRUCTION ENTRANCE



NOTE:
Well positions & pad corners are calculated & not set on ground. Position to be staked & field verified at a later date.

FINISHED GRADE ELEVATION = 8109.3'

REV: 3 12-07-17 M.D. (PAD & SHL CHANGE)

- NOTES:**
- Flare Stack is to be located a min. of 100' from the wellhead.
 - Round corners at 35' radius or as needed.
 - Contours shown at 2' intervals.
 - Cut/Fill slopes 1 1/2:1 (Typ.).
 - Production Facility to be Removed and Relocated.

Gunnison Energy LLC

TRAIL GULCH UNIT 1090 30-H1 PAD
SW 1/4 SE 1/4, SECTION 30, T10S, R90W, 6th P.M.
GUNNISON COUNTY, COLORADO



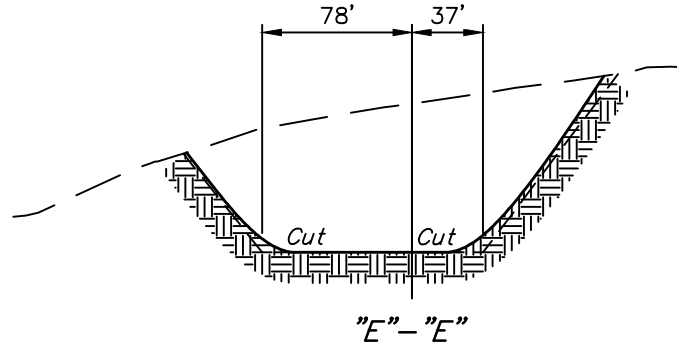
UELS, LLC
Corporate Office * 85 South 200 East
Vernal, UT 84078 * (435) 789-1017

SURVEYED BY	MARTIN PIERCE	11-03-16	SCALE
DRAWN BY	C.D.L.	03-29-17	1" = 60'

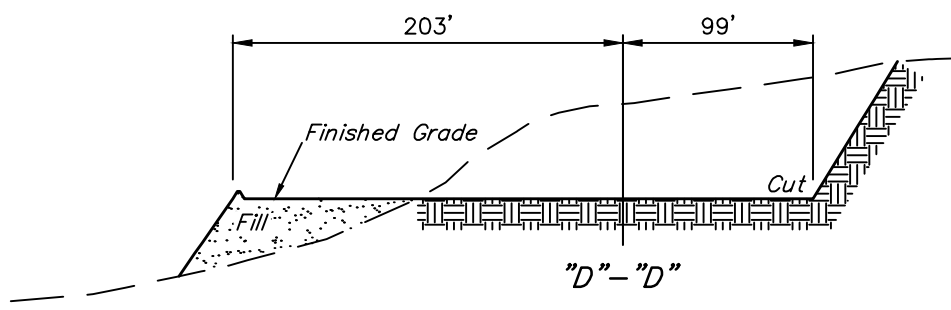
CONSTRUCTION LAYOUT FIGURE #2

6.7 Ac. to Detention Pond=1
3,600 cu.ft./Ac. Drainage
Vol. = 24,600 cu.ft.
L= 155', W=65', D=4'

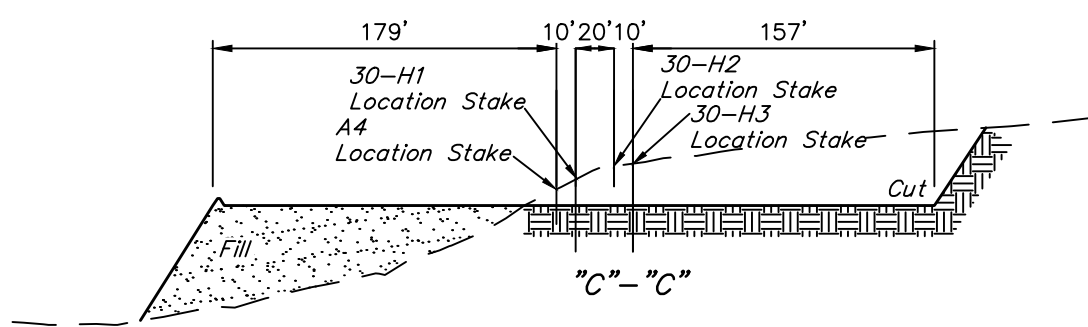
1" = 40'
 X-Section
 Scale
 1" = 100'



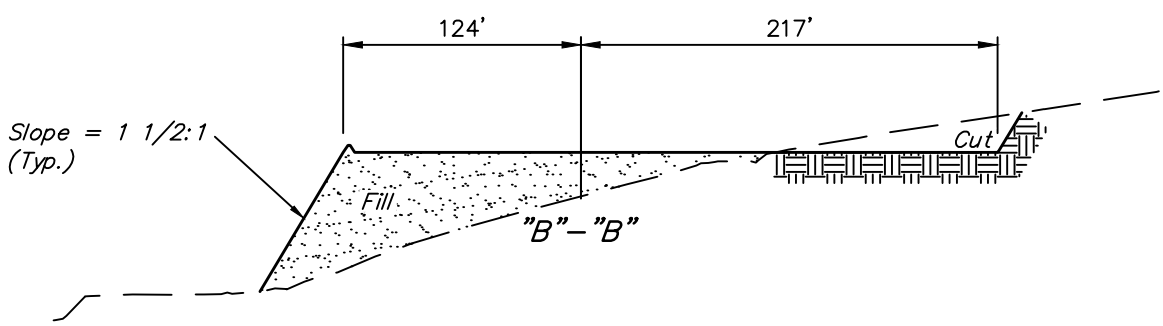
"E" - "E"



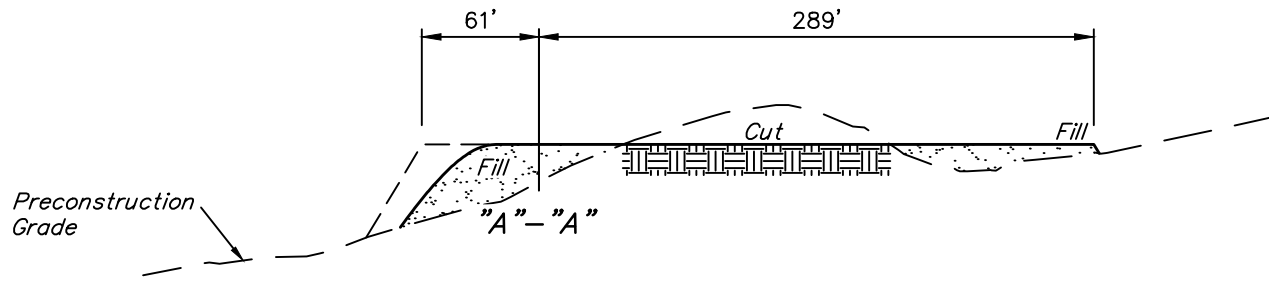
"D" - "D"



"C" - "C"



"B" - "B"



"A" - "A"

NOTE:
 Well positions & pad corners
 are calculated & not set on
 ground. Position to be staked
 & field verified at a later date.

APPROXIMATE EARTHWORK QUANTITIES	
(6") TOPSOIL STRIPPING	4,360 Cu. Yds.
REMAINING LOCATION	51,700 Cu. Yds.
TOTAL CUT	56,060 Cu. Yds.
FILL	51,700 Cu. Yds.
EXCESS MATERIAL	4,360 Cu. Yds.
TOPSOIL	4,360 Cu. Yds.
EXCESS UNBALANCE (After Interim Rehabilitation)	0 Cu. Yds.

APPROXIMATE SURFACE DISTURBANCE AREAS		
	DISTANCE	ACRES
WELL SITE DISTURBANCE	NA	±5.655
30' WIDE ROAD RE-ROUTE R-O-W DISTURBANCE	±883'	±0.608
30' WIDE PIPELINE R-O-W DISTURBANCE	±414'	±0.285
TOTAL SURFACE USE AREA		±6.548

REV: 5 12-07-17 M.D. (PAD & SHL CHANGE)

NOTES:
 • Fill quantity includes 5% for compaction.
 • Calculations based on 6" of topsoil stripping.
 • Cut/Fill slopes 1 1/2:1 (Typ.).

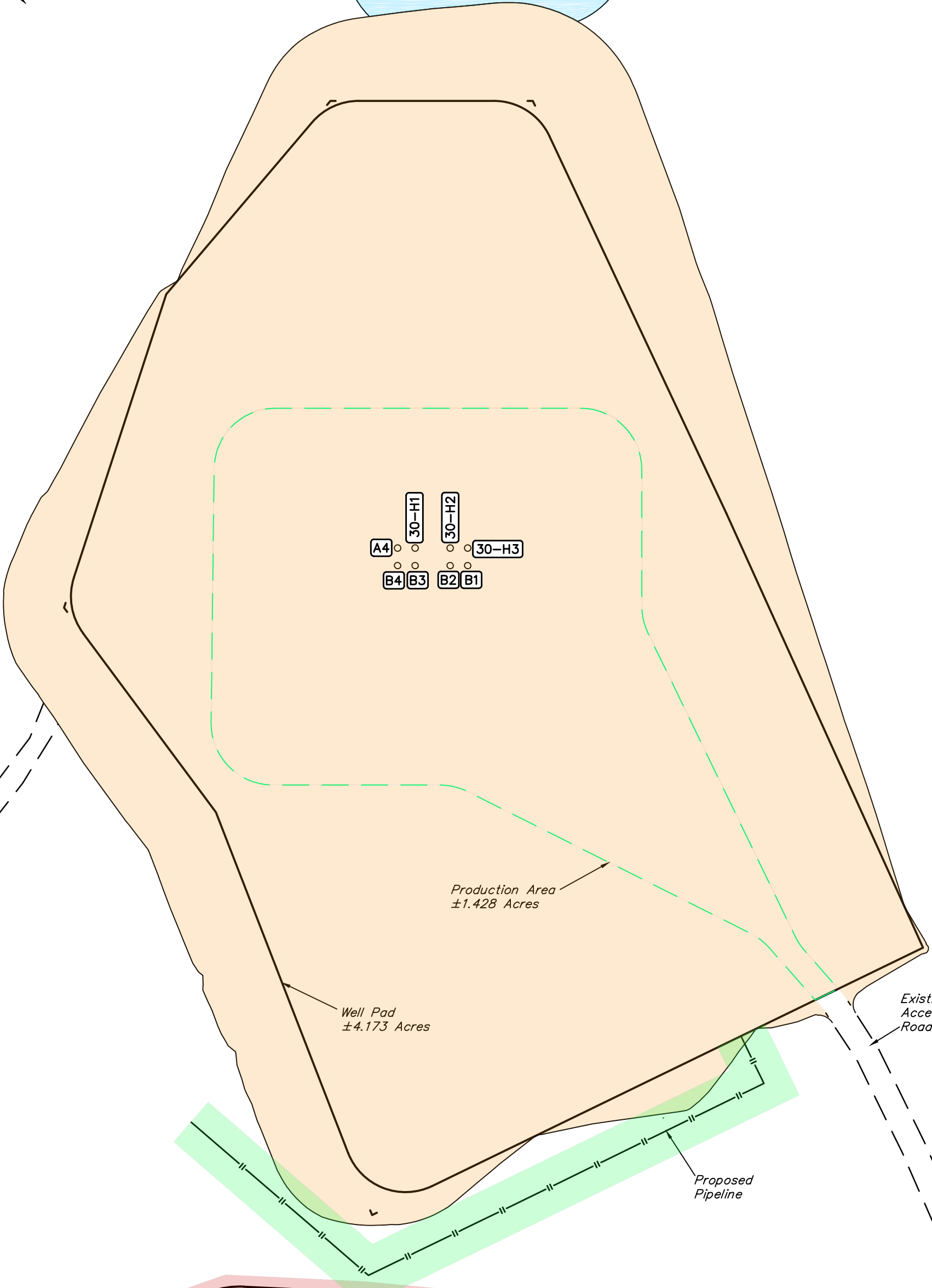
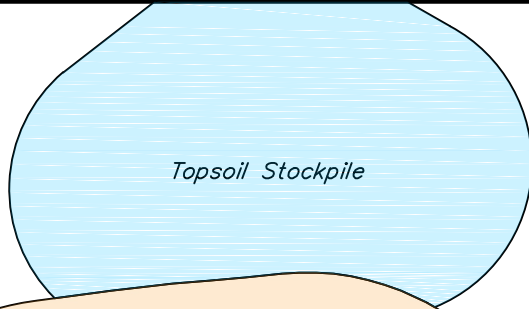
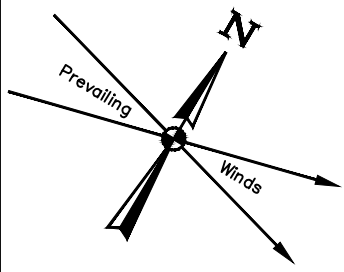
Gunnison Energy LLC

TRAIL GULCH UNIT 1090 30-H1 PAD
 SW 1/4 SE 1/4, SECTION 30, T10S, R90W, 6th P.M.
 GUNNISON COUNTY, COLORADO



UELS, LLC
 Corporate Office * 85 South 200 East
 Vernal, UT 84078 * (435) 789-1017

SURVEYED BY	MARTIN PIERCE	11-03-16	SCALE
DRAWN BY	C.D.L.	03-29-17	AS SHOWN
CONSTRUCTION LAYOUT CROSS SECTIONS			FIGURE #3



SURFACE USE DISTURBANCE SUMMARY (SUDS)			
	Length (ft)	Width (ft)	Approx. Acres of Disturbance
Well Pad (including cuts/fills)	N/A	N/A	±5.340
Topsoil Piles	N/A	N/A	±0.315
Proposed Road Re-Route	±883'	30'	±0.608
Proposed Pipeline	±414'	30'	±0.285
Total Acres of Disturbance			±6.548

REV: 4 12-07-17 M.D. (PAD & SHL CHANGE)

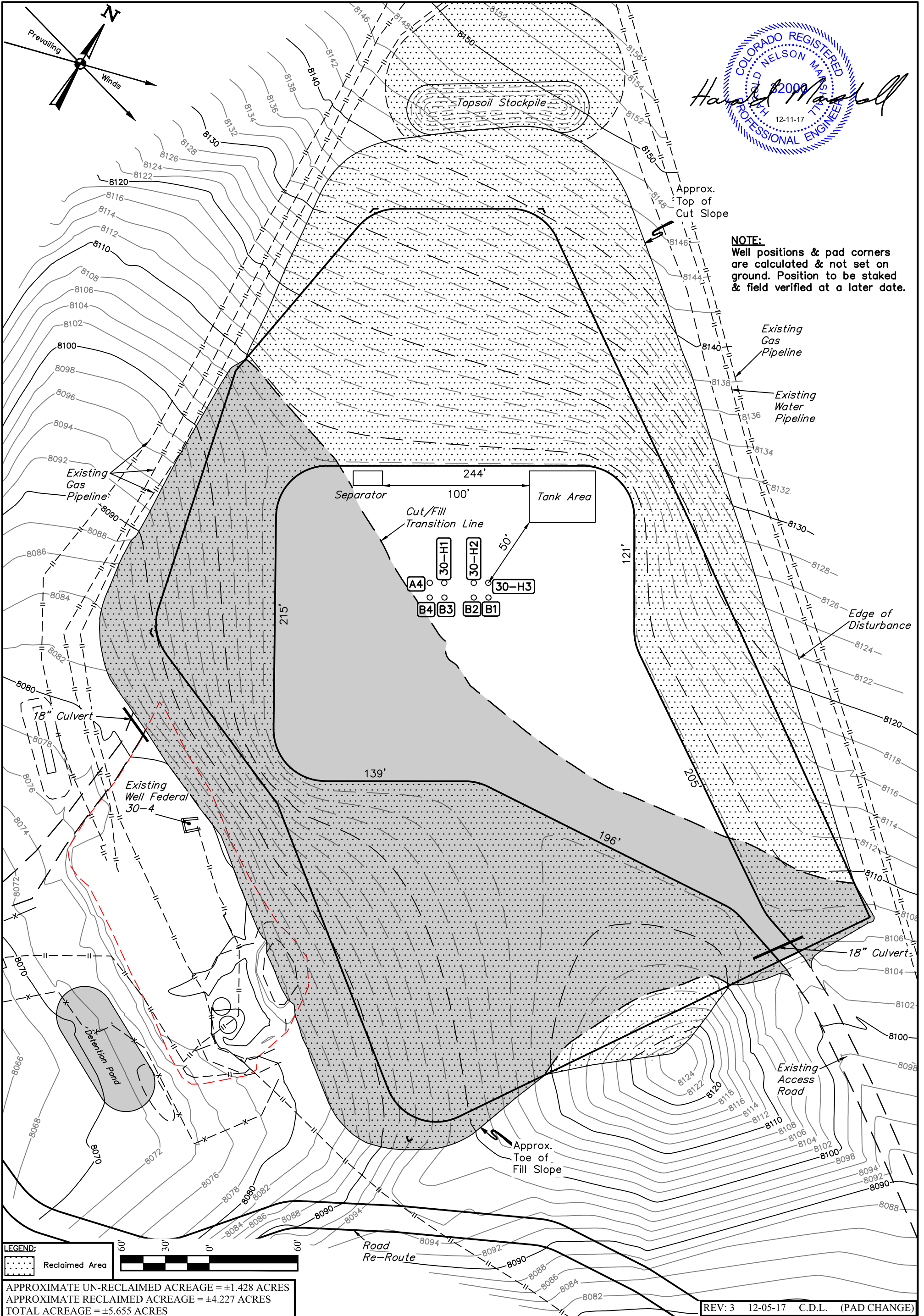
Gunnison Energy LLC

TRAIL GULCH UNIT 1090 30-H1 PAD
 SW 1/4 SE 1/4, SECTION 30, T10S, R90W, 6th P.M.
 GUNNISON COUNTY, COLORADO

SURVEYED BY	MARTIN PIERCE	11-03-16	SCALE
DRAWN BY	C.D.L.	03-29-17	1" = 60'
ACREAGES		EXHIBIT 1	



UELS, LLC
 Corporate Office * 85 South 200 East
 Vernal, UT 84078 * (435) 789-1017



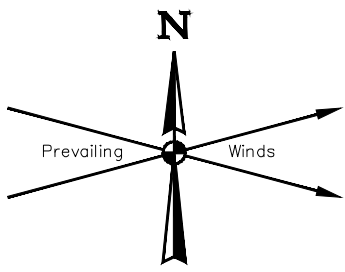
Harold Marshall
 22009
 12-11-17
 COLORADO REGISTERED PROFESSIONAL ENGINEER

NOTE:
 Well positions & pad corners are calculated & not set on ground. Position to be staked & field verified at a later date.

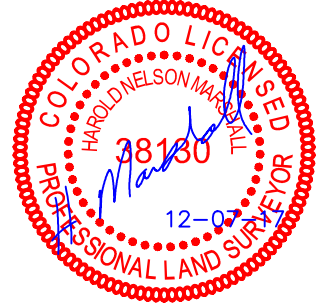
Gunnison Energy LLC

TRAIL GULCH UNIT 1090 30-H1 PAD
 SW 1/4 SE 1/4, SECTION 30, T10S, R90W, 6th P.M.
 GUNNISON COUNTY, COLORADO

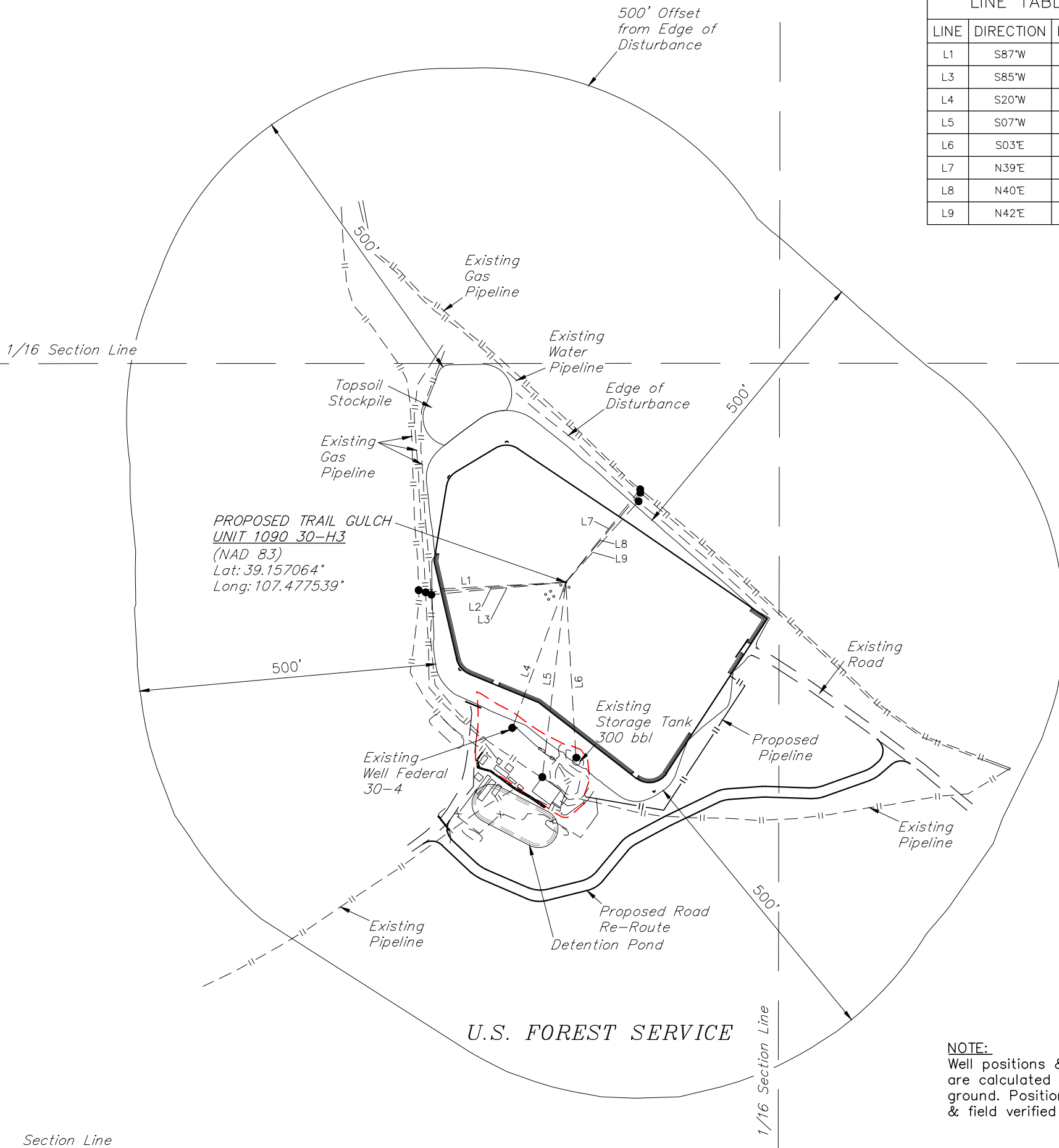
SURVEYED BY	MARTIN PIERCE	11-03-16	SCALE
DRAWN BY	C.D.L.	03-29-17	1" = 60'
INTERIM RECLAMATION PLAN			FIGURE #5



Sec. 30



LINE TABLE		
LINE	DIRECTION	LENGTH
L1	S87°W	249'
L3	S85°W	228'
L4	S20°W	262'
L5	S07°W	331'
L6	S03°E	296'
L7	N39°E	201'
L8	N40°E	197'
L9	N42°E	184'



NOTE:
Well positions & pad corners are calculated & not set on ground. Position to be staked & field verified at a later date.



REV: 3 12-07-17 M.D. (PAD & SHL CHANGE)

PLANT COMMUNITY

- DISTURBED GRASSLAND
- NATIVE GRASSLAND
- SHRUB LAND
- PLAINS RIPARIAN
- MOUNTAIN RIPARIAN
- FOREST LAND
- WETLANDS AQUATIC
- ALPINE
- OTHER (Describe): _____

CURRENT LAND USE

- CROP LAND: IRRIGATED DRY LAND IMPROVED PASTURE HAY MEADOW CRP
- NON-CROP LAND: RANGELAND TIMBER RECREATIONAL OTHER (Describe)
- SUBDIVIDED: INDUSTRIAL COMMERCIAL RESIDENTIAL _____

FUTURE LAND USE

- CROP LAND: IRRIGATED DRY LAND IMPROVED PASTURE HAY MEADOW CRP
- NON-CROP LAND: RANGELAND TIMBER RECREATIONAL OTHER (Describe)
- SUBDIVIDED: INDUSTRIAL COMMERCIAL RESIDENTIAL _____

Gunnison Energy LLC

TRAIL GULCH UNIT 1090 30-H1 PAD
SW 1/4 SE 1/4, SECTION 30, T10S, R90W, 6th P.M.
GUNNISON COUNTY, COLORADO

SURVEYED BY	MARTIN PIERCE	11-03-16	SCALE
DRAWN BY	C.D.L.	03-29-17	1" = 200'
LOCATION DRAWING		FIGURE #6	



UELS, LLC
Corporate Office * 85 South 200 East
Vernal, UT 84078 * (435) 789-1017

Gunnison Energy LLC

TRAIL GULCH UNIT 1090 30-H1 PAD
 SECTION 30, T10S, R90W, 6th P.M.
 GUNNISON COUNTY, COLORADO
 DATE: 03-29-17
 REV: 2 12-07-17 M.D. (SHL MOVE)

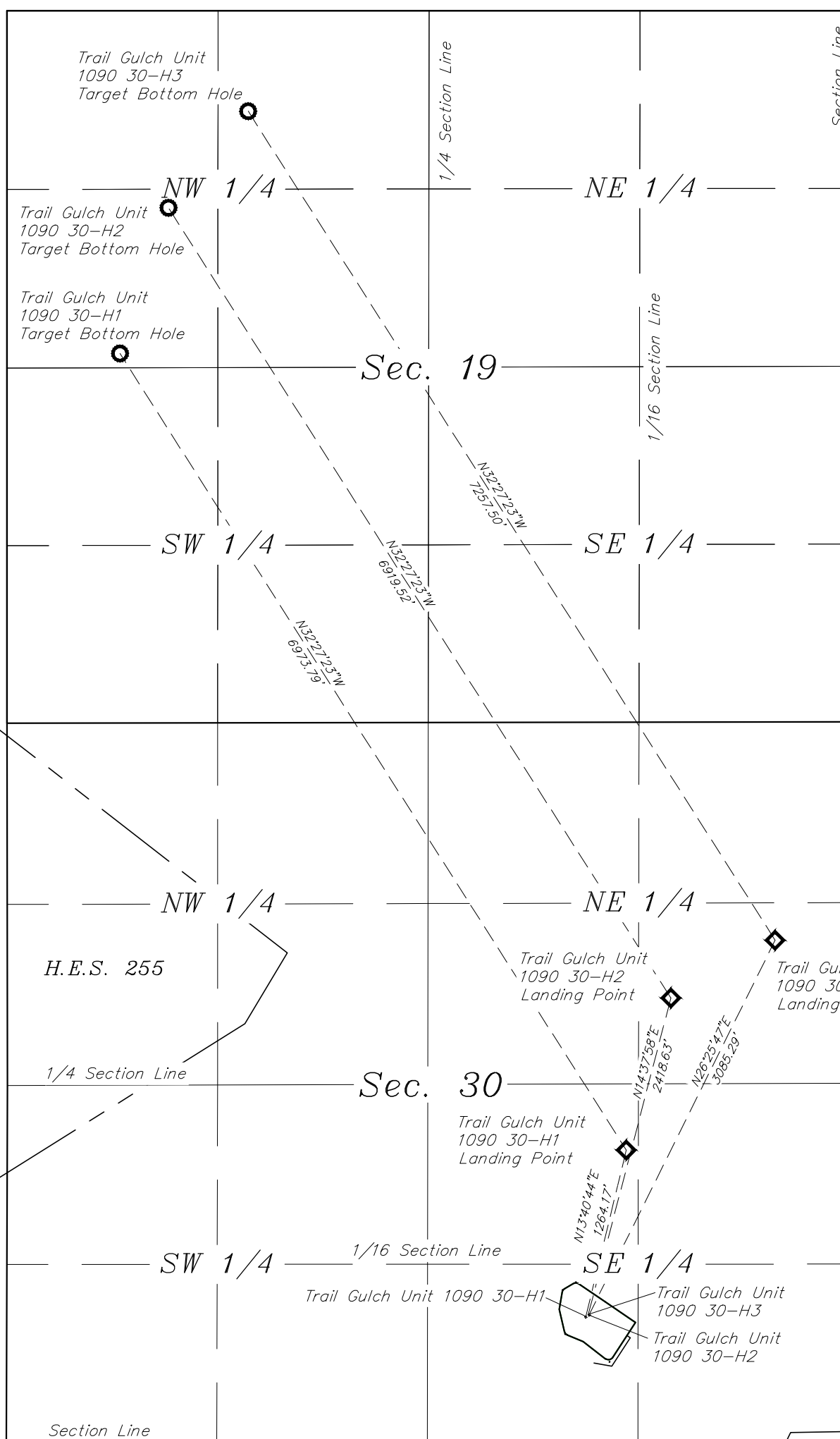
DISTANCES FROM WELLHEAD

WELL NAME	BUILDING		BUILDING UNIT		HIGH OCCU. BUILDING		D.O.A.A.		PUBLIC ROAD		ABOVE GROUND UTILITY		RAILROAD		PROPERTY LINE	
	DIRECTION	LENGTH	DIRECTION	LENGTH	DIRECTION	LENGTH	DIRECTION	LENGTH	DIRECTION	LENGTH	DIRECTION	LENGTH	DIRECTION	LENGTH	DIRECTION	LENGTH
TRAIL GULCH UNIT 1090 30-H1	OVER 1 MILE		OVER 1 MILE		OVER 1 MILE		OVER 1 MILE		OVER 1 MILE		OVER 1 MILE		OVER 1 MILE		SOUTH	946'
TRAIL GULCH UNIT 1090 30-H2	OVER 1 MILE		OVER 1 MILE		OVER 1 MILE		OVER 1 MILE		OVER 1 MILE		OVER 1 MILE		OVER 1 MILE		SOUTH	957'
TRAIL GULCH UNIT 1090 30-H3	OVER 1 MILE		OVER 1 MILE		OVER 1 MILE		OVER 1 MILE		OVER 1 MILE		OVER 1 MILE		OVER 1 MILE		SOUTH	962'

DISTANCES FROM PRODUCTION AREA

PRODUCTION FEATURE	BUILDING		BUILDING UNIT		HIGH OCCU. BUILDING		D.O.A.A.		PUBLIC ROAD		ABOVE GROUND UTILITY		RAILROAD		PROPERTY LINE (SEPARATOR)	
	DIRECTION	LENGTH	DIRECTION	LENGTH	DIRECTION	LENGTH	DIRECTION	LENGTH	DIRECTION	LENGTH	DIRECTION	LENGTH	DIRECTION	LENGTH	DIRECTION	LENGTH
PRODUCTION AREA	OVER 1 MILE		OVER 1 MILE		OVER 1 MILE		OVER 1 MILE		OVER 1 MILE		OVER 1 MILE		OVER 1 MILE		SOUTH	971'





H.E.S. 255

H.E.S. 269

NOTE:
Well positions & pad corners
are calculated & not set on
ground. Position to be staked
& field verified at a later date.

REV: 1 12-07-17 M.D. (SHL & PAD CHANGE)

Gunnison Energy LLC

TRAIL GULCH UNIT 1090 30-H1 PAD
SW 1/4 SE 1/4, SECTION 30, T10S, R90W, 6th P.M.
GUNNISON COUNTY, COLORADO

SURVEYED BY	BART HUNTING, F.R.	10-16-17	SCALE
DRAWN BY	M.D.	10-19-17	1" = 1000'
MULTI-WELL PLAN			FIGURE #7



UELS, LLC
Corporate Office * 85 South 200 East
Vernal, UT 84078 * (435) 789-1017

PROCEED IN A NORTHEASTERLY DIRECTION FROM RIFLE, COLORADO ALONG I-70 APPROXIMATELY 26.0 MILES TO THE JUNCTION OF THIS ROAD AND EXIT 116 TO THE SOUTHEAST; EXIT RIGHT AND PROCEED IN A SOUTHEASTERLY DIRECTION APPROXIMATELY 0.2 MILES TO THE JUNCTION OF THIS ROAD AND CO RD 82 TO THE NORTHEAST; TURN LEFT AND PROCEED IN A NORTHEASTERLY DIRECTION APPROXIMATELY 492' TO THE JUNCTION OF THIS ROAD AND 6th ST TO THE EAST; TURN RIGHT AND PROCEED IN AN EASTERLY DIRECTION APPROXIMATELY 420' TO THE JUNCTION OF THIS ROAD AND GRAND AVE TO THE SOUTHEAST; TURN RIGHT AND PROCEED IN A SOUTHEASTERLY, THEN SOUTHERLY DIRECTION APPROXIMATELY 1.4 MILES TO THE JUNCTION OF THIS ROAD AND CO RD 82 TO THE SOUTHEAST; PROCEED IN A SOUTHEASTERLY DIRECTION APPROXIMATELY 10.2 MILES TO THE JUNCTION OF THIS ROAD AND CO RD 133 TO THE SOUTH; TURN RIGHT AND PROCEED IN A SOUTHERLY, THEN SOUTHWESTERLY, THEN NORTHWESTERLY, THEN SOUTHWESTERLY DIRECTION APPROXIMATELY 32.3 MILES TO THE JUNCTION OF THIS ROAD AND CO RD 265 TO THE NORTHWEST; TURN RIGHT AND PROCEED IN A NORTHWESTERLY DIRECTION APPROXIMATELY 4.6 MILES TO THE JUNCTION OF THIS ROAD AND 851 TO THE NORTHWEST; TURN LEFT AND PROCEED IN A NORTHWESTERLY, THEN SOUTHWESTERLY DIRECTION APPROXIMATELY 0.3 MILES TO THE JUNCTION OF THIS ROAD AND CO RD 265 TO THE SOUTHWEST; PROCEED IN A SOUTHWESTERLY, THEN NORTHWESTERLY DIRECTION APPROXIMATELY 2.4 MILES TO THE JUNCTION OF THIS ROAD AND AN EXISTING ROAD TO THE NORTHWEST; TURN RIGHT AND PROCEED IN A NORTHEASTERLY DIRECTION APPROXIMATELY 1.6 MILES TO THE JUNCTION OF THIS ROAD AND AN EXISTING ROAD TO THE NORTHWEST; TURN LEFT AND PROCEED IN A NORTHWESTERLY, THEN NORTHERLY, THEN NORTHWESTERLY DIRECTION APPROXIMATELY 9,794' TO THE PROPOSED LOCATION.

TOTAL DISTANCE FROM RIFLE, COLORADO TO THE PROPOSED WELL LOCATION IS APPROXIMATELY 81.1 MILES.

REV: 2 10-18-17 Z.T. (ROAD CHANGE)

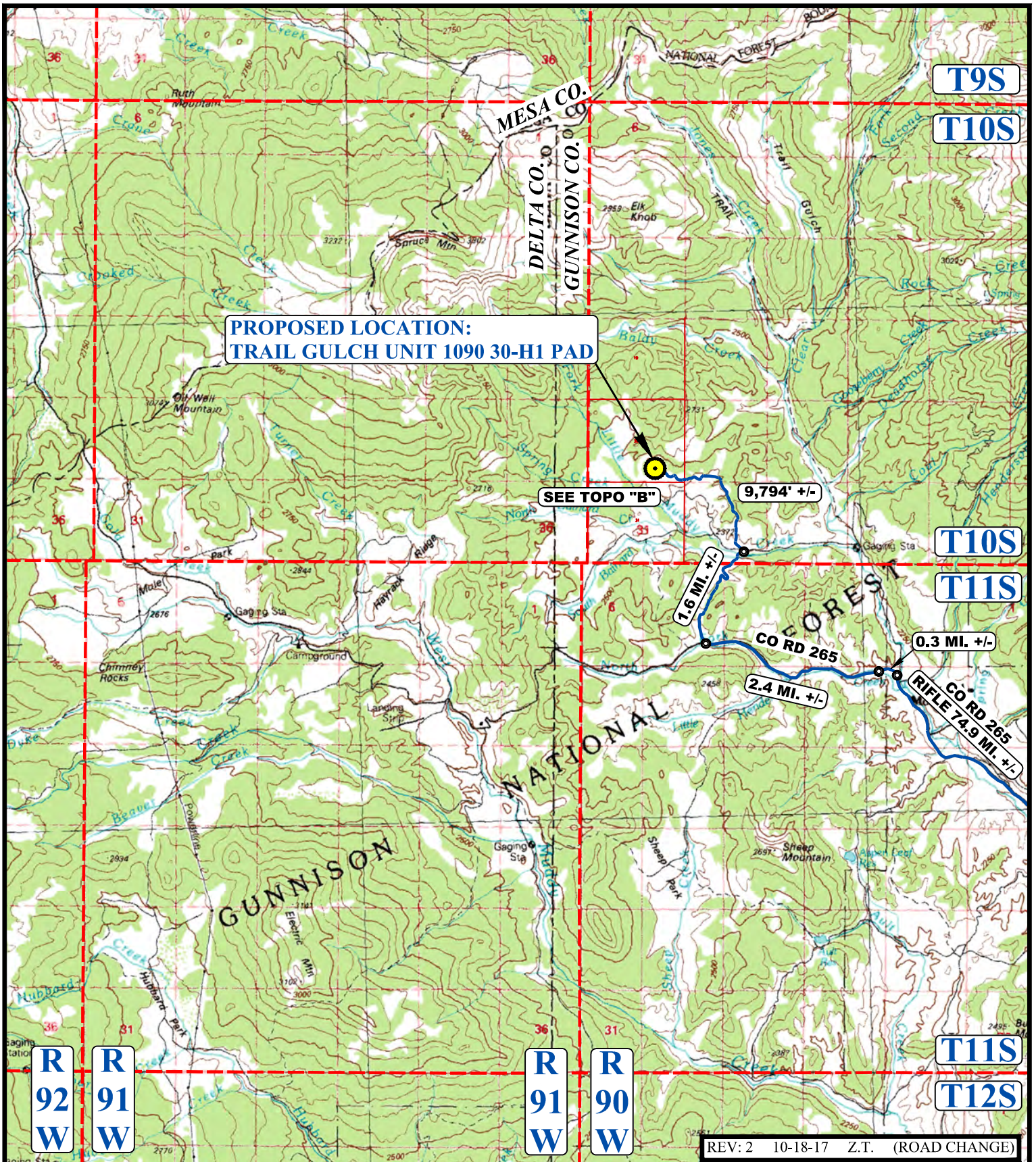
Gunnison Energy LLC

**TRAIL GULCH UNIT 1090 30-H1 PAD
SW 1/4 SE 1/4, SECTION 30, T10S, R90W, 6th P.M.
GUNNISON COUNTY, COLORADO**

SURVEYED BY	M.P.	11-03-16	
DRAWN BY	T.L.	03-29-17	
ROAD DESCRIPTION			



UELS, LLC
Corporate Office * 85 South 200 East
Vernal, UT 84078 * (435) 789-1017



**PROPOSED LOCATION:
TRAIL GULCH UNIT 1090 30-H1 PAD**

SEE TOPO "B"

9,794' +/-

1.6 MI. +/-

2.4 MI. +/-

0.3 MI. +/-

REV: 2 10-18-17 Z.T. (ROAD CHANGE)

LEGEND:

PROPOSED LOCATION



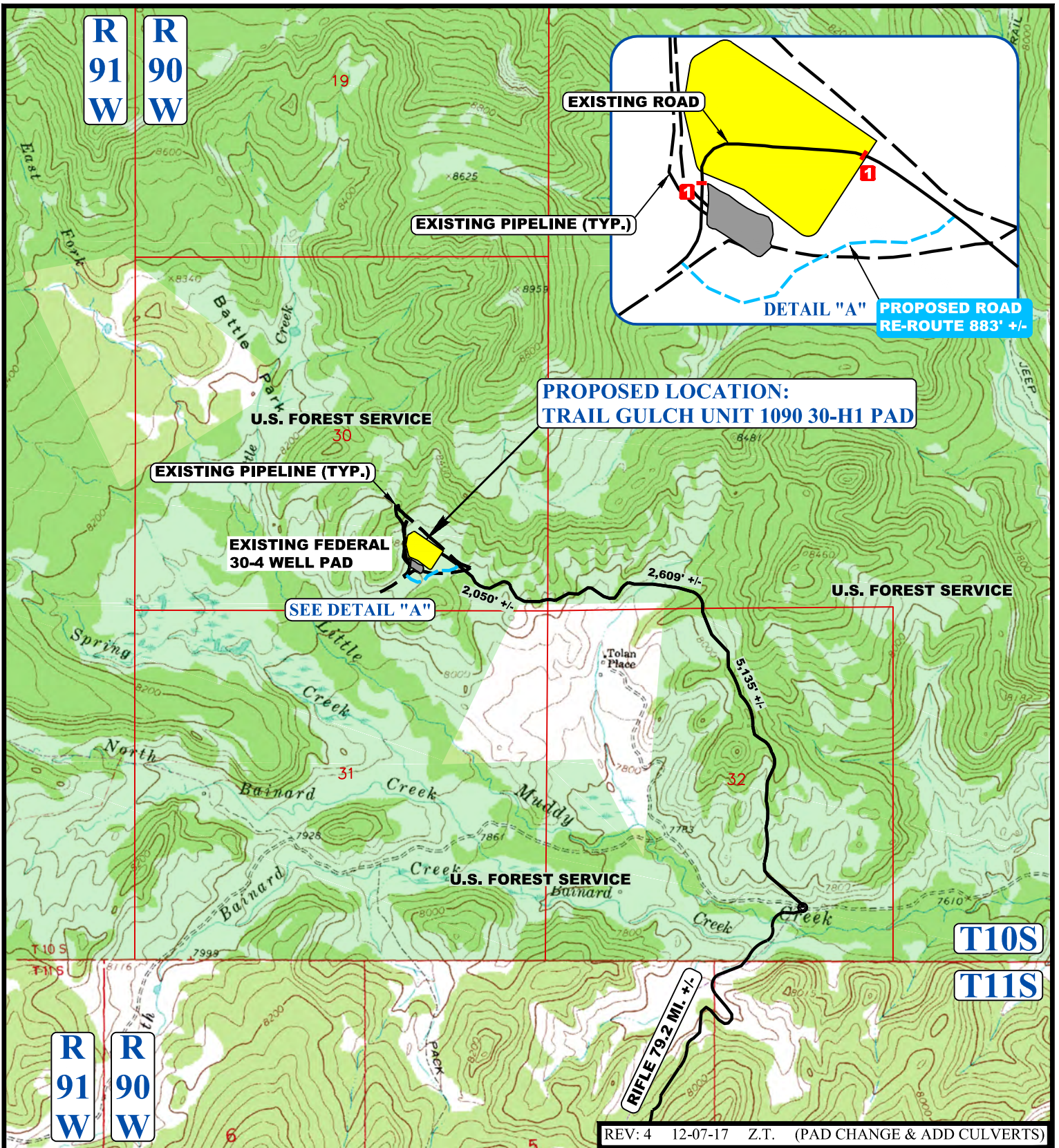
Gunnison Energy LLC

**TRAIL GULCH UNIT 1090 30-H1 PAD
SW 1/4 SE 1/4, SECTION 30, T10S, R90W, 6th P.M.
GUNNISON COUNTY, COLORADO**



UELS, LLC
Corporate Office * 85 South 200 East
Vernal, UT 84078 * (435) 789-1017

SURVEYED BY	M.P.	11-03-16	SCALE
DRAWN BY	T.L.	03-29-17	1 : 100,000
ACCESS ROAD MAP			TOPO A



REV: 4 12-07-17 Z.T. (PAD CHANGE & ADD CULVERTS)

NOTE: PARCEL DATA SHOWN HAS BEEN OBTAINED FROM VARIOUS SOURCES AND SHOULD BE USED FOR MAPPING, GRAPHIC AND PLANNING PURPOSES ONLY. NO WARRANTY IS MADE BY UINTAH ENGINEERING AND LAND SURVEYING (UELS) FOR ACCURACY OF THE PARCEL DATA.

LEGEND:

	EXISTING ROAD		INSTALL 18" CULVERT
	PROPOSED ROAD		
	PROPOSED ROAD RE-ROUTE		
	EXISTING PIPELINE		



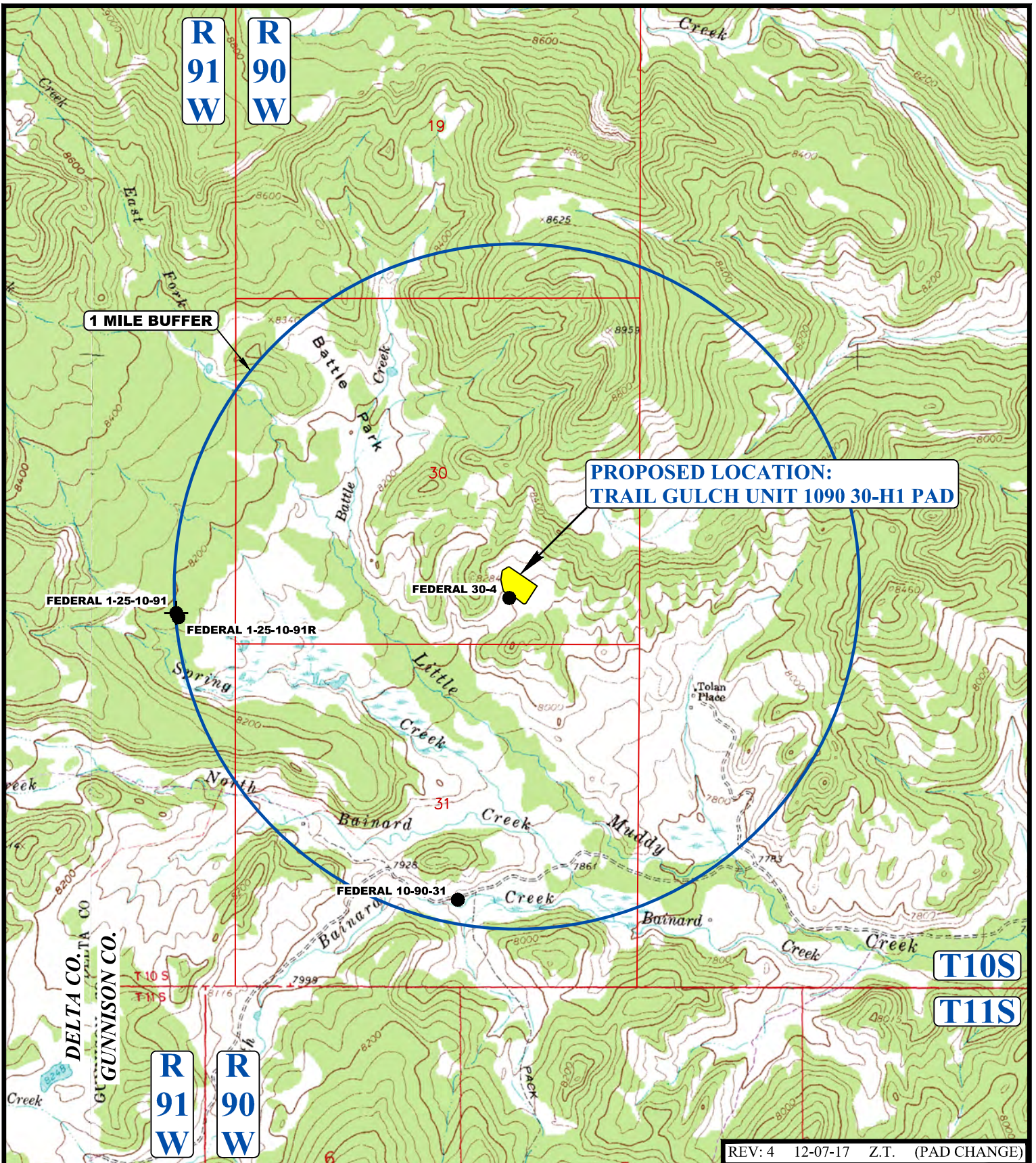
Gunnison Energy LLC

TRAIL GULCH UNIT 1090 30-H1 PAD
 SW 1/4 SE 1/4, SECTION 30, T10S, R90W, 6th P.M.
 GUNNISON COUNTY, COLORADO

SURVEYED BY	M.P.	11-03-16	SCALE
DRAWN BY	T.L.	11-09-16	1 : 24,000
ACCESS ROAD MAP		TOPO B	



UELS, LLC
 Corporate Office * 85 South 200 East
 Vernal, UT 84078 * (435) 789-1017



LEGEND:

- ◊ DISPOSAL WELLS
- PRODUCING WELLS
- SHUT IN WELLS
- ABANDONED WELLS
- TEMPORARILY ABANDONED
- ⊙ CONFIDENTIAL



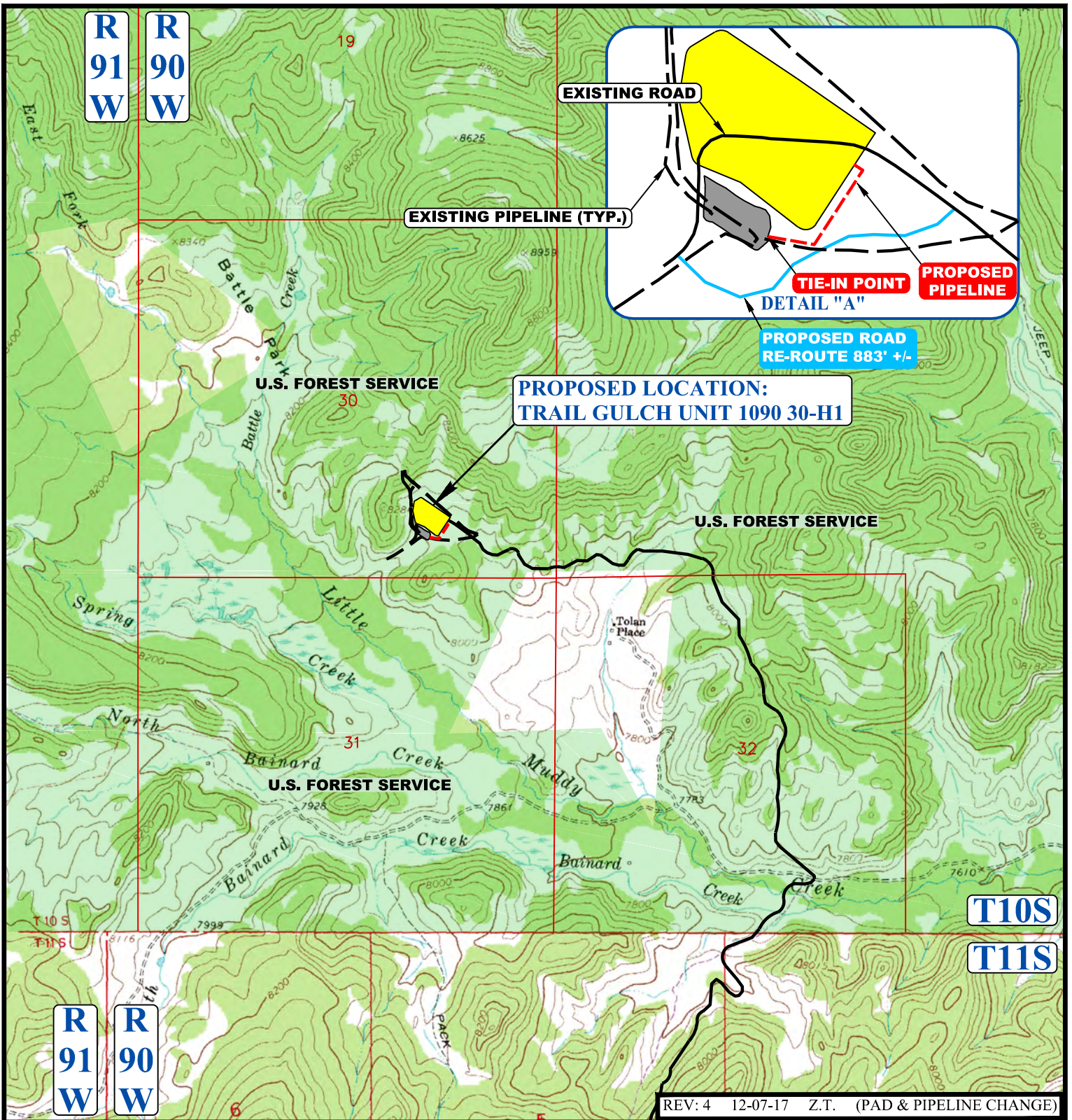
Gunnison Energy LLC

TRAIL GULCH UNIT 1090 30-H1 PAD
 SW 1/4 SE 1/4, SECTION 30, T10S, R90W, 6th P.M.
 GUNNISON COUNTY, COLORADO

SURVEYED BY	M.P.	11-03-16	SCALE
DRAWN BY	T.L.	03-29-17	1 : 24,000
WELL PROXIMITY MAP			TOPO C



UELS, LLC
 Corporate Office * 85 South 200 East
 Vernal, UT 84078 * (435) 789-1017



APPROXIMATE TOTAL PIPELINE DISTANCE = 414' +/-

NOTE: PARCEL DATA SHOWN HAS BEEN OBTAINED FROM VARIOUS SOURCES AND SHOULD BE USED FOR MAPPING, GRAPHIC AND PLANNING PURPOSES ONLY. NO WARRANTY IS MADE BY UINTAH ENGINEERING AND LAND SURVEYING (UELS) FOR ACCURACY OF THE PARCEL DATA.

LEGEND:

- EXISTING ROAD
- PROPOSED PIPELINE
- EXISTING PIPELINE
- PROPOSED ROAD RE-ROUTE



Gunnison Energy LLC

TRAIL GULCH UNIT 1090 30-H1
 SW 1/4 SE 1/4, SECTION 30, T10S, R90W, 6th P.M.
 GUNNISON COUNTY, COLORADO

SURVEYED BY	M.P.	11-03-16	SCALE
DRAWN BY	T.L.	03-29-17	1 : 24,000
PIPELINE MAP		TOPO D	



UELS, LLC
 Corporate Office * 85 South 200 East
 Vernal, UT 84078 * (435) 789-1017

R
90
W

30

1,000' OFFSET

PROPOSED LOCATION:
TRAIL GULCH UNIT 1090 30-H1 PAD

8284

EDGE OF DISTURBANCE

T10S





T11S

Little

8000

REV: 4 12-07-17 Z.T. (PAD CHANGE)

LEGEND:

-  EXISTING DRAINAGE
-  1000' OFFSET BOUNDARY
-  EDGE OF DISTURBANCE
-  FLOOD PLAINS



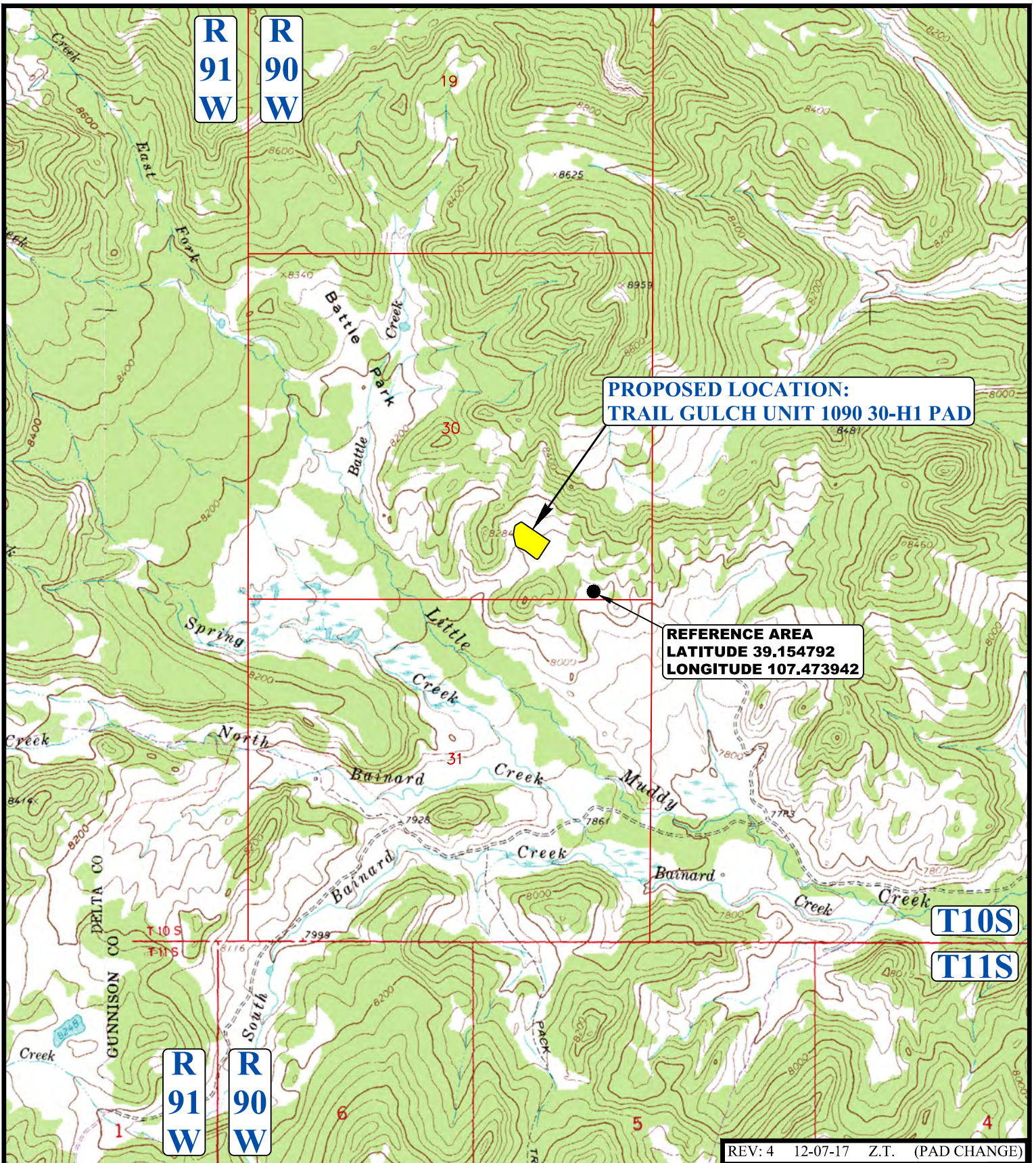
Gunnison Energy LLC

TRAIL GULCH UNIT 1090 30-H1 PAD
SW 1/4 SE 1/4, SECTION 30, T10S, R90W, 6th P.M.
GUNNISON COUNTY, COLORADO

SURVEYED BY	M.P.	11-03-16	SCALE
DRAWN BY	T.L.	03-29-17	1 : 6,000
HYDROLOGY MAP			TOPO W



UELS, LLC
Corporate Office * 85 South 200 East
Vernal, UT 84078 * (435) 789-1017



**PROPOSED LOCATION:
TRAIL GULCH UNIT 1090 30-H1 PAD**

**REFERENCE AREA
LATITUDE 39.154792
LONGITUDE 107.473942**

REV: 4 12-07-17 Z.T. (PAD CHANGE)

LEGEND:



Gunnison Energy LLC

**TRAIL GULCH UNIT 1090 30-H1 PAD
SW 1/4 SE 1/4, SECTION 30, T10S, R90W, 6th P.M.
GUNNISON COUNTY, COLORADO**

SURVEYED BY	M.P.	11-03-16	SCALE
DRAWN BY	T.L.	03-29-17	1 : 24,000
REFERENCE AREA MAP			REF TOPO



UELS, LLC
Corporate Office * 85 South 200 East
Vernal, UT 84078 * (435) 789-1017



PHOTO: VIEW OF REFERENCE AREA

CAMERA ANGLE: NORTHERLY



PHOTO: VIEW OF REFERENCE AREA

CAMERA ANGLE: EASTERLY

REV: 2 10-18-17 Z.T. (NAME CHANGE)

Gunnison Energy LLC

**TRAIL GULCH UNIT 1090 30-H1 PAD
SW 1/4 SE 1/4, SECTION 30, T10S, R90W, 6th P.M.
GUNNISON COUNTY, COLORADO**

UELS, LLC

Corporate Office * 85 South 200 East
Vernal, UT 84078 * (435) 789-1017

TAKEN BY	M.P.	11-03-16	
DRAWN BY	T.L.	03-29-17	
REFERENCE AREA PHOTOS			REF 1





PHOTO: VIEW OF REFERENCE AREA

CAMERA ANGLE: SOUTHERLY



PHOTO: VIEW OF REFERENCE AREA

CAMERA ANGLE: WESTERLY

REV: 2 10-18-17 Z.T. (NAME CHANGE)

Gunnison Energy LLC

**TRAIL GULCH UNIT 1090 30-H1 PAD
SW 1/4 SE 1/4, SECTION 30, T10S, R90W, 6th P.M.
GUNNISON COUNTY, COLORADO**

UELS, LLC

Corporate Office * 85 South 200 East
Vernal, UT 84078 * (435) 789-1017

TAKEN BY	M.P.	11-03-16	
DRAWN BY	T.L.	03-29-17	
REFERENCE AREA PHOTOS			REF 2

