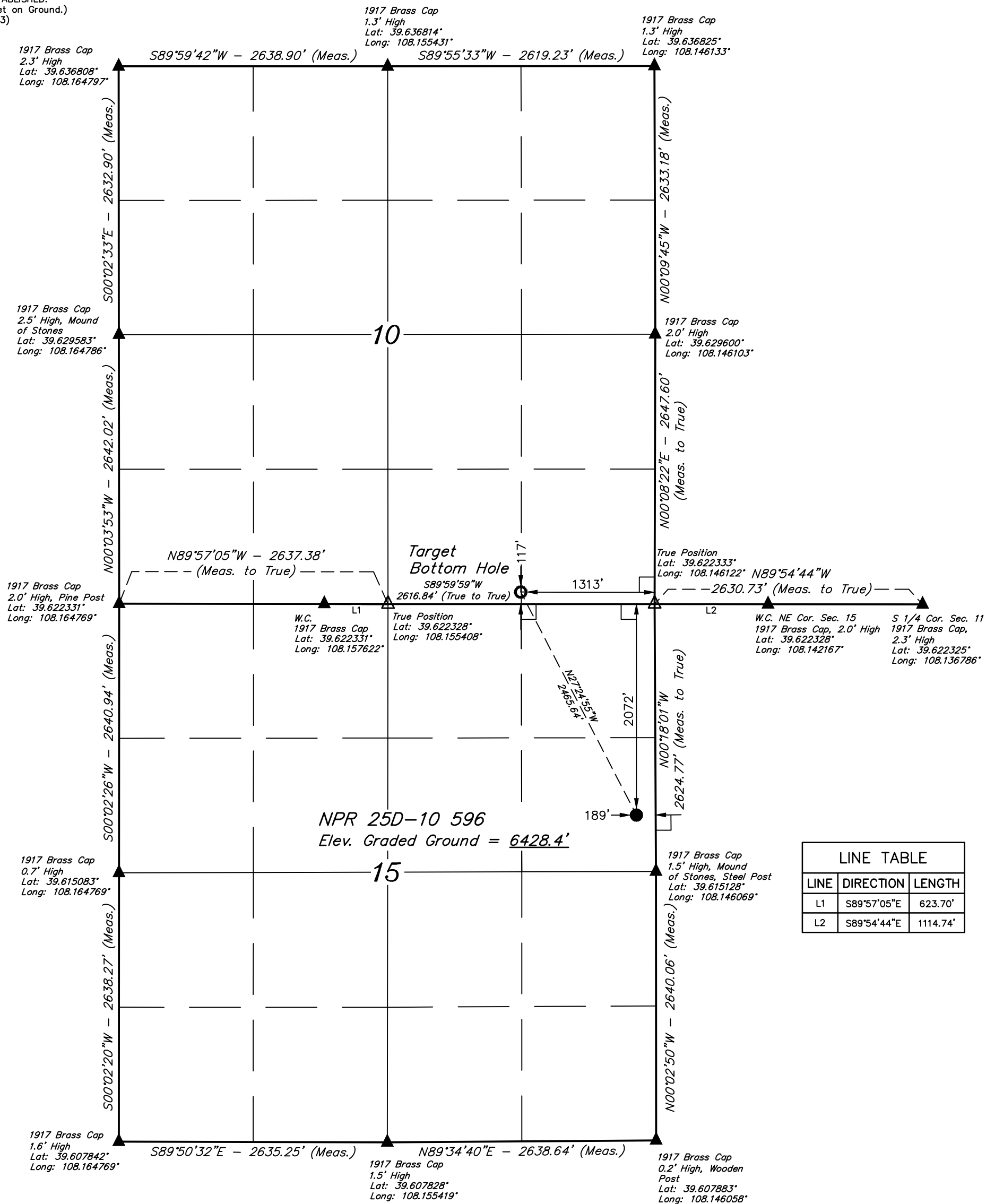


*T5S, R96W, 6th P.M.*

● = PROPOSED WELLHEAD.  
 ○ = TARGET BOTTOM HOLE.  
 ▲ = SECTION CORNERS  
 LOCATED. (NAD 83)  
 △ = SECTION CORNERS  
 RE-ESTABLISHED.  
 (Not Set on Ground.)  
 (NAD 83)



LINE TABLE		
LINE	DIRECTION	LENGTH
L1	S89°57'05"E	623.70'
L2	S89°54'44"E	1114.74'

**PDOP = 3.7**

<b>NAD 83 (SURFACE LOCATION)</b>	<b>NAD 83 (TARGET BOTTOM HOLE)</b>
LATITUDE = 39°36'59.93" (39.616647)	LATITUDE = 39°37'21.55" (39.622653)
LONGITUDE = 108°08'48.30" (108.146750)	LONGITUDE = 108°09'00.82" (108.150783)
<b>NAD 27 (SURFACE LOCATION)</b>	<b>NAD 27 (TARGET BOTTOM HOLE)</b>
LATITUDE = 39°37'00.01" (39.616669)	LATITUDE = 39°37'21.63" (39.622675)
LONGITUDE = 108°08'46.01" (108.146114)	LONGITUDE = 108°09'00.53" (108.150147)
<b>UTM NAD 27 (ZONE 12)</b>	<b>UTM NAD 27 (ZONE 12)</b>
N: 14399235.73 E: 2444184.90	N: 14401386.90 E: 2442979.70

### BASIS OF BEARINGS IS A G.P.S. OBSERVATION

SPOT ELEVATION AT THE NORTHWEST CORNER OF SECTION 30, T5S, R95W, 6th P.M., TAKEN FROM THE FORKED GULCH QUADRANGLE, GARFIELD COUNTY, COLORADO, 7.5 MINUTE QUAD. (TOPOGRAPHIC MAP) PUBLISHED BY THE UNITED STATES DEPARTMENT OF THE INTERIOR, GEOLOGICAL SURVEY. SAID ELEVATION IS MARKED AS BEING 5966 FEET.



**UELS, LLC**  
Corporate Office \* 85 South 200 East  
Vernal, UT 84078 \* (435) 789-1017



THIS IS TO CERTIFY THAT THE ABOVE PLAT WAS PREPARED AND  
LOCATION AS SHOWN WAS STAKED ON THE GROUND FROM FIELD NOTES  
OF ACTUAL SURVEYS MADE BY ME OR UNDER MY SUPERVISION AND THAT  
THE SAME ARE TRUE AND CORRECT TO THE BEST OF MY KNOWLEDGE AND  
BELIEF.

REGISTERED LAND SURVEYOR  
REGISTRATION NO. 78130  
STATE OF COLORADO

**NPR 25D-10 596**  
**SE 1/4 NE 1/4, SECTION 15, T5S, R96W, 6th P.M.**  
**GARFIELD COUNTY, COLORADO**

<b>SURVEYED BY</b>	BART HUNTING, J.F.	08-28-17	<b>SCALE</b>
<b>DRAWN BY</b>	M.D.	09-13-17	1" = 1000'

## WELL LOCATION PLAT