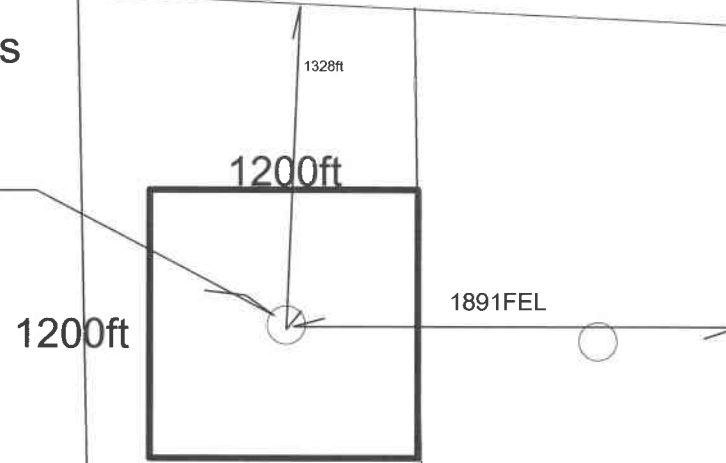


GMOC #1-25 Cowboys
1328FNL 1891FEL
25-5S-54W



33acre Unit is described as:

GMOC Cowboy 1-25 is located at:

1328'FNL, 1891FEL, and point of beginning

- Proceed 600ft North to north line of unit
- Proceed 600ft East to east line of unit
- Proceed 1200ft South to south line of unit
- Proceed 1200ft West to west line of unit
- Proceed 1200ft North to north line of unit
- Proceed 600ft East to complete the 33acre square

25

30

T5S - R54W

T5S - R53W

Grand Mesa Operating Company
COWBOYS 1-25
UNIT MAP

Author: sc	Date: 8 January, 2018
Scale: <scale>	