



# Kerr-McGee Oil & Gas Onshore LP

A subsidiary of Anadarko Petroleum Corporation

1099 18<sup>th</sup> Street  
Denver, CO 80202  
720-929-6000

January 2, 2018

Matt Lepore  
Director, Colorado Oil and Gas Conservation Commission  
Department of Natural Resources  
The Chancery Building  
1120 Lincoln Street, Suite 801  
Denver, CO 80203

Re: **30 Day Certification Letter - 318A.e**  
ENGLISH FARMS 8-8HZ (Doc No. 401496259)  
Township 1 North, Range 65 West  
Section 8: SWSE  
Unit Acreage: 440 Acres  
Unit Spacing: 01N-65W SEC 8: SESW;  
01N-65W SEC 17: E2W2;  
01N-65W SEC 20: E2W2;  
01N-65W SEC 29: E2NW  
Weld County, Colorado

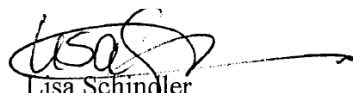
Dear Director Lepore:

Kerr McGee Oil and Gas Onshore LP ("KMG") hereby certifies that KMG owns one hundred percent (100%) of the leasehold interest in the mineral rights in the proposed spacing unit. KMG hereby respectfully requests approval of this boundary well.

If you have any questions or issues regarding this permit, please contact me at (720) 929-3091.

Sincerely,

**Kerr-McGee Oil and Gas Onshore LP**

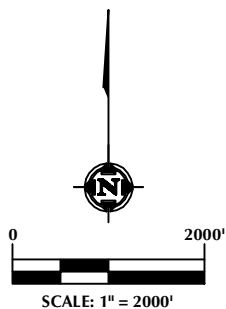
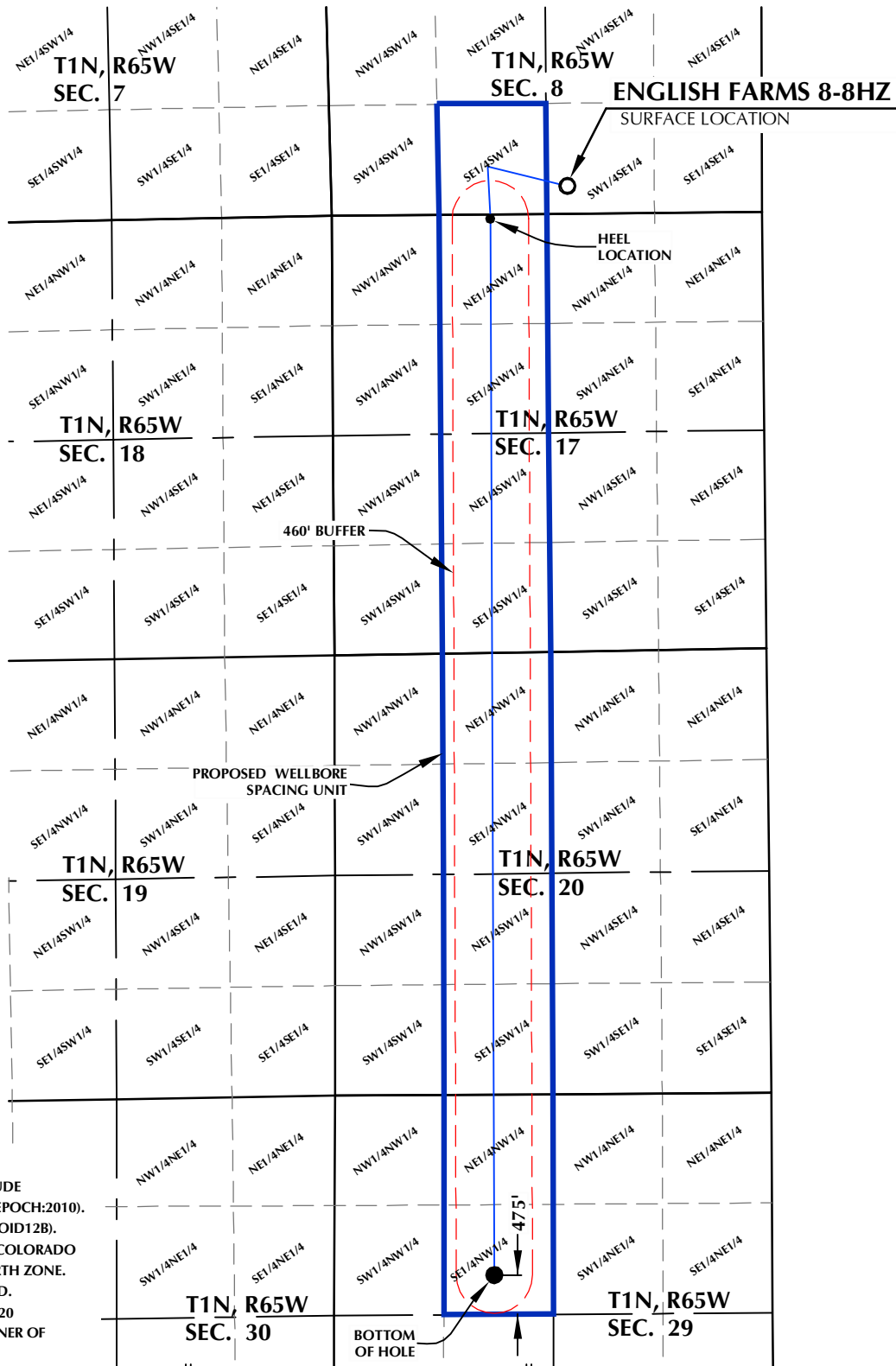
  
Lisa Schindler  
Sr. Regulatory Analyst

Enclosure

DISTANCE FROM COMPLETED  
PORTION OF WELLBORE TO  
NEAREST UNIT BOUNDARY= 475'

# ENGLISH FARMS 8-8HZ WELLBORE SPACING UNIT

SURFACE LOCATION: NAD 83  
GROUND ELEVATION= 4945.3'  
LATITUDE= 40.059680°  
LONGITUDE= -104.686865°  
LATITUDE= 40°03'34.850"  
LONGITUDE= -104°41'12.714"  
HEEL LOCATION: NAD 83  
LATITUDE= 40.058619°  
LONGITUDE= -104.690202°  
LATITUDE= 40°03'31.028"  
LONGITUDE= -104°41'24.727"  
BOTTOM HOLE LOCATION: NAD 83  
LATITUDE= 40.023661°  
LONGITUDE= -104.690444°  
LATITUDE= 40°01'25.180"  
LONGITUDE= -104°41'25.598"



## NOTES:

1. DRAWING LATITUDE AND LONGITUDE COORDINATES ARE NAD 83 (2011)(EPOCH:2010).
2. ELEVATION BASED ON NAVD88 (GEOID12B).
3. BASIS OF BEARING DERIVED FROM COLORADO COORDINATE SYSTEM OF 1983 NORTH ZONE.
4. ALL MEASURED DISTANCES ARE GRID. COMBINED SCALE FACTOR: .99972920 CALCULATED FROM THE S. 1/4 CORNER OF SECTION 8, T1N, R65W.

## WELL PAD - ENGLISH FARMS 8-10HZ

ENGLISH FARMS 8-8HZ  
WELLBORE SPACING UNIT  
338' FSL & 2345' FEL SWSE (SURFACE)  
LOCATED IN SECTION 8  
50' FNL & 1915' FWL NENW (HEEL)  
LOCATED IN SECTION 17  
2177' FNL & 1929' FWL SENW (BOTTOM)  
LOCATED IN SECTION 29  
T1N, R65W, 6TH P.M.  
WELD COUNTY, COLORADO

**Kerr-McGee Oil &  
Gas Onshore L.P.**  
1099 18th Street  
Denver, Colorado 80202



## CONSULTING, LLC

SHERIDAN OFFICE  
1095 Saberton Avenue  
Sheridan, Wyoming 82801  
Phone 307-674-0609

LOVELAND OFFICE  
1635 Foxtrail Drive, Suite 204  
Loveland, Colorado 80538  
Phone 970-776-4331

DRAFTED BY:	LMO	CHECKED BY:	RKF
DATE DRAFTED:	11/21/17	DATE SURVEYED:	7/24/17
REVISED:		FILE NAME:	17-119