

LEGEND

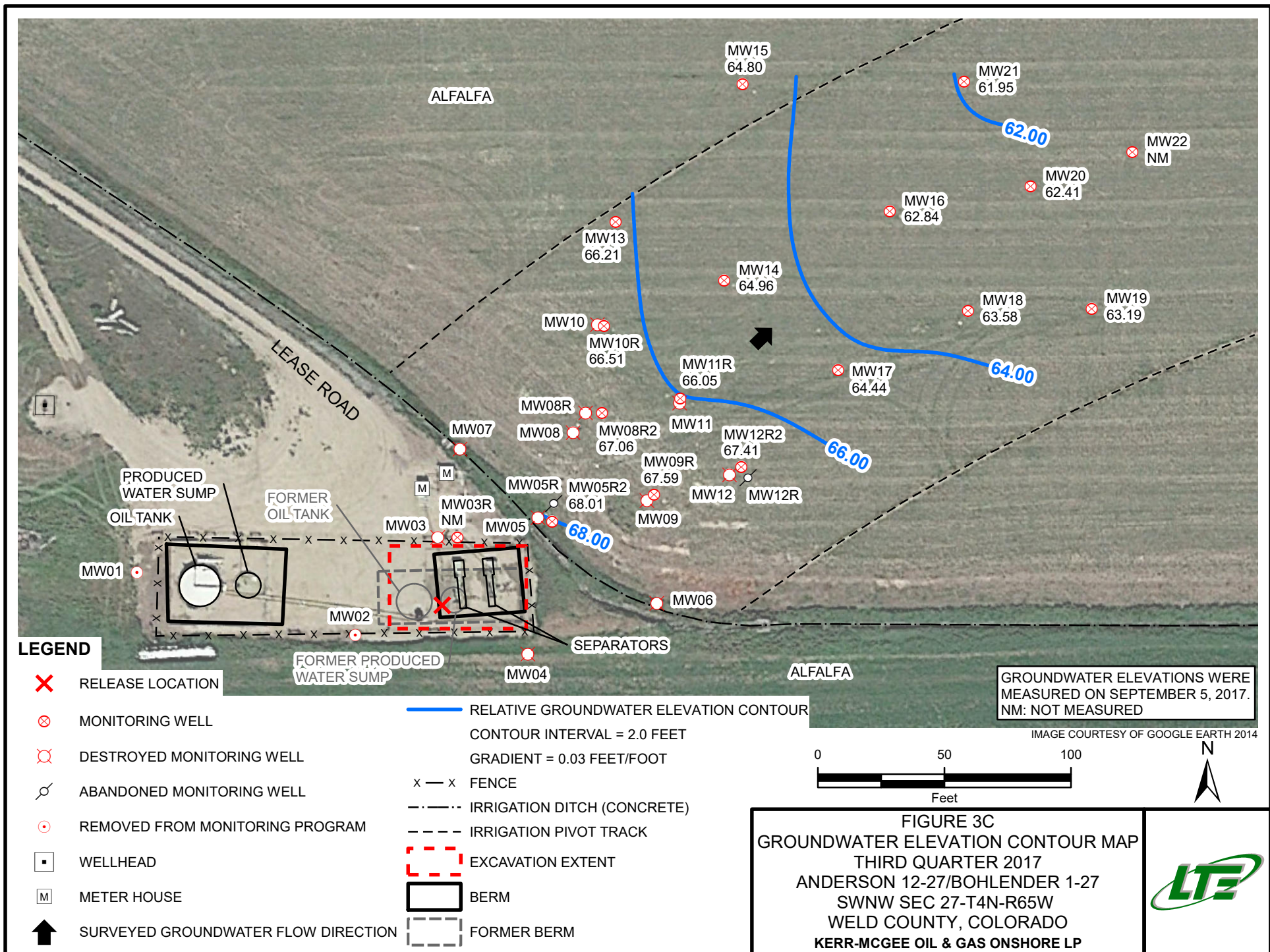
- X RELEASE LOCATION
- ⊗ MONITORING WELL
- ⊗ DESTROYED MONITORING WELL
- ⊗ ABANDONED MONITORING WELL
- ⊗ REMOVED FROM MONITORING PROGRAM
- WELLHEAD
- METER HOUSE
- ↑ SURVEYED GROUNDWATER FLOW DIRECTION
- RELATIVE GROUNDWATER ELEVATION CONTOUR
- CONTOUR INTERVAL = 2.0 FEET
- GRADIENT = 0.03 FEET/FOOT
- x — x FENCE
- — — IRRIGATION DITCH (CONCRETE)
- - - IRRIGATION PIVOT TRACK
- EXCAVATION EXTENT
- BERM
- FORMER BERM

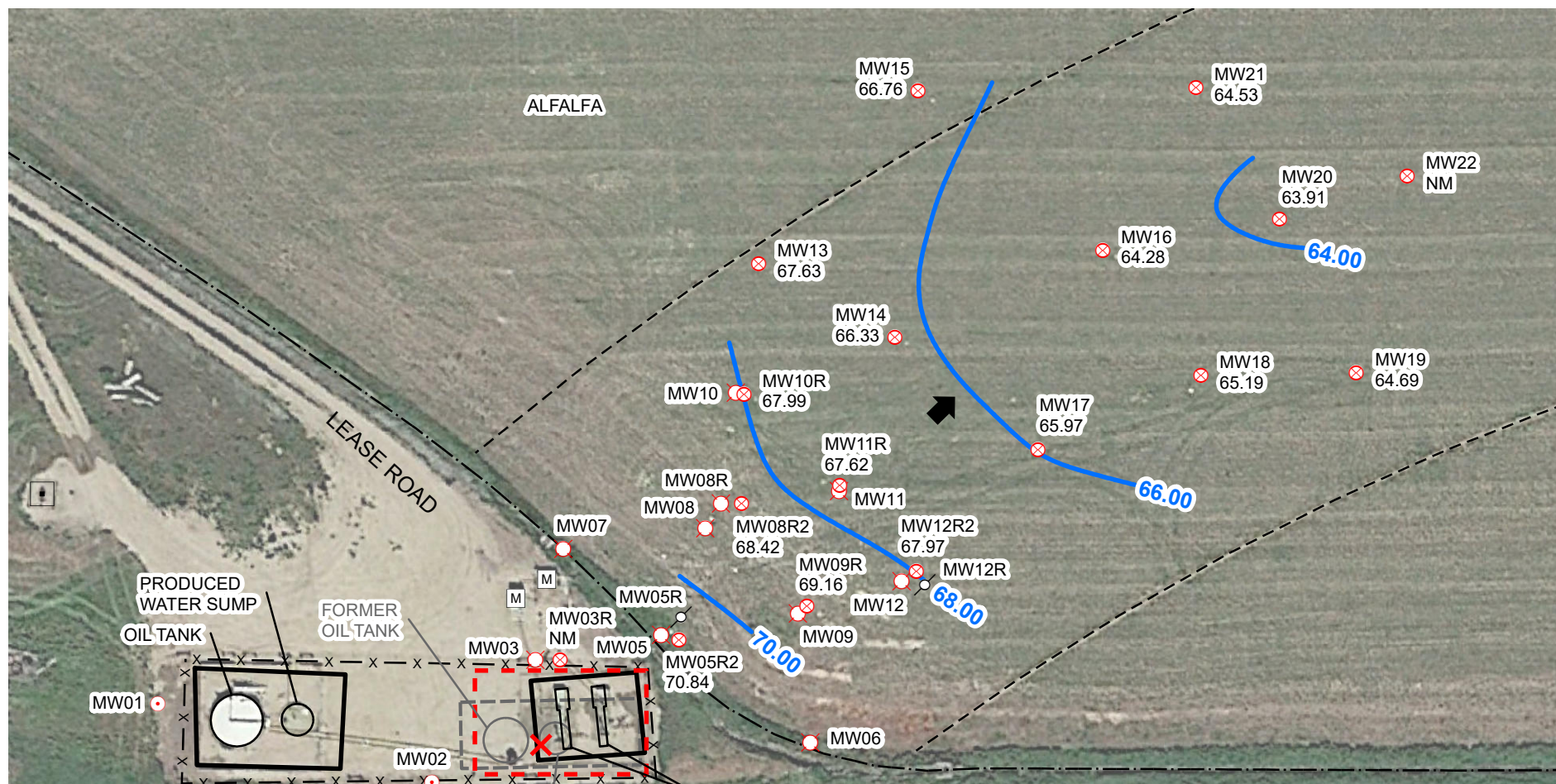
GROUNDWATER ELEVATIONS WERE MEASURED ON JUNE 21, 2017.
NM: NOT MEASURED



FIGURE 3B
GROUNDWATER ELEVATION CONTOUR MAP
 SECOND QUARTER 2017
 ANDERSON 12-27/BOHLENDER 1-27
 SWNW SEC 27-T4N-R65W
 WELD COUNTY, COLORADO
KERR-MCGEE OIL & GAS ONSHORE LP







LEGEND

- X RELEASE LOCATION
- ⊗ MONITORING WELL
- ⊗ DESTROYED MONITORING WELL
- ⊗ ABANDONED MONITORING WELL
- ⊙ REMOVED FROM MONITORING PROGRAM
- WELLHEAD
- M METER HOUSE
- ↑ SURVEYED GROUNDWATER FLOW DIRECTION
- RELATIVE GROUNDWATER ELEVATION CONTOUR
- CONTOUR INTERVAL = 2.0 FEET
- GRADIENT = 0.03 FEET/FOOT
- x — x FENCE
- — — — IRRIGATION DITCH (CONCRETE)
- - - - IRRIGATION PIVOT TRACK
- EXCAVATION EXTENT
- BERM
- FORMER BERM

GROUNDWATER ELEVATIONS WERE MEASURED ON DECEMBER 4, 2017.
NM: NOT MEASURED

IMAGE COURTESY OF GOOGLE EARTH 2014

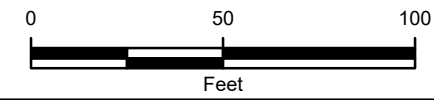


FIGURE 3D
GROUNDWATER ELEVATION CONTOUR MAP
FOURTH QUARTER 2017
ANDERSON 12-27/BOHLENDER 1-27
SWNW SEC 27-T4N-R65W
WELD COUNTY, COLORADO
KERR-MCGEE OIL & GAS ONSHORE LP

