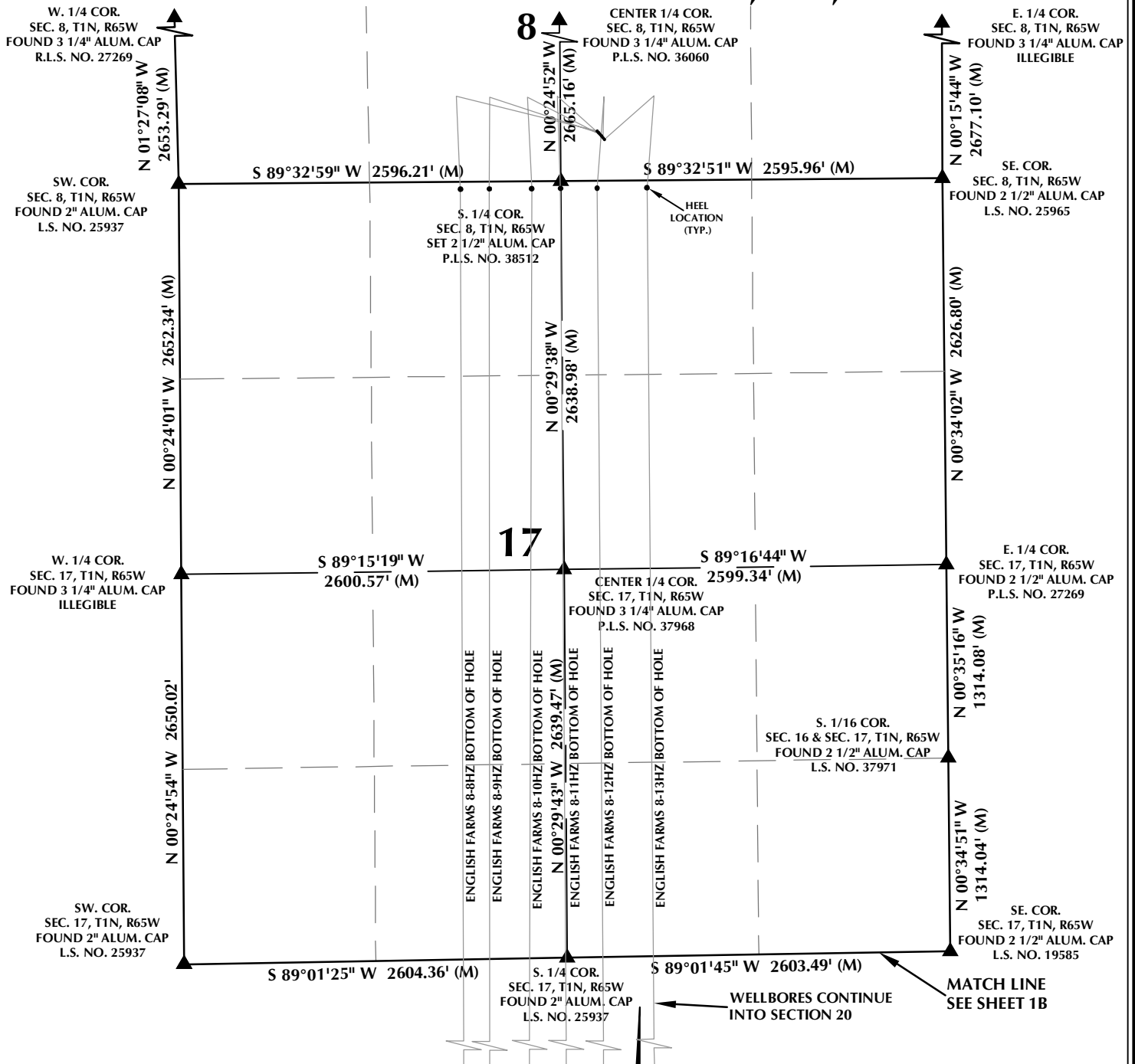


MULTI-WELL PLAN SECTIONS 8 & 17, T1N, R65W



WELL NOTES:

ENGLISH FARMS 8-8HZ
 SURFACE: 338' FSL, 2345' FEL (SEC. 8)
 BOTTOM HOLE: 2177' FNL, 1929' FWL (SEC. 29)

ENGLISH FARMS 8-9HZ
 SURFACE: 326' FSL, 2335' FEL (SEC. 8)
 BOTTOM HOLE: 2183' FNL, 2084' FWL (SEC. 29)

ENGLISH FARMS 8-10HZ
 SURFACE: 315' FSL, 2326' FEL (SEC. 8)
 BOTTOM HOLE: 2183' FNL, 2334' FWL (SEC. 29)

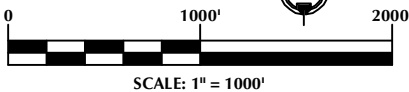
ENGLISH FARMS 8-11HZ
 SURFACE: 303' FSL, 2316' FEL (SEC. 8)
 BOTTOM HOLE: 2181' FNL, 2635' FEL (SEC. 29)

ENGLISH FARMS 8-12HZ
 SURFACE: 292' FSL, 2306' FEL (SEC. 8)
 BOTTOM HOLE: 2179' FNL, 2378' FEL (SEC. 29)

ENGLISH FARMS 8-13HZ
 SURFACE: 280' FSL, 2297' FEL (SEC. 8)
 BOTTOM HOLE: 2181' FNL, 2025' FEL (SEC. 29)

NOTES:

- ▲ INDICATES SECTION CORNER.
- INDICATES CALCULATED CORNER.
- BASIS OF BEARING DERIVED FROM COLORADO COORDINATE SYSTEM OF 1983 NORTH ZONE.
- ALL MEASURED DISTANCES ARE GRID.
- COMBINED SCALE FACTOR: .99972920 CALCULATED FROM THE S. 1/4 CORNER OF SECTION 8, T1N, R65W.
- WELL FOOTAGES ARE MEASURED AT RIGHT ANGLES TO THE SECTION LINES.



WELL PAD - ENGLISH FARMS 8-10HZ

MULTI-WELL PLAN
 ENGLISH FARMS 8-8HZ, ENGLISH FARMS 8-9HZ,
 ENGLISH FARMS 8-10HZ, ENGLISH FARMS 8-11HZ,
 ENGLISH FARMS 8-12HZ & ENGLISH FARMS 8-13HZ
 LOCATED IN SECTIONS 17, 20 & 29
 T1N, R65W, 6TH P.M.
 WELD COUNTY, COLORADO

**Kerr-McGee Oil &
 Gas Onshore L.P.**
 1099 18th Street
 Denver, Colorado 80202



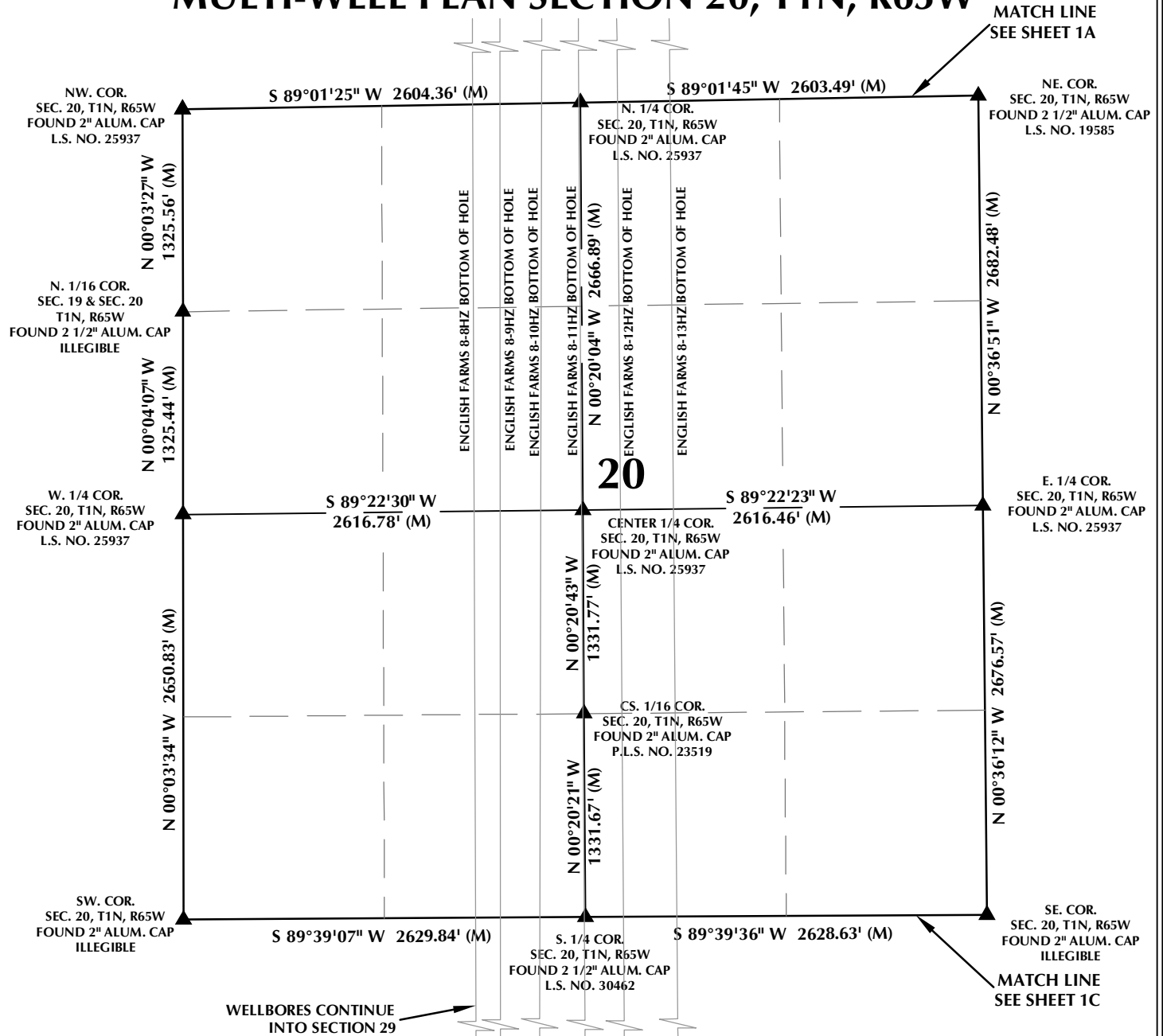
CONSULTING, LLC

SHERIDAN OFFICE
 1095 Saberton Avenue
 Sheridan, Wyoming 82801
 Phone 307-674-0609

LOVELAND OFFICE
 1635 Foxtrail Drive, Suite 204
 Loveland, Colorado 80538
 Phone 970-776-4331

DRAFTED BY:	LMO	CHECKED BY:	RKF	SHEET NO:
DATE DRAFTED:	11/21/17	DATE SURVEYED:	7/24/17	1A
REVISED:		FILE NAME:	17-119	1A OF 1

MULTI-WELL PLAN SECTION 20, T1N, R65W



WELL NOTES:

ENGLISH FARMS 8-8HZ
SURFACE: 338' FSL, 2345' FEL (SEC. 8)
BOTTOM HOLE: 2177' FNL, 1929' FWL (SEC. 29)

ENGLISH FARMS 8-9HZ
SURFACE: 326' FSL, 2335' FEL (SEC. 8)
BOTTOM HOLE: 2183' FNL, 2084' FWL (SEC. 29)

ENGLISH FARMS 8-10HZ
SURFACE: 315' FSL, 2326' FEL (SEC. 8)
BOTTOM HOLE: 2183' FNL, 2334' FWL (SEC. 29)

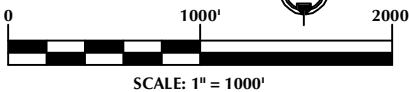
ENGLISH FARMS 8-11HZ
SURFACE: 303' FSL, 2316' FEL (SEC. 8)
BOTTOM HOLE: 2181' FNL, 2635' FEL (SEC. 29)

ENGLISH FARMS 8-12HZ
SURFACE: 292' FSL, 2306' FEL (SEC. 8)
BOTTOM HOLE: 2179' FNL, 2378' FEL (SEC. 29)

ENGLISH FARMS 8-13HZ
SURFACE: 280' FSL, 2297' FEL (SEC. 8)
BOTTOM HOLE: 2181' FNL, 2025' FEL (SEC. 29)

NOTES:

- ▲ INDICATES SECTION CORNER.
- INDICATES CALCULATED CORNER.
- BASIS OF BEARING DERIVED FROM COLORADO COORDINATE SYSTEM OF 1983 NORTH ZONE.
- ALL MEASURED DISTANCES ARE GRID.
- COMBINED SCALE FACTOR: .99972920 CALCULATED FROM THE S. 1/4 CORNER OF SECTION 8, T1N, R65W.
- WELL FOOTAGES ARE MEASURED AT RIGHT ANGLES TO THE SECTION LINES.



WELL PAD - ENGLISH FARMS 8-10HZ

MULTI-WELL PLAN
ENGLISH FARMS 8-8HZ, ENGLISH FARMS 8-9HZ,
ENGLISH FARMS 8-10HZ, ENGLISH FARMS 8-11HZ,
ENGLISH FARMS 8-12HZ & ENGLISH FARMS 8-13HZ
LOCATED IN SECTIONS 17, 20 & 29
T1N, R65W, 6TH P.M.
WELD COUNTY, COLORADO

**Kerr-McGee Oil &
Gas Onshore L.P.**
1099 18th Street
Denver, Colorado 80202



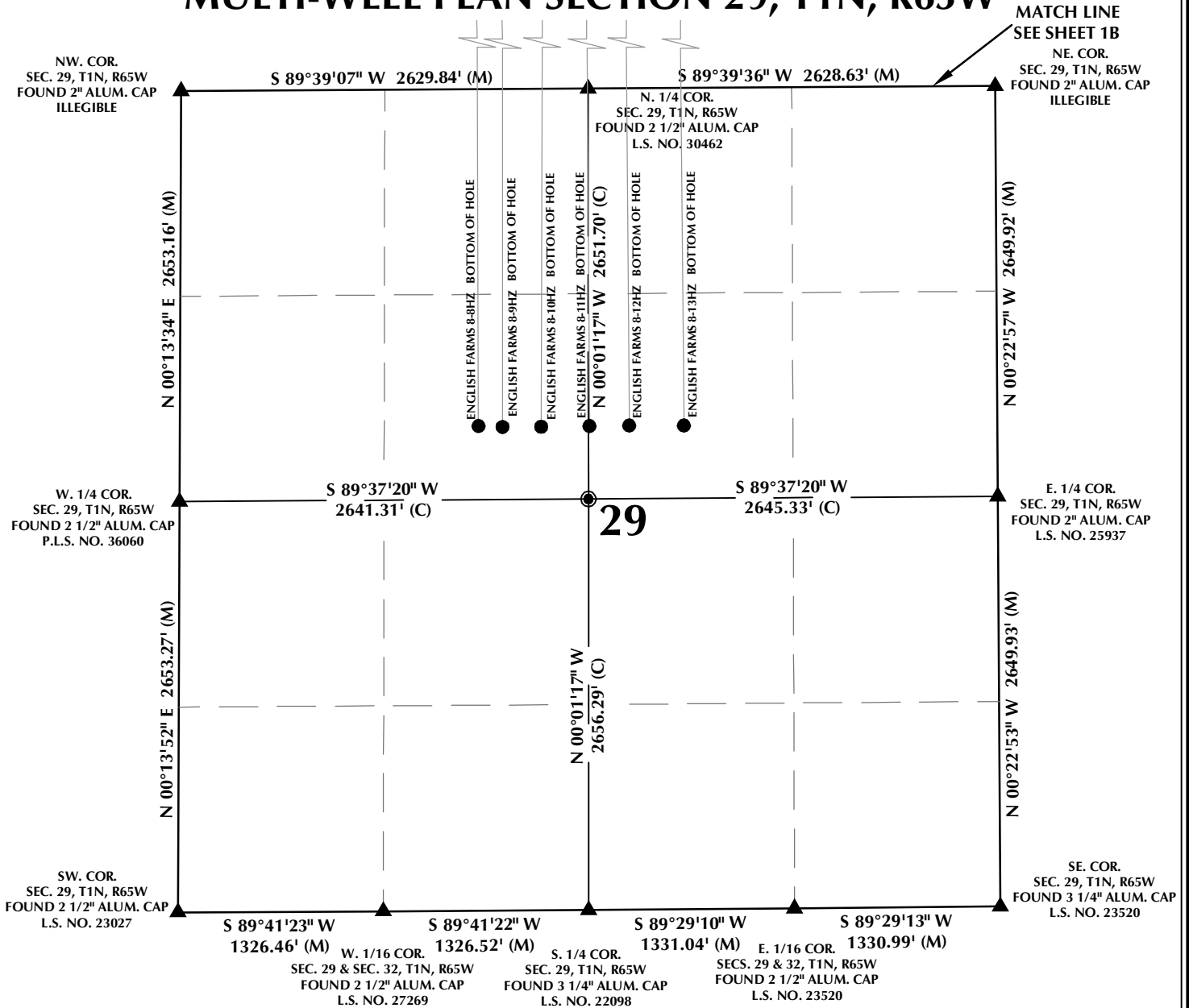
CONSULTING, LLC

SHERIDAN OFFICE
1095 Saberton Avenue
Sheridan, Wyoming 82801
Phone 307-674-0609

LOVELAND OFFICE
1635 Foxtrail Drive, Suite 204
Loveland, Colorado 80538
Phone 970-776-4331

DRAFTED BY:	LMO	CHECKED BY:	RKF	SHEET NO:
DATE DRAFTED:	11/21/17	DATE SURVEYED:	7/24/17	1B
REVISED:		FILE NAME:	17-119	1B OF 1

MULTI-WELL PLAN SECTION 29, T1N, R65W



WELL NOTES:

ENGLISH FARMS 8-8HZ
SURFACE: 338' FSL, 2345' FEL (SEC. 8)
BOTTOM HOLE: 2177' FNL, 1929' FWL (SEC. 29)

ENGLISH FARMS 8-9HZ
SURFACE: 326' FSL, 2335' FEL (SEC. 8)
BOTTOM HOLE: 2183' FNL, 2084' FWL (SEC. 29)

ENGLISH FARMS 8-10HZ
SURFACE: 315' FSL, 2326' FEL (SEC. 8)
BOTTOM HOLE: 2183' FNL, 2334' FWL (SEC. 29)

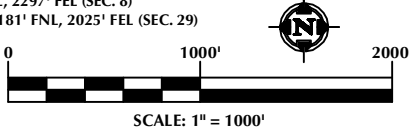
ENGLISH FARMS 8-11HZ
SURFACE: 303' FSL, 2316' FEL (SEC. 8)
BOTTOM HOLE: 2181' FNL, 2635' FEL (SEC. 29)

ENGLISH FARMS 8-12HZ
SURFACE: 292' FSL, 2306' FEL (SEC. 8)
BOTTOM HOLE: 2179' FNL, 2378' FEL (SEC. 29)

ENGLISH FARMS 8-13HZ
SURFACE: 280' FSL, 2297' FEL (SEC. 8)
BOTTOM HOLE: 2181' FNL, 2025' FEL (SEC. 29)

NOTES:

- ▲ INDICATES SECTION CORNER.
- INDICATES CALCULATED CORNER.
- BASIS OF BEARING DERIVED FROM COLORADO COORDINATE SYSTEM OF 1983 NORTH ZONE.
- ALL MEASURED DISTANCES ARE GRID.
- COMBINED SCALE FACTOR: .99972920 CALCULATED FROM THE S. 1/4 CORNER OF SECTION 8, T1N, R65W.
- WELL FOOTAGES ARE MEASURED AT RIGHT ANGLES TO THE SECTION LINES.



WELL PAD - ENGLISH FARMS 8-10HZ

MULTI-WELL PLAN
ENGLISH FARMS 8-8HZ, ENGLISH FARMS 8-9HZ,
ENGLISH FARMS 8-10HZ, ENGLISH FARMS 8-11HZ,
ENGLISH FARMS 8-12HZ & ENGLISH FARMS 8-13HZ
LOCATED IN SECTIONS 17, 20 & 29
T1N, R65W, 6TH P.M.
WELD COUNTY, COLORADO

**Kerr-McGee Oil &
Gas Onshore L.P.**
1099 18th Street
Denver, Colorado 80202



CONSULTING, LLC

SHERIDAN OFFICE
1095 Saberton Avenue
Sheridan, Wyoming 82801
Phone 307-674-0609

LOVELAND OFFICE
1635 Foxtrail Drive, Suite 204
Loveland, Colorado 80538
Phone 970-776-4331

DRAFTED BY:	LMO	CHECKED BY:	RKF	SHEET NO:
DATE DRAFTED:	11/21/17	DATE SURVEYED:	7/24/17	1C
REVISED:		FILE NAME:	17-119	1C OF 1