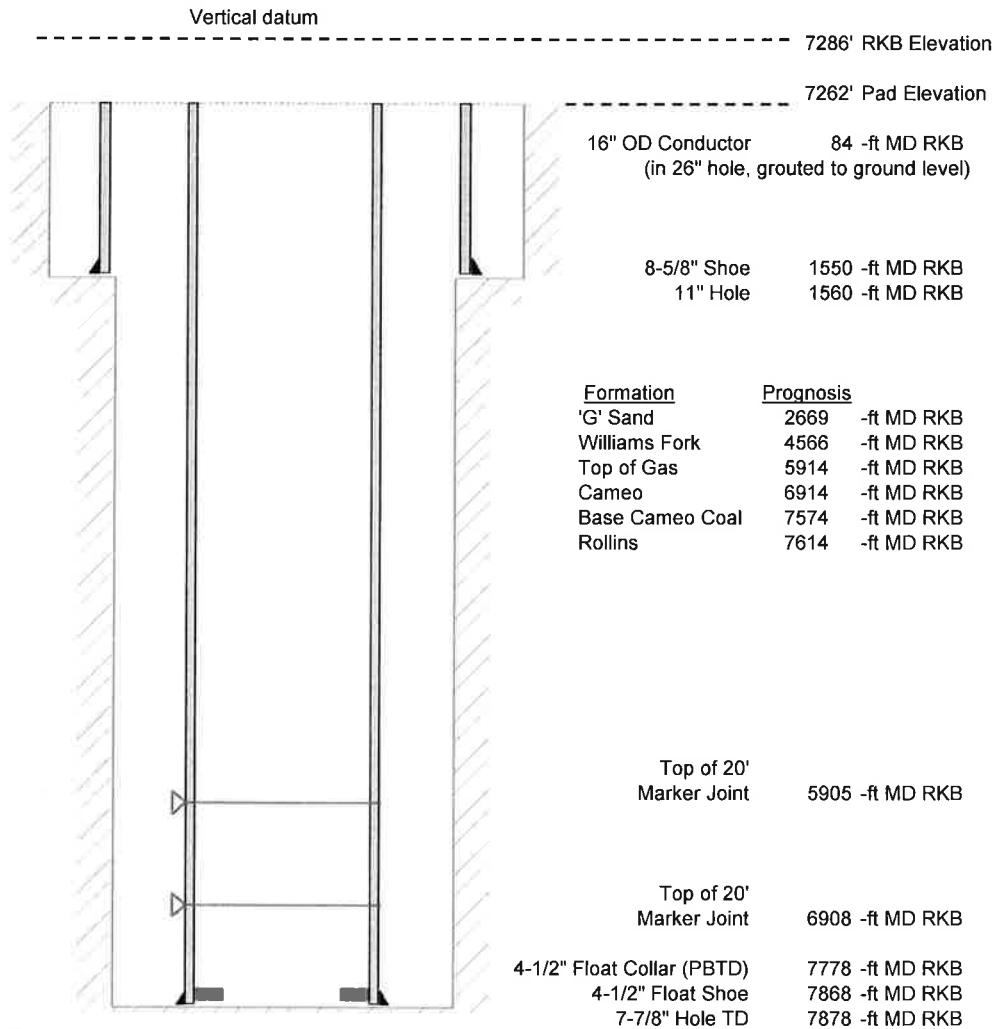


Laramie Energy, LLC
 Bruton 19-04W
 Slot A-10
 H&P 290 (24-ft KB)

API # : 077-10437-00
 SE/4 NW/4 S19/T9S/R93W/6th PM
 Mesa County, CO
 Date of diagram : 9/8/2017



Cementing details

| 8-5/8" 24# J55 STC Surface Csg | Lead | Tail |
|--------------------------------|------|------|
| Density (ppg) | 12.0 | 12.5 |
| Volume (sx) | 190 | 124 |
| Yield (cf/sx) | 2.52 | 2.22 |
| Top (ft RKB) | 24 | 1024 |
| Bottom (ft RKB) | 1024 | 1550 |
| Returns (full or partial) | full | full |

| 4-1/2" 11.6# L-80 LTC Prod Csg | Lead | Tail |
|--------------------------------|------|------|
| Density (ppg) | 12.7 | 13.5 |
| Volume (sx) | 805 | 402 |
| Yield (cf/sx) | 1.97 | 1.90 |
| Est Top (ft RKB) | 1026 | 5714 |
| Est Bottom (ft RKB) | 5714 | 7868 |
| Returns (full or partial) | full | full |

| Displacement |
|--------------|
| 8.3 ppg |
| 121 bbls |

Other Remarks : Surface-26 bbls cement to surface
 Production-30 bbls spacer to surface