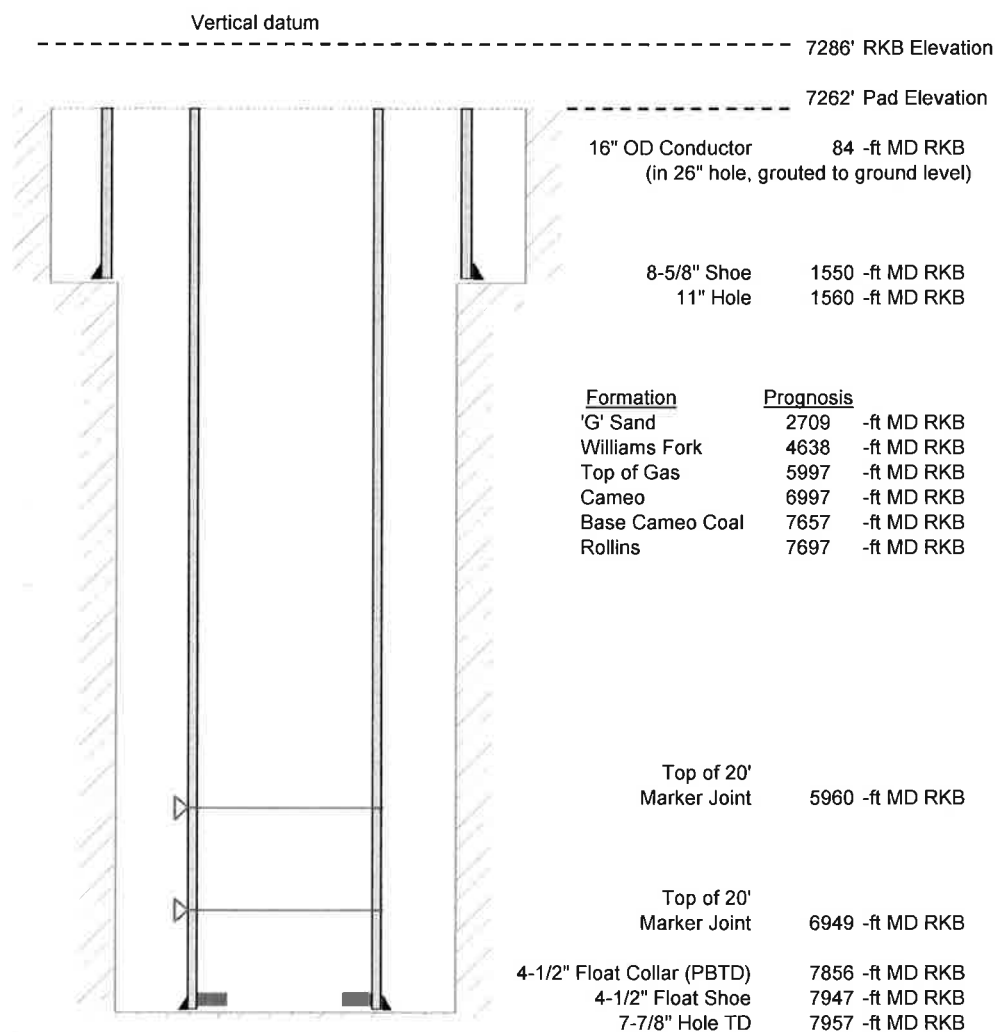


Laramie Energy, LLC  
 Bruton 19-03W  
 Slot A-11  
 H&P 290 (24-ft KB)

API # : 077-10432-00  
 SE/4 NW/4 S19/T9S/R93W/6th PM  
 Mesa County, CO  
 Date of diagram : 9/5/2017



#### Cementing details

8-5/8" 24# J55 STC Surface Csg	Lead	Tail
Density (ppg)	12.0	12.5
Volume (sx)	190	124
Yield (cf/sx)	2.52	2.22
Top (ft RKB)	24	1024
Bottom (ft RKB)	1024	1550
Returns (full or partial)	full	full

4-1/2" 11.6# L-80 LTC Prod Csg	Lead	Tail
Density (ppg)	12.7	13.5
Volume (sx)	820	402
Yield (cf/sx)	1.97	1.90
Est Top (ft RKB)	1024	5797
Est Bottom (ft RKB)	5797	7947
Returns (full or partial)	full	full

Displacement
8.3 ppg
122 bbls

Other Remarks : Surface-16 bbls cement to surface	Production-20 bbls cement to surface
---	--------------------------------------