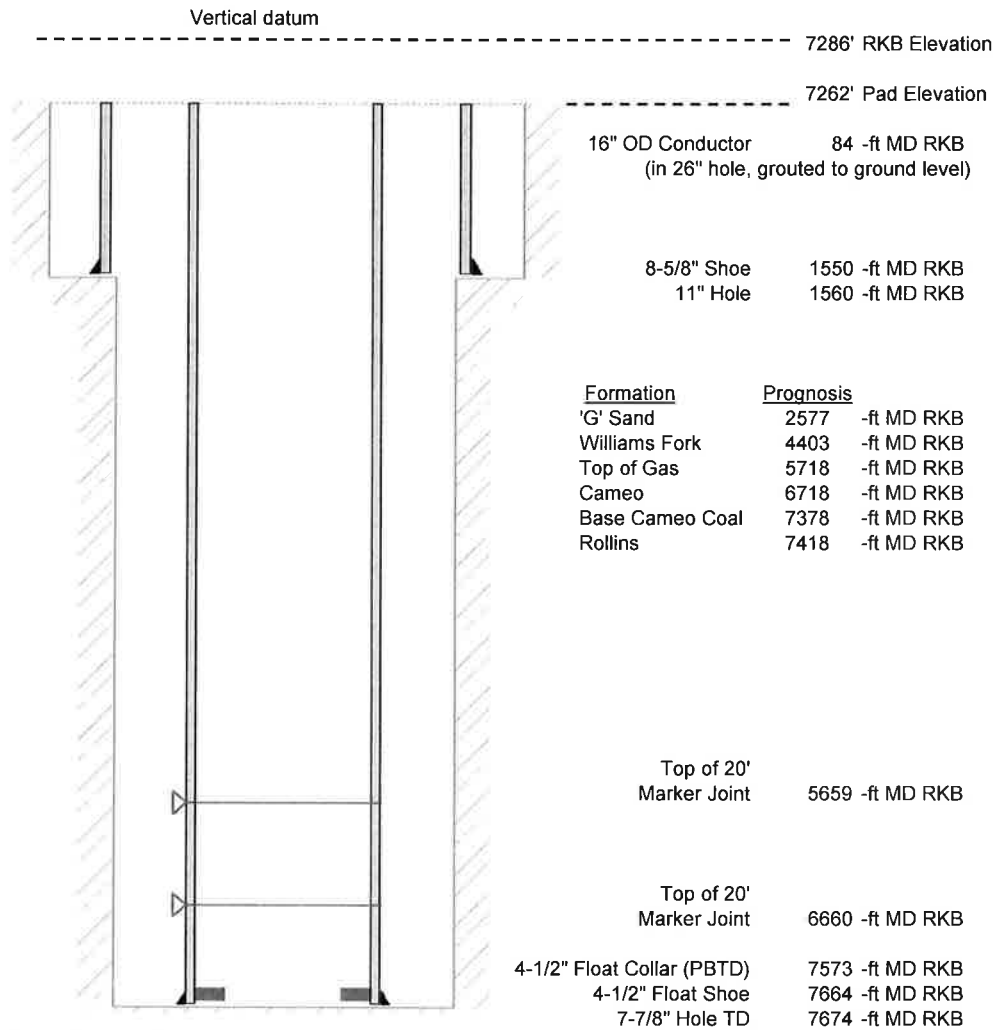


Laramie Energy, LLC
 Bruton 19-07W
 Slot A-8
 H&P 290 (24-ft KB)

API # : 077-10440-00
 SE/4 NW/4 S19/T9S/R93W/6th PM
 Mesa County, CO
 Date of diagram : 9/1/2017



Cementing details

8-5/8" 24# J55 STC Surface Csg	Lead	Tail
Density (ppg)	12.0	12.5
Volume (sx)	191	124
Yield (cf/sx)	2.52	2.22
Top (ft RKB)	24	1024
Bottom (ft RKB)	1024	1550
Returns (full or partial)	full	full

4-1/2" 11.6# L-80 LTC Prod Csg	Lead	Tail
Density (ppg)	12.7	13.5
Volume (sx)	771	402
Yield (cf/sx)	1.97	1.90
Est Top (ft RKB)	1024	5518
Est Bottom (ft RKB)	5518	7664
Returns (full or partial)	full	full

Displacement
8.3 ppg
118 bbls

Other Remarks : Surface-25 bbls cement to surface bbls spacer to surface	Production-25
---	---------------