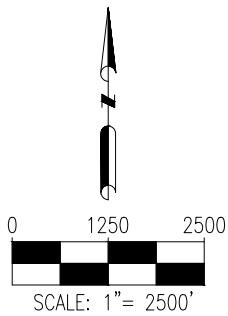
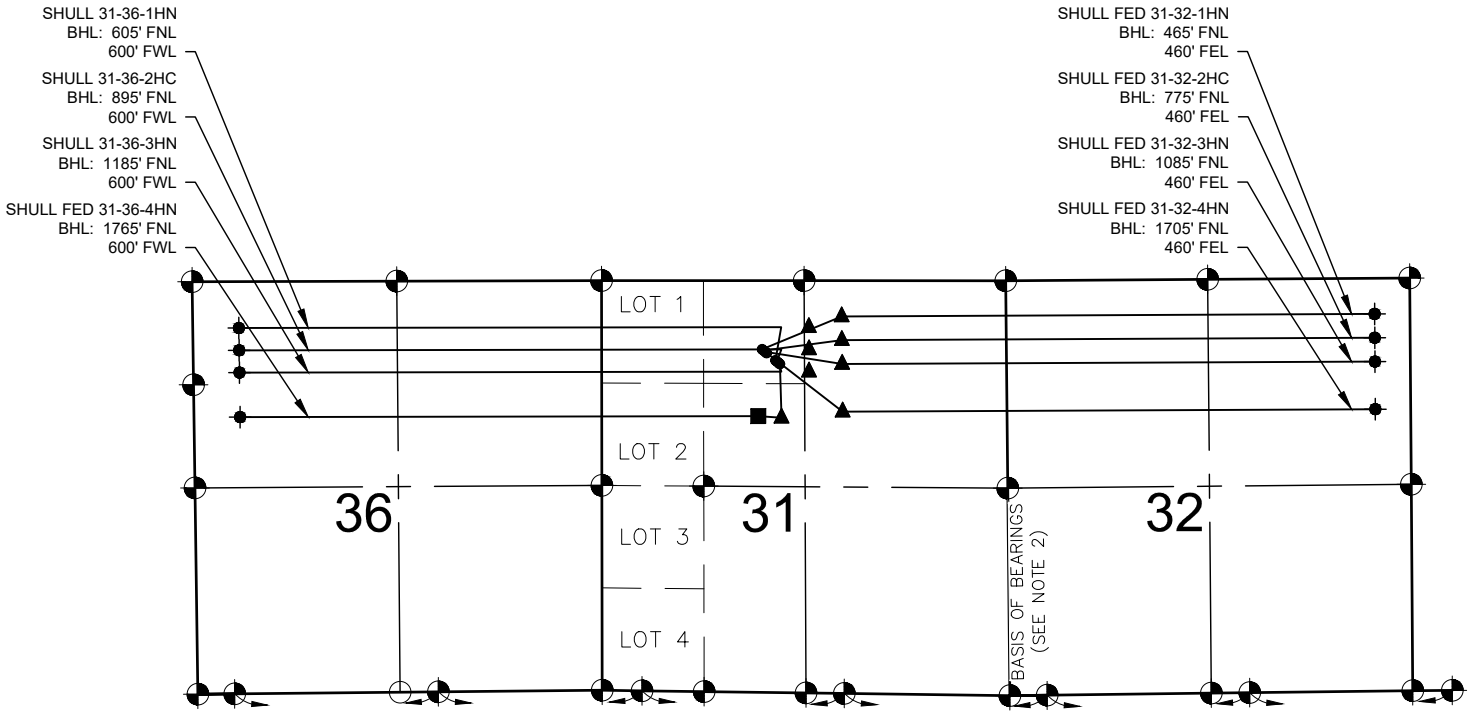


SHULL 9-59-31 NENW PAD MULTI-WELL PLAN



LEGEND

- = EXISTING MONUMENT
- = CALCULATED POSITION
- = PROPOSED WELL
- ◆ = EXISTING WELL
- = HEEL POINT LOCATION
- = BOTTOM HOLE
- = LANDING POINT
- LP = LANDING POINT
- BHL = BOTTOM HOLE LOCATION
- HP = HEEL POINT LOCATION

- NOTES:**
- THIS FIELD SURVEY CONFORMS TO THE MINIMUM STANDARDS SET BY THE C.O.G.C.C., RULE NO. 215
 - BEARINGS ARE BASED ON THE ASSUMPTION THAT THE EAST LINE OF THE SOUTHEAST QUARTER OF SECTION 31, BEARS S00°34'05"E BETWEEN THE MONUMENTS SHOWN HEREON.
 - ALL DISTANCES AND BEARINGS SHOWN HEREON ARE GROUND VALUES AS GPS MEASURED IN THE FIELD, WITH TIES TO WELLS MEASURED PERPENDICULAR TO SECTION LINES. THIS LOW DISTORTION PROJECTION (LDP) IS BASED ON THE NORTH AMERICAN DATUM OF 1983, U.S. SURVEY FOOT WITH A LATITUDE ORIGIN OF 40.655085°N, A CENTRAL MERIDIAN LONGITUDE OF 104.086861°W, AND A SCALE FACTOR ON THE CENTRAL MERIDIAN OF 1.000232 (EXACT). THE LDP BASIS OF BEARINGS IS GEODETIC NORTH.
 - FIELD VERIFICATION OF MONUMENTS COMPLETED WITHIN 1 YEAR OF SIGNATURE DATE.

NOTES:

- SHULL 31-36-1HN TO BE AT 1038' FNL & 2263' FWL.
BOTTOM HOLE AT 605' FNL & 600' FWL, SEC. 36, T9N R60W.
- SHULL 31-36-2HC TO BE AT 1053' FNL & 2283' FWL.
BOTTOM HOLE AT 895' FNL & 600' FWL, SEC. 36, T9N R60W.
- SHULL 31-36-3HN TO BE AT 1069' FNL & 2302' FWL.
BOTTOM HOLE AT 1185' FNL & 600' FWL, SEC. 36, T9N R60W.
- SHULL FED 31-36-4HN TO BE AT 1085' FNL & 2321' FWL.
BOTTOM HOLE AT 1765' FNL & 600' FWL, SEC. 36, T9N R60W.
- SHULL FED 31-32-1HN TO BE AT 894' FNL & 2090' FWL.
BOTTOM HOLE AT 465' FNL & 460' FEL, SEC. 32.
- SHULL FED 31-32-2HC TO BE AT 910' FNL & 2110' FWL.
BOTTOM HOLE AT 775' FNL & 460' FEL, SEC. 32.
- SHULL FED 31-32-3HN TO BE AT 926' FNL & 2129' FWL.
BOTTOM HOLE AT 1085' FNL & 460' FEL, SEC. 32.
- SHULL FED 31-32-4HN TO BE AT 942' FNL & 2148' FWL.
BOTTOM HOLE AT 1705' FNL & 460' FEL, SEC. 32.

7535 Hilltop Circle
Denver, CO 80221
(303) 928-7128
www.ascentgeomatics.com

FIELD DATE:
02-24-16

DRAWING DATE:
11-28-17

BY:
DJP

CHECKED:
SMF

SITE NAME:
SHULL 9-59-31 NENW PAD

SURFACE LOCATION:
**NE 1/4 NW 1/4 SEC. 31 T9N, R59W, 6TH P.M.
WELD COUNTY, COLORADO**

PREPARED FOR: