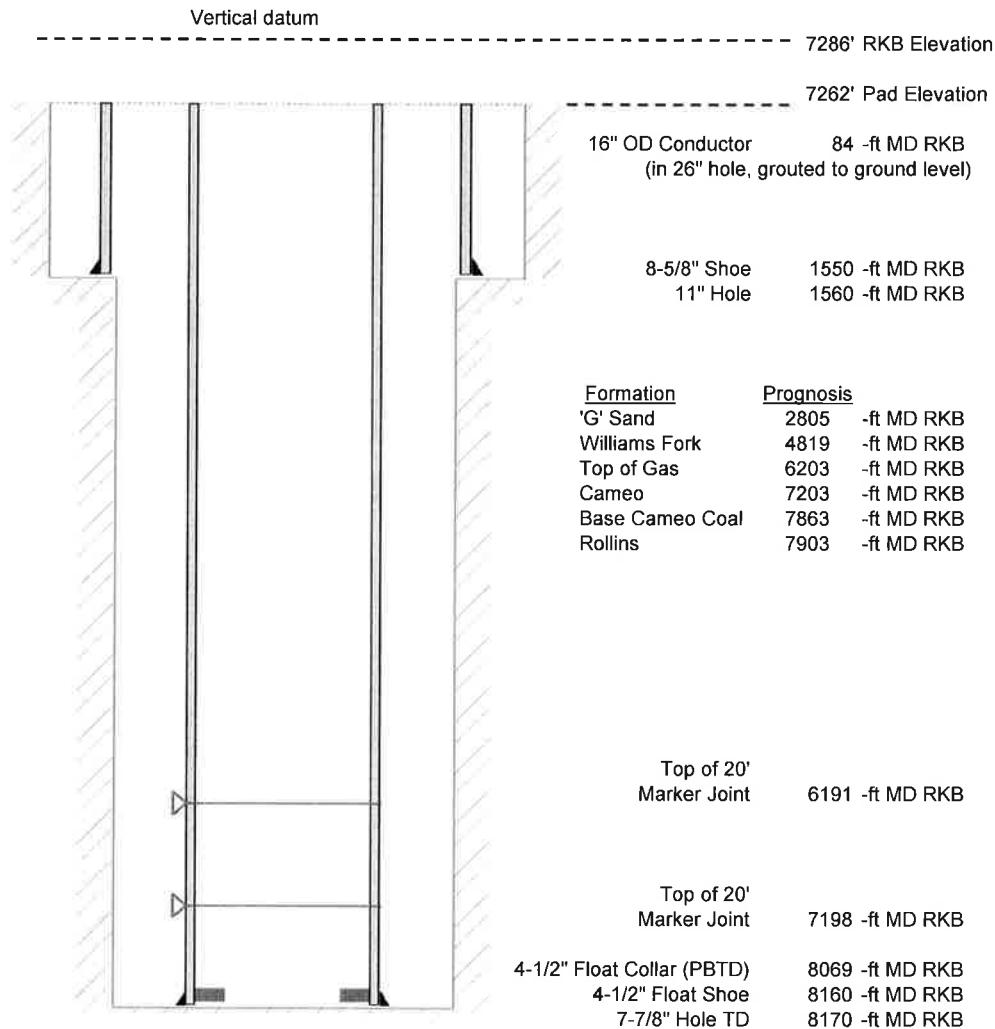


Laramie Energy, LLC
 Bruton 19-01W
 Slot B-12
 H&P 290 (24-ft KB)

API # : 077-10429-00
 SE/4 NW/4 S19/T9S/R93W/6th PM
 Mesa County, CO
 Date of diagram : 8/23/2017



Cementing details

8-5/8" 24# J55 STC Surface Csg	Lead	Tail
Density (ppg)	12.0	12.5
Volume (sx)	190	107
Yield (cf/sx)	2.52	2.22
Top (ft RKB)	28	1024
Bottom (ft RKB)	1024	1550
Returns (full or partial)	Full	Full

4-1/2" 11.6# L-80 LTC Prod Csg	Lead	Tail
Density (ppg)	12.7	13.5
Volume (sx)	859	401
Yield (cf/sx)	1.97	1.90
Est Top (ft RKB)	1030	6003
Est Bottom (ft RKB)	6003	8160
Returns (full or partial)	Full	Full

Displacement
8.3 ppg
125 bbls

Other Remarks :	Surface-24 bbls cement to surface bbls spacer to surface	Production-30
-----------------	---	---------------