

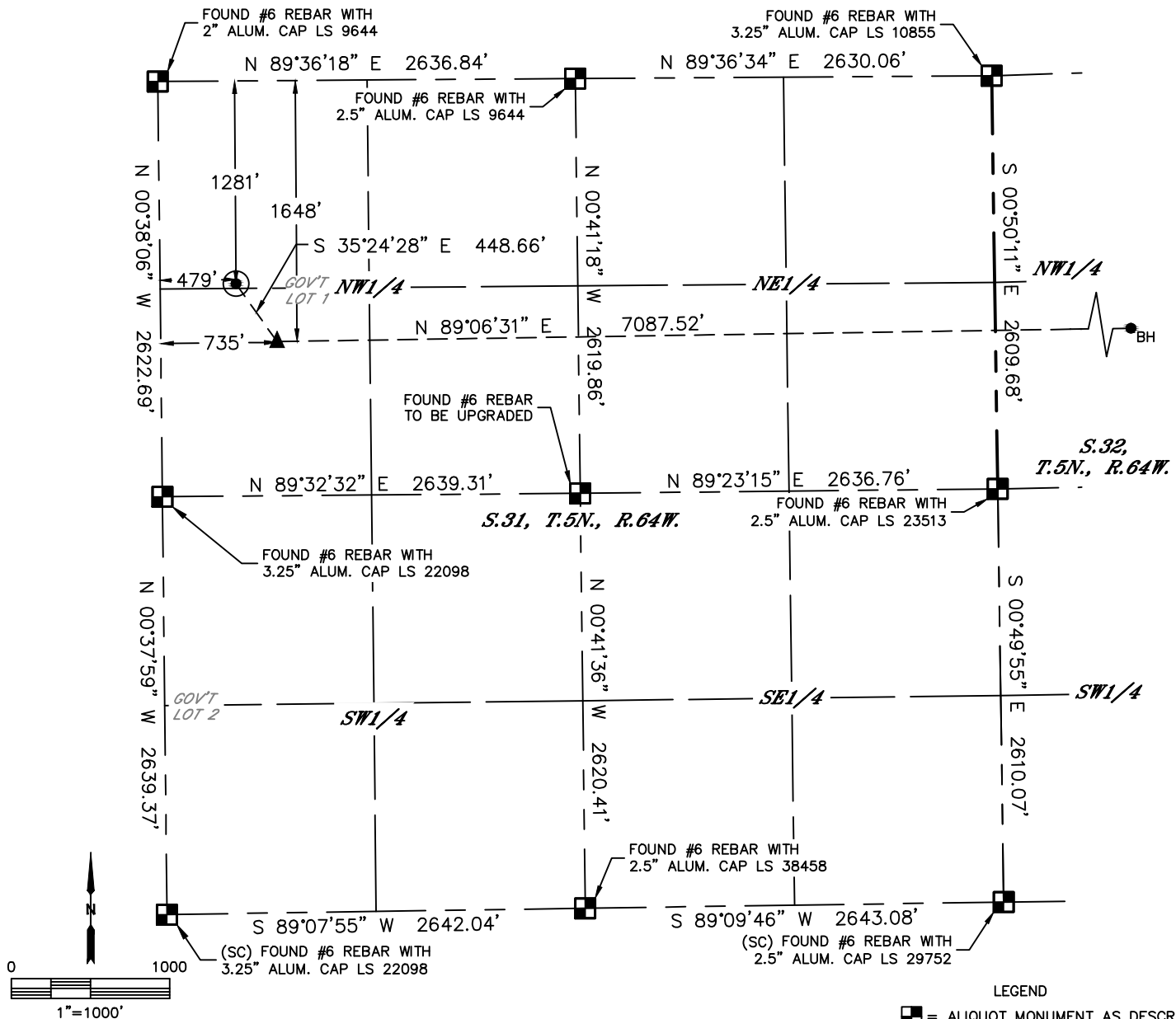


Lat40°, Inc. 6250 W. 10th Street, Unit 2, Greeley, CO 970-515-5294

WELL LOCATION CERTIFICATE

DAISY 31F-332

SECTION: 31
TOWNSHIP: 5N
RANGE: 64W
6TH. P.M.
WELD COUNTY, CO

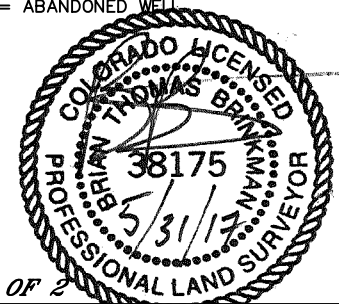


CLIENT: PDC ENERGY, INC.				LANDMAN: JEFF HINDMARSH		
INSTRUMENT OPERATOR: JAKE STILLE				SURVEY DATE: 5/25/2017		SURFACE USE: CROP LAND
SHL FOOTAGE		SHL LAT°	SHL LONG°	SHL PDOP	SHL ELEV (FT.)	SHL 1/4/1/4
1281	FNL	479	FWL	40.35934	-104.60033	2.6
BHL FOOTAGE		BHL LAT°	BHL LONG°	BHL S-T-R	EP LAT°	EP LONG°
1648	FNL	2550	FWL	40.35843	-104.57398	32-5-64

NEAREST CULTURAL ITEMS	
BUILDING	±1177'S
BUILDING UNIT	±1177'S
HIGH OCCUPANCY BUILDING UNIT	5280'+
DESIGNATED OUTSIDE ACTIVITY AREA	5280'+
PUBLIC ROAD (COUNTY ROAD 49)	±458' W
ABOVE GROUND UTILITY	±379' W
RAILROAD	5280'+
PROPERTY LINE	±391' W

NOTE:
1) Bearings shown are Grid Bearings of the Colorado State Plane Coordinate System, North Zone, North American Datum 1983. The lineal dimensions as contained herein are based upon the "U.S. Survey Foot."
2) Distances to section lines measured at 90 degrees from said section lines.
3) Ground elevations are based on an observed GPS elevation (NAVD 1988 DATUM).
4) Latitude and Longitude shown are (NAD 83 DATUM).
5) IMPROVEMENTS: See LOCATION DRAWING for all visible improvements within 500' of oil and gas location.
6) This map does not represent a boundary survey.

- LEGEND
- = ALIQUOT MONUMENT AS DESCRIBED
 - = CALCULATED POSITION
 - = SURFACE HOLE LOCATION (SHL)
 - ▲ = ENTRY POINT LOCATION (EP)
 - BH = BOTTOM HOLE LOCATION (BHL)
 - ⊕ = EXISTING WELL
 - = ABANDONED WELL



SHEET 1 OF 2
Brian T. Brinkman—On behalf of Lat40°, Inc.
Colorado Licensed Professional Land Surveyor No. 38175
DATE: 5/30/2017
PROJECT#: 2016074

Brian T. Brinkman—On behalf of Lot 10, Inc.
Colorado Licensed Professional Land Surveyor No. 38175
DATE: 5/30/2017
PROJECT#: 2016074