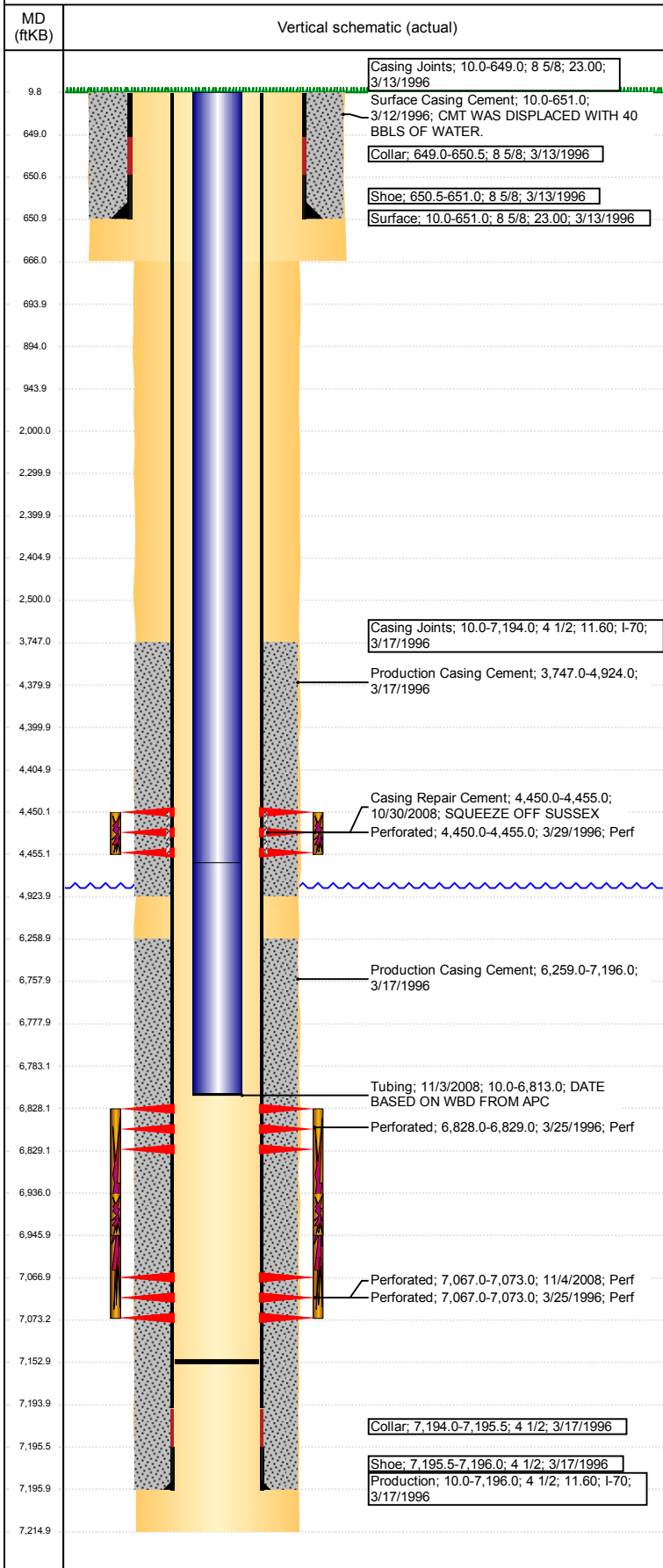


Well Name: HSR-DECHANT FARMS 10-36

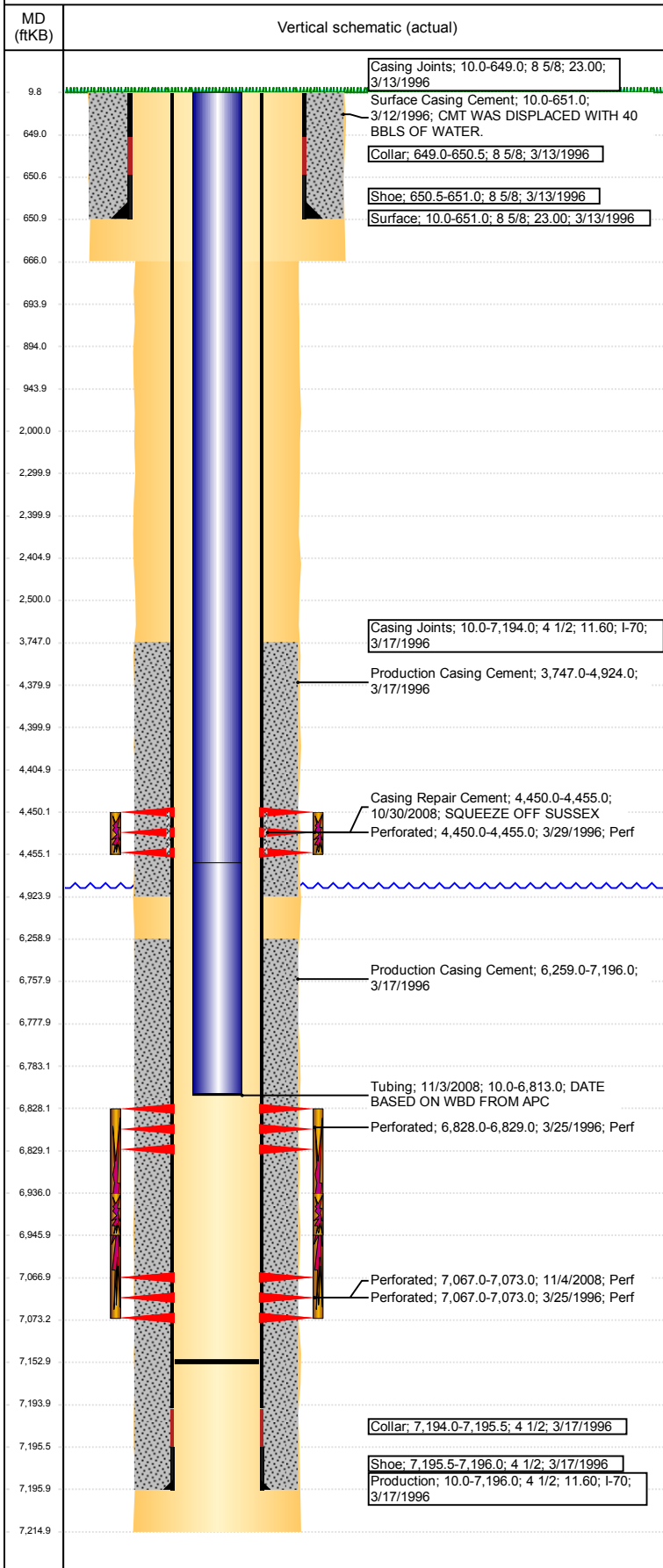
VERTICAL - ORIGINAL HOLE, 1/10/2018 11:19:45 AM



Well Header								
API 05-123-19100	Business Unit DJ BASIN		District 15		Well Config VERTICAL			
Original KB Elevation (ft) 4,831	KB - GL / MSL (ftKB) 10.00		Spud Date 3/12/1996		P & A Date			
Comment								
Directions To Well WELL IS ABOUT 6 MILES NORTH OF HUDSON. FROM KERSEY ROAD (WC 49), WEST NEAR ROAD 28 FENCE LINE, SOUTH INTO LOCATION.								
Congressional Location								
Quarter 3 NW	Quarter 4 SE	Section 36	Township 3	Twntshp N/S Dir N	Range 65	Range E/W Dir W		
Bottom Hole Location								
North-South Distance (ft)		From N or S Line		East-West Distance (ft)		From E or W Line		
Plug Back Total Depths								
Date	Depth (ftKB)	Method		Com				
3/17/1996	7,153.0	TAG						
Wellbore Sections								
Section Des		Size (in)		Act Top, MD (ftKB)		Act Btm, MD (ftKB)		
SURFACE		12 1/4		10		666		
PRODUCTION		7 7/8		666		7,215		
Zone Statuses								
Zone Name	Status Date	Status	Fluid Type	Job	Prod Method			
NIOBRARA	3/23/1996	PR	Oil	DRILLING/CO... CASING REPA...	Flowing			
NIOBRARA	11/4/2008	PR	Oil					
NIOBRARA	11/4/2008	PR	Oil					
NIOBRARA	12/19/2013	PR	Water					
SUSSEX	3/29/1996	PR	Oil					
SUSSEX	10/30/2008	AB	Oil		Flowing			
SUSSEX	12/19/2013	PR	Water					
SUSSEX	5/9/2017	SI						
CODELL	3/23/1996	PR	Oil					
CODELL	12/19/2013	PR	Water					
NIOBRARA-C...	12/19/2013	PR	Water	Flowing				
Casing Strings								
Surface, 651.0ftKB								
Casing Description Surface		Run Date 3/13/1996	OD (in) 8 5/8	Wt/Len (l...) 23.00	Grade	Top, MD (ft...) 10.0	MD (ftKB) 651.0	
Production, 7,196.0ftKB								
Casing Description Production		Run Date 3/17/1996	OD (in) 4 1/2	Wt/Len (l...) 11.60	Grade I-70	Top, MD (ft...) 10.0	MD (ftKB) 7,196.0	
Cement								
Description				Top Depth (ftKB)		Bottom Depth (ftKB)		
Surface Casing Cement				10.0		651.0		
Description				Top Depth (ftKB)		Bottom Depth (ftKB)		
Production Casing Cement				3,747.0		4,924.0		
Description				Top Depth (ftKB)		Bottom Depth (ftKB)		
Production Casing Cement				6,259.0		7,196.0		
Description				Top Depth (ftKB)		Bottom Depth (ftKB)		
Casing Repair Cement				4,450.0		4,455.0		
Description				Top Depth (ftKB)		Bottom Depth (ftKB)		
Dump Bail				6,758.0		6,778.0		
Description				Top Depth (ftKB)		Bottom Depth (ftKB)		
Dump Bail				4,380.0		4,400.0		
Description				Top Depth (ftKB)		Bottom Depth (ftKB)		
Balance Plug				2,405.0		2,500.0		
Description				Top Depth (ftKB)		Bottom Depth (ftKB)		
Balance Plug				2,300.0		2,400.0		
Description				Top Depth (ftKB)		Bottom Depth (ftKB)		
Cement Squeeze				2,000.0		2,500.0		
Description				Top Depth (ftKB)		Bottom Depth (ftKB)		
Balance Plug				894.0		944.0		
Description				Top Depth (ftKB)		Bottom Depth (ftKB)		
Balance Plug				694.0		894.0		
Description				Top Depth (ftKB)		Bottom Depth (ftKB)		
Balance Plug				10.0		694.0		
Tubing Strings								
Tubing Description Tubing		Run Date 11/3/2008	String... 2 3/8	ID (in) 2.00	Wt (lb/ft) 4.70	Grade J-55	Len (ft) 6,803.00	Set De...

Well Name: HSR-DECHANT FARMS 10-36

VERTICAL - ORIGINAL HOLE, 1/10/2018 11:19:45 AM



Tubing Components							
Item Des	OD (in)	Wt (lb/ft)	Grade	Jts	Len (ft)	Btm (ftKB)	Btm (TVD) (ftKB)
Tubing	2 3/8	4.70	J-55	144	4,532.00	4,542.0	
Tubing	2 3/8	4.70	J-55	72	2,269.00	6,811.0	
Cross Over	2 3/8			1	1.00	6,812.0	
Notched collar	2 3/8			1	1.00	6,813.0	

Other In Hole				
Run Date	Des	OD (in)	Top (ftKB)	Btm (ftKB)
1/9/2018	Cement Retainer	4	2,400.0	2,405.0
1/9/2018	Cast Iron Bridge Plug	4	4,400.0	4,405.0
1/9/2018	Cast Iron Bridge Plug	4	6,778.0	6,783.0

Logs			
Date	Type	Top, MD (ftKB)	Btm, MD (ftKB)
3/16/1996	CALIPER	4,250.0	7,215.0
3/16/1996	INDUCTION	651.0	7,215.0
3/21/1996	GAMMA RAY	3,600.0	7,130.0

Perforation Data					
Linked Zone	Bnch/St g	Sum of Entered Shot Total	Top (ftKB)	Btm (ftKB)	Date
CODELL, ORIGINAL HOLE		0	2,500.00	2,500.00	1/9/2018
SUSSEX, ORIGINAL HOLE		0	4,450.00	4,455.00	3/29/1996
NIOBRARA, ORIGINAL HOLE		0	6,828.00	6,829.00	3/25/1996
CODELL, ORIGINAL HOLE		0	7,067.00	7,073.00	3/25/1996
CODELL, ORIGINAL HOLE		0	7,067.00	7,073.00	11/4/2008
Total (Sum)		0			

Stimulation Intervals		
Start Date	Primary Job Type	
3/15/1996	DRILLING/COMPLETION - ORIGINAL	
Technical Result	Tech Result Details	Tech Result Note
Comment		
Start Date	Primary Job Type	
11/7/2008	RECOMPLETION	
Technical Result	Tech Result Details	Tech Result Note
Comment		
Start Date	Primary Job Type	
3/25/1996	DRILLING/COMPLETION - ORIGINAL	
Technical Result	Tech Result Details	Tech Result Note
Comment		
LIMITED ENERTY JOB		