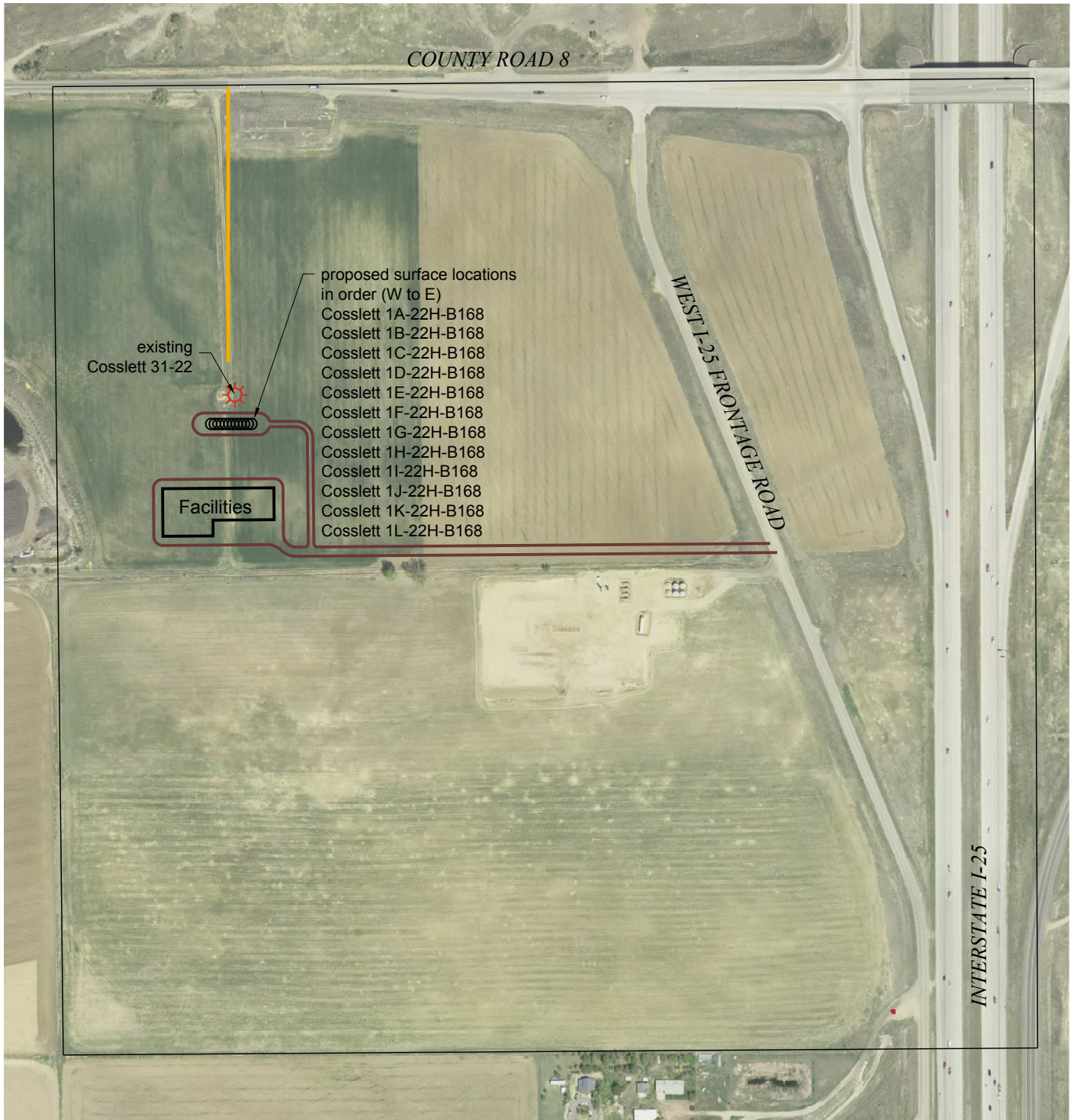


COSSLETT 22H-B168 PAD ACCESS MAP



— EXISTING ACCESS

— PROPOSED ACCESS



CRESTONE PEAK
RESOURCES

TOWNSHIP 1 NORTH, RANGE 68 WEST
SECTION 22: NE $\frac{1}{4}$
WELD COUNTY, COLORADO

SCALE: 1" = 400'

July 1, 2017