

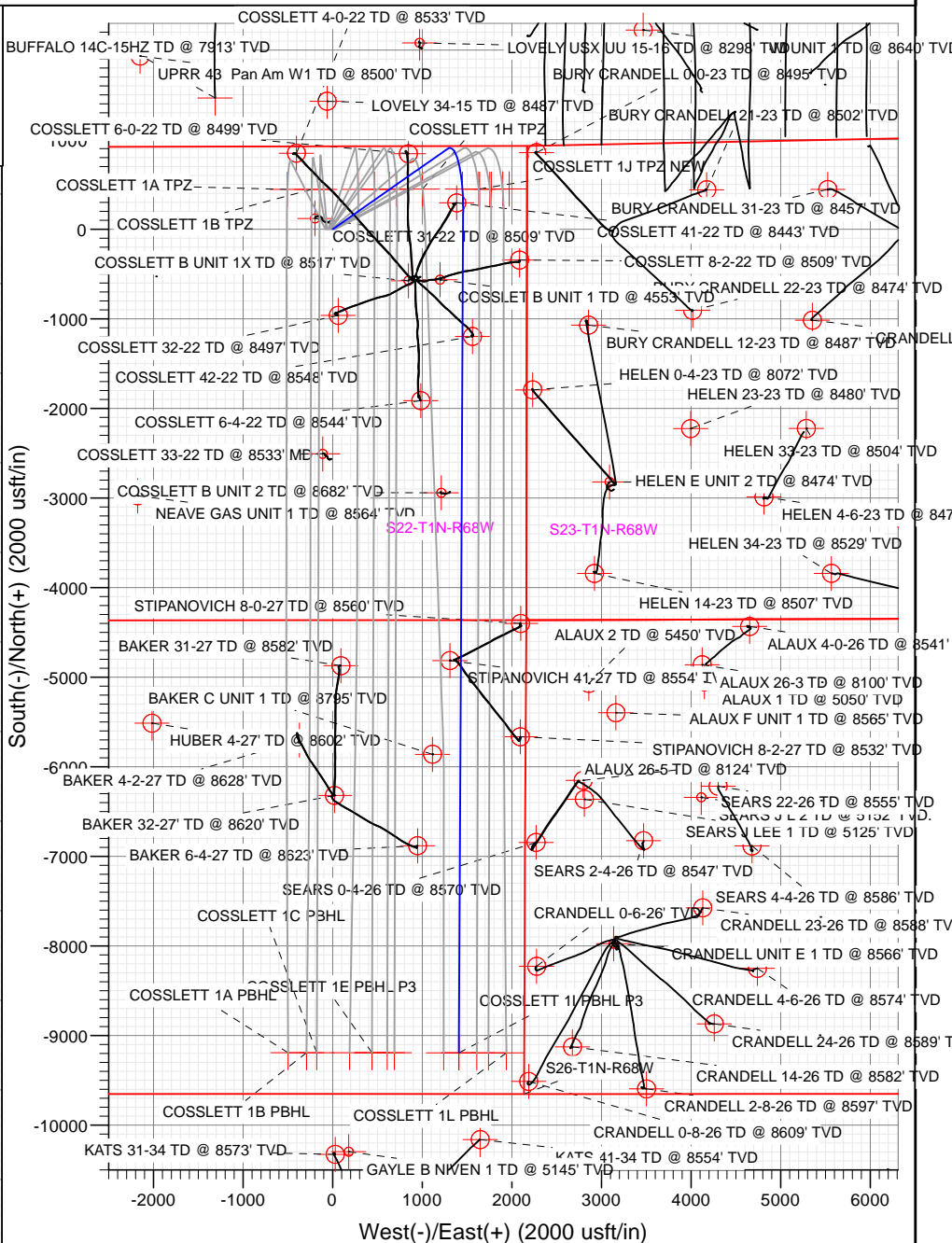


Sec	MD	Inc	Azi	TVD	+N/-S	+E/-W	Dleg	TFace	Vsect	Target
1	0.00	0.00	0.00	0.00	0.00	0.00	0.00	0.00	0.00	
2	500.00	0.00	0.00	500.00	0.00	0.00	0.00	0.00	0.00	
3	1239.63	14.79	55.03	1231.44	54.43	77.80	2.00	55.03	-42.01	
4	7026.65	14.79	55.03	6826.66	901.38	1288.50	0.00	0.00	-695.78	
5	8257.64	90.00	180.30	7630.00	192.11	1457.98	8.00	124.37	30.97	
6	17642.64	90.00	180.30	7630.00	-9192.16	1408.84	0.00	0.00	9300.09	COSSLETT 11 PBHL P3

Type TD	Target No Target (Freehand)	Azimuth 171.29	Origin Type Slot	N/S 0.00	E/W 0.00	From TVD 0.00
Name	TVD	+N-S	+E-W	Latitude	Longitude	
COSSLETT 11 PBHL	7550.00	-91.92 76	1408.84	40.016154	-104.982767	
COSSLETT 11 TPZ	7550.00	449.24	1409.27	40.042623	-104.982621	
COSSLETT 11 PBHL P3	7630.00	-91.92 76	1408.84	40.016154	-104.982767	

T M
 Azimuths to True North
 Magnetic North: 8.45°
 Magnetic Field
 Strength: 52177.9snT
 Dip Angle: 66.47°
 Date: 7/7/2017
 Model: HDGM

Start Build 2.00
 Start 5787.02 hold at 1239.63 MD
 Start DLS 8.00 TFO 124.37
 COSSLETT 11 TPZ
 Start 9385.00 hold at 8257.64 MD



Vertical Section at 171.29° (2000 usft/in)



WELL DETAILS: COSSLETT 1I-22H-B168

			5173.00		
+N/-S	+E/-W	Northing	Easting	Latitude	Longitude
0.00	0.00	1258338.29	3143407.62	40.041390	-104.987797



Cathedral Energy Services

Planning Report

Database:	USA EDM 5000 Multi Users DB	Local Co-ordinate Reference:	Well COSSLETT 1I-22H-B168
Company:	Crestone Peak Resources	TVD Reference:	23' KB @ 5196.00usft
Project:	DJ BASIN	MD Reference:	23' KB @ 5196.00usft
Site:	S22-T1N-R68W	North Reference:	True
Well:	COSSLETT 1I-22H-B168	Survey Calculation Method:	Minimum Curvature
Wellbore:	OH		
Design:	PLAN #3		

Project	DJ BASIN		
Map System:	US State Plane 1983	System Datum:	Mean Sea Level
Geo Datum:	North American Datum 1983		
Map Zone:	Colorado Northern Zone		

Site		S22-T1N-R68W			
Site Position:		Northing:	1,258,338.24 usft	Latitude:	40.041391
From:	Lat/Long	Easting:	3,143,327.55 usft	Longitude:	-104.988083
Position Uncertainty:	0.00 usft	Slot Radius:	13-3/16 "	Grid Convergence:	0.33 °

Well	COSSLETT 1I-22H-B168					
Well Position	+N/-S	0.00 usft	Northing:	1,258,338.29 usft	Latitude:	40.041390
	+E/-W	0.00 usft	Easting:	3,143,407.62 usft	Longitude:	-104.987797
Position Uncertainty		0.00 usft	Wellhead Elevation:	usft	Ground Level:	5,173.00 usft

Wellbore	OH				
Magnetics	Model Name	Sample Date	Declination	Dip Angle	Field Strength
			(°)	(°)	(nT)
	HDGM	7/7/2017	8.45	66.47	52,177.90000000

Design	PLAN #3				
Audit Notes:					
Version:	Phase:	PLAN	Tie On Depth:	0.00	
Vertical Section:	Depth From (TVD)	+N/-S	+E/-W	Direction	
	(usft)	(usft)	(usft)	(°)	
	0.00	0.00	0.00	171.29	

Plan Sections										
Measured Depth	Inclination	Azimuth	Vertical Depth	+N/-S	+E/-W	Dogleg Rate	Build Rate	Turn Rate	TFO	Target
(usft)	(°)	(°)	(usft)	(usft)	(usft)	(°/100usft)	(°/100usft)	(°/100usft)	(°)	
0.00	0.00	0.00	0.00	0.00	0.00	0.00	0.00	0.00	0.00	
500.00	0.00	0.00	500.00	0.00	0.00	0.00	0.00	0.00	0.00	
1,239.63	14.79	55.03	1,231.44	54.43	77.80	2.00	2.00	0.00	55.03	
7,026.65	14.79	55.03	6,826.66	901.38	1,288.50	0.00	0.00	0.00	0.00	
8,257.64	90.00	180.30	7,630.00	192.11	1,457.98	8.00	6.11	10.18	124.37	
17,642.64	90.00	180.30	7,630.00	-9,192.76	1,408.84	0.00	0.00	0.00	0.00	COSSLETT 1I PBHL I

Cathedral Energy Services

Planning Report

Database:	USA EDM 5000 Multi Users DB	Local Co-ordinate Reference:	Well COSSLETT 1I-22H-B168
Company:	Crestone Peak Resources	TVD Reference:	23' KB @ 5196.00usft
Project:	DJ BASIN	MD Reference:	23' KB @ 5196.00usft
Site:	S22-T1N-R68W	North Reference:	True
Well:	COSSLETT 1I-22H-B168	Survey Calculation Method:	Minimum Curvature
Wellbore:	OH		
Design:	PLAN #3		

Planned Survey

Measured Depth (usft)	Inclination (°)	Azimuth (°)	Vertical Depth (usft)	+N/-S (usft)	+E/-W (usft)	Vertical Section (usft)	Dogleg Rate (°/100usft)	Build Rate (°/100u)	Comments / Formations
0.00	0.00	0.00	0.00	0.00	0.00	0.00	0.00	0.00	
100.00	0.00	0.00	100.00	0.00	0.00	0.00	0.00	0.00	
200.00	0.00	0.00	200.00	0.00	0.00	0.00	0.00	0.00	
300.00	0.00	0.00	300.00	0.00	0.00	0.00	0.00	0.00	
400.00	0.00	0.00	400.00	0.00	0.00	0.00	0.00	0.00	
500.00	0.00	0.00	500.00	0.00	0.00	0.00	0.00	0.00	
600.00	2.00	55.03	599.98	1.00	1.43	-0.77	2.00	2.00	
700.00	4.00	55.03	699.84	4.00	5.72	-3.09	2.00	2.00	
800.00	6.00	55.03	799.45	9.00	12.86	-6.94	2.00	2.00	
900.00	8.00	55.03	898.70	15.98	22.84	-12.34	2.00	2.00	
1,000.00	10.00	55.03	997.47	24.95	35.66	-19.26	2.00	2.00	
1,100.00	12.00	55.03	1,095.62	35.88	51.30	-27.70	2.00	2.00	
1,200.00	14.00	55.03	1,193.06	48.78	69.73	-37.65	2.00	2.00	
1,239.63	14.79	55.03	1,231.44	54.43	77.80	-42.01	2.00	2.00	
1,300.00	14.79	55.03	1,289.81	63.26	90.43	-48.83	0.00	0.00	
1,400.00	14.79	55.03	1,386.50	77.90	111.35	-60.13	0.00	0.00	
1,500.00	14.79	55.03	1,483.18	92.53	132.27	-71.43	0.00	0.00	
1,600.00	14.79	55.03	1,579.87	107.17	153.19	-82.72	0.00	0.00	
1,700.00	14.79	55.03	1,676.55	121.80	174.12	-94.02	0.00	0.00	
1,800.00	14.79	55.03	1,773.24	136.44	195.04	-105.32	0.00	0.00	
1,900.00	14.79	55.03	1,869.92	151.07	215.96	-116.62	0.00	0.00	
2,000.00	14.79	55.03	1,966.61	165.71	236.88	-127.91	0.00	0.00	
2,100.00	14.79	55.03	2,063.30	180.34	257.80	-139.21	0.00	0.00	
2,200.00	14.79	55.03	2,159.98	194.98	278.72	-150.51	0.00	0.00	
2,300.00	14.79	55.03	2,256.67	209.62	299.64	-161.80	0.00	0.00	
2,400.00	14.79	55.03	2,353.35	224.25	320.56	-173.10	0.00	0.00	
2,500.00	14.79	55.03	2,450.04	238.89	341.48	-184.40	0.00	0.00	
2,600.00	14.79	55.03	2,546.72	253.52	362.40	-195.70	0.00	0.00	
2,700.00	14.79	55.03	2,643.41	268.16	383.33	-206.99	0.00	0.00	
2,800.00	14.79	55.03	2,740.09	282.79	404.25	-218.29	0.00	0.00	
2,900.00	14.79	55.03	2,836.78	297.43	425.17	-229.59	0.00	0.00	
3,000.00	14.79	55.03	2,933.47	312.06	446.09	-240.89	0.00	0.00	
3,100.00	14.79	55.03	3,030.15	326.70	467.01	-252.18	0.00	0.00	
3,200.00	14.79	55.03	3,126.84	341.33	487.93	-263.48	0.00	0.00	
3,300.00	14.79	55.03	3,223.52	355.97	508.85	-274.78	0.00	0.00	
3,400.00	14.79	55.03	3,320.21	370.60	529.77	-286.07	0.00	0.00	
3,500.00	14.79	55.03	3,416.89	385.24	550.69	-297.37	0.00	0.00	
3,600.00	14.79	55.03	3,513.58	399.88	571.61	-308.67	0.00	0.00	
3,700.00	14.79	55.03	3,610.27	414.51	592.53	-319.97	0.00	0.00	
3,800.00	14.79	55.03	3,706.95	429.15	613.46	-331.26	0.00	0.00	
3,900.00	14.79	55.03	3,803.64	443.78	634.38	-342.56	0.00	0.00	
4,000.00	14.79	55.03	3,900.32	458.42	655.30	-353.86	0.00	0.00	
4,100.00	14.79	55.03	3,997.01	473.05	676.22	-365.15	0.00	0.00	
4,200.00	14.79	55.03	4,093.69	487.69	697.14	-376.45	0.00	0.00	
4,300.00	14.79	55.03	4,190.38	502.32	718.06	-387.75	0.00	0.00	
4,400.00	14.79	55.03	4,287.07	516.96	738.98	-399.05	0.00	0.00	
4,500.00	14.79	55.03	4,383.75	531.59	759.90	-410.34	0.00	0.00	
4,600.00	14.79	55.03	4,480.44	546.23	780.82	-421.64	0.00	0.00	
4,700.00	14.79	55.03	4,577.12	560.86	801.74	-432.94	0.00	0.00	
4,800.00	14.79	55.03	4,673.81	575.50	822.66	-444.24	0.00	0.00	
4,900.00	14.79	55.03	4,770.49	590.13	843.59	-455.53	0.00	0.00	
5,000.00	14.79	55.03	4,867.18	604.77	864.51	-466.83	0.00	0.00	

Cathedral Energy Services

Planning Report

Database:	USA EDM 5000 Multi Users DB	Local Co-ordinate Reference:	Well COSSLETT 1I-22H-B168
Company:	Crestone Peak Resources	TVD Reference:	23' KB @ 5196.00usft
Project:	DJ BASIN	MD Reference:	23' KB @ 5196.00usft
Site:	S22-T1N-R68W	North Reference:	True
Well:	COSSLETT 1I-22H-B168	Survey Calculation Method:	Minimum Curvature
Wellbore:	OH		
Design:	PLAN #3		

Planned Survey

Measured Depth (usft)	Inclination (°)	Azimuth (°)	Vertical Depth (usft)	+N/-S (usft)	+E/-W (usft)	Vertical Section (usft)	Dogleg Rate (°/100usft)	Build Rate (°/100u)	Comments / Formations
5,100.00	14.79	55.03	4,963.87	619.41	885.43	-478.13	0.00	0.00	
5,200.00	14.79	55.03	5,060.55	634.04	906.35	-489.42	0.00	0.00	
5,300.00	14.79	55.03	5,157.24	648.68	927.27	-500.72	0.00	0.00	
5,400.00	14.79	55.03	5,253.92	663.31	948.19	-512.02	0.00	0.00	
5,500.00	14.79	55.03	5,350.61	677.95	969.11	-523.32	0.00	0.00	
5,600.00	14.79	55.03	5,447.29	692.58	990.03	-534.61	0.00	0.00	
5,700.00	14.79	55.03	5,543.98	707.22	1,010.95	-545.91	0.00	0.00	
5,800.00	14.79	55.03	5,640.67	721.85	1,031.87	-557.21	0.00	0.00	
5,900.00	14.79	55.03	5,737.35	736.49	1,052.80	-568.50	0.00	0.00	
6,000.00	14.79	55.03	5,834.04	751.12	1,073.72	-579.80	0.00	0.00	
6,100.00	14.79	55.03	5,930.72	765.76	1,094.64	-591.10	0.00	0.00	
6,200.00	14.79	55.03	6,027.41	780.39	1,115.56	-602.40	0.00	0.00	
6,300.00	14.79	55.03	6,124.09	795.03	1,136.48	-613.69	0.00	0.00	
6,400.00	14.79	55.03	6,220.78	809.67	1,157.40	-624.99	0.00	0.00	
6,500.00	14.79	55.03	6,317.46	824.30	1,178.32	-636.29	0.00	0.00	
6,600.00	14.79	55.03	6,414.15	838.94	1,199.24	-647.58	0.00	0.00	
6,700.00	14.79	55.03	6,510.84	853.57	1,220.16	-658.88	0.00	0.00	
6,800.00	14.79	55.03	6,607.52	868.21	1,241.08	-670.18	0.00	0.00	
6,900.00	14.79	55.03	6,704.21	882.84	1,262.00	-681.48	0.00	0.00	
7,000.00	14.79	55.03	6,800.89	897.48	1,282.93	-692.77	0.00	0.00	
7,026.65	14.79	55.03	6,826.66	901.38	1,288.50	-695.78	0.00	0.00	
7,100.00	12.44	78.09	6,898.00	908.38	1,303.92	-700.37	8.00	-3.21	
7,200.00	13.29	114.42	6,995.64	905.85	1,324.96	-694.68	8.00	0.85	
7,300.00	18.02	138.78	7,092.01	889.44	1,345.64	-675.33	8.00	4.73	
7,400.00	24.47	152.02	7,185.22	859.47	1,365.58	-642.69	8.00	6.45	
7,500.00	31.60	159.79	7,273.46	816.53	1,384.38	-597.39	8.00	7.13	
7,600.00	39.04	164.88	7,355.01	761.45	1,401.68	-540.33	8.00	7.44	
7,700.00	46.65	168.56	7,428.29	695.31	1,417.13	-472.61	8.00	7.60	
7,800.00	54.34	171.40	7,491.87	619.38	1,430.44	-395.54	8.00	7.69	
7,900.00	62.09	173.74	7,544.51	535.16	1,441.34	-310.64	8.00	7.75	
7,981.12	68.40	175.40	7,578.46	461.87	1,448.28	-237.14	8.00	7.78	COSSLETT 1I TPZ
8,000.00	69.87	175.77	7,585.19	444.27	1,449.64	-219.55	8.00	7.79	
8,100.00	77.68	177.60	7,613.11	348.49	1,455.16	-124.04	8.00	7.80	
8,200.00	85.49	179.33	7,627.73	249.69	1,457.79	-25.97	8.00	7.82	
8,257.64	90.00	180.30	7,630.00	192.11	1,457.98	30.97	8.00	7.82	
8,300.00	90.00	180.30	7,630.00	149.75	1,457.76	72.81	0.00	0.00	
8,400.00	90.00	180.30	7,630.00	49.75	1,457.23	171.58	0.00	0.00	
8,500.00	90.00	180.30	7,630.00	-50.25	1,456.71	270.34	0.00	0.00	
8,600.00	90.00	180.30	7,630.00	-150.25	1,456.19	369.11	0.00	0.00	
8,700.00	90.00	180.30	7,630.00	-250.25	1,455.66	467.87	0.00	0.00	
8,800.00	90.00	180.30	7,630.00	-350.25	1,455.14	566.64	0.00	0.00	
8,900.00	90.00	180.30	7,630.00	-450.24	1,454.61	665.40	0.00	0.00	
9,000.00	90.00	180.30	7,630.00	-550.24	1,454.09	764.17	0.00	0.00	
9,100.00	90.00	180.30	7,630.00	-650.24	1,453.57	862.93	0.00	0.00	
9,200.00	90.00	180.30	7,630.00	-750.24	1,453.04	961.70	0.00	0.00	
9,300.00	90.00	180.30	7,630.00	-850.24	1,452.52	1,060.46	0.00	0.00	
9,400.00	90.00	180.30	7,630.00	-950.24	1,452.00	1,159.23	0.00	0.00	
9,500.00	90.00	180.30	7,630.00	-1,050.24	1,451.47	1,257.99	0.00	0.00	
9,600.00	90.00	180.30	7,630.00	-1,150.23	1,450.95	1,356.76	0.00	0.00	
9,700.00	90.00	180.30	7,630.00	-1,250.23	1,450.43	1,455.53	0.00	0.00	
9,800.00	90.00	180.30	7,630.00	-1,350.23	1,449.90	1,554.29	0.00	0.00	
9,900.00	90.00	180.30	7,630.00	-1,450.23	1,449.38	1,653.06	0.00	0.00	

Cathedral Energy Services

Planning Report

Database:	USA EDM 5000 Multi Users DB	Local Co-ordinate Reference:	Well COSSLETT 1I-22H-B168
Company:	Crestone Peak Resources	TVD Reference:	23' KB @ 5196.00usft
Project:	DJ BASIN	MD Reference:	23' KB @ 5196.00usft
Site:	S22-T1N-R68W	North Reference:	True
Well:	COSSLETT 1I-22H-B168	Survey Calculation Method:	Minimum Curvature
Wellbore:	OH		
Design:	PLAN #3		

Planned Survey									
Measured Depth (usft)	Inclination (°)	Azimuth (°)	Vertical Depth (usft)	+N/-S (usft)	+E/-W (usft)	Vertical Section (usft)	Dogleg Rate (°/100usft)	Build Rate (°/100u)	Comments / Formations
10,000.00	90.00	180.30	7,630.00	-1,550.23	1,448.86	1,751.82	0.00	0.00	
10,100.00	90.00	180.30	7,630.00	-1,650.23	1,448.33	1,850.59	0.00	0.00	
10,200.00	90.00	180.30	7,630.00	-1,750.23	1,447.81	1,949.35	0.00	0.00	
10,300.00	90.00	180.30	7,630.00	-1,850.23	1,447.28	2,048.12	0.00	0.00	
10,400.00	90.00	180.30	7,630.00	-1,950.22	1,446.76	2,146.88	0.00	0.00	
10,500.00	90.00	180.30	7,630.00	-2,050.22	1,446.24	2,245.65	0.00	0.00	
10,600.00	90.00	180.30	7,630.00	-2,150.22	1,445.71	2,344.41	0.00	0.00	
10,700.00	90.00	180.30	7,630.00	-2,250.22	1,445.19	2,443.18	0.00	0.00	
10,800.00	90.00	180.30	7,630.00	-2,350.22	1,444.67	2,541.94	0.00	0.00	
10,900.00	90.00	180.30	7,630.00	-2,450.22	1,444.14	2,640.71	0.00	0.00	
11,000.00	90.00	180.30	7,630.00	-2,550.22	1,443.62	2,739.47	0.00	0.00	
11,100.00	90.00	180.30	7,630.00	-2,650.21	1,443.10	2,838.24	0.00	0.00	
11,200.00	90.00	180.30	7,630.00	-2,750.21	1,442.57	2,937.00	0.00	0.00	
11,300.00	90.00	180.30	7,630.00	-2,850.21	1,442.05	3,035.77	0.00	0.00	
11,400.00	90.00	180.30	7,630.00	-2,950.21	1,441.52	3,134.53	0.00	0.00	
11,500.00	90.00	180.30	7,630.00	-3,050.21	1,441.00	3,233.30	0.00	0.00	
11,600.00	90.00	180.30	7,630.00	-3,150.21	1,440.48	3,332.06	0.00	0.00	
11,700.00	90.00	180.30	7,630.00	-3,250.21	1,439.95	3,430.83	0.00	0.00	
11,800.00	90.00	180.30	7,630.00	-3,350.20	1,439.43	3,529.60	0.00	0.00	
11,900.00	90.00	180.30	7,630.00	-3,450.20	1,438.91	3,628.36	0.00	0.00	
12,000.00	90.00	180.30	7,630.00	-3,550.20	1,438.38	3,727.13	0.00	0.00	
12,100.00	90.00	180.30	7,630.00	-3,650.20	1,437.86	3,825.89	0.00	0.00	
12,200.00	90.00	180.30	7,630.00	-3,750.20	1,437.34	3,924.66	0.00	0.00	
12,300.00	90.00	180.30	7,630.00	-3,850.20	1,436.81	4,023.42	0.00	0.00	
12,400.00	90.00	180.30	7,630.00	-3,950.20	1,436.29	4,122.19	0.00	0.00	
12,500.00	90.00	180.30	7,630.00	-4,050.20	1,435.77	4,220.95	0.00	0.00	
12,600.00	90.00	180.30	7,630.00	-4,150.19	1,435.24	4,319.72	0.00	0.00	
12,700.00	90.00	180.30	7,630.00	-4,250.19	1,434.72	4,418.48	0.00	0.00	
12,800.00	90.00	180.30	7,630.00	-4,350.19	1,434.19	4,517.25	0.00	0.00	
12,900.00	90.00	180.30	7,630.00	-4,450.19	1,433.67	4,616.01	0.00	0.00	
13,000.00	90.00	180.30	7,630.00	-4,550.19	1,433.15	4,714.78	0.00	0.00	
13,100.00	90.00	180.30	7,630.00	-4,650.19	1,432.62	4,813.54	0.00	0.00	
13,200.00	90.00	180.30	7,630.00	-4,750.19	1,432.10	4,912.31	0.00	0.00	
13,300.00	90.00	180.30	7,630.00	-4,850.18	1,431.58	5,011.07	0.00	0.00	
13,400.00	90.00	180.30	7,630.00	-4,950.18	1,431.05	5,109.84	0.00	0.00	
13,500.00	90.00	180.30	7,630.00	-5,050.18	1,430.53	5,208.60	0.00	0.00	
13,600.00	90.00	180.30	7,630.00	-5,150.18	1,430.01	5,307.37	0.00	0.00	
13,700.00	90.00	180.30	7,630.00	-5,250.18	1,429.48	5,406.14	0.00	0.00	
13,800.00	90.00	180.30	7,630.00	-5,350.18	1,428.96	5,504.90	0.00	0.00	
13,900.00	90.00	180.30	7,630.00	-5,450.18	1,428.44	5,603.67	0.00	0.00	
14,000.00	90.00	180.30	7,630.00	-5,550.17	1,427.91	5,702.43	0.00	0.00	
14,100.00	90.00	180.30	7,630.00	-5,650.17	1,427.39	5,801.20	0.00	0.00	
14,200.00	90.00	180.30	7,630.00	-5,750.17	1,426.86	5,899.96	0.00	0.00	
14,300.00	90.00	180.30	7,630.00	-5,850.17	1,426.34	5,998.73	0.00	0.00	
14,400.00	90.00	180.30	7,630.00	-5,950.17	1,425.82	6,097.49	0.00	0.00	
14,500.00	90.00	180.30	7,630.00	-6,050.17	1,425.29	6,196.26	0.00	0.00	
14,600.00	90.00	180.30	7,630.00	-6,150.17	1,424.77	6,295.02	0.00	0.00	
14,700.00	90.00	180.30	7,630.00	-6,250.16	1,424.25	6,393.79	0.00	0.00	
14,800.00	90.00	180.30	7,630.00	-6,350.16	1,423.72	6,492.55	0.00	0.00	
14,900.00	90.00	180.30	7,630.00	-6,450.16	1,423.20	6,591.32	0.00	0.00	
15,000.00	90.00	180.30	7,630.00	-6,550.16	1,422.68	6,690.08	0.00	0.00	
15,100.00	90.00	180.30	7,630.00	-6,650.16	1,422.15	6,788.85	0.00	0.00	

Cathedral Energy Services

Planning Report

Database:	USA EDM 5000 Multi Users DB	Local Co-ordinate Reference:	Well COSSLETT 1I-22H-B168
Company:	Crestone Peak Resources	TVD Reference:	23' KB @ 5196.00usft
Project:	DJ BASIN	MD Reference:	23' KB @ 5196.00usft
Site:	S22-T1N-R68W	North Reference:	True
Well:	COSSLETT 1I-22H-B168	Survey Calculation Method:	Minimum Curvature
Wellbore:	OH		
Design:	PLAN #3		

Planned Survey

Measured Depth (usft)	Inclination (°)	Azimuth (°)	Vertical Depth (usft)	+N/-S (usft)	+E/-W (usft)	Vertical Section (usft)	Dogleg Rate (°/100usft)	Build Rate (°/100u)	Comments / Formations
15,200.00	90.00	180.30	7,630.00	-6,750.16	1,421.63	6,887.61	0.00	0.00	
15,300.00	90.00	180.30	7,630.00	-6,850.16	1,421.10	6,986.38	0.00	0.00	
15,400.00	90.00	180.30	7,630.00	-6,950.16	1,420.58	7,085.14	0.00	0.00	
15,500.00	90.00	180.30	7,630.00	-7,050.15	1,420.06	7,183.91	0.00	0.00	
15,600.00	90.00	180.30	7,630.00	-7,150.15	1,419.53	7,282.68	0.00	0.00	
15,700.00	90.00	180.30	7,630.00	-7,250.15	1,419.01	7,381.44	0.00	0.00	
15,800.00	90.00	180.30	7,630.00	-7,350.15	1,418.49	7,480.21	0.00	0.00	
15,900.00	90.00	180.30	7,630.00	-7,450.15	1,417.96	7,578.97	0.00	0.00	
16,000.00	90.00	180.30	7,630.00	-7,550.15	1,417.44	7,677.74	0.00	0.00	
16,100.00	90.00	180.30	7,630.00	-7,650.15	1,416.92	7,776.50	0.00	0.00	
16,200.00	90.00	180.30	7,630.00	-7,750.14	1,416.39	7,875.27	0.00	0.00	
16,300.00	90.00	180.30	7,630.00	-7,850.14	1,415.87	7,974.03	0.00	0.00	
16,400.00	90.00	180.30	7,630.00	-7,950.14	1,415.35	8,072.80	0.00	0.00	
16,500.00	90.00	180.30	7,630.00	-8,050.14	1,414.82	8,171.56	0.00	0.00	
16,600.00	90.00	180.30	7,630.00	-8,150.14	1,414.30	8,270.33	0.00	0.00	
16,700.00	90.00	180.30	7,630.00	-8,250.14	1,413.77	8,369.09	0.00	0.00	
16,800.00	90.00	180.30	7,630.00	-8,350.14	1,413.25	8,467.86	0.00	0.00	
16,900.00	90.00	180.30	7,630.00	-8,450.13	1,412.73	8,566.62	0.00	0.00	
17,000.00	90.00	180.30	7,630.00	-8,550.13	1,412.20	8,665.39	0.00	0.00	
17,100.00	90.00	180.30	7,630.00	-8,650.13	1,411.68	8,764.15	0.00	0.00	
17,200.00	90.00	180.30	7,630.00	-8,750.13	1,411.16	8,862.92	0.00	0.00	
17,300.00	90.00	180.30	7,630.00	-8,850.13	1,410.63	8,961.68	0.00	0.00	
17,400.00	90.00	180.30	7,630.00	-8,950.13	1,410.11	9,060.45	0.00	0.00	
17,500.00	90.00	180.30	7,630.00	-9,050.13	1,409.59	9,159.22	0.00	0.00	
17,600.00	90.00	180.30	7,630.00	-9,150.13	1,409.06	9,257.98	0.00	0.00	
17,642.64	90.00	180.30	7,630.00	-9,192.76	1,408.84	9,300.09	0.00	0.00	COSSLETT 1I PBHL P3 - COSSLETT 1I PBHL

Targets

Target Name	Dip Angle (°)	Dip Dir. (°)	TVD (usft)	+N/-S (usft)	+E/-W (usft)	Northing (usft)	Easting (usft)	Latitude	Longitude
COSSLETT 1I TPZ	0.00	0.00	7,550.00	449.24	1,449.27	1,258,795.89	3,144,854.27	40.042623	-104.982621
- hit/miss target									
- Shape									
- plan misses target center by 31.13usft at 7982.82usft MD (7579.09 TVD, 460.29 N, 1448.41 E)									
- Point									
COSSLETT 1I PBHL P3	0.00	0.00	7,630.00	-9,192.76	1,408.84	1,249,153.82	3,144,869.54	40.016154	-104.982767
- plan hits target center									
- Point									
COSSLETT 1I PBHL	0.00	0.00	7,550.00	-9,192.76	1,408.84	1,249,153.82	3,144,869.54	40.016154	-104.982767
- plan misses target center by 80.00usft at 17642.64usft MD (7630.00 TVD, -9192.76 N, 1408.84 E)									
- Point									