

# **FREMONT ENVIRONMENTAL INC.**

November 8, 2017

Mr. Jacob Evans  
Noble Energy Inc.  
2115 117<sup>th</sup> Avenue  
Greeley, CO 80634

Subject:     **Ground Water Data Submittal**  
                Romero Angelina 1,2  
                SWNW Sec. 3 T4N R65W  
                API # 05-123-12728, Facility #323216  
                La Salle, Colorado  
                Fremont Project No. C010-009

Dear Mr. Evans:

Enclosed please find a copy of the above referenced Ground Water Data Submittal for the Romero Angelina 1,2 site in Weld County, Colorado. The enclosed data describes the ground water quality at the site during the recent quarterly sampling and monitoring event.

Please contact me at (303) 956-8714 if you require any additional information.

Fremont appreciates the opportunity to provide this service.

Sincerely,  
**FREMONT ENVIRONMENTAL INC.**



Paul V. Henahan, P.E.  
Senior Consultant

Enclosure

TABLE 1  
SUMMARY OF GROUND WATER ELEVATION DATA AND CHEMISTRY DATA  
NOBLE ENERGY INC.  
ROMERO ANGELINO 1,2, LA SALLE, COLORADO  
FREMONT PROJECT NO. C010-009

SAMPLE LOCATION	DATE	BENZENE (µg/L)	TOLUENE (µg/L)	ETHYL BENZENE (µg/L)	XYLENES (µg/L)	TOC ELEVATION (feet)	DEPTH TO GROUND WATER (ft)	GROUND WATER ELEVATION (ft)	FREE PRODUCT THICKNESS (ft)
MW-1	9/1/2010 6/20/2011	9430 WD	2010 WD	532 WD	7610 WD	99.33 WD	3.74 WD	95.59 WD	0 WD
MW-2	9/1/2010	<1.0	<1.0	<1.0	5.43	99.13	3.62	95.51	0
	6/20/2011	NS	NS	NS	NS		4.27	94.86	0
	9/23/2011	NS	NS	NS	NS		3.21	95.92	0
	12/19/2011	<1.0	<1.0	<1.0	<1.0		3.87	95.26	0
	3/5/2013	NS	NS	NS	NS		4.85	94.28	0
	6/26/2013	NS	NS	NS	NS		4.28	94.85	0
	9/9/2013	NS	NS	NS	NS		2.38	96.75	0
	12/13/2013	NS	NS	NS	NS		4.32	94.81	0
	3/31/2014	<1.0	<1.0	<1.0	<1.0		10.31	88.82	0
	6/13/2014	NS	NS	NS	NS		2.91	96.22	0
	9/2/2014	NS	NS	NS	NS		2.42	96.71	0
	12/9/2014	NS	NS	NS	NS		3.65	95.48	0
	3/12/2015	<1.0	<1.0	<1.0	<1.0		4.62	94.51	0
	6/9/2015	<1.0	<1.0	<1.0	<1.0		2.77	96.36	0
	9/28/2015	NS	NS	NS	NS		2.30	96.83	0
	12/3/2015	NS	NS	NS	NS		3.23	95.90	0
	1/27/2016	NS	NS	NS	NS		3.89	95.24	0
	4/28/2016	NS	NS	NS	NS		3.19	95.94	0
	7/27/2016	NS	NS	NS	NS		2.02	97.11	0
	10/19/2016	NS	NS	NS	NS		2.53	96.60	0
	1/18/2017	NS	NS	NS	NS		4.63	94.50	0
	4/5/2017	NS	NS	NS	NS		4.67	94.46	0
	4/26/2017	NS	NS	NS	NS		3.08	96.05	0
	10/13/2017	NS	NS	NS	NS		2.92	96.21	0
MW-3	9/1/2010	<1.0	<1.0	<1.0	<2.0	100.00	3.62	96.38	0
	12/27/2010	<1.0	<1.0	<1.0	<1.0		4.96	95.04	0
	3/9/2011	<1.0	<1.0	<1.0	<3.0		5.54	94.46	0
	6/20/2011	<1.0	<1.0	<1.0	<3.0		4.54	95.46	0
	9/23/2011	<1.0	<1.0	<1.0	<3.0		3.71	96.29	0
	12/19/2011	<1.0	<1.0	<1.0	<1.0		4.23	95.77	0
	3/8/2012	<1.0	<1.0	<1.0	<1.0		4.95	95.05	0
	6/4/2012	<1.0	<1.0	<1.0	<1.0		4.96	95.04	0
	9/29/2012	<1.0	<1.0	<1.0	<1.0		5.34	94.66	0
	12/13/2012	<1.0	<1.0	<1.0	<1.0		4.73	95.27	0
	3/5/2013	<1.0	<1.0	<1.0	<1.0		5.20	94.80	0
	6/26/2013	<1.0	<1.0	<1.0	<1.0		4.41	95.59	0
	9/9/2013	<1.0	<1.0	<1.0	<1.0		3.72	96.28	0
	12/13/2013	<1.0	<1.0	<1.0	<1.0		4.71	95.29	0
	3/31/2014	<1.0	<1.0	<1.0	<1.0		7.42	92.58	0
	6/13/2014	<1.0	<1.0	<1.0	<1.0		2.88	97.12	0
	9/2/2014	<1.0	<1.0	<1.0	<1.0		2.78	97.22	0
	12/9/2014	<1.0	<1.0	<1.0	<1.0		4.01	95.99	0
	3/12/2015	NF	NF	NF	NF		NF	NF	NF
	6/9/2015	<1.0	<1.0	<1.0	<1.0		2.96	97.04	0
	9/28/2015	<1.0	<1.0	<1.0	<1.0		2.53	97.47	0
	12/3/2015	<1.0	<1.0	<1.0	<1.0		3.53	96.47	0
	1/27/2016	<1.0	<1.0	<1.0	<1.0		4.08	95.92	0
	4/28/2016	<1.0	<1.0	<1.0	<1.0		3.39	96.61	0
	7/27/2016	<1.0	<1.0	<1.0	<1.0		2.15	97.85	0
	10/19/2016	<1.0	<1.0	<1.0	<1.0		2.67	97.33	0
	1/18/2017	<1.0	<1.0	<1.0	<1.0		4.77	95.23	0
	4/5/2017	<1.0	<1.0	<1.0	<1.0		4.80	95.20	0
	7/26/2017	<1.0	<1.0	<1.0	<1.0		3.19	96.81	0
	10/13/2017	<1.0	<1.0	<1.0	<1.0		3.01	96.99	0
MW-4	9/1/2010	10.4	<10	998	276	99.38	3.55	95.83	0

SAMPLE LOCATION	DATE	BENZENE (ug/L)	TOLUENE (ug/L)	ETHYL BENZENE (ug/L)	XYLENES (ug/L)	TOC ELEVATION (feet)	DEPTH TO GROUND WATER (ft)	GROUND WATER ELEVATION (ft)	FREE PRODUCT THICKNESS (ft)
MW-4	6/20/2011	WD	WD	WD	WD	WD	WD	WD	WD
MW-5	9/1/2010	4.98	<10	<10	2.41	97.03	1.74	95.29	0
	6/20/2011	<1.0	<1.0	<1.0	<3.0		2.44	94.59	0
	7/27/2011	<1.0	<1.0	<1.0	<3.0		2.19	94.84	0
	9/23/2011	2.3	<1.0	<1.0	<3.0		1.25	95.78	0
	12/19/2011	12.4	13.8	<1.0	<1.0		2.01	95.02	0
	3/8/2012	<1.0	<1.0	<1.0	<1.0		2.93	94.10	0
	6/4/2012	879	<1.0	<1.0	<1.0		2.76	94.27	0
	9/29/2012	<1.0	<1.0	<1.0	<1.0		NM	NM	0
	12/13/2012	<1.0	<1.0	<1.0	<1.0		2.73	94.30	0
	3/5/2013	<1.0	<1.0	<1.0	<1.0		3.22	93.81	0
	6/26/2013	<1.0	<1.0	<1.0	<1.0		2.69	94.34	0
	9/9/2013	<1.0	<1.0	<1.0	<1.0		1.61	95.42	0
	12/13/2013	<1.0	<1.0	<1.0	<1.0		2.53	94.50	0
	3/31/2014	<1.0	<1.0	<1.0	<1.0		3.29	93.74	0
	6/13/2014	480	<1.0	<1.0	<1.0		1.31	95.72	0
	9/2/2014	<1.0	<1.0	<1.0	<1.0		0.87	96.16	0
	12/9/2014	<1.0	<1.0	<1.0	<1.0		1.79	95.24	0
	3/12/2015	<1.0	<1.0	<1.0	<1.0		2.89	94.14	0
	6/9/2015	<1.0	<1.0	<1.0	<1.0		1.05	95.98	0
	9/28/2015	3.3	<1.0	<1.0	<1.0		too shallow	NM	0
	12/3/2015	<1.0	<1.0	<1.0	<1.0		1.48	95.55	0
	1/27/2016	<1.0	<1.0	<1.0	<1.0		2.18	94.85	0
	4/28/2016	23	<1.0	1.7	<1.0		1.49	95.54	0
	6/2/2016	130	<1.0	32	8.4		2.23	94.80	0
	7/27/2016	<1.0	<1.0	<1.0	<1.0		too shallow	NM	0
	10/19/2016	<1.0	<1.0	<1.0	<1.0		1.39	95.64	0
	1/18/2017	<1.0	<1.0	<1.0	<1.0		3.50	93.53	0
	4/5/2017	<1.0	<1.0	<1.0	<1.0		3.53	93.50	0
	7/26/2017	<1.0	<1.0	<1.0	<1.0		1.91	95.12	0
	10/13/2017	<1.0	<1.0	<1.0	<1.0		1.71	95.32	0
MW-6	9/1/2010	<1.0	<1.0	<1.0	2.69	97.17	1.89	95.28	0
	6/20/2011	20.9	<1.0	<1.0	<3.0		2.56	94.61	0
	7/27/2011	<1.0	<1.0	<1.0	<3.0		2.29	94.88	0
	9/23/2011	<1.0	<1.0	<1.0	<3.0		1.39	95.78	0
	12/19/2011	<1.0	<1.0	<1.0	<1.0		2.12	95.05	0
	3/8/2012	383	<1.0	<1.0	<1.0		3.02	94.15	0
	6/4/2012	1,052	<1.0	18.4	<1.0		2.91	94.26	0
	9/29/2012	445	1.5	<1.0	<1.0		2.91	94.26	0
	12/13/2012	<1.0	<1.0	<1.0	<1.0		2.93	94.24	0
	3/5/2013	<1.0	<1.0	<1.0	<1.0		3.26	93.91	0
	6/26/2013	7.7	<1.0	<1.0	<1.0		2.79	94.38	0
	7/3/2013	<1.0	<1.0	<1.0	<1.0		NM	NM	0
	9/9/2013	7.3	<1.0	<1.0	<1.0		1.78	95.39	0
	12/13/2013	<1.0	<1.0	<1.0	<1.0		2.63	94.54	0
	3/31/2014	1167	<1.0	<1.0	9		3.36	93.81	0
	6/13/2014	2558	<1.0	5.4	5.7		1.36	95.81	0
	9/2/2014	1445	2.4	12.9	15.1		0.82	96.35	0
	12/9/2014	<1.0	<1.0	<1.0	<1.0		1.88	95.29	0
	3/12/2015	1300	<1.0	2.6	<1.0		2.96	94.21	0
	6/9/2015	<1.0	<1.0	<1.0	24		1.14	96.03	0
	9/28/2015	<1.0	<1.0	<1.0	<1.0		too shallow	NM	0
	12/3/2015	<1.0	<1.0	<1.0	<1.0		1.57	95.60	0
	1/27/2016	<1.0	<1.0	<1.0	<1.0		2.26	94.91	0
	4/28/2016	150	<1.0	3.0	<1.0		1.56	95.61	0
	6/2/2016	620	<1.0	16	19		2.31	94.86	0
	7/27/2016	1200	<1.0	28	4.1		too shallow	NM	0
	10/19/2016	34	<1.0	<1.0	<1.0		1.38	95.79	0
	1/18/2017	<1.0	<1.0	<1.0	100		3.49	93.68	0
	4/5/2017	1000	<1.0	79	220		3.53	93.64	0
	7/26/2017	<1.0	<1.0	<1.0	<1.0		1.90	95.27	0
	10/13/2017	<1.0	<1.0	<1.0	<1.0		1.71	95.46	0

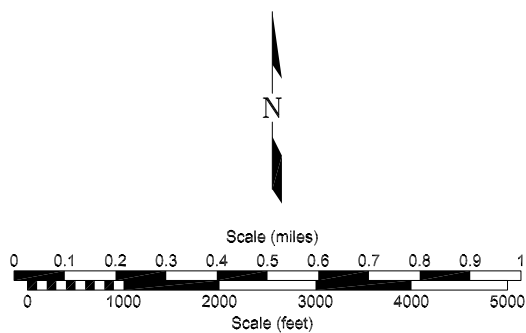
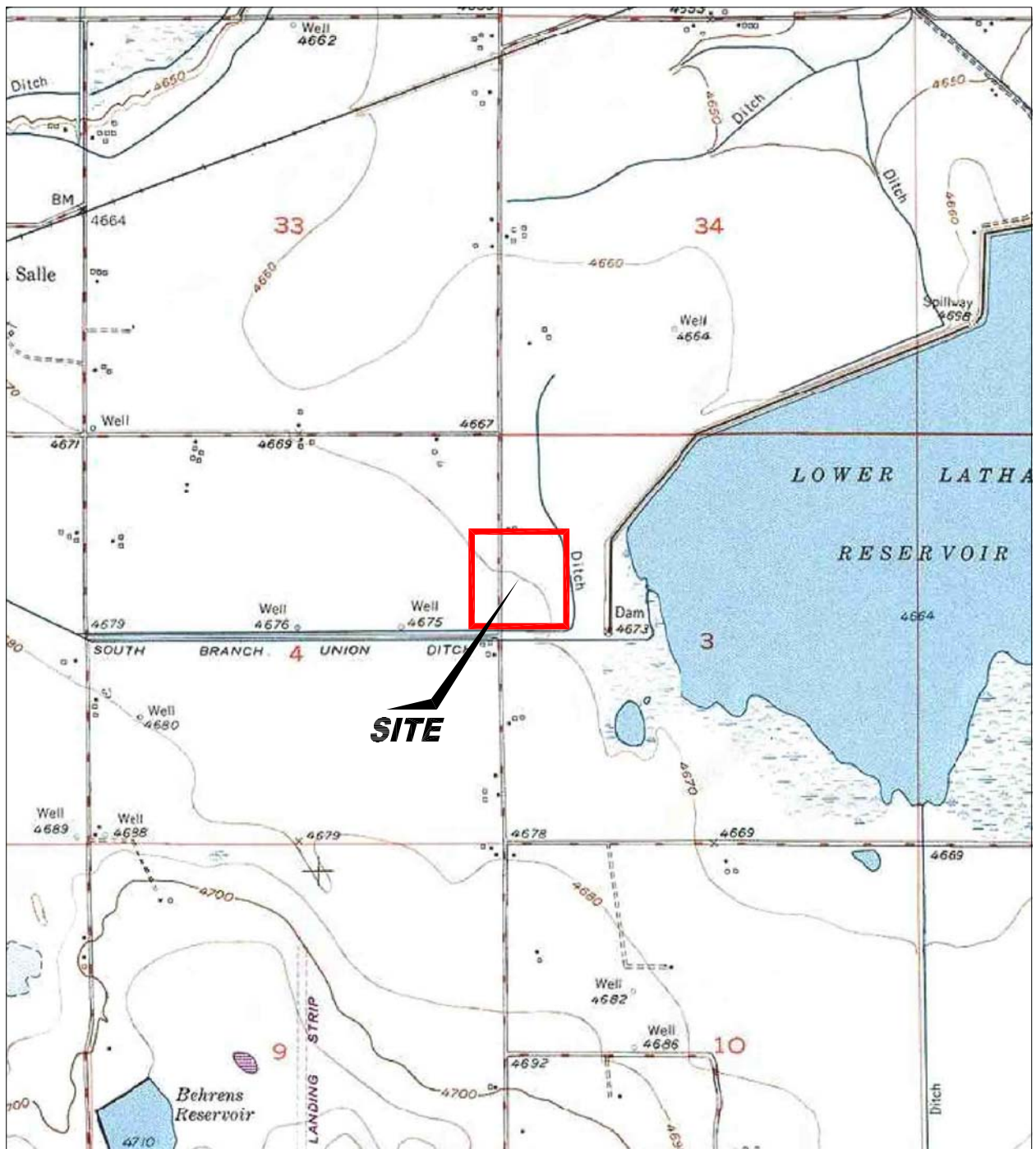
SAMPLE LOCATION	DATE	BENZENE (ug/L)	TOLUENE (ug/L)	ETHYL BENZENE (ug/L)	XYLENES (ug/L)	TOC ELEVATION (feet)	DEPTH TO GROUND WATER (ft)	GROUND WATER ELEVATION (ft)	FREE PRODUCT THICKNESS (ft)
MW-7	9/1/2010	<1.0	<1.0	<1.0	<2.0	97.18	1.71	95.47	0
	12/27/2010	<1.0	<1.0	<1.0	<1.0		2.79	94.39	0
	3/9/2011	367	<1.0	4.5	21.7		3.22	93.96	0
	3/24/2011	528	<1.0	16.6	67.7		NM	NM	0
	6/20/2011	5540	1.9	216	98.4		2.43	94.75	0
	7/27/2011	4830	1.2	279	91.1		2.18	95.00	0
	9/23/2011	4330	<1.0	248	5		1.32	95.86	0
	12/19/2011	6	<1.0	<1.0	<1.0		2.01	95.17	0
	3/8/2012	1673	<1.0	18.4	189		2.91	94.27	0
	6/4/2012	542	<1.0	12.3	<1.0		2.80	94.38	0
	9/29/2012	<1.0	<1.0	<1.0	<1.0		2.94	94.24	0
	12/13/2012	<1.0	<1.0	<1.0	<1.0		3.40	93.78	0
	3/5/2013	<1.0	<1.0	<1.0	<1.0		3.19	93.99	0
	6/26/2013	342	<1.0	<1.0	33.2		2.44	94.74	0
	7/3/2013	2.6	<1.0	<1.0	35.9		NM	NM	0
	9/9/2013	<1.0	<1.0	<1.0	<1.0		1.61	95.57	0
	12/13/2013	<1.0	<1.0	<1.0	<1.0		2.52	94.66	0
	3/31/2014	148	<1.0	94.4	169		3.21	93.97	0
	6/13/2014	818	<1.0	159	154		1.17	96.01	0
	9/2/2014	311	<1.0	15.3	23.4		0.74	96.44	0
	12/9/2014	<1.0	<1.0	<1.0	<1.0		1.78	95.40	0
	3/12/2015	<1.0	<1.0	<1.0	<1.0		2.86	94.32	0
	6/9/2015	<1.0	<1.0	<1.0	<1.0		1.10	96.08	0
	9/28/2015	21	<1.0	29	340		too shallow	NM	0
	12/3/2015	<1.0	<1.0	<1.0	20		1.44	95.74	0
	1/27/2016	5.2	<1.0	<1.0	38		2.21	94.97	0
	4/28/2016	1.6	<1.0	5.1	<1.0		1.51	95.67	0
	6/2/2016	<1.0	<1.0	<1.0	<1.0		2.25	94.93	0
	7/27/2016	<1.0	<1.0	<1.0	1.4		too shallow	NM	0
	10/19/2016	<1.0	<1.0	<1.0	<1.0		1.41	95.77	0
	1/18/2017	11	<1.0	<1.0	<1.0		3.51	93.67	0
	4/5/2017	2.1	<1.0	<1.0	<1.0		3.55	93.63	0
	7/26/2017	<1.0	<1.0	<1.0	<1.0		1.95	95.23	0
	10/13/2017	<1.0	<1.0	<1.0	<1.0		1.75	95.43	0
MW-8	9/1/2010	<1.0	<1.0	<1.0	<2.0	97.00	1.58	95.42	0
	12/27/2010	<1.0	<1.0	<1.0	<1.0		2.60	94.40	0
	3/9/2011	<1.0	<1.0	<1.0	<3.0		3.49	93.51	0
	6/20/2011	<1.0	<1.0	<1.0	<3.0		2.27	94.73	0
	7/27/2011	<1.0	<1.0	<1.0	<3.0		1.99	95.01	0
	9/23/2011	<1.0	<1.0	<1.0	<3.0		1.16	95.84	0
	12/19/2011	<1.0	<1.0	<1.0	<1.0		1.82	95.18	0
	3/8/2012	<1.0	<1.0	<1.0	<1.0		2.70	94.30	0
	6/4/2012	<1.0	<1.0	<1.0	<1.0		2.62	94.38	0
	9/29/2012	1.5	<1.0	<1.0	<1.0		2.66	94.34	0
	12/13/2012	<1.0	<1.0	<1.0	<1.0		2.45	94.55	0
	3/5/2013	<1.0	<1.0	<1.0	<1.0		2.92	94.08	0
	6/26/2013	12.8	<1.0	<1.0	1.6		2.41	94.59	0
	7/3/2013	30.4	<1.0	<1.0	3.6		NM	NM	0
	9/9/2013	<1.0	<1.0	<1.0	<1.0		1.47	95.53	0
	12/13/2013	<1.0	<1.0	<1.0	<1.0		2.34	94.66	0
	3/31/2014	<1.0	<1.0	<1.0	<1.0		3.23	93.77	0
	6/13/2014	<1.0	<1.0	<1.0	<1.0		0.98	96.02	0
	9/2/2014	<1.0	<1.0	<1.0	<1.0		0.54	96.46	0
	12/9/2014	<1.0	<1.0	<1.0	<1.0		1.56	95.44	0
	3/12/2015	<1.0	<1.0	<1.0	<1.0		2.65	94.35	0
	6/9/2015	<1.0	<1.0	<1.0	<1.0		< probe	NM	0
	9/28/2015	<1.0	<1.0	<1.0	<1.0		too shallow	NM	0
	12/3/2015	<1.0	<1.0	<1.0	<1.0		1.27	95.73	0
	1/27/2016	<1.0	<1.0	<1.0	<1.0		1.98	95.02	0
	4/28/2016	<1.0	<1.0	<1.0	<1.0		1.29	95.71	0
	6/2/2016	<1.0	<1.0	<1.0	<1.0		2.02	94.98	0
	7/27/2016	<1.0	<1.0	<1.0	<1.0		too shallow	NM	0

SAMPLE LOCATION	DATE	BENZENE (ug/L)	TOLUENE (ug/L)	ETHYL BENZENE (ug/L)	XYLENES (ug/L)	TOC ELEVATION (feet)	DEPTH TO GROUND WATER (ft)	GROUND WATER ELEVATION (ft)	FREE PRODUCT THICKNESS (ft)
MW-8	10/19/2016	1.6	<1.0	<1.0	2.6		1.37	95.63	0
	1/18/2017	<1.0	<1.0	<1.0	<1.0		3.46	93.54	0
	4/5/2017	<1.0	<1.0	<1.0	<1.0		3.49	93.51	0
	7/26/2017	<1.0	<1.0	<1.0	2.3		1.81	95.19	0
	10/13/2017	<1.0	<1.0	<1.0	<1.0		1.65	95.35	0
MW-9	7/27/2016	<1.0	<1.0	<1.0	<1.0	99.57	2.35	97.22	0
	10/19/2016	<1.0	<1.0	<1.0	<1.0		2.87	96.70	0
	1/18/2017	<b>24</b>	<1.0	6.4	61		4.97	94.60	0
	4/5/2017	<1.0	<1.0	33	110		5.02	94.55	0
	7/26/2017	<1.0	<1.0	<1.0	<1.0		3.40	96.17	0
MW-10	10/13/2017	<1.0	<1.0	<1.0	<1.0		3.24	96.33	0
	7/27/2016	<1.0	<1.0	<1.0	<1.0	99.58	2.29	97.29	0
	10/19/2016	<1.0	<1.0	<1.0	<1.0		2.81	96.77	0
	1/18/2017	<1.0	<1.0	<1.0	<1.0		4.92	94.66	0
	4/5/2017	1.7	<1.0	<1.0	<1.0		4.97	94.61	0
MW-11	7/26/2017	<1.0	<1.0	<1.0	<1.0		3.34	96.24	0
	10/13/2017	<1.0	<1.0	<1.0	<1.0		3.19	96.39	0
	7/27/2016	<b>10</b>	<1.0	<1.0	140	99.33	1.93	97.40	0
	10/19/2016	<b>22</b>	<1.0	12	110		2.44	96.89	0
	1/18/2017	<1.0	<1.0	<1.0	<1.0		4.54	94.79	0
MW-12	4/5/2017	<b>22</b>	<1.0	1.0	35		4.58	94.75	0
	7/26/2017	<1.0	<1.0	<1.0	<1.0		2.95	96.38	0
	10/13/2017	<1.0	<1.0	<1.0	<1.0		2.77	96.56	0
	7/27/2016	<1.0	<1.0	<1.0	92	99.37	2.06	97.31	0
	10/19/2016	<b>34</b>	<1.0	50	520		2.57	96.80	0
MW-13	1/18/2017	4.5	<1.0	24	240		4.68	94.69	0
	4/5/2017	<1.0	<1.0	<1.0	<1.0		4.72	94.65	0
	7/26/2017	<b>14</b>	<1.0	13	61		3.08	96.29	0
	10/13/2017	1.5	<1.0	<1.0	7.3		2.91	96.46	0
	7/27/2016	<1.0	<1.0	<1.0	52	99.56	2.19	97.37	0
MW-14	10/19/2016	1.3	<1.0	<1.0	7.4		2.70	96.86	0
	1/18/2017	<1.0	<1.0	<1.0	<1.0		4.82	94.74	0
	4/5/2017	<1.0	<1.0	3.0	2.3		4.87	94.69	0
	7/26/2017	<1.0	<1.0	<1.0	<1.0		3.21	96.35	0
	10/13/2017	<1.0	<1.0	<1.0	<1.0		3.03	96.53	0
MW-15	7/27/2016	<1.0	<1.0	<1.0	<1.0	99.74	2.53	97.21	0
	10/19/2016	<1.0	<1.0	<1.0	<1.0		3.04	96.70	0
	1/18/2017	<1.0	<1.0	<1.0	<1.0		5.15	94.59	0
	4/5/2017	<1.0	<1.0	<1.0	<1.0		5.19	94.55	0
	7/26/2017	<1.0	<1.0	<1.0	<1.0		3.55	96.19	0
MW-15	10/13/2017	<1.0	<1.0	<1.0	<1.0		3.38	96.36	0
	7/27/2016	<1.0	<1.0	<1.0	<1.0	99.76	2.26	97.50	0
	10/19/2016	<1.0	<1.0	<1.0	<1.0		2.78	96.98	0
	1/18/2017	2.1	<1.0	8.0	98		2.97	96.79	0
	4/5/2017	<1.0	<1.0	<1.0	<1.0		3.02	96.74	0
MW-15	7/26/2017	<1.0	<1.0	<1.0	<1.0		1.45	98.31	0
	10/13/2017	<1.0	<1.0	<1.0	<1.0		1.29	98.47	0
COGCC Table 910-1 Limits		5	560	700	1,400				

Values in bold exceed the COGCC concentrations

WD - Well Destroyed

NS - Not Sampled



USGS 7.5 MINUTE SERIES (TOPOGRAPHIC)

Figure 1  
SITE LOCATION MAP

Noble Energy  
Romero Angelino 1,2  
La Salle, Colorado

Project No.  
C010-009

Prepared by

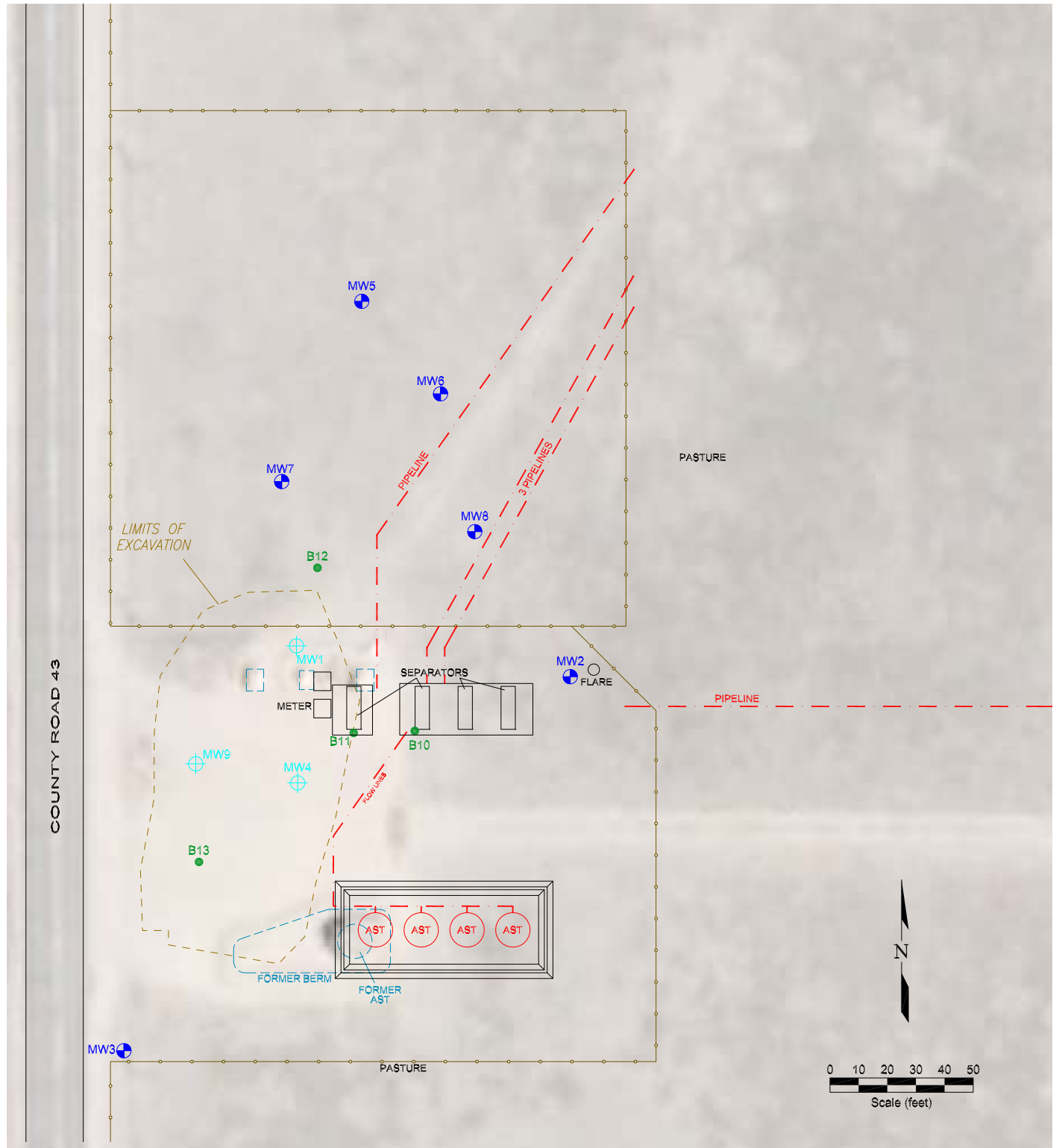
Drawn by  
JMA

Date  
9/15/10








Reviewed by

Filename  
10009T





#### LEGEND

-  MONITORING WELL
-  DESTROYED MONITORING WELL
-  SOIL BORING
-  FENCE LINE
-  PIPELINE
-  FORMER FACILITY
-  ABOVE GROUND STORAGE TANK

### Figure 2 SITE MAP

**Noble Energy**  
Romero Angelino 1,2  
La Salle, Colorado

Project No.  
**C010-009**

Prepared by

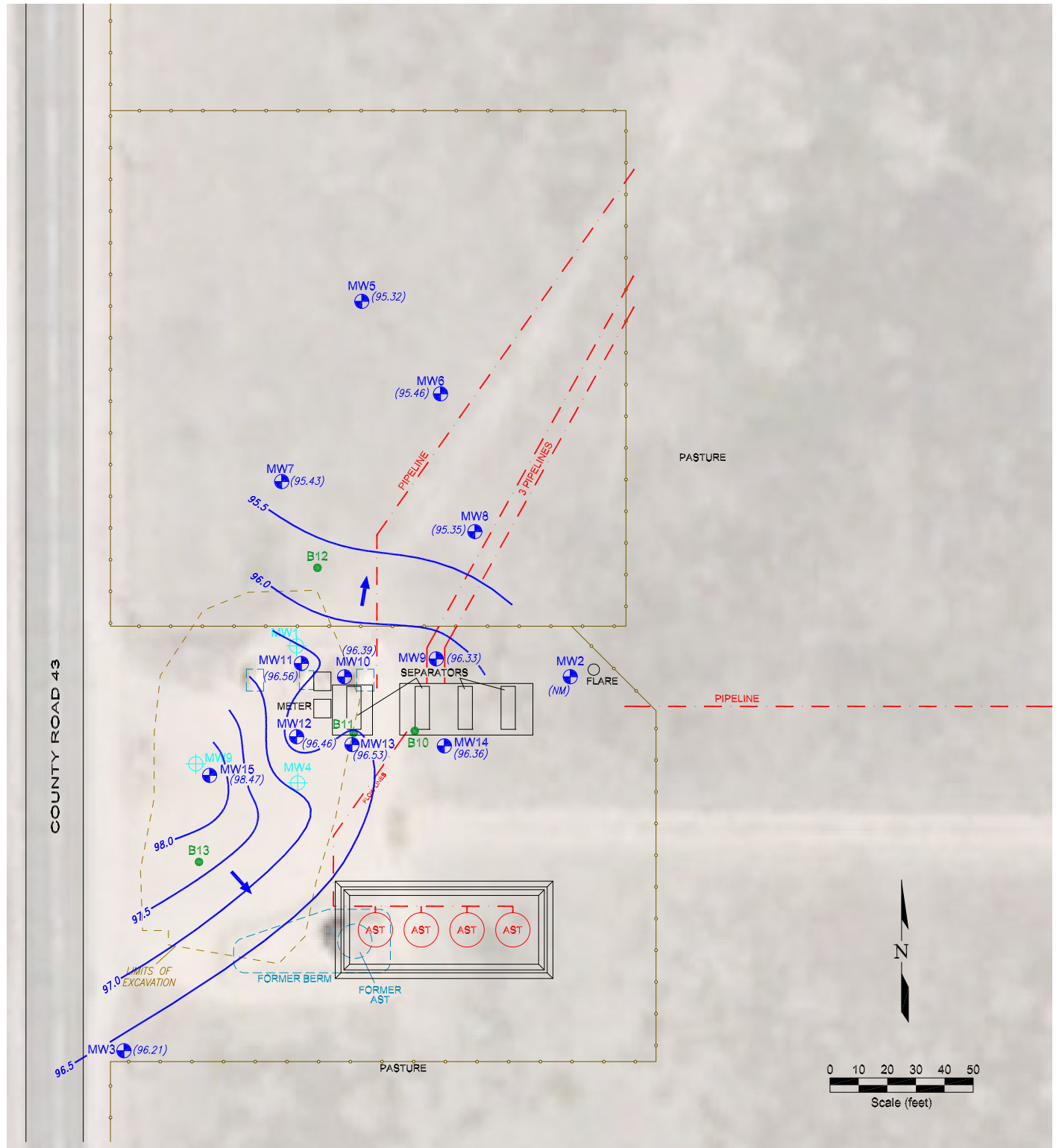
Drawn by  
**JMA**

Date  
**12/19/13**

Reviewed by

Filename  
**10009R**





#### LEGEND

	MONITORING WELL	(95.42)	GROUND WATER ELEVATION (ft above arbitrary datum)
	DESTROYED MONITORING WELL	NW	NOT MEASURED
	SOIL BORING	94.5	WATER TABLE CONTOUR
	FENCE LINE		GROUND WATER FLOW DIRECTION
	PIPELINE		
	FORMER FACILITY		
	ABOVE GROUND STORAGE TANK		

Figure 3  
INFERRED GROUNDWATER CONTOUR  
OCTOBER 13, 2017

Noble Energy  
Romero Angelino 1,2  
La Salle, Colorado

Project No. C010-009	Prepared by JMA	Drawn by JMA	
Date 11/6/17	Reviewed by	Filename 10009R	



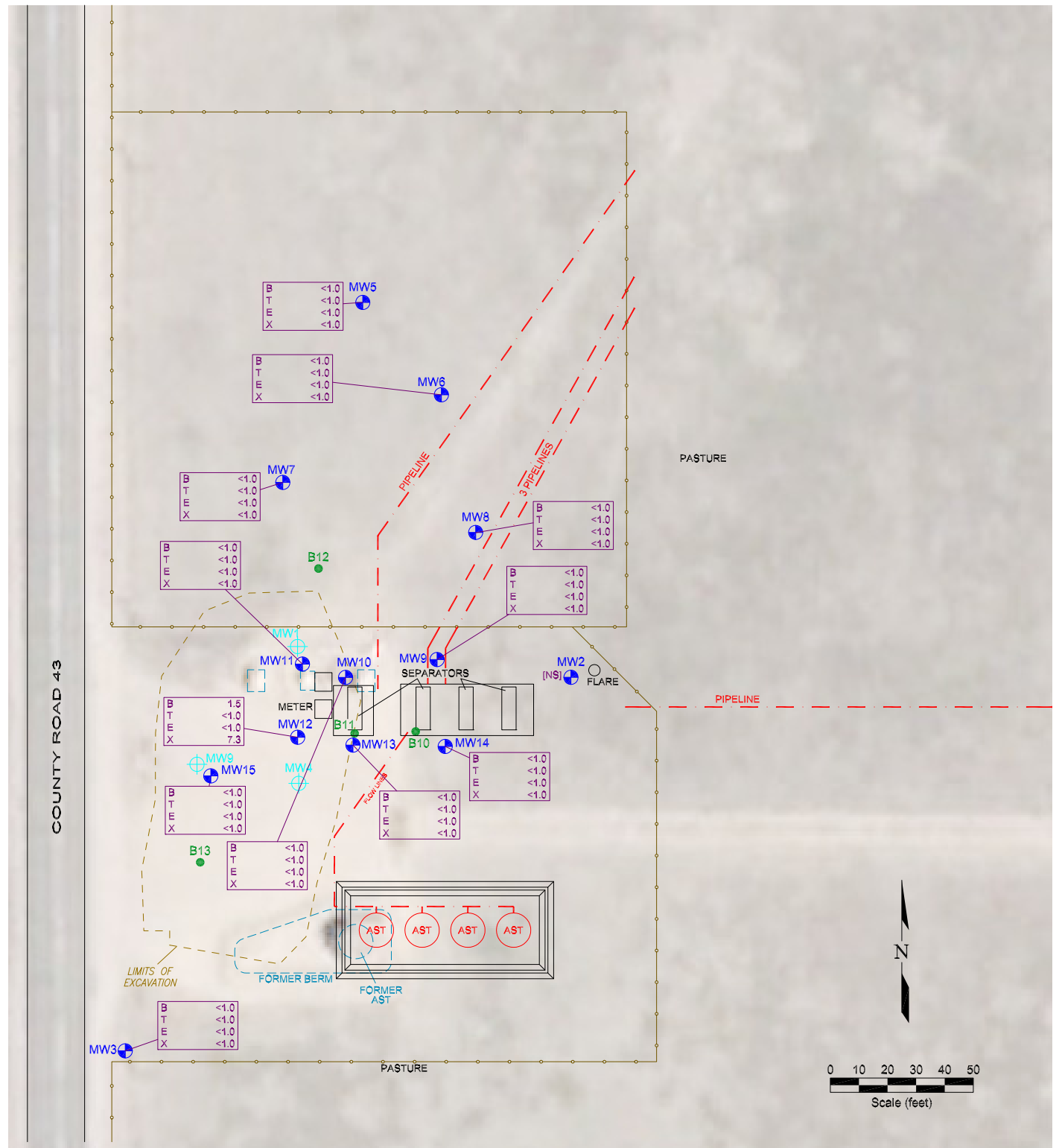


Figure 4  
GROUND WATER CHEMISTRY MAP  
OCTOBER 13, 2017

Noble Energy  
Romero Angelino 1,2  
La Salle, Colorado

Project No.  
C010-009

Prepared by  
JMA

Drawn by  
JMA

Date  
11/6/17

Reviewed by

Filename  
10009R



# Summit Scientific

---

741 Corporate Circle – Suite I ♦ Golden, Colorado 80401

303.277.9310 - laboratory ♦ 303.277.9531 - fax

October 19, 2017

Paul Henehan  
Fremont Environmental  
1759 Redwing Lane  
Broomfield, CO 80020  
RE: Noble - Romero #1

Enclosed are the results of analyses for samples received by Summit Scientific on 10/13/17 17:00. If you have any questions concerning this report, please feel free to contact me.

Sincerely,

A handwritten signature in black ink, appearing to read 'P. Shrewsbury', with a stylized, cursive script.

Paul Shrewsbury For Ben Shrewsbury  
Laboratory Manager



Fremont Environmental  
1759 Redwing Lane  
Broomfield CO, 80020

Project: Noble - Romero #1

Project Number: C010-009  
Project Manager: Paul Henehan

**Reported:**  
10/19/17 10:18

### ANALYTICAL REPORT FOR SAMPLES

Sample ID	Laboratory ID	Matrix	Date Sampled	Date Received
MW3	1710148-01	Water	10/13/17 00:00	10/13/17 17:00
MW5	1710148-02	Water	10/13/17 00:00	10/13/17 17:00
MW6	1710148-03	Water	10/13/17 00:00	10/13/17 17:00
MW7	1710148-04	Water	10/13/17 00:00	10/13/17 17:00
MW8	1710148-05	Water	10/13/17 00:00	10/13/17 17:00
MW9	1710148-06	Water	10/13/17 00:00	10/13/17 17:00
MW10	1710148-07	Water	10/13/17 00:00	10/13/17 17:00
MW11	1710148-08	Water	10/13/17 00:00	10/13/17 17:00
MW12	1710148-09	Water	10/13/17 00:00	10/13/17 17:00
MW13	1710148-10	Water	10/13/17 00:00	10/13/17 17:00
MW14	1710148-11	Water	10/13/17 00:00	10/13/17 17:00
MW15	1710148-12	Water	10/13/17 00:00	10/13/17 17:00

Summit Scientific

*The results in this report apply to the samples analyzed in accordance with the chain of custody document. This analytical report must be reproduced in its entirety.*

# Summit Scientific

1710148.1

S<sub>2</sub>

741 Corporate Circle, Suite J ♦ Golden, Colorado 80401  
303-277-9310 ♦ 303-374-5933

Client: Fremont Environmental

Address: P.O. Box 1289

City/State/Zip: PO Box 1829 Wellington, CO 80549

Phone: 303-956-8714

Sampler Name:

Fax:

Project Manager: Paul Henehan

E-Mail: paulh@fremontenv.com

Page 1 of 2

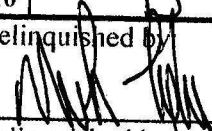

Project Name:

Project Number:

Noble Romero #1  
1010-009

ID	Sample Description	Date Sampled	Time Sampled	# of containers	Preservative				Matrix				Analysis Requested						Special Instructions
					HCl	HNO <sub>3</sub>	None	Other (Specify)	Groundwater	Soil	Air-Canister #	Other (Specify)	BTEX	GRO/DRO	Napthalene	SAR	EC	Ph	
1	MW 3	10/13/17		2															
2																			
3																			
4																			
5																			
6																			
7																			
8																			
9																			
10																			

Relinquished by: 	Date/Time: 10/13/17 17:00	Received by: 	Date/Time: 10-13-17 17:00	<b>Turn Around Time</b> (Check) Same Day _____ 72 hours 24 hours _____ <u>Standard</u> 48 hours _____ <b>Sample Integrity:</b> Temperature Upon Receipt: 6.6 Intact: <u>Yes</u> No	Notes:
Relinquished by:	Date/Time:	Received by:	Date/Time:		
Relinquished by:	Date/Time:	Received by:	Date/Time:		

# Summit Scientific

1710148.2

S<sub>2</sub>

741 Corporate Circle, Suite J ♦ Golden, Colorado 80401  
303-277-9310 ♦ 303-374-5933

Client: Fremont Environmental

Address: P.O. Box 1289

City/State/Zip: PO Box 1829 Wellington, CO 80549

Phone: 303-956-8714

Sampler Name: Mark T

(noble)

Project Manager: Paul Henehan

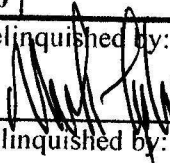
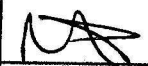
E-Mail: paulh@fremontenv.com

Page 2 of 2

Project Name: Noble - Romero #1

Project Number: 1010-009

ID	Sample Description	Date Sampled	Time Sampled	# of containers	Preservative				Matrix				Analysis Requested							Special Instructions
					HCl	HNO <sub>3</sub>	None	Other (Specify)	Groundwater	Soil	Air-Canister #	Other (Specify)	BTEX	GRO/DRO	Napthalene	SAR	EC	Ph		
1	mw 14	10/13/17		2			✓		✓				✓							
2	15	"		2			✓		✓				✓							
3																				
4																				
5																				
6																				
7																				
8																				
9																				
10																				

Relinquished by: 	Date/Time: 10/13/17 17:00	Received by: 	Date/Time: 10-13-17 17:00	<b>Turn Around Time</b> (Check) Same Day _____ 72 hours _____ 24 hours _____ <b>Standard</b> 48 hours _____ <b>Sample Integrity:</b> Temperature Upon Receipt: 6.6 Intact: <b>Yes</b> No	Notes:
Relinquished by:	Date/Time:	Received by:	Date/Time:		
Relinquished by:	Date/Time:	Received by:	Date/Time:		

1710148

## Sample Receipt Checklist

S2 Work Order: \_\_\_\_\_

Client: FREMONT / NOBLE Client Project ID: NOBLE-ROMERO #1Shipped Via: H.D.  
(UPS, FedEx, Hand Delivered, Pick-up, etc.)

Airbill #: \_\_\_\_\_

Matrix (check all that apply):      Air      Soil/Solid   X   Water      Other: \_\_\_\_\_  
(Describe)

Cooler ID					
Temp (°C)	6.6				

Thermometer ID: 61857155-K

	Yes	No	N/A	Comments (if any)
If samples require cooling, was the temperature at 4°C +/- 2°C <sup>(1)</sup> ?				
NOTE: If samples are delivered the same day of sampling, this requirement is met provided that there is evidence that cooling has begun.	X			
Were all samples received intact <sup>(1)</sup> ?	X			
Was adequate sample volume provided <sup>(1)</sup> ?	X			
If custody seals are present, are they intact <sup>(1)</sup> ?			X	
Are short holding time analytes or samples with HTs due within 48 hours present?			X	
Is a chain-of-custody (COC) form present and filled out completely <sup>(1)</sup> ?	X			
Does the COC agree with the number and type of sample bottles received <sup>(1)</sup> ?	X			
Do the sample IDs on the bottle labels match the COC <sup>(1)</sup> ?	X			
Is the COC properly relinquished by the client w/ date and time recorded <sup>(1)</sup> ?	X			
For volatiles in water – is there headspace present? <b>If yes, contact client and note in narrative.</b>		X		
Are samples preserved that require preservation (excluding cooling) <sup>(1)</sup> ?				
Note the type of preservative in the Comments column – HCl, H2SO4, NaOH, HNO3, ect			X	
If samples are acid preserved for metals, is the pH ≤ 2 <sup>(1)</sup> ?			X	
Record the pH in Comments.				
If dissolved metals are requested, were samples field filtered?			X	
Additional Comments (if any):				

<sup>(1)</sup> If NO, then contact the client before proceeding with analysis and note in case narrative.

Muri P.  
Custodian Printed Name

10-13-17  
Signature or Initials of Custodian

18:00  
Date/Time



Fremont Environmental  
1759 Redwing Lane  
Broomfield CO, 80020

Project: Noble - Romero #1  
Project Number: C010-009  
Project Manager: Paul Henehan

**Reported:**  
10/19/17 10:18

**MW3**  
**1710148-01 (Water)**

**Summit Scientific**

**Volatile Organic Compounds by EPA Method 8260B**

Date Sampled: **10/13/17 00:00**

Analyte	Result	Reporting Limit	Units	Dilution	Batch	Prepared	Analyzed	Method	Notes
Benzene	ND	1.0	ug/l	1	1710155	10/16/17	10/16/17	EPA 8260B	
Toluene	ND	1.0	"	"	"	"	"	"	
Ethylbenzene	ND	1.0	"	"	"	"	"	"	
Xylenes (total)	ND	2.0	"	"	"	"	"	"	

Date Sampled: **10/13/17 00:00**

Analyte	Result	Reporting Limit	Units	Dilution	Batch	Prepared	Analyzed	Method	Notes
Surrogate: 1,2-Dichloroethane-d4		110 %	37-154		"	"	"	"	
Surrogate: Toluene-d8		102 %	45-149		"	"	"	"	
Surrogate: 4-Bromofluorobenzene		96.2 %	45-146		"	"	"	"	

Summit Scientific

*The results in this report apply to the samples analyzed in accordance with the chain of custody document. This analytical report must be reproduced in its entirety.*



Fremont Environmental  
1759 Redwing Lane  
Broomfield CO, 80020

Project: Noble - Romero #1  
Project Number: C010-009  
Project Manager: Paul Henehan

**Reported:**  
10/19/17 10:18

**MW5**  
**1710148-02 (Water)**

**Summit Scientific**

**Volatile Organic Compounds by EPA Method 8260B**

Date Sampled: **10/13/17 00:00**

Analyte	Result	Reporting Limit	Units	Dilution	Batch	Prepared	Analyzed	Method	Notes
Benzene	ND	1.0	ug/l	1	1710155	10/17/17	10/17/17	EPA 8260B	
Toluene	ND	1.0	"	"	"	"	"	"	
Ethylbenzene	ND	1.0	"	"	"	"	"	"	
Xylenes (total)	ND	2.0	"	"	"	"	"	"	

Date Sampled: **10/13/17 00:00**

Analyte	Result	Reporting Limit	Units	Dilution	Batch	Prepared	Analyzed	Method	Notes
Surrogate: 1,2-Dichloroethane-d4		117 %	37-154		"	"	"	"	
Surrogate: Toluene-d8		103 %	45-149		"	"	"	"	
Surrogate: 4-Bromofluorobenzene		95.1 %	45-146		"	"	"	"	

Summit Scientific

*The results in this report apply to the samples analyzed in accordance with the chain of custody document. This analytical report must be reproduced in its entirety.*





Fremont Environmental  
1759 Redwing Lane  
Broomfield CO, 80020

Project: Noble - Romero #1  
Project Number: C010-009  
Project Manager: Paul Henehan

**Reported:**  
10/19/17 10:18

**MW6**  
**1710148-03 (Water)**

**Summit Scientific**

**Volatile Organic Compounds by EPA Method 8260B**

Date Sampled: **10/13/17 00:00**

Analyte	Result	Reporting Limit	Units	Dilution	Batch	Prepared	Analyzed	Method	Notes
Benzene	ND	1.0	ug/l	1	1710155	10/17/17	10/17/17	EPA 8260B	
Toluene	ND	1.0	"	"	"	"	"	"	
Ethylbenzene	ND	1.0	"	"	"	"	"	"	
Xylenes (total)	ND	2.0	"	"	"	"	"	"	

Date Sampled: **10/13/17 00:00**

Analyte	Result	Reporting Limit	Units	Dilution	Batch	Prepared	Analyzed	Method	Notes
Surrogate: 1,2-Dichloroethane-d4		108 %	37-154		"	"	"	"	
Surrogate: Toluene-d8		101 %	45-149		"	"	"	"	
Surrogate: 4-Bromofluorobenzene		96.5 %	45-146		"	"	"	"	

Summit Scientific

*The results in this report apply to the samples analyzed in accordance with the chain of custody document. This analytical report must be reproduced in its entirety.*



Fremont Environmental  
1759 Redwing Lane  
Broomfield CO, 80020

Project: Noble - Romero #1  
Project Number: C010-009  
Project Manager: Paul Henehan

**Reported:**  
10/19/17 10:18

**MW7**  
**1710148-04 (Water)**

**Summit Scientific**

**Volatile Organic Compounds by EPA Method 8260B**

Date Sampled: **10/13/17 00:00**

Analyte	Result	Reporting Limit	Units	Dilution	Batch	Prepared	Analyzed	Method	Notes
Benzene	ND	1.0	ug/l	1	1710155	10/17/17	10/17/17	EPA 8260B	
Toluene	ND	1.0	"	"	"	"	"	"	
Ethylbenzene	ND	1.0	"	"	"	"	"	"	
Xylenes (total)	ND	2.0	"	"	"	"	"	"	

Date Sampled: **10/13/17 00:00**

Analyte	Result	Reporting Limit	Units	Dilution	Batch	Prepared	Analyzed	Method	Notes
Surrogate: 1,2-Dichloroethane-d4		111 %	37-154		"	"	"	"	
Surrogate: Toluene-d8		102 %	45-149		"	"	"	"	
Surrogate: 4-Bromofluorobenzene		96.2 %	45-146		"	"	"	"	

Summit Scientific

*The results in this report apply to the samples analyzed in accordance with the chain of custody document. This analytical report must be reproduced in its entirety.*



Fremont Environmental  
1759 Redwing Lane  
Broomfield CO, 80020

Project: Noble - Romero #1  
Project Number: C010-009  
Project Manager: Paul Henehan

**Reported:**  
10/19/17 10:18

**MW8**  
**1710148-05 (Water)**

**Summit Scientific**

**Volatile Organic Compounds by EPA Method 8260B**

Date Sampled: **10/13/17 00:00**

Analyte	Result	Reporting Limit	Units	Dilution	Batch	Prepared	Analyzed	Method	Notes
Benzene	ND	1.0	ug/l	1	1710155	10/17/17	10/17/17	EPA 8260B	
Toluene	ND	1.0	"	"	"	"	"	"	
Ethylbenzene	ND	1.0	"	"	"	"	"	"	
Xylenes (total)	ND	2.0	"	"	"	"	"	"	

Date Sampled: **10/13/17 00:00**

Analyte	Result	Reporting Limit	Units	Dilution	Batch	Prepared	Analyzed	Method	Notes
Surrogate: 1,2-Dichloroethane-d4		115 %	37-154		"	"	"	"	
Surrogate: Toluene-d8		102 %	45-149		"	"	"	"	
Surrogate: 4-Bromofluorobenzene		92.8 %	45-146		"	"	"	"	

Summit Scientific

*The results in this report apply to the samples analyzed in accordance with the chain of custody document. This analytical report must be reproduced in its entirety.*



Fremont Environmental  
1759 Redwing Lane  
Broomfield CO, 80020

Project: Noble - Romero #1  
Project Number: C010-009  
Project Manager: Paul Henehan

**Reported:**  
10/19/17 10:18

**MW9**  
**1710148-06 (Water)**

**Summit Scientific**

**Volatile Organic Compounds by EPA Method 8260B**

Date Sampled: **10/13/17 00:00**

Analyte	Result	Reporting Limit	Units	Dilution	Batch	Prepared	Analyzed	Method	Notes
Benzene	ND	1.0	ug/l	1	1710155	10/17/17	10/17/17	EPA 8260B	
Toluene	ND	1.0	"	"	"	"	"	"	
Ethylbenzene	ND	1.0	"	"	"	"	"	"	
Xylenes (total)	ND	2.0	"	"	"	"	"	"	

Date Sampled: **10/13/17 00:00**

Analyte	Result	Reporting Limit	Units	Dilution	Batch	Prepared	Analyzed	Method	Notes
Surrogate: 1,2-Dichloroethane-d4		113 %	37-154		"	"	"	"	
Surrogate: Toluene-d8		102 %	45-149		"	"	"	"	
Surrogate: 4-Bromofluorobenzene		96.9 %	45-146		"	"	"	"	

Summit Scientific

*The results in this report apply to the samples analyzed in accordance with the chain of custody document. This analytical report must be reproduced in its entirety.*



Fremont Environmental  
1759 Redwing Lane  
Broomfield CO, 80020

Project: Noble - Romero #1  
Project Number: C010-009  
Project Manager: Paul Henehan

**Reported:**  
10/19/17 10:18

**MW10**  
**1710148-07 (Water)**

**Summit Scientific**

**Volatile Organic Compounds by EPA Method 8260B**

Date Sampled: **10/13/17 00:00**

Analyte	Result	Reporting Limit	Units	Dilution	Batch	Prepared	Analyzed	Method	Notes
Benzene	ND	1.0	ug/l	1	1710155	10/17/17	10/17/17	EPA 8260B	
Toluene	ND	1.0	"	"	"	"	"	"	
Ethylbenzene	ND	1.0	"	"	"	"	"	"	
Xylenes (total)	ND	2.0	"	"	"	"	"	"	

Date Sampled: **10/13/17 00:00**

Analyte	Result	Reporting Limit	Units	Dilution	Batch	Prepared	Analyzed	Method	Notes
Surrogate: 1,2-Dichloroethane-d4		114 %	37-154		"	"	"	"	
Surrogate: Toluene-d8		101 %	45-149		"	"	"	"	
Surrogate: 4-Bromofluorobenzene		92.5 %	45-146		"	"	"	"	

Summit Scientific

*The results in this report apply to the samples analyzed in accordance with the chain of custody document. This analytical report must be reproduced in its entirety.*



Fremont Environmental  
1759 Redwing Lane  
Broomfield CO, 80020

Project: Noble - Romero #1  
Project Number: C010-009  
Project Manager: Paul Henehan

**Reported:**  
10/19/17 10:18

**MW11**  
**1710148-08 (Water)**

**Summit Scientific**

**Volatile Organic Compounds by EPA Method 8260B**

Date Sampled: **10/13/17 00:00**

Analyte	Result	Reporting Limit	Units	Dilution	Batch	Prepared	Analyzed	Method	Notes
Benzene	ND	1.0	ug/l	1	1710155	10/17/17	10/17/17	EPA 8260B	
Toluene	ND	1.0	"	"	"	"	"	"	
Ethylbenzene	ND	1.0	"	"	"	"	"	"	
Xylenes (total)	ND	2.0	"	"	"	"	"	"	

Date Sampled: **10/13/17 00:00**

Analyte	Result	Reporting Limit	Units	Dilution	Batch	Prepared	Analyzed	Method	Notes
Surrogate: 1,2-Dichloroethane-d4		110 %	37-154		"	"	"	"	
Surrogate: Toluene-d8		98.6 %	45-149		"	"	"	"	
Surrogate: 4-Bromofluorobenzene		98.9 %	45-146		"	"	"	"	

Summit Scientific

*The results in this report apply to the samples analyzed in accordance with the chain of custody document. This analytical report must be reproduced in its entirety.*



Fremont Environmental  
1759 Redwing Lane  
Broomfield CO, 80020

Project: Noble - Romero #1  
Project Number: C010-009  
Project Manager: Paul Henehan

**Reported:**  
10/19/17 10:18

**MW12**  
**1710148-09 (Water)**

**Summit Scientific**

**Volatile Organic Compounds by EPA Method 8260B**

Date Sampled: **10/13/17 00:00**

Analyte	Result	Reporting Limit	Units	Dilution	Batch	Prepared	Analyzed	Method	Notes
<b>Benzene</b>	<b>1.5</b>	1.0	ug/l	1	1710155	10/17/17	10/17/17	EPA 8260B	
Toluene	ND	1.0	"	"	"	"	"	"	
Ethylbenzene	ND	1.0	"	"	"	"	"	"	
<b>Xylenes (total)</b>	<b>7.3</b>	2.0	"	"	"	"	"	"	

Date Sampled: **10/13/17 00:00**

Analyte	Result	Reporting Limit	Units	Dilution	Batch	Prepared	Analyzed	Method	Notes
Surrogate: 1,2-Dichloroethane-d4		126 %	37-154		"	"	"	"	
Surrogate: Toluene-d8		103 %	45-149		"	"	"	"	
Surrogate: 4-Bromofluorobenzene		112 %	45-146		"	"	"	"	

Summit Scientific

*The results in this report apply to the samples analyzed in accordance with the chain of custody document. This analytical report must be reproduced in its entirety.*



Fremont Environmental  
1759 Redwing Lane  
Broomfield CO, 80020

Project: Noble - Romero #1  
Project Number: C010-009  
Project Manager: Paul Henehan

**Reported:**  
10/19/17 10:18

**MW13**  
**1710148-10 (Water)**

**Summit Scientific**

**Volatile Organic Compounds by EPA Method 8260B**

Date Sampled: **10/13/17 00:00**

Analyte	Result	Reporting Limit	Units	Dilution	Batch	Prepared	Analyzed	Method	Notes
Benzene	ND	1.0	ug/l	1	1710155	10/17/17	10/17/17	EPA 8260B	
Toluene	ND	1.0	"	"	"	"	"	"	
Ethylbenzene	ND	1.0	"	"	"	"	"	"	
Xylenes (total)	ND	2.0	"	"	"	"	"	"	

Date Sampled: **10/13/17 00:00**

Analyte	Result	Reporting Limit	Units	Dilution	Batch	Prepared	Analyzed	Method	Notes
Surrogate: 1,2-Dichloroethane-d4		117 %	37-154		"	"	"	"	
Surrogate: Toluene-d8		102 %	45-149		"	"	"	"	
Surrogate: 4-Bromofluorobenzene		97.5 %	45-146		"	"	"	"	

Summit Scientific

*The results in this report apply to the samples analyzed in accordance with the chain of custody document. This analytical report must be reproduced in its entirety.*





Fremont Environmental  
1759 Redwing Lane  
Broomfield CO, 80020

Project: Noble - Romero #1  
Project Number: C010-009  
Project Manager: Paul Henehan

**Reported:**  
10/19/17 10:18

**MW14**  
**1710148-11 (Water)**

**Summit Scientific**

**Volatile Organic Compounds by EPA Method 8260B**

Date Sampled: **10/13/17 00:00**

Analyte	Result	Reporting Limit	Units	Dilution	Batch	Prepared	Analyzed	Method	Notes
Benzene	ND	1.0	ug/l	1	1710155	10/17/17	10/17/17	EPA 8260B	
Toluene	ND	1.0	"	"	"	"	"	"	
Ethylbenzene	ND	1.0	"	"	"	"	"	"	
Xylenes (total)	ND	2.0	"	"	"	"	"	"	

Date Sampled: **10/13/17 00:00**

Analyte	Result	Reporting Limit	Units	Dilution	Batch	Prepared	Analyzed	Method	Notes
Surrogate: 1,2-Dichloroethane-d4		114 %	37-154		"	"	"	"	
Surrogate: Toluene-d8		102 %	45-149		"	"	"	"	
Surrogate: 4-Bromofluorobenzene		101 %	45-146		"	"	"	"	

Summit Scientific

*The results in this report apply to the samples analyzed in accordance with the chain of custody document. This analytical report must be reproduced in its entirety.*



Fremont Environmental  
1759 Redwing Lane  
Broomfield CO, 80020

Project: Noble - Romero #1  
Project Number: C010-009  
Project Manager: Paul Henehan

**Reported:**  
10/19/17 10:18

**MW15**  
**1710148-12 (Water)**

**Summit Scientific**

**Volatile Organic Compounds by EPA Method 8260B**

Date Sampled: **10/13/17 00:00**

Analyte	Result	Reporting Limit	Units	Dilution	Batch	Prepared	Analyzed	Method	Notes
Benzene	ND	1.0	ug/l	1	1710155	10/17/17	10/17/17	EPA 8260B	
Toluene	ND	1.0	"	"	"	"	"	"	
Ethylbenzene	ND	1.0	"	"	"	"	"	"	
Xylenes (total)	ND	2.0	"	"	"	"	"	"	

Date Sampled: **10/13/17 00:00**

Analyte	Result	Reporting Limit	Units	Dilution	Batch	Prepared	Analyzed	Method	Notes
Surrogate: 1,2-Dichloroethane-d4		111 %	37-154		"	"	"	"	
Surrogate: Toluene-d8		101 %	45-149		"	"	"	"	
Surrogate: 4-Bromofluorobenzene		101 %	45-146		"	"	"	"	

Summit Scientific

*The results in this report apply to the samples analyzed in accordance with the chain of custody document. This analytical report must be reproduced in its entirety.*



Fremont Environmental  
1759 Redwing Lane  
Broomfield CO, 80020

Project: Noble - Romero #1  
Project Number: C010-009  
Project Manager: Paul Henehan

**Reported:**  
10/19/17 10:18

## Volatile Organic Compounds by EPA Method 8260B - Quality Control

### Summit Scientific

Analyte	Reporting			Spike	Source		%REC		RPD	
	Result	Limit	Units	Level	Result	%REC	Limits	RPD	Limit	Notes

#### Batch 1710155 - EPA 5030 Water MS

##### Blank (1710155-BLK1)

Prepared & Analyzed: 10/16/17

Benzene	ND	1.0	ug/l							
Toluene	ND	1.0	"							
Ethylbenzene	ND	1.0	"							
Xylenes (total)	ND	2.0	"							
Surrogate: 1,2-Dichloroethane-d4	13.5		"	13.3		101	37-154			
Surrogate: Toluene-d8	12.9		"	13.3		96.6	45-149			
Surrogate: 4-Bromofluorobenzene	13.3		"	13.3		99.8	45-146			

##### LCS (1710155-BS1)

Prepared & Analyzed: 10/16/17

Benzene	23.7	1.0	ug/l	33.3		71.0	51-132			
Toluene	27.8	1.0	"	33.3		83.5	51-138			
Ethylbenzene	33.6	1.0	"	33.1		102	58-146			
m,p-Xylene	66.0	2.0	"	66.5		99.2	57-144			
o-Xylene	31.5	1.0	"	32.7		96.5	53-146			
Surrogate: 1,2-Dichloroethane-d4	14.6		"	13.3		109	37-154			
Surrogate: Toluene-d8	13.0		"	13.3		97.6	45-149			
Surrogate: 4-Bromofluorobenzene	13.3		"	13.3		99.6	45-146			

##### Matrix Spike (1710155-MS1)

Source: 1710148-01

Prepared & Analyzed: 10/16/17

Benzene	24.2	1.0	ug/l	33.3	ND	72.6	34-141			
Toluene	28.5	1.0	"	33.3	ND	85.5	27-151			
Ethylbenzene	34.4	1.0	"	33.1	ND	104	29-160			
m,p-Xylene	66.2	2.0	"	66.5	ND	99.5	20-166			
o-Xylene	32.5	1.0	"	32.7	ND	99.5	33-159			
Surrogate: 1,2-Dichloroethane-d4	14.6		"	13.3		110	37-154			
Surrogate: Toluene-d8	13.2		"	13.3		99.0	45-149			
Surrogate: 4-Bromofluorobenzene	13.1		"	13.3		98.0	45-146			

Summit Scientific

The results in this report apply to the samples analyzed in accordance with the chain of custody document. This analytical report must be reproduced in its entirety.



Fremont Environmental  
1759 Redwing Lane  
Broomfield CO, 80020

Project: Noble - Romero #1  
Project Number: C010-009  
Project Manager: Paul Henehan

Reported:  
10/19/17 10:18

**Volatile Organic Compounds by EPA Method 8260B - Quality Control**  
**Summit Scientific**

Analyte	Reporting			Spike	Source		%REC		RPD	
	Result	Limit	Units	Level	Result	%REC	Limits	RPD	Limit	Notes

**Batch 1710155 - EPA 5030 Water MS**

Matrix Spike Dup (1710155-MSD1)	Source: 1710148-01			Prepared & Analyzed: 10/16/17						
Benzene	24.0	1.0	ug/l	33.3	ND	72.1	34-141	0.746	32	
Toluene	29.0	1.0	"	33.3	ND	86.9	27-151	1.57	25	
Ethylbenzene	34.7	1.0	"	33.1	ND	105	29-160	1.07	50	
m,p-Xylene	65.0	2.0	"	66.5	ND	97.7	20-166	1.84	36	
o-Xylene	32.4	1.0	"	32.7	ND	99.1	33-159	0.370	26	
Surrogate: 1,2-Dichloroethane-d4	16.0		"	13.3		120	37-154			
Surrogate: Toluene-d8	13.2		"	13.3		98.6	45-149			
Surrogate: 4-Bromofluorobenzene	13.2		"	13.3		99.0	45-146			

Summit Scientific

The results in this report apply to the samples analyzed in accordance with the chain of custody document. This analytical report must be reproduced in its entirety.



Fremont Environmental  
1759 Redwing Lane  
Broomfield CO, 80020

Project: Noble - Romero #1

Project Number: C010-009  
Project Manager: Paul Henehan

**Reported:**  
10/19/17 10:18

### Notes and Definitions

DET	Analyte DETECTED
ND	Analyte NOT DETECTED at or above the reporting limit
NR	Not Reported
dry	Sample results reported on a dry weight basis
RPD	Relative Percent Difference