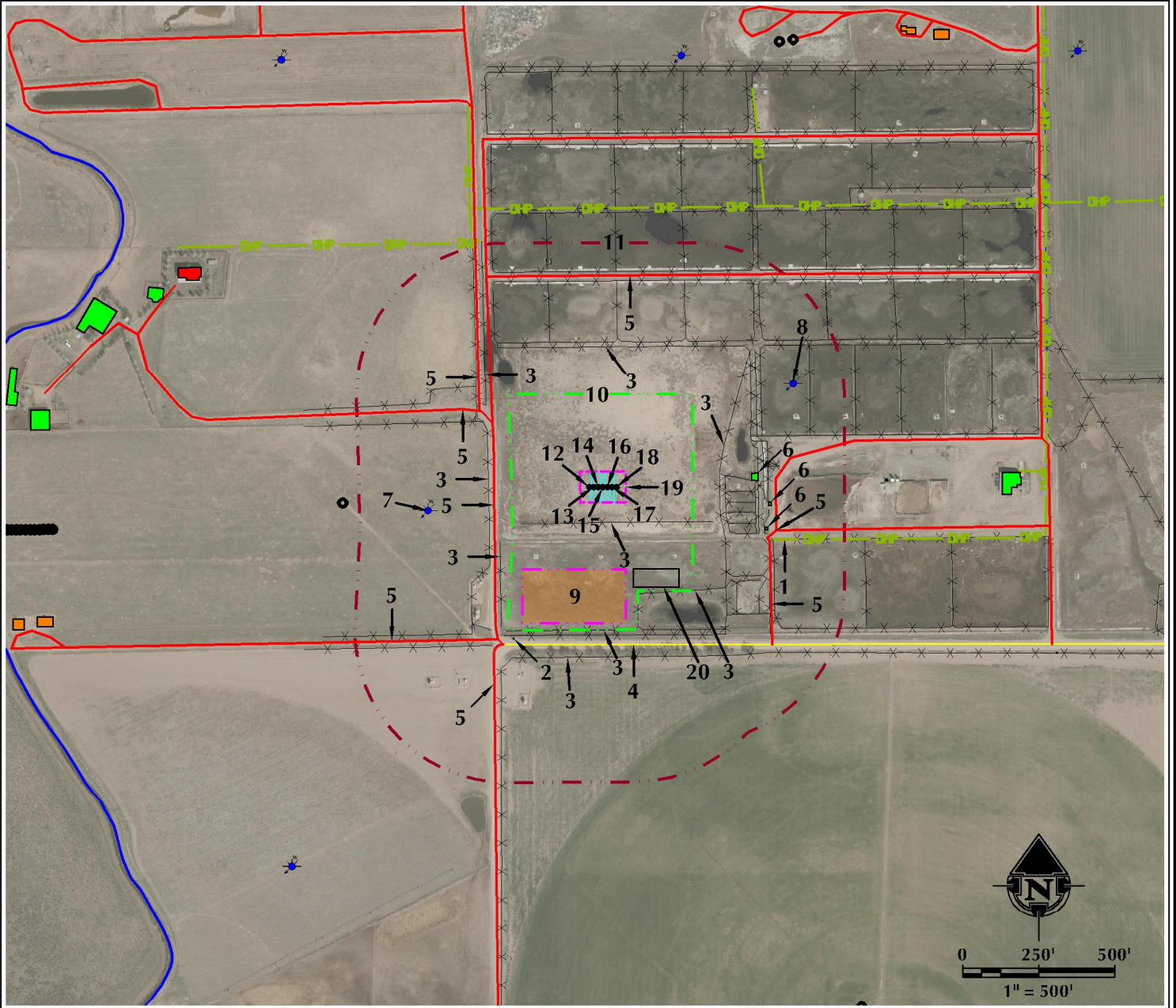


# LOCATION DRAWING ENGLISH FARMS 8-4HZ

## HORIZONTAL MULTI-WELL PAD

SW1/4 SW1/4 SECTION 8, TOWNSHIP 1 NORTH, RANGE 65 WEST, 6TH P.M.



- |   |   |   |
|---|---|---|
| <ol style="list-style-type: none"> <li>1. OVERHEAD POWER LINE IS ±587' E.</li> <li>2. EXISTING ELECTRIC BOX IS ±576' SW.</li> <li>3. EXISTING FENCES ARE ±117' S, ±370' S, ±376' W, ±382' SW, ±384' E, ±462' N, ±469' NW, ±470' S AND ±558' S.</li> <li>4. COUNTY ROAD 10 IS ±500' S.</li> <li>5. EXISTING PRIVATE ROADS ARE ±357' W, ±419' NW, ±478' NW, ±566' E, ±577' E, ±608' SW, ±612' SW AND ±697' N.</li> <li>6. EXISTING BUILDINGS ARE ±490' E, ±548' E AND ±549' E.</li> </ol> | <ol style="list-style-type: none"> <li>7. *EXISTING WATER WELL (PERMIT #141950) IS ±580' W.</li> <li>8. *EXISTING WATER WELL (PERMIT #44159) IS ±713' NE.</li> <li>9. PROPOSED ENGLISH FARMS 8-4HZ FACILITY PAD IS ±270' S.</li> <li>10. OPERATIONAL DISTURBANCE AREA</li> <li>11. 500' BUFFER</li> <li>12. PROPOSED WELL: ENGLISH FARMS 8-1HZ</li> <li>13. PROPOSED WELL: ENGLISH FARMS 8-2HZ</li> <li>14. PROPOSED WELL: ENGLISH FARMS 8-3HZ</li> <li>15. PROPOSED WELL: ENGLISH FARMS 8-4HZ</li> </ol> | <ol style="list-style-type: none"> <li>16. PROPOSED WELL: ENGLISH FARMS 8-5HZ</li> <li>17. PROPOSED WELL: ENGLISH FARMS 8-6HZ</li> <li>18. PROPOSED WELL: ENGLISH FARMS 8-7HZ</li> <li>19. PUMP JACK OPERATIONS AREA</li> <li>20. TEMPORARY EQUIPMENT AREA</li> </ol> |
|---|---|---|

\*SURFACE FEATURE NOT FIELD VERIFIED

LEGEND		
<ul style="list-style-type: none"> <li> EXISTING WELL</li> <li> PROPOSED WELL</li> <li> WATER WELL</li> <li> EXISTING FENCE</li> <li> PUBLIC ROAD</li> <li> PRIVATE ROAD</li> </ul>	<ul style="list-style-type: none"> <li> 500' BUFFER</li> <li> DISTURBANCE AREA</li> <li> PUMP JACK AREA</li> <li> PROPOSED FACILITY</li> <li> DITCH/CANAL/DRAINAGE</li> </ul>	<ul style="list-style-type: none"> <li> OVERHEAD POWER LINE</li> <li> EXISTING FACILITY</li> <li> EXISTING BUILDINGS</li> <li> RESIDENCE/BUILDING UNIT</li> <li> TEMPORARY EQUIPMENT AREA</li> </ul>

**\* REFERENCE LOCATION \***

ALL MEASUREMENTS ARE MADE FROM  
REFERENCE WELL: ENGLISH FARMS 8-4HZ  
LAT: 40.060184 LONG: -104.695728° (NAD83)  
EXISTING GROUND ELEVATION = 4990.7'  
WELL FOOTAGES: 518' FSL & 376' FWL

SURFACE USE: FEED LOT

**609 CONSULTING, LLC**

LOVELAND OFFICE  
1635 Fossil Drive, Suite 204  
Loveland, Colorado 80538  
Phone: 970-776-4311

SHERIDAN OFFICE  
1095 Saberton Avenue  
Sheridan, Wyoming 82801  
Phone: 307-674-0609

DATE SURVEYED: 9/14/17  
DATE: 11/16/17  
DRAFTER: CDJ  
REVISED:

**DATA SOURCES:**  
- AERIAL COURTESY OF ESRI, INC.  
- WATER WELLS COURTESY OF COLORADO DIVISION OF WATER RESOURCES

NEAREST BUILDING UNIT: ±1491' NW

PREPARED FOR:  
**Kerr-McGee Oil & Gas Onshore LP.**