



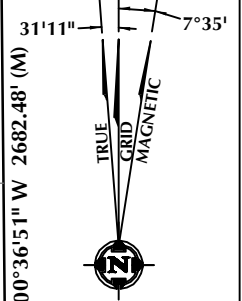
# T1N, R65W

N. 1/4 COR.  
SEC. 20, T1N, R65W  
FOUND 2" ALUM. CAP  
L.S. NO. 25937

MATCH LINE  
SEE SHEET 1

NE. COR.  
SEC. 20, T1N, R65W  
FOUND 2 1/2" ALUM. CAP  
L.S. NO. 19585

SURFACE LOCATION: NAD 83  
GROUND ELEVATION= 4990.7'  
LATITUDE= 40.060184°  
LONGITUDE= -104.695728°  
LATITUDE= 40°03'36.663"  
LONGITUDE= -104°41'44.622"  
HEEL LOCATION: NAD 83  
LATITUDE= 40.058623°  
LONGITUDE= -104.694128°  
LATITUDE= 40°03'31.041"  
LONGITUDE= -104°41'38.861"  
BOTTOM HOLE LOCATION: NAD 83  
LATITUDE= 40.023655°  
LONGITUDE= -104.694434°  
LATITUDE= 40°01'25.158"  
LONGITUDE= -104°41'39.962"



## 20

CENTER 1/4 COR.  
SEC. 20, T1N, R65W  
FOUND 2" ALUM. CAP  
L.S. NO. 25937

CS. 1/16 COR.  
SEC. 20, T1N, R65W  
FOUND 2" ALUM. CAP  
P.L.S. NO. 23519

S. 1/4 COR.  
SEC. 20, T1N, R65W  
FOUND 2 1/2" ALUM. CAP  
L.S. NO. 30462

E. 1/4 COR.  
SEC. 20, T1N, R65W  
FOUND 2" ALUM. CAP  
L.S. NO. 25937

SE. COR.  
SEC. 20, T1N, R65W  
FOUND 2" ALUM. CAP  
ILLEGIBLE

MATCH LINE  
SEE SHEET 3

NW. COR.  
SEC. 20, T1N, R65W  
FOUND 2" ALUM. CAP  
L.S. NO. 25937

N. 1/16 COR.  
SEC. 19 & SEC. 20  
T1N, R65W  
FOUND 2 1/2" ALUM. CAP  
ILLEGIBLE

W. 1/4 COR.  
SEC. 20, T1N, R65W  
FOUND 2" ALUM. CAP  
L.S. NO. 25937

SW. COR.  
SEC. 20, T1N, R65W  
FOUND 2" ALUM. CAP  
ILLEGIBLE

S 89°01'25" W 2604.36' (M)

S 89°01'45" W 2603.49' (M)

N 00°03'27" W  
1325.56' (M)

N 00°20'04" W  
2666.89' (M)

N 00°36'51" W 2682.48' (M)

N 00°04'07" W  
1325.44' (M)

S 00°08'07" E 12738' GRID  
S 00°23'04" W TRUE  
S 07°43'07" E MAGNETIC

S 89°22'30" W  
2616.78' (M)

S 89°22'23" W  
2616.46' (M)

N 00°36'12" W 2676.57' (M)

N 00°03'34" W 2650.83' (M)

N 00°20'43" W  
1331.77' (M)

N 00°20'21" W  
1331.67' (M)

S 89°39'07" W 2629.84' (M)

S 89°39'36" W 2628.63' (M)

WELLBORE CONTINUES  
INTO SECTION 29

### CERTIFICATE OF SURVEYOR:

THIS IS TO CERTIFY THAT THE ABOVE PLAT WAS PREPARED FROM FIELD NOTES OF ACTUAL SURVEYS MADE BY ME OR UNDER MY SUPERVISION AND THAT THE SAME ARE TRUE AND CORRECT TO THE BEST OF MY KNOWLEDGE AND BELIEF. THIS CERTIFICATE DOES NOT REPRESENT A LAND SURVEY PLAT OR IMPROVEMENT SURVEY PLAT AS DEFINED BY C.R.S. 38-5-102 AND CANNOT BE RELIED UPON TO DETERMINE OWNERSHIP.

*Randall K. French*  
38512  
PROFESSIONAL LAND SURVEYOR  
11/16/17  
RANDALL K. FRENCH  
PROFESSIONAL LAND SURVEYOR  
COLORADO REGISTRATION NUMBER 38512

NOTICE:  
ACCORDING TO COLORADO STATE LAW YOU MUST TAKE LEGAL ACTION BASED UPON ANY DEFECT IN THIS SURVEY WITHIN THREE YEARS AFTER YOU FIRST DISCOVER SUCH DEFECT. IN NO EVENT MAY ANY ACTION BASED UPON ANY DEFECT IN THIS SURVEY BE COMMENCED MORE THAN TEN YEARS FROM THE DATE ON THE CERTIFICATION SHOWN HEREON.

NOTE:  
MAGNETIC NORTH IS CURRENT AS OF 10/27/2017.  
MAGNETIC NORTH CHANGES WEST 0°06' PER YEAR.



SCALE: 1" = 1000'

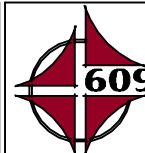
### NOTES:

- ▲ INDICATES SECTION CORNER.
- INDICATES CALCULATED CORNER.
- ELEVATION BASED ON NAVD88 (GEOID 12B).
- BASIS OF BEARING DERIVED FROM COLORADO COORDINATE SYSTEM OF 1983 NORTH ZONE.
- ALL MEASURED DISTANCES ARE GRID.
- COMBINED SCALE FACTOR: .99972920 CALCULATED FROM THE S. 1/4 CORNER OF SECTION 8, T1N, R65W.
- OPERATOR: JASON CURNUTT / PDOP = 1.2.
- SEE ADDENDUM TO WELL LOCATION CERTIFICATE FOR EXISTING IMPROVEMENTS WITHIN 500' OF THE WELL PAD.
- WELL FOOTAGES ARE MEASURED AT RIGHT ANGLES TO THE SECTION LINES.
- THE BOTTOM OF HOLE BEARS S00°08'07"E, 12738' FROM THE HEEL LOCATION.

### WELL PAD - ENGLISH FARMS 8-4HZ

ENGLISH FARMS 8-4HZ  
WELL LOCATION CERTIFICATE  
518' FSL & 376' FWL SWSW (SURFACE)  
LOCATED IN SECTION 8  
50' FNL & 816' FWL NWNW (HEEL)  
LOCATED IN SECTION 17  
2182' FNL & 812' FWL SWNW (BOTTOM)  
LOCATED IN SECTION 29  
T1N, R65W, 6TH P.M.  
WELD COUNTY, COLORADO

**Kerr-McGee Oil &  
Gas Onshore L.P.**  
1099 18th Street  
Denver, Colorado 80202



### CONSULTING, LLC

SHERIDAN OFFICE  
1095 Saberton Avenue  
Sheridan, Wyoming 82801  
Phone 307-674-0609

LOVELAND OFFICE  
1635 Foxtrail Drive, Suite 204  
Loveland, Colorado 80538  
Phone 970-776-4331

DRAFTED BY: LMO	CHECKED BY: RKF	SHEET NO: <b>2</b> 2 OF 3
DATE DRAFTED: 11/16/17	DATE SURVEYED: 9/14/17	
REVISED:	FILE NAME: 17-119	

# T1N, R65W

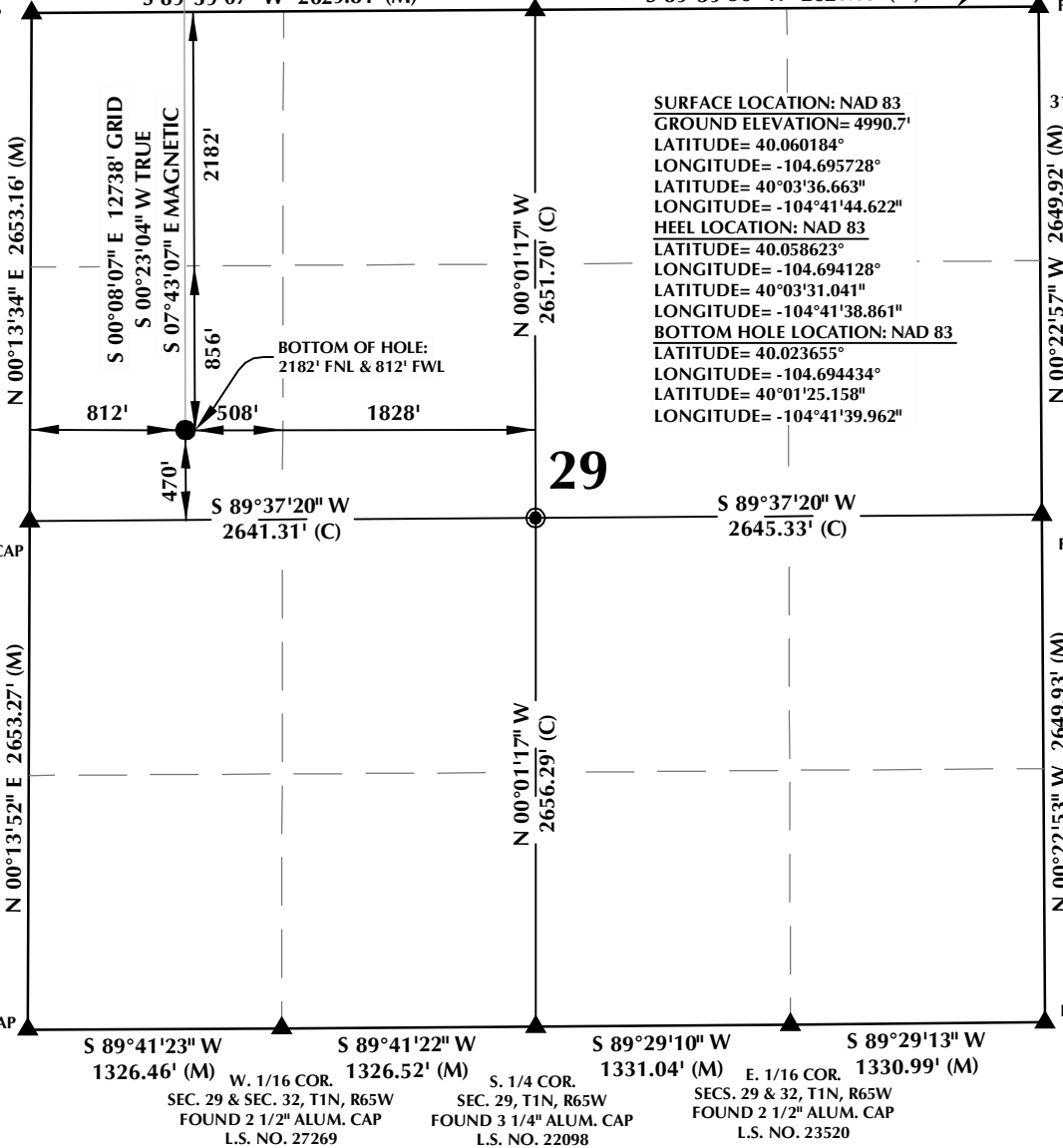
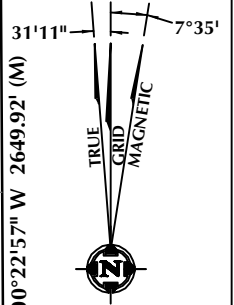
N. 1/4 COR.  
SEC. 29, T1N, R65W  
FOUND 2 1/2" ALUM. CAP  
L.S. NO. 30462

MATCH LINE  
SEE SHEET 2

NE. COR.  
SEC. 29, T1N, R65W  
FOUND 2" ALUM. CAP  
ILLEGIBLE

NW. COR.  
SEC. 29, T1N, R65W  
FOUND 2" ALUM. CAP  
ILLEGIBLE

SURFACE LOCATION: NAD 83  
GROUND ELEVATION= 4990.7'  
LATITUDE= 40.060184°  
LONGITUDE= -104.695728°  
LATITUDE= 40°03'36.663"  
LONGITUDE= -104°41'44.622"  
HEEL LOCATION: NAD 83  
LATITUDE= 40.058623°  
LONGITUDE= -104.694128°  
LATITUDE= 40°03'31.041"  
LONGITUDE= -104°41'38.861"  
BOTTOM HOLE LOCATION: NAD 83  
LATITUDE= 40.023655°  
LONGITUDE= -104.694434°  
LATITUDE= 40°01'25.158"  
LONGITUDE= -104°41'39.962"



29

## CERTIFICATE OF SURVEYOR:

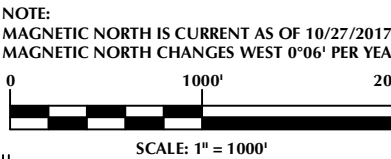
THIS IS TO CERTIFY THAT THE ABOVE PLAT WAS PREPARED FROM FIELD NOTES OF ACTUAL SURVEYS MADE BY ME OR UNDER MY SUPERVISION AND THAT THE SAME ARE TRUE AND CORRECT TO THE BEST OF MY KNOWLEDGE AND BELIEF. THIS CERTIFICATE DOES NOT REPRESENT A LAND SURVEY PLAT OR IMPROVEMENT SURVEY PLAT AS DEFINED BY C.R.S. 38-5-102 AND CANNOT BE RELIED UPON TO DETERMINE OWNERSHIP.

*Randall K. French*  
38512  
PROFESSIONAL LAND SURVEYOR  
11/16/17

NOTICE: ACCORDING TO COLORADO STATE LAW YOU MUST TAKE LEGAL ACTION BASED UPON ANY DEFECT IN THIS SURVEY WITHIN THREE YEARS AFTER YOU FIRST DISCOVER SUCH DEFECT. IN NO EVENT MAY ANY ACTION BASED UPON ANY DEFECT IN THIS SURVEY BE COMMENCED MORE THAN TEN YEARS FROM THE DATE ON THE CERTIFICATION SHOWN HEREON.

## NOTES:

- ▲ INDICATES SECTION CORNER.
- INDICATES CALCULATED CORNER.
- ELEVATION BASED ON NAVD88 (GEOID 12B).
- BASIS OF BEARING DERIVED FROM COLORADO COORDINATE SYSTEM OF 1983 NORTH ZONE.
- ALL MEASURED DISTANCES ARE GRID.
- COMBINED SCALE FACTOR: .99972920 CALCULATED FROM THE S. 1/4 CORNER OF SECTION 8, T1N, R65W.
- OPERATOR: JASON CURNUTT / PDOP = 1.2.
- SEE ADDENDUM TO WELL LOCATION CERTIFICATE FOR EXISTING IMPROVEMENTS WITHIN 500' OF THE WELL PAD.
- WELL FOOTAGES ARE MEASURED AT RIGHT ANGLES TO THE SECTION LINES.
- THE BOTTOM OF HOLE BEARS S00°08'07"E, 12738' FROM THE HEEL LOCATION.



## WELL PAD - ENGLISH FARMS 8-4HZ

ENGLISH FARMS 8-4HZ  
WELL LOCATION CERTIFICATE  
518' FSL & 376' FWL SWSW (SURFACE)  
LOCATED IN SECTION 8  
50' FNL & 816' FWL NWNW (HEEL)  
LOCATED IN SECTION 17  
2182' FNL & 812' FWL SWNW (BOTTOM)  
LOCATED IN SECTION 29  
T1N, R65W, 6TH P.M.  
WELD COUNTY, COLORADO

**Kerr-McGee Oil & Gas Onshore L.P.**  
1099 18th Street  
Denver, Colorado 80202

**609 CONSULTING, LLC**

SHERIDAN OFFICE: 1095 Saberton Avenue, Sheridan, Wyoming 82801, Phone 307-674-0609  
LOVELAND OFFICE: 1635 Foxtrail Drive, Suite 204, Loveland, Colorado 80538, Phone 970-776-4331

DRAFTED BY: LMO	CHECKED BY: RKF	SHEET NO: <b>3</b> 3 OF 3
DATE DRAFTED: 11/16/17	DATE SURVEYED: 9/14/17	
REVISED:	FILE NAME: 17-119	