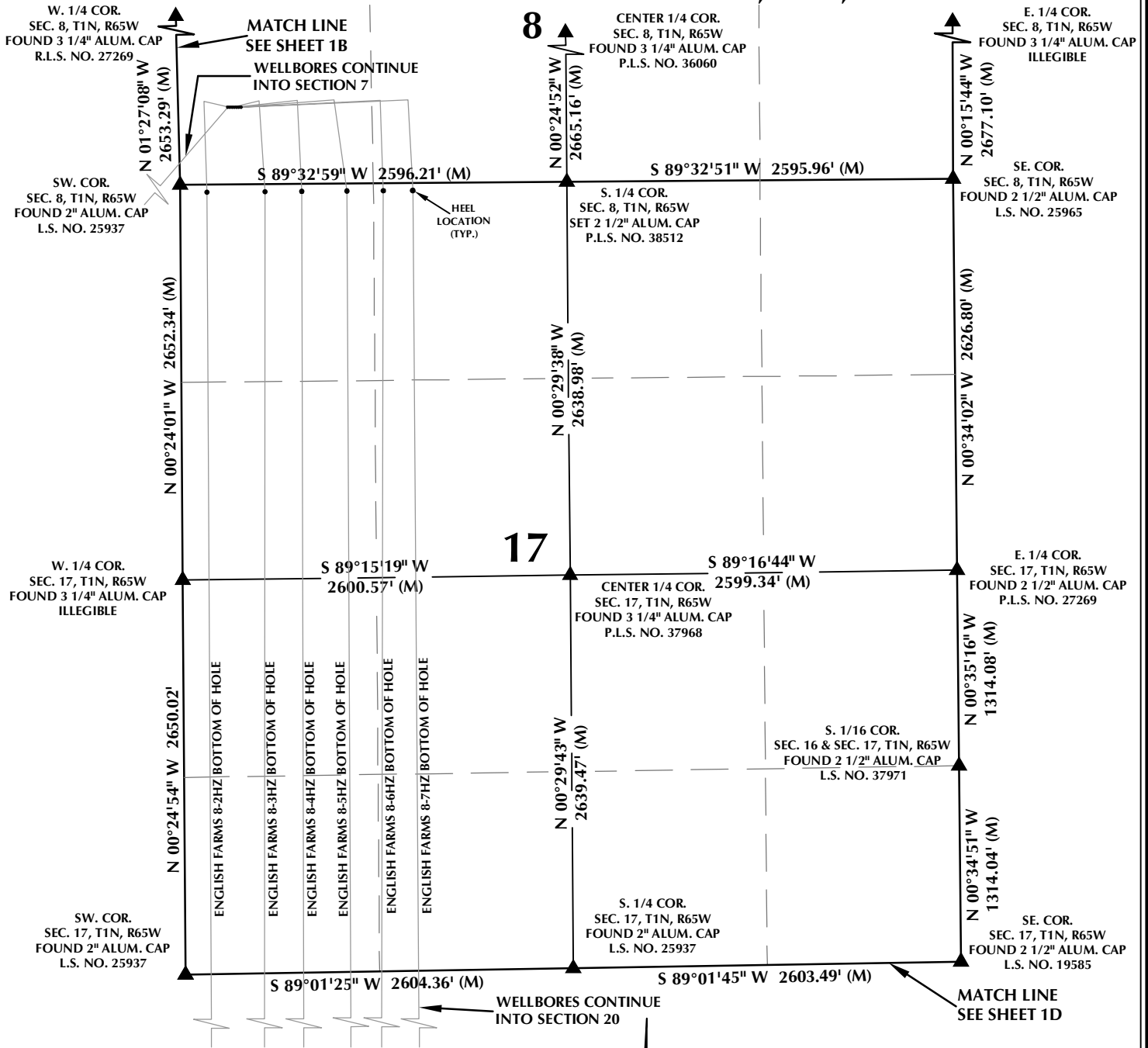


MULTI-WELL PLAN SECTIONS 8 & 17, T1N, R65W



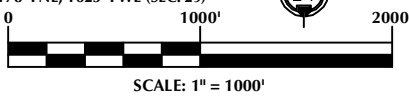
WELL NOTES:

- ENGLISH FARMS 8-1HZ
SURFACE: 519' FSL, 331' FWL (SEC. 8)
BOTTOM HOLE: 459' FSL, 601' FWL (SEC. 6)
- ENGLISH FARMS 8-2HZ
SURFACE: 519' FSL, 346' FWL (SEC. 8)
BOTTOM HOLE: 2180' FNL, 211' FWL (SEC. 29)
- ENGLISH FARMS 8-3HZ
SURFACE: 518' FSL, 361' FWL (SEC. 8)
BOTTOM HOLE: 2180' FNL, 528' FWL (SEC. 29)
- ENGLISH FARMS 8-4HZ
SURFACE: 518' FSL, 376' FWL (SEC. 8)
BOTTOM HOLE: 2182' FNL, 812' FWL (SEC. 29)

- ENGLISH FARMS 8-5HZ
SURFACE: 518' FSL, 391' FWL (SEC. 8)
BOTTOM HOLE: 2181' FNL, 1149' FWL (SEC. 29)
- ENGLISH FARMS 8-6HZ
SURFACE: 518' FSL, 406' FWL (SEC. 8)
BOTTOM HOLE: 2178' FNL, 1305' FWL (SEC. 29)
- ENGLISH FARMS 8-7HZ
SURFACE: 518' FSL, 421' FWL (SEC. 8)
BOTTOM HOLE: 2178' FNL, 1625' FWL (SEC. 29)

NOTES:

- ▲ INDICATES SECTION CORNER.
- INDICATES CALCULATED CORNER.
- BASIS OF BEARING DERIVED FROM COLORADO COORDINATE SYSTEM OF 1983 NORTH ZONE.
- ALL MEASURED DISTANCES ARE GRID.
- COMBINED SCALE FACTOR: .99972920 CALCULATED FROM THE S. 1/4 CORNER OF SECTION 8, T1N, R65W.
- WELL FOOTAGES ARE MEASURED AT RIGHT ANGLES TO THE SECTION LINES.



WELL PAD - ENGLISH FARMS 8-4HZ

MULTI-WELL PLAN
ENGLISH FARMS 8-1HZ,
ENGLISH FARMS 8-2HZ, ENGLISH FARMS 8-3HZ,
ENGLISH FARMS 8-4HZ, ENGLISH FARMS 8-5HZ,
ENGLISH FARMS 8-6HZ & ENGLISH FARMS 8-7HZ
LOCATED IN SECTIONS 6, 7, 8, 17, 20 & 29
T1N, R65W, 6TH P.M.
WELD COUNTY, COLORADO

**Kerr-McGee Oil &
Gas Onshore L.P.**
1099 18th Street
Denver, Colorado 80202



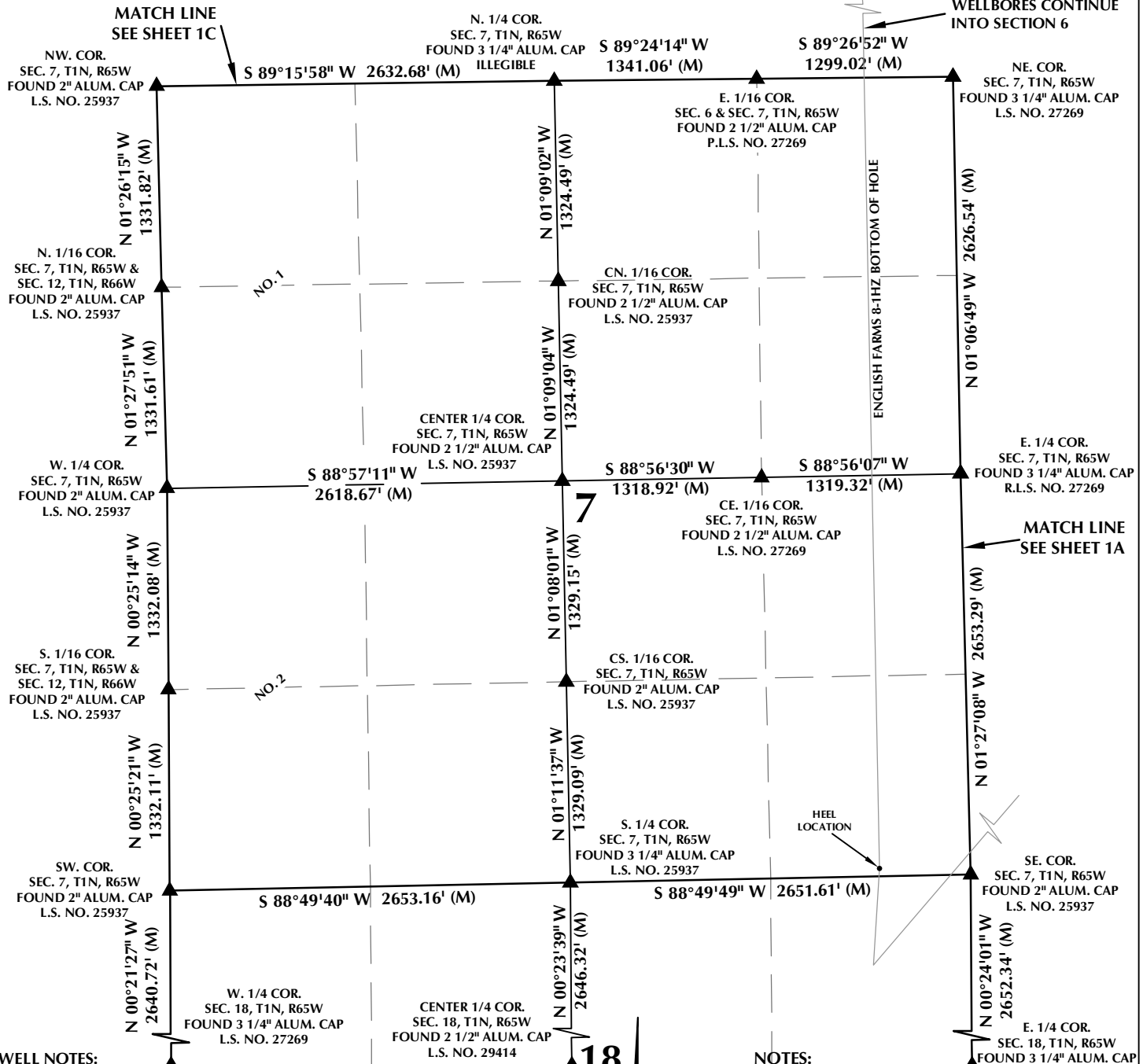
CONSULTING, LLC

SHERIDAN OFFICE
1095 Saberton Avenue
Sheridan, Wyoming 82801
Phone 307-674-0609

LOVELAND OFFICE
1635 Foxtrail Drive, Suite 204
Loveland, Colorado 80538
Phone 970-776-4331

DRAFTED BY: LMO	CHECKED BY: RKF	SHEET NO: 1A 1A OF 1
DATE DRAFTED: 11/16/17	DATE SURVEYED: 9/14/17	
REVISED:	FILE NAME: 17-119	

MULTI-WELL PLAN SECTIONS 7 & 18, T1N, R65W



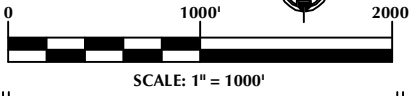
WELL NOTES:

- ENGLISH FARMS 8-1HZ
SURFACE: 519' FSL, 331' FWL (SEC. 8)
BOTTOM HOLE: 459' FSL, 601' FEL (SEC. 6)
- ENGLISH FARMS 8-2HZ
SURFACE: 519' FSL, 346' FWL (SEC. 8)
BOTTOM HOLE: 2180' FNL, 211' FWL (SEC. 29)
- ENGLISH FARMS 8-3HZ
SURFACE: 518' FSL, 361' FWL (SEC. 8)
BOTTOM HOLE: 2180' FNL, 528' FWL (SEC. 29)
- ENGLISH FARMS 8-4HZ
SURFACE: 518' FSL, 376' FWL (SEC. 8)
BOTTOM HOLE: 2182' FNL, 812' FWL (SEC. 29)

- ENGLISH FARMS 8-5HZ
SURFACE: 518' FSL, 391' FWL (SEC. 8)
BOTTOM HOLE: 2181' FNL, 1149' FWL (SEC. 29)
- ENGLISH FARMS 8-6HZ
SURFACE: 518' FSL, 406' FWL (SEC. 8)
BOTTOM HOLE: 2178' FNL, 1305' FWL (SEC. 29)
- ENGLISH FARMS 8-7HZ
SURFACE: 518' FSL, 421' FWL (SEC. 8)
BOTTOM HOLE: 2178' FNL, 1625' FWL (SEC. 29)

NOTES:

1. ▲ INDICATES SECTION CORNER.
2. ● INDICATES CALCULATED CORNER.
3. BASIS OF BEARING DERIVED FROM COLORADO COORDINATE SYSTEM OF 1983 NORTH ZONE.
4. ALL MEASURED DISTANCES ARE GRID.
5. COMBINED SCALE FACTOR: .99972920 CALCULATED FROM THE S. 1/4 CORNER OF SECTION 8, T1N, R65W.
6. WELL FOOTAGES ARE MEASURED AT RIGHT ANGLES TO THE SECTION LINES.
7. NO. 1 & NO. 2 AS SHOWN HEREON ARE GOVERNMENT LOTS 1 & 2 PER THE ORIGINAL GLO SURVEY.



WELL PAD - ENGLISH FARMS 8-4HZ

MULTI-WELL PLAN
ENGLISH FARMS 8-1HZ,
ENGLISH FARMS 8-2HZ, ENGLISH FARMS 8-3HZ,
ENGLISH FARMS 8-4HZ, ENGLISH FARMS 8-5HZ,
ENGLISH FARMS 8-6HZ & ENGLISH FARMS 8-7HZ
LOCATED IN SECTIONS 6, 7, 8, 17, 20 & 29
T1N, R65W, 6TH P.M.
WELD COUNTY, COLORADO

**Kerr-McGee Oil &
Gas Onshore L.P.**
1099 18th Street
Denver, Colorado 80202



CONSULTING, LLC

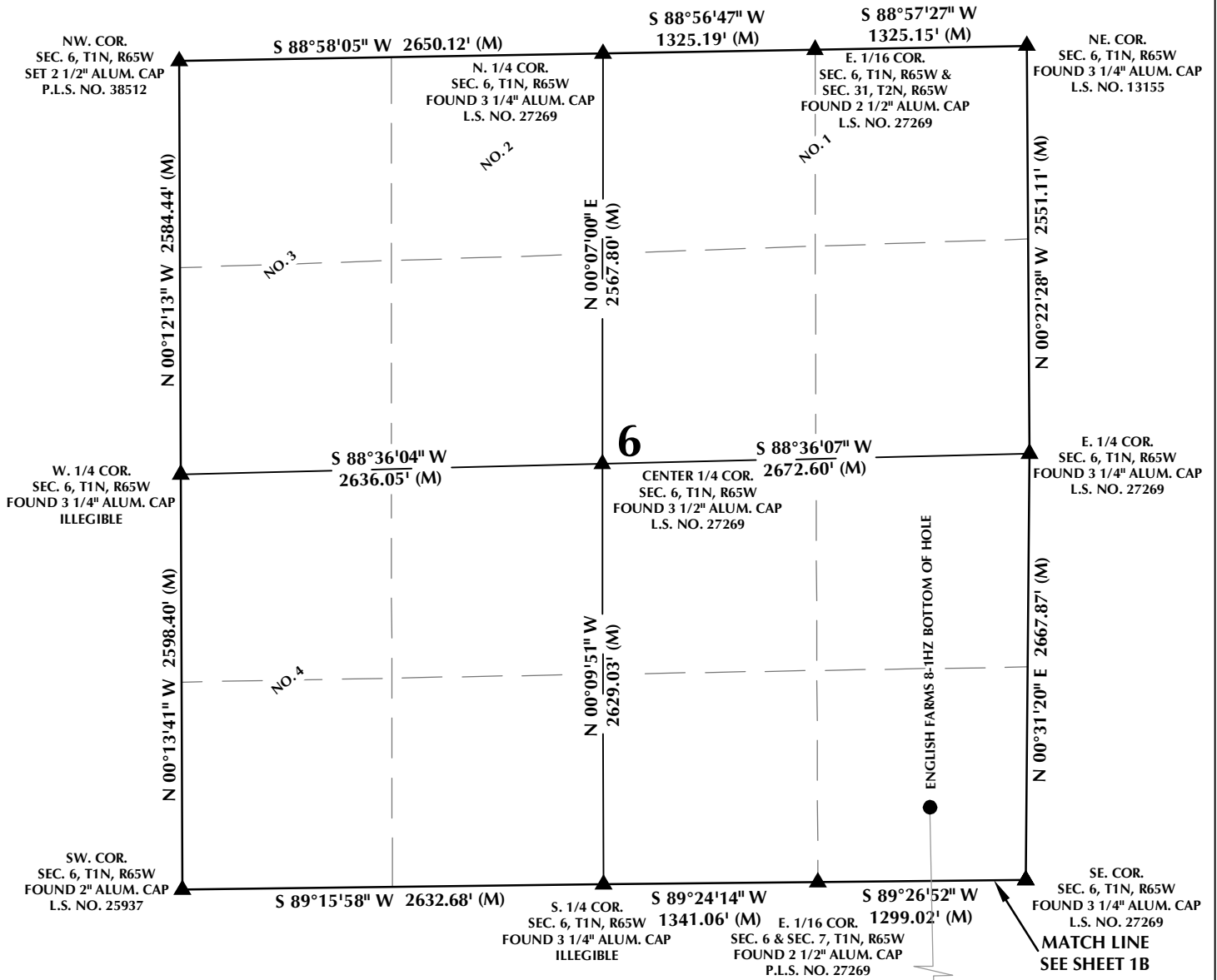
SHERIDAN OFFICE
1095 Saberton Avenue
Sheridan, Wyoming 82801
Phone 307-674-0609

LOVELAND OFFICE
1635 Foxtrail Drive, Suite 204
Loveland, Colorado 80538
Phone 970-776-4331

DRAFTED BY:	LMO	CHECKED BY:	RKF	SHEET NO: 1B 1B OF 1
DATE DRAFTED:	11/16/17	DATE SURVEYED:	9/14/17	
REVISED:		FILE NAME:	17-119	

K:\AMADARCO\2017\119_ENGLISH_FARMS_T1N_R65W_SEC_8\PLATS\8-4HZ\ENGLISH FARMS 8-4HZ MW.dwg, 11/16/2017 1:52:42 PM, hogan

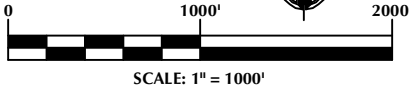
MULTI-WELL PLAN SECTION 6, T1N, R65W



WELL NOTES:

- ENGLISH FARMS 8-1HZ
SURFACE: 519' FSL, 331' FWL (SEC. 8)
BOTTOM HOLE: 459' FSL, 601' FWL (SEC. 6)
- ENGLISH FARMS 8-2HZ
SURFACE: 519' FSL, 346' FWL (SEC. 8)
BOTTOM HOLE: 2180' FNL, 211' FWL (SEC. 29)
- ENGLISH FARMS 8-3HZ
SURFACE: 518' FSL, 361' FWL (SEC. 8)
BOTTOM HOLE: 2180' FNL, 528' FWL (SEC. 29)
- ENGLISH FARMS 8-4HZ
SURFACE: 518' FSL, 376' FWL (SEC. 8)
BOTTOM HOLE: 2182' FNL, 812' FWL (SEC. 29)

- ENGLISH FARMS 8-5HZ
SURFACE: 518' FSL, 391' FWL (SEC. 8)
BOTTOM HOLE: 2181' FNL, 1149' FWL (SEC. 29)
- ENGLISH FARMS 8-6HZ
SURFACE: 518' FSL, 406' FWL (SEC. 8)
BOTTOM HOLE: 2178' FNL, 1305' FWL (SEC. 29)
- ENGLISH FARMS 8-7HZ
SURFACE: 518' FSL, 421' FWL (SEC. 8)
BOTTOM HOLE: 2178' FNL, 1625' FWL (SEC. 29)



NOTES:

- ▲ INDICATES SECTION CORNER.
- INDICATES CALCULATED CORNER.
- BASIS OF BEARING DERIVED FROM COLORADO COORDINATE SYSTEM OF 1983 NORTH ZONE.
- ALL MEASURED DISTANCES ARE GRID.
- COMBINED SCALE FACTOR: .99972920 CALCULATED FROM THE S. 1/4 CORNER OF SECTION 8, T1N, R65W.
- WELL FOOTAGES ARE MEASURED AT RIGHT ANGLES TO THE SECTION LINES.
- NO. 1, NO. 2, NO. 3 & NO. 4 AS SHOWN HEREON ARE GOVERNMENT LOTS 1, 2, 3 & 4 PER THE ORIGINAL GLO SURVEY.

WELL PAD - ENGLISH FARMS 8-4HZ

MULTI-WELL PLAN
ENGLISH FARMS 8-1HZ,
ENGLISH FARMS 8-2HZ, ENGLISH FARMS 8-3HZ,
ENGLISH FARMS 8-4HZ, ENGLISH FARMS 8-5HZ,
ENGLISH FARMS 8-6HZ & ENGLISH FARMS 8-7HZ
LOCATED IN SECTIONS 6, 7, 8, 17, 20 & 29
T1N, R65W, 6TH P.M.
WELD COUNTY, COLORADO

**Kerr-McGee Oil &
Gas Onshore L.P.**
1099 18th Street
Denver, Colorado 80202



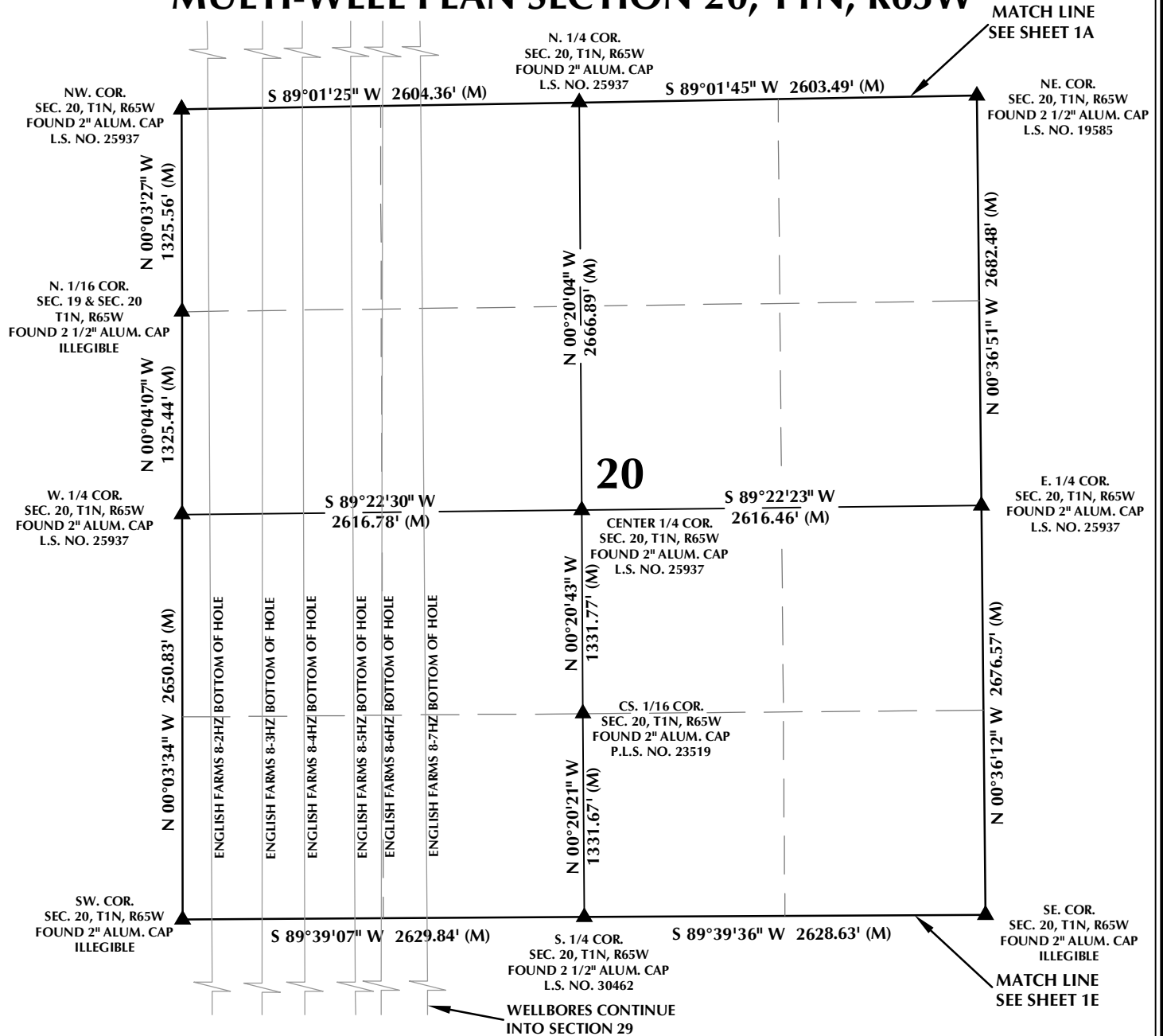
CONSULTING, LLC

SHERIDAN OFFICE
1095 Saberton Avenue
Sheridan, Wyoming 82801
Phone 307-674-0609

LOVELAND OFFICE
1635 Foxtrail Drive, Suite 204
Loveland, Colorado 80538
Phone 970-776-4331

DRAFTED BY: LMO	CHECKED BY: RKF	SHEET NO: 1C 1C OF 1
DATE DRAFTED: 11/16/17	DATE SURVEYED: 9/14/17	
REVISED:	FILE NAME: 17-119	

MULTI-WELL PLAN SECTION 20, T1N, R65W



WELL NOTES:

ENGLISH FARMS 8-1HZ
SURFACE: 519' FSL, 331' FWL (SEC. 8)
BOTTOM HOLE: 459' FSL, 601' FWL (SEC. 6)

ENGLISH FARMS 8-2HZ
SURFACE: 519' FSL, 346' FWL (SEC. 8)
BOTTOM HOLE: 2180' FNL, 211' FWL (SEC. 29)

ENGLISH FARMS 8-3HZ
SURFACE: 518' FSL, 361' FWL (SEC. 8)
BOTTOM HOLE: 2180' FNL, 528' FWL (SEC. 29)

ENGLISH FARMS 8-4HZ
SURFACE: 518' FSL, 376' FWL (SEC. 8)
BOTTOM HOLE: 2182' FNL, 812' FWL (SEC. 29)

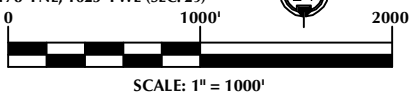
ENGLISH FARMS 8-5HZ
SURFACE: 518' FSL, 391' FWL (SEC. 8)
BOTTOM HOLE: 2181' FNL, 1149' FWL (SEC. 29)

ENGLISH FARMS 8-6HZ
SURFACE: 518' FSL, 406' FWL (SEC. 8)
BOTTOM HOLE: 2178' FNL, 1305' FWL (SEC. 29)

ENGLISH FARMS 8-7HZ
SURFACE: 518' FSL, 421' FWL (SEC. 8)
BOTTOM HOLE: 2178' FNL, 1625' FWL (SEC. 29)

NOTES:

- ▲ INDICATES SECTION CORNER.
- INDICATES CALCULATED CORNER.
- BASIS OF BEARING DERIVED FROM COLORADO COORDINATE SYSTEM OF 1983 NORTH ZONE.
- ALL MEASURED DISTANCES ARE GRID. COMBINED SCALE FACTOR: .99972920 CALCULATED FROM THE S. 1/4 CORNER OF SECTION 8, T1N, R65W.
- WELL FOOTAGES ARE MEASURED AT RIGHT ANGLES TO THE SECTION LINES.



WELL PAD - ENGLISH FARMS 8-4HZ

MULTI-WELL PLAN
ENGLISH FARMS 8-1HZ,
ENGLISH FARMS 8-2HZ, ENGLISH FARMS 8-3HZ,
ENGLISH FARMS 8-4HZ, ENGLISH FARMS 8-5HZ,
ENGLISH FARMS 8-6HZ & ENGLISH FARMS 8-7HZ
LOCATED IN SECTIONS 6, 7, 8, 17, 20 & 29
T1N, R65W, 6TH P.M.
WELD COUNTY, COLORADO

**Kerr-McGee Oil &
Gas Onshore L.P.**
1099 18th Street
Denver, Colorado 80202

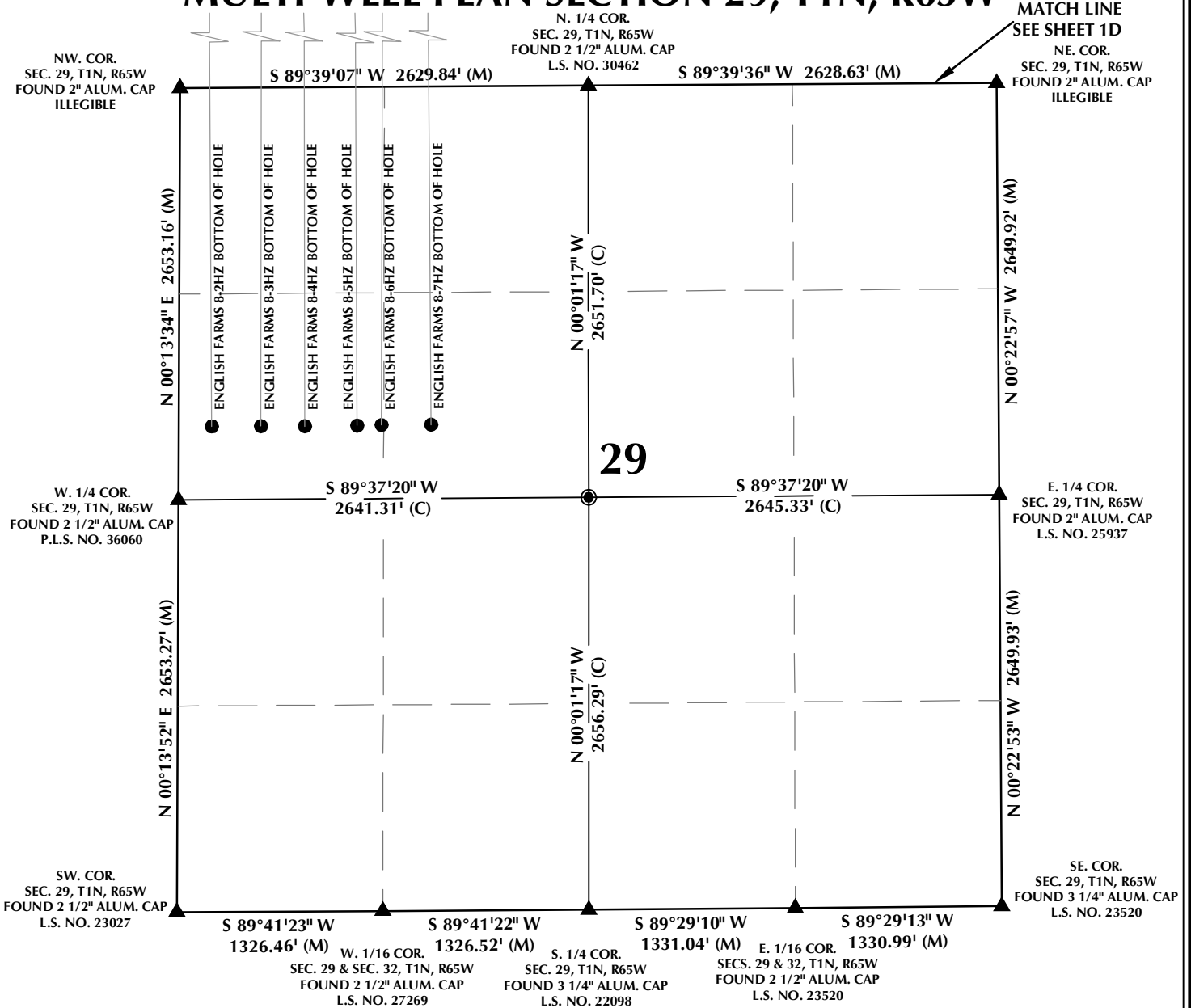


CONSULTING, LLC

SHERIDAN OFFICE 1095 Saberton Avenue Sheridan, Wyoming 82801 Phone 307-674-0609
LOVELAND OFFICE 1635 Foxtrail Drive, Suite 204 Loveland, Colorado 80538 Phone 970-776-4331

DRAFTED BY: LMO	CHECKED BY: RKF	SHEET NO: 1D 1D OF 1
DATE DRAFTED: 11/16/17	DATE SURVEYED: 9/14/17	
REVISED:	FILE NAME: 17-119	

MULTI-WELL PLAN SECTION 29, T1N, R65W



WELL NOTES:

ENGLISH FARMS 8-1HZ
 SURFACE: 519' FSL, 331' FWL (SEC. 8)
 BOTTOM HOLE: 459' FSL, 601' FEL (SEC. 6)

ENGLISH FARMS 8-2HZ
 SURFACE: 519' FSL, 346' FWL (SEC. 8)
 BOTTOM HOLE: 2180' FNL, 211' FWL (SEC. 29)

ENGLISH FARMS 8-3HZ
 SURFACE: 518' FSL, 361' FWL (SEC. 8)
 BOTTOM HOLE: 2180' FNL, 528' FWL (SEC. 29)

ENGLISH FARMS 8-4HZ
 SURFACE: 518' FSL, 376' FWL (SEC. 8)
 BOTTOM HOLE: 2182' FNL, 812' FWL (SEC. 29)

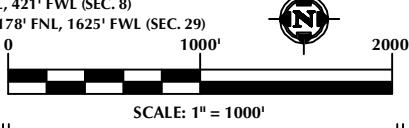
ENGLISH FARMS 8-5HZ
 SURFACE: 518' FSL, 391' FWL (SEC. 8)
 BOTTOM HOLE: 2181' FNL, 1149' FWL (SEC. 29)

ENGLISH FARMS 8-6HZ
 SURFACE: 518' FSL, 406' FWL (SEC. 8)
 BOTTOM HOLE: 2178' FNL, 1305' FWL (SEC. 29)

ENGLISH FARMS 8-7HZ
 SURFACE: 518' FSL, 421' FWL (SEC. 8)
 BOTTOM HOLE: 2178' FNL, 1625' FWL (SEC. 29)

NOTES:

- ▲ INDICATES SECTION CORNER.
- INDICATES CALCULATED CORNER.
- BASIS OF BEARING DERIVED FROM COLORADO COORDINATE SYSTEM OF 1983 NORTH ZONE.
- ALL MEASURED DISTANCES ARE GRID.
- COMBINED SCALE FACTOR: .99972920 CALCULATED FROM THE S. 1/4 CORNER OF SECTION 8, T1N, R65W.
- WELL FOOTAGES ARE MEASURED AT RIGHT ANGLES TO THE SECTION LINES.



WELL PAD - ENGLISH FARMS 8-4HZ

MULTI-WELL PLAN
 ENGLISH FARMS 8-1HZ,
 ENGLISH FARMS 8-2HZ, ENGLISH FARMS 8-3HZ,
 ENGLISH FARMS 8-4HZ, ENGLISH FARMS 8-5HZ,
 ENGLISH FARMS 8-6HZ & ENGLISH FARMS 8-7HZ
 LOCATED IN SECTIONS 6, 7, 8, 17, 20 & 29
 T1N, R65W, 6TH P.M.
 WELD COUNTY, COLORADO

**Kerr-McGee Oil &
 Gas Onshore L.P.**

1099 18th Street
 Denver, Colorado 80202



CONSULTING, LLC

SHERIDAN OFFICE
 1095 Saberton Avenue
 Sheridan, Wyoming 82801
 Phone 307-674-0609

LOVELAND OFFICE
 1635 Foxtrail Drive, Suite 204
 Loveland, Colorado 80538
 Phone 970-776-4331

DRAFTED BY: LMO	CHECKED BY: RKF	SHEET NO: 1E 1E OF 1
DATE DRAFTED: 11/16/17	DATE SURVEYED: 9/14/17	
REVISED:	FILE NAME: 17-119	