

**COMPLETION
& PRODUCTION
SERVICES CO.**

**GAMMA RAY CCL
CEMENT BOND VDL**

Company NOBLE ENERGY INC.
Well GLENS NO. 9
Field WATTENBERG
County WELD
State COLORADO

Company NOBLE ENERGY INC.
Well GLENS NO. 9
Field WATTENBERG
County WELD State COLORADO

Location: 660' FNL & 1980' FWL
API #: 0512309861 Other Services
SEC 6 TWP 1N RGE 67W
Permanent Datum GL Elevation 5045
Log Measured From KB
Drilling Measured From KB
K.B. 5060
D.F. 5045
G.L. 5045

Date

APRIL 9, 2015

Run Number

ONE

Depth Driller

5930

Depth Logger

800

Bottom Logged Interval

800

Top Log Interval

SURFACE

Open Hole Size

WATER

Type Fluid

N/A

Density / Viscosity

N/A

Max. Recorded Temp.

N/A

Estimated Cement Top

BAYOU RIG

Time Well Ready

2-3/4 PROBE

Equipment Number

4838

Location

45

Recorded By

GREG NOLAN

Witnessed By

CHAD SAILORS

	Borehole Record		Tubing Record	
	Run Number	Bit	From	To
Casing Record				
Surface String				
Prof. String				
Production String				
Liner				

<<< Fold Here >>>

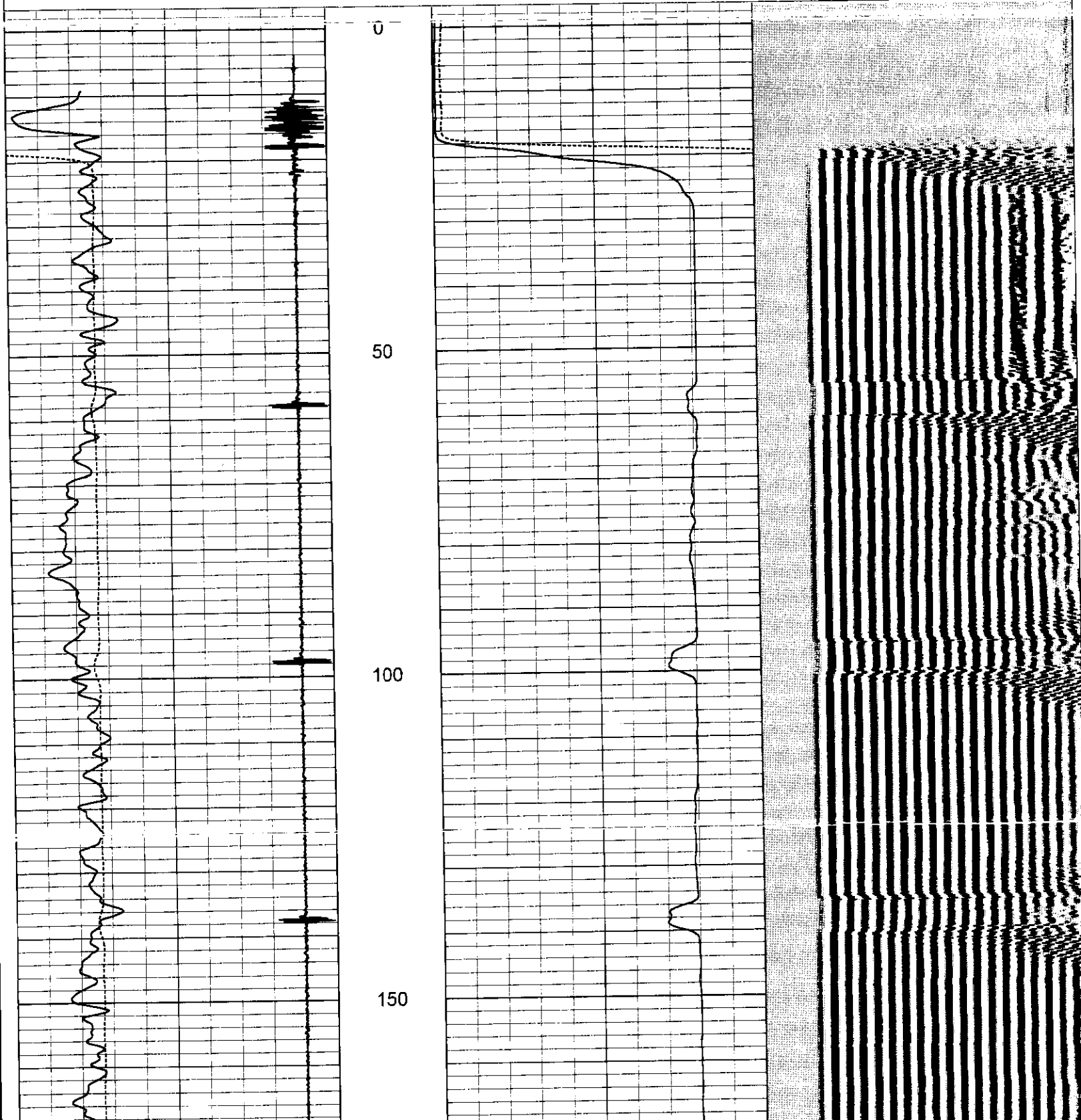
All interpretations are opinions based on inferences from electrical or other measurements and we cannot and do not guarantee the accuracy or correctness of any interpretation, and we shall not, except in the case of gross or willful negligence on our part, be liable or responsible for any loss, costs, damages, or expenses incurred or sustained by anyone resulting from any interpretation made by any of our officers, agents or employees. These interpretations are also subject to our general terms and conditions set out in our current Price Schedule.

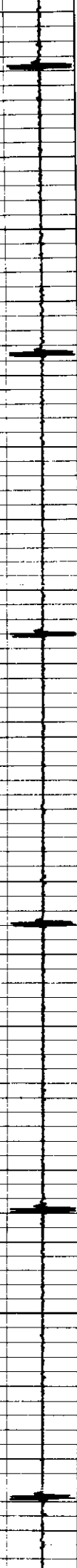
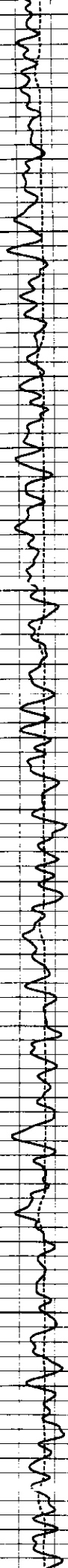
Comments

**THANK YOU FOR CHOOSING NCPS!!!
LOG NOT CORRELATED
WCR 15 & HWY 52, S.25, E INTO**

Database File: cbl pdc glens 9.db
 Dataset Pathname: pass2
 Presentation Format: noble en
 Dataset Creation: Thu Apr 09 17:36:36 2015 by Log SCH 120430
 Charted by: Depth in Feet scaled 1:240

50	CCL	-5.5	0	Amplified Amplitude (mV)	30	200	Variable Density	1200
0	Gamma Ray (GAPI)	150	0	Amplitude (mV)	100			
400	TT3 (usec)	0						



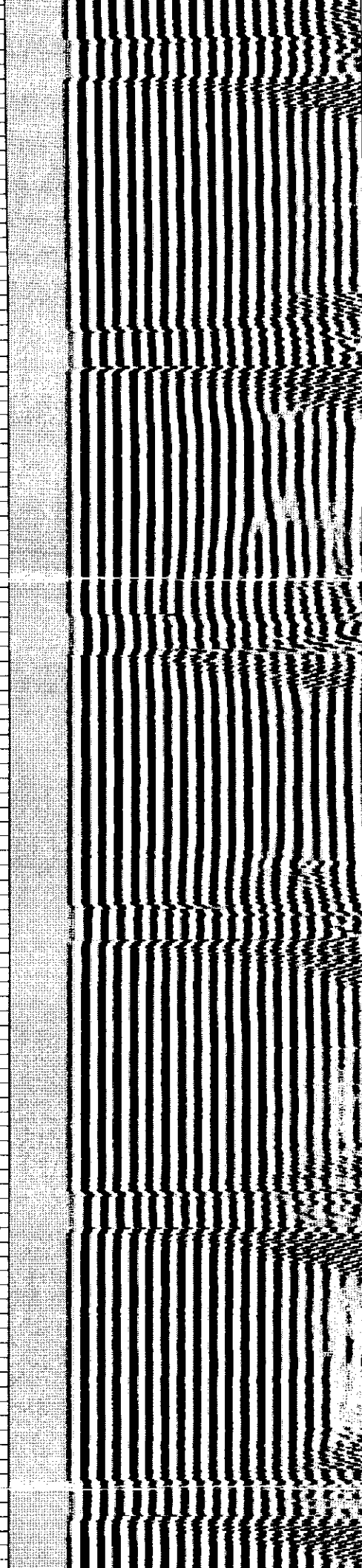
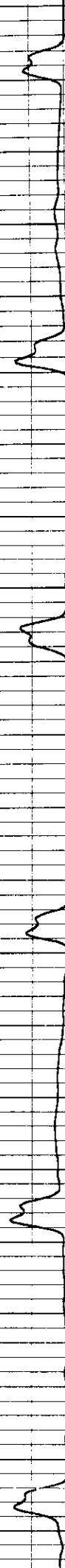


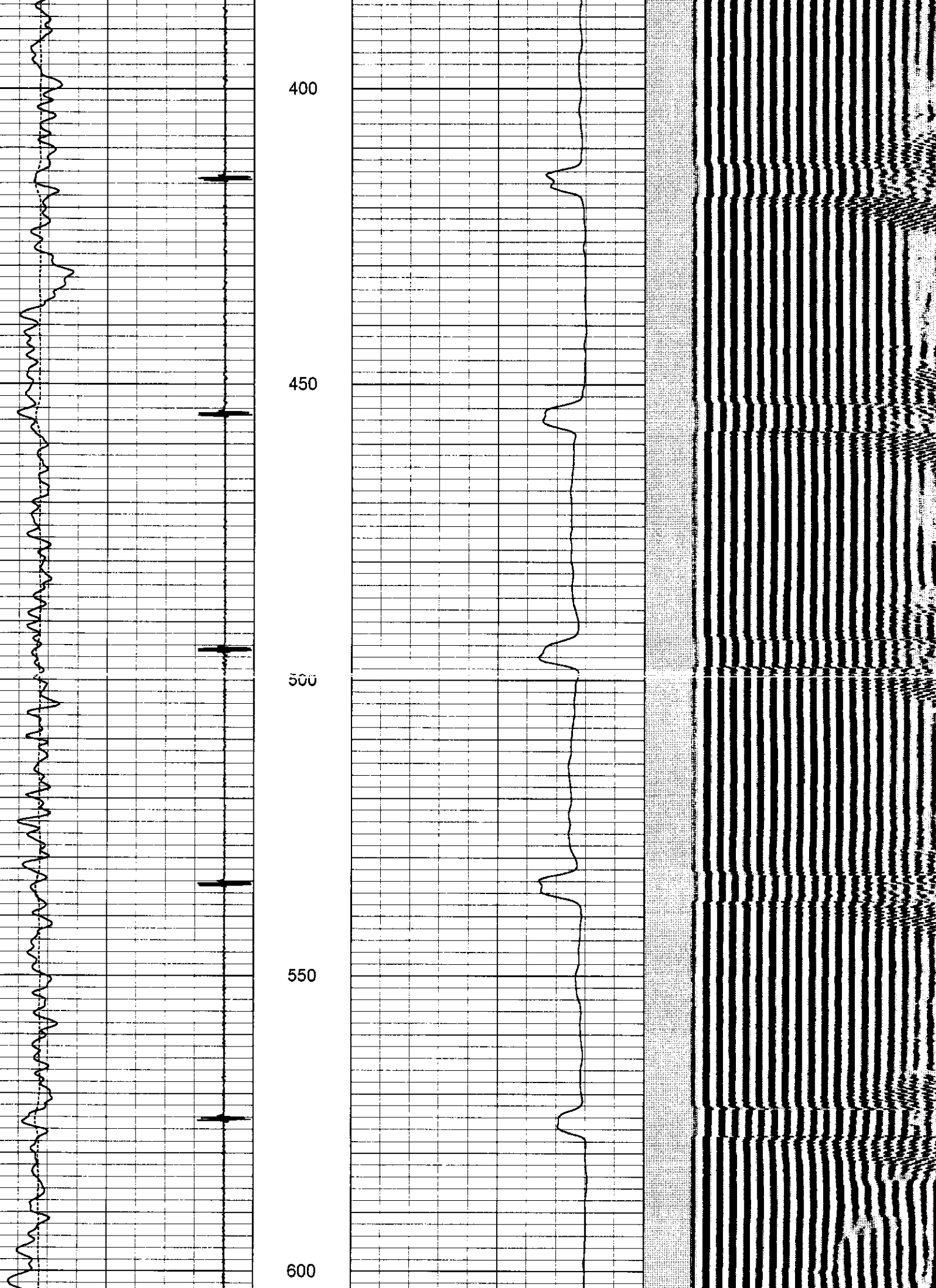
200

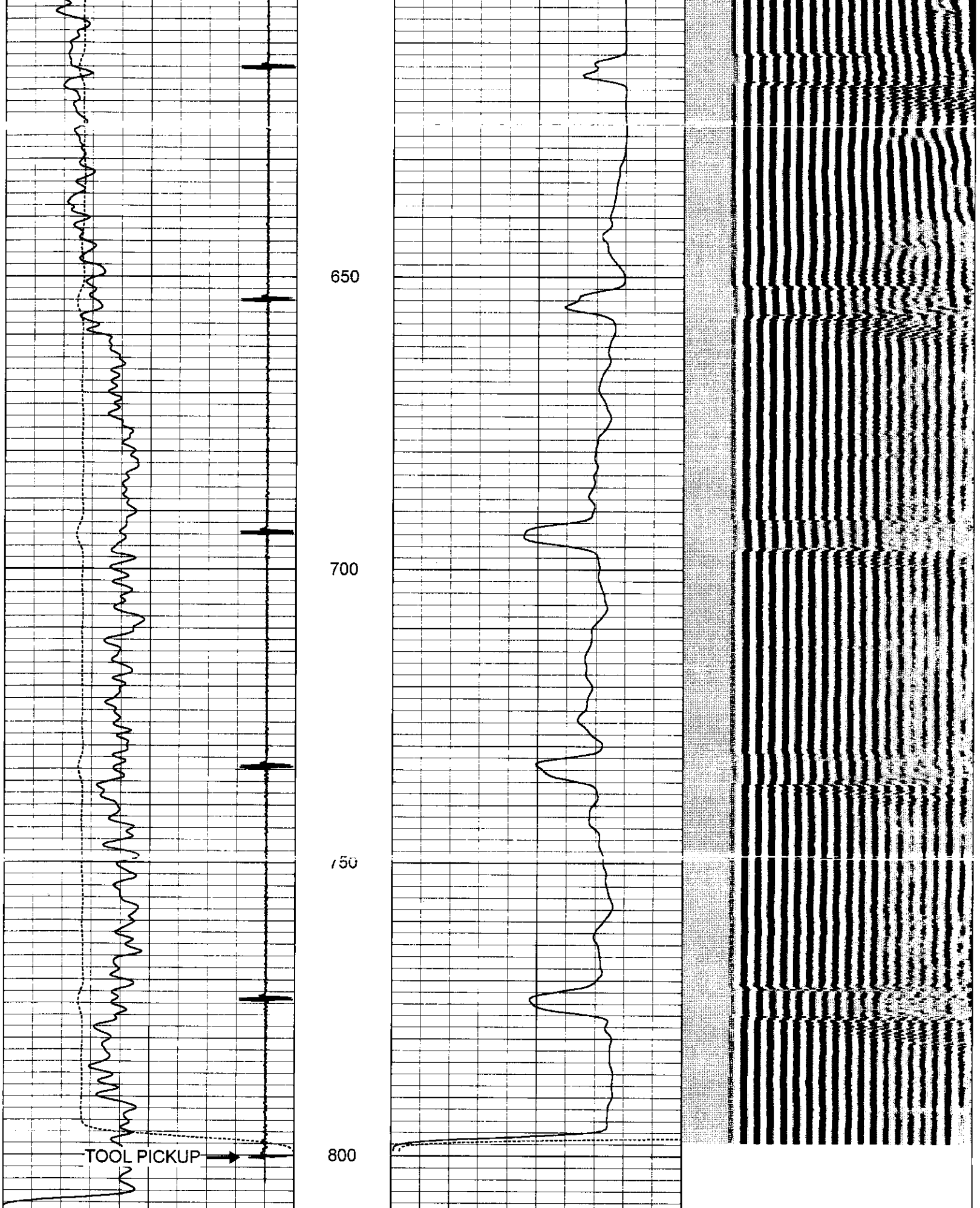
250

300

350







50	CCL	-5.5
0	Gamma Ray (GAPI)	150

0	Amplified Amplitude (mV)	30
0	Amplitude (mV)	100

200	Variable Density	1200
-----	------------------	------

