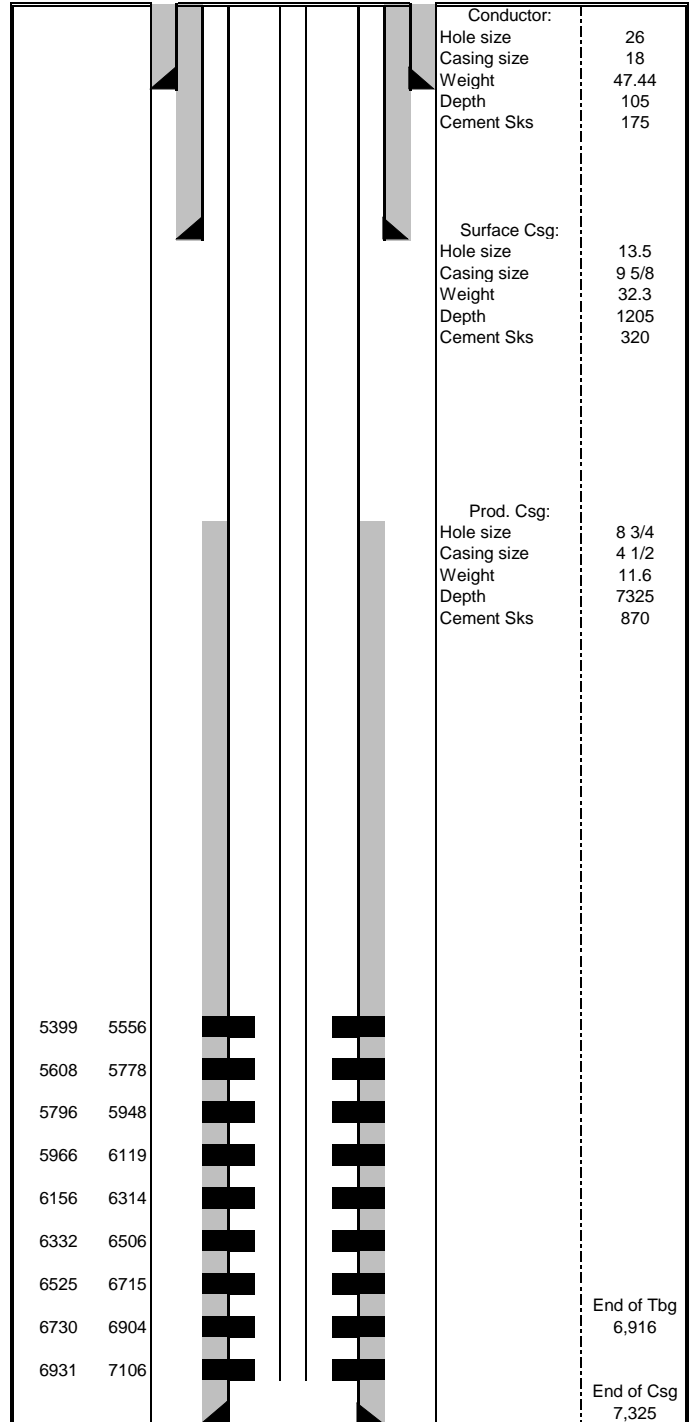


GM 423-4 Wellbore Diagram

Well	Pad	API	
GM 423-4	MV 34-5	05-045-23508	
Diagram Date	Spud Date	First Production Date	
1/8/2018	10/17/2017	12/14/2017	
Location	Meridian	County	
SESE	6th	Garfield	
Top Perf	Bottom Perf	Current EOT	
5,399	7,107	6,916	
Bottom Surf Csg	Bottom Prod Csg	TOC	
1,205	7,325	3,451	
TD	TVD	Elevation	
7,325	6,666	5,977	
PBTD	PBTVD	KB	
7,279	6,620	6,001	

Formation Tops	
Wasatch	
Wasatch G	2,593
Mesaverde	4,194
Ohio Creek	4,194
Williams Fork	4,411
Cameo	6,852
Rollins	7,182
Cozzette	
Corcoran	
Sego	



5399	5556
5608	5778
5796	5948
5966	6119
6156	6314
6332	6506
6525	6715
6730	6904
6931	7106

End of Tbg
6,916

End of Csg
7,325