

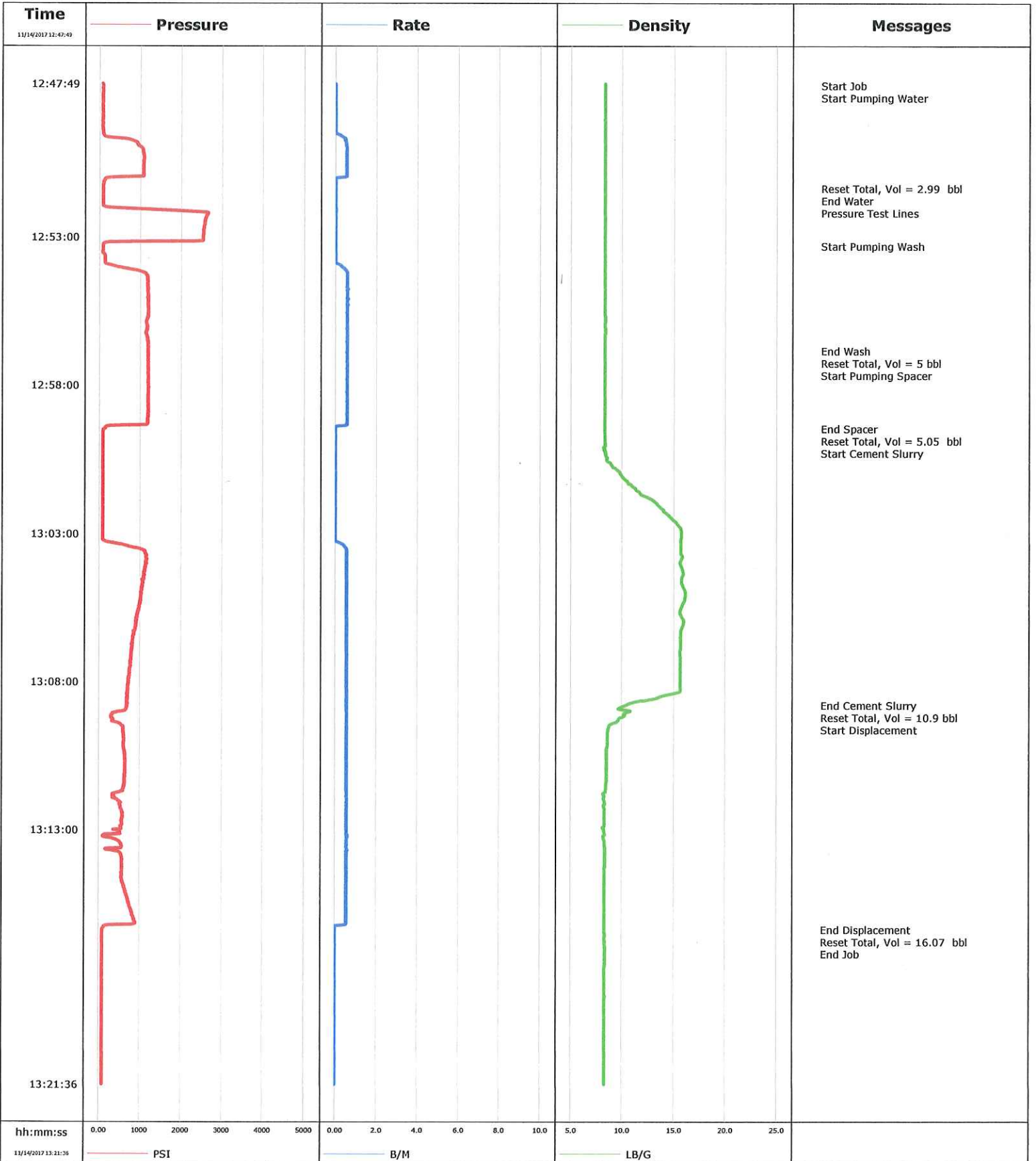
Customer ANADARKO PETROLEUM					Job Number 2606824		
Well UPRC-33-10J5 0631740845		Location (legal) WELD		Schlumberger Location CHEYENNE		Job Start Nov/14/2017	
Field DJ		Formation Name/Type		Deviation deg	Bit Size in	Well MD 71110.0 ft	Well TVD 7110.0 ft
County WELD		State/Province Colorado		BHP psi	BHST degF	BHCT degF	Pore Press. Gradient lb/gal
Well Master		API/UWI		Casing/Liner			
Rig Name BASIC# 1509	Drilled For Oil & Gas	Service Via Land	Depth, ft 7110.0	Size, in 3.5	Weight, lb/ft 7.7	Grade N80	Thread N/A
Offshore Zone N/A	Well Class Old	Well Type Workover	0.0	0.0	0.0		
Drilling Fluid Type		Max. Density lb/gal	Plastic Viscosity cP	Tubing/Drill Pipe			
Service Line Cementing	Job Type NIO PLUG	T/D T	Depth, ft 7110.0	Size, in 2.1	Weight, lb/ft 3.3	Grade J55	Thread N/A
0.0	0.0	0.0					
Max. Allowed Tub. Press psi		Max. Allowed Ann. Press psi		Perforations/Open Hole			
WH Connection 2 3/8" 4.7# T/S		Top, ft	Bottom, ft	shot/ft	No. of Shots	Total Interval ft	
Service Instructions 40 sks 1.53 ft3/sk 6.35 gps @ 15.8 ppg 5 bbls Water 5 bbls CW 5 bbls Water 10.9 bbls CMT 16 bbls Disp. est. TOC= 5917.5 ft		ft	ft			Diameter in	
ft	ft						
ft	ft						
Treat Down Tubing		Displacement 16.0 bbl		Packer Type		Packer Depth ft	
Tubing Vol. 10.9 bbl		Casing Vol. bbl		Annular Vol. bbl		Openhole Vol. bbl	
Casing/Tubing Secured <input type="checkbox"/>	1 Hole Vol. Circulated prior to Cement <input type="checkbox"/>	Casing Tools		Squeeze Job			
Lift Pressure psi		Shoe Type		Squeeze Type			
Pipe Rotated <input type="checkbox"/>	Pipe Reciprocated <input type="checkbox"/>	Shoe Depth ft		Tool Type			
No. Centralizers		Top Plugs	Bottom Plugs	Stage Tool Type		Tool Depth ft	
Cement Head Type		Stage Tool Depth ft		Tail Pipe Size in			
Job Scheduled For Nov/14/2017		Arrived on Location Nov/14/2017		Leave Location Nov/14/2017		Collar Type	
						Tail Pipe Depth ft	
						Collar Depth ft	
						Sqz. Total Vol. bbl	
Date	Time 24-hr clock	Treating Pressure PSI	Flow Rate B/M	Density LB/G	Volume BBL	Message	
11/14/2017	12:47:49	86	0.0	8.30	0.0		
11/14/2017	12:47:53	86	0.0	8.30	0.0	Start Job	
11/14/2017	12:47:55	86	0.0	8.30	0.0	Start Pumping Water	
11/14/2017	12:51:21	95	0.0	8.31	3.0	Reset Total, Vol = 2.99 bbl	
11/14/2017	12:51:40	91	0.0	8.30	3.0	End Water	
11/14/2017	12:51:41	91	0.0	8.30	3.0	Pressure Test Lines	
11/14/2017	12:52:50	2544	0.0	8.30	3.0		
11/14/2017	12:53:17	91	0.0	8.30	3.0	Start Pumping Wash	
11/14/2017	12:56:49	1180	0.6	8.31	8.6	End Wash	
11/14/2017	12:56:50	1180	0.6	8.31	8.7	Reset Total, Vol = 5 bbl	
11/14/2017	12:56:51	1185	0.6	8.31	8.7	Start Pumping Spacer	
11/14/2017	12:57:51	1189	0.6	8.31	10.7		
11/14/2017	12:59:27	155	0.0	8.31	13.7	End Spacer	
11/14/2017	12:59:28	136	0.0	8.31	13.7	Reset Total, Vol = 5.05 bbl	
11/14/2017	12:59:29	109	0.0	8.31	13.7	Start Cement Slurry	
11/14/2017	13:02:52	86	0.0	15.68	13.7		
11/14/2017	13:07:53	741	0.6	15.60	22.4		
11/14/2017	13:08:48	686	0.6	10.36	24.2	End Cement Slurry	
11/14/2017	13:08:49	681	0.6	10.22	24.3	Reset Total, Vol = 10.9 bbl	
11/14/2017	13:08:50	690	0.6	10.08	24.3	Start Displacement	
11/14/2017	13:12:54	535	0.6	8.22	32.8		

Well UPRC-33-10J5 0631740845		Field DJ		Job Start Nov/14/2017		Customer ANADARKO PETROLEUM		Job Number 2606824	
Date	Time 24-hr clock	Treating Pressure PSI	Flow Rate B/M	Density LB/G	Volume BBL	Message			
11/14/2017	13:16:23	91	0.0	8.31	40.3	Reset Total, Vol = 16.07 bbl			
11/14/2017	13:16:37	86	0.0	8.34	40.3	End Job			

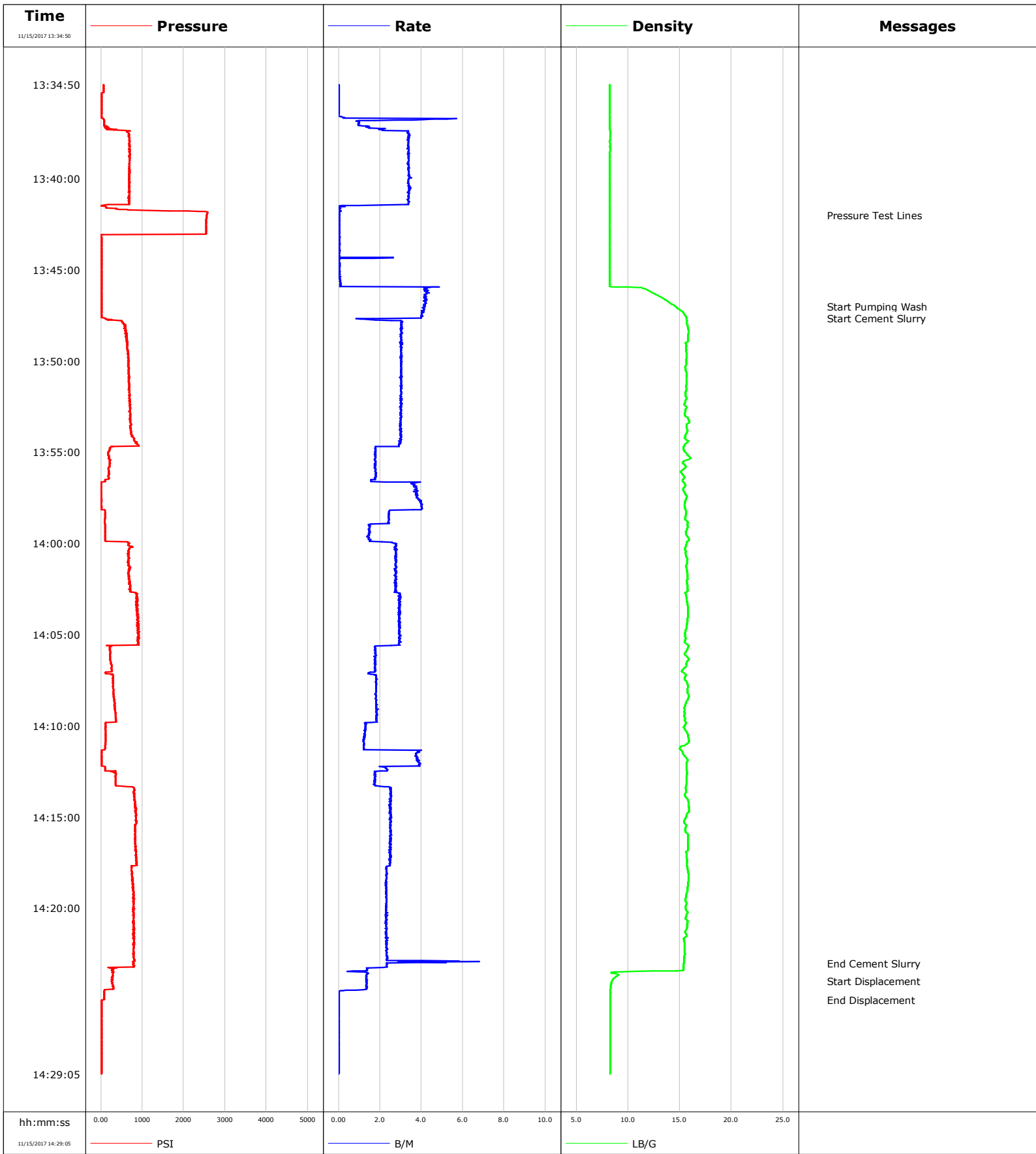
Post Job Summary

Average Pump Rates, bbl/min					Volume of Fluid Injected, bbl			
Slurry 2.6	N2	Mud	Maximum Rate 8.3	Total Slurry 10.9	Mud 0.0	Spacer 5.0	N2	
Treating Pressure Summary, psi					Breakdown Fluid			
Maximum 2654	Final 86	Average 616	Bump Plug to	Breakdown	Type	Volume bbl	Density lb/gal	
Avg. N2 Percent %	Designed Slurry Volume 10.9 bbl		Displacement 16.0 bbl	Mix Water Temp 65 degF	Cement Circulated to Surface? <input type="checkbox"/>	Volume bbl		
Customer or Authorized Representative LOGAN LEHNERT					Schlumberger Supervisor LUIS JIMENEZ	Washed Thru Perfs <input type="checkbox"/>	To ft	
					Circulation Lost <input type="checkbox"/>	Job Completed <input checked="" type="checkbox"/>		
					-	-		

Well	UPRC-33-10J5	Client	ANADARKO PETROLEUM
Field	DJ	SIR No.	2606824
Engineer	LUIS JIMENEZ	Job Type	NIO PLUG
Country	United States	Job Date	11-14-2017



Well	UPRC 33-10J5	Client	Anadarko
Field		SIR No.	da6t-01839
Engineer	Scot Thornton	Job Type	Stub
Country	United States	Job Date	11-15-2017



				Customer Anadarko			Job Number da6t-01839	
Well UPRC 33-10J5		Location (legal)			Schlumberger Location		Job Start Nov/15/2017	
Field		Formation Name/Type		Deviation deg	Bit Size in	Well MD ft	Well TVD ft	
County		State/Province Colorado		BHP psi	BHST degF	BHCT degF	Pore Press. Gradient lb/gal	
Well Master		API/UWI						
Rig Name	Drilled For N/A	Service Via Land		Casing/Liner				
				Depth, ft	Size, in	Weight, lb/ft	Grade	Thread
Offshore Zone	Well Class Old	Well Type Other						
Drilling Fluid Type		Max. Density lb/gal	Plastic Viscosity cP		Tubing/Drill Pipe			
				T/D	Depth, ft	Size, in	Weight, lb/ft	Grade
Service Line Cementing	Job Type Stub			T	1410.0	2.1	3.3	
					0.0	0.0	0.0	
Max. Allowed Tub. Press psi	Max. Allowed Ann. Press psi	WH Connection 2 3/8" 4.7# T/S		Perforations/Open Hole				
				Top, ft	Bottom, ft	shot/ft	No. of Shots	Total Interval ft
Service Instructions Pump 15 bbl chem Pressure Test 2500 Pump 81.6 bbl cement @ 15.8 ppg (395sks @ 1.15 yield) Displace 1.5 bbl EST TOC: 534				ft	ft			ft
				ft	ft			Diameter in
				ft	ft			in
				Treat Down	Displacement bbl	Packer Type	Packer Depth ft	
				Tubing Vol. bbl	Casing Vol. bbl	Annular Vol. bbl	Openhole Vol. bbl	
Casing/Tubing Secured <input checked="" type="checkbox"/>	1 Hole Vol. Circulated prior to Cement <input checked="" type="checkbox"/>			Casing Tools			Squeeze Job	
Lift Pressure psi			Shoe Type			Squeeze Type		
Pipe Rotated <input type="checkbox"/>	Pipe Reciprocated <input type="checkbox"/>			Shoe Depth	ft	Tool Type		
No. Centralizers	Top Plugs	Bottom Plugs		Stage Tool Type			Tool Depth ft	
Cement Head Type			Stage Tool Depth	ft	Tail Pipe Size in			
Job Scheduled For Nov/15/2017 13:00	Arrived on Location Nov/15/2017 13:00	Leave Location Nov/15/2017		Collar Type		Tail Pipe Depth ft		
				Collar Depth	ft	Sqz. Total Vol. bbl		
Date	Time 24-hr clock	Treating Pressure PSI	Flow Rate B/M	Density LB/G	Volume BBL	Message		
11/15/2017	13:34:50	68	0.0	8.25	0.0	Started Acquisition		
11/15/2017	13:39:00	699	3.4	8.25	6.8			
11/15/2017	13:42:00	2558	0.1	8.25	15.1	Pressure Test Lines		
11/15/2017	13:43:10	4	0.1	8.25	15.2			
11/15/2017	13:47:00	17	4.2	14.56	15.2	Start Pumping Wash		
11/15/2017	13:47:20	17	4.1	15.33	15.2			
11/15/2017	13:51:30	681	3.0	15.63	26.8			
11/15/2017	13:55:40	205	1.8	15.43	38.1			
11/15/2017	13:59:50	104	1.5	15.88	43.0			
11/15/2017	14:04:00	883	2.9	15.81	54.6			
11/15/2017	14:08:10	301	1.8	15.77	63.9			
11/15/2017	14:12:20	104	2.3	15.67	69.1			
11/15/2017	14:16:30	832	2.5	15.78	78.9			
11/15/2017	14:20:40	791	2.3	15.71	88.8			
11/15/2017	14:23:00	800	2.3	15.39	94.4	End Cement Slurry		
11/15/2017	14:24:00	260	1.4	8.45	96.0	Start Displacement		
11/15/2017	14:24:50	72	0.0	8.30	96.7			
11/15/2017	14:25:00	77	0.0	8.30	96.7	End Displacement		

Well UPRC 33-10J5	Field	Job Start Nov/15/2017	Customer Anadarko	Job Number da6t-01839
-----------------------------	--------------	---------------------------------	-----------------------------	---------------------------------

Post Job Summary

Average Pump Rates, bbl/min					Volume of Fluid Injected, bbl			
Slurry 2.2	N2	Mud	Maximum Rate 6.8	Total Slurry 81.6	Mud 0.0	Spacer 15.0	N2	
Treating Pressure Summary, psi					Breakdown Fluid			
Maximum 2581	Final 17	Average 485	Bump Plug to	Breakdown	Type	Volume bbl	Density lb/gal	
Avg. N2 Percent %	Designed Slurry Volume 0.0 bbl	Displacement 1.5 bbl	Mix Water Temp degF	Cement Circulated to Surface? <input type="checkbox"/>	Volume bbl			
				Washed Thru Perfs <input type="checkbox"/>	To ft			
Customer or Authorized Representative Logan Lehnert			Schlumberger Supervisor Scot Thornton		Circulation Lost <input type="checkbox"/>	Job Completed <input checked="" type="checkbox"/>		
					-	-		