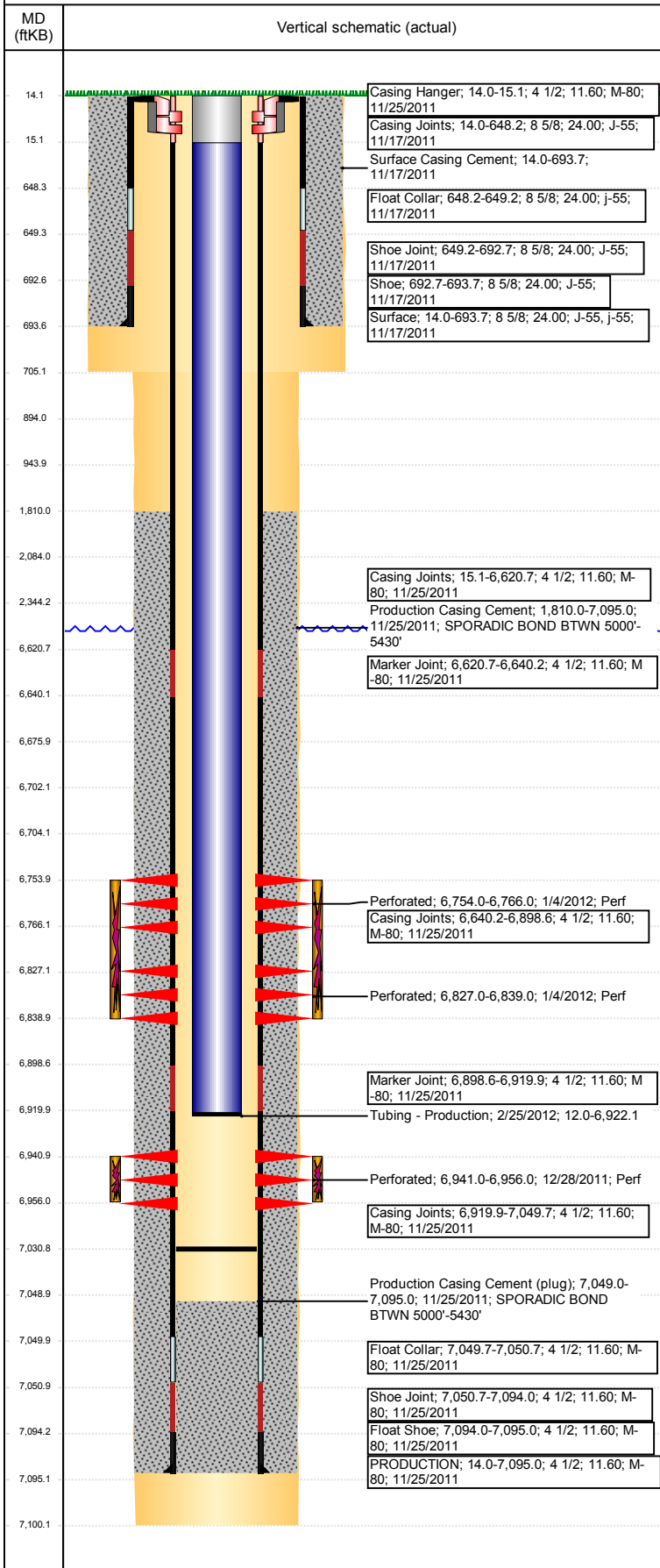


Well Name: STATE C16-20D

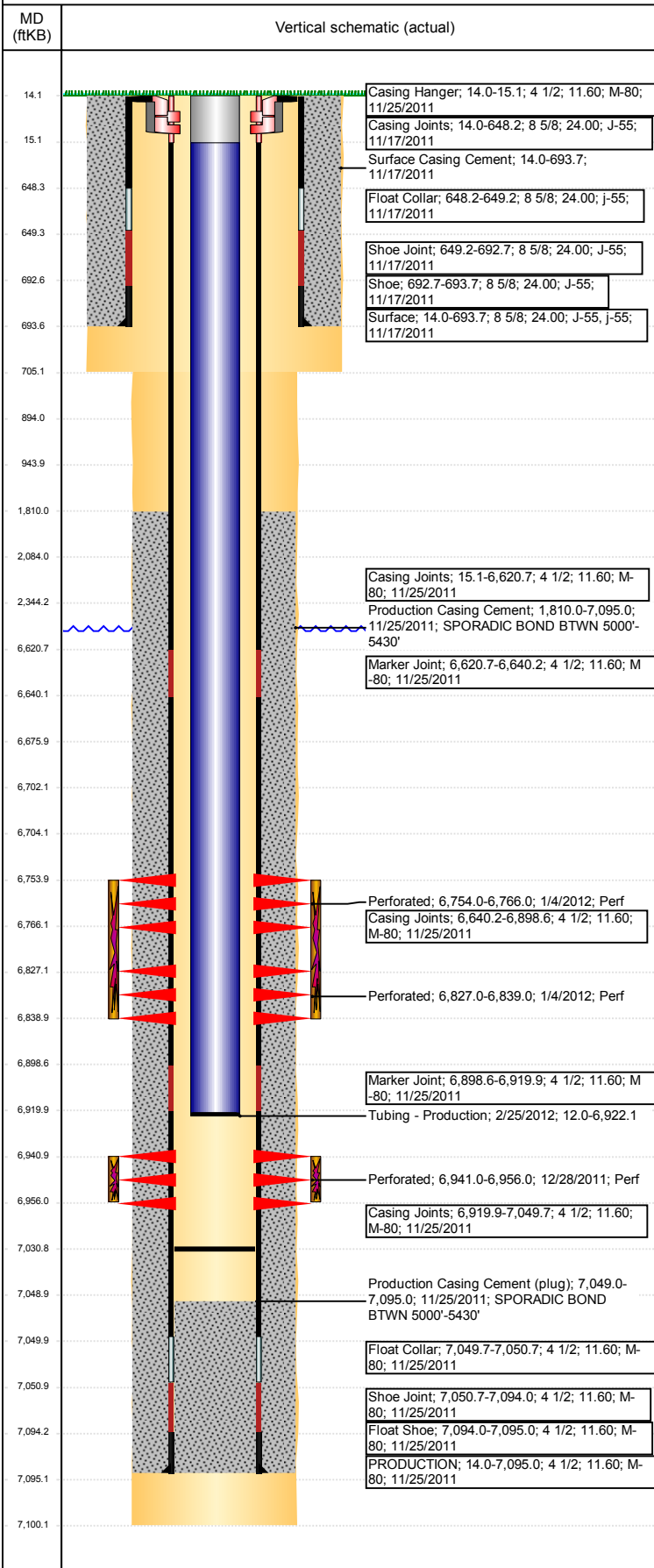
DEVIATED - ORIGINAL HOLE, 1/5/2018 4:35:53 PM



Well Header							
API 05-123-34266	Business Unit DJ BASIN	District 15	Well Config DEVIATED				
Original KB Elevation (ft) 4,698	KB - GL / MSL (ftKB) 14.00	Spud Date 11/16/2011	P & A Date				
Comment DISCREPANCY: STATE & DAILY RPTS TD 7100, DRILLER DEPTH 7108. FIELD OPERATIONS NOTICE - FLOWLINES ABANDONED PER RULE 1103, RCVD 6/28/17.							
Directions To Well FROM WCR 53 & 44, GO NORTH 0.2 MILES, EAST 0.1 MILES, NORTH 500 FEET THEN WEST 500 FEET INTO LOCATION.							
Congressional Location							
Quarter 3 NW	Quarter 4 SW	Section 16	Township 4	Twnshp N/S Dir N	Range 64	Range E/W Dir W	
Bottom Hole Location							
North-South Distance (ft) 2,550.0	From N or S Line FSL	East-West Distance (ft) 1,239.0	From E or W Line FWL				
Plug Back Total Depths							
Date	Depth (ftKB)	Method	Com				
11/25/2011	7,049.0	CASING TALLY	FLOAT COLLAR				
12/27/2011	7,049.0	TUBING TALLY					
12/28/2011	7,034.0	CASED HOLE LOG	DEPTH LOGGER ON CBL				
2/25/2012	7,031.0	TUBING TALLY					
Wellbore Sections							
Section Des	Size (in)	Act Top, MD (ftKB)	Act Btm, MD (ftKB)				
SURFACE	12 1/4	14	705				
PRODUCTION	7 7/8	705	7,100				
Zone Statuses							
Zone Name	Status Date	Status	Fluid Type	Job	Prod Method		
CODELL	1/5/2012	PR		DRILLING/CO...			
CODELL	1/5/2012	PR	Water		Flowing		
NIOBRARA	1/5/2012	PR		DRILLING/CO...			
NIOBRARA	1/5/2012	PR	Water		Flowing		
NIOBRARA	10/27/2016	SI					
Casing Strings							
Surface, 693.7ftKB							
Casing Description	Run Date	OD (in)	W/Len (L...)	Grade	Top, MD (ft...)	MD (ftKB)	
Surface	11/17/2011	8 5/8	24.00	J-55	14.0	693.7	
PRODUCTION, 7,095.0ftKB							
Casing Description	Run Date	OD (in)	W/Len (L...)	Grade	Top, MD (ft...)	MD (ftKB)	
PRODUCTION	11/25/2011	4 1/2	11.60	M-80	14.0	7,095.0	
Cement							
Description	Top Depth (ftKB)	Bottom Depth (ftKB)					
Surface Casing Cement	14.0	693.7					
Description	Top Depth (ftKB)	Bottom Depth (ftKB)					
Production Casing Cement	1,810.0	7,095.0					
Description	Top Depth (ftKB)	Bottom Depth (ftKB)					
DUMP BAIL	6,676.0	6,702.0					
Description	Top Depth (ftKB)	Bottom Depth (ftKB)					
SHOE PLUG	14.1	894.0					
Description	Top Depth (ftKB)	Bottom Depth (ftKB)					
SHOE PLUG	894.0	944.0					
Description	Top Depth (ftKB)	Bottom Depth (ftKB)					
COURTESY PLUG	2,084.0	2,344.0					
Tubing Strings							
Tubing Description	Run Date	String... 2 3/8	ID (in) 2.00	Wt (lb/ft) 4.70	Grade J-55	Len (ft) 6,910.09	Set De... 6,828.5
Tubing - Production	2/25/2012						
Tubing Components							
Item Des	OD (in)	Wt (lb/ft)	Grade	Jts	Len (ft)	Btm (ftKB)	Btm (TVD) (ftKB)
Tubing Pup Joint	2 3/8	4.70	J-55	1	10.00	22.0	
Tubing	2 3/8	4.70	J-55	222	6,898.44	6,920.4	
Pump Seating	2 3/8	4.70	J-55	1	1.10	6,921.5	6,828.0
Nipple							
Notched collar	2 3/8	4.70	J-55	1	0.55	6,922.1	6,828.5
Other In Hole							
Run Date	Des	OD (in)	Top (ftKB)	Btm (ftKB)			
2/25/2012	Cast Iron Bridge Plug	4	6,702.0	6,704.0			

Well Name: STATE C16-20D

DEVIATED - ORIGINAL HOLE, 1/5/2018 4:35:54 PM



Logs			
Date	Type	Top, MD (ftKB)	Btm, MD (ftKB)
11/24/2011	SPECTRAL DENSITY/Pe/DSN NEUTRON/SP/ARRAY COMPENSATED TRUE RESISTIVITY	693.0	7,048.0
11/24/2011	SPECTRAL GAMMA RAY	693.0	7,014.0
12/28/2011	CBL/CCL/GR	1,450.0	7,034.0

Perforation Data					
Linked Zone	Bnch/St g	Sum of Entered Shot Total	Top (ftKB)	Btm (ftKB)	Date
NIOBRARA, ORIGINAL HOLE	A	24	6,754.00	6,766.00	1/4/2012
NIOBRARA, ORIGINAL HOLE	B	24	6,827.00	6,839.00	1/4/2012
CODELL, ORIGINAL HOLE		60	6,941.00	6,956.00	12/28/2011
Total (Sum)		108			

Stimulation Intervals		
Start Date	Primary Job Type	
1/4/2012	DRILLING/COMPLETION - ORIGINAL	
Technical Result	Tech Result Details	Tech Result Note
Success	According to Plan	

Comment
(CODELL) REVERSE STEP RATE @ 116 BBLS AWAY , ISIP = 2540 , F.G. = 0.8 , 5 MIN = 1570 PERFS OPEN = 14 , PERF FRICTION = 310 , NEAR WELLBORE FRICTION = 391 , WELLBORE FRICTION = 452 , TOTAL FRICTION = 1153 . INCREASED RATE TO 25 BPM DUE TO LOW 5 MIN. (POST JOB) SHUT DOWN FOR 1 HOUR TO REPAIR BLENDER 10 BBLS AFTER BREAKDOWN. NO OTHER ISSUES TO REPORT. FINAL ISIP = 3673 , FINAL F.G. = 0.96 , FINAL 5 MIN = 3378

Start Date	Primary Job Type	
1/4/2012	DRILLING/COMPLETION - ORIGINAL	
Technical Result	Tech Result Details	Tech Result Note
Success	According to Plan	

Comment
(NIOBRARA B&C) JOB WENT WELL NO ISSUES TO REPORT , FINAL ISIP = 3691 , F.G. = 0.98 , FINAL 5 MIN = 3523