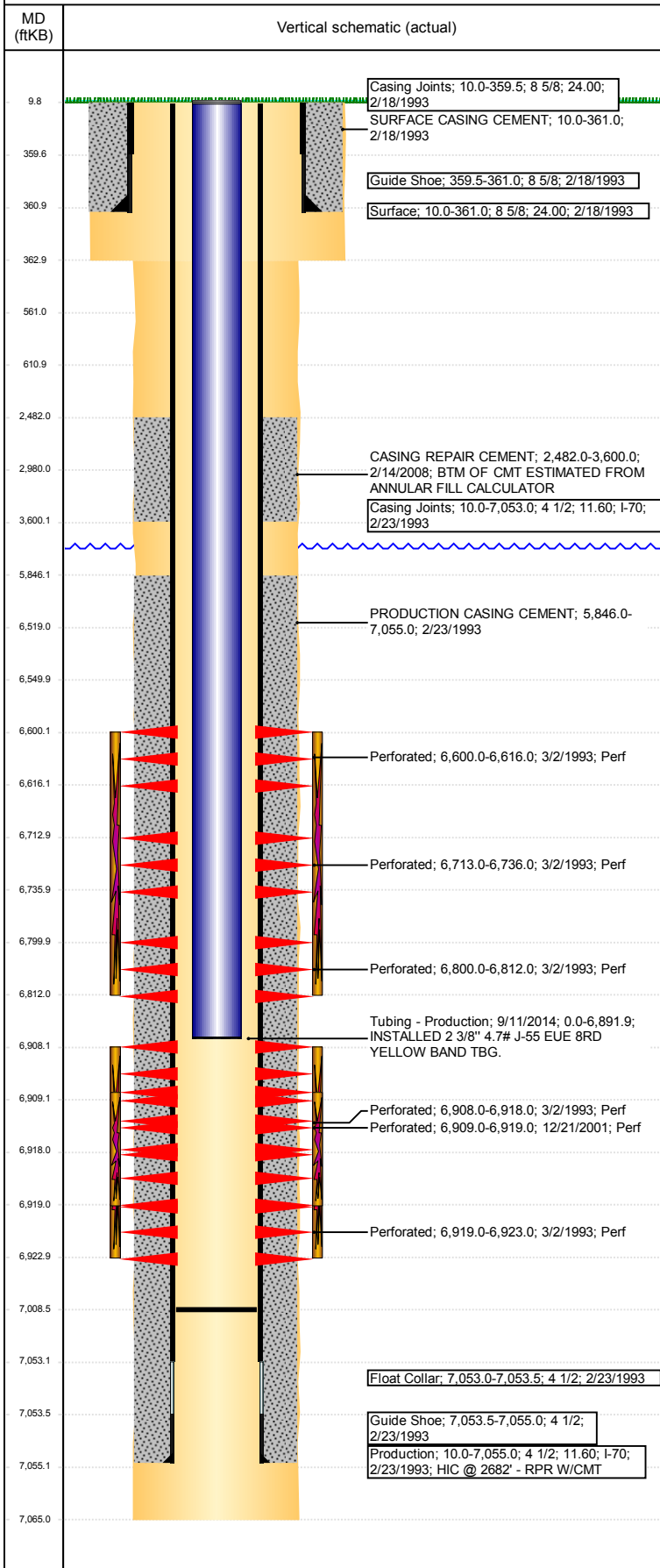


Well Name: HEPBERGER 11-24

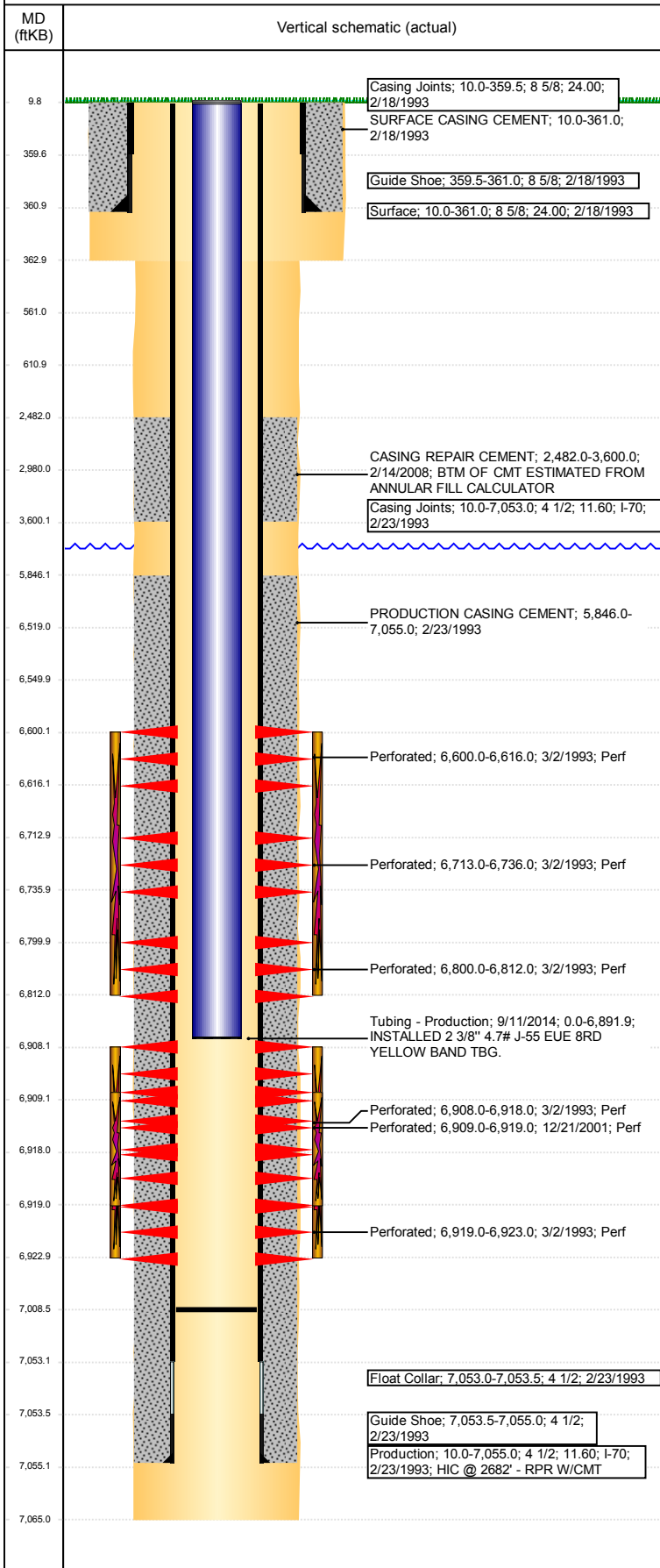
VERTICAL - ORIGINAL HOLE, 1/5/2018 4:38:20 PM



Well Header							
API	05-123-16756	Business Unit	DJ BASIN	District	15	Well Config	VERTICAL
Original KB Elevation (ft)	4,645	KB - GL / MSL (ftKB)	10.00	Spud Date	2/18/1993	P & A Date	
Comment							
HIC @ 2682' - RPR W/CMT							
Directions To Well							
HWY 34 & WCR 47, SOUTH 0.7, SOUTHEAST & EAST 0.4, NORTH INTO.							
Congressional Location							
Quarter 3	Quarter 4	Section	Township	Twntshp N/S Dir	Range	Range E/W Dir	
NE	SW	24	5	N	65	W	
Bottom Hole Location							
North-South Distance (ft)		From N or S Line		East-West Distance (ft)		From E or W Line	
Plug Back Total Depths							
Date	Depth (ftKB)	Method		Com			
3/2/1993	6,963.0	CASED HOLE LOG		DEPTH LOGGER ON CBL			
3/11/1993	7,018.0	TAG		CLEAN OUT TO LAND TUBING			
2/20/2008	6,890.0	TAG		TAG TO LAND TUBING			
6/9/2014	7,015.7	TAG		TBG TALLY MEASUREMENT.			
9/10/2014	7,008.4	TBG TAG					
Wellbore Sections							
Section Des		Size (in)	Act Top, MD (ftKB)		Act Btm, MD (ftKB)		
SURFACE		12 1/4	10		363		
PRODUCTION		7 7/8	363		7,065		
Zone Statuses							
Zone Name	Status Date	Status	Fluid Type	Job	Prod Method		
NIOBRARA	6/5/1993	PR		DRILLING/CO...			
CODELL	6/5/1993	PR		DRILLING/CO...			
CODELL	2/6/2002	PR		RE-FRAC, 12/2...			
Casing Strings							
Surface, 361.0ftKB							
Casing Description	Run Date	OD (in)	Wt/Len (l...)	Grade	Top, MD (ft...)	MD (ftKB)	
Surface	2/18/1993	8 5/8	24.00		10.0	361.0	
Production, 7,055.0ftKB							
Casing Description	Run Date	OD (in)	Wt/Len (l...)	Grade	Top, MD (ft...)	MD (ftKB)	
Production	2/23/1993	4 1/2	11.60	I-70	10.0	7,055.0	
Cement							
Description	Top Depth (ftKB)		Bottom Depth (ftKB)				
SURFACE CASING CEMENT	10.0		361.0				
PRODUCTION CASING CEMENT	5,846.0		7,055.0				
CASING REPAIR CEMENT	2,482.0		3,600.0				
Balance Plug	2,482.0		2,980.0				
Shoe Plug	561.0		611.0				
Shoe Plug	10.0		561.0				
Tubing Strings							
Tubing Description	Run Date	String ...	ID (in)	Wt (lb/ft)	Grade	Len (ft)	Set De...
Tubing	2/20/2008	2 3/8	2.00	4.70	J-55	6,866.00	
Tubing Components							
Item Des	OD (in)	Wt (lb/ft)	Grade	Jts	Len (ft)	Btm (ftKB)	Btm (TVD) (ftKB)
EUE 8rd Tubing	2 3/8	4.70	J-55	210	6,864.00	6,874.0	
Seal Nipple	2 3/8			1	1.00	6,875.0	
Notched collar	2 3/8			1	1.00	6,876.0	
Tubing Description	Run Date	String ...	ID (in)	Wt (lb/ft)	Grade	Len (ft)	Set De...
Tubing - Production	9/11/2014	2 3/8	2.00	4.70	J-55	6,891.88	
Tubing Components							
Item Des	OD (in)	Wt (lb/ft)	Grade	Jts	Len (ft)	Btm (ftKB)	Btm (TVD) (ftKB)
Tubing Pup Joint	2 3/8	4.70	J-55	1	10.00	10.0	
Tubing Pup Joint	2 3/8	4.70	J-55	1	10.00	20.0	
EUE 8rd Tubing	2 3/8	4.70	J-55	219	6,870.36	6,890.4	
Seat Nipple	2 3/8	4.70	N-80	1	1.10	6,891.5	

Well Name: HEPBERGER 11-24

VERTICAL - ORIGINAL HOLE, 1/5/2018 4:38:21 PM



Tubing Components							
Item Des	OD (in)	Wt (lb/ft)	Grade	Jts	Len (ft)	Btm (ftKB)	Btm (TVD) (ftKB)
Notched collar	3 1/16	4.70	J-55	1	0.42	6,891.9	

Other In Hole				
Run Date	Des	OD (in)	Top (ftKB)	Btm (ftKB)
9/10/2014	Cast Iron Bridge Plug w/ 2 SX Cement	3.99	6,519.0	6,550.0

Logs			
Date	Type	Top, MD (ftKB)	Btm, MD (ftKB)
2/23/1993	COMPENSATED DENSITY	4,200.0	7,063.0
2/23/1993	INDUCTION	357.0	7,063.0
3/2/1993	CEMENT BOND	5,760.0	6,958.0
11/3/2016	GYRO	0.0	6,800.0

Perforation Data					
Linked Zone	Bnch/St g	Sum of Entered Shot Total	Top (ftKB)	Btm (ftKB)	Date
NIOBRARA, ORIGINAL HOLE		8	6,600.00	6,616.00	3/2/1993
NIOBRARA, ORIGINAL HOLE		6	6,713.00	6,736.00	3/2/1993
NIOBRARA, ORIGINAL HOLE		2	6,800.00	6,812.00	3/2/1993
CODELL, ORIGINAL HOLE		20	6,908.00	6,918.00	3/2/1993
CODELL, ORIGINAL HOLE		20	6,909.00	6,919.00	12/21/2001
CODELL, ORIGINAL HOLE		4	6,919.00	6,923.00	3/2/1993
Total (Sum)		60			

Stimulation Intervals		
Start Date	Primary Job Type	
3/8/1993	DRILLING/COMPLETION - ORIGINAL	
Technical Result	Tech Result Details	Tech Result Note
Comment		
Start Date	Primary Job Type	
12/28/2001	RE-FRAC	
Technical Result	Tech Result Details	Tech Result Note
Comment		
Start Date	Primary Job Type	
3/11/1993	DRILLING/COMPLETION - ORIGINAL	
Technical Result	Tech Result Details	Tech Result Note
Comment		