

Interim Reclamation and Stormwater Inspection

January 3, 2018

Operator: GADECO LLC- #10673

Location ID: 441995

Weld County, CO

NWNW Section 24 T12N R65W

Chris Binschus
Reclamation Specialist, COGCC



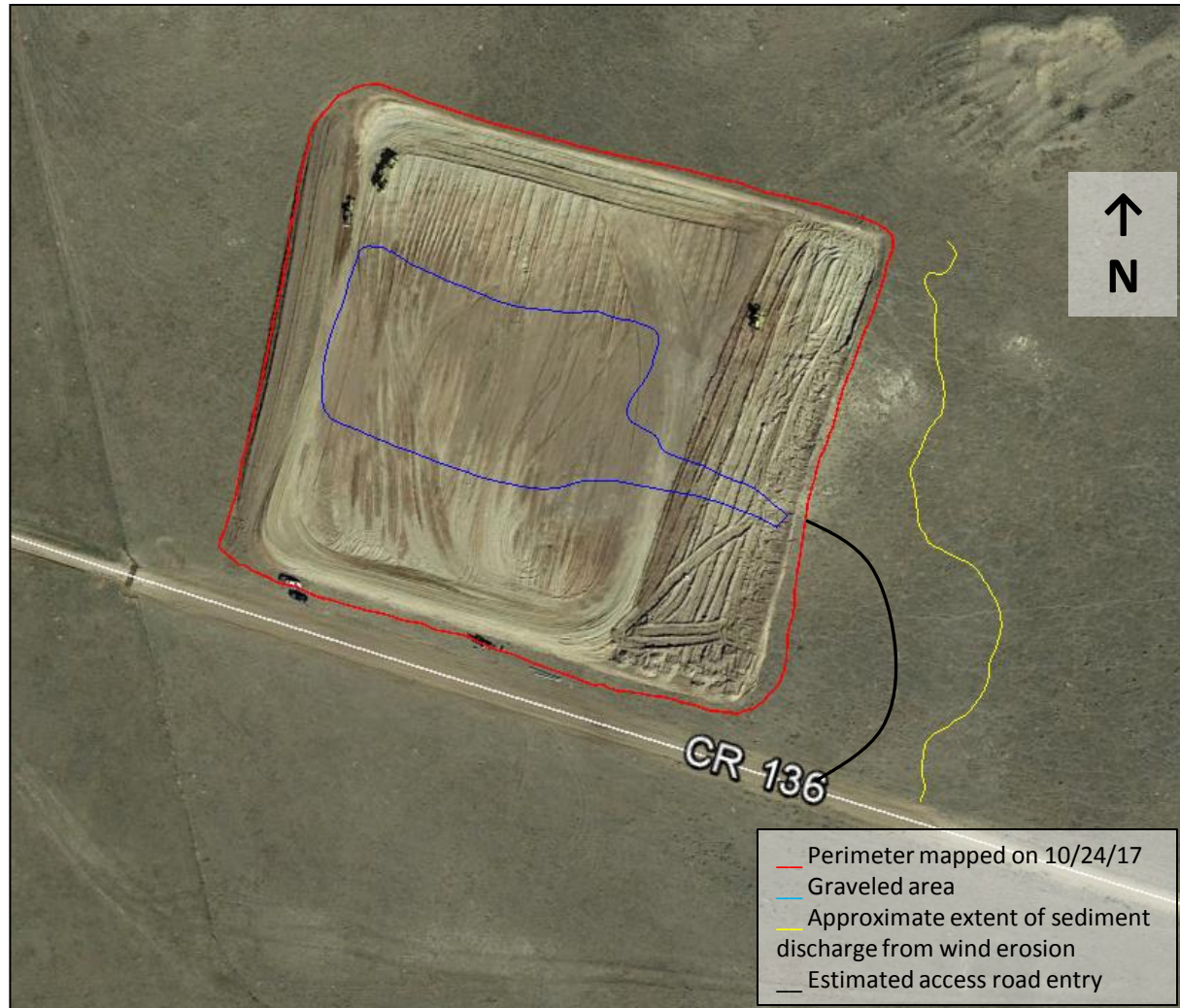
COLORADO
Oil & Gas Conservation
Commission

Department of Natural Resources

Inspection Photos

Location Name: Grynberg Stateline Federal /24-12-65-4 Pad

Location ID: 441995



Google Earth aerial imagery taken October 14, 2017. This image does not illustrate the total disturbance with the access road. Sediment discharge was easily observed up to 110' east of the location perimeter but has discharged further. A Trimble Juno 3B handheld device was used to map the features, minus the access road which was estimated.

Inspection Photos

Location Name: Grynberg Stateline Federal /24-12-65-4 Pad

Location ID: 441995



Photo 1. Photo taken from the east central well pad, facing West on January 3, 2018. Sediment discharge off location is evident due to wind erosion from unconsolidated soil material from the well pad. Operator has only stabilized a portion of the well pad with gravel for access to the wellhead and around the wellhead. All other areas of the well pad have been left unconsolidated which appear to be the cause of wind erosion off location.

Inspection Photos

Location Name: Grynberg Stateline Federal /24-12-65-4 Pad

Location ID: 441995



Photo 2. Photo taken from the southern well pad, facing West on January 3, 2018. The southern and northern well pad areas have not been stabilized and left unconsolidated which appears to be the cause of wind erosion off location.



Photo 3. Photo taken from the southern well pad, facing East on January 3, 2018. See comments under Photo 2.

Inspection Photos
Location Name: Grynberg Stateline Federal /24-12-65-4 Pad
Location ID: 441995



Photo 4. Photo taken from the southern well pad, facing West on January 3, 2018. See comments under Photo 2.

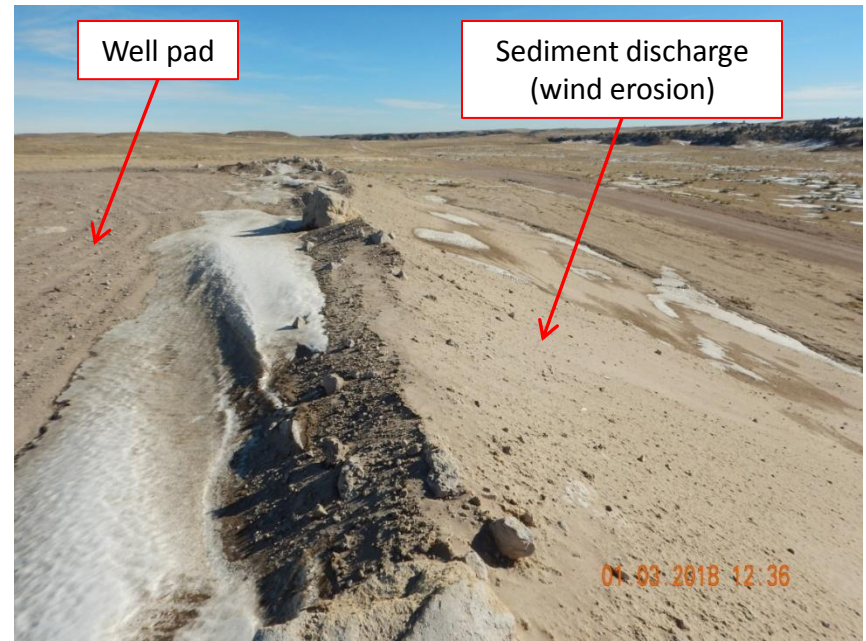


Photo 5. Photo taken from the southern well pad, facing East on January 3, 2018. See comments under Photo 2.

Inspection Photos

Location Name: Grynberg Stateline Federal /24-12-65-4 Pad

Location ID: 441995

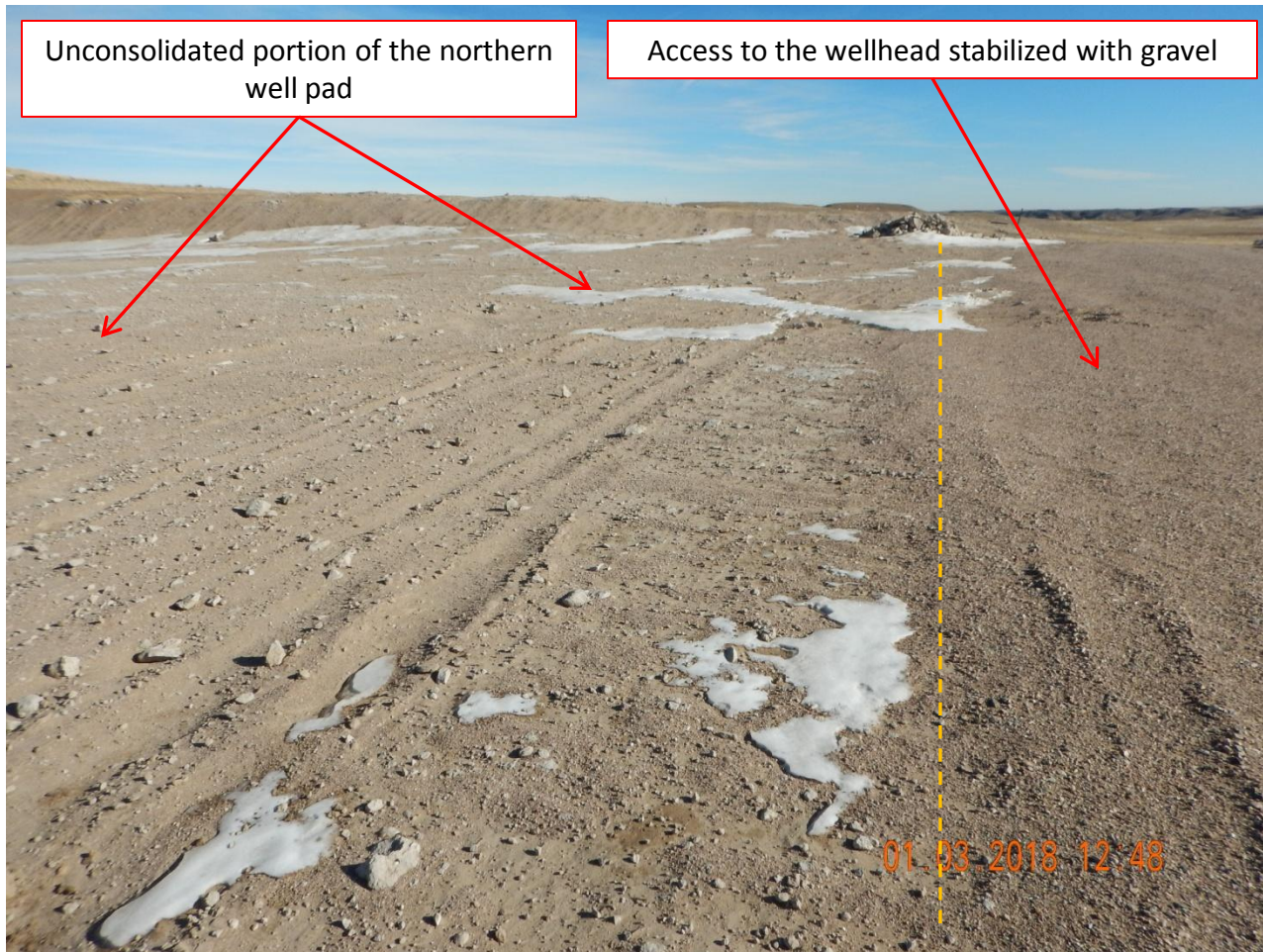


Photo 6. Photo taken from the eastern well pad, facing East on January 3, 2018. See comments under Photo 1.

Inspection Photos

Location Name: Grynberg Stateline Federal /24-12-65-4 Pad

Location ID: 441995



Photo 7. Photo taken from the east well pad, facing North on January 3, 2018. Photo illustrates accumulation of unconsolidated soil material from the well pad which is contributing to sediment discharge off location.

Inspection Photos

Location Name: Grynberg Stateline Federal /24-12-65-4 Pad

Location ID: 441995



Photo 8. Photo taken from the southwest location, facing East on October 24, 2017.

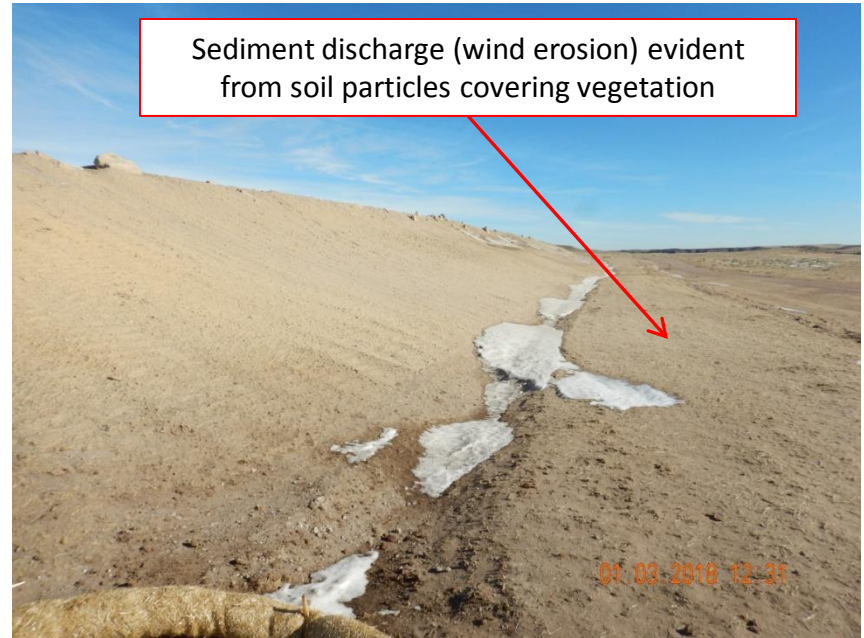


Photo 9. Photo taken from the southwest location, facing East on January 3, 2018. Since the October inspection, it appears the Operator has tracked the fill slope and applied a hydromulch. However, sediment discharge off location is evident due to wind erosion from unconsolidated soil material from the well pad. Sediment material is being deposited onto vegetation off location. Ditch BMP along the perimeter is in need of maintenance and have not been properly installed.

Inspection Number: 682403162

Inspection Photos

Location Name: Grynberg Stateline Federal /24-12-65-4 Pad

Location ID: 441995



Photo 10. Photo taken from the southwest location, facing West on January 3, 2018. Operator has not installed a sufficient sediment trap for a total disturbance of 9.29 acres (Document #401464525 still IN-PROCESS). Sediment trap size is ~3'x3'x2' and was the only observed sediment trap at location. In addition, the sediment trap has not been installed with good engineering practices.

Inspection Photos

Location Name: Grynberg Stateline Federal /24-12-65-4 Pad

Location ID: 441995



Photo 11. Photo taken from the southwest location, facing North on January 3, 2018. Since the October inspection, it appears the Operator has installed a perimeter ditch along the outer perimeter of the location in conjunction with check dams (rip-rap) and applied a hydromulch to the topsoil stockpile, fill and cut slopes.

Inspection Photos

Location Name: Grynberg Stateline Federal /24-12-65-4 Pad

Location ID: 441995



Sediment discharge (wind erosion) evident from soil particles covering vegetation

Improperly installed Ditch BMP

01.03.2018 12:33

Photo 12. Photo taken from the southeast location, facing West on January 3, 2018. See comments under Photo 9.

Inspection Photos

Location Name: Grynberg Stateline Federal /24-12-65-4 Pad

Location ID: 441995

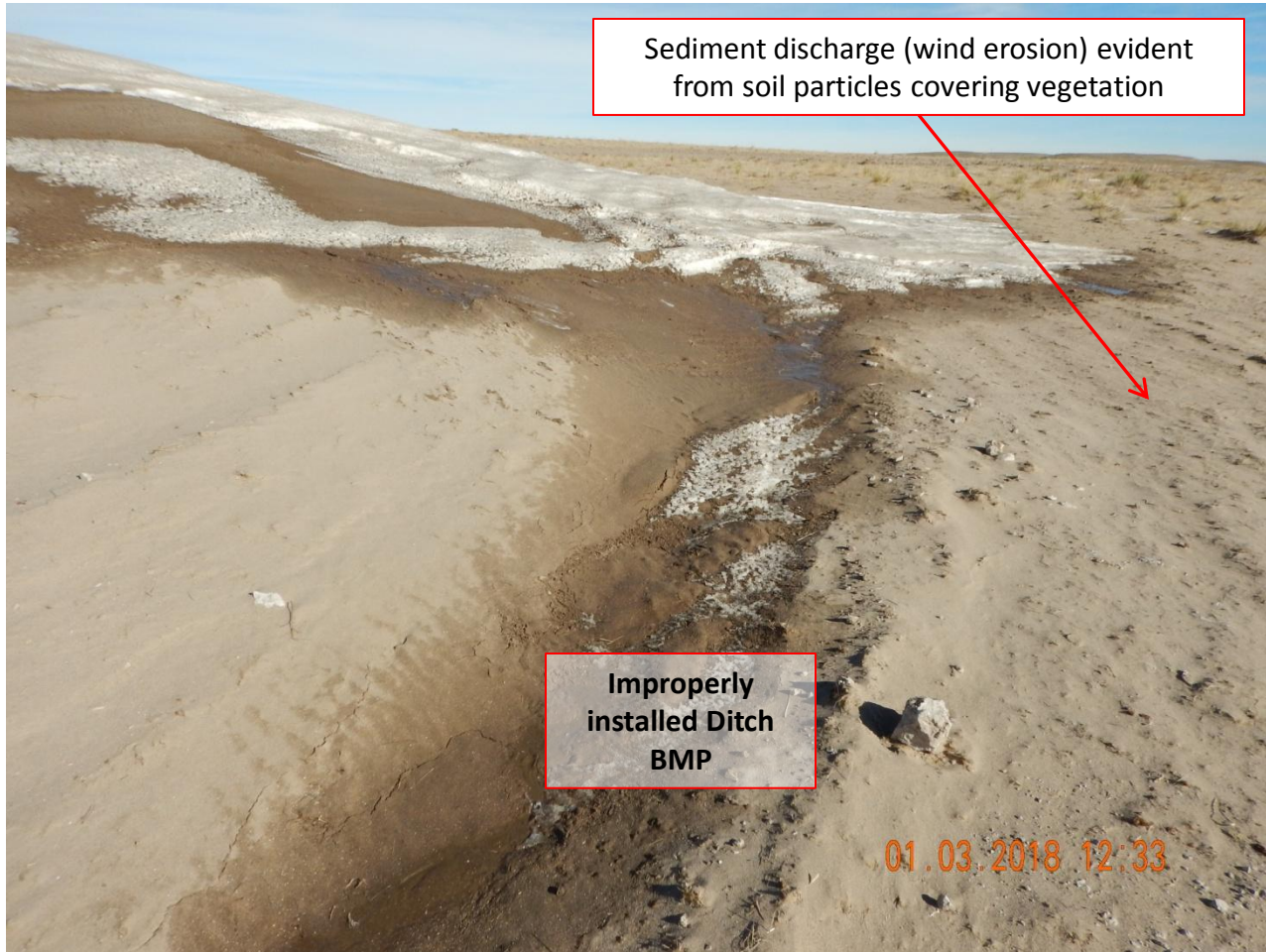


Photo 13. Photo taken from the southeast location, facing North on January 3, 2018. See comments under Photo 9.

Inspection Photos

Location Name: Grynberg Stateline Federal /24-12-65-4 Pad

Location ID: 441995



Photo 14. Photo taken from the eastern location on the fill slope, facing South on October 24, 2017.



Photo 15. Photo taken from the eastern location on the fill slope, facing South on January 3, 2018. See comments under Photo 9.

Inspection Photos

Location Name: Grynberg Stateline Federal /24-12-65-4 Pad

Location ID: 441995



Photo 16. Photo taken from the eastern location on the fill slope, facing Southeast on January 3, 2018. See comments under Photo 9.

Inspection Photos

Location Name: Grynberg Stateline Federal /24-12-65-4 Pad

Location ID: 441995



Photo 17. Photo taken from the east of the access road, facing Northwest on January 3, 2018. See comments under Photo 9.

Inspection Photos

Location Name: Grynberg Stateline Federal /24-12-65-4 Pad

Location ID: 441995



Photo 18. Close-up reference photo taken north of location where there have been no impacts to sediment discharge from the location.



Photo 19. Close-up photo taken east of the location illustrating the evidence of sediment discharge off location.