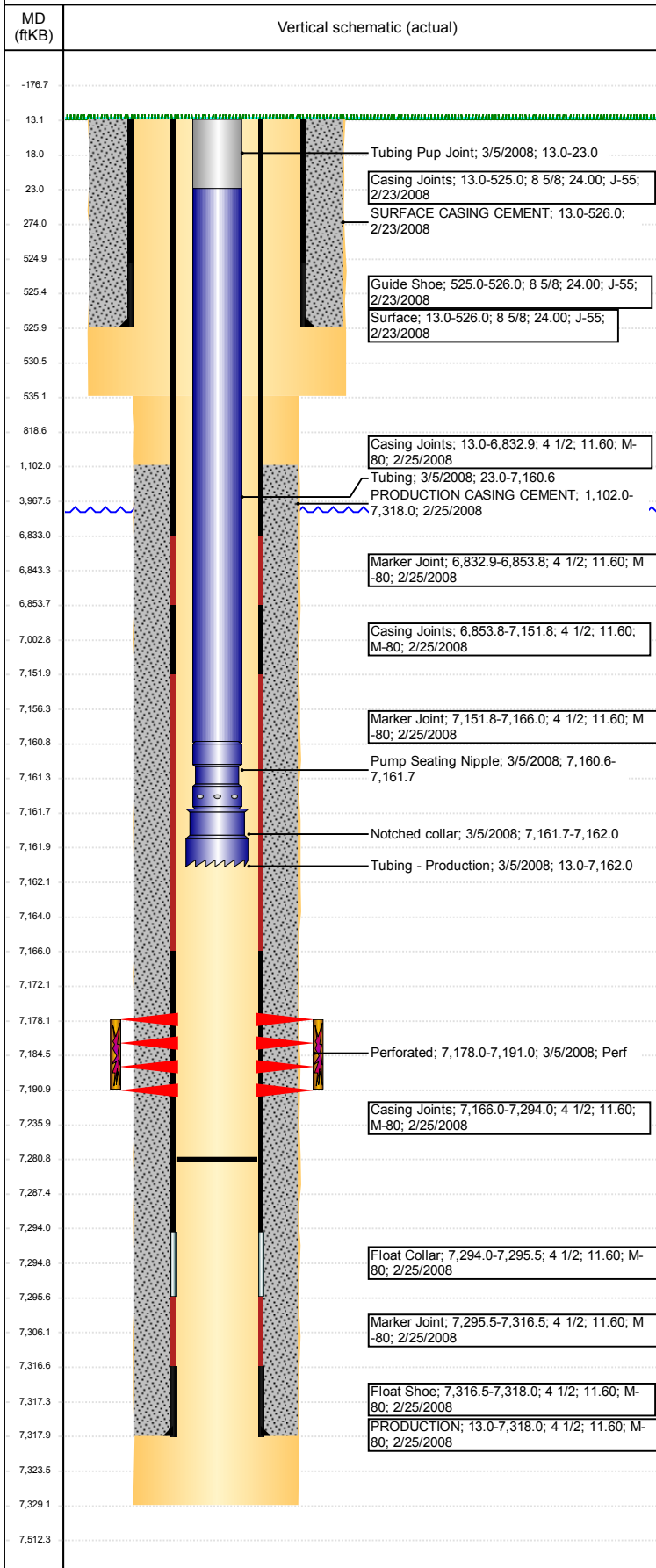


Wellbore Schematic Input Report

Well Name: HERTZKE N01-12

VERTICAL - ORIGINAL HOLE, 1/5/2018 10:06:10 AM



Well Header						
API 05-123-26555	Business Unit DJ BASIN		District 15	Well Config VERTICAL		
Original KB Elevation (ft) 4,931	KB - GL / MSL (ftKB) 13.00		Spud Date 2/22/2008		P & A Date	
Comment						
Directions To Well From the intersection of 95th Ave. & 10th St., go West 4/10ths, then Northwest 4/10ths, then North 1/10th, then West into location						
Congressional Location						
Quarter 3 NW	Quarter 4 SW	Section 1	Township 5	Twntshp N/S Dir N	Range 67	Range E/W Dir W
Bottom Hole Location						
North-South Distance (ft) 2,116.0		From N or S Line FSL		East-West Distance (ft) 619.0		From E or W Line FWL
Plug Back Total Depths						
Date	Depth (ftKB)	Method		Com		
2/25/2008	7,294.0	CASING TALLY				
3/4/2008	7,281.0	CASED HOLE LOG				
Wellbore Sections						
Section Des		Size (in)		Act Top, MD (ftKB)		Act Btm, MD (ftKB)
SURFACE		12 1/4		13		535
PRODUCTION		7 7/8		535		7,329
Zone Statuses						
Zone Name	Status Date	Status	Fluid Type	Job	Prod Method	
CODELL	4/28/2008	PR		DRILLING/CO...		
Casing Strings						
Surface, 526.0ftKB						
Casing Description Surface		Run Date 2/23/2008	OD (in) 8 5/8	Wt/Len (l... 24.00	Grade J-55	Top, MD (ft... 13.0
						MD (ftKB) 526.0
PRODUCTION, 7,318.0ftKB						
Casing Description PRODUCTION		Run Date 2/25/2008	OD (in) 4 1/2	Wt/Len (l... 11.60	Grade M-80	Top, MD (ft... 13.0
						MD (ftKB) 7,318.0
Cement						
Description SURFACE CASING CEMENT				Top Depth (ftKB) 13.0		Bottom Depth (ftKB) 526.0
Description PRODUCTION CASING CEMENT				Top Depth (ftKB) 1,102.0		Bottom Depth (ftKB) 7,318.0
Tubing Strings						
Tubing Description Tubing - Production		Run Date 3/5/2008	String... 2 3/8	ID (in) 2.00	Wt (lb/ft) 4.70	Grade J-55
						Len (ft) 7,148.98
						Set De... 7,161.8
Tubing Components						
Item Des	OD (in)	Wt (lb/ft)	Grade	Jts	Len (ft)	Btm (ftKB)
Tubing Pup Joint	2 3/8	4.70	J-55	1	10.00	23.0
Tubing	2 3/8	4.70	J-55	230	7,137.58	7,160.6
Pump Seating Nipple	2 3/8			1	1.10	7,161.7
Notched collar	3 1/16			1	0.30	7,162.0
						7,161.5
						7,161.8
Other In Hole						
Run Date	Des			OD (in)	Top (ftKB)	Btm (ftKB)
Logs						
Date	Type				Top, MD (ftKB)	Btm, MD (ftKB)
2/25/2008	Caliper/Comp.Density/Neutron/GR/SP /ML				2,450.0	7,307.0
2/25/2008	DIL/GR/SP/Caliper				517.0	7,327.0
3/4/2008	CBL/CCL/GR				990.0	7,281.0
Perforation Data						
Linked Zone		Bnch/St g	Sum of Entered Shot Total	Top (ftKB)	Btm (ftKB)	Date
CODELL, ORIGINAL HOLE			52	7,178.00	7,191.00	3/5/2008
Total (Sum)			52			

Well Name: HERTZKE N01-12

VERTICAL - ORIGINAL HOLE, 1/5/2018 10:06:10 AM

Stimulation Intervals

Start Date 3/13/2008	Primary Job Type DRILLING/COMPLETION - ORIGINAL	
Technical Result Success	Tech Result Details According to Plan	Tech Result Note
<p>Comment</p> <p>PRE JOB ISIP = 2534 PSI, 5-MIN ISIP = 1985 PSI. STEP RATE TEST: 10 OF 52 PERFS OPEN, NWB FRICTION = 535 PSI, PERF FRICTION = 257 PSI, 5-MIN LEAKOFF = 579 PSI. LOST PUMP W/CRACKED POD IN THE 1.0 PPG SAND STAGE. TREATMENT EXHIBITED A POSITIVE PRESSURE RESPONSE THROUGHOUT THE SAND LADEN STAGES (AVG NOLTE = 0.11). POST JOB ISIP = 3729 PSI, 5-MIN ISIP = 3589 PSI. TURN ON ON 14/64 CHOKE WITH 3250 PSI IN 30 MINUTES</p>		

