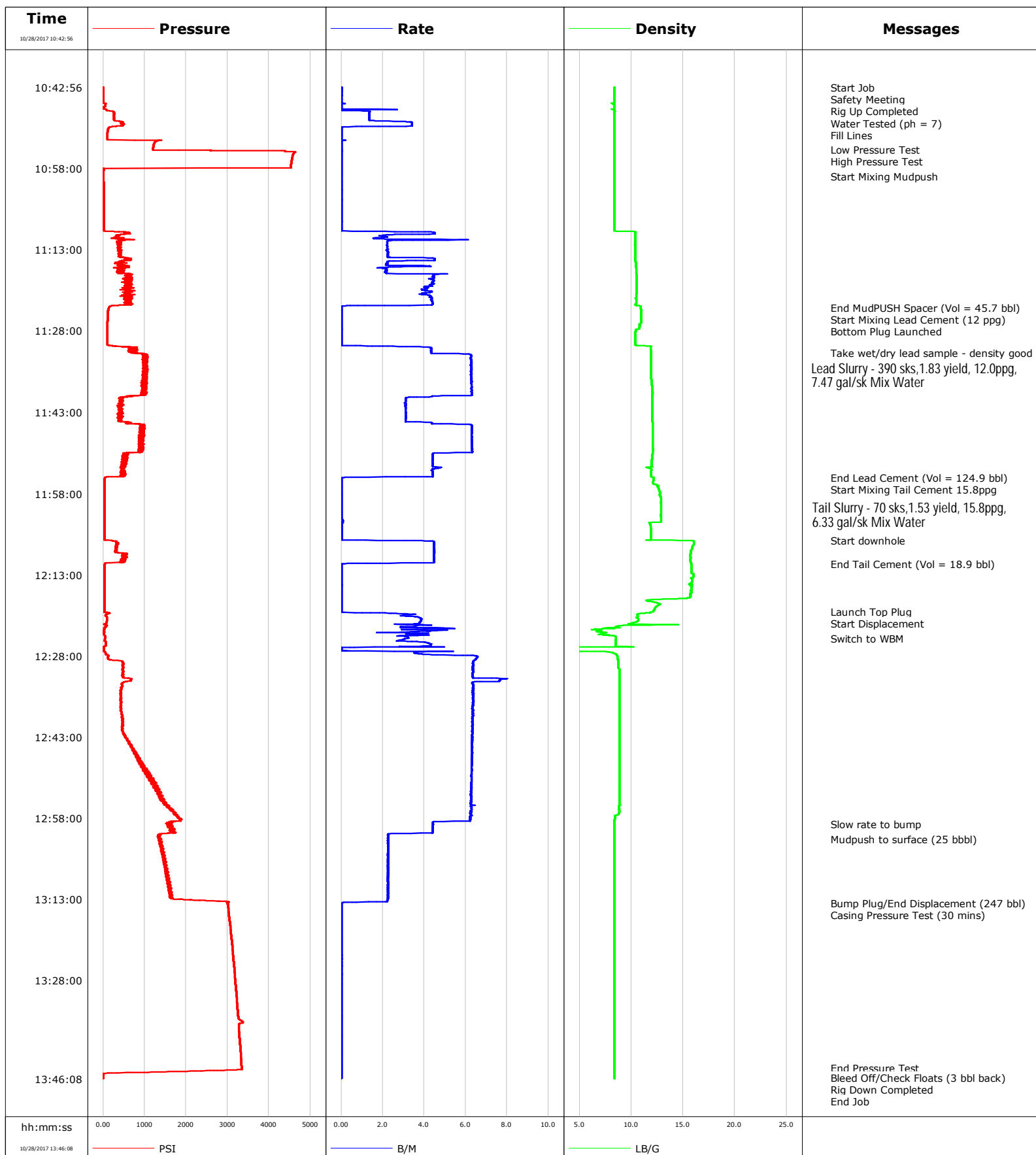


<b>Well</b>	Meguire #2	<b>Client</b>	Anadarko
<b>Field</b>		<b>SIR No.</b>	D5VO-02192
<b>Engineer</b>	Cameron McNutt	<b>Job Type</b>	Intermediate
<b>Country</b>	United States	<b>Job Date</b>	10-28-2017



# Cementing Service Report

				Customer Anadarko			Job Number D5VO-02192						
Well Meguire #2			Location (legal)			Schlumberger Location Cheyenne			Job Start Oct/28/2017				
Field		Formation Name/Type			Deviation 0 deg		Bit Size 8.8 in		Well MD 6510.0 ft		Well TVD 6039.0 ft		
County		State/Province CO			BHP psi		BHST 204 degF		BHCT 152 degF		Pore Press. Gradient lb/gal		
Well Master 0631738377		API/UWI											
Rig Name PD 461		Drilled For Oil & Gas		Service Via Land		Casing/ Liner							
						Depth, ft		Size, in		Weight, lb/ft		Grade	
Offshore Zone		Well Class New		Well Type Re-entry		2046.0		9.6		36.0			
						6515.0		7.0		26.0		N-80	
Drilling Fluid Type WBM		Max. Density 10.00 lb/gal		Plastic Viscosity cP		Tubing/Drill Pipe							
						T/D		Depth, ft		Size, in		Weight, lb/ft	
Service Line Cementing		Job Type Intermediate											
Max. Allowed Tub. Press psi		Max. Allowed Ann. Press psi		WH Connection Double Cement head		Perforations/Open Hole							
						Top, ft		Bottom, ft		shot/ft		No. of Shots	
						ft		ft					
						ft		ft				Diameter in	
						Treat Down Casing		Displacement 247.6 bbl		Packer Type NA		Packer Depth ft	
						Tubing Vol. bbl		Casing Vol. 249.0 bbl		Annular Vol. bbl		Openhole Vol. bbl	
Casing/Tubing Secured <input type="checkbox"/>		1 Hole Vol. Circulated prior to Cement <input checked="" type="checkbox"/>				Casing Tools				Squeeze Job			
Lift Pressure 4319 psi						Shoe Type Float				Squeeze Type			
Pipe Rotated <input type="checkbox"/>		Pipe Reciprocated <input type="checkbox"/>				Shoe Depth 6515.0 ft				Tool Type			
No. Centralizers		Top Plugs 1		Bottom Plugs 1		Stage Tool Type NA				Tool Depth ft			
Cement Head Type Double						Stage Tool Depth ft				Tail Pipe Size in			
Job Scheduled For Oct/28/2017 04:00		Arrived on Location Oct/28/2017 04:00		Leave Location Oct/28/2017		Collar Type Float				Tail Pipe Depth ft			
						Collar Depth 6471.1 ft				Sqz. Total Vol. bbl			
Date	Time 24-hr clock	Treating Pressure PSI	Flow Rate B/M	Density LB/G	Volume BBL	Message							
10/28/2017	10:42:56	9	0.0	8.38	0.0	Started Acquisition							
10/28/2017	10:42:59	9	0.0	8.38	0.0	Start Job							
10/28/2017	10:43:03	9	0.0	8.38	0.0	Safety Meeting							
10/28/2017	10:43:04	9	0.0	8.38	0.0	Rig Up Completed							
10/28/2017	10:43:11	9	0.0	8.38	0.0	Water Tested (ph = 7)							
10/28/2017	10:43:15	9	0.0	8.38	0.0	Fill Lines							
10/28/2017	10:54:32	1201	0.0	8.37	6.3	Low Pressure Test							
10/28/2017	10:55:16	4587	0.0	8.37	6.3	High Pressure Test							
10/28/2017	10:59:26	11	0.0	8.37	6.3	Start Mixing Mudpush							
10/28/2017	11:23:40	137	0.0	10.92	45.7	End MudPUSH Spacer (Vol = 45.7 bbl)							
10/28/2017	11:23:51	129	0.0	10.93	45.7	Start Mixing Lead Cement (12 ppg)							
10/28/2017	11:25:47	109	0.0	10.94	45.8	Bottom Plug Launched							
10/28/2017	11:32:01	704	4.3	11.90	51.0	Take wet/dry lead sample - density good							
10/28/2017	11:55:00	60	0.8	12.13	170.6	End Lead Cement (Vol = 124.9 bbl)							
10/28/2017	11:56:25	31	0.0	12.43	170.7	Start Mixing Tail Cement 15.8ppg							
10/28/2017	12:06:35	30	0.0	11.90	170.8	Start downhole							
10/28/2017	12:11:03	38	0.0	15.79	189.6	End Tail Cement (Vol = 18.9 bbl)							
10/28/2017	12:19:45	30	0.0	12.13	189.6	Launch Top Plug							
10/28/2017	12:20:00	110	0.0	11.85	189.6	Start Displacement							
10/28/2017	12:24:48	45	3.2	8.51	206.4	Switch to WBM							
10/28/2017	12:59:06	1561	4.4	8.39	412.3	Slow rate to bump							

Well			Field		Job Start		Customer		Job Number	
Meguire #2					Oct/28/2017		Anadarko		D5VO-02192	
Date	Time 24-hr clock	Treating Pressure PSI	Flow Rate B/M	Density LB/G	Volume BBL	Message				
10/28/2017	13:13:46	3001	0.0	8.37	448.4	Bump Plug/End Displacement (247 bbl)				
10/28/2017	13:13:47	2998	0.0	8.37	448.4	Casing Pressure Test (30 mins)				
10/28/2017	13:44:06	3340	0.0	8.38	448.6	End Pressure Test				
10/28/2017	13:45:57	11	0.0	8.37	448.6	Bleed Off/Check Floats (3 bbl back)				
10/28/2017	13:46:01	11	0.0	8.37	448.6	Rig Down Completed				

### Post Job Summary

Average Pump Rates, bbl/min					Volume of Fluid Injected, bbl					
Slurry 3.3	N2	Mud	Maximum Rate 8.0	Total Slurry 455.0	Mud 0.0	Spacer 0.0	N2			
Treating Pressure Summary, psi					Breakdown Fluid					
Maximum 4640	Final 11	Average 1067	Bump Plug to 2500	Breakdown	Type	Volume bbl	Density lb/gal			
Avg. N2 Percent %	Designed Slurry Volume 142.8 bbl	Displacement 0.0 bbl	Mix Water Temp 60 degF	Cement Circulated to Surface? <input type="checkbox"/>		Volume bbl				
				Washed Thru Perfs <input type="checkbox"/>		To ft				
Customer or Authorized Representative			Schlumberger Supervisor Cameron McNutt		Circulation Lost <input type="checkbox"/>	Job Completed <input checked="" type="checkbox"/>				
					-	-				