

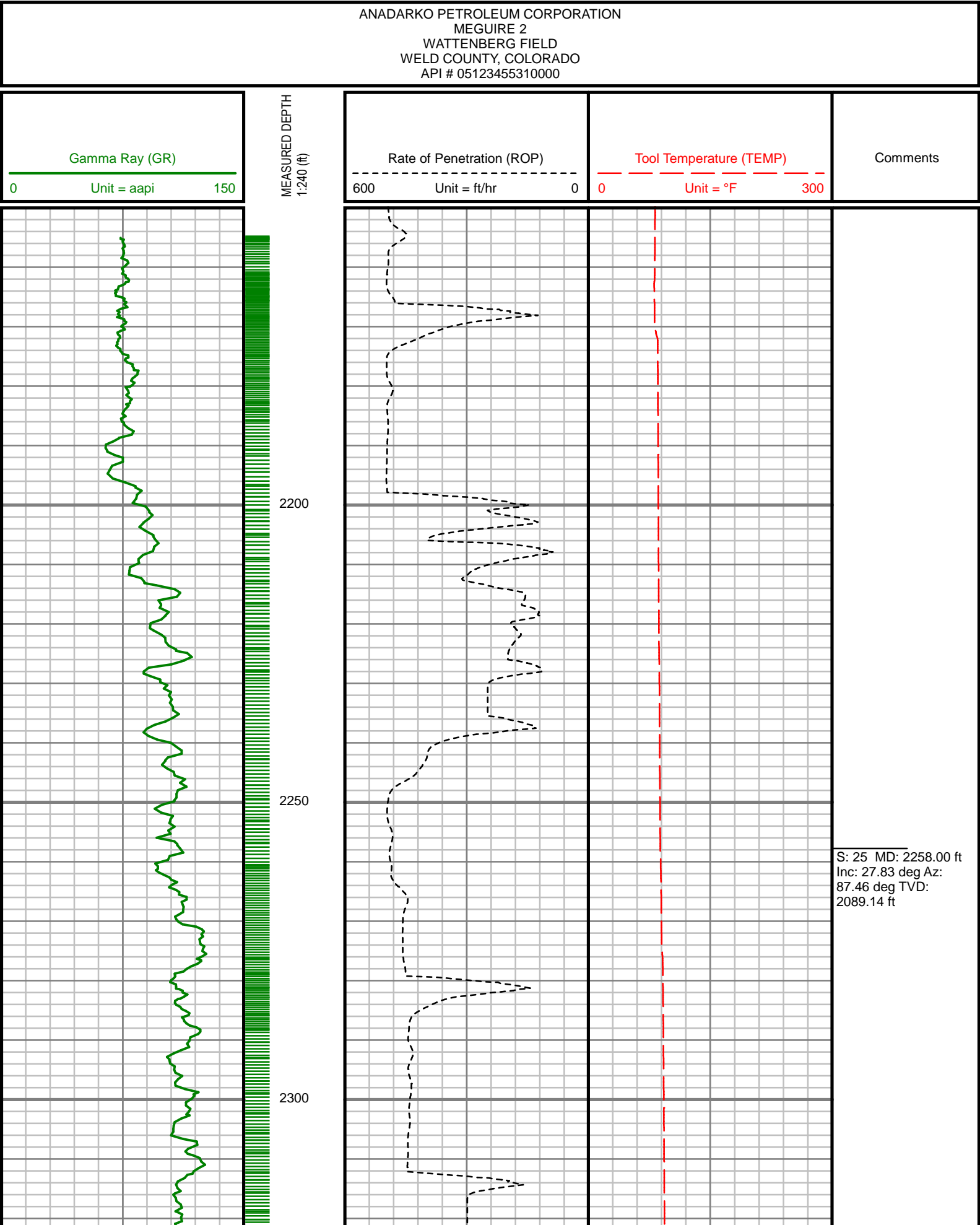
5" = 100' MD

COMPANY : ANADARKO PETROLEUM CORPORATION WELL : MEGUIRE 2 FIELD : WATTENBERG COUNTY : WELD STATE : COLORADO COUNTRY : U.S.A UWI : 05123455310000				COMPANY : ANADARKO PETROLEUM CORPORATION WELL : MEGUIRE 2 FIELD : WATTENBERG COUNTY : WELD STATE : COLORADO COUNTRY : U.S.A UWI : 05123455310000			
DEPTH REF. : RKB REF. HEIGHT : 20.000 ft GROUND LEVEL : 4896.300 ft				WELL LOCATION LAT:40.1247330°N LONG:104.6767370°W N:14572318.57 ft E:1730781.92 ft SEC:21 TWP:2N RANGE:65W			
BOREHOLE RECORD HOLE SIZE in FROM ft TO ft 13.5 0 2207 8.5 2207 6520 2 - 4 5607 6520				OTHER SERVICES NAD83 GYRO DIRECTIONAL ROP			
DEVIATION RECORD INCLINATION deg FROM ft TO ft 0 - 30 0 1545 30 - 2 1545 5607 2 - 4 5607 6520				CASING RECORD CASING SIZE in FROM ft TO ft 9.625 0 2196 7 0 6510			

Run Data						
RUN NUMBER	1	2	3	4		
START DATE	10/15/2017	10/17/2017	10/22/2017	10/26/2017		
START TIME	21:00	23:30	18:00	23:30		
END DATE	10/16/2017	10/22/2017	10/26/2017	10/27/2017		
END TIME	16:30	17:15	19:00	17:00		
DEPTH IN (ft)	100	2207	5712	6455		
DEPTH OUT (ft)	2207	5712	6455	6520		
LOG TOP (ft)	-	2207	5654	6403		
LOG BOTTOM (ft)	-	5654	6403	6468		
HOLE SIZE (in)	13.5	8.5	8.5	8.5		
MUD DATA @ (ft)	2207	5712	6455	6520		
MUD TYPE	WATER-BASED	OIL-BASED	OIL-BASED	OIL-BASED		
DENSITY (lb / gal)	9.3	10.1	10.2	9.9		
VISCOSITY (s / qt)	38	65	65	65		
pH	7.1	-	-	-		
FLUID LOSS (cm3 / 30)	-	-	-	-		
SALINITY (ppm)	-	-	-	-		
Rm (ohmm @ deg F)	-	-	-	-		
Rmf (ohmm @ deg F)	-	-	-	-		
MAX TEMP (deg F)	97	148	148	136		
Rm @ MAX TEMP (ohmm)	-	-	-	-		
LWD ENGINEER #1	M. SMITH	M. SMITH	M. SMITH	M. SMITH		
LWD ENGINEER #2	L. SHAFFER	L. SHAFFER	L. SHAFFER	L. SHAFFER		
LWD ENGINEER #3	G. SAKOU	G. SAKOU	G. SAKOU	G. SAKOU		
LOG WITNESS #1	-	-	-	-		
LOG WITNESS #2	-	-	-	-		



All interpretations are opinions based on inferences from electrical or other measurements and we cannot, and do not guarantee the accuracy or correctness of any interpretations, and we shall not, except in the case of gross or willful negligence on our part, be liable or responsible for any loss, costs, damages or expenses incurred or sustained by anyone resulting from any interpretation made by any of our officers, agents or employees. These interpretations are also subject to our general terms and conditions as set out in our current price schedule.



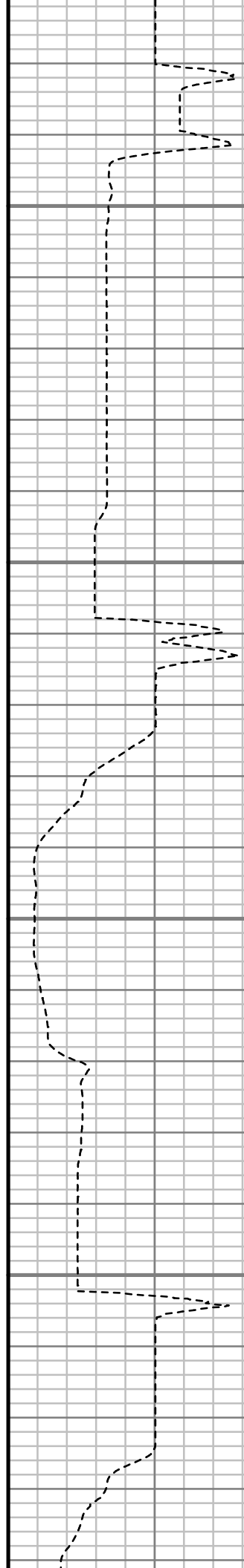


2350

2400

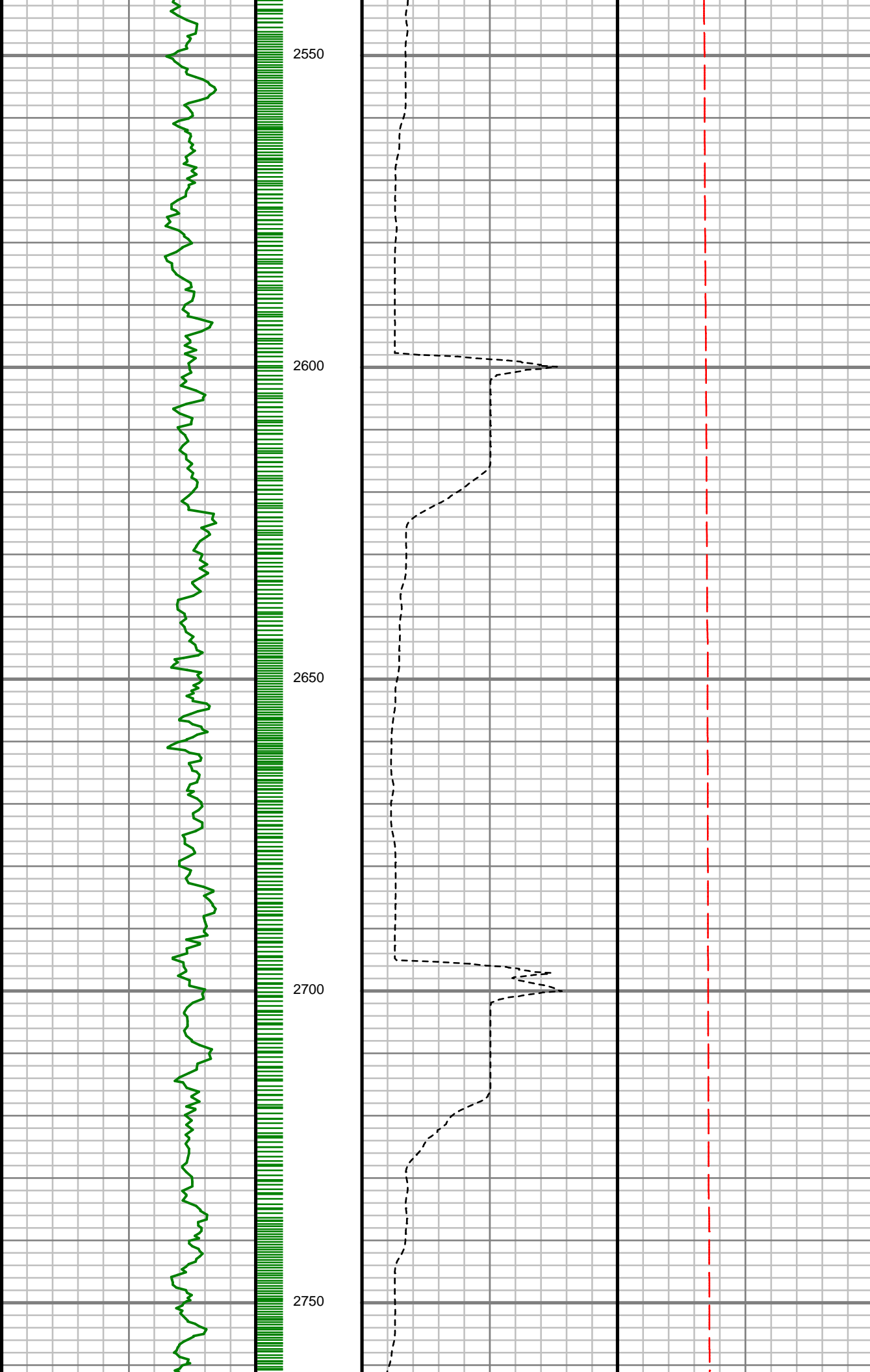
2450

2500



S: 26 MD: 2352.00 ft  
Inc: 28.74 deg Az:  
85.90 deg TVD:  
2171.91 ft

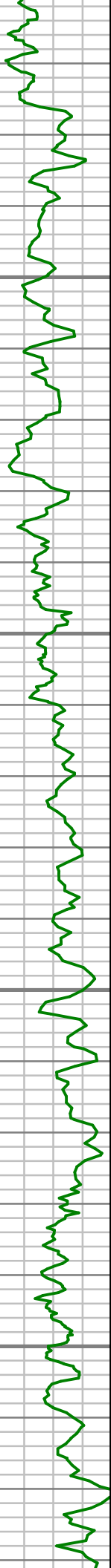
S: 27 MD: 2447.00 ft  
Inc: 28.46 deg Az:  
85.92 deg TVD:  
2255.32 ft



S: 28 MD: 2543.00 ft  
Inc: 28.42 deg Az:  
86.23 deg TVD:  
2339.74 ft

S: 29 MD: 2638.00 ft  
Inc: 28.45 deg Az:  
87.11 deg TVD:  
2423.27 ft

S: 30 MD: 2733.00 ft  
Inc: 28.08 deg Az:  
87.25 deg TVD:  
2506.95 ft



2800

2850

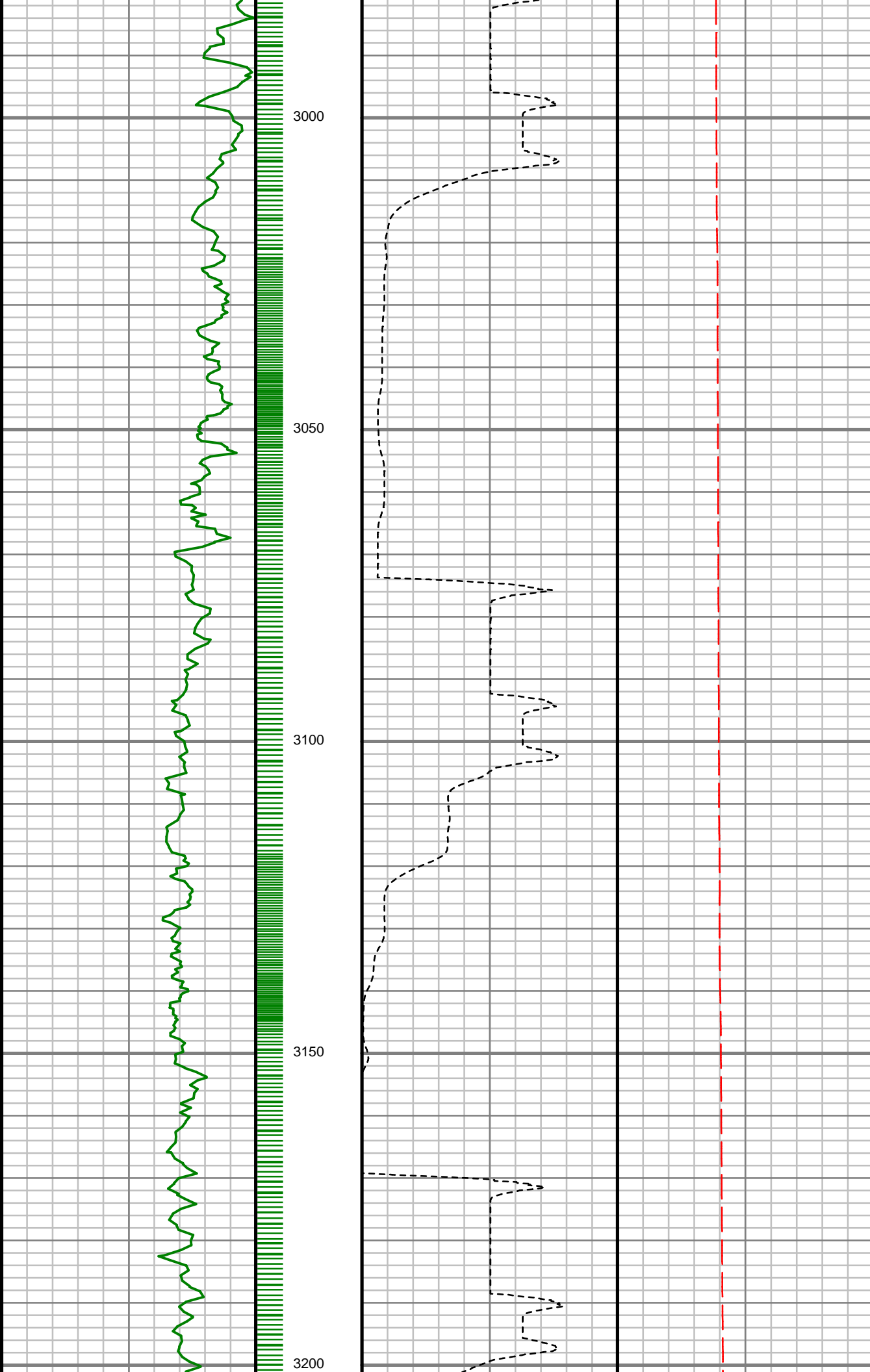
2900

2950



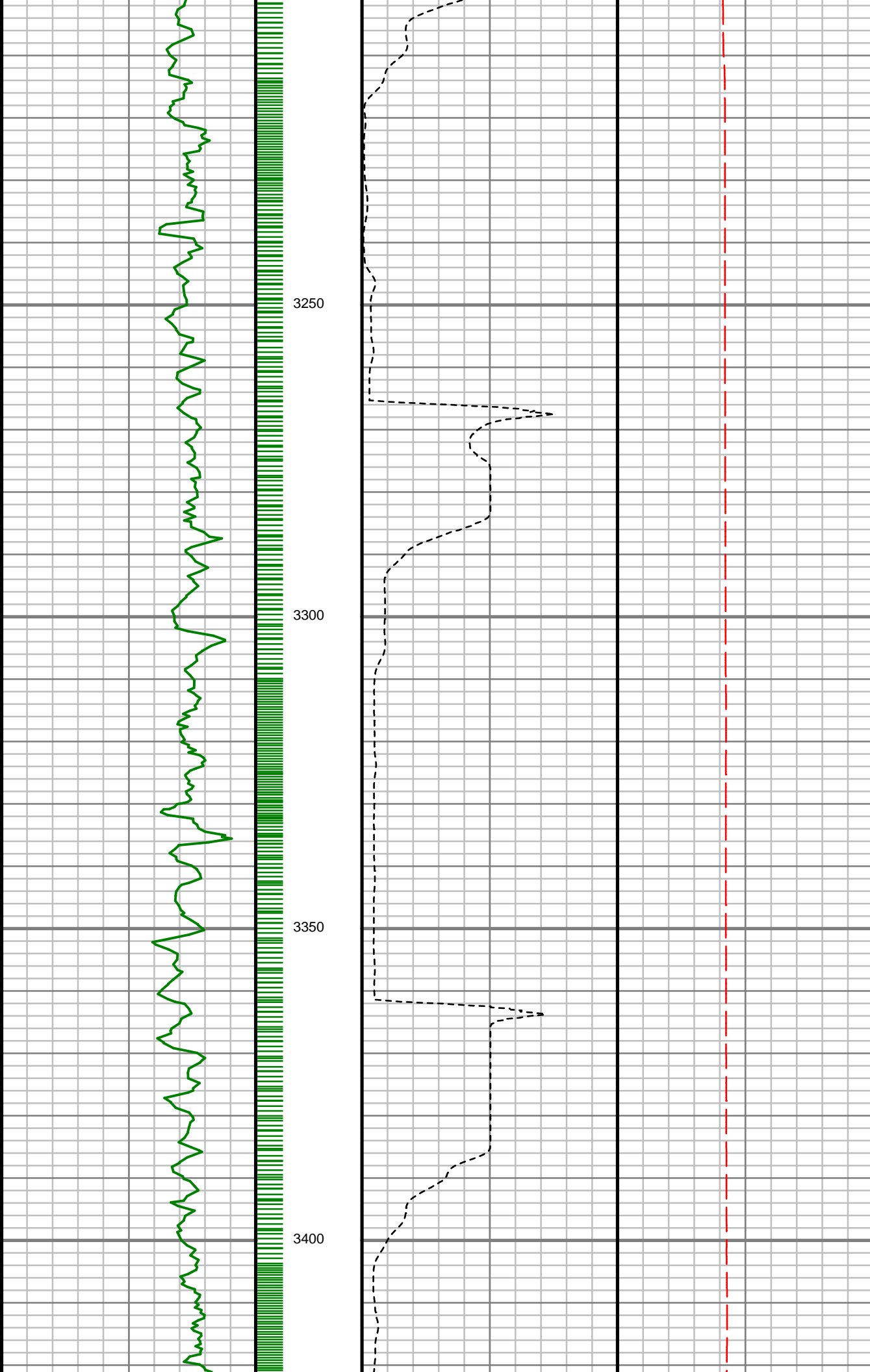
S: 31 MD: 2828.00 ft  
Inc: 27.56 deg Az:  
87.71 deg TVD:  
2590.97 ft

S: 32 MD: 2923.00 ft  
Inc: 27.34 deg Az:  
87.18 deg TVD:  
2675.27 ft



S: 33 MD: 3020.00 ft  
Inc: 27.90 deg Az:  
85.92 deg TVD:  
2761.22 ft

S: 34 MD: 3115.00 ft  
Inc: 28.57 deg Az:  
86.44 deg TVD:  
2844.91 ft

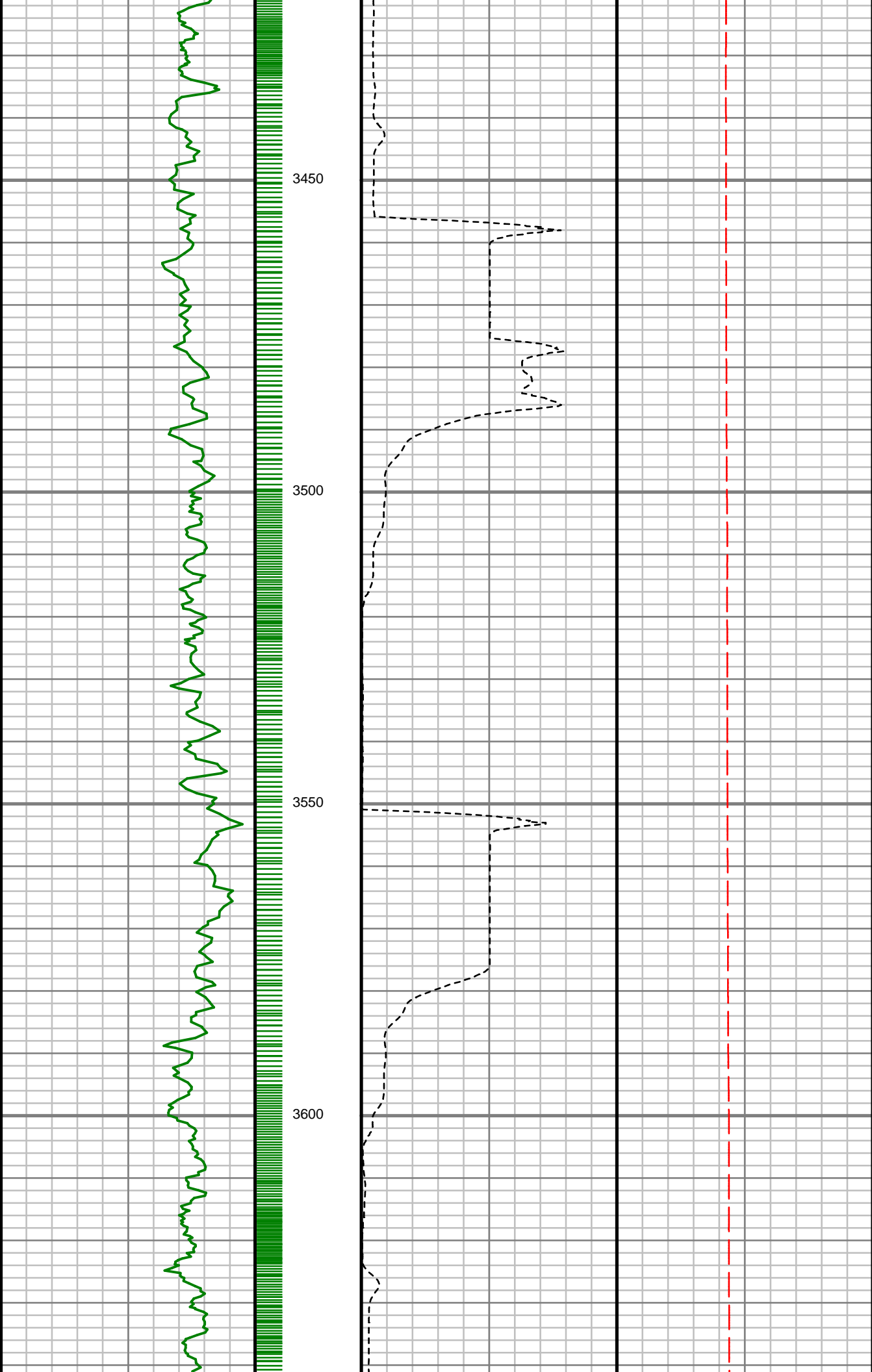


S: 35 MD: 3212.00 ft  
Inc: 29.18 deg Az:  
86.34 deg TVD:  
2929.85 ft

S: 36 MD: 3307.00 ft  
Inc: 29.04 deg Az:  
86.36 deg TVD:  
3012.85 ft

S: 37 MD: 3402.00 ft  
Inc: 29.00 deg Az:  
86.61 deg TVD:  
3095.93 ft





3450

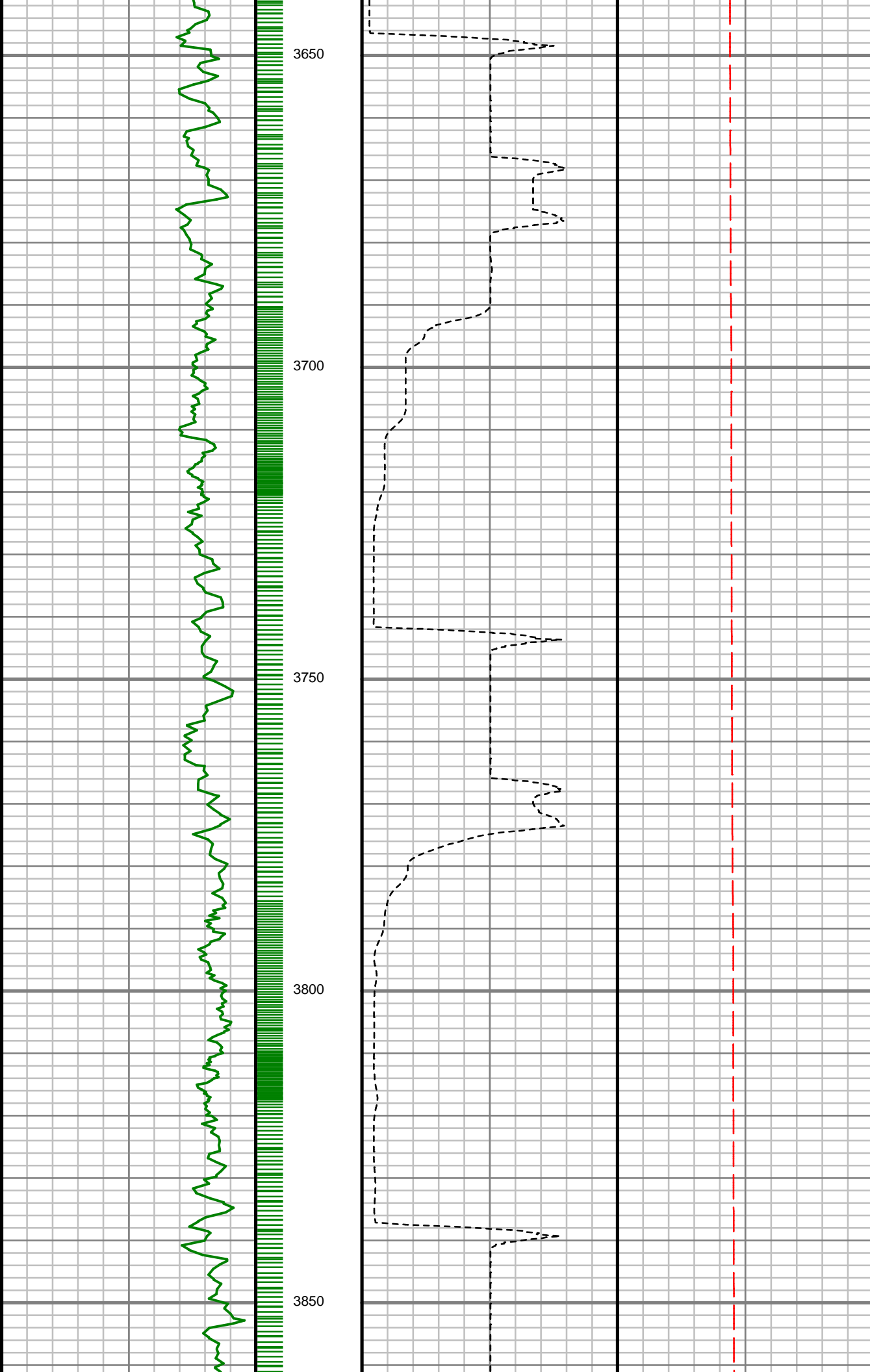
3500

3550

3600

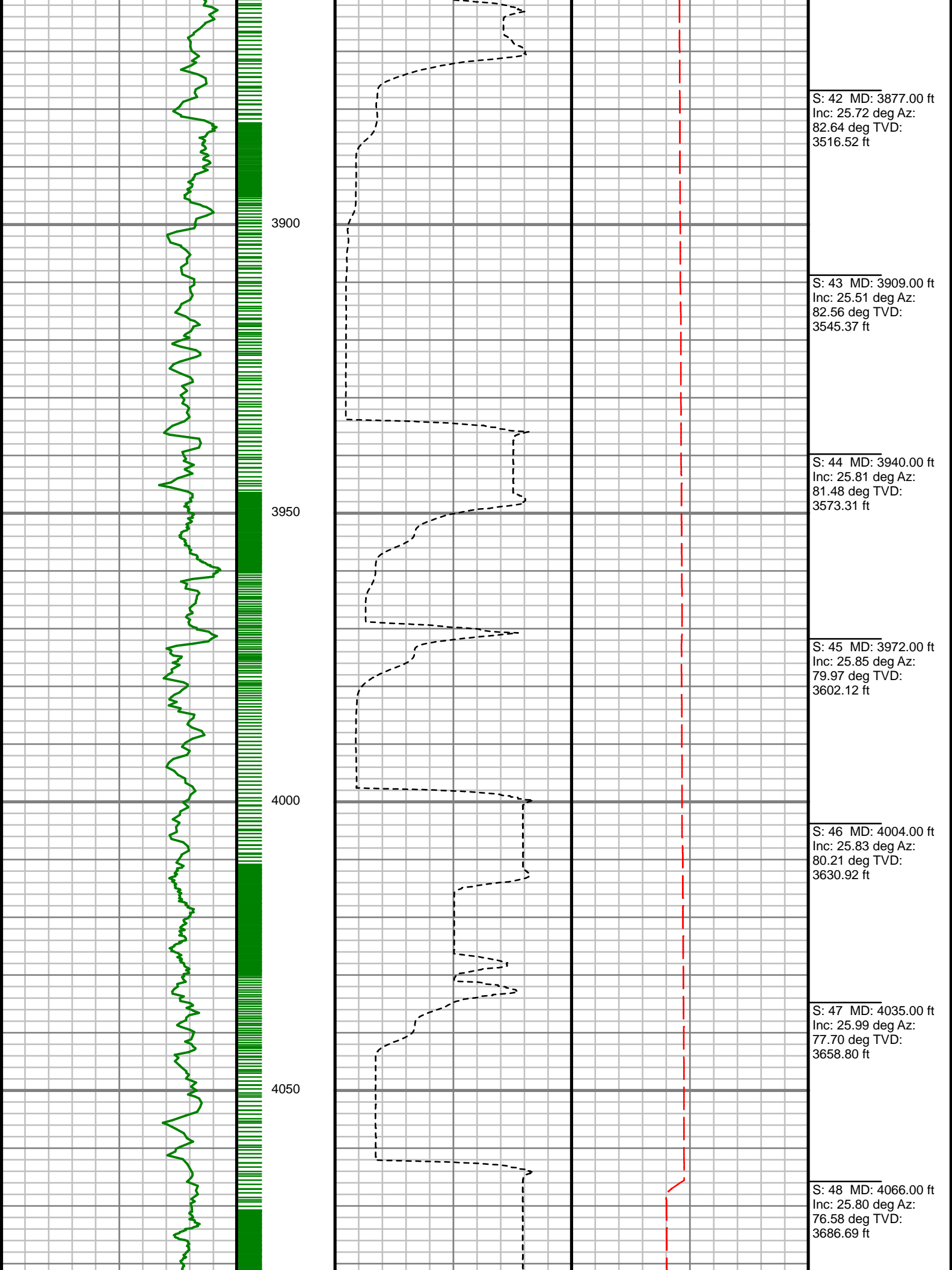
S: 38 MD: 3497.00 ft  
Inc: 28.53 deg Az:  
85.87 deg TVD:  
3179.20 ft

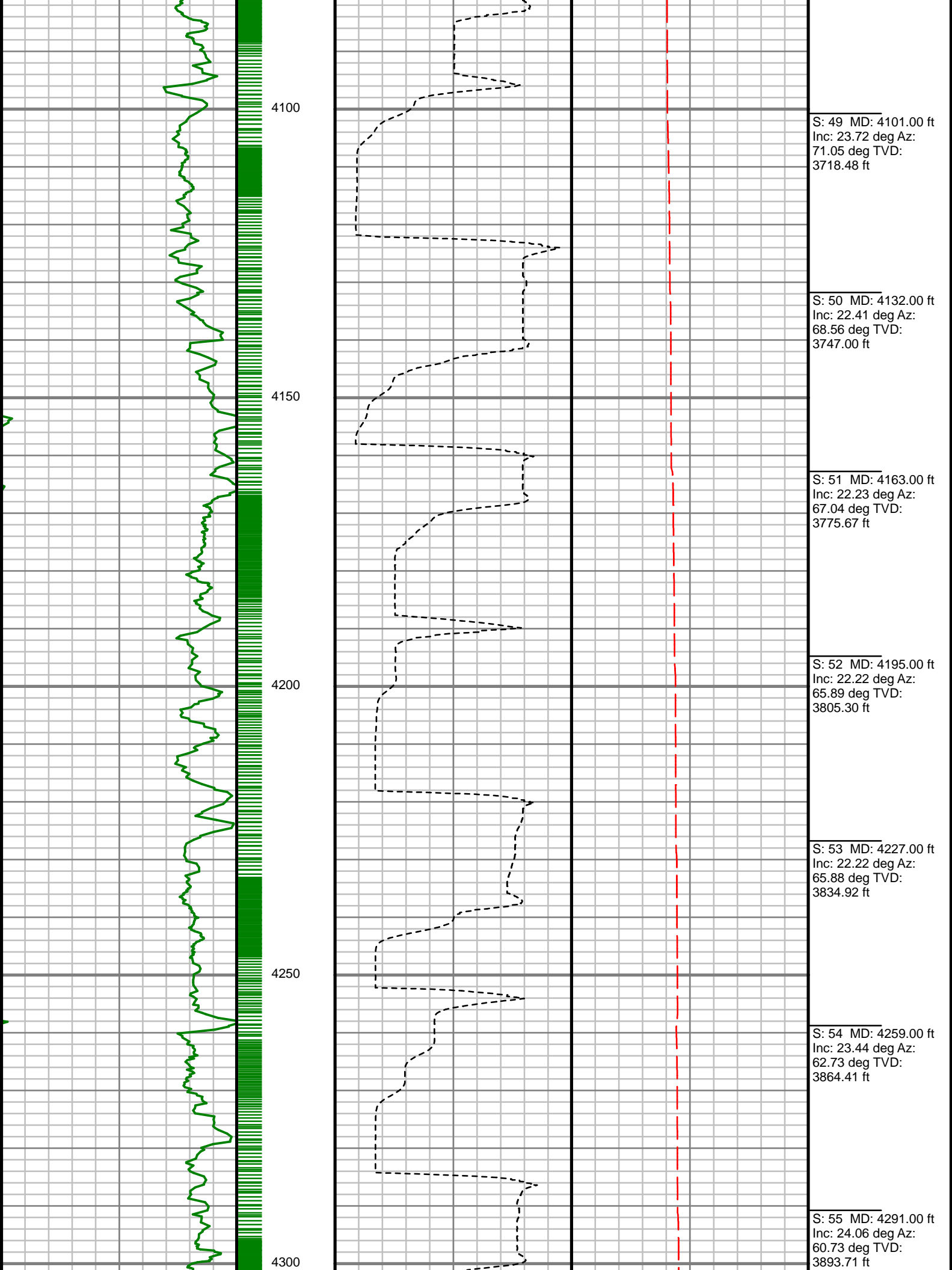
S: 39 MD: 3593.00 ft  
Inc: 27.95 deg Az:  
85.87 deg TVD:  
3263.78 ft

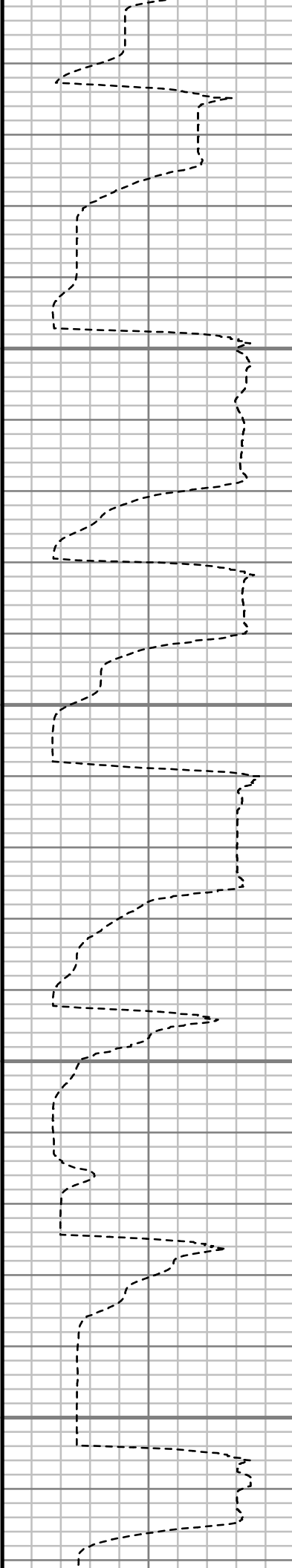
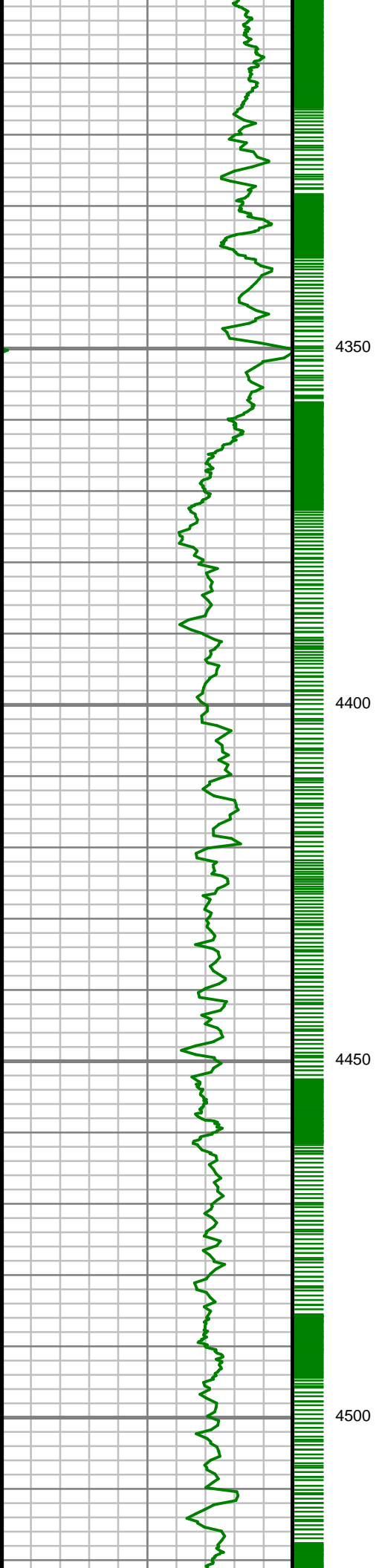


S: 40 MD: 3688.00 ft  
Inc: 27.81 deg Az:  
84.49 deg TVD:  
3347.75 ft

S: 41 MD: 3782.00 ft  
Inc: 26.74 deg Az:  
83.39 deg TVD:  
3431.30 ft







S: 56 MD: 4322.00 ft  
Inc: 24.32 deg Az:  
58.91 deg TVD:  
3921.98 ft

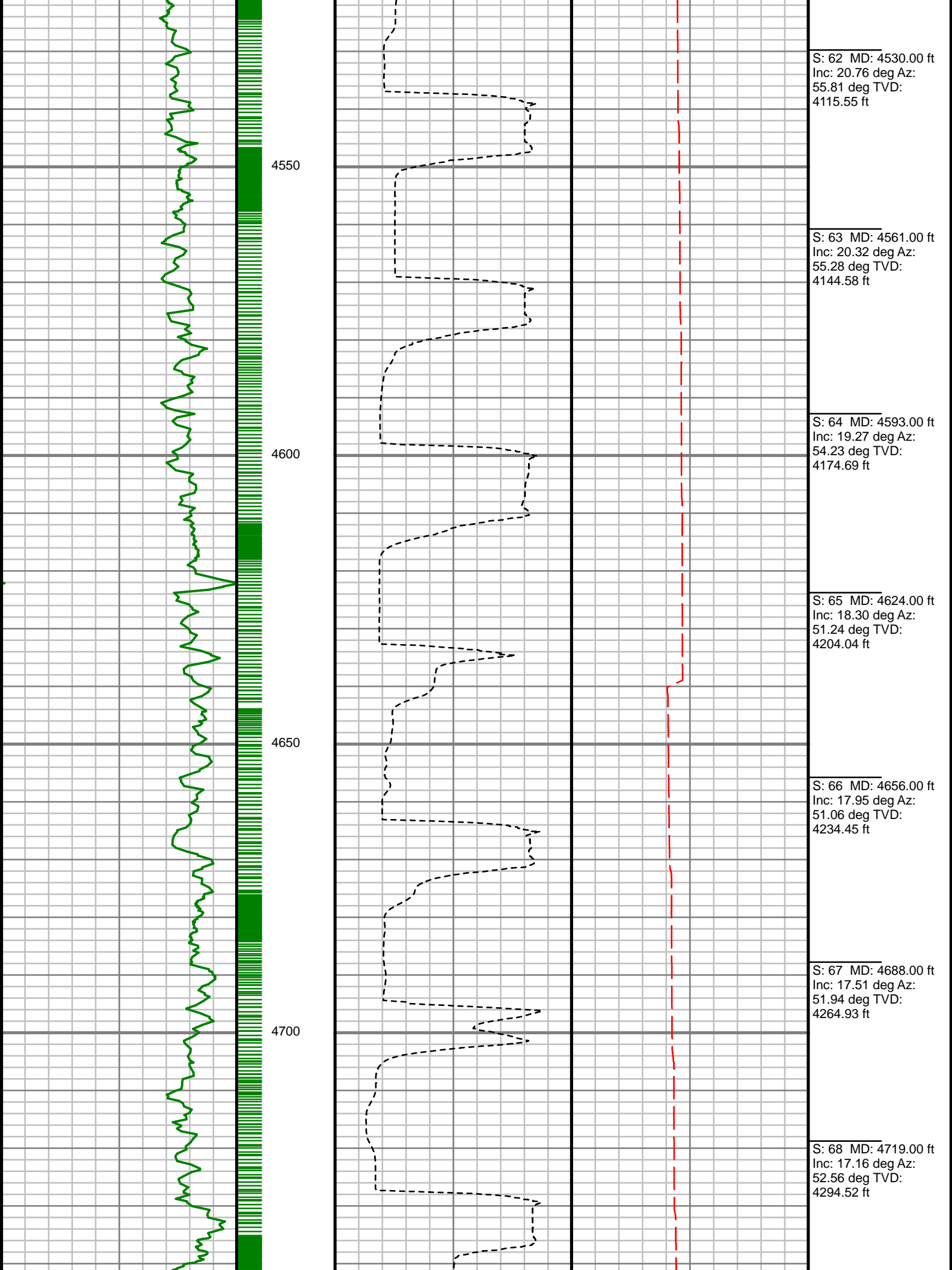
S: 57 MD: 4352.00 ft  
Inc: 23.33 deg Az:  
56.23 deg TVD:  
3949.43 ft

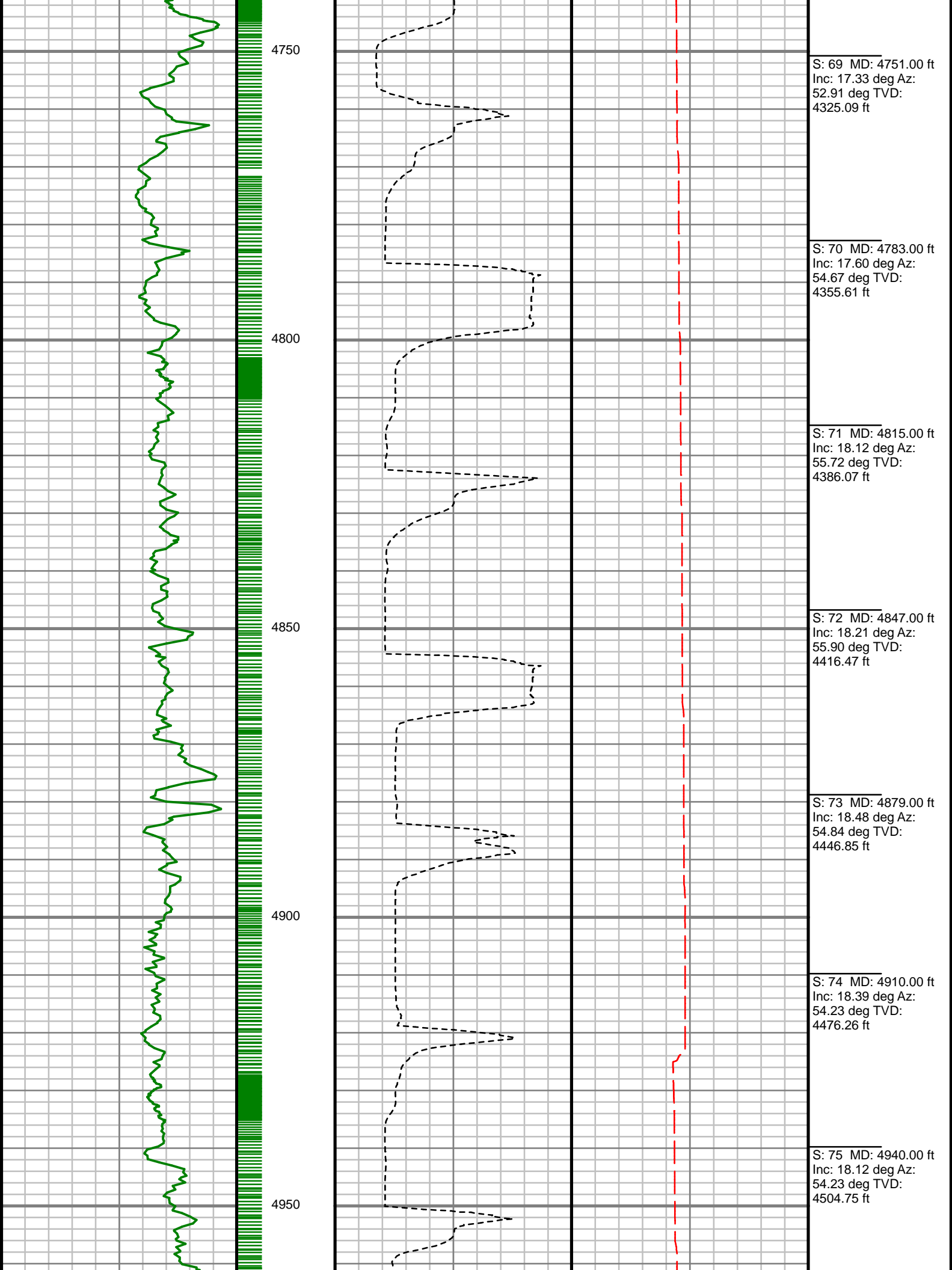
S: 58 MD: 4403.00 ft  
Inc: 21.47 deg Az:  
55.20 deg TVD:  
3996.58 ft

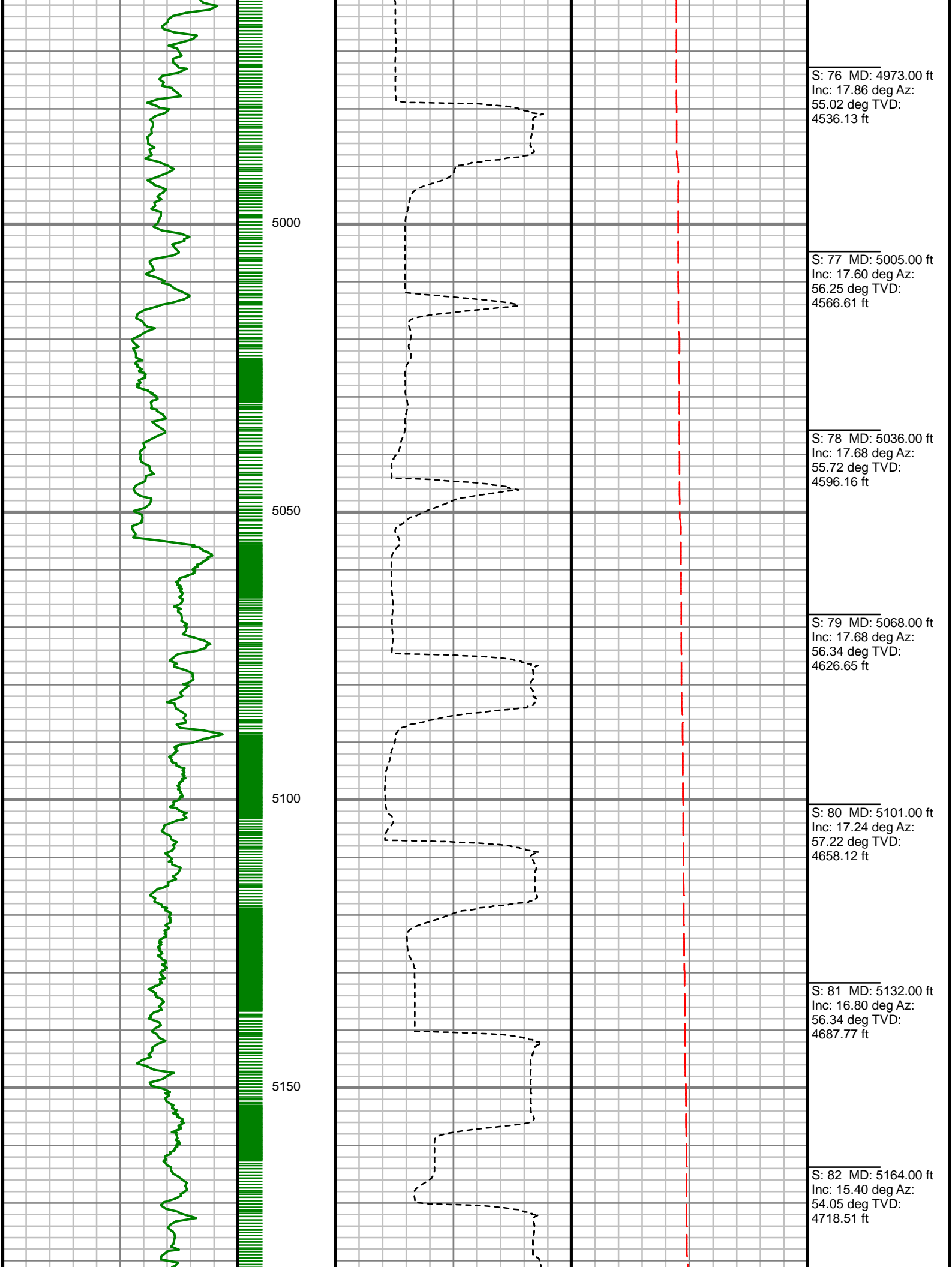
S: 59 MD: 4435.00 ft  
Inc: 20.32 deg Az:  
53.35 deg TVD:  
4026.47 ft

S: 60 MD: 4467.00 ft  
Inc: 20.06 deg Az:  
52.47 deg TVD:  
4056.51 ft

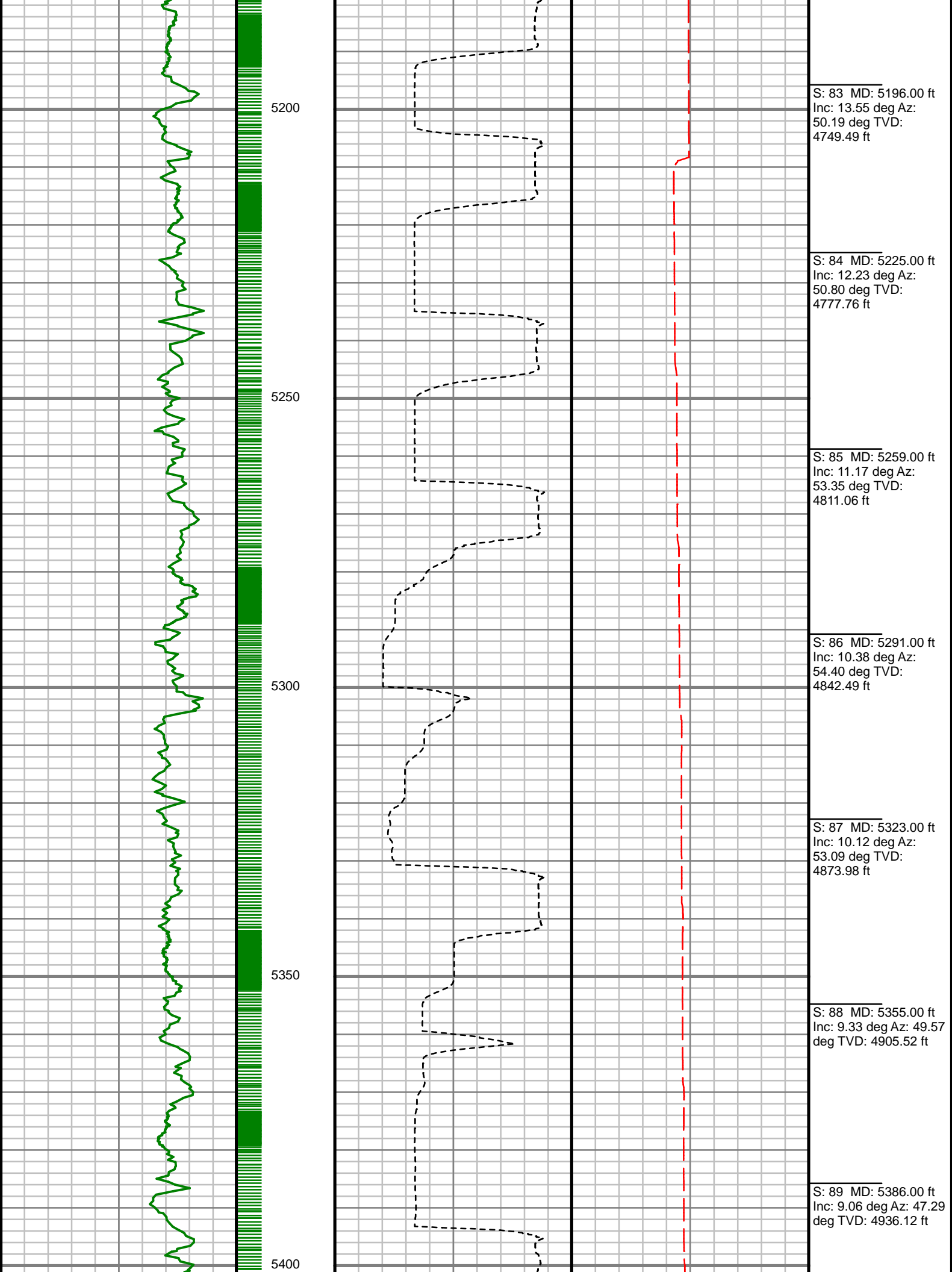
S: 61 MD: 4498.00 ft  
Inc: 20.41 deg Az:  
53.35 deg TVD:  
4085.59 ft

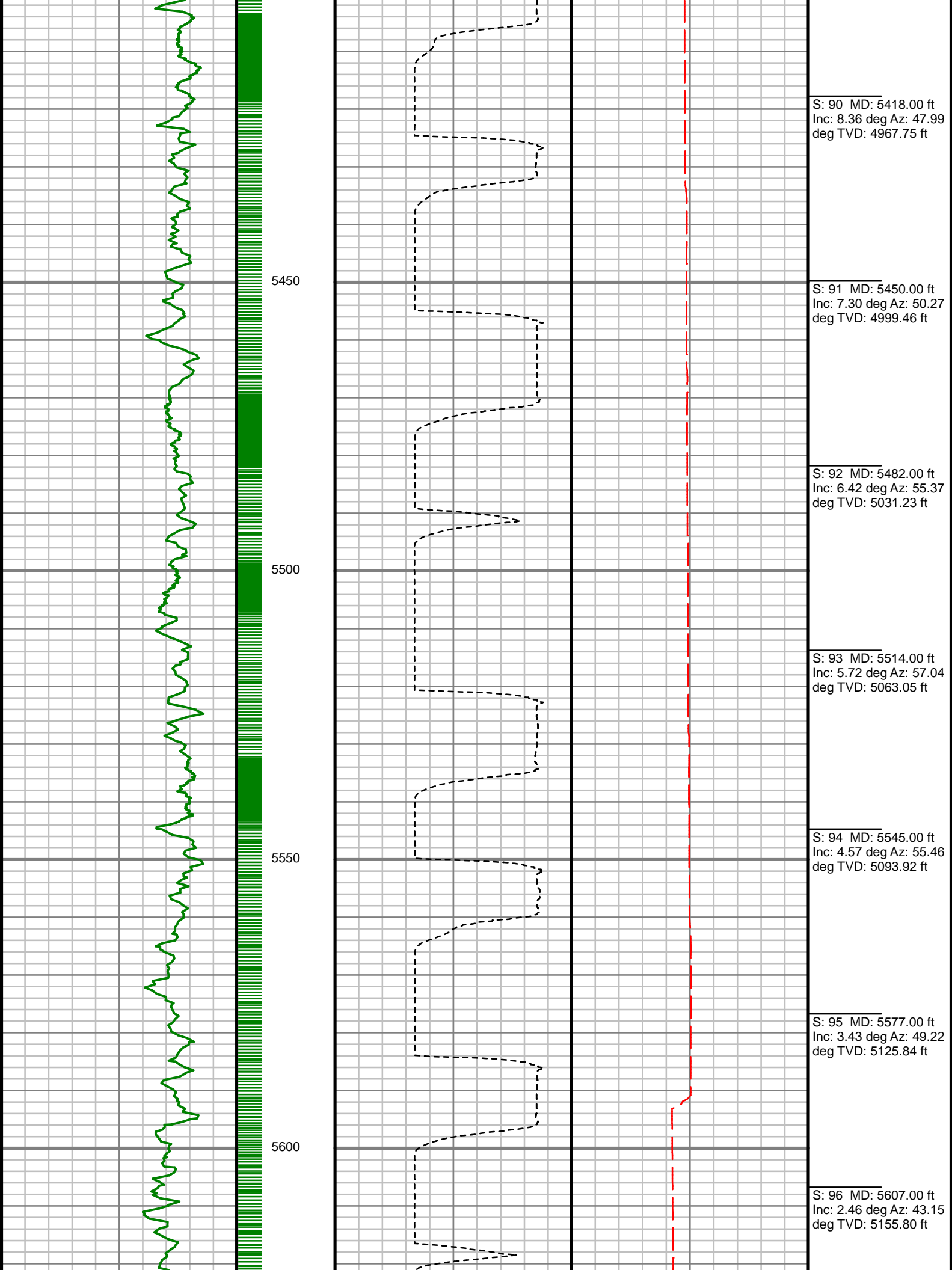


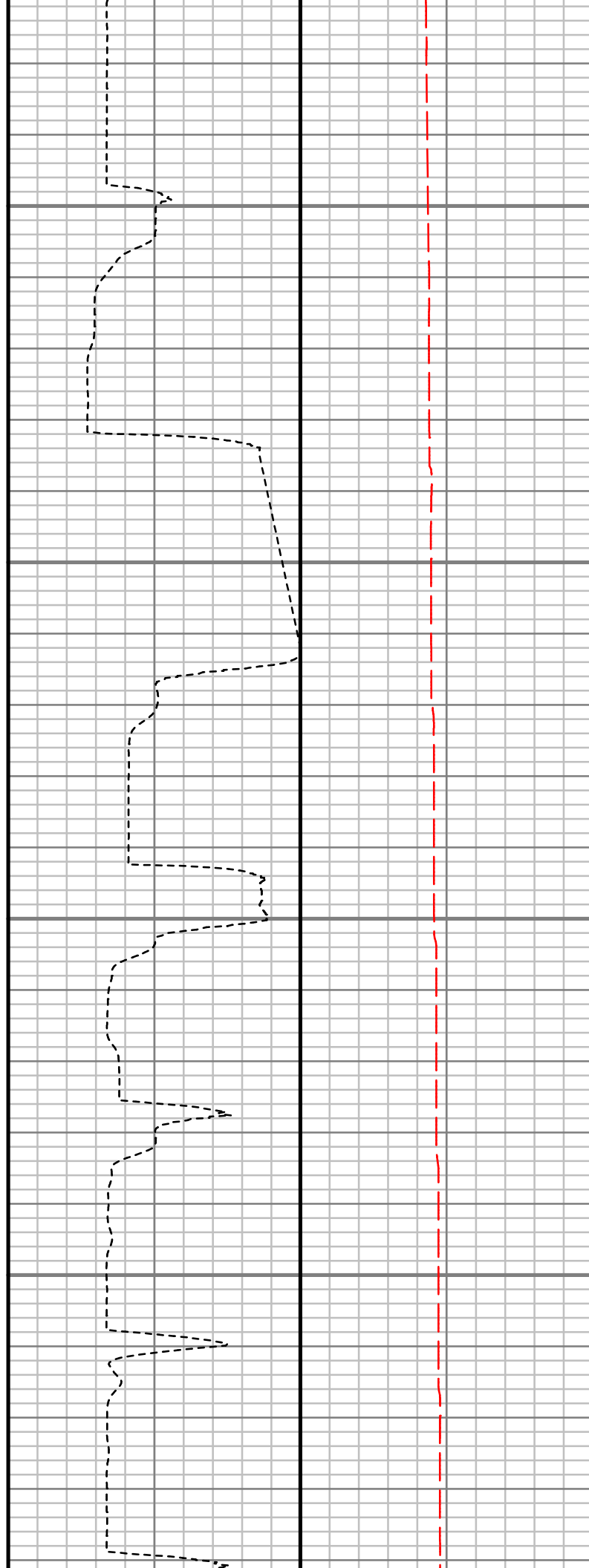
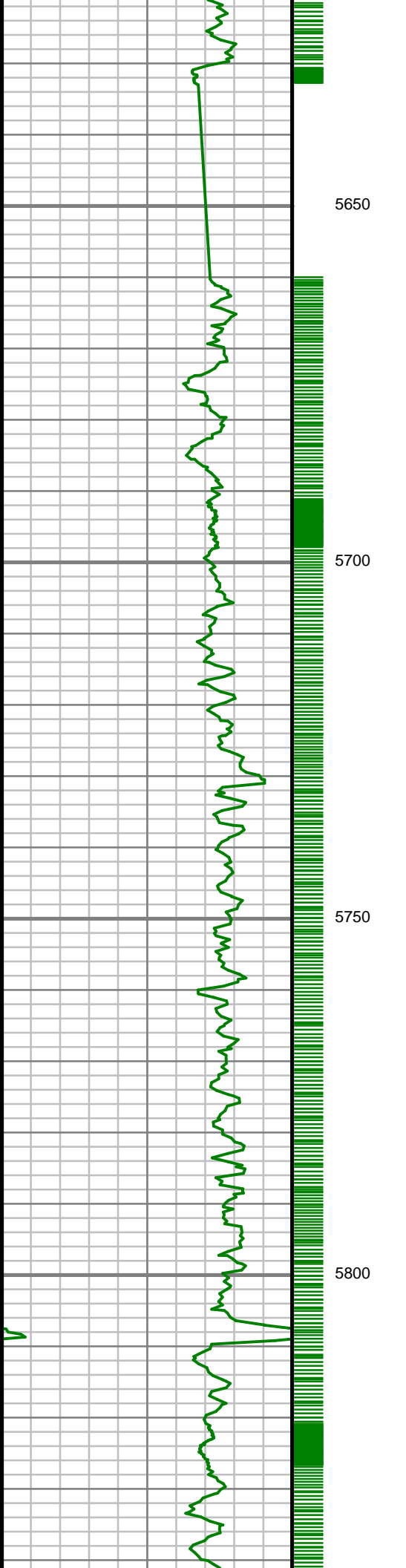












S: 97 MD: 5640.00 ft  
Inc: 2.29 deg Az: 36.47  
deg TVD: 5188.77 ft

S: 98 MD: 5674.00 ft  
Inc: 2.20 deg Az: 35.51  
deg TVD: 5222.75 ft

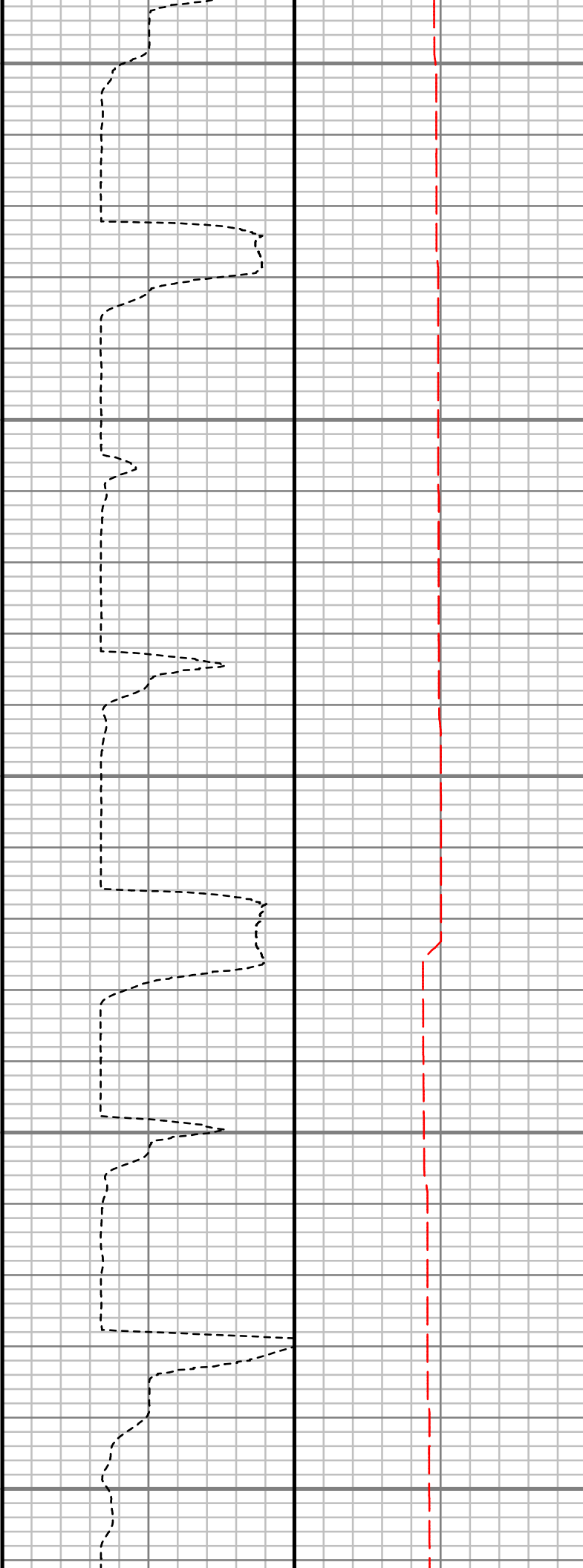
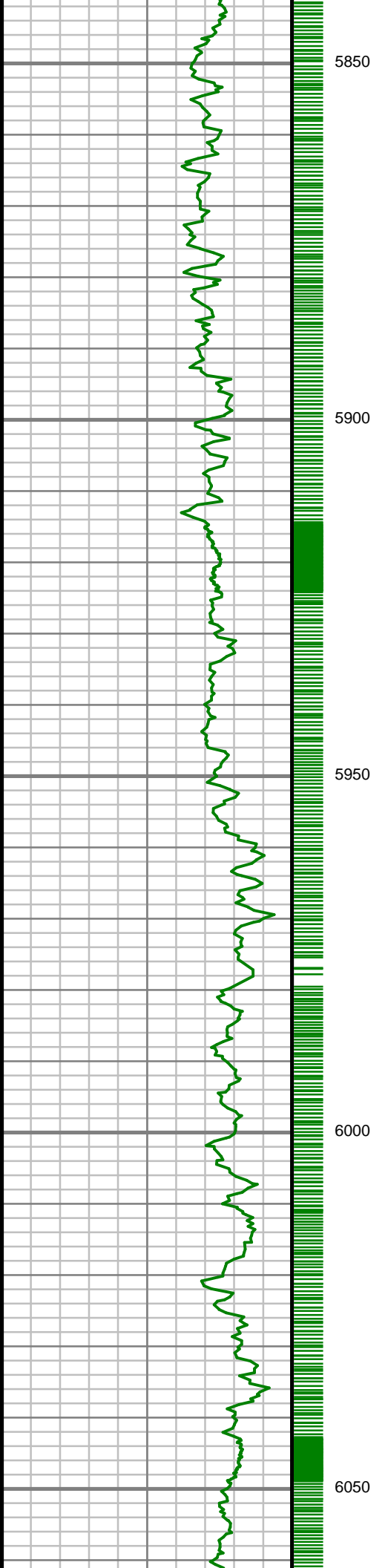
S: 99 MD: 5704.00 ft  
Inc: 2.20 deg Az: 34.10  
deg TVD: 5252.73 ft

S: 100 MD: 5736.00 ft  
Inc: 2.11 deg Az: 38.85  
deg TVD: 5284.70 ft

S: 101 MD: 5768.00 ft  
Inc: 2.11 deg Az: 51.86  
deg TVD: 5316.68 ft

S: 102 MD: 5800.00 ft  
Inc: 2.02 deg Az: 56.51  
deg TVD: 5348.66 ft

S: 103 MD: 5832.00 ft  
Inc: 1.94 deg Az: 51.33  
deg TVD: 5380.64 ft



S: 104 MD: 5864.00 ft  
Inc: 1.94 deg Az: 48.34  
deg TVD: 5412.62 ft

S: 105 MD: 5896.00 ft  
Inc: 2.02 deg Az: 53.44  
deg TVD: 5444.60 ft

S: 106 MD: 5928.00 ft  
Inc: 1.94 deg Az: 52.38  
deg TVD: 5476.59 ft

S: 107 MD: 5959.00 ft  
Inc: 2.11 deg Az: 50.01  
deg TVD: 5507.57 ft

S: 108 MD: 5990.00 ft  
Inc: 2.29 deg Az: 47.29  
deg TVD: 5538.54 ft

S: 109 MD: 6022.00 ft  
Inc: 2.46 deg Az: 45.26  
deg TVD: 5570.52 ft

S: 110 MD: 6054.00 ft  
Inc: 2.29 deg Az: 44.56  
deg TVD: 5602.49 ft

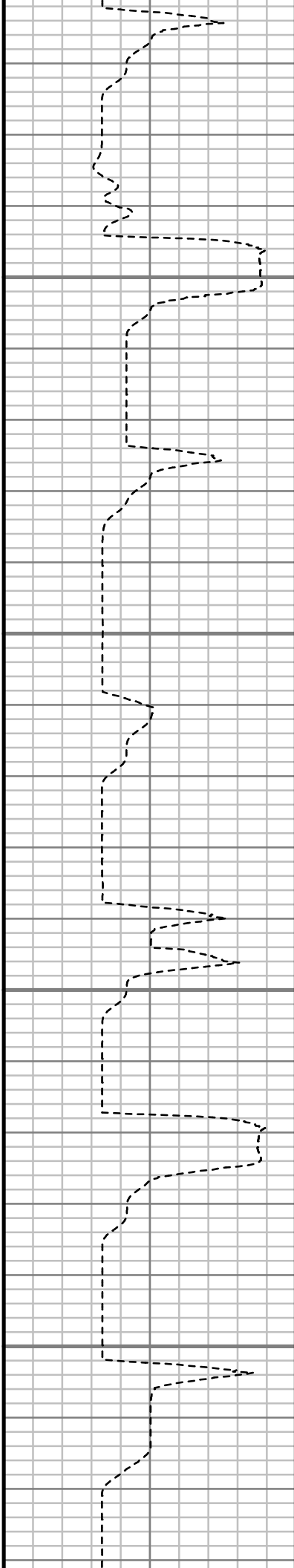


6100

6150

6200

6250



S: 111 MD: 6085.00 ft  
Inc: 2.29 deg Az: 47.72  
deg TVD: 5633.46 ft

S: 112 MD: 6116.00 ft  
Inc: 2.64 deg Az: 49.83  
deg TVD: 5664.44 ft

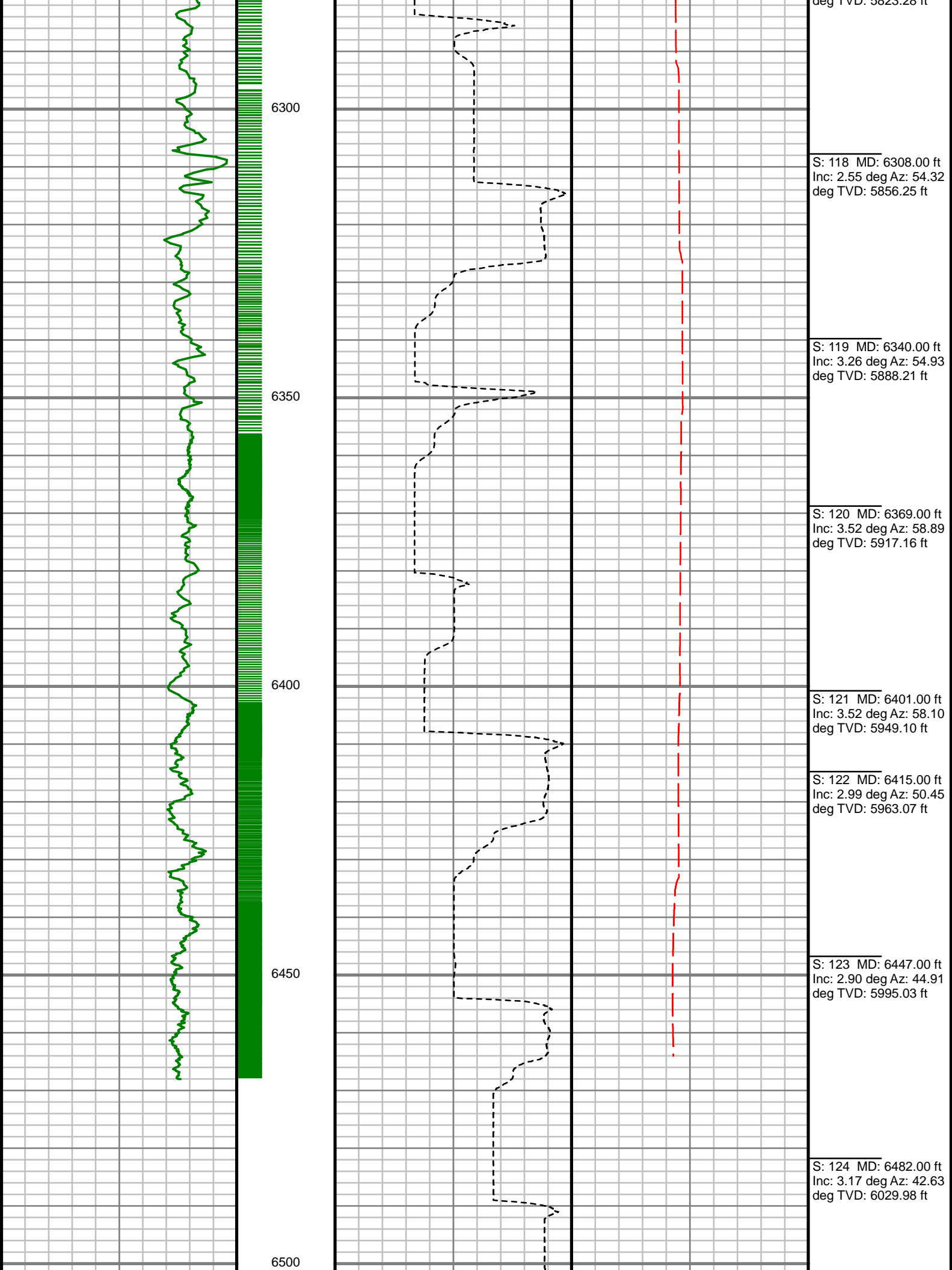
S: 113 MD: 6148.00 ft  
Inc: 2.73 deg Az: 51.68  
deg TVD: 5696.40 ft

S: 114 MD: 6180.00 ft  
Inc: 2.64 deg Az: 50.89  
deg TVD: 5728.37 ft

S: 115 MD: 6213.00 ft  
Inc: 2.46 deg Az: 48.96  
deg TVD: 5761.33 ft

S: 116 MD: 6244.00 ft  
Inc: 2.38 deg Az: 51.42  
deg TVD: 5792.30 ft

S: 117 MD: 6275.00 ft  
Inc: 2.38 deg Az: 51.06  
deg TVD: 5822.28 ft



Gamma Ray (GR)														
0	Unit = aapi													150

MEASURED DEPTH  
1,240 (ft)

S: 125 MD: 6512.00 ft Inc: 4.31 deg Az: 37.35 deg TVD: 6059.92 ft														

MD ft	Inc deg	Azim deg	TVD ft	VS ft	+N/-S ft	+E/-W ft	DLS °/100ft
0.00	0.00	0.00	0.00	0.00	0.00	0.00	Invalid
128.00	1.67	51.50	127.98	1.64	1.16	1.46	1.31
219.00	3.17	67.50	218.90	5.26	2.95	4.82	1.79
310.00	6.25	79.80	309.58	12.67	4.79	12.02	3.54
353.00	7.30	83.06	352.28	17.74	5.53	17.03	2.61
444.00	10.56	89.65	442.17	31.73	6.28	31.12	3.74
535.00	12.67	93.43	531.30	49.66	5.74	49.41	2.47
625.00	15.48	91.14	618.59	71.05	4.91	71.28	3.19
716.00	17.42	91.76	705.86	96.31	4.25	97.04	2.14
809.00	17.24	89.74	794.64	123.53	3.89	124.74	0.67
903.00	17.60	86.04	884.33	151.39	4.93	152.85	1.23
997.00	19.00	83.76	973.58	180.79	7.57	182.24	1.68
1091.00	20.15	84.99	1062.14	212.19	10.65	213.58	1.29
1170.00	22.20	86.90	1135.81	240.57	12.65	242.04	2.74
1263.00	26.70	89.33	1220.45	278.65	13.84	280.49	4.96
1356.00	28.69	91.55	1302.79	321.14	13.48	323.71	2.41
1451.00	29.91	91.70	1385.64	366.68	12.16	370.18	1.29
1545.00	30.31	89.58	1466.96	413.03	11.64	417.32	1.21
1638.00	30.19	89.36	1547.29	459.24	12.07	464.17	0.18
1732.00	30.95	89.07	1628.23	506.44	12.73	511.98	0.82

MD ft	Inc deg	Azim deg	TVD ft	VS ft	+N/-S ft	+E/-W ft	DLS °/100ft
1827.00	30.15	89.58	1710.04	554.09	13.30	560.26	0.89
1921.00	29.14	87.93	1791.74	600.04	14.30	606.74	1.38
2014.00	28.29	89.30	1873.30	644.21	15.39	651.40	1.16
2108.00	27.49	87.95	1956.38	687.69	16.44	695.36	1.08
2140.00	27.73	87.37	1984.74	702.39	17.04	710.18	1.13
2258.00	27.83	87.46	2089.14	756.92	19.52	765.12	0.09
2352.00	28.74	85.90	2171.91	801.16	22.11	809.58	1.25
2447.00	28.46	85.92	2255.32	846.40	25.35	854.94	0.29
2543.00	28.42	86.23	2339.74	891.86	28.48	900.55	0.16
2638.00	28.45	87.11	2423.27	936.79	31.11	945.71	0.44
2733.00	28.08	87.25	2506.95	981.43	33.32	990.64	0.40
2828.00	27.56	87.71	2590.97	1025.39	35.28	1034.94	0.59
2923.00	27.34	87.18	2675.27	1068.81	37.23	1078.69	0.35
3020.00	27.90	85.92	2761.22	1113.49	39.94	1123.57	0.83
3115.00	28.57	86.44	2844.91	1158.17	42.93	1168.41	0.75
3212.00	29.18	86.34	2929.85	1204.73	45.88	1215.16	0.63
3307.00	29.04	86.36	3012.85	1250.66	48.82	1261.28	0.15
3402.00	29.00	86.61	3095.93	1296.45	51.65	1307.28	0.13
3497.00	28.53	85.87	3179.20	1341.90	54.64	1352.90	0.62
3593.00	27.95	85.87	3263.78	1387.09	57.91	1398.21	0.60



MD ft	Inc deg	Azim deg	TVD ft	VS ft	+N/-S ft	+E/-W ft	DLS °/100ft
3688.00	27.81	84.49	3347.75	1431.33	61.65	1442.47	0.70
3782.00	26.74	83.39	3431.30	1474.30	66.19	1485.30	1.26
3877.00	25.72	82.64	3516.52	1516.23	71.29	1526.98	1.13
3909.00	25.51	82.56	3545.37	1530.05	73.07	1540.70	0.67
3940.00	25.81	81.48	3573.31	1543.46	74.93	1553.99	1.79
3972.00	25.85	79.97	3602.12	1557.40	77.18	1567.75	2.06
4004.00	25.83	80.21	3630.92	1571.35	79.58	1581.49	0.33
4035.00	25.99	77.70	3658.80	1584.89	82.18	1594.78	3.58
4066.00	25.80	76.58	3686.69	1598.41	85.19	1607.98	1.69
4101.00	23.72	71.05	3718.48	1612.97	89.24	1622.05	8.89
4132.00	22.41	68.56	3747.00	1624.92	93.43	1633.45	5.27
4163.00	22.23	67.04	3775.67	1636.43	97.88	1644.35	1.95
4195.00	22.22	65.89	3805.30	1648.20	102.71	1655.45	1.36
4227.00	22.22	65.88	3834.92	1659.93	107.65	1666.49	0.01
4259.00	23.44	62.73	3864.41	1671.88	113.04	1677.67	5.40
4291.00	24.06	60.73	3893.71	1684.11	119.15	1689.02	3.18
4322.00	24.32	58.91	3921.98	1696.03	125.53	1700.00	2.55
4352.00	23.33	56.23	3949.43	1707.23	132.03	1710.23	4.89
4403.00	21.47	55.20	3996.58	1724.94	142.97	1726.29	3.74
4435.00	20.32	53.35	4026.47	1735.22	149.63	1735.55	4.12

MD ft	Inc deg	Azim deg	TVD ft	VS ft	+N/-S ft	+E/-W ft	DLS °/100ft
4467.00	20.06	52.47	4056.51	1745.05	156.29	1744.36	1.26
4498.00	20.41	53.35	4085.59	1754.60	162.75	1752.92	1.50
4530.00	20.76	55.81	4115.55	1764.76	169.27	1762.08	2.92
4561.00	20.32	55.28	4144.58	1774.66	175.42	1771.05	1.54
4593.00	19.27	54.23	4174.69	1784.46	181.67	1779.91	3.48
4624.00	18.30	51.24	4204.04	1793.33	187.71	1787.85	4.40
4656.00	17.95	51.06	4234.45	1802.05	193.95	1795.60	1.11
4688.00	17.51	51.94	4264.93	1810.61	200.02	1803.23	1.61
4719.00	17.16	52.56	4294.52	1818.78	205.67	1810.53	1.28
4751.00	17.33	52.91	4325.09	1827.21	211.42	1818.08	0.64
4783.00	17.60	54.67	4355.61	1835.82	217.09	1825.83	1.84
4815.00	18.12	55.72	4386.07	1844.73	222.69	1833.89	1.93
4847.00	18.21	55.90	4416.47	1853.83	228.30	1842.14	0.32
4879.00	18.48	54.84	4446.85	1862.98	234.02	1850.42	1.33
4910.00	18.39	54.23	4476.26	1871.83	239.70	1858.41	0.69
4940.00	18.12	54.23	4504.75	1880.29	245.20	1866.03	0.88
4973.00	17.86	55.02	4536.13	1889.50	251.10	1874.34	1.09
5005.00	17.60	56.25	4566.61	1898.37	256.60	1882.38	1.43
5036.00	17.68	55.72	4596.16	1906.95	261.85	1890.17	0.59
5068.00	17.68	56.34	4626.65	1915.83	267.29	1898.23	0.58

MD ft	Inc deg	Azim deg	TVD ft	VS ft	+N/-S ft	+E/-W ft	DLS °/100ft
5101.00	17.24	57.22	4658.12	1924.93	272.71	1906.52	1.55
5132.00	16.80	56.34	4687.77	1933.27	277.68	1914.11	1.64
5164.00	15.40	54.05	4718.51	1941.32	282.74	1921.40	4.82
5196.00	13.55	50.19	4749.49	1948.39	287.64	1927.72	6.51
5225.00	12.23	50.80	4777.76	1954.02	291.75	1932.70	4.57
5259.00	11.17	53.35	4811.06	1960.11	295.99	1938.14	3.46
5291.00	10.38	54.40	4842.49	1965.48	299.52	1942.97	2.55
5323.00	10.12	53.09	4873.98	1970.58	302.89	1947.56	1.10
5355.00	9.33	49.57	4905.52	1975.33	306.26	1951.78	3.09
5386.00	9.06	47.29	4936.12	1979.54	309.54	1955.49	1.45
5418.00	8.36	47.99	4967.75	1983.64	312.81	1959.07	2.22
5450.00	7.30	50.27	4999.46	1987.37	315.67	1962.36	3.44
5482.00	6.42	55.37	5031.23	1990.76	317.98	1965.40	3.34
5514.00	5.72	57.04	5063.05	1993.86	319.87	1968.21	2.27
5545.00	4.57	55.46	5093.92	1996.41	321.41	1970.52	3.72
5577.00	3.43	49.22	5125.84	1998.39	322.76	1972.30	3.82
5607.00	2.46	43.15	5155.80	1999.68	323.81	1973.42	3.38
5640.00	2.29	36.47	5188.77	2000.72	324.86	1974.30	0.99
5674.00	2.20	35.51	5222.75	2001.68	325.94	1975.08	0.28
5704.00	2.20	34.10	5252.73	2002.49	326.88	1975.73	0.18

MD ft	Inc deg	Azim deg	TVD ft	VS ft	+N/-S ft	+E/-W ft	DLS °/100ft
5736.00	2.11	38.85	5284.70	2003.36	327.85	1976.45	0.62
5768.00	2.11	51.86	5316.68	2004.32	328.67	1977.28	1.49
5800.00	2.02	56.51	5348.66	2005.36	329.35	1978.22	0.59
5832.00	1.94	51.33	5380.64	2006.35	330.00	1979.11	0.62
5864.00	1.94	48.34	5412.62	2007.29	330.70	1979.94	0.32
5896.00	2.02	53.44	5444.60	2008.25	331.39	1980.79	0.61
5928.00	1.94	52.38	5476.59	2009.24	332.06	1981.67	0.30
5959.00	2.11	50.01	5507.57	2010.19	332.74	1982.53	0.63
5990.00	2.29	47.29	5538.54	2011.21	333.53	1983.42	0.66
6022.00	2.46	45.26	5570.52	2012.31	334.45	1984.38	0.61
6054.00	2.29	44.56	5602.49	2013.40	335.39	1985.31	0.56
6085.00	2.29	47.72	5633.46	2014.42	336.24	1986.21	0.41
6116.00	2.64	49.83	5664.44	2015.56	337.12	1987.21	1.17
6148.00	2.73	51.68	5696.40	2016.87	338.07	1988.37	0.39
6180.00	2.64	50.89	5728.37	2018.18	339.01	1989.54	0.30
6213.00	2.46	48.96	5761.33	2019.45	339.95	1990.66	0.59
6244.00	2.38	51.42	5792.30	2020.59	340.79	1991.67	0.44
6275.00	2.38	51.06	5823.28	2021.72	341.59	1992.67	0.05
6308.00	2.55	54.32	5856.25	2022.98	342.45	1993.80	0.68
6340.00	3.26	54.93	5888.21	2024.44	343.39	1995.12	2.20

MD	Inc	Azim	TVD	VS	+N/-S	+E/-W	DLS
ft	deg	deg	ft	ft	ft	ft	°/100ft
6369.00	3.52	58.89	5917.16	2026.02	344.32	1996.55	1.22
6401.00	3.52	58.10	5949.10	2027.84	345.35	1998.23	0.15
6415.00	2.99	50.45	5963.07	2028.56	345.81	1998.88	4.87
6447.00	2.90	44.91	5995.03	2029.95	346.91	2000.09	0.93
6482.00	3.17	42.63	6029.98	2031.44	348.25	2001.37	0.83
6512.00	4.31	37.35	6059.92	2032.93	349.76	2002.62	3.98

MD ft	Inc deg	Azim deg	TVD ft	VS ft	+N/-S ft	+E/-W ft	DLS °/100ft

5" = 100' MD