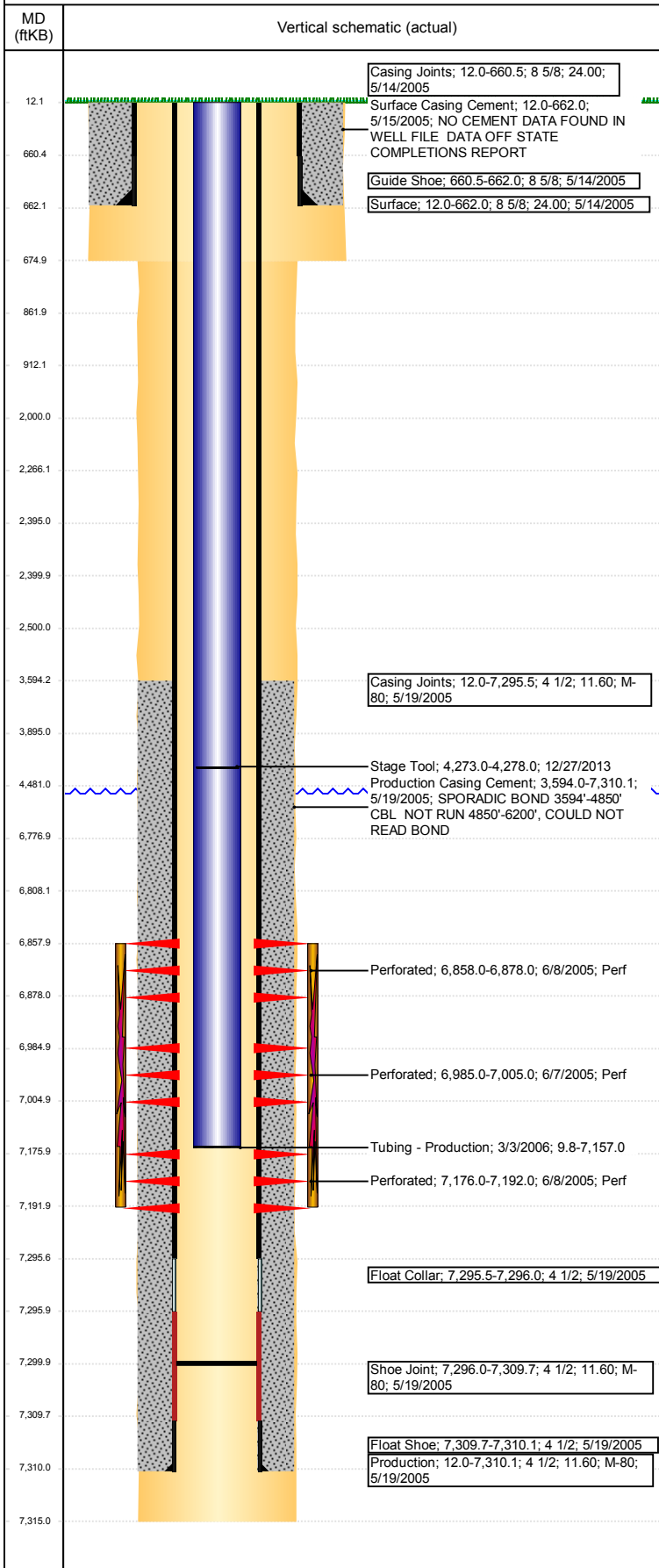


Wellbore Schematic Input Report

Well Name: CARLSON 18-44

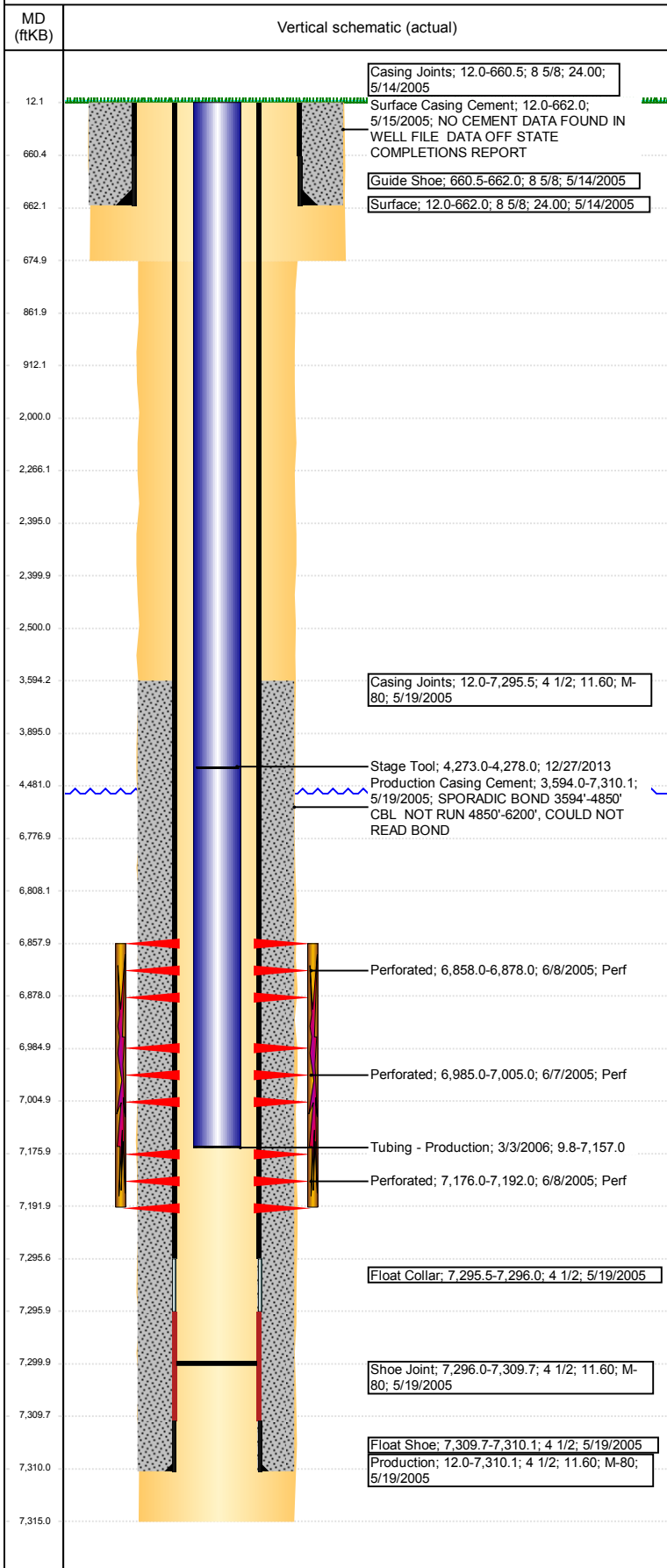
VERTICAL - ORIGINAL HOLE, 1/4/2018 1:06:06 PM



Well Header							
API 05-123-22810		Business Unit DJ BASIN		District 15	Well Config VERTICAL		
Original KB Elevation (ft) 4,816		KB - GL / MSL (ftKB) 12.00		Spud Date 5/14/2005		P & A Date	
Comment DISCREPANCY: DRL RPT PROD CSG SET @ 7310, ST RPT 7315. USED 7310.							
Directions To Well							
Congressional Location							
Quarter 3 SE	Quarter 4 SE	Section 18	Township 6	Twntshp N/S Dir N	Range 66	Range E/W Dir W	
Bottom Hole Location							
North-South Distance (ft)		From N or S Line		East-West Distance (ft)		From E or W Line	
Plug Back Total Depths							
Date	Depth (ftKB)	Method		Com			
5/19/2005	7,295.5	CASING TALLY		TOP OF FLOAT COLLAR			
6/2/2005	7,286.0	CASED HOLE LOG		DEPTH LOGGER ON CBL			
3/3/2006	7,300.0	TAG		MOST RECENT REPORTED CLEAN OUT			
Wellbore Sections							
Section Des		Size (in)		Act Top, MD (ftKB)		Act Btm, MD (ftKB)	
SURFACE		12 3/4		12		675	
PRODUCTION		7 7/8		675		7,315	
Zone Statuses							
Zone Name	Status Date	Status	Fluid Type	Job	Prod Method		
NIOBRARA	6/30/2005	PR		DRILLING/CO...			
CODELL	6/30/2005	PR		DRILLING/CO...			
Casing Strings							
Surface, 662.0ftKB							
Casing Description Surface		Run Date 5/14/2005	OD (in) 8 5/8	Wt/Len (l...) 24.00	Grade 	Top, MD (ft...) 12.0	
						MD (ftKB) 662.0	
Production, 7,310.1ftKB							
Casing Description Production		Run Date 5/19/2005	OD (in) 4 1/2	Wt/Len (l...) 11.60	Grade M-80	Top, MD (ft...) 12.0	
						MD (ftKB) 7,310.1	
Cement							
Description Surface Casing Cement				Top Depth (ftKB) 12.0		Bottom Depth (ftKB) 662.0	
Description Production Casing Cement				Top Depth (ftKB) 3,594.0		Bottom Depth (ftKB) 7,310.1	
Description Balance Plug				Top Depth (ftKB) 3,895.0		Bottom Depth (ftKB) 4,481.0	
Description Cement Squeeze				Top Depth (ftKB) 2,000.0		Bottom Depth (ftKB) 2,500.0	
Description Balance Plug				Top Depth (ftKB) 2,400.0		Bottom Depth (ftKB) 2,500.0	
Description Cement Plug				Top Depth (ftKB) 2,266.0		Bottom Depth (ftKB) 2,395.0	
Description Shoe Plug				Top Depth (ftKB) 862.0		Bottom Depth (ftKB) 912.0	
Description Shoe Plug				Top Depth (ftKB) 12.0		Bottom Depth (ftKB) 862.0	
Tubing Strings							
Tubing Description Tubing - Production		Run Date 3/3/2006	String... 2 3/8	ID (in) 2.00	Wt (lb/ft) 4.70	Grade J-55	Len (ft) 7,147.19
							Set De...
Tubing Components							
Item Des		OD (in)	Wt (lb/ft)	Grade	Jts	Len (ft)	Btm (ftKB)
EUE 8rd Tubing		2 3/8	4.70	J-55	231	7,145.69	7,155.5
Seal Nipple		2 3/8				1.00	7,156.5
Mule Shoe		2 3/8				0.50	7,157.0
Other In Hole							
Run Date		Des			OD (in)	Top (ftKB)	Btm (ftKB)
		Cast Iron Bridge Plug w/ 2 SX Cement			3.99	6,777.0	6,808.0
		Cement Retainer			3.99	2,395.0	2,400.0
Logs							
Date		Type			Top, MD (ftKB)		Btm, MD (ftKB)
5/18/2005		COMPENSATED DENSITY			3,500.0		7,294.0
5/18/2005		INDUCTION			662.0		7,314.0

Well Name: CARLSON 18-44

VERTICAL - ORIGINAL HOLE, 1/4/2018 1:06:07 PM



Logs			
Date	Type	Top, MD (ftKB)	Btm, MD (ftKB)
6/2/2005	CBL/CCL/GR	3,450.0	7,284.0
12/8/2017	GYRO	12.0	4,230.0

Perforation Data					
Linked Zone	Bnch/St g	Sum of Entered Shot Total	Top (ftKB)	Btm (ftKB)	Date
		0	2,500.00	2,500.00	1/4/2018
NIORARA, ORIGINAL HOLE	A	40	6,858.00	6,878.00	6/8/2005
NIORARA, ORIGINAL HOLE	B	40	6,985.00	7,005.00	6/7/2005
CODELL, ORIGINAL HOLE		64	7,176.00	7,192.00	6/8/2005
Total (Sum)		144			

Stimulation Intervals		
Start Date	Primary Job Type	
6/9/2005	DRILLING/COMPLETION - ORIGINAL	
Technical Result	Tech Result Details	Tech Result Note
Comment		
LIMITED ENTRY FRAC		