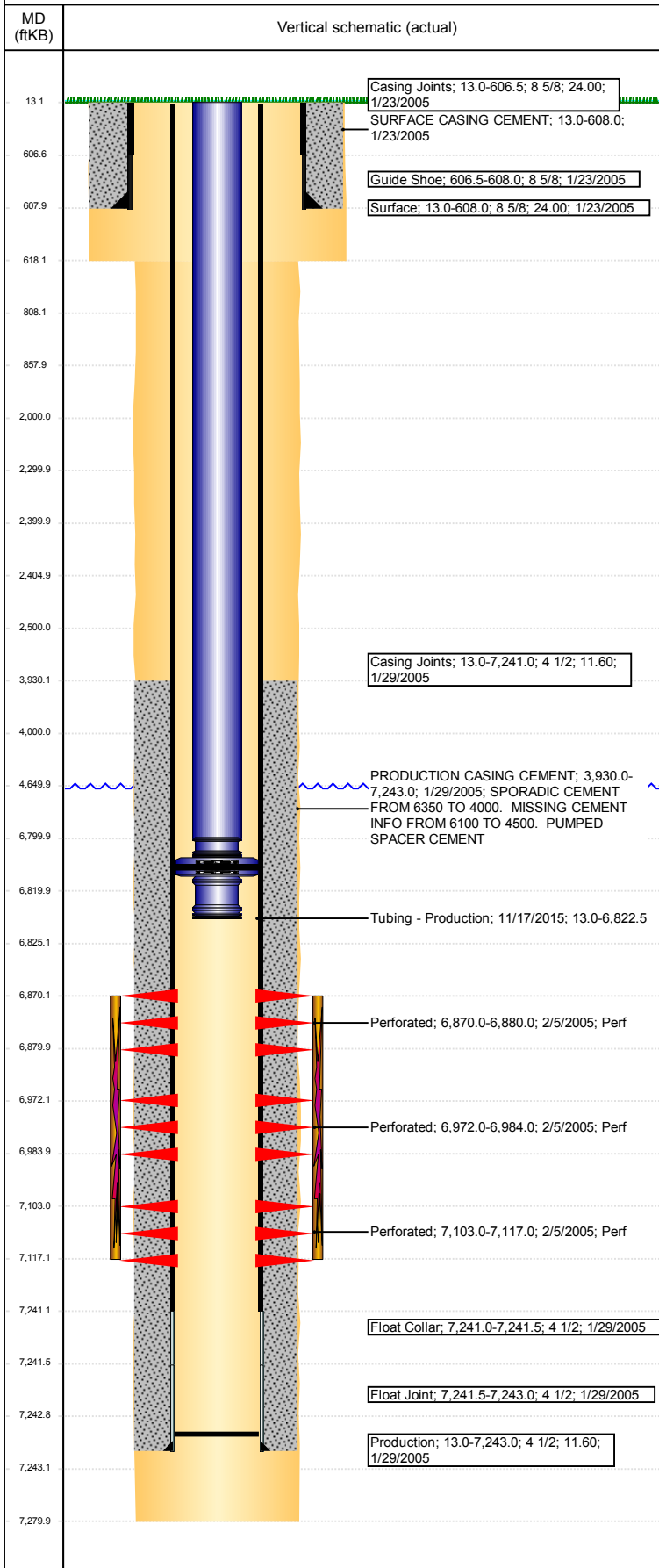


Wellbore Schematic Input Report

Well Name: FRANK 22-34

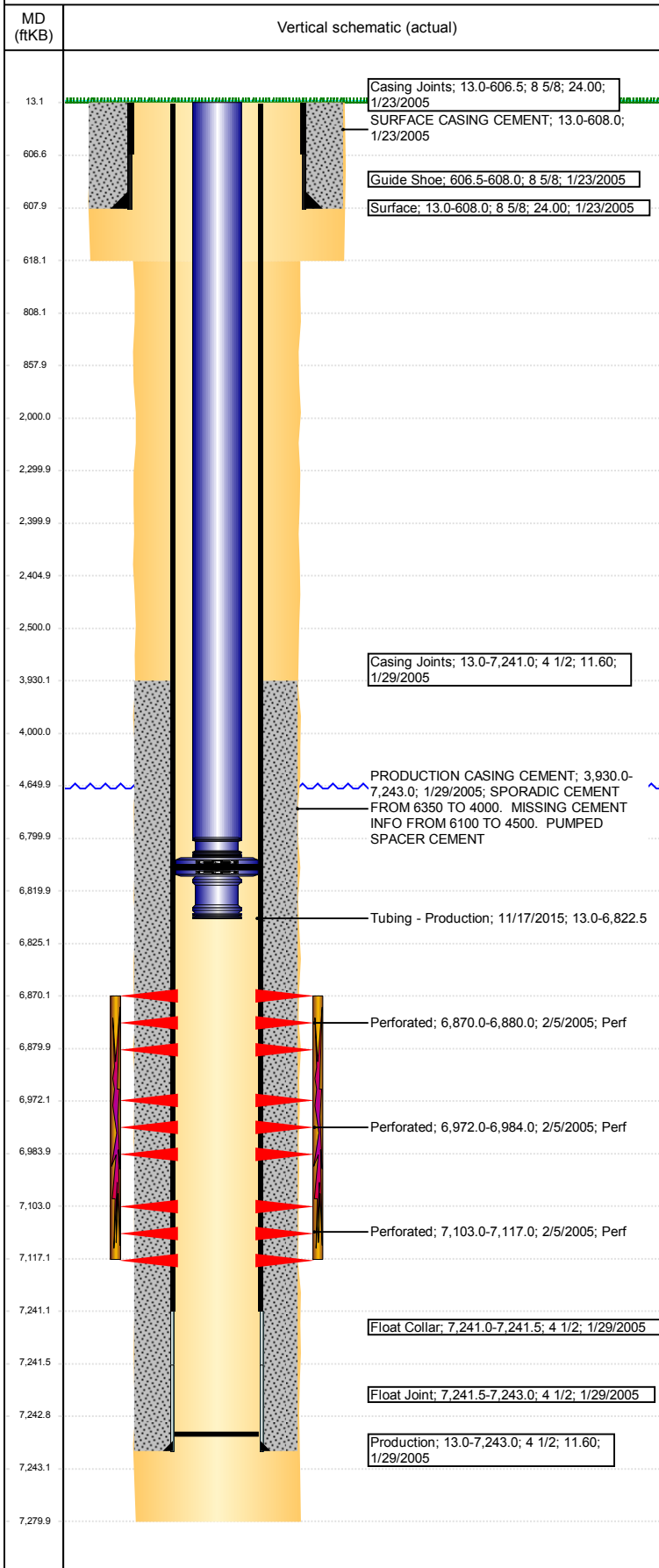
VERTICAL - ORIGINAL HOLE, 1/4/2018 12:59:59 PM



Well Header								
API 05-123-22350		Business Unit DJ BASIN		District 15		Well Config VERTICAL		
Original KB Elevation (ft) 4,819		KB - GL / MSL (ftKB) 13.00		Spud Date 1/23/2005		P & A Date		
Comment								
Directions To Well WCRS 43 & 30, EAST 0.5 MILE, NORTH PAST TANK BATTERY 300', WEST 0.1 MILE INTO.								
Congressional Location								
Quarter 3 SE		Quarter 4 SW	Section 22	Township 3	Twntshp N/S Dir N	Range 65	Range E/W Dir W	
Bottom Hole Location								
North-South Distance (ft)			From N or S Line		East-West Distance (ft)		From E or W Line	
Plug Back Total Depths								
Date		Depth (ftKB)	Method		Com			
2/4/2005		7,197.0	CASED HOLE LOG		DEPTH LOGGER ON CBL			
10/13/2005		7,240.0	TAG		CLEAN OUT TO LAND TUBING			
10/16/2014		7,242.9	TAG		TBG TALLY MEASUREMENT.			
Wellbore Sections								
Section Des			Size (in)		Act Top, MD (ftKB)		Act Btm, MD (ftKB)	
SURFACE			12 1/4		13		618	
PRODUCTION			7 7/8		618		7,280	
Zone Statuses								
Zone Name		Status Date	Status	Fluid Type	Job	Prod Method		
CODELL		2/14/2005	PR		DRILLING/CO...			
CODELL		10/17/2014	TA		HORIZONTAL...			
NIOBRARA		2/14/2005	PR		DRILLING/CO...			
NIOBRARA		10/17/2014	TA		HORIZONTAL...			
Casing Strings								
Surface, 608.0ftKB								
Casing Description		Run Date	OD (in)	Wt/Len (l...	Grade	Top, MD (ft...	MD (ftKB)	
Surface		1/23/2005	8 5/8	24.00		13.0	608.0	
Production, 7,243.0ftKB								
Casing Description		Run Date	OD (in)	Wt/Len (l...	Grade	Top, MD (ft...	MD (ftKB)	
Production		1/29/2005	4 1/2	11.60		13.0	7,243.0	
Cement								
Description					Top Depth (ftKB)		Bottom Depth (ftKB)	
SURFACE CASING CEMENT					13.0		608.0	
Description					Top Depth (ftKB)		Bottom Depth (ftKB)	
PRODUCTION CASING CEMENT					3,930.0		7,243.0	
Description					Top Depth (ftKB)		Bottom Depth (ftKB)	
Dump Bail					6,800.0		6,820.0	
Description					Top Depth (ftKB)		Bottom Depth (ftKB)	
Balance Plug					4,000.0		4,650.0	
Description					Top Depth (ftKB)		Bottom Depth (ftKB)	
Balance Plug					2,405.0		2,500.0	
Description					Top Depth (ftKB)		Bottom Depth (ftKB)	
Balance Plug					2,300.0		2,400.0	
Description					Top Depth (ftKB)		Bottom Depth (ftKB)	
Cement Squeeze					2,000.0		2,500.0	
Description					Top Depth (ftKB)		Bottom Depth (ftKB)	
Balance Plug					808.0		858.0	
Description					Top Depth (ftKB)		Bottom Depth (ftKB)	
Balance Plug					608.0		808.0	
Description					Top Depth (ftKB)		Bottom Depth (ftKB)	
Balance Plug					13.0		608.0	
Tubing Strings								
Tubing Description		Run Date	String...	ID (in)	Wt (lb/ft)	Grade	Len (ft)	Set De...
Tubing		10/13/2005	2 3/8				7,059.00	
Tubing Components								
Item Des		OD (in)	Wt (lb/ft)	Grade	Jts	Len (ft)	Btm (ftKB)	Btm (TVD) (ftKB)
Tubing		2 3/8			214	7,057.40	7,070.4	
Seal Nipple		2 3/8			1	1.10	7,071.5	
Notched collar		2 3/8			1	0.50	7,072.0	
Tubing Description		Run Date	String...	ID (in)	Wt (lb/ft)	Grade	Len (ft)	Set De...
Tubing		10/17/2014	2 3/8	2.00	4.70	J-55	6,337.91	

Well Name: FRANK 22-34

VERTICAL - ORIGINAL HOLE, 1/4/2018 1:00:00 PM



Tubing Components							
Item Des	OD (in)	Wt (lb/ft)	Grade	Jts	Len (ft)	Btm (ftKB)	Btm (TVD) (ftKB)
EUE 8rd Tubing	2 3/8	4.70	J-55	192	6,335.78	6,348.8	
Pump Seating Nipple	2 3/8	4.70	N-80	1	1.13	6,349.9	
Blade Bit / Tbg Collar	3 7/8	0.00	X	1	1.00	6,350.9	
Tubing Description	Run Date	String...	ID (in)	Wt (lb/ft)	Grade	Len (ft)	Set De...
Tubing - Production	3/23/2015	2 3/8	2.00	4.70	J-55	7,063.57	

Tubing Components							
Item Des	OD (in)	Wt (lb/ft)	Grade	Jts	Len (ft)	Btm (ftKB)	Btm (TVD) (ftKB)
Pup Joint	2 3/8	4.70	J-55	1	10.00	23.0	
EUE 8rd Tubing	2 3/8	4.70	J-55	215	7,051.92	7,074.9	
Pump Seating Nipple	2 3/8	0.00	X	1	1.10	7,076.0	
Notched collar	2 3/8	0.00	X	1	0.55	7,076.6	
Tubing Description	Run Date	String...	ID (in)	Wt (lb/ft)	Grade	Len (ft)	Set De...
Tubing - Production	11/17/2015	2 3/8	2.00	4.70	J-55	6,809.50	

Tubing Components							
Item Des	OD (in)	Wt (lb/ft)	Grade	Jts	Len (ft)	Btm (ftKB)	Btm (TVD) (ftKB)
Tubing	2 3/8	4.70	J-55	207	6,780.32	6,793.3	
X Nipple	2 3/8	4.70	N-80	1	1.10	6,794.4	
Perforated Joint	2 3/8	4.70	J-55	1	3.19	6,797.6	
Pup Joint	2 3/8	4.70	N-80	1	8.05	6,805.7	
XN Nipple	2 3/8	4.70	N-80	1	1.03	6,806.7	
Packer	3.99	0.00	X	1	7.35	6,814.0	
Pup Joint	2 3/8	4.70	N-80	1	8.08	6,822.1	
Wireline Guide	2 3/8	4.70	N-80	1	0.38	6,822.5	

Other In Hole				
Run Date	Des	OD (in)	Top (ftKB)	Btm (ftKB)
1/4/2018	Cast Iron Bridge Plug	4	6,820.0	6,825.0
1/4/2018	Cement Retainer	4	2,400.0	2,405.0

Logs			
Date	Type	Top, MD (ftKB)	Btm, MD (ftKB)
1/28/2005	COMPENSATED DENSITY	4,400.0	7,227.0
1/28/2005	INDUCTION	608.0	7,247.0
2/4/2005	CEMENT BOND	3,700.0	7,195.0
1/13/2014	GYRO	0.0	6,900.0

Perforation Data					
Linked Zone	Bnch/St g	Sum of Entered Shot Total	Top (ftKB)	Btm (ftKB)	Date
CODELL, ORIGINAL HOLE		0	2,500.00	2,500.00	1/4/2018
NIORARA, ORIGINAL HOLE	B	40	6,870.00	6,880.00	2/5/2005
NIORARA, ORIGINAL HOLE	C	48	6,972.00	6,984.00	2/5/2005
CODELL, ORIGINAL HOLE		56	7,103.00	7,117.00	2/5/2005
Total (Sum)		144			

Stimulation Intervals		
Start Date	Primary Job Type	
2/11/2005	DRILLING/COMPLETION - ORIGINAL	
Technical Result	Tech Result Details	Tech Result Note

Comment
LIMITED ENTRY FRAC