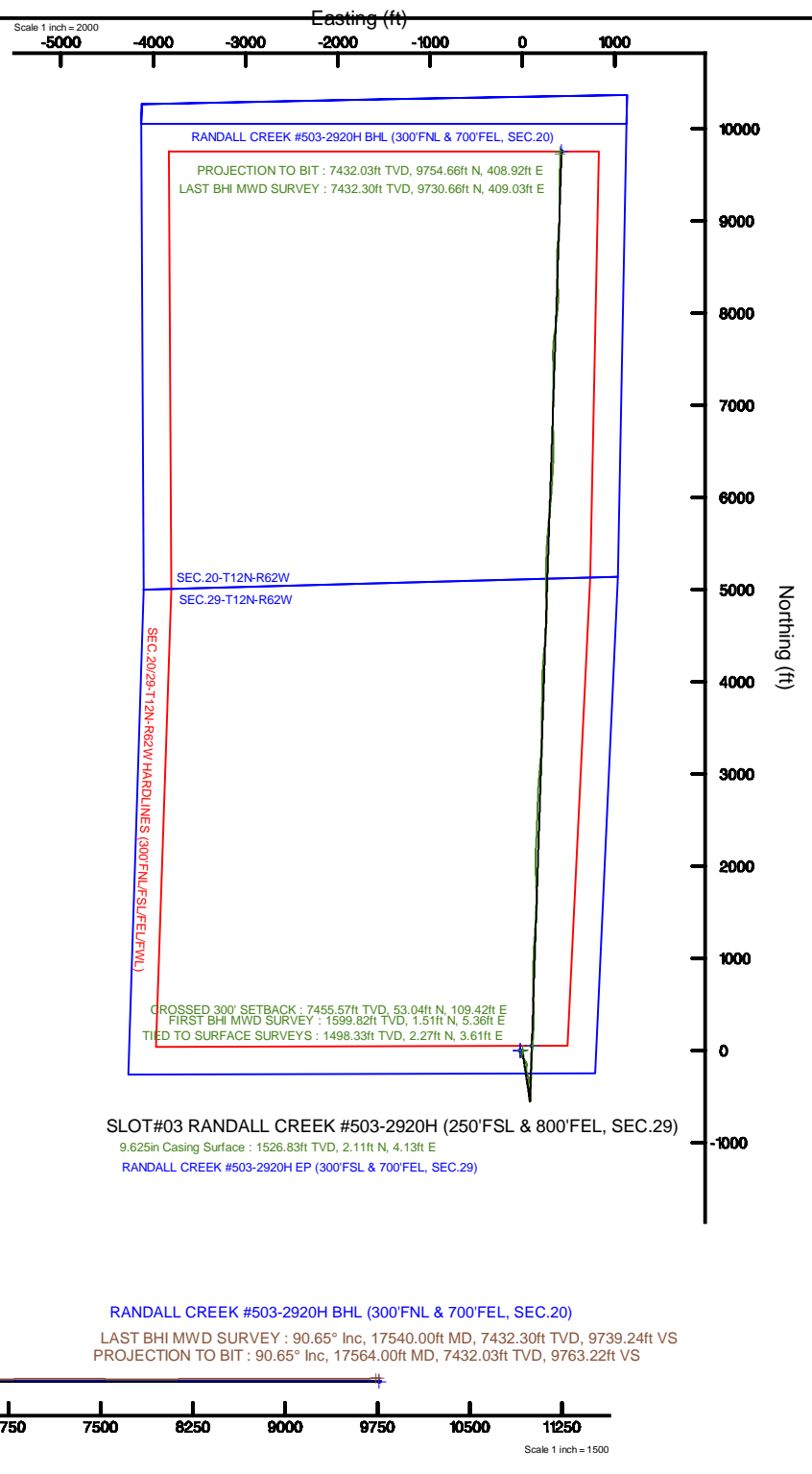
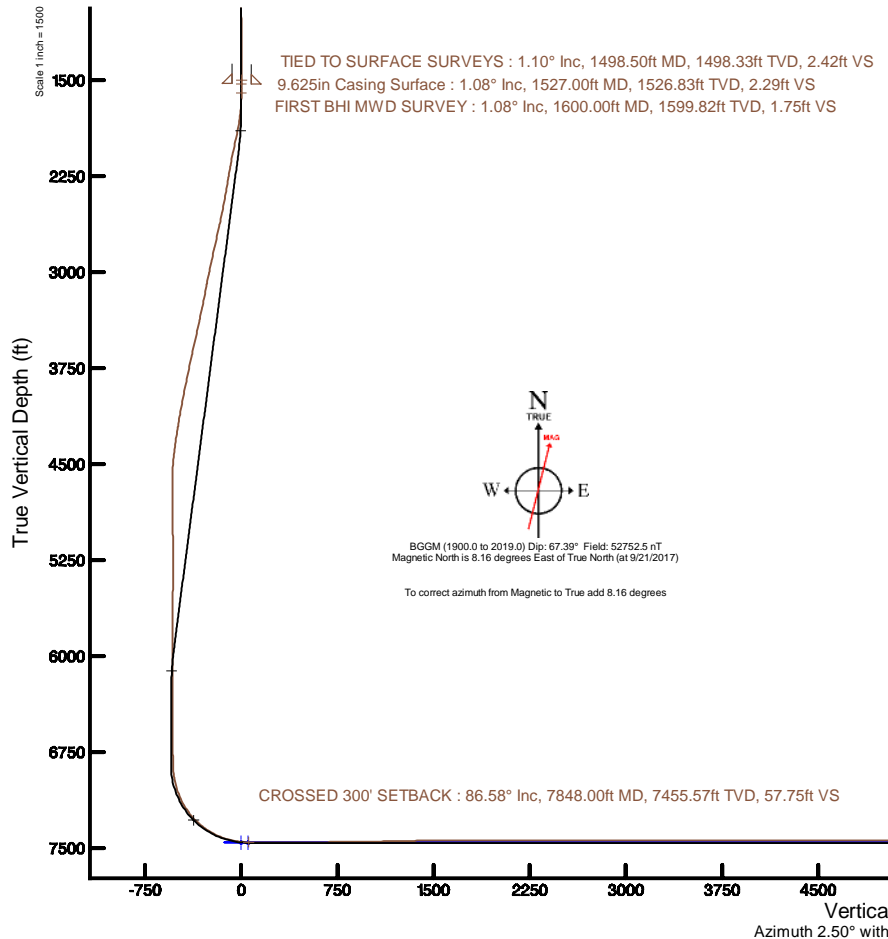


FIFTH CREEK ENERGY

Location: COLORADO Slot: SLOT#03 RANDALL CREEK #503-2920H (250'FSL & 800'FEL, SEC.29)
 Field: WELD COUNTY (NAD 83 / TN) Well: RANDALL CREEK #503-2920H
 Facility: SEC.29-T12N-R62W Wellbore: RANDALL CREEK #503-2920H_PWB

Plot reference wellpath is RANDALL CREEK #503-2920H PWP (REV-A.0)	
True vertical depths are referenced to UNIT 406 (21KB) (RKB)	Grid System: NAD83 / Lambert Colorado SP, Northern Zone (501), US feet
Measured depths are referenced to UNIT 406 (21KB) (RKB)	* = Wellpath was transformed from a different geodetic datum
UNIT 406 (21KB) (RKB) to Mean Sea Level: 5368 feet	North Reference: True north
Mean Sea Level to Mud line (At Slot: SLOT#03 RANDALL CREEK #503-2920H (250'FSL & 800'FEL, SEC.29)): 0 feet	Scale: True distance
Coordinates are in feet referenced to Slot	Depths are in feet
	Created by: ingmjmr on 2017-11-15
	Database: Denver



Actual Wellpath Report
 RANDALL CREEK #503-2920H AWP
 Page 1 of 9



REFERENCE WELLPATH IDENTIFICATION			
Operator	FIFTH CREEK ENERGY	Slot	SLOT#03 RANDALL CREEK #503-2920H (250'FSL & 800'FEL, SEC.29)
Area	COLORADO	Well	RANDALL CREEK #503-2920H
Field	WELD COUNTY (NAD 83 / TN)	Wellbore	RANDALL CREEK #503-2920H AWB
Facility	SEC.29-T12N-R62W		

REPORT SETUP INFORMATION			
Projection System	NAD83 / Lambert Colorado SP, Northern Zone (501), US feet	Software System	WellArchitect® 5.0
North Reference	True	User	ingmjamm
Scale	1.000037	Report Generated	11/15/2017 at 2:32:08 PM
Convergence at slot	0.76' East	Database/Source file	Denver/RANDALL_CREEK_#503-2920H_AWP.xml

WELLPATH LOCATION						
Slot Location	Local coordinates		Grid coordinates		Geographic coordinates	
	North(ft)	East(ft)	Easting(US ft)	Northing(US ft)	Latitude	Longitude
Facility Reference Pt	0.00	49.86	332091.26	159810.24	40°58'26.630"N	104°20'15.730"W
Field Reference Pt			332091.40	159809.59	40°58'26.630"N	104°20'16.380"W
			331082.01	1578056.18	40°54'53.000"N	104°22'29.410"W

WELLPATH DATUM			
Calculation method	Minimum curvature	UNIT 406 (21KB) (RKB) to Facility Vertical Datum	5368.00ft
Horizontal Reference Pt	Slot	UNIT 406 (21KB) (RKB) to Mean Sea Level	5368.00ft
Vertical Reference Pt	UNIT 406 (21KB) (RKB)	UNIT 406 (21KB) (RKB) to Mud Line at Slot (SLOT#03 RANDALL CREEK #503-2920H (250'FSL & 800'FEL, SEC.29))	5368.00ft
MD Reference Pt	UNIT 406 (21KB) (RKB)	Section Origin	N 0.00, E 0.00 ft
Field Vertical Reference	Mean Sea Level	Section Azimuth	2.50°

Actual Wellpath Report
 RANDALL CREEK #503-2920H AWP
 Page 2 of 9



REFERENCE WELLPATH IDENTIFICATION				Slot	SLOT#03 RANDALL CREEK #503-2920H (250'FSL & 800'FEL, SEC.29)
Operator	FIFTH CREEK ENERGY			Well	RANDALL CREEK #503-2920H
Area	COLORADO			Wellbore	RANDALL CREEK #503-2920H AWB
Field	WELD COUNTY (NAD 83 / TN)				
Facility	SEC.29-T12N-R62W				

WELLPATH DATA (174 stations)												
MD (ft)	Inclination (°)	Azimuth (°)	YVD (ft)	Vert Sect (ft)	North (ft)	East (ft)	Latitude	Longitude	DLS (ft/100ft)	Comments		
1498.00	1.100	103.980	1498.33	2.27	2.27	3.81	40°58'26.662"N	104°20'15.683"W	0.86	FIELD TO SURFACE SURVEYS		
1600.00	1.098	122.730	1599.82	1.75	1.51	5.36	40°58'26.645"N	104°20'15.660"W	0.38	FIRST BHM MWD SURVEY		
1608.00	4.466	214.962	1698.72	-1.82	-2.58	4.00	40°58'26.610"N	104°20'15.678"W	4.87			
1790.00	9.810	215.042	1788.95	-11.77	-11.66	-2.77	40°58'26.515"N	104°20'15.768"W	5.63			
1885.00	10.728	180.784	1884.51	-27.44	-27.44	-7.46	40°58'26.362"N	104°20'15.827"W	6.83			
1980.00	11.834	174.504	1975.65	-45.94	-45.94	-8.61	40°58'26.178"N	104°20'15.816"W	1.90			
2076.00	13.960	158.620	2069.37	-65.81	-65.81	-1.27	40°58'25.980"N	104°20'15.747"W	4.54			
2172.00	11.788	144.644	2163.04	-83.70	-84.16	3.94	40°58'25.798"N	104°20'15.615"W	3.26			
2268.00	12.440	148.900	2258.91	-100.08	-101.04	19.81	40°58'25.632"N	104°20'15.472"W	1.14			
2364.00	12.270	139.584	2359.69	-116.17	-117.67	31.75	40°58'25.467"N	104°20'15.318"W	2.10			
2459.00	12.144	151.104	2443.96	-132.00	-134.10	43.13	40°58'25.305"N	104°20'15.168"W	2.96			
2555.00	11.710	176.770	2537.55	-150.41	-152.68	48.56	40°58'25.121"N	104°20'15.097"W	5.50			
2651.00	12.960	168.178	2633.44	-170.30	-172.48	46.37	40°58'24.928"N	104°20'15.129"W	4.11			
2747.00	12.820	186.610	2725.11	-191.11	-193.14	42.42	40°58'24.722"N	104°20'15.177"W	1.98			
2842.00	12.270	174.730	2817.85	-211.63	-213.67	42.13	40°58'24.519"N	104°20'15.181"W	2.77			
2938.00	12.160	169.110	2911.68	-231.67	-233.76	44.88	40°58'24.303"N	104°20'15.144"W	1.24			
3032.00	12.800	167.300	3003.46	-251.25	-253.63	49.14	40°58'24.124"N	104°20'15.089"W	0.80			
3128.00	12.600	150.194	3095.20	-269.97	-272.69	66.50	40°58'23.936"N	104°20'14.993"W	3.89			
3221.00	12.120	154.520	3188.00	-287.52	-290.61	66.00	40°58'23.768"N	104°20'14.870"W	1.08			
3317.00	12.840	177.470	3289.89	-306.65	-309.93	70.82	40°58'23.568"N	104°20'14.807"W	5.06			
3410.00	11.870	183.730	3372.63	-326.02	-329.41	70.63	40°58'23.376"N	104°20'14.826"W	1.44			
3505.00	12.260	190.230	3465.71	-345.88	-349.16	68.19	40°58'23.180"N	104°20'14.841"W	1.47			
3600.00	12.570	182.060	3558.50	-366.19	-369.42	66.03	40°58'22.980"N	104°20'14.869"W	1.88			
3696.00	12.330	170.650	3651.28	-386.46	-389.77	67.21	40°58'22.778"N	104°20'14.855"W	2.60			
3791.00	12.200	167.870	3746.09	-406.31	-409.50	71.10	40°58'22.581"N	104°20'14.803"W	0.63			
3886.00	12.450	163.010	3837.89	-425.78	-429.49	76.23	40°58'22.388"N	104°20'14.738"W	1.10			
3980.00	11.640	163.300	3929.79	-444.35	-448.35	81.94	40°58'22.200"N	104°20'14.662"W	0.98			
4075.00	11.000	170.830	4022.95	-462.28	-466.48	86.14	40°58'22.021"N	104°20'14.607"W	1.89			
4169.00	9.650	159.260	4115.46	-478.63	-483.08	85.90	40°58'21.857"N	104°20'14.610"W	4.30			
4263.00	9.980	203.550	4208.09	-494.20	-498.20	80.97	40°58'21.707"N	104°20'14.674"W	2.07			

Actual Wellpath Report
 RANDALL CREEK #503-2920H AWP
 Page 3 of 9



REFERENCE WELLPATH IDENTIFICATION			
Operator	FIFTH CREEK ENERGY	Slot	SLOT#03 RANDALL CREEK #503-2920H (250'FSL & 800'FEL, SEC.29)
Area	COLORADO	Well	RANDALL CREEK #503-2920H
Field	WELD COUNTY (NAD 83 / TN)	Wellbore	RANDALL CREEK #503-2920H AWB
Facility	SEC.29-T12N-R62W		

WELLPATH DATA (174 stations)												
MD (ft)	Inclination (°)	Azimuth (°)	TVD (ft)	Vert Sect (ft)	North (ft)	East (ft)	Latitude	Longitude	DLS (ft/100ft)	Comments		
4358.00	8.710	191.571	4301.84	-508.99	-512.89	76.26	40°58'21.563"N	104°20'14.739"W	2.47			
4454.00	7.913	171.613	4396.85	-526.66	-536.47	75.79	40°58'21.428"N	104°20'14.742"W	3.07			
4550.00	6.454	126.998	4492.17	-532.21	-538.25	61.07	40°58'21.311"N	104°20'14.873"W	3.84			
4740.00	0.892	325.998	4681.81	-537.12	-541.59	68.80	40°58'21.280"N	104°20'14.572"W	3.83			
4834.00	1.198	296.818	4776.79	-536.35	-540.48	67.54	40°58'21.290"N	104°20'14.589"W	0.66			
4930.00	1.554	71.814	4871.78	-535.28	-539.63	67.89	40°58'21.298"N	104°20'14.585"W	2.64			
5024.00	0.662	274.667	4965.77	-534.81	-539.19	68.55	40°58'21.302"N	104°20'14.578"W	2.31			
5121.00	1.174	340.998	5059.76	-533.87	-538.29	67.67	40°58'21.312"N	104°20'14.587"W	1.32			
5216.00	1.192	15.018	5157.74	-532.03	-536.36	67.60	40°58'21.330"N	104°20'14.588"W	0.22			
5311.00	1.514	121.613	5252.73	-531.70	-536.08	68.92	40°58'21.333"N	104°20'14.671"W	2.26			
5406.00	0.124	136.174	5347.72	-532.27	-536.81	69.05	40°58'21.306"N	104°20'14.569"W	1.47			
5501.00	1.182	153.623	5442.71	-533.30	-537.76	69.56	40°58'21.317"N	104°20'14.549"W	1.12			
5595.00	0.214	112.188	5538.70	-534.20	-538.69	69.15	40°58'21.307"N	104°20'14.542"W	1.10			
5689.00	0.282	92.251	5633.70	-534.26	-538.78	69.54	40°58'21.307"N	104°20'14.537"W	0.12			
5784.00	0.289	213.243	5728.70	-534.46	-538.97	69.64	40°58'21.305"N	104°20'14.538"W	0.61			
5878.00	0.954	303.443	5819.70	-534.63	-539.13	69.47	40°58'21.303"N	104°20'14.533"W	0.30			
5973.00	0.252	345.354	5914.70	-534.41	-538.99	69.38	40°58'21.305"N	104°20'14.533"W	0.22			
6067.00	0.104	17.348	6008.70	-534.13	-538.63	69.35	40°58'21.308"N	104°20'14.536"W	0.16			
6161.00	0.154	125.244	6102.70	-534.11	-538.61	69.46	40°58'21.308"N	104°20'14.535"W	0.20			
6256.00	0.697	168.644	6197.70	-534.23	-538.73	69.56	40°58'21.307"N	104°20'14.538"W	0.10			
6350.00	0.114	272.378	6291.70	-534.26	-538.76	69.48	40°58'21.306"N	104°20'14.537"W	0.15			
6445.00	0.073	327.728	6386.70	-534.24	-538.73	69.36	40°58'21.307"N	104°20'14.539"W	0.10			
6539.00	0.073	344.1	6480.70	-534.13	-538.62	69.34	40°58'21.308"N	104°20'14.539"W	0.05			
6634.00	0.964	20.994	6575.70	-534.03	-538.52	69.36	40°58'21.309"N	104°20'14.539"W	0.02			
6728.00	0.692	230.251	6669.70	-534.00	-538.49	69.36	40°58'21.309"N	104°20'14.539"W	0.69			
6822.00	0.934	41.874	6763.70	-533.89	-538.49	69.35	40°58'21.309"N	104°20'14.539"W	0.66			
6917.00	2.044	338.141	6858.08	-532.44	-536.99	69.74	40°58'21.325"N	104°20'14.547"W	2.14			
7011.00	10.273	352.851	6952.06	-527.02	-527.02	69.07	40°58'21.423"N	104°20'14.569"W	8.84			
7106.00	17.654	353.231	7044.18	-499.69	-494.16	67.57	40°58'21.648"N	104°20'14.588"W	7.88			
7200.00	26.544	358.681	7131.20	-464.65	-468.88	66.73	40°58'21.997"N	104°20'14.599"W	9.46			



REFERENCE WELLPATH IDENTIFICATION			Slot	SLOT#03 RANDALL CREEK #503-2920H (250'FSL & 800'FEL, SEC.29)
Operator	FIFTH CREEK ENERGY		Well	RANDALL CREEK #503-2920H
Area	COLORADO		Wellbore	RANDALL CREEK #503-2920H AWB
Field	WELD COUNTY (NAD 83 / TN)			
Facility	SEC.29-T12N-R62W			

WELLPATH DATA (174 stations) † = interpolated/extrapolated station													
MD (ft)	Inclination (°)	Asimuth (°)	TVD (ft)	Vert Sect (ft)	North (ft)	East (ft)	Latitude	Longitude	DLB (TMM)	Comments			
7294.00	35.380	2.694	7211.74	-416.38	-420.80	87.60	40°58'22.47"N	104°20'14.588"W	9.63				
7389.00	44.240	3.533	7294.64	-385.62	-359.63	90.94	40°58'23.074"N	104°20'14.545"W	8.34				
7484.00	54.520	4.810	7345.41	-283.61	-287.89	94.07	40°58'23.296"N	104°20'14.528"W	10.93				
7578.00	63.760	2.114	7394.58	-203.01	-207.43	96.70	40°58'24.580"N	104°20'14.469"W	9.84				
7672.00	72.780	2.090	7426.34	-139.79	-149.26	99.87	40°58'26.462"N	104°20'14.426"W	8.60				
7767.00	81.650	3.354	7445.69	-22.80	-22.80	104.20	40°58'28.248"N	104°20'14.371"W	11.95				
7844.00†	86.572	3.972	7456.57	87.75	53.04	109.42	40°58'27.154"N	104°20'14.303"W	3.66	CROSSED 300' SETBACK			
7861.00	87.040	4.080	7456.30	70.73	65.86	110.33	40°58'27.382"N	104°20'14.228"W	3.66				
7885.00	89.560	4.200	7457.01	89.01	84.71	112.07	40°58'27.518"N	104°20'14.269"W	10.51				
7956.00	90.090	3.760	7457.22	186.88	180.74	116.99	40°58'28.218"N	104°20'14.205"W	0.97				
8051.00	90.000	4.640	7457.15	260.68	256.62	121.47	40°58'29.156"N	104°20'14.148"W	2.23				
8146.00	90.460	359.630	7456.77	356.62	350.61	122.52	40°58'30.094"N	104°20'14.133"W	2.17				
8240.00	90.680	359.090	7456.83	449.47	444.60	121.87	40°58'31.032"N	104°20'14.146"W	0.62				
8335.00	90.530	358.730	7454.79	544.26	539.58	119.67	40°58'31.961"N	104°20'14.170"W	0.39				
8430.00	90.550	358.850	7450.88	634.08	634.08	117.68	40°58'32.900"N	104°20'14.196"W	0.13				
8525.00	90.920	359.490	7452.63	733.91	729.53	116.27	40°58'33.838"N	104°20'14.218"W	0.77				
8620.00	90.520	0.350	7451.44	828.80	824.53	116.13	40°58'34.777"N	104°20'14.216"W	1.01				
8716.00	90.520	1.690	7450.57	924.77	920.50	117.84	40°58'35.725"N	104°20'14.194"W	1.40				
8811.00	90.770	2.080	7449.50	1019.70	1015.43	120.37	40°58'36.683"N	104°20'14.155"W	0.49				
8907.00	90.800	2.810	7448.18	1115.74	1111.36	125.35	40°58'37.611"N	104°20'14.098"W	0.87				
9002.00	90.860	3.900	7446.61	1210.72	1206.17	130.79	40°58'38.548"N	104°20'14.025"W	1.04				
9098.00	91.690	4.630	7444.67	1306.65	1301.88	137.63	40°58'39.485"N	104°20'13.932"W	1.15				
9193.00	90.950	4.540	7442.48	1401.56	1396.55	145.52	40°58'40.429"N	104°20'13.833"W	0.78				
9289.00	90.650	3.260	7441.14	1497.50	1492.21	152.05	40°58'41.375"N	104°20'13.748"W	1.37				
9385.00	90.220	1.080	7440.41	1588.61	1588.24	155.88	40°58'42.323"N	104°20'13.700"W	2.31				
9481.00	90.090	358.420	7440.15	1689.38	1684.23	155.28	40°58'43.271"N	104°20'13.708"W	2.77				
9577.00	89.820	357.700	7440.23	1780.10	1780.17	152.01	40°58'44.219"N	104°20'13.748"W	0.80				
9673.00	89.850	356.560	7440.50	1880.68	1876.05	147.21	40°58'45.167"N	104°20'13.811"W	1.19				
9769.00	89.760	357.390	7440.81	1976.23	1971.01	142.14	40°58'46.114"N	104°20'13.877"W	0.87				
9864.00	88.910	1.580	7441.07	2071.08	2066.89	141.29	40°58'47.052"N	104°20'13.868"W	4.41				

Actual Wellpath Report
 RANDALL CREEK #503-2920H AWP
 Page 5 of 9



REFERENCE WELLPATH IDENTIFICATION			
Operator	FIFTH CREEK ENERGY	Slot	SLOT#03 RANDALL CREEK #503-2920H (250'FSL & 800'FEL, SEC.29)
Area	COLORADO	Well	RANDALL CREEK #503-2920H
Field	WELD COUNTY (NAD 83 / TN)	Wellbore	RANDALL CREEK #503-2920H AWB
Facility	SEC.29-T12N-R62W		

WELLPATH DATA (174 stations)												
ID	Inclination [°]	Azimuth [°]	TVD [ft]	Vert Sect [ft]	North [ft]	East [ft]	Latitude	Longitude	DLS [ft/100ft]	Comments		
9990.00	89.800	3.070	741.48	2167.00	2162.80	145.18	40°58'48.000"N	104°20'13.837"W	1.59			
10056.00	89.840	3.389	741.87	2258.05	2258.05	150.58	40°58'48.947"N	104°20'13.767"W	0.48			
10112.00	89.810	2.435	743.98	2309.04	2304.53	155.45	40°58'49.894"N	104°20'13.703"W	0.99			
10248.00	80.000	1.650	744.07	2455.00	2450.46	158.88	40°58'50.842"N	104°20'13.659"W	0.82			
10343.00	88.960	1.170	744.00	2599.04	2594.44	161.20	40°58'51.791"N	104°20'13.628"W	0.81			
10439.00	89.864	2.616	745.11	2646.03	2641.30	164.57	40°58'52.739"N	104°20'13.587"W	1.50			
10535.00	80.124	2.078	744.12	2742.03	2737.30	168.20	40°58'53.678"N	104°20'13.536"W	0.59			
10631.00	89.864	3.015	745.74	2838.03	2833.30	172.44	40°58'54.626"N	104°20'13.480"W	1.02			
10726.00	89.404	4.294	744.70	2933.01	2928.01	178.59	40°58'55.561"N	104°20'13.402"W	1.40			
10822.00	80.000	4.164	744.06	3029.07	3024.25	185.60	40°58'56.507"N	104°20'13.309"W	0.65			
10918.00	80.604	5.894	744.19	3124.00	3119.37	194.07	40°58'57.451"N	104°20'13.200"W	2.01			
11014.00	80.224	4.723	744.21	3220.74	3214.95	202.84	40°58'58.396"N	104°20'13.084"W	1.44			
11109.00	80.404	2.864	744.09	3315.71	3309.75	209.08	40°58'59.332"N	104°20'13.004"W	2.15			
11205.00	80.224	369.790	744.17	3411.68	3405.71	211.18	40°59'00.281"N	104°20'12.977"W	3.03			
11300.00	80.124	369.478	743.89	3506.66	3500.71	210.55	40°59'01.219"N	104°20'12.985"W	0.36			
11396.00	89.874	0.764	743.82	3602.47	3596.71	210.74	40°59'02.168"N	104°20'12.982"W	1.94			
11492.00	89.944	1.244	743.89	3698.44	3692.69	212.41	40°59'03.116"N	104°20'12.960"W	0.50			
11588.00	88.914	1.154	744.00	3794.42	3788.67	214.40	40°59'04.064"N	104°20'12.934"W	0.10			
11684.00	80.000	0.064	744.07	3890.36	3884.66	215.42	40°59'05.011"N	104°20'12.901"W	1.15			
11779.00	89.974	0.644	744.07	3985.29	3979.66	215.90	40°59'05.957"N	104°20'12.874"W	0.82			
11874.00	89.224	1.304	744.33	4080.28	4074.65	217.60	40°59'06.905"N	104°20'12.833"W	0.74			
11969.00	80.000	3.504	744.53	4174.25	4168.56	221.54	40°59'07.816"N	104°20'12.841"W	2.36			
12065.00	89.894	4.804	744.70	4268.21	4262.31	228.34	40°59'08.744"N	104°20'12.753"W	1.43			
12161.00	89.874	7.034	744.104	4363.04	4356.90	238.13	40°59'09.676"N	104°20'12.625"W	2.37			
12257.00	89.768	4.868	744.258	4457.85	4451.27	248.03	40°59'10.611"N	104°20'12.498"W	2.19			
12348.00	89.814	4.868	744.151	4553.79	4546.97	255.60	40°59'11.551"N	104°20'12.397"W	0.55			
12444.00	80.224	1.700	744.40	4649.78	4642.85	260.42	40°59'12.504"N	104°20'12.334"W	2.48			
12539.00	80.000	369.820	744.22	4744.74	4737.83	261.77	40°59'13.443"N	104°20'12.317"W	1.89			
12635.00	89.810	369.234	744.163	4840.61	4833.83	261.65	40°59'14.391"N	104°20'12.326"W	0.81			
12731.00	80.064	368.610	744.199	4936.42	4929.81	259.24	40°59'15.340"N	104°20'12.350"W	0.86			

Actual Wellpath Report
 RANDALL CREEK #503-2920H AWP
 Page 6 of 9



REFERENCE WELLPATH IDENTIFICATION			
Operator	FIFTH CREEK ENERGY	Slot	SLOT#03 RANDALL CREEK #503-2920H (250'FSL & 800'FEL, SEC.29)
Area	COLORADO	Well	RANDALL CREEK #503-2920H
Field	WELD COUNTY (NAD 83 / TN)	Wellbore	RANDALL CREEK #503-2920H AWB
Facility	SEC.29-T12N-R62W		

WELLPATH DATA (174 stations)												
ID	Inclination [°]	Asimuth [°]	TVD [ft]	Vert Sect [ft]	North [ft]	East [ft]	Latitude	Longitude	DLB [ft/100ft]	Comments		
12827.00	80.000	358.290	7441.881	5032.18	5025.77	256.65	40°59'16.288"N	104°20'12.383"W	0.33			
12923.00	89.803	359.578	7441.984	5128.00	5121.75	254.85	40°59'17.238"N	104°20'12.407"W	1.36			
13018.00	89.884	0.975	7442.138	5222.50	5216.25	253.30	40°59'18.175"N	104°20'12.401"W	1.48			
13114.00	80.404	2.654	7441.901	5312.70	5312.70	258.33	40°59'19.123"N	104°20'12.361"W	1.85			
13209.00	80.000	2.603	7441.850	5413.91	5409.60	262.99	40°59'20.000"N	104°20'12.306"W	0.49			
13303.00	89.604	2.224	7441.951	5507.81	5501.50	267.66	40°59'20.968"N	104°20'12.248"W	0.41			
13399.00	80.004	4.578	7442.13	5603.88	5597.30	273.17	40°59'21.838"N	104°20'12.168"W	1.87			
13485.00	80.104	5.203	7442.01	5699.80	5693.30	281.34	40°59'22.885"N	104°20'12.061"W	0.67			
13581.00	80.103	5.254	7441.781	5795.69	5788.55	290.08	40°59'23.824"N	104°20'11.947"W	0.06			
13686.00	80.204	6.110	7441.90	5890.54	5883.08	298.49	40°59'24.758"N	104°20'11.825"W	0.91			
13781.00	80.203	4.874	7441.14	5986.41	5977.84	308.56	40°59'25.693"N	104°20'11.706"W	1.31			
13876.00	80.004	3.854	7440.90	6080.36	6072.36	315.88	40°59'26.629"N	104°20'11.611"W	0.89			
13972.00	89.704	3.218	7441.08	6176.34	6168.17	321.87	40°59'27.575"N	104°20'11.533"W	0.84			
14067.00	80.203	3.150	7441.08	6271.33	6263.02	327.14	40°59'28.513"N	104°20'11.464"W	0.53			
14162.00	80.503	2.889	7440.42	6366.32	6357.89	332.27	40°59'29.450"N	104°20'11.399"W	0.34			
14258.00	80.104	1.934	7440.16	6460.32	6450.85	334.07	40°59'29.874"N	104°20'11.374"W	2.97			
14257.00	80.204	1.894	7439.95	6461.32	6452.81	335.84	40°59'30.388"N	104°20'11.351"W	0.22			
14315.00	80.104	0.710	7439.72	6510.80	6510.80	337.21	40°59'30.981"N	104°20'11.333"W	2.21			
14352.00	80.204	1.315	7439.58	6556.29	6547.78	337.85	40°59'31.355"N	104°20'11.324"W	1.63			
14447.00	80.404	357.894	7439.02	6651.78	6642.77	337.20	40°59'32.268"N	104°20'11.333"W	3.80			
14541.00	80.103	356.404	7438.57	6744.74	6736.65	332.52	40°59'33.192"N	104°20'11.384"W	1.62			
14636.00	80.103	358.854	7438.32	6839.39	6831.56	338.58	40°59'34.130"N	104°20'11.445"W	2.58			
14731.00	80.003	1.623	7438.14	6934.31	6926.55	338.97	40°59'35.069"N	104°20'11.440"W	2.92			
14826.00	80.004	1.884	7438.12	7029.30	7021.51	331.87	40°59'36.007"N	104°20'11.402"W	0.28			
14890.00	80.063	1.288	7438.07	7123.29	7118.47	334.48	40°59'36.935"N	104°20'11.369"W	0.64			
15015.00	80.103	0.333	7437.99	7218.25	7210.46	335.88	40°59'37.874"N	104°20'11.351"W	1.00			
15110.00	89.810	359.390	7437.90	7313.14	7305.46	335.57	40°59'38.812"N	104°20'11.354"W	1.01			
15204.00	89.854	358.898	7438.09	7408.99	7399.45	334.24	40°59'39.741"N	104°20'11.371"W	0.43			
15299.00	89.803	359.194	7438.37	7503.82	7494.44	333.73	40°59'40.682"N	104°20'11.381"W	0.21			
15394.00	89.604	0.500	7438.85	7598.71	7589.43	332.47	40°59'41.618"N	104°20'11.384"W	1.40			



REFERENCE WELLPATH IDENTIFICATION			Slot	SLOT#03 RANDALL CREEK #503-2920H (250'FSL & 800'FEL, SEC.29)
Operator	FIFTH CREEK ENERGY		Well	RANDALL CREEK #503-2920H
Area	COLORADO		Wellbore	RANDALL CREEK #503-2920H AWB
Field	WELD COUNTY (NAD 83 / TN)			
Facility	SEC.29-T12N-R62W			

WELLPATH DATA (174 stations)												
MD (ft)	Inclination (°)	Azimuth (°)	YVD (ft)	Vert Sect (ft)	North (ft)	East (ft)	Latitude	Longitude	DLS ('2000)	Comments		
15457.00	89.632	3.300	7439.27	7650.70	7650.30	334.56	40°59'42.240"N	104°20'11.387"W	4.44			
15584.00	89.603	9.110	7440.12	7786.38	7778.59	348.28	40°59'43.487"N	104°20'11.188"W	4.57			
15679.00	89.916	7.370	7440.53	7880.85	7872.54	362.39	40°59'44.415"N	104°20'11.004"W	1.24			
15774.00	90.000	6.442	7440.53	7975.53	7967.79	374.30	40°59'45.347"N	104°20'10.849"W	1.62			
15869.00	89.989	4.638	7439.96	8070.38	8061.33	383.47	40°59'46.281"N	104°20'10.720"W	2.17			
15964.00	91.516	1.250	7437.41	8165.84	8156.17	390.34	40°59'47.215"N	104°20'10.666"W	3.59			
16058.00	90.032	357.332	7436.15	8259.16	8250.13	397.17	40°59'48.146"N	104°20'10.681"W	4.46			
16153.00	89.948	356.340	7436.17	8353.70	8344.98	393.93	40°59'49.083"N	104°20'10.749"W	1.05			
16249.00	89.488	357.190	7436.66	8449.22	8440.83	378.51	40°59'50.030"N	104°20'10.820"W	1.01			
16343.00	89.454	0.586	7437.84	8545.01	8534.79	374.88	40°59'50.989"N	104°20'10.844"W	3.61			
16437.00	89.974	1.730	7438.01	8639.98	8629.77	375.57	40°59'51.987"N	104°20'10.819"W	1.34			
16531.00	89.918	4.010	7438.11	8734.97	8722.65	381.28	40°59'52.915"N	104°20'10.758"W	2.43			
16625.00	90.000	4.750	7438.19	8824.02	8816.37	386.48	40°59'53.841"N	104°20'10.684"W	0.79			
16720.00	90.121	5.070	7438.09	8919.84	8911.02	398.59	40°59'54.676"N	104°20'10.558"W	0.38			
16815.00	90.969	2.810	7437.94	9014.81	9006.80	402.96	40°59'55.613"N	104°20'10.479"W	2.59			
16910.00	90.534	0.370	7437.20	9109.78	9100.76	405.42	40°59'56.551"N	104°20'10.443"W	2.49			
17005.00	90.000	0.130	7436.44	9204.70	9195.75	405.84	40°59'57.480"N	104°20'10.437"W	0.82			
17099.00	90.000	359.200	7436.31	9298.59	9289.75	405.34	40°59'58.418"N	104°20'10.444"W	0.93			
17194.00	90.000	359.890	7436.19	9393.47	9384.75	404.63	40°59'59.357"N	104°20'10.453"W	0.66			
17288.00	90.152	0.390	7435.99	9487.38	9478.75	404.70	41°00'00.286"N	104°20'10.462"W	0.33			
17383.00	90.468	1.700	7435.49	9582.34	9573.73	405.29	41°00'01.224"N	104°20'10.432"W	1.62			
17477.00	81.798	1.110	7433.64	9676.30	9667.68	408.57	41°00'02.152"N	104°20'10.401"W	1.55			
17540.00	80.850	359.730	7432.24	9769.24	9760.66	409.03	41°00'02.775"N	104°20'10.395"W	2.84	LAST BEA MWD SURVEY		
17644.00	90.652	359.730	7432.03	9763.22	9754.65	408.92	41°00'03.012"N	104°20'10.397"W	0.00	PROJECTION TO BIT		

Actual Wellpath Report
RANDALL CREEK #503-2920H AWP
 Page 8 of 9



REFERENCE WELLPATH IDENTIFICATION			Slot	SLOT#03 RANDALL CREEK #503-2920H (250'FSL & 800'FEL, SEC.29)
Operator	FIFTH CREEK ENERGY		Well	RANDALL CREEK #503-2920H
Area	COLORADO		Wellbore	RANDALL CREEK #503-2920H AWB
Field	WELD COUNTY (NAD 83 / TN)			
Facility	SEC.29-T12N-R62W			

HOLE & CASING SECTIONS - Ref Wellbore: RANDALL CREEK #503-2920H AWB Ref Wellpath: RANDALL CREEK #503-2920H AWP											
String/Diameter	Start MD [ft]	End MD [ft]	Interval [ft]	Start TVD [ft]	End TVD [ft]	Start NS [ft]	Start EW [ft]	End NS [ft]	End EW [ft]		
8.625m Casing Surface	21.00	1527.00	1506.00	21.00	1526.83	0.00	0.00	2.11	0.00	4.13	4.13
8.5in Open Hole	1527.00	17564.00	16037.00	1526.83	7432.03	2.11	4.13	9754.86	408.92		

TARGETS											
Name	TYD [ft]	North [ft]	East [ft]	Grid East [US ft]	Grid North [US ft]	Latitude	Longitude	Shape			
SEC.29-T12N-R62W	4.00	0.00	-25.31	3320935.94	1599809.91	40°58'26.630"N	104°20'16.060"W	polygon			
SEC.29-T12N-R62W (COWY BORDER)	4.00	0.00	-25.31	3320935.94	1599809.91	40°58'26.630"N	104°20'16.060"W	polygon			
SEC.29-T12N-R62W	4.00	0.00	-25.31	3320935.94	1599809.91	40°58'26.630"N	104°20'16.060"W	polygon			
SEC.29-T12N-R62W	7458.00	0.00	-25.31	3320935.94	1599809.91	40°58'26.630"N	104°20'16.060"W	polygon			
SEC.29-T12N-R62W HARDLINES (300'FNL/FSL/FEL/FWL)	7459.00	9754.47	425.55	3321258.93	1600569.79	41°00'03.010"N	104°20'16.180"W	point			
RANDALL CREEK #503-2920H BHL (300'FNL & 700'FEL, SEC.29)	7459.00	50.63	102.02	3321062.61	1599862.16	40°58'27.130"N	104°20'14.400"W	point			

WELLPATH COMPOSITION - Ref Wellbore: RANDALL CREEK #503-2920H AWB Ref Wellpath: RANDALL CREEK #503-2920H AWP				Log Name/Comment	Wellbore
Start MD [ft]	End MD [ft]	Positional Uncertainty Model			
21.00	1498.50	SCWISA MWD, Rev. 4 (Standard)	TOTAL DIRECTIONAL SURVEYS <212.50-1498.50>		RANDALL CREEK #503-2920H AWB
1498.50	17540.00	Custom BH AutoTrack curve (Avali Carr. Short spacing) (Rockies 0.03GT model)	Block Adaptive MGS-HARDLINES <1600-17540>		RANDALL CREEK #503-2920H AWB
17540.00	17564.00	Blind Drilling (std)	Projection to bit		RANDALL CREEK #503-2920H AWB



REFERENCE WELLPATH IDENTIFICATION			
Operator	FIFTH CREEK ENERGY	Slot	SLOT#03 RANDALL CREEK #503-2920H (250'FSL & 800'FEL, SEC.29)
Area	COLORADO	Well	RANDALL CREEK #503-2920H
Field	WELD COUNTY (NAD 83 / TN)	Wellbore	RANDALL CREEK #503-2920H AWB
Facility	SEC.29-T12N-R62W		

WELLPATH COMMENTS					
MD [ft]	Inclination [°]	Azimuth [°]	TVD [ft]		Comment
1498.50	1.100	103.980	1498.33		TIED TO SURFACE SURVEYS
1690.00	1.080	122.730	1599.82		FIRST BHM MWD SURVEY
7940.00	86.375	3.970	7452.07		CROSSED 30' SETBACK
90.650	90.650	359.730	7432.30		LAST BHM MWD SURVEY
17564.00	90.650	359.730	7432.03		PROJECTION TO BIT