

Inspection Photos

01/03/2018

Operator: DECLAR OIL & GAS INC - 23320

Location ID: 404096

Inspection Doc. Number: 682503015

Washington County, CO

Aaron Trujillo
NE Reclamation Specialist
COGCC

Inspection Photos
Operator: DECLAR OIL & GAS INC - 23320
Location ID: 404096



Photo 1: Photo taken from the well location, facing north.



Photo 2: Photo taken from the well location, facing east.

Inspection Photos
Operator: DECLAR OIL & GAS INC - 23320
Location ID: 404096



Photo 3: Photo taken from the well location, facing south.



Photo 4: Photo taken from the well location, facing west.

Inspection Photos
Operator: DECLAR OIL & GAS INC - 23320
Location ID: 404096



Photo 5: Photo taken from the west end of the pit, facing east. Photo shows pit on location. Form 27 #2086957 required operator to sample and submit results, and close pit. Pit has not been closed or reclaimed, and no records that sample results have been submitted.



Photo 6: Photo taken from the west end of the pit, facing northeast. See comments under photo 5.



Photo 7: Photo taken from the north end of the location, facing west. Photo shows a ~50 foot “Propane Storage Tank” remaining on the location. Equipment should have been removed in accordance to 1004.a. COAs for form 27 #2086957 also required removal of equipment.

Inspection Photos
Operator: DECLAR OIL & GAS INC - 23320
Location ID: 404096



Photo 8: Photo taken from the north end of the tank seen in photo 7, facing southwest.



Photo 9: Photo taken from the south end of the tank seen in photo 7, facing north.

Inspection Photos
Operator: DECLAR OIL & GAS INC - 23320
Location ID: 404096



Photo 10: Photo taken from the north end of the location, facing north. Photo shows access road has not been reclaimed in accordance to COGCC 1004.a reclamation requirements. Access road appears to be requiring grading and re-contouring to that of the adjacent reference area. Yellow lines indicate the access road's stormwater ditch running parallel to the road (blue line represents top of access road)

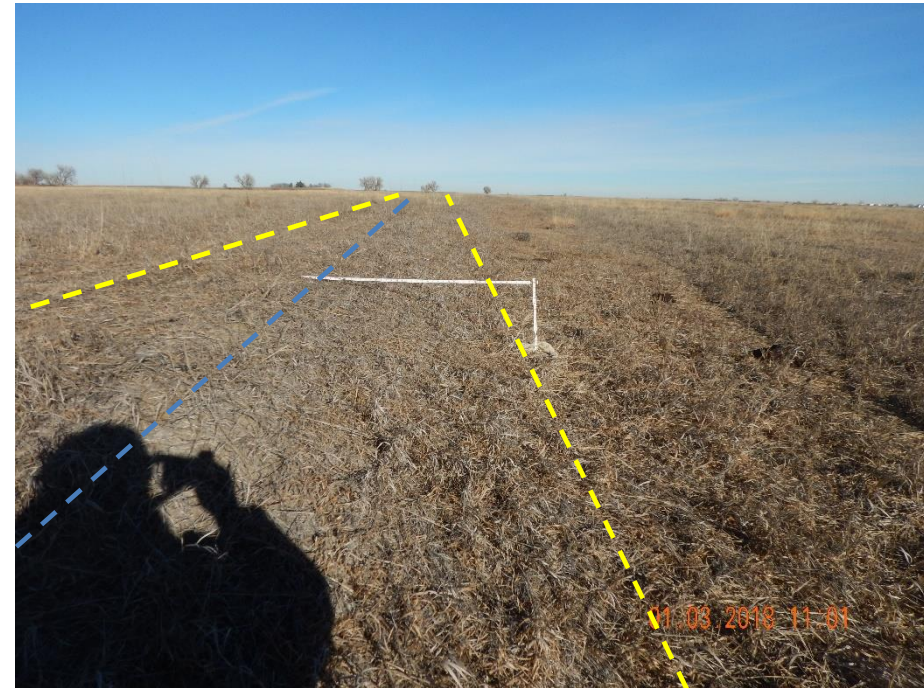


Photo 11: Continued from photo 10. Photo shows access road has not been graded and re-contoured to that of the adjacent reference area. Measuring stick used to provide topographical visual of the access road. Access road measures ~1.5 feet in height from the ditch at this section of the road



Photo 12: Photo taken north of the location, facing south. Photo shows access road. See comments under photo 10.



Photo 13: Photo taken north of the location, facing west. Photo shows access road. See comments under photo 10.



Photo 14: Photo taken from access road, north of the location. Photo shows access road has not been reclaimed and culverts (yellow arrow) have not been removed.



Photo 15: Photo taken from access road, north of the location. Photo shows access road has not been reclaimed and culverts (yellow arrow) have not been removed.

Inspection Photos
Operator: DECLAR OIL & GAS INC - 23320
Location ID: 404096



Photo 16: Photo taken from access road, north of the location, facing west. Photo shows access road has not been reclaimed and culverts (yellow arrow) have not been removed.



Photo 17: Photo taken from the western most end of the access road (where access road ends at the start of an adjacent property) facing west. Photo shows cattle guard equipment has not been removed.

Inspection Photos
Operator: DECLAR OIL & GAS INC - 23320
Location ID: 404096



Photo 18: Continued from photo 17. Photo shows point where the un reclaimed access road ends. Photo also shows cattle guard has not been removed.



Photo 19: Photo taken from the western most end of the access road (where access road ends at the start of an adjacent property) facing east. Photo shows access road has not been reclaimed in accordance to 1004.a

Inspection Photos
Operator: DECLAR OIL & GAS INC - 23320
Location ID: 404096



Photo 20: Historic aerial imagery (1999). Photo shows location of the well, pit and facilities prior to plugging and abandonment.

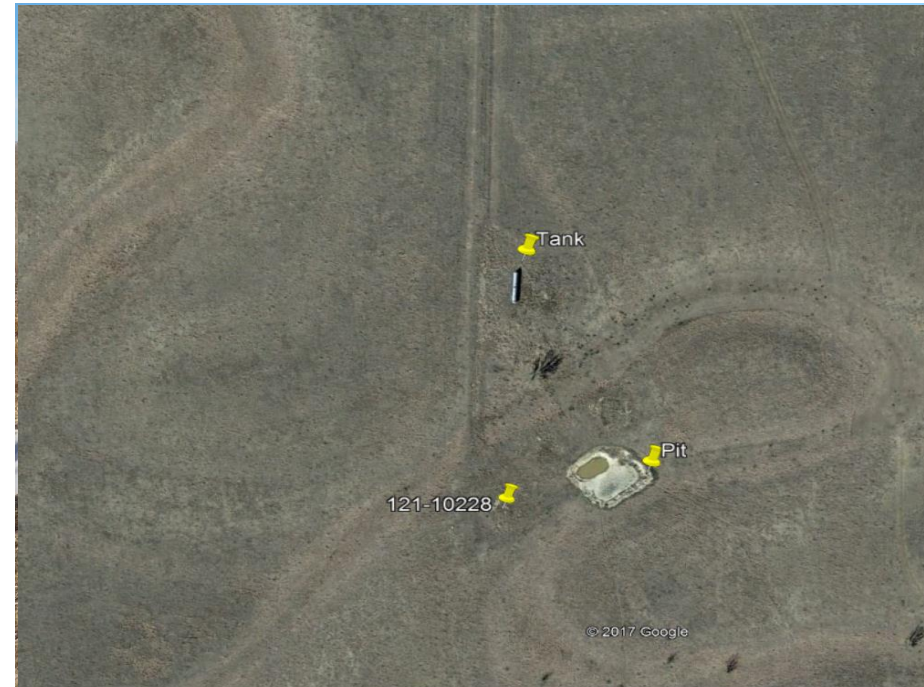


Photo 21: Current available aerial imagery (2016). Photo shows tank and pit seen in photo 21 remains visible. Well was plugged and abandoned on 4/4/2008. All reclamation activities should have been completed by 4/4/2009.

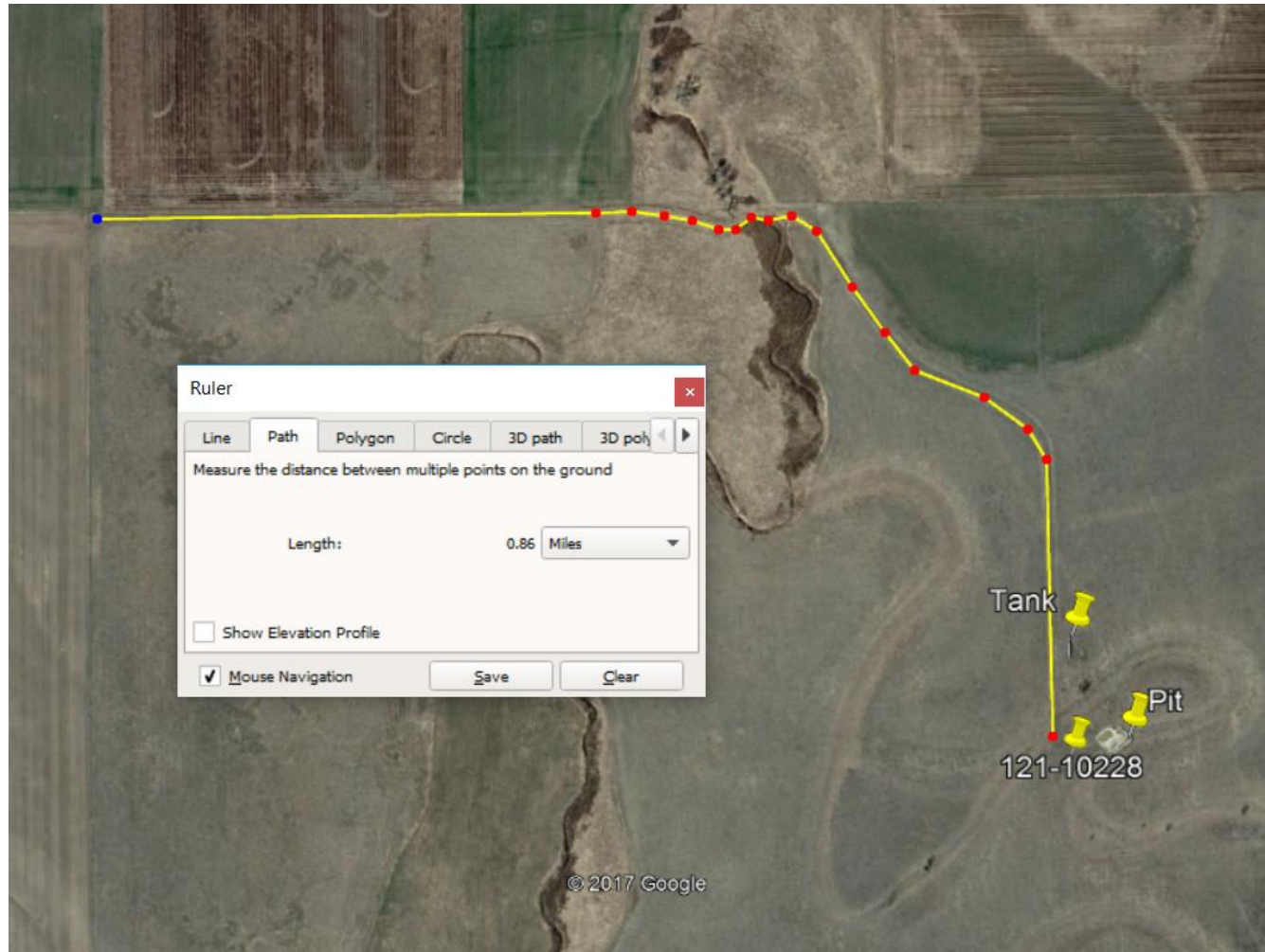


Photo 22: 2016 aerial imagery. Photo shows ~0.86 miles of access road requiring reclamation.