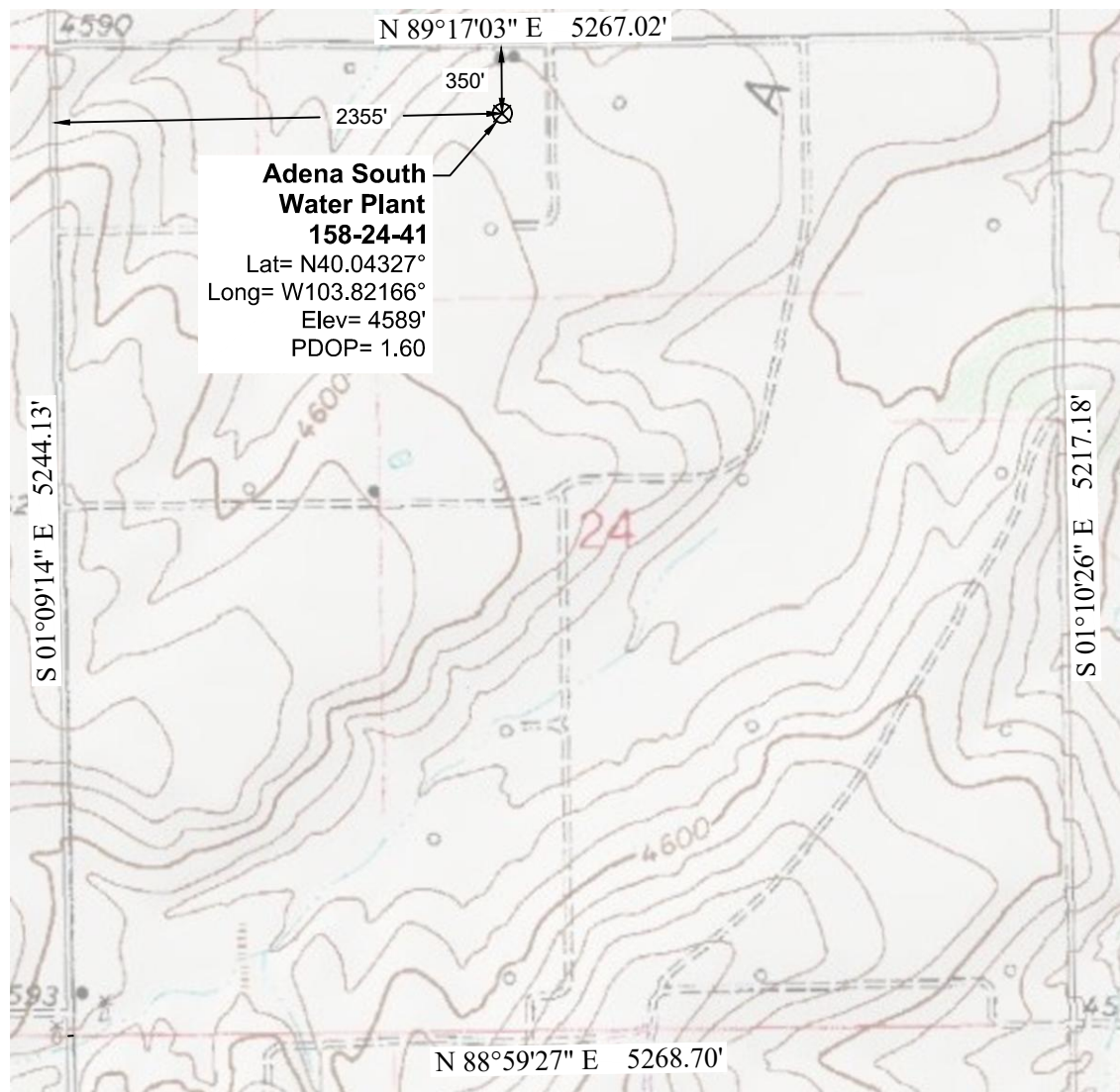


# Topographic Exhibit



## Notes:

- In accordance with a request from PCR Operating LLC, PLS Group has determined the location of the Adena South Water Plant 158-24-41 to be 350' FNL and 2355' FWL as measured perpendicular to the section lines.
- Survey elevations based on NAVD 88 Datum using GPS observed heights and Geoid 12B corrections.
- Distances shown are in SPC grid feet. Ground scale factor= 1.000252455.
- Apparent Land Use is rangeland.
- Vegetation is native grass.
- Topographic map contours and spot elevations based on NGVD 1929 Datum.
- Topographic map dated 1978.

P:\Project\2017\17136\dwg\17136\_Topo.dwg December 15, 2017 - 3:28pm

Well Name: <b>Adena South water Plant 158-24-41</b>	Field Date <b>12.13.2017</b>	Prepared for: <b>Project#: 17136.001</b>  <b>PCR Operating LLC</b>  PLS Group 6843 North Franklin Avenue Loveland, Colorado 80538 970.669.2100 office - 970.669.3652 fax
Section 24-T1N-R58W-6th PM, NE-NW	Party Chief <b>DCB</b>	
Morgan County, Colorado	Proj. Manager <b>ZNB</b>	
	Drawing Date <b>12.18.2017</b>	