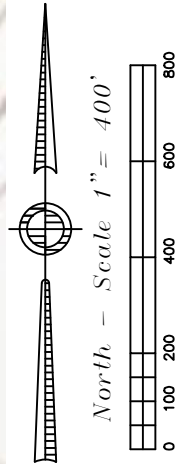
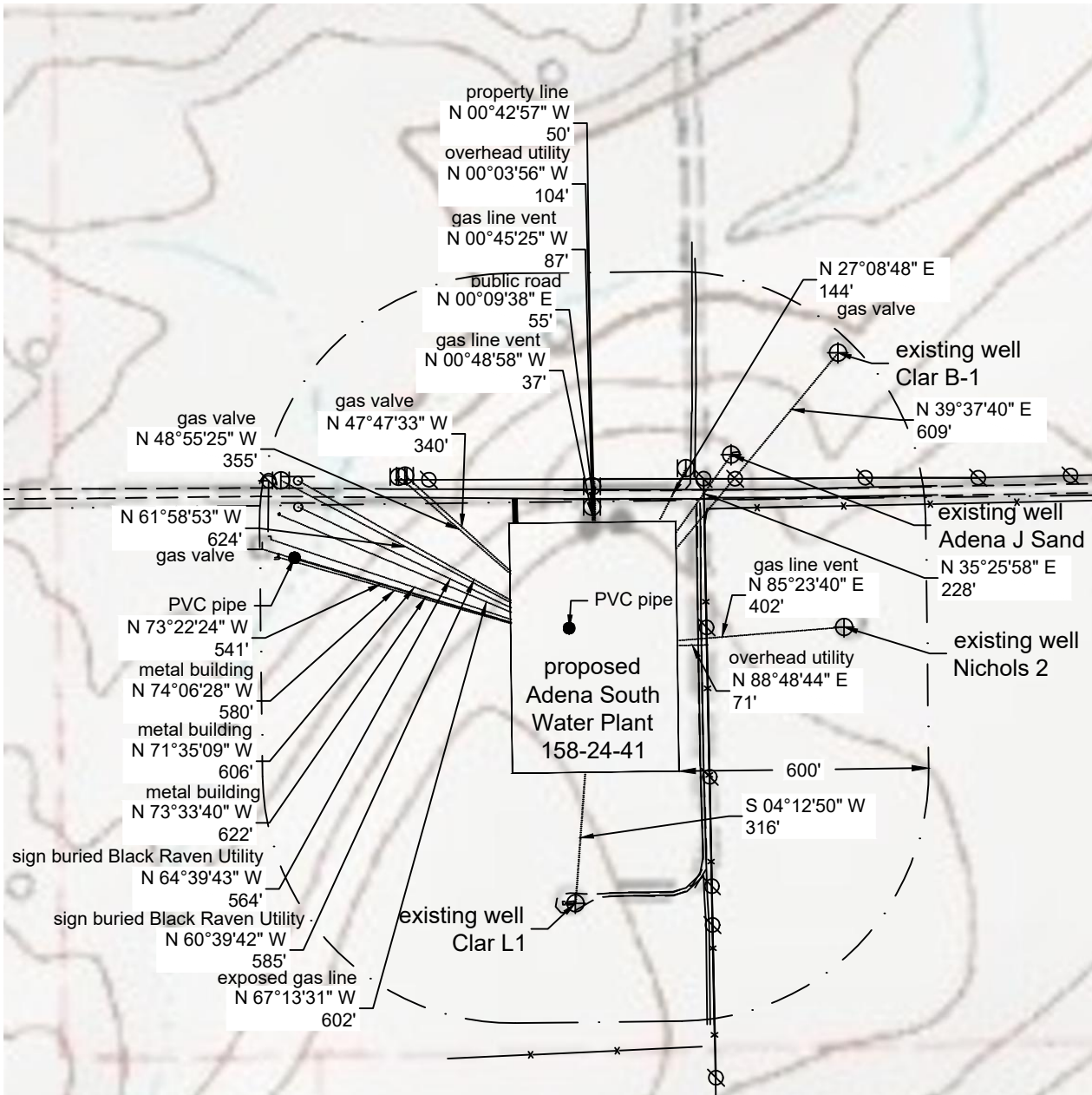


Improvement Location (600')



Distance to nearest:

Building:	2928'
Building Unit:	3068'
High Occupancy Building Unit:	5280'
Designated Outside Activity Area:	5280'
Public Road:	55'
Aboveground Utility:	71'
Railroad:	5280'
Property Line:	50'

P:\Project\2017\17136\dwg\17136_imp 1K.dwg December 19, 2017 - 7:58am

Well Name:

Adena South Water Plant 158-24-41

Field Date
12.13.2017

Party Chief
DCB

Proj. Manager
ZNB

Drawing Date
12.18.2017

Prepared for:

Project#: **17136.001**

PCR Operating LLC

PLS Group

6843 North Franklin Avenue

Loveland, Colorado 80538

970.669.2100 office - 970.669.3652 fax

Section 24-T1N-R58W-6th PM, NE-NW

Morgan County, Colorado