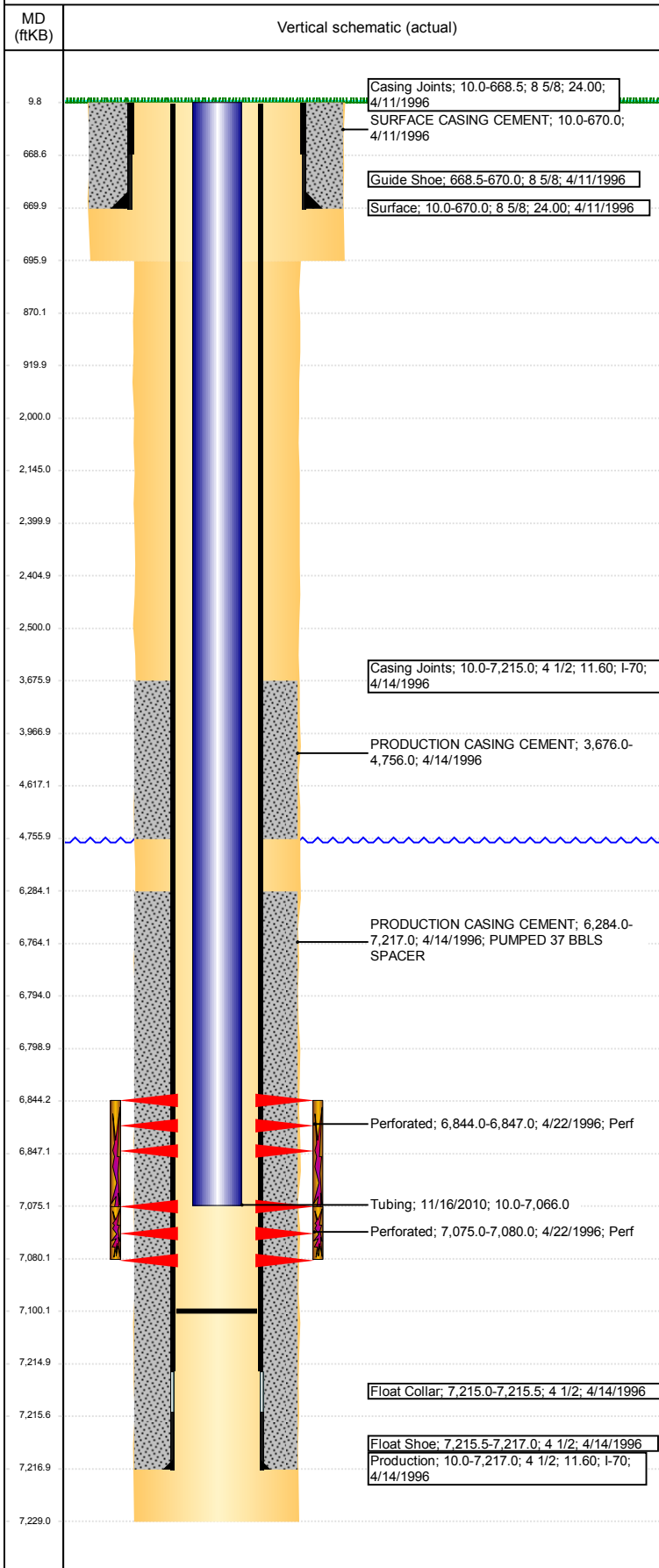


Wellbore Schematic Input Report

Well Name: HSR SARCHET 2-24

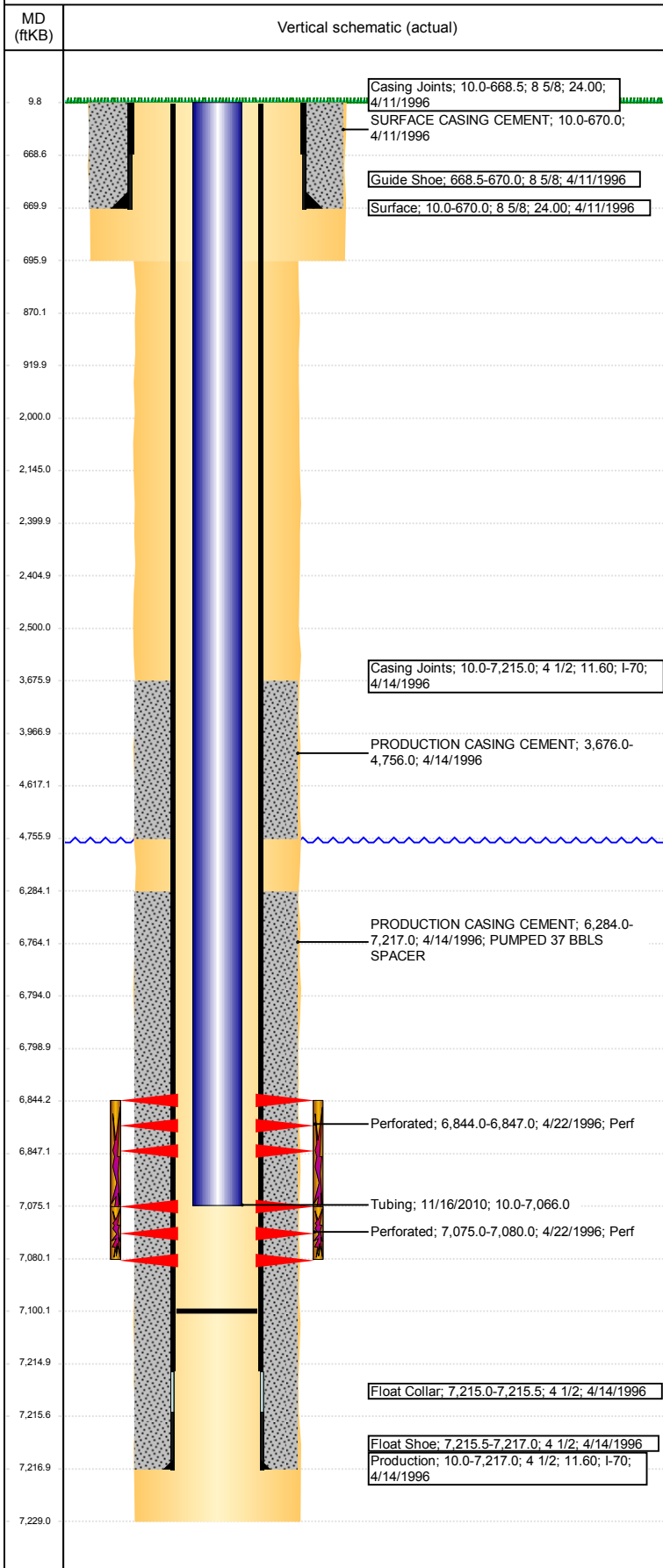
VERTICAL - ORIGINAL HOLE, 1/4/2018 7:40:50 AM



Well Header								
API 05-123-19146	Business Unit DJ BASIN		District 15		Well Config VERTICAL			
Original KB Elevation (ft) 4,834	KB - GL / MSL (ftKB) 10.00		Spud Date 4/10/1996		P & A Date			
Comment								
Directions To Well								
Congressional Location								
Quarter 3 NW	Quarter 4 NE	Section 24	Township 3	Twnshp N/S Dir N	Range 65	Range E/W Dir W		
Bottom Hole Location								
North-South Distance (ft)		From N or S Line		East-West Distance (ft)		From E or W Line		
Plug Back Total Depths								
Date	Depth (ftKB)	Method		Com				
4/14/1996	7,172.0	CASING TALLY		FLOAT COLLAR ON CASING TALLY				
4/22/1996	7,136.0	CASED HOLE LOG		DEPTH LOGGER ON CBL				
10/20/1996	7,100.0	TAG		CLEAN OUT TO LAND TUBING				
Wellbore Sections								
Section Des		Size (in)		Act Top, MD (ftKB)		Act Btm, MD (ftKB)		
SURFACE		12 1/4		10		696		
PRODUCTION		7 7/8		696		7,229		
Zone Statuses								
Zone Name	Status Date	Status	Fluid Type	Job	Prod Method			
CODELL	4/30/1996	PR	Water	DRILLING/CO...	Flowing			
CODELL	9/16/2002	PR		RE-FRAC, 9/6/...				
CODELL	3/27/2014	PR		DRILLING/CO...				
NIOBRARA	4/30/1996	PR	Water		Flowing			
NIOBRARA	3/27/2014	PR						
NIOBRARA	5/9/2017	SI	Water		Flowing			
NIOBRARA-C...	3/27/2014	PR						
Casing Strings								
Surface, 670.0ftKB								
Casing Description Surface	Run Date 4/11/1996	OD (in) 8 5/8	Wt/Len (l... 24.00	Grade	Top, MD (ft... 10.0	MD (ftKB) 670.0		
Production, 7,217.0ftKB								
Casing Description Production	Run Date 4/14/1996	OD (in) 4 1/2	Wt/Len (l... 11.60	Grade I-70	Top, MD (ft... 10.0	MD (ftKB) 7,217.0		
Cement								
Description SURFACE CASING CEMENT				Top Depth (ftKB) 10.0		Bottom Depth (ftKB) 670.0		
Description PRODUCTION CASING CEMENT				Top Depth (ftKB) 3,676.0		Bottom Depth (ftKB) 4,756.0		
Description PRODUCTION CASING CEMENT				Top Depth (ftKB) 6,284.0		Bottom Depth (ftKB) 7,217.0		
Description Dump Bail				Top Depth (ftKB) 6,764.0		Bottom Depth (ftKB) 6,794.0		
Description Balance Plug				Top Depth (ftKB) 3,967.0		Bottom Depth (ftKB) 4,617.0		
Description Casing Repair Cement				Top Depth (ftKB) 2,000.0		Bottom Depth (ftKB) 2,500.0		
Description Cement Plug				Top Depth (ftKB) 2,145.0		Bottom Depth (ftKB) 2,400.0		
Description Cement Plug				Top Depth (ftKB) 2,405.0		Bottom Depth (ftKB) 2,500.0		
Description Shoe Plug				Top Depth (ftKB) 870.0		Bottom Depth (ftKB) 920.0		
Description Shoe Plug				Top Depth (ftKB) 670.0		Bottom Depth (ftKB) 696.0		
Description Shoe Plug				Top Depth (ftKB) 696.0		Bottom Depth (ftKB) 870.0		
Description Shoe Plug				Top Depth (ftKB) 10.0		Bottom Depth (ftKB) 670.0		
Tubing Strings								
Tubing Description Tubing		Run Date 11/16/2010	String... 2 3/8	ID (in)	Wt (lb/ft)	Grade	Len (ft) 7,056.00	Set De...

Well Name: HSR SARCHET 2-24

VERTICAL - ORIGINAL HOLE, 1/4/2018 7:40:51 AM



Tubing Components							
Item Des	OD (in)	Wt (lb/ft)	Grade	Jts	Len (ft)	Btm (ftKB)	Btm (TVD) (ftKB)
EUE 8rd Tubing	2 3/8			227	7,054.00	7,064.0	
Seal Nipple	2 3/8			1	1.00	7,065.0	
Notched collar	2 3/8			1	1.00	7,066.0	

Other In Hole				
Run Date	Des	OD (in)	Top (ftKB)	Btm (ftKB)
8/25/2017	Cement Retainer	4	2,400.0	2,405.0
	Cast Iron Bridge Plug	4	6,794.0	6,799.0

Logs			
Date	Type	Top, MD (ftKB)	Btm, MD (ftKB)
4/14/1996	COMPENSATED DENSITY	4,200.0	7,229.0
4/14/1996	INDUCTION	670.0	7,229.0
4/22/1996	CEMENT BOND	3,600.0	7,130.0
11/17/2014	GYRO	0.0	7,000.0

Perforation Data					
Linked Zone	Bnch/St g	Sum of Entered Shot Total	Top (ftKB)	Btm (ftKB)	Date
NIOBRARA, ORIGINAL HOLE		0	2,500.00	2,500.00	8/25/2017
CODELL, ORIGINAL HOLE		7	6,844.00	6,847.00	4/22/1996
		11	7,075.00	7,080.00	4/22/1996
Total (Sum)		18			

Stimulation Intervals		
Start Date	Primary Job Type	
4/23/1996	DRILLING/COMPLETION - ORIGINAL	
Technical Result	Tech Result Details	Tech Result Note
Comment		
Start Date	Primary Job Type	
9/9/2002	RE-FRAC	
Technical Result	Tech Result Details	Tech Result Note
Comment		