

Location:	COLORADO	Slot:	SLOT#26 STATE NORTH PLATTE K-35-36MRLNB (WELL 5, STATE NORTH PLATTE 0-26 PAD)
Field:	WELD COUNTY	Well:	STATE NORTH PLATTE K-35-36MRLNB
Facility:	SEC.26-T5N-R63W	Wellbore:	STATE NORTH PLATTE K-35-36MRLNB PWB

Location:	COLORADO	Slot:	SLOT#26 STATE NORTH PLATTE K-35-36MRLNB (WELL 5, STATE NORTH PLATTE O-26 PAD)
Field:	WELD COUNTY	Well:	STATE NORTH PLATTE K-35-36MRLNB
Facility:	SEC.26-T5N-R63W	Wellbore:	STATE NORTH PLATTE K-35-36MRLNB PWB

Grid System: NAD83 / Lambert Colorado SP, Northern Zone (501), US feet

True vertical depths are referenced to RIG (4550'GL + 17'RKB) (RKB)

* = Wellpath was transformed from a different geodetic datum

Measured depths are referenced to RIG (4550'GL + 17'RKB) (RKB)

North Reference: True north

RIG (4550'GL + 17'RKB) (RKB) to Mean Sea Level: 4567 feet

Scale: True distance

Mean Sea Level to Mud line (# Slot: SLOT#26 STATE NORTH PLATTE K-35-36MRLNB (WELL 5, STATE NORTH PL

Depths are in feet

Coordinates are in feet referenced to Slot

Created by: ingmjmr on 2017-11-03

Database: Denver

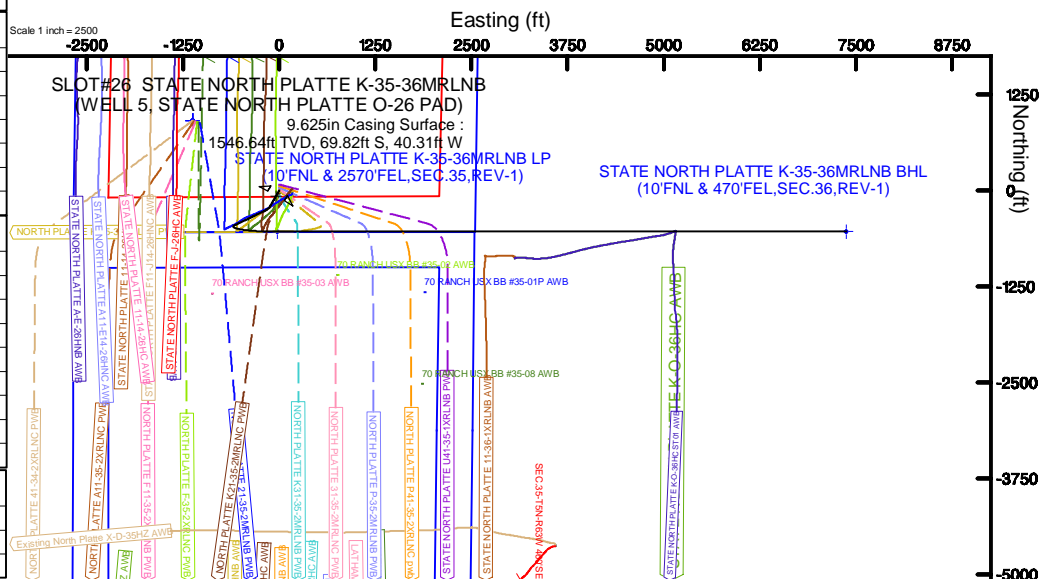
Facility Name				Grid East (US 1)	Grid North (US 1)	Latitude	Longitude
SEC 26-T5N-R25W				330595.838	1381774.535	40°22'34.454"N	104°24'32.436"W
Stn	Local N (F)	Local E (F)	Grid East (US 1)	Grid North (US 1)	Latitude	Longitude	
SLOTHR: STATE NORTH PLATTE K-30-308RLAB (WELL 5, STATE NORTH PLATTE Q-26 PAD)	-4223.39	1608.63	330595.128	1381772.045	40°21'52.109"N	104°24'11.039"W	
R15 (H55G2) + 17R002 (R02) to Mud line (At Stn: SLOTHR: STATE NORTH PLATTE K-30-308RLAB (WELL 5, STATE NORTH PLATTE Q-26 PAD))							456701
Mean Sea Level to Mud line (At Stn: SLOTHR: STATE NORTH PLATTE K-30-308RLAB (WELL 5, STATE NORTH PLATTE Q-26 PAD))							011
R15 (H55G2) + 17R002 (R02) to Mean Sea Level							456701

Design Comment	MD (ft)	Inc (°)	Az (°)	TVD (ft)	Local N (ft)	Local E (ft)	DLS (°/100ft)	VS (ft)
Tie On	17.00	0.000	210.000	17.00	0.00	0.00	0.00	0.00
End of Tangent	500.00	0.000	210.000	500.00	0.00	0.00	0.00	0.00
End of Build	750.00	5.000	210.000	749.68	-9.44	-5.45	2.00	-4.75
End of Tangent	3510.82	5.000	210.000	3500.00	-217.83	-125.76	0.00	-109.65
End of 3D Arc	4087.48	15.315	244.420	4067.24	-272.65	-207.29	2.00	-187.00
End of Tangent	5656.41	15.315	244.420	5580.46	-451.57	-581.06	0.00	-546.83
End of 3D Arc	6694.23	90.000	90.003	6285.00	-534.91	-24.60	10.00	14.21
End of Tangent	14089.52	90.000	90.003	6285.00	-535.25	7370.89	0.00	7390.10

Start MD (ft)	End MD (ft)	Tool	Model	Log Name/Comment	Wellbore
17.00	1550.00	BHI NavTrak	BHI NavTrak (Rotating+Axial Corr)		STATE NORTH PLATTE K-35-36MLNB PWB
1550.00	14099.23	BHI AutoTrak Curve	BHI AutoTrak Curve (Axial Corr, Short spacing)		STATE NORTH PLATTE K-35-36MLNB PWB

MD (ft)	Inc (°)	Az (°)	TVD (ft)	Local N (ft)	Local E (ft)	Grid East (US ft)	Grid North (US ft)	Latitude	Longitude
14089.52	90.000	90.003	6285.00	-535.25	7370.69	3313037.66	1377128.03	40°21'47.429"N	104°22'35.792"W

Hole and Casing Sections										
Name	Start MD (ft)	End MD (ft)	Interval (ft)	Start TVD (ft)	End TVD (ft)	Start Local N (ft)	Start Local E (ft)	End Local N (ft)	End Local E (ft)	Wellbore
9.625in Casing Surface	17.00	1550.00	1533.00	17.00	1546.64	0.00	0.00	-69.82	-40.31	STATE NORTH PLATTE K-35-36MRNB PWB



BGGM (1900.0 to 2019.0) Dip: 66.88° Field: 52369.2 nT
Magnetic North is 8.14 degrees East of True North (at 10/30/2017)

To correct azimuth from Magnetic to True add 8.14 degrees



Planned Wellpath Report

STATE NORTH PLATTE K-35-36MRLNB (REV-A.0) PWP

Page 1 of 8



REFERENCE WELLPATH IDENTIFICATION

Operator	BONANZA CREEK OIL COMPANY	Slot	SLOT#26 STATE NORTH PLATTE K-35-36MRLNB (WELL 5, STATE NORTH PLATTE O-26 PAD)
Area	COLORADO	Well	STATE NORTH PLATTE K-35-36MRLNB
Field	WELD COUNTY	Wellbore	STATE NORTH PLATTE K-35-36MRLNB PWB
Facility	SEC.26-T5N-R63W		

REPORT SETUP INFORMATION

Projection System	NAD83 / Lambert Colorado SP, Northern Zone (501), US feet	Software System	WellArchitect® 5.0
North Reference	True	User	Ingmjmr
Scale	0.999959	Report Generated	11/3/2017 at 7:43:58 AM
Convergence at slot	0.71° East	Database/Source file	Denver/STATE_NORTH_PLATTE_K-35-36MRLNB_REV-A.0_PWP.xml

WELLPATH LOCATION

	Local coordinates		Grid coordinates		Geographic coordinates	
	North[ft]	East[ft]	Easting[US ft]	Northing[US ft]	Latitude	Longitude
Slot Location	-4223.39	1658.63	3305661.23	1377572.05	40°21'52.729"N	104°24'11.009"W
Facility Reference Pt			3303950.84	1381774.54	40°22'34.464"N	104°24'32.436"W
Field Reference Pt			3224525.77	1254425.87	40°01'44.400"N	104°41'53.556"W

WELLPATH DATUM

Calculation method	Minimum curvature	RIG (4550'GL + 17'RKB) (RKB) to Facility Vertical Datum	4567.00ft
Horizontal Reference Pt	Slot	RIG (4550'GL + 17'RKB) (RKB) to Mean Sea Level	4567.00ft
Vertical Reference Pt	RIG (4550'GL + 17'RKB) (RKB)	RIG (4550'GL + 17'RKB) (RKB) to Mud Line at Slot (SLOT#26 STATE NORTH PLATTE K-35-36MRLNB (WELL 5, STATE NORTH PLATTE O-26 PAD))	4567.00ft
MD Reference Pt	RIG (4550'GL + 17'RKB) (RKB)	Section Origin	N 0.00, E 0.00 ft
Field Vertical Reference	Mean Sea Level	Section Azimuth	94.15°



Planned Wellpath Report

STATE NORTH PLATTE K-35-36MRLNB (REV-A.0) PWP

Page 2 of 8



REFERENCE WELLPATH IDENTIFICATION			
Operator	BONANZA CREEK OIL COMPANY	Slot	SLOT#26 STATE NORTH PLATTE K-35-36MRLNB (WELL 5, STATE NORTH PLATTE O-26 PAD)
Area	COLORADO	Well	STATE NORTH PLATTE K-35-36MRLNB
Field	WELD COUNTY	Wellbore	STATE NORTH PLATTE K-35-36MRLNB PWB
Facility	SEC.26-T5N-R63W		

WELLPATH DATA (149 stations) † = interpolated/extrapolated station										
MD [ft]	Inclination [°]	Azimuth [°]	TVD [ft]	Vert Sect [ft]	North [ft]	East [ft]	Latitude	Longitude	DLS [°/100ft]	Comments
0.00†	0.000	210.000	0.00	0.00	0.00	0.00	40°21'52.729"N	104°24'11.009"W	0.00	
17.00	0.000	210.000	17.00	0.00	0.00	0.00	40°21'52.729"N	104°24'11.009"W	0.00	Tie On
117.00†	0.000	210.000	117.00	0.00	0.00	0.00	40°21'52.729"N	104°24'11.009"W	0.00	
217.00†	0.000	210.000	217.00	0.00	0.00	0.00	40°21'52.729"N	104°24'11.009"W	0.00	
317.00†	0.000	210.000	317.00	0.00	0.00	0.00	40°21'52.729"N	104°24'11.009"W	0.00	
417.00†	0.000	210.000	417.00	0.00	0.00	0.00	40°21'52.729"N	104°24'11.009"W	0.00	
500.00	0.000	210.000	500.00	0.00	0.00	0.00	40°21'52.729"N	104°24'11.009"W	0.00	End of Tangent
517.00†	0.340	210.000	517.00	-0.02	-0.04	-0.03	40°21'52.729"N	104°24'11.009"W	2.00	
617.00†	2.340	210.000	616.97	-1.04	-2.07	-1.19	40°21'52.709"N	104°24'11.024"W	2.00	
717.00†	4.340	210.000	716.79	-3.58	-7.11	-4.11	40°21'52.659"N	104°24'11.062"W	2.00	
750.00	5.000	210.000	749.68	-4.75	-9.44	-5.45	40°21'52.636"N	104°24'11.079"W	2.00	End of Build
817.00†	5.000	210.000	816.43	-7.30	-14.50	-8.37	40°21'52.586"N	104°24'11.117"W	0.00	
917.00†	5.000	210.000	916.05	-11.10	-22.05	-12.73	40°21'52.511"N	104°24'11.173"W	0.00	
1017.00†	5.000	210.000	1015.67	-14.90	-29.59	-17.09	40°21'52.437"N	104°24'11.230"W	0.00	
1117.00†	5.000	210.000	1115.29	-18.70	-37.14	-21.44	40°21'52.362"N	104°24'11.286"W	0.00	
1217.00†	5.000	210.000	1214.91	-22.50	-44.69	-25.80	40°21'52.288"N	104°24'11.342"W	0.00	
1317.00†	5.000	210.000	1314.53	-26.30	-52.24	-30.16	40°21'52.213"N	104°24'11.398"W	0.00	
1417.00†	5.000	210.000	1414.14	-30.10	-59.79	-34.52	40°21'52.138"N	104°24'11.455"W	0.00	
1517.00†	5.000	210.000	1513.76	-33.90	-67.33	-38.87	40°21'52.064"N	104°24'11.511"W	0.00	
1617.00†	5.000	210.000	1613.38	-37.70	-74.88	-43.23	40°21'51.989"N	104°24'11.567"W	0.00	
1717.00†	5.000	210.000	1713.00	-41.50	-82.43	-47.59	40°21'51.915"N	104°24'11.624"W	0.00	
1817.00†	5.000	210.000	1812.62	-45.29	-89.98	-51.95	40°21'51.840"N	104°24'11.680"W	0.00	
1917.00†	5.000	210.000	1912.24	-49.09	-97.52	-56.31	40°21'51.765"N	104°24'11.736"W	0.00	
2017.00†	5.000	210.000	2011.86	-52.89	-105.07	-60.66	40°21'51.691"N	104°24'11.792"W	0.00	
2117.00†	5.000	210.000	2111.48	-56.69	-112.62	-65.02	40°21'51.616"N	104°24'11.849"W	0.00	
2217.00†	5.000	210.000	2211.10	-60.49	-120.17	-69.38	40°21'51.542"N	104°24'11.905"W	0.00	
2317.00†	5.000	210.000	2310.72	-64.29	-127.72	-73.74	40°21'51.467"N	104°24'11.961"W	0.00	
2417.00†	5.000	210.000	2410.34	-68.09	-135.26	-78.10	40°21'51.393"N	104°24'12.018"W	0.00	
2517.00†	5.000	210.000	2509.96	-71.89	-142.81	-82.45	40°21'51.318"N	104°24'12.074"W	0.00	
2617.00†	5.000	210.000	2609.58	-75.69	-150.36	-86.81	40°21'51.243"N	104°24'12.130"W	0.00	



Planned Wellpath Report

STATE NORTH PLATTE K-35-36MRLNB (REV-A.0) PWP

Page 3 of 8



REFERENCE WELLPATH IDENTIFICATION			
Operator	BONANZA CREEK OIL COMPANY	Slot	SLOT#26 STATE NORTH PLATTE K-35-36MRLNB (WELL 5, STATE NORTH PLATTE O-26 PAD)
Area	COLORADO	Well	STATE NORTH PLATTE K-35-36MRLNB
Field	WELD COUNTY	Wellbore	STATE NORTH PLATTE K-35-36MRLNB PWB
Facility	SEC.26-T5N-R63W		

WELLPATH DATA (149 stations) † = interpolated/extrapolated station										
MD [ft]	Inclination [°]	Azimuth [°]	TVD [ft]	Vert Sect [ft]	North [ft]	East [ft]	Latitude	Longitude	DLS [°/100ft]	Comments
2717.00†	5.000	210.000	2709.20	-79.49	-157.91	-91.17	40°21'51.169"N	104°24'12.187"W	0.00	
2817.00†	5.000	210.000	2808.82	-83.29	-165.46	-95.53	40°21'51.094"N	104°24'12.243"W	0.00	
2917.00†	5.000	210.000	2908.44	-87.09	-173.00	-99.88	40°21'51.020"N	104°24'12.299"W	0.00	
3017.00†	5.000	210.000	3008.06	-90.89	-180.55	-104.24	40°21'50.945"N	104°24'12.355"W	0.00	
3117.00†	5.000	210.000	3107.68	-94.69	-188.10	-108.60	40°21'50.870"N	104°24'12.412"W	0.00	
3217.00†	5.000	210.000	3207.30	-98.49	-195.65	-112.96	40°21'50.796"N	104°24'12.468"W	0.00	
3317.00†	5.000	210.000	3306.91	-102.29	-203.20	-117.32	40°21'50.721"N	104°24'12.524"W	0.00	
3417.00†	5.000	210.000	3406.53	-106.09	-210.74	-121.67	40°21'50.647"N	104°24'12.581"W	0.00	
3510.82	5.000	210.000	3500.00	-109.65	-217.83	-125.76	40°21'50.577"N	104°24'12.633"W	0.00	End of Tangent
3517.00†	5.083	211.041	3506.15	-109.90	-218.29	-126.04	40°21'50.572"N	104°24'12.637"W	2.00	
3617.00†	6.605	223.919	3605.63	-115.58	-226.23	-132.31	40°21'50.494"N	104°24'12.718"W	2.00	
3717.00†	8.331	231.751	3704.79	-124.61	-234.86	-141.99	40°21'50.408"N	104°24'12.843"W	2.00	
3817.00†	10.157	236.851	3803.48	-136.97	-244.17	-155.06	40°21'50.316"N	104°24'13.012"W	2.00	
3917.00†	12.039	240.391	3901.61	-152.66	-254.14	-171.52	40°21'50.218"N	104°24'13.225"W	2.00	
4017.00†	13.953	242.980	3999.05	-171.65	-264.77	-191.32	40°21'50.113"N	104°24'13.480"W	2.00	
4087.48	15.315	244.420	4067.24	-187.00	-272.65	-207.29	40°21'50.035"N	104°24'13.687"W	2.00	End of 3D Arc
4117.00†	15.315	244.420	4095.71	-193.77	-276.02	-214.32	40°21'50.002"N	104°24'13.778"W	0.00	
4217.00†	15.315	244.420	4192.16	-216.70	-287.42	-238.15	40°21'49.889"N	104°24'14.085"W	0.00	
4317.00†	15.315	244.420	4288.61	-239.64	-298.83	-261.97	40°21'49.776"N	104°24'14.393"W	0.00	
4417.00†	15.315	244.420	4385.06	-262.57	-310.23	-285.79	40°21'49.664"N	104°24'14.701"W	0.00	
4517.00†	15.315	244.420	4481.51	-285.51	-321.63	-309.62	40°21'49.551"N	104°24'15.009"W	0.00	
4617.00†	15.315	244.420	4577.95	-308.44	-333.04	-333.44	40°21'49.438"N	104°24'15.316"W	0.00	
4717.00†	15.315	244.420	4674.40	-331.38	-344.44	-357.26	40°21'49.325"N	104°24'15.624"W	0.00	
4817.00†	15.315	244.420	4770.85	-354.31	-355.85	-381.08	40°21'49.213"N	104°24'15.932"W	0.00	
4917.00†	15.315	244.420	4867.30	-377.24	-367.25	-404.91	40°21'49.100"N	104°24'16.240"W	0.00	
5017.00†	15.315	244.420	4963.75	-400.18	-378.65	-428.73	40°21'48.987"N	104°24'16.547"W	0.00	
5117.00†	15.315	244.420	5060.20	-423.11	-390.06	-452.55	40°21'48.875"N	104°24'16.855"W	0.00	
5217.00†	15.315	244.420	5156.65	-446.05	-401.46	-476.38	40°21'48.762"N	104°24'17.163"W	0.00	
5317.00†	15.315	244.420	5253.10	-468.98	-412.86	-500.20	40°21'48.649"N	104°24'17.471"W	0.00	
5417.00†	15.315	244.420	5349.55	-491.92	-424.27	-524.02	40°21'48.537"N	104°24'17.778"W	0.00	



Planned Wellpath Report

STATE NORTH PLATTE K-35-36MRLNB (REV-A.0) PWP

Page 4 of 8



REFERENCE WELLPATH IDENTIFICATION			
Operator	BONANZA CREEK OIL COMPANY	Slot	SLOT#26 STATE NORTH PLATTE K-35-36MRLNB (WELL 5, STATE NORTH PLATTE O-26 PAD)
Area	COLORADO	Well	STATE NORTH PLATTE K-35-36MRLNB
Field	WELD COUNTY	Wellbore	STATE NORTH PLATTE K-35-36MRLNB PWB
Facility	SEC.26-T5N-R63W		

WELLPATH DATA (149 stations) † = interpolated/extrapolated station										
MD [ft]	Inclination [°]	Azimuth [°]	TVD [ft]	Vert Sect [ft]	North [ft]	East [ft]	Latitude	Longitude	DLS [°/100ft]	Comments
5517.00†	15.315	244.420	5446.00	-514.85	-435.67	-547.85	40°21'48.424"N	104°24'18.086"W	0.00	
5617.00†	15.315	244.420	5542.45	-537.79	-447.08	-571.67	40°21'48.311"N	104°24'18.394"W	0.00	
5656.41	15.315	244.420	5580.46	-546.83	-451.57	-581.06	40°21'48.267"N	104°24'18.515"W	0.00	End of Tangent
5717.00†	10.239	229.113	5639.54	-557.59	-458.56	-592.36	40°21'48.198"N	104°24'18.661"W	10.00	
5817.00†	7.116	161.296	5738.61	-561.47	-470.27	-597.10	40°21'48.082"N	104°24'18.722"W	10.00	
5917.00†	13.982	118.355	5837.00	-548.01	-481.91	-584.45	40°21'47.967"N	104°24'18.559"W	10.00	
6017.00†	23.226	105.998	5931.70	-517.62	-493.11	-554.79	40°21'47.856"N	104°24'18.176"W	10.00	
6117.00†	32.899	100.535	6019.86	-471.21	-503.53	-509.02	40°21'47.753"N	104°24'17.585"W	10.00	
6217.00†	42.711	97.362	6098.78	-410.21	-512.87	-448.53	40°21'47.661"N	104°24'16.803"W	10.00	
6317.00†	52.583	95.193	6166.07	-336.45	-520.83	-375.16	40°21'47.583"N	104°24'15.855"W	10.00	
6417.00†	62.485	93.534	6219.68	-252.19	-527.17	-291.14	40°21'47.520"N	104°24'14.770"W	10.00	
6517.00†	72.404	92.152	6258.00	-159.98	-531.71	-199.02	40°21'47.475"N	104°24'13.580"W	10.00	
6617.00†	82.331	90.915	6279.84	-62.63	-534.29	-101.60	40°21'47.449"N	104°24'12.321"W	10.00	
6694.23	90.000	90.003	6285.00†	14.21	-534.91	-24.60	40°21'47.443"N	104°24'11.327"W	10.00	End of 3D Arc
6717.00†	90.000	90.003	6285.00	36.92	-534.91	-1.83	40°21'47.443"N	104°24'11.032"W	0.00	
6817.00†	90.000	90.003	6285.00	136.66	-534.91	98.17	40°21'47.443"N	104°24'09.741"W	0.00	
6917.00†	90.000	90.003	6285.00	236.39	-534.92	198.17	40°21'47.443"N	104°24'08.449"W	0.00	
7017.00†	90.000	90.003	6285.00	336.13	-534.92	298.17	40°21'47.443"N	104°24'07.157"W	0.00	
7117.00†	90.000	90.003	6285.00	435.87	-534.93	398.17	40°21'47.443"N	104°24'05.865"W	0.00	
7217.00†	90.000	90.003	6285.00	535.61	-534.93	498.17	40°21'47.443"N	104°24'04.573"W	0.00	
7317.00†	90.000	90.003	6285.00	635.34	-534.94	598.17	40°21'47.443"N	104°24'03.281"W	0.00	
7417.00†	90.000	90.003	6285.00	735.08	-534.94	698.17	40°21'47.443"N	104°24'01.990"W	0.00	
7517.00†	90.000	90.003	6285.00	834.82	-534.95	798.17	40°21'47.443"N	104°24'00.698"W	0.00	
7617.00†	90.000	90.003	6285.00	934.56	-534.95	898.17	40°21'47.443"N	104°23'59.406"W	0.00	
7717.00†	90.000	90.003	6285.00	1034.29	-534.95	998.17	40°21'47.443"N	104°23'58.114"W	0.00	
7817.00†	90.000	90.003	6285.00	1134.03	-534.96	1098.17	40°21'47.443"N	104°23'56.822"W	0.00	
7917.00†	90.000	90.003	6285.00	1233.77	-534.96	1198.17	40°21'47.443"N	104°23'55.530"W	0.00	
8017.00†	90.000	90.003	6285.00	1333.51	-534.97	1298.17	40°21'47.442"N	104°23'54.239"W	0.00	
8117.00†	90.000	90.003	6285.00	1433.25	-534.97	1398.17	40°21'47.442"N	104°23'52.947"W	0.00	
8217.00†	90.000	90.003	6285.00	1532.98	-534.98	1498.17	40°21'47.442"N	104°23'51.655"W	0.00	



Planned Wellpath Report

STATE NORTH PLATTE K-35-36MRLNB (REV-A.0) PWP

Page 5 of 8



REFERENCE WELLPATH IDENTIFICATION			
Operator	BONANZA CREEK OIL COMPANY	Slot	SLOT#26 STATE NORTH PLATTE K-35-36MRLNB (WELL 5, STATE NORTH PLATTE O-26 PAD)
Area	COLORADO	Well	STATE NORTH PLATTE K-35-36MRLNB
Field	WELD COUNTY	Wellbore	STATE NORTH PLATTE K-35-36MRLNB PWB
Facility	SEC.26-T5N-R63W		

WELLPATH DATA (149 stations) † = interpolated/extrapolated station										
MD [ft]	Inclination [°]	Azimuth [°]	TVD [ft]	Vert Sect [ft]	North [ft]	East [ft]	Latitude	Longitude	DLS [°/100ft]	Comments
8317.00†	90.000	90.003	6285.00	1632.72	-534.98	1598.17	40°21'47.442"N	104°23'50.363"W	0.00	
8417.00†	90.000	90.003	6285.00	1732.46	-534.99	1698.17	40°21'47.442"N	104°23'49.071"W	0.00	
8517.00†	90.000	90.003	6285.00	1832.20	-534.99	1798.17	40°21'47.442"N	104°23'47.779"W	0.00	
8617.00†	90.000	90.003	6285.00	1931.93	-535.00	1898.17	40°21'47.442"N	104°23'46.488"W	0.00	
8717.00†	90.000	90.003	6285.00	2031.67	-535.00	1998.17	40°21'47.442"N	104°23'45.196"W	0.00	
8817.00†	90.000	90.003	6285.00	2131.41	-535.01	2098.17	40°21'47.442"N	104°23'43.904"W	0.00	
8917.00†	90.000	90.003	6285.00	2231.15	-535.01	2198.17	40°21'47.441"N	104°23'42.612"W	0.00	
9017.00†	90.000	90.003	6285.00	2330.88	-535.02	2298.17	40°21'47.441"N	104°23'41.320"W	0.00	
9117.00†	90.000	90.003	6285.00	2430.62	-535.02	2398.17	40°21'47.441"N	104°23'40.028"W	0.00	
9217.00†	90.000	90.003	6285.00	2530.36	-535.02	2498.17	40°21'47.441"N	104°23'38.737"W	0.00	
9317.00†	90.000	90.003	6285.00	2630.10	-535.03	2598.17	40°21'47.441"N	104°23'37.445"W	0.00	
9417.00†	90.000	90.003	6285.00	2729.84	-535.03	2698.17	40°21'47.441"N	104°23'36.153"W	0.00	
9517.00†	90.000	90.003	6285.00	2829.57	-535.04	2798.17	40°21'47.441"N	104°23'34.861"W	0.00	
9617.00†	90.000	90.003	6285.00	2929.31	-535.04	2898.17	40°21'47.440"N	104°23'33.569"W	0.00	
9717.00†	90.000	90.003	6285.00	3029.05	-535.05	2998.17	40°21'47.440"N	104°23'32.277"W	0.00	
9817.00†	90.000	90.003	6285.00	3128.79	-535.05	3098.17	40°21'47.440"N	104°23'30.986"W	0.00	
9917.00†	90.000	90.003	6285.00	3228.52	-535.06	3198.17	40°21'47.440"N	104°23'29.694"W	0.00	
10017.00†	90.000	90.003	6285.00	3328.26	-535.06	3298.17	40°21'47.440"N	104°23'28.402"W	0.00	
10117.00†	90.000	90.003	6285.00	3428.00	-535.07	3398.17	40°21'47.440"N	104°23'27.110"W	0.00	
10217.00†	90.000	90.003	6285.00	3527.74	-535.07	3498.17	40°21'47.439"N	104°23'25.818"W	0.00	
10317.00†	90.000	90.003	6285.00	3627.48	-535.08	3598.17	40°21'47.439"N	104°23'24.526"W	0.00	
10417.00†	90.000	90.003	6285.00	3727.21	-535.08	3698.17	40°21'47.439"N	104°23'23.235"W	0.00	
10517.00†	90.000	90.003	6285.00	3826.95	-535.09	3798.17	40°21'47.439"N	104°23'21.943"W	0.00	
10617.00†	90.000	90.003	6285.00	3926.69	-535.09	3898.17	40°21'47.439"N	104°23'20.651"W	0.00	
10717.00†	90.000	90.003	6285.00	4026.43	-535.10	3998.17	40°21'47.438"N	104°23'19.359"W	0.00	
10817.00†	90.000	90.003	6285.00	4126.16	-535.10	4098.17	40°21'47.438"N	104°23'18.067"W	0.00	
10917.00†	90.000	90.003	6285.00	4225.90	-535.10	4198.17	40°21'47.438"N	104°23'16.775"W	0.00	
11017.00†	90.000	90.003	6285.00	4325.64	-535.11	4298.17	40°21'47.438"N	104°23'15.484"W	0.00	
11117.00†	90.000	90.003	6285.00	4425.38	-535.11	4398.17	40°21'47.437"N	104°23'14.192"W	0.00	
11217.00†	90.000	90.003	6285.00	4525.11	-535.12	4498.17	40°21'47.437"N	104°23'12.900"W	0.00	



Planned Wellpath Report

STATE NORTH PLATTE K-35-36MRLNB (REV-A.0) PWP

Page 6 of 8



REFERENCE WELLPATH IDENTIFICATION			
Operator	BONANZA CREEK OIL COMPANY	Slot	SLOT#26 STATE NORTH PLATTE K-35-36MRLNB (WELL 5, STATE NORTH PLATTE O-26 PAD)
Area	COLORADO	Well	STATE NORTH PLATTE K-35-36MRLNB
Field	WELD COUNTY	Wellbore	STATE NORTH PLATTE K-35-36MRLNB PWB
Facility	SEC.26-T5N-R63W		

WELLPATH DATA (149 stations) † = interpolated/extrapolated station										
MD [ft]	Inclination [°]	Azimuth [°]	TVD [ft]	Vert Sect [ft]	North [ft]	East [ft]	Latitude	Longitude	DLS [°/100ft]	Comments
11317.00†	90.000	90.003	6285.00	4624.85	-535.12	4598.17	40°21'47.437"N	104°23'11.608"W	0.00	
11417.00†	90.000	90.003	6285.00	4724.59	-535.13	4698.17	40°21'47.437"N	104°23'10.316"W	0.00	
11517.00†	90.000	90.003	6285.00	4824.33	-535.13	4798.17	40°21'47.437"N	104°23'09.024"W	0.00	
11617.00†	90.000	90.003	6285.00	4924.07	-535.14	4898.17	40°21'47.436"N	104°23'07.733"W	0.00	
11717.00†	90.000	90.003	6285.00	5023.80	-535.14	4998.17	40°21'47.436"N	104°23'06.441"W	0.00	
11817.00†	90.000	90.003	6285.00	5123.54	-535.15	5098.17	40°21'47.436"N	104°23'05.149"W	0.00	
11917.00†	90.000	90.003	6285.00	5223.28	-535.15	5198.17	40°21'47.436"N	104°23'03.857"W	0.00	
12017.00†	90.000	90.003	6285.00	5323.02	-535.16	5298.17	40°21'47.435"N	104°23'02.565"W	0.00	
12117.00†	90.000	90.003	6285.00	5422.75	-535.16	5398.17	40°21'47.435"N	104°23'01.273"W	0.00	
12217.00†	90.000	90.003	6285.00	5522.49	-535.17	5498.17	40°21'47.435"N	104°22'59.982"W	0.00	
12317.00†	90.000	90.003	6285.00	5622.23	-535.17	5598.17	40°21'47.435"N	104°22'58.690"W	0.00	
12417.00†	90.000	90.003	6285.00	5721.97	-535.17	5698.17	40°21'47.434"N	104°22'57.398"W	0.00	
12517.00†	90.000	90.003	6285.00	5821.70	-535.18	5798.17	40°21'47.434"N	104°22'56.106"W	0.00	
12617.00†	90.000	90.003	6285.00	5921.44	-535.18	5898.17	40°21'47.434"N	104°22'54.814"W	0.00	
12717.00†	90.000	90.003	6285.00	6021.18	-535.19	5998.17	40°21'47.433"N	104°22'53.522"W	0.00	
12817.00†	90.000	90.003	6285.00	6120.92	-535.19	6098.17	40°21'47.433"N	104°22'52.231"W	0.00	
12917.00†	90.000	90.003	6285.00	6220.66	-535.20	6198.17	40°21'47.433"N	104°22'50.939"W	0.00	
13017.00†	90.000	90.003	6285.00	6320.39	-535.20	6298.17	40°21'47.433"N	104°22'49.647"W	0.00	
13117.00†	90.000	90.003	6285.00	6420.13	-535.21	6398.17	40°21'47.432"N	104°22'48.355"W	0.00	
13217.00†	90.000	90.003	6285.00	6519.87	-535.21	6498.17	40°21'47.432"N	104°22'47.063"W	0.00	
13317.00†	90.000	90.003	6285.00	6619.61	-535.22	6598.17	40°21'47.432"N	104°22'45.771"W	0.00	
13417.00†	90.000	90.003	6285.00	6719.34	-535.22	6698.17	40°21'47.431"N	104°22'44.480"W	0.00	
13517.00†	90.000	90.003	6285.00	6819.08	-535.23	6798.17	40°21'47.431"N	104°22'43.188"W	0.00	
13617.00†	90.000	90.003	6285.00	6918.82	-535.23	6898.17	40°21'47.431"N	104°22'41.896"W	0.00	
13717.00†	90.000	90.003	6285.00	7018.56	-535.24	6998.17	40°21'47.430"N	104°22'40.604"W	0.00	
13817.00†	90.000	90.003	6285.00	7118.29	-535.24	7098.17	40°21'47.430"N	104°22'39.312"W	0.00	
13917.00†	90.000	90.003	6285.00	7218.03	-535.25	7198.17	40°21'47.430"N	104°22'38.020"W	0.00	
14017.00†	90.000	90.003	6285.00	7317.77	-535.25	7298.17	40°21'47.429"N	104°22'36.729"W	0.00	
14089.52	90.000	90.003	6285.00 ²	7390.10	-535.25	7370.69	40°21'47.429"N	104°22'35.792"W	0.00	End of Tangent

HOLE & CASING SECTIONS

- Ref Wellbore: STATE NORTH PLATTE K-35-36MRLNB PWB

Ref Wellpath: STATE NORTH PLATTE K-35-36MRLNB (REV-A.0) PWP

String/Diameter	Start MD [ft]	End MD [ft]	Interval [ft]	Start TVD [ft]	End TVD [ft]	Start N/S [ft]	Start E/W [ft]	End N/S [ft]	End E/W [ft]
9.625in Casing Surface	17.00	1550.00	1533.00	17.00	1546.64	0.00	0.00	-69.82	-40.31

TARGETS

Name	MD [ft]	TVD [ft]	North [ft]	East [ft]	Grid East [US ft]	Grid North [US ft]	Latitude	Longitude	Shape
SEC.26-T05N-R63W		-19.00	4182.84	-1534.12	3304075.56	1381735.41	40°22'34.062"N	104°24'30.831"W	polygon
SEC.02-T4N-R63W		-5.00	911.89	-1124.10	3304525.98	1378469.93	40°22'01.740"N	104°24'25.531"W	polygon
SEC.35-T5N-R63W		-5.00	911.89	-1124.10	3304525.98	1378469.93	40°22'01.740"N	104°24'25.531"W	polygon
2) STATE NORTH PLATTE K-35-36MRLNB BHL (10'FNL & 470'FEL,SEC.36,REV-1)	14089.52	6285.00	-535.25	7370.69	3313037.66	1377128.03	40°21'47.429"N	104°22'35.792"W	point
1) STATE NORTH PLATTE K-35-36MRLNB LP (10'FNL & 2570'FEL,SEC.35,REV-1)	6694.23	6285.00	-534.91	-24.60	3305643.25	1377036.90	40°21'47.443"N	104°24'11.327"W	point
SEC.02-T4N-R63W 460'SETBACK		6539.00	911.89	-1124.10	3304525.98	1378469.93	40°22'01.740"N	104°24'25.531"W	polygon
SEC.26-T05N-R63W 460' SETBACK		6539.00	4182.84	-1534.12	3304075.56	1381735.41	40°22'34.062"N	104°24'30.831"W	polygon
SEC.35-T5N-R63W 460'SETBACK		6539.00	911.89	-1124.10	3304525.98	1378469.93	40°22'01.740"N	104°24'25.531"W	polygon



Planned Wellpath Report

STATE NORTH PLATTE K-35-36MRLNB (REV-A.0) PWP

Page 7 of 8



REFERENCE WELLPATH IDENTIFICATION			
Operator	BONANZA CREEK OIL COMPANY	Slot	SLOT#26 STATE NORTH PLATTE K-35-36MRLNB (WELL 5, STATE NORTH PLATTE O-26 PAD)
Area	COLORADO	Well	STATE NORTH PLATTE K-35-36MRLNB
Field	WELD COUNTY	Wellbore	STATE NORTH PLATTE K-35-36MRLNB PWB
Facility	SEC.26-T5N-R63W		

SURVEY PROGRAM -				
Ref Wellbore: STATE NORTH PLATTE K-35-36MRLNB PWB Ref Wellpath: STATE NORTH PLATTE K-35-36MRLNB (REV-A.0) PWP				
Start MD [ft]	End MD [ft]	Positional Uncertainty Model	Log Name/Comment	Wellbore
17.00	1550.00	BHI NaviTrak (Rotating+Axial Corr)		STATE NORTH PLATTE K-35-36MRLNB PWB
1550.00	14099.23	BHI AutoTrak Curve (Axial Corr, Short spacing)		STATE NORTH PLATTE K-35-36MRLNB PWB



Planned Wellpath Report

STATE NORTH PLATTE K-35-36MRLNB (REV-A.0) PWP

Page 8 of 8



REFERENCE WELLPATH IDENTIFICATION				
Operator	BONANZA CREEK OIL COMPANY	Slot	SLOT#26 STATE NORTH PLATTE K-35-36MRLNB (WELL 5, STATE NORTH PLATTE O-26 PAD)	
Area	COLORADO	Well	STATE NORTH PLATTE K-35-36MRLNB	
Field	WELD COUNTY	Wellbore	STATE NORTH PLATTE K-35-36MRLNB PWB	
Facility	SEC.26-T5N-R63W			

DESIGN COMMENTS				
MD [ft]	Inclination [°]	Azimuth [°]	TVD [ft]	Comment
17.00	0.000	210.000	17.00	Tie On
500.00	0.000	210.000	500.00	End of Tangent
750.00	5.000	210.000	749.68	End of Build
3510.82	5.000	210.000	3500.00	End of Tangent
4087.48	15.315	244.420	4067.24	End of 3D Arc
5656.41	15.315	244.420	5580.46	End of Tangent
6694.23	90.000	90.003	6285.00	End of 3D Arc
14089.52	90.000	90.003	6285.00	End of Tangent