

# BONANZA CREEK OIL COMPANY

Location: COLORADO Slot: SLOT#25 NORTH PLATTE K-35-34MRLNB (WELL 6,STATE NORTH PLATTE O-26 PAD)  
Field: WELD COUNTY Well: NORTH PLATTE K-35-34MRLNB  
Facility: SEC.26-T5N-R63W Wellbore: NORTH PLATTE K-35-34MRLNB PWB

|  |  |
|--|--|
| Plot reference wellpath is NORTH PLATTE K-35-34MRLNB (REV-A.0) PWP   | Grid System: NAD83 / Lambert Colorado SP, Northern Zone (501), US feet |
| True vertical depths are referenced to RIG (4550'GL + 17'RXB) (RKB)  | * = Wellpath was transformed from a different geodetic datum           |
| Measured depths are referenced to RIG (4550'GL + 17'RXB) (RKB)   | North Reference: True north  |
| RIG (4550'GL + 17'RXB) (RKB) to Mean Sea Level: 4567 feet  | Scale: True distance   |
| Mean Sea Level to Mud line (At Slot: SLOT#25 NORTH PLATTE K-35-34MRLNB (WELL 6,STATE NORTH PLATTE O-26 PAD)): 0 feet | Depths are in feet   |
| Coordinates are in feet referenced to Slot   | Created by: ingnjamm on 2017-11-03                                     |
|  | Database: Owner  |

## Location Information

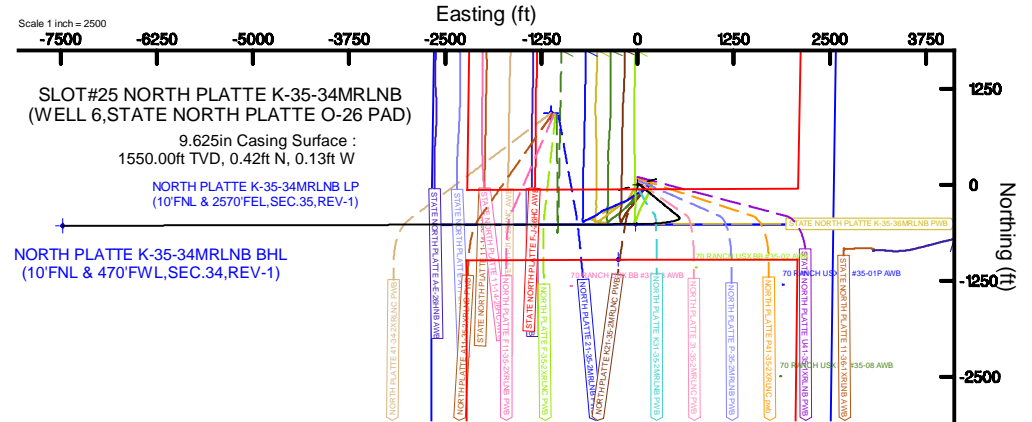
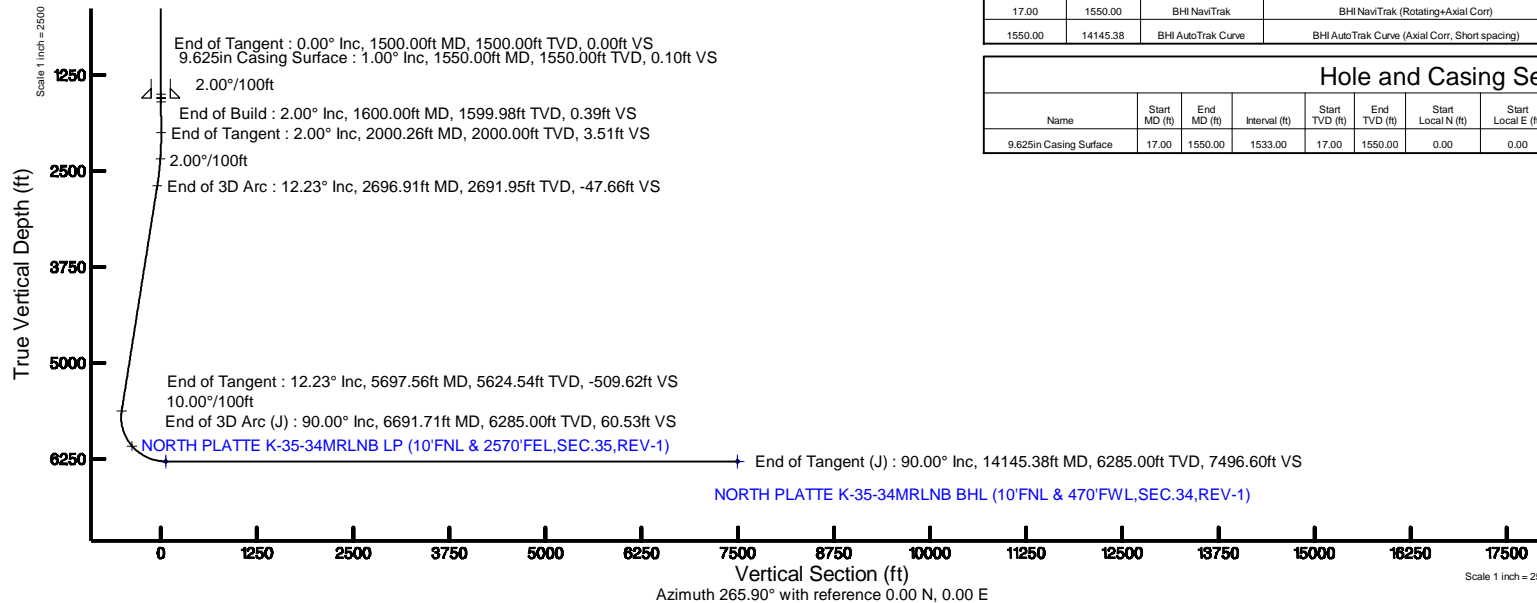
|  |              |              |  |                   |                    |                |                 |
|--|--------------|--------------|--|-------------------|--------------------|----------------|-----------------|
| Facility Name  |              |              |  | Grid East (US ft) | Grid North (US ft) | Latitude       | Longitude       |
| SEC.26-T5N-R63W  |              |              |  | 330360.838        | 1381774.536        | 40°22'34.464"N | 104°24'32.436"W |
| Slot   | Local N (ft) | Local E (ft) |  | Grid East (US ft) | Grid North (US ft) | Latitude       | Longitude       |
| SLOT#25 NORTH PLATTE K-35-34MRLNB (WELL 6,STATE NORTH PLATTE O-26 PAD)   | -4243.43     | 1657.79      |  | 3305660.640       | 1377552.004        | 40°21'52.531"N | 104°24'11.020"W |
| RIG (4550'GL + 17'RXB) (RKB) to Mud line (At Slot: SLOT#25 NORTH PLATTE K-35-34MRLNB (WELL 6,STATE NORTH PLATTE O-26 PAD)) |              |              |  |                   |                    | 4567ft         |                 |
| Mean Sea Level to Mud line (At Slot: SLOT#25 NORTH PLATTE K-35-34MRLNB (WELL 6,STATE NORTH PLATTE O-26 PAD))               |              |              |  |                   |                    | 0ft            |                 |
| RIG (4550'GL + 17'RXB) (RKB) to Mean Sea Level   |              |              |  |                   |                    | 4567ft         |                 |

## Well Profile Data

| Design Comment     | MD (ft)  | Inc (°) | Az (°)  | TVD (ft) | Local N (ft) | Local E (ft) | DLS (°/100ft) | VS (ft) |
|--------------------|----------|---------|---------|----------|--------------|--------------|---------------|---------|
| Tie On             | 17.00    | 0.000   | 343.000 | 17.00    | 0.00         | 0.00         | 0.00          | 0.00    |
| End of Tangent     | 1500.00  | 0.000   | 343.000 | 1500.00  | 0.00         | 0.00         | 0.00          | 0.00    |
| End of Build       | 1600.00  | 2.000   | 343.000 | 1599.98  | 1.67         | -0.51        | 2.00          | 0.39    |
| End of Tangent     | 2000.26  | 2.000   | 343.000 | 2000.00  | 15.03        | -4.59        | 0.00          | 3.51    |
| End of 3D Arc      | 2696.91  | 12.226  | 129.264 | 2691.95  | -20.21       | 49.23        | 2.00          | -47.66  |
| End of Tangent     | 5697.56  | 12.226  | 129.264 | 5624.54  | -422.38      | 541.21       | 0.00          | -509.62 |
| End of 3D Arc (J)  | 6691.71  | 90.000  | 269.836 | 6285.00  | -514.88      | -23.76       | 10.00         | 60.53   |
| End of Tangent (J) | 14145.38 | 90.000  | 269.836 | 6285.00  | -536.18      | -7477.41     | 0.00          | 7496.60 |

## Bottom Hole Location

| MD (ft)  | Inc (°) | Az (°)  | TVD (ft) | Local N (ft) | Local E (ft) | Grid East (US ft) | Grid North (US ft) | Latitude       | Longitude       |
|----------|---------|---------|----------|--------------|--------------|-------------------|--------------------|----------------|-----------------|
| 14145.38 | 90.000  | 269.836 | 6285.00  | -536.18      | -7477.41     | 3298190.76        | 1376923.40         | 40°21'47.222"N | 104°25'47.615"W |



## Survey Program

| Start MD (ft) | End MD (ft) | Tool               | Model  | Log Name/Comment | Wellbore                      |
|---------------|-------------|--------------------|--|------------------|-------------------------------|
| 17.00         | 1550.00     | BHI NavTrak        | BHI NavTrak (Rotating+Axial Corr)              |                  | NORTH PLATTE K-35-34MRLNB PWB |
| 1550.00       | 14145.38    | BHI AutoTrak Curve | BHI AutoTrak Curve (Axial Corr, Short spacing) |                  | NORTH PLATTE K-35-34MRLNB PWB |

## Hole and Casing Sections

| Name                   | Start MD (ft) | End MD (ft) | Interval (ft) | Start TVD (ft) | End TVD (ft) | Start Local N (ft) | Start Local E (ft) | End Local N (ft) | End Local E (ft) | Wellbore                      |
|------------------------|---------------|-------------|---------------|----------------|--------------|--------------------|--------------------|------------------|------------------|-------------------------------|
| 9.625in Casing Surface | 17.00         | 1550.00     | 1533.00       | 17.00          | 1550.00      | 0.00               | 0.00               | 0.42             | -0.13            | NORTH PLATTE K-35-34MRLNB PWB |



BGGM (1900.0 to 2019.0) Dip: 66.88° Field: 52369.2 nT  
Magnetic North is 8.14 degrees East of True North (at 10/30/2017)

To correct azimuth from Magnetic to True add 8.14 degrees



# Planned Wellpath Report

## NORTH PLATTE K-35-34MRLNB (REV-A.0) PWP

Page 1 of 8



### REFERENCE WELLPATH IDENTIFICATION

|          |                           |          |  |
|----------|---------------------------|----------|--|
| Operator | BONANZA CREEK OIL COMPANY | Slot     | SLOT#25 NORTH PLATTE K-35-34MRLNB (WELL 6,STATE NORTH PLATTE O-26 PAD) |
| Area     | COLORADO                  | Well     | NORTH PLATTE K-35-34MRLNB  |
| Field    | WELD COUNTY               | Wellbore | NORTH PLATTE K-35-34MRLNB PWB  |
| Facility | SEC.26-T5N-R63W           |          |  |

### REPORT SETUP INFORMATION

|                     |   |                      |  |
|---------------------|---|----------------------|--|
| Projection System   | NAD83 / Lambert Colorado SP, Northern Zone (501), US feet | Software System      | WellArchitect® 5.0                                 |
| North Reference     | True  | User                 | Ingmjmr  |
| Scale               | 0.999959  | Report Generated     | 11/3/2017 at 7:43:49 AM                            |
| Convergence at slot | 0.71° East  | Database/Source file | Denver/NORTH_PLATTE_K-35-34MRLNB__REV-A.0__PWP.xml |

### WELLPATH LOCATION

|                       | Local coordinates |          | Grid coordinates |                 | Geographic coordinates |                 |
|-----------------------|-------------------|----------|------------------|-----------------|------------------------|-----------------|
|                       | North[ft]         | East[ft] | Easting[US ft]   | Northing[US ft] | Latitude               | Longitude       |
| Slot Location         | -4243.43          | 1657.79  | 3305660.64       | 1377552.00      | 40°21'52.531"N         | 104°24'11.020"W |
| Facility Reference Pt |                   |          | 3303950.84       | 1381774.54      | 40°22'34.464"N         | 104°24'32.436"W |
| Field Reference Pt    |                   |          | 3224525.77       | 1254425.87      | 40°01'44.400"N         | 104°41'53.556"W |

### WELLPATH DATUM

|                          |                              |   |                   |
|--------------------------|------------------------------|---|-------------------|
| Calculation method       | Minimum curvature            | RIG (4550'GL + 17'RKB) (RKB) to Facility Vertical Datum   | 4567.00ft         |
| Horizontal Reference Pt  | Slot                         | RIG (4550'GL + 17'RKB) (RKB) to Mean Sea Level  | 4567.00ft         |
| Vertical Reference Pt    | RIG (4550'GL + 17'RKB) (RKB) | RIG (4550'GL + 17'RKB) (RKB) to Mud Line at Slot (SLOT#25 NORTH PLATTE K-35-34MRLNB (WELL 6,STATE NORTH PLATTE O-26 PAD)) | 4567.00ft         |
| MD Reference Pt          | RIG (4550'GL + 17'RKB) (RKB) | Section Origin  | N 0.00, E 0.00 ft |
| Field Vertical Reference | Mean Sea Level               | Section Azimuth   | 265.90°           |



# Planned Wellpath Report

## NORTH PLATTE K-35-34MRLNB (REV-A.0) PWP

Page 2 of 8



| REFERENCE WELLPATH IDENTIFICATION |                           |          |  |
|-----------------------------------|---------------------------|----------|--|
| Operator                          | BONANZA CREEK OIL COMPANY | Slot     | SLOT#25 NORTH PLATTE K-35-34MRLNB (WELL 6,STATE NORTH PLATTE O-26 PAD) |
| Area                              | COLORADO                  | Well     | NORTH PLATTE K-35-34MRLNB  |
| Field                             | WELD COUNTY               | Wellbore | NORTH PLATTE K-35-34MRLNB PWB  |
| Facility                          | SEC.26-T5N-R63W           |          |  |

| WELLPATH DATA (150 stations) † = interpolated/extrapolated station |                    |                |             |                   |               |              |                |                 |                  |                |
|--|--------------------|----------------|-------------|-------------------|---------------|--------------|----------------|-----------------|------------------|----------------|
| MD<br>[ft]   | Inclination<br>[°] | Azimuth<br>[°] | TVD<br>[ft] | Vert Sect<br>[ft] | North<br>[ft] | East<br>[ft] | Latitude       | Longitude       | DLS<br>[°/100ft] | Comments       |
| 0.00†  | 0.000              | 343.000        | 0.00        | 0.00              | 0.00          | 0.00         | 40°21'52.531"N | 104°24'11.020"W | 0.00             |                |
| 17.00  | 0.000              | 343.000        | 17.00       | 0.00              | 0.00          | 0.00         | 40°21'52.531"N | 104°24'11.020"W | 0.00             | Tie On         |
| 117.00†  | 0.000              | 343.000        | 117.00      | 0.00              | 0.00          | 0.00         | 40°21'52.531"N | 104°24'11.020"W | 0.00             |                |
| 217.00†  | 0.000              | 343.000        | 217.00      | 0.00              | 0.00          | 0.00         | 40°21'52.531"N | 104°24'11.020"W | 0.00             |                |
| 317.00†  | 0.000              | 343.000        | 317.00      | 0.00              | 0.00          | 0.00         | 40°21'52.531"N | 104°24'11.020"W | 0.00             |                |
| 417.00†  | 0.000              | 343.000        | 417.00      | 0.00              | 0.00          | 0.00         | 40°21'52.531"N | 104°24'11.020"W | 0.00             |                |
| 517.00†  | 0.000              | 343.000        | 517.00      | 0.00              | 0.00          | 0.00         | 40°21'52.531"N | 104°24'11.020"W | 0.00             |                |
| 617.00†  | 0.000              | 343.000        | 617.00      | 0.00              | 0.00          | 0.00         | 40°21'52.531"N | 104°24'11.020"W | 0.00             |                |
| 717.00†  | 0.000              | 343.000        | 717.00      | 0.00              | 0.00          | 0.00         | 40°21'52.531"N | 104°24'11.020"W | 0.00             |                |
| 817.00†  | 0.000              | 343.000        | 817.00      | 0.00              | 0.00          | 0.00         | 40°21'52.531"N | 104°24'11.020"W | 0.00             |                |
| 917.00†  | 0.000              | 343.000        | 917.00      | 0.00              | 0.00          | 0.00         | 40°21'52.531"N | 104°24'11.020"W | 0.00             |                |
| 1017.00†   | 0.000              | 343.000        | 1017.00     | 0.00              | 0.00          | 0.00         | 40°21'52.531"N | 104°24'11.020"W | 0.00             |                |
| 1117.00†   | 0.000              | 343.000        | 1117.00     | 0.00              | 0.00          | 0.00         | 40°21'52.531"N | 104°24'11.020"W | 0.00             |                |
| 1217.00†   | 0.000              | 343.000        | 1217.00     | 0.00              | 0.00          | 0.00         | 40°21'52.531"N | 104°24'11.020"W | 0.00             |                |
| 1317.00†   | 0.000              | 343.000        | 1317.00     | 0.00              | 0.00          | 0.00         | 40°21'52.531"N | 104°24'11.020"W | 0.00             |                |
| 1417.00†   | 0.000              | 343.000        | 1417.00     | 0.00              | 0.00          | 0.00         | 40°21'52.531"N | 104°24'11.020"W | 0.00             |                |
| 1500.00  | 0.000              | 343.000        | 1500.00     | 0.00              | 0.00          | 0.00         | 40°21'52.531"N | 104°24'11.020"W | 0.00             | End of Tangent |
| 1517.00†   | 0.340              | 343.000        | 1517.00     | 0.01              | 0.05          | -0.01        | 40°21'52.532"N | 104°24'11.020"W | 2.00             |                |
| 1600.00  | 2.000              | 343.000        | 1599.98     | 0.39              | 1.67          | -0.51        | 40°21'52.548"N | 104°24'11.026"W | 2.00             | End of Build   |
| 1617.00†   | 2.000              | 343.000        | 1616.97     | 0.52              | 2.24          | -0.68        | 40°21'52.553"N | 104°24'11.028"W | 0.00             |                |
| 1717.00†   | 2.000              | 343.000        | 1716.91     | 1.30              | 5.57          | -1.70        | 40°21'52.586"N | 104°24'11.042"W | 0.00             |                |
| 1817.00†   | 2.000              | 343.000        | 1816.85     | 2.08              | 8.91          | -2.72        | 40°21'52.619"N | 104°24'11.055"W | 0.00             |                |
| 1917.00†   | 2.000              | 343.000        | 1916.79     | 2.86              | 12.25         | -3.74        | 40°21'52.652"N | 104°24'11.068"W | 0.00             |                |
| 2000.26  | 2.000              | 343.000        | 2000.00     | 3.51              | 15.03         | -4.59        | 40°21'52.680"N | 104°24'11.079"W | 0.00             | End of Tangent |
| 2017.00†   | 1.716              | 348.469        | 2016.73     | 3.61              | 15.55         | -4.73        | 40°21'52.685"N | 104°24'11.081"W | 2.00             |                |
| 2117.00†   | 1.141              | 74.885         | 2116.70     | 2.82              | 17.28         | -4.07        | 40°21'52.702"N | 104°24'11.072"W | 2.00             |                |
| 2217.00†   | 2.767              | 113.123        | 2216.65     | -0.30             | 16.59         | -0.89        | 40°21'52.695"N | 104°24'11.031"W | 2.00             |                |
| 2317.00†   | 4.692              | 121.787        | 2316.43     | -5.76             | 13.49         | 4.81         | 40°21'52.664"N | 104°24'10.957"W | 2.00             |                |
| 2417.00†   | 6.661              | 125.382        | 2415.94     | -13.55            | 7.97          | 13.02        | 40°21'52.610"N | 104°24'10.851"W | 2.00             |                |
| 2517.00†   | 8.644              | 127.338        | 2515.04     | -23.66            | 0.06          | 23.72        | 40°21'52.532"N | 104°24'10.713"W | 2.00             |                |



# Planned Wellpath Report

## NORTH PLATTE K-35-34MRLNB (REV-A.0) PWP

Page 3 of 8



| REFERENCE WELLPATH IDENTIFICATION |                           |          |  |
|-----------------------------------|---------------------------|----------|--|
| Operator                          | BONANZA CREEK OIL COMPANY | Slot     | SLOT#25 NORTH PLATTE K-35-34MRLNB (WELL 6,STATE NORTH PLATTE O-26 PAD) |
| Area                              | COLORADO                  | Well     | NORTH PLATTE K-35-34MRLNB  |
| Field                             | WELD COUNTY               | Wellbore | NORTH PLATTE K-35-34MRLNB PWB  |
| Facility                          | SEC.26-T5N-R63W           |          |  |

| WELLPATH DATA (150 stations) † = interpolated/extrapolated station |                    |                |             |                   |               |              |                |                 |                  |               |
|--|--------------------|----------------|-------------|-------------------|---------------|--------------|----------------|-----------------|------------------|---------------|
| MD<br>[ft]   | Inclination<br>[°] | Azimuth<br>[°] | TVD<br>[ft] | Vert Sect<br>[ft] | North<br>[ft] | East<br>[ft] | Latitude       | Longitude       | DLS<br>[°/100ft] | Comments      |
| 2617.00†   | 10.634             | 128.567        | 2613.62     | -36.08            | -10.25        | 36.91        | 40°21'52.430"N | 104°24'10.543"W | 2.00             |               |
| 2696.91  | 12.226             | 129.264        | 2691.95     | -47.66            | -20.21        | 49.23        | 40°21'52.332"N | 104°24'10.384"W | 2.00             | End of 3D Arc |
| 2717.00†   | 12.226             | 129.264        | 2711.58     | -50.75            | -22.90        | 52.52        | 40°21'52.305"N | 104°24'10.341"W | 0.00             |               |
| 2817.00†   | 12.226             | 129.264        | 2809.31     | -66.15            | -36.30        | 68.92        | 40°21'52.172"N | 104°24'10.129"W | 0.00             |               |
| 2917.00†   | 12.226             | 129.264        | 2907.05     | -81.54            | -49.70        | 85.31        | 40°21'52.040"N | 104°24'09.917"W | 0.00             |               |
| 3017.00†   | 12.226             | 129.264        | 3004.78     | -96.94            | -63.11        | 101.71       | 40°21'51.908"N | 104°24'09.706"W | 0.00             |               |
| 3117.00†   | 12.226             | 129.264        | 3102.51     | -112.33           | -76.51        | 118.11       | 40°21'51.775"N | 104°24'09.494"W | 0.00             |               |
| 3217.00†   | 12.226             | 129.264        | 3200.24     | -127.73           | -89.91        | 134.50       | 40°21'51.643"N | 104°24'09.282"W | 0.00             |               |
| 3317.00†   | 12.226             | 129.264        | 3297.97     | -143.12           | -103.31       | 150.90       | 40°21'51.510"N | 104°24'09.070"W | 0.00             |               |
| 3417.00†   | 12.226             | 129.264        | 3395.70     | -158.52           | -116.72       | 167.29       | 40°21'51.378"N | 104°24'08.858"W | 0.00             |               |
| 3517.00†   | 12.226             | 129.264        | 3493.44     | -173.91           | -130.12       | 183.69       | 40°21'51.245"N | 104°24'08.647"W | 0.00             |               |
| 3617.00†   | 12.226             | 129.264        | 3591.17     | -189.31           | -143.52       | 200.09       | 40°21'51.113"N | 104°24'08.435"W | 0.00             |               |
| 3717.00†   | 12.226             | 129.264        | 3688.90     | -204.70           | -156.93       | 216.48       | 40°21'50.980"N | 104°24'08.223"W | 0.00             |               |
| 3817.00†   | 12.226             | 129.264        | 3786.63     | -220.10           | -170.33       | 232.88       | 40°21'50.848"N | 104°24'08.011"W | 0.00             |               |
| 3917.00†   | 12.226             | 129.264        | 3884.36     | -235.49           | -183.73       | 249.27       | 40°21'50.716"N | 104°24'07.799"W | 0.00             |               |
| 4017.00†   | 12.226             | 129.264        | 3982.10     | -250.89           | -197.13       | 265.67       | 40°21'50.583"N | 104°24'07.588"W | 0.00             |               |
| 4117.00†   | 12.226             | 129.264        | 4079.83     | -266.29           | -210.54       | 282.07       | 40°21'50.451"N | 104°24'07.376"W | 0.00             |               |
| 4217.00†   | 12.226             | 129.264        | 4177.56     | -281.68           | -223.94       | 298.46       | 40°21'50.318"N | 104°24'07.164"W | 0.00             |               |
| 4317.00†   | 12.226             | 129.264        | 4275.29     | -297.08           | -237.34       | 314.86       | 40°21'50.186"N | 104°24'06.952"W | 0.00             |               |
| 4417.00†   | 12.226             | 129.264        | 4373.02     | -312.47           | -250.74       | 331.25       | 40°21'50.053"N | 104°24'06.740"W | 0.00             |               |
| 4517.00†   | 12.226             | 129.264        | 4470.76     | -327.87           | -264.15       | 347.65       | 40°21'49.921"N | 104°24'06.528"W | 0.00             |               |
| 4617.00†   | 12.226             | 129.264        | 4568.49     | -343.26           | -277.55       | 364.05       | 40°21'49.789"N | 104°24'06.317"W | 0.00             |               |
| 4717.00†   | 12.226             | 129.264        | 4666.22     | -358.66           | -290.95       | 380.44       | 40°21'49.656"N | 104°24'06.105"W | 0.00             |               |
| 4817.00†   | 12.226             | 129.264        | 4763.95     | -374.05           | -304.36       | 396.84       | 40°21'49.524"N | 104°24'05.893"W | 0.00             |               |
| 4917.00†   | 12.226             | 129.264        | 4861.68     | -389.45           | -317.76       | 413.23       | 40°21'49.391"N | 104°24'05.681"W | 0.00             |               |
| 5017.00†   | 12.226             | 129.264        | 4959.42     | -404.84           | -331.16       | 429.63       | 40°21'49.259"N | 104°24'05.469"W | 0.00             |               |
| 5117.00†   | 12.226             | 129.264        | 5057.15     | -420.24           | -344.56       | 446.03       | 40°21'49.126"N | 104°24'05.258"W | 0.00             |               |
| 5217.00†   | 12.226             | 129.264        | 5154.88     | -435.63           | -357.97       | 462.42       | 40°21'48.994"N | 104°24'05.046"W | 0.00             |               |
| 5317.00†   | 12.226             | 129.264        | 5252.61     | -451.03           | -371.37       | 478.82       | 40°21'48.861"N | 104°24'04.834"W | 0.00             |               |
| 5417.00†   | 12.226             | 129.264        | 5350.34     | -466.43           | -384.77       | 495.21       | 40°21'48.729"N | 104°24'04.622"W | 0.00             |               |



# Planned Wellpath Report

NORTH PLATTE K-35-34MRLNB (REV-A.0) PWP

Page 4 of 8



| REFERENCE WELLPATH IDENTIFICATION |                           |          |  |
|-----------------------------------|---------------------------|----------|--|
| Operator                          | BONANZA CREEK OIL COMPANY | Slot     | SLOT#25 NORTH PLATTE K-35-34MRLNB (WELL 6,STATE NORTH PLATTE O-26 PAD) |
| Area                              | COLORADO                  | Well     | NORTH PLATTE K-35-34MRLNB  |
| Field                             | WELD COUNTY               | Wellbore | NORTH PLATTE K-35-34MRLNB PWB  |
| Facility                          | SEC.26-T5N-R63W           |          |  |

| WELLPATH DATA (150 stations) † = interpolated/extrapolated station |                    |                |             |                   |               |              |                |                 |                  |                   |
|--|--------------------|----------------|-------------|-------------------|---------------|--------------|----------------|-----------------|------------------|-------------------|
| MD<br>[ft]   | Inclination<br>[°] | Azimuth<br>[°] | TVD<br>[ft] | Vert Sect<br>[ft] | North<br>[ft] | East<br>[ft] | Latitude       | Longitude       | DLS<br>[°/100ft] | Comments          |
| 5517.00†   | 12.226             | 129.264        | 5448.08     | -481.82           | -398.17       | 511.61       | 40°21'48.597"N | 104°24'04.410"W | 0.00             |                   |
| 5617.00†   | 12.226             | 129.264        | 5545.81     | -497.22           | -411.58       | 528.01       | 40°21'48.464"N | 104°24'04.199"W | 0.00             |                   |
| 5697.56  | 12.226             | 129.264        | 5624.54     | -509.62           | -422.38       | 541.21       | 40°21'48.357"N | 104°24'04.028"W | 0.00             | End of Tangent    |
| 5717.00†   | 10.810             | 135.949        | 5643.59     | -512.29           | -424.99       | 544.08       | 40°21'48.332"N | 104°24'03.991"W | 10.00            |                   |
| 5817.00†   | 8.231              | 197.788        | 5742.44     | -515.65           | -438.58       | 548.42       | 40°21'48.197"N | 104°24'03.935"W | 10.00            |                   |
| 5917.00†   | 14.744             | 238.308        | 5840.53     | -501.66           | -452.11       | 535.37       | 40°21'48.063"N | 104°24'04.103"W | 10.00            |                   |
| 6017.00†   | 23.786             | 251.643        | 5934.87     | -470.76           | -465.18       | 505.33       | 40°21'47.934"N | 104°24'04.492"W | 10.00            |                   |
| 6117.00†   | 33.359             | 257.770        | 6022.61     | -423.88           | -477.39       | 459.20       | 40°21'47.814"N | 104°24'05.087"W | 10.00            |                   |
| 6217.00†   | 43.109             | 261.382        | 6101.07     | -362.44           | -488.36       | 398.39       | 40°21'47.705"N | 104°24'05.873"W | 10.00            |                   |
| 6317.00†   | 52.938             | 263.870        | 6167.88     | -288.32           | -497.77       | 324.75       | 40°21'47.612"N | 104°24'06.824"W | 10.00            |                   |
| 6417.00†   | 62.807             | 265.782        | 6221.00     | -203.76           | -505.32       | 240.51       | 40°21'47.538"N | 104°24'07.913"W | 10.00            |                   |
| 6517.00†   | 72.697             | 267.379        | 6258.82     | -111.33           | -510.78       | 148.24       | 40°21'47.484"N | 104°24'09.105"W | 10.00            |                   |
| 6617.00†   | 82.599             | 268.812        | 6280.18     | -13.84            | -514.00       | 50.73        | 40°21'47.452"N | 104°24'10.364"W | 10.00            |                   |
| 6691.71  | 90.000             | 269.836        | 6285.00†    | 60.53             | -514.88       | -23.76       | 40°21'47.443"N | 104°24'11.327"W | 10.00            | End of 3D Arc (J) |
| 6717.00†   | 90.000             | 269.836        | 6285.00     | 85.76             | -514.95       | -49.05       | 40°21'47.443"N | 104°24'11.653"W | 0.00             |                   |
| 6817.00†   | 90.000             | 269.836        | 6285.00     | 185.52            | -515.24       | -149.05      | 40°21'47.440"N | 104°24'12.945"W | 0.00             |                   |
| 6917.00†   | 90.000             | 269.836        | 6285.00     | 285.29            | -515.52       | -249.05      | 40°21'47.437"N | 104°24'14.237"W | 0.00             |                   |
| 7017.00†   | 90.000             | 269.836        | 6285.00     | 385.05            | -515.81       | -349.05      | 40°21'47.434"N | 104°24'15.529"W | 0.00             |                   |
| 7117.00†   | 90.000             | 269.836        | 6285.00     | 484.82            | -516.10       | -449.05      | 40°21'47.431"N | 104°24'16.821"W | 0.00             |                   |
| 7217.00†   | 90.000             | 269.836        | 6285.00     | 584.58            | -516.38       | -549.05      | 40°21'47.428"N | 104°24'18.112"W | 0.00             |                   |
| 7317.00†   | 90.000             | 269.836        | 6285.00     | 684.34            | -516.67       | -649.05      | 40°21'47.426"N | 104°24'19.404"W | 0.00             |                   |
| 7417.00†   | 90.000             | 269.836        | 6285.00     | 784.11            | -516.95       | -749.05      | 40°21'47.423"N | 104°24'20.696"W | 0.00             |                   |
| 7517.00†   | 90.000             | 269.836        | 6285.00     | 883.87            | -517.24       | -849.05      | 40°21'47.420"N | 104°24'21.988"W | 0.00             |                   |
| 7617.00†   | 90.000             | 269.836        | 6285.00     | 983.64            | -517.52       | -949.05      | 40°21'47.417"N | 104°24'23.280"W | 0.00             |                   |
| 7717.00†   | 90.000             | 269.836        | 6285.00     | 1083.40           | -517.81       | -1049.05     | 40°21'47.414"N | 104°24'24.572"W | 0.00             |                   |
| 7817.00†   | 90.000             | 269.836        | 6285.00     | 1183.16           | -518.10       | -1149.05     | 40°21'47.411"N | 104°24'25.863"W | 0.00             |                   |
| 7917.00†   | 90.000             | 269.836        | 6285.00     | 1282.93           | -518.38       | -1249.05     | 40°21'47.408"N | 104°24'27.155"W | 0.00             |                   |
| 8017.00†   | 90.000             | 269.836        | 6285.00     | 1382.69           | -518.67       | -1349.05     | 40°21'47.406"N | 104°24'28.447"W | 0.00             |                   |
| 8117.00†   | 90.000             | 269.836        | 6285.00     | 1482.45           | -518.95       | -1449.05     | 40°21'47.403"N | 104°24'29.739"W | 0.00             |                   |
| 8217.00†   | 90.000             | 269.836        | 6285.00     | 1582.22           | -519.24       | -1549.05     | 40°21'47.400"N | 104°24'31.031"W | 0.00             |                   |





# Planned Wellpath Report

## NORTH PLATTE K-35-34MRLNB (REV-A.0) PWP

Page 5 of 8



| REFERENCE WELLPATH IDENTIFICATION |                           |          |  |
|-----------------------------------|---------------------------|----------|--|
| Operator                          | BONANZA CREEK OIL COMPANY | Slot     | SLOT#25 NORTH PLATTE K-35-34MRLNB (WELL 6,STATE NORTH PLATTE O-26 PAD) |
| Area                              | COLORADO                  | Well     | NORTH PLATTE K-35-34MRLNB  |
| Field                             | WELD COUNTY               | Wellbore | NORTH PLATTE K-35-34MRLNB PWB  |
| Facility                          | SEC.26-T5N-R63W           |          |  |

| WELLPATH DATA (150 stations) † = interpolated/extrapolated station |                    |                |             |                   |               |              |                |                 |                  |          |
|--|--------------------|----------------|-------------|-------------------|---------------|--------------|----------------|-----------------|------------------|----------|
| MD<br>[ft]   | Inclination<br>[°] | Azimuth<br>[°] | TVD<br>[ft] | Vert Sect<br>[ft] | North<br>[ft] | East<br>[ft] | Latitude       | Longitude       | DLS<br>[°/100ft] | Comments |
| 8317.00†   | 90.000             | 269.836        | 6285.00     | 1681.98           | -519.52       | -1649.05     | 40°21'47.397"N | 104°24'32.323"W | 0.00             |          |
| 8417.00†   | 90.000             | 269.836        | 6285.00     | 1781.75           | -519.81       | -1749.05     | 40°21'47.394"N | 104°24'33.614"W | 0.00             |          |
| 8517.00†   | 90.000             | 269.836        | 6285.00     | 1881.51           | -520.10       | -1849.05     | 40°21'47.391"N | 104°24'34.906"W | 0.00             |          |
| 8617.00†   | 90.000             | 269.836        | 6285.00     | 1981.27           | -520.38       | -1949.05     | 40°21'47.388"N | 104°24'36.198"W | 0.00             |          |
| 8717.00†   | 90.000             | 269.836        | 6285.00     | 2081.04           | -520.67       | -2049.05     | 40°21'47.385"N | 104°24'37.490"W | 0.00             |          |
| 8817.00†   | 90.000             | 269.836        | 6285.00     | 2180.80           | -520.95       | -2149.05     | 40°21'47.382"N | 104°24'38.782"W | 0.00             |          |
| 8917.00†   | 90.000             | 269.836        | 6285.00     | 2280.57           | -521.24       | -2249.05     | 40°21'47.379"N | 104°24'40.074"W | 0.00             |          |
| 9017.00†   | 90.000             | 269.836        | 6285.00     | 2380.33           | -521.52       | -2349.05     | 40°21'47.377"N | 104°24'41.365"W | 0.00             |          |
| 9117.00†   | 90.000             | 269.836        | 6285.00     | 2480.09           | -521.81       | -2449.04     | 40°21'47.374"N | 104°24'42.657"W | 0.00             |          |
| 9217.00†   | 90.000             | 269.836        | 6285.00     | 2579.86           | -522.10       | -2549.04     | 40°21'47.371"N | 104°24'43.949"W | 0.00             |          |
| 9317.00†   | 90.000             | 269.836        | 6285.00     | 2679.62           | -522.38       | -2649.04     | 40°21'47.368"N | 104°24'45.241"W | 0.00             |          |
| 9417.00†   | 90.000             | 269.836        | 6285.00     | 2779.39           | -522.67       | -2749.04     | 40°21'47.365"N | 104°24'46.533"W | 0.00             |          |
| 9517.00†   | 90.000             | 269.836        | 6285.00     | 2879.15           | -522.95       | -2849.04     | 40°21'47.362"N | 104°24'47.824"W | 0.00             |          |
| 9617.00†   | 90.000             | 269.836        | 6285.00     | 2978.91           | -523.24       | -2949.04     | 40°21'47.359"N | 104°24'49.116"W | 0.00             |          |
| 9717.00†   | 90.000             | 269.836        | 6285.00     | 3078.68           | -523.53       | -3049.04     | 40°21'47.356"N | 104°24'50.408"W | 0.00             |          |
| 9817.00†   | 90.000             | 269.836        | 6285.00     | 3178.44           | -523.81       | -3149.04     | 40°21'47.353"N | 104°24'51.700"W | 0.00             |          |
| 9917.00†   | 90.000             | 269.836        | 6285.00     | 3278.21           | -524.10       | -3249.04     | 40°21'47.350"N | 104°24'52.992"W | 0.00             |          |
| 10017.00†  | 90.000             | 269.836        | 6285.00     | 3377.97           | -524.38       | -3349.04     | 40°21'47.347"N | 104°24'54.284"W | 0.00             |          |
| 10117.00†  | 90.000             | 269.836        | 6285.00     | 3477.73           | -524.67       | -3449.04     | 40°21'47.344"N | 104°24'55.575"W | 0.00             |          |
| 10217.00†  | 90.000             | 269.836        | 6285.00     | 3577.50           | -524.95       | -3549.04     | 40°21'47.341"N | 104°24'56.867"W | 0.00             |          |
| 10317.00†  | 90.000             | 269.836        | 6285.00     | 3677.26           | -525.24       | -3649.04     | 40°21'47.338"N | 104°24'58.159"W | 0.00             |          |
| 10417.00†  | 90.000             | 269.836        | 6285.00     | 3777.03           | -525.53       | -3749.04     | 40°21'47.335"N | 104°24'59.451"W | 0.00             |          |
| 10517.00†  | 90.000             | 269.836        | 6285.00     | 3876.79           | -525.81       | -3849.04     | 40°21'47.332"N | 104°25'00.743"W | 0.00             |          |
| 10617.00†  | 90.000             | 269.836        | 6285.00     | 3976.55           | -526.10       | -3949.04     | 40°21'47.329"N | 104°25'02.035"W | 0.00             |          |
| 10717.00†  | 90.000             | 269.836        | 6285.00     | 4076.32           | -526.38       | -4049.04     | 40°21'47.326"N | 104°25'03.326"W | 0.00             |          |
| 10817.00†  | 90.000             | 269.836        | 6285.00     | 4176.08           | -526.67       | -4149.04     | 40°21'47.323"N | 104°25'04.618"W | 0.00             |          |
| 10917.00†  | 90.000             | 269.836        | 6285.00     | 4275.84           | -526.95       | -4249.04     | 40°21'47.320"N | 104°25'05.910"W | 0.00             |          |
| 11017.00†  | 90.000             | 269.836        | 6285.00     | 4375.61           | -527.24       | -4349.04     | 40°21'47.317"N | 104°25'07.202"W | 0.00             |          |
| 11117.00†  | 90.000             | 269.836        | 6285.00     | 4475.37           | -527.53       | -4449.04     | 40°21'47.314"N | 104°25'08.494"W | 0.00             |          |
| 11217.00†  | 90.000             | 269.836        | 6285.00     | 4575.14           | -527.81       | -4549.04     | 40°21'47.311"N | 104°25'09.786"W | 0.00             |          |



# Planned Wellpath Report

## NORTH PLATTE K-35-34MRLNB (REV-A.0) PWP

Page 6 of 8



| REFERENCE WELLPATH IDENTIFICATION |                           |          |  |
|-----------------------------------|---------------------------|----------|--|
| Operator                          | BONANZA CREEK OIL COMPANY | Slot     | SLOT#25 NORTH PLATTE K-35-34MRLNB (WELL 6,STATE NORTH PLATTE O-26 PAD) |
| Area                              | COLORADO                  | Well     | NORTH PLATTE K-35-34MRLNB  |
| Field                             | WELD COUNTY               | Wellbore | NORTH PLATTE K-35-34MRLNB PWB  |
| Facility                          | SEC.26-T5N-R63W           |          |  |

| WELLPATH DATA (150 stations) † = interpolated/extrapolated station |                    |                |                      |                   |               |              |                |                 |                  |                    |
|--|--------------------|----------------|----------------------|-------------------|---------------|--------------|----------------|-----------------|------------------|--------------------|
| MD<br>[ft]   | Inclination<br>[°] | Azimuth<br>[°] | TVD<br>[ft]          | Vert Sect<br>[ft] | North<br>[ft] | East<br>[ft] | Latitude       | Longitude       | DLS<br>[°/100ft] | Comments           |
| 11317.00†  | 90.000             | 269.836        | 6285.00              | 4674.90           | -528.10       | -4649.04     | 40°21'47.308"N | 104°25'11.077"W | 0.00             |                    |
| 11417.00†  | 90.000             | 269.836        | 6285.00              | 4774.66           | -528.38       | -4749.04     | 40°21'47.305"N | 104°25'12.369"W | 0.00             |                    |
| 11517.00†  | 90.000             | 269.836        | 6285.00              | 4874.43           | -528.67       | -4849.03     | 40°21'47.302"N | 104°25'13.661"W | 0.00             |                    |
| 11617.00†  | 90.000             | 269.836        | 6285.00              | 4974.19           | -528.96       | -4949.03     | 40°21'47.299"N | 104°25'14.953"W | 0.00             |                    |
| 11717.00†  | 90.000             | 269.836        | 6285.00              | 5073.96           | -529.24       | -5049.03     | 40°21'47.296"N | 104°25'16.245"W | 0.00             |                    |
| 11817.00†  | 90.000             | 269.836        | 6285.00              | 5173.72           | -529.53       | -5149.03     | 40°21'47.293"N | 104°25'17.537"W | 0.00             |                    |
| 11917.00†  | 90.000             | 269.836        | 6285.00              | 5273.48           | -529.81       | -5249.03     | 40°21'47.290"N | 104°25'18.828"W | 0.00             |                    |
| 12017.00†  | 90.000             | 269.836        | 6285.00              | 5373.25           | -530.10       | -5349.03     | 40°21'47.287"N | 104°25'20.120"W | 0.00             |                    |
| 12117.00†  | 90.000             | 269.836        | 6285.00              | 5473.01           | -530.38       | -5449.03     | 40°21'47.284"N | 104°25'21.412"W | 0.00             |                    |
| 12217.00†  | 90.000             | 269.836        | 6285.00              | 5572.78           | -530.67       | -5549.03     | 40°21'47.281"N | 104°25'22.704"W | 0.00             |                    |
| 12317.00†  | 90.000             | 269.836        | 6285.00              | 5672.54           | -530.96       | -5649.03     | 40°21'47.278"N | 104°25'23.996"W | 0.00             |                    |
| 12417.00†  | 90.000             | 269.836        | 6285.00              | 5772.30           | -531.24       | -5749.03     | 40°21'47.275"N | 104°25'25.287"W | 0.00             |                    |
| 12517.00†  | 90.000             | 269.836        | 6285.00              | 5872.07           | -531.53       | -5849.03     | 40°21'47.272"N | 104°25'26.579"W | 0.00             |                    |
| 12617.00†  | 90.000             | 269.836        | 6285.00              | 5971.83           | -531.81       | -5949.03     | 40°21'47.269"N | 104°25'27.871"W | 0.00             |                    |
| 12717.00†  | 90.000             | 269.836        | 6285.00              | 6071.60           | -532.10       | -6049.03     | 40°21'47.266"N | 104°25'29.163"W | 0.00             |                    |
| 12817.00†  | 90.000             | 269.836        | 6285.00              | 6171.36           | -532.38       | -6149.03     | 40°21'47.263"N | 104°25'30.455"W | 0.00             |                    |
| 12917.00†  | 90.000             | 269.836        | 6285.00              | 6271.12           | -532.67       | -6249.03     | 40°21'47.260"N | 104°25'31.747"W | 0.00             |                    |
| 13017.00†  | 90.000             | 269.836        | 6285.00              | 6370.89           | -532.96       | -6349.03     | 40°21'47.257"N | 104°25'33.038"W | 0.00             |                    |
| 13117.00†  | 90.000             | 269.836        | 6285.00              | 6470.65           | -533.24       | -6449.03     | 40°21'47.254"N | 104°25'34.330"W | 0.00             |                    |
| 13217.00†  | 90.000             | 269.836        | 6285.00              | 6570.42           | -533.53       | -6549.03     | 40°21'47.250"N | 104°25'35.622"W | 0.00             |                    |
| 13317.00†  | 90.000             | 269.836        | 6285.00              | 6670.18           | -533.81       | -6649.03     | 40°21'47.247"N | 104°25'36.914"W | 0.00             |                    |
| 13417.00†  | 90.000             | 269.836        | 6285.00              | 6769.94           | -534.10       | -6749.03     | 40°21'47.244"N | 104°25'38.206"W | 0.00             |                    |
| 13517.00†  | 90.000             | 269.836        | 6285.00              | 6869.71           | -534.39       | -6849.03     | 40°21'47.241"N | 104°25'39.498"W | 0.00             |                    |
| 13617.00†  | 90.000             | 269.836        | 6285.00              | 6969.47           | -534.67       | -6949.03     | 40°21'47.238"N | 104°25'40.789"W | 0.00             |                    |
| 13717.00†  | 90.000             | 269.836        | 6285.00              | 7069.23           | -534.96       | -7049.03     | 40°21'47.235"N | 104°25'42.081"W | 0.00             |                    |
| 13817.00†  | 90.000             | 269.836        | 6285.00              | 7169.00           | -535.24       | -7149.03     | 40°21'47.232"N | 104°25'43.373"W | 0.00             |                    |
| 13917.00†  | 90.000             | 269.836        | 6285.00              | 7268.76           | -535.53       | -7249.03     | 40°21'47.229"N | 104°25'44.665"W | 0.00             |                    |
| 14017.00†  | 90.000             | 269.836        | 6285.00              | 7368.53           | -535.81       | -7349.02     | 40°21'47.226"N | 104°25'45.957"W | 0.00             |                    |
| 14117.00†  | 90.000             | 269.836        | 6285.00              | 7468.29           | -536.10       | -7449.02     | 40°21'47.223"N | 104°25'47.249"W | 0.00             |                    |
| 14145.38   | 90.000             | 269.836        | 6285.00 <sup>2</sup> | 7496.60           | -536.18       | -7477.41     | 40°21'47.222"N | 104°25'47.615"W | 0.00             | End of Tangent (J) |

## HOLE & CASING SECTIONS

- Ref Wellbore: NORTH PLATTE K-35-34MRLNB PWB      Ref Wellpath: NORTH PLATTE K-35-34MRLNB (REV-A.0) PWP

| String/Diameter        | Start MD<br>[ft] | End MD<br>[ft] | Interval<br>[ft] | Start TVD<br>[ft] | End TVD<br>[ft] | Start N/S<br>[ft] | Start E/W<br>[ft] | End N/S<br>[ft] | End E/W<br>[ft] |
|------------------------|------------------|----------------|------------------|-------------------|-----------------|-------------------|-------------------|-----------------|-----------------|
| 9.625in Casing Surface | 17.00            | 1550.00        | 1533.00          | 17.00             | 1550.00         | 0.00              | 0.00              | 0.42            | -0.13           |

## TARGETS

| Name  | MD<br>[ft] | TVD<br>[ft] | North<br>[ft] | East<br>[ft] | Grid East<br>[US ft] | Grid North<br>[US ft] | Latitude       | Longitude       | Shape   |
|---|------------|-------------|---------------|--------------|----------------------|-----------------------|----------------|-----------------|---------|
| SEC.26-T05N-R63W  |            | -19.00      | 4202.87       | -1533.28     | 3304075.56           | 1381735.41            | 40°22'34.062"N | 104°24'30.831"W | polygon |
| SEC.02-T4N-R63W   |            | -5.00       | 931.93        | -1123.27     | 3304525.98           | 1378469.93            | 40°22'01.740"N | 104°24'25.531"W | polygon |
| SEC.35-T5N-R63W   |            | -5.00       | 931.93        | -1123.27     | 3304525.98           | 1378469.93            | 40°22'01.740"N | 104°24'25.531"W | polygon |
| 2) NORTH PLATTE K-35-34MRLNB BHL<br>(10'FNL & 470'FWL,SEC.34,REV-1) | 14145.38   | 6285.00     | -536.18       | -7477.41     | 3298190.76           | 1376923.40            | 40°21'47.222"N | 104°25'47.615"W | point   |
| 1) NORTH PLATTE K-35-34MRLNB LP<br>(10'FNL & 2570'FEL,SEC.35,REV-1) | 6691.71    | 6285.00     | -514.88       | -23.76       | 3305643.25           | 1377036.89            | 40°21'47.443"N | 104°24'11.327"W | point   |
| NORTH PLATTE K21-35-2MRLNC BHL<br>(50'FNL 2203'FWL,SEC.2,REV-1)     |            | 6350.00     | -5759.75      | -901.03      | 3304830.96           | 1371781.80            | 40°20'55.615"N | 104°24'22.657"W | point   |
| NORTH PLATTE K21-35-2MRLNC LP<br>(470'FNL 2430'FWL,SEC.35,REV-1)    |            | 6350.00     | -974.87       | -250.33      | 3305422.39           | 1376574.16            | 40°21'42.898"N | 104°24'14.253"W | point   |
| SEC.02-T4N-R63W 460'SETBACK   |            | 6539.00     | 931.93        | -1123.27     | 3304525.98           | 1378469.93            | 40°22'01.740"N | 104°24'25.531"W | polygon |
| SEC.26-T05N-R63W 460' SETBACK                                       |            | 6539.00     | 4202.87       | -1533.28     | 3304075.56           | 1381735.41            | 40°22'34.062"N | 104°24'30.831"W | polygon |
| SEC.35-T5N-R63W 460'SETBACK   |            | 6539.00     | 931.93        | -1123.27     | 3304525.98           | 1378469.93            | 40°22'01.740"N | 104°24'25.531"W | polygon |





# Planned Wellpath Report

NORTH PLATTE K-35-34MRLNB (REV-A.0) PWP

Page 7 of 8



| REFERENCE WELLPATH IDENTIFICATION |                           |          |  |
|-----------------------------------|---------------------------|----------|--|
| Operator                          | BONANZA CREEK OIL COMPANY | Slot     | SLOT#25 NORTH PLATTE K-35-34MRLNB (WELL 6,STATE NORTH PLATTE O-26 PAD) |
| Area                              | COLORADO                  | Well     | NORTH PLATTE K-35-34MRLNB  |
| Field                             | WELD COUNTY               | Wellbore | NORTH PLATTE K-35-34MRLNB PWB  |
| Facility                          | SEC.26-T5N-R63W           |          |  |

| SURVEY PROGRAM - Ref Wellbore: NORTH PLATTE K-35-34MRLNB PWB      Ref Wellpath: NORTH PLATTE K-35-34MRLNB (REV-A.0) PWP |                |  |                  |                               |
|---|----------------|--|------------------|-------------------------------|
| Start MD<br>[ft]  | End MD<br>[ft] | Positional Uncertainty Model                   | Log Name/Comment | Wellbore                      |
| 17.00   | 1550.00        | BHI NaviTrak (Rotating+Axial Corr)             |                  | NORTH PLATTE K-35-34MRLNB PWB |
| 1550.00   | 14145.38       | BHI AutoTrak Curve (Axial Corr, Short spacing) |                  | NORTH PLATTE K-35-34MRLNB PWB |



# Planned Wellpath Report

NORTH PLATTE K-35-34MRLNB (REV-A.0) PWP

Page 8 of 8



| REFERENCE WELLPATH IDENTIFICATION |                           |          |  |
|-----------------------------------|---------------------------|----------|--|
| Operator                          | BONANZA CREEK OIL COMPANY | Slot     | SLOT#25 NORTH PLATTE K-35-34MRLNB (WELL 6,STATE NORTH PLATTE O-26 PAD) |
| Area                              | COLORADO                  | Well     | NORTH PLATTE K-35-34MRLNB  |
| Field                             | WELD COUNTY               | Wellbore | NORTH PLATTE K-35-34MRLNB PWB  |
| Facility                          | SEC.26-T5N-R63W           |          |  |

| DESIGN COMMENTS |                    |                |             |                    |
|-----------------|--------------------|----------------|-------------|--------------------|
| MD<br>[ft]      | Inclination<br>[°] | Azimuth<br>[°] | TVD<br>[ft] | Comment            |
| 17.00           | 0.000              | 343.000        | 17.00       | Tie On             |
| 1500.00         | 0.000              | 343.000        | 1500.00     | End of Tangent     |
| 1600.00         | 2.000              | 343.000        | 1599.98     | End of Build       |
| 2000.26         | 2.000              | 343.000        | 2000.00     | End of Tangent     |
| 2696.91         | 12.226             | 129.264        | 2691.95     | End of 3D Arc      |
| 5697.56         | 12.226             | 129.264        | 5624.54     | End of Tangent     |
| 6691.71         | 90.000             | 269.836        | 6285.00     | End of 3D Arc (J)  |
| 14145.38        | 90.000             | 269.836        | 6285.00     | End of Tangent (J) |