



410 17th Street, Suite 1400
Denver, CO 80202
(720) 440-6100 phone
(720) 305-0804 fax

BonanzaCrk.com

December 12, 2017

State of Colorado
Oil and Gas Conservation Commission
1120 Lincoln Street, Suite 801
Denver, CO 80203

RE: Proposed Wellbore Spacing Unit
North Platte K31-35-2MRLNB
Niobrara New Drill
SWSE Section 26, Township 5N, Range 63W, 6th PM
Weld County, Colorado

Dear Director Lepore,

Bonanza Creek Energy Operating Company, LLC. ("Bonanza Creek") is planning to drill the above captioned well in accordance with the provisions of Colorado Oil and Gas Conservation Commission (COGCC) Rule 318A.e.

Bonanza Creek's proposed wellbore spacing unit consists of:

Township 5N, Range 63W (Weld County):
Section 35: W2E2, E2W2

Township 4N, Range 63W (Weld County):
Section 2: Lot 1

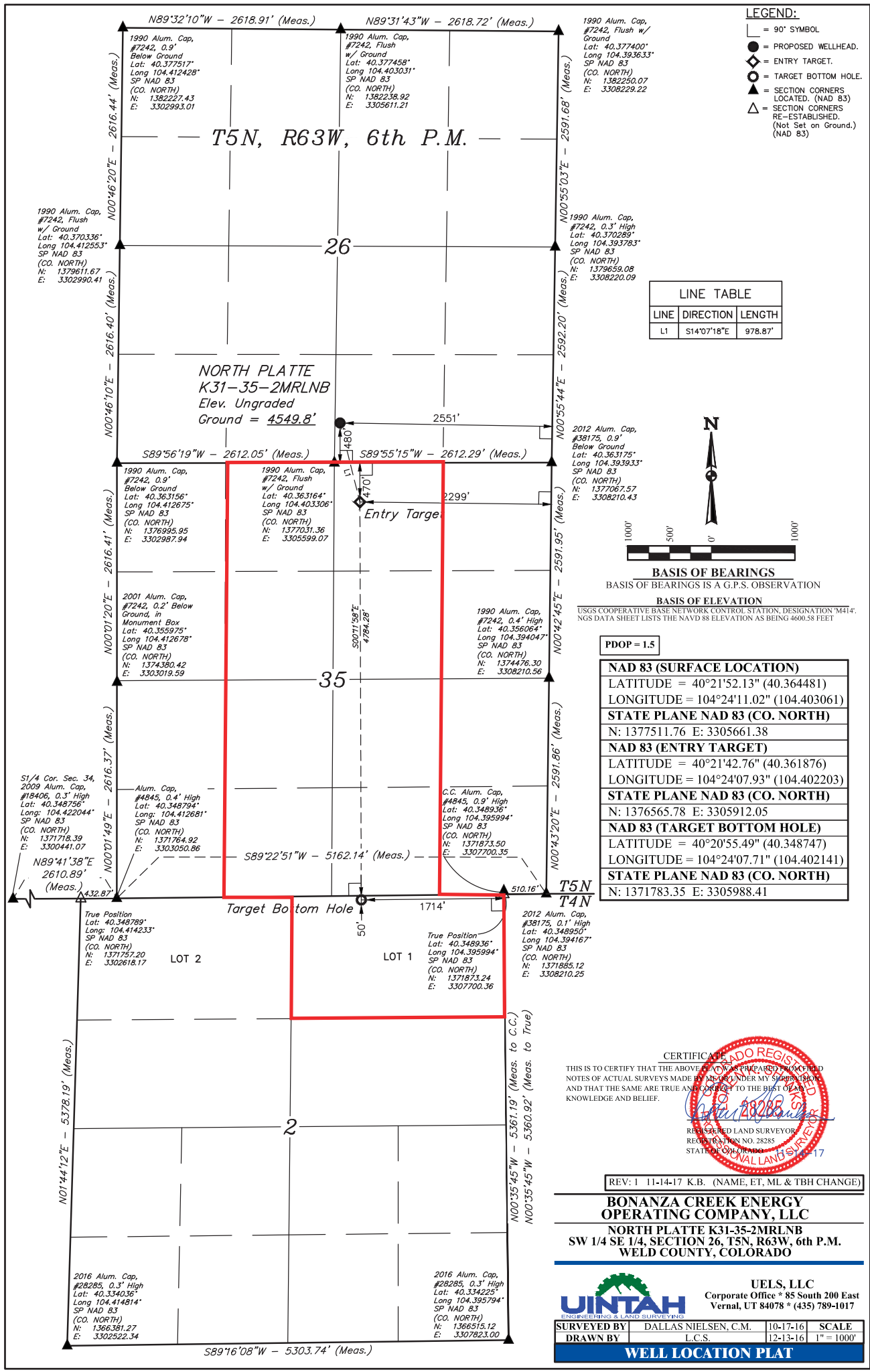
Total acres: 411ac

The 30 day notification time period has passed and we have not yet received any objections to such well locations or proposed spacing unit, therefore Bonanza Creek hereby requests the Director to approve the above mentioned well. Bonanza Creek respectfully requests the COGCC review the enclosed map illustrating the proposed wellbore spacing unit.

Regards,
Bonanza Creek Energy Operating Company, LLC.

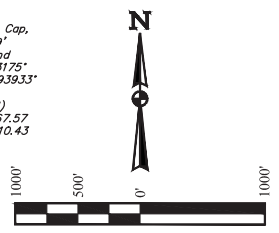
A handwritten signature in black ink that reads "Brian Dodek". The signature is fluid and cursive.

Brian Dodek, P.G.
Manager – Environmental & Regulatory Compliance



- LEGEND:**
- ◻ = 90° SYMBOL
 - = PROPOSED WELLHEAD.
 - ⊙ = ENTRY TARGET.
 - = TARGET BOTTOM HOLE.
 - ▲ = SECTION CORNERS LOCATED. (NAD 83)
 - △ = SECTION CORNERS RE-ESTABLISHED. (Not Set on Ground.) (NAD 83)

LINE TABLE		
LINE	DIRECTION	LENGTH
L1	S14°07'18"E	978.87'



BASIS OF BEARINGS
BASIS OF BEARINGS IS A G.P.S. OBSERVATION

BASIS OF ELEVATION
USGS COOPERATIVE BASE NETWORK CONTROL STATION, DESIGNATION "M474"; NGS DATA SHEET LISTS THE NAVD 88 ELEVATION AS BEING 4600.58 FEET

PDOP = 1.5

NAD 83 (SURFACE LOCATION)	
LATITUDE = 40°21'52.13"	(40.364481)
LONGITUDE = 104°24'11.02"	(104.403061)
STATE PLANE NAD 83 (CO. NORTH)	
N: 1377511.76	E: 3305661.38
NAD 83 (ENTRY TARGET)	
LATITUDE = 40°21'42.76"	(40.361876)
LONGITUDE = 104°24'07.93"	(104.402203)
STATE PLANE NAD 83 (CO. NORTH)	
N: 1376565.78	E: 3305912.05
NAD 83 (TARGET BOTTOM HOLE)	
LATITUDE = 40°20'55.49"	(40.348747)
LONGITUDE = 104°24'07.71"	(104.402141)
STATE PLANE NAD 83 (CO. NORTH)	
N: 1371783.35	E: 3305988.41

CERTIFICATE OF REGISTRATION
THIS IS TO CERTIFY THAT THE ABOVE PLAT WAS PREPARED FROM FIELD NOTES OF ACTUAL SURVEYS MADE BY ME OR UNDER MY SUPERVISION AND THAT THE SAME ARE TRUE AND CORRECT TO THE BEST OF MY KNOWLEDGE AND BELIEF.



REV: 1 11-14-17 K.B. (NAME, ET, ML & TBH CHANGE)

BONANZA CREEK ENERGY OPERATING COMPANY, LLC
NORTH PLATTE K31-35-2MRLNB
SW 1/4 SE 1/4, SECTION 26, T5N, R63W, 6th P.M.
WELD COUNTY, COLORADO

UJINTAH ENGINEERING & LAND SURVEYING
WELLS, LLC
Corporate Office * 85 South 200 East
Vernal, UT 84078 * (435) 789-1017

SURVEYED BY	DALLAS NIELSEN, C.M.	10-17-16	SCALE
DRAWN BY	L.C.S.	12-13-16	1" = 1000'

WELL LOCATION PLAT